

Fabric grades:

Acoustic	GR5
Ascend	GR4
Beeline	GR2
Canter	GR1
Cover Cloth	GR3
Eon	GR3
Faux Felt	GR3
Groove	GR3
Kindred	GR4
Row	GR3
Synergy	GR3
Velocity	GR3

**PVC Free and Crypton**  
From Momentum Textiles



**SYNERGY** Barley



Agean



Tango



Meadow



Denim



**GROOVE** Calm



Polar



Stone



Khaki



Demure



Beach



Harbor



Zest



Glacier



Ember



Surplus



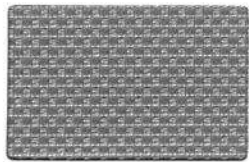
Guide



Expanse



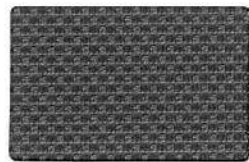
**EON** Arena



Coquette



Path



Mineral



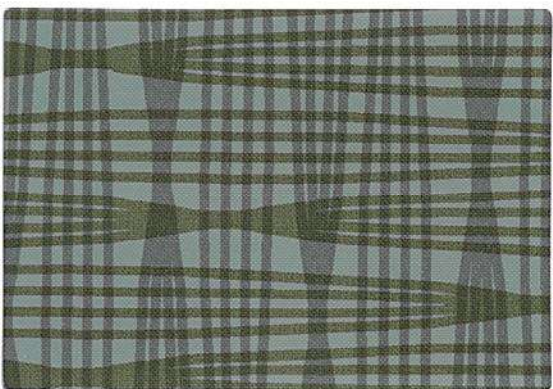
Anew



Cove



Mystery



**ACOUSTIC** Dolomite



Wisp



Pumice



Fresh



Anise



**Cover Cloth** Sorrel



Oat



Savor



Cyan



Platinum



Vesper



Electric



Shire



Heirloom



Taupe



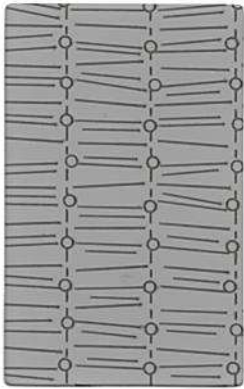
Indigo



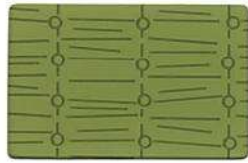
Coffee



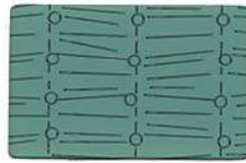
Graphite



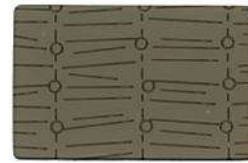
**Velocity** Steel



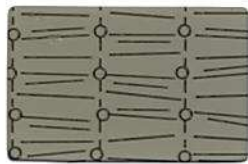
Olive



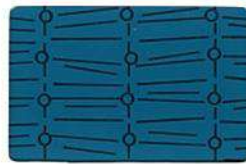
Pond



Malt



Sycamore



Azure



Charcoal



**Canter** Quarry



Toasty



Kiwi Green



Nimbus



Verdite



Earth



Iron



Saddle



Safari



Ballad



Night



Sable



Onyx



**Row** Oasis



Marigold



Leaf



Sage



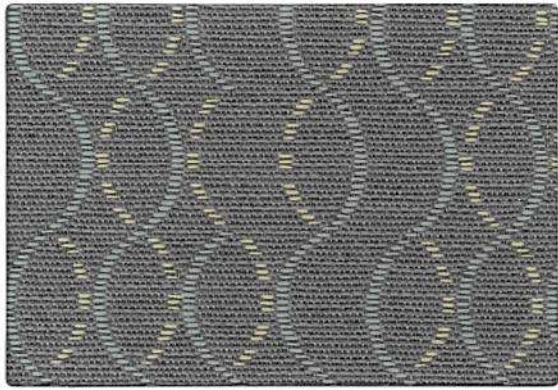
Stone



Fjord



Blaze



**Ascend** Calm



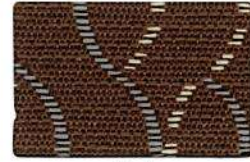
Flannel



Harvest



Evening



Bark



**Beeline** Sprout



Sisal



Eucalyptus



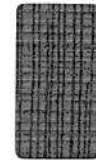
Geyser



Nimbus



Fossil



Forge



Oat



Cork



Tidal



Portobello



Walnut



Eclipse



**Faux Felt** Stone



Pebble



Camel



Quail



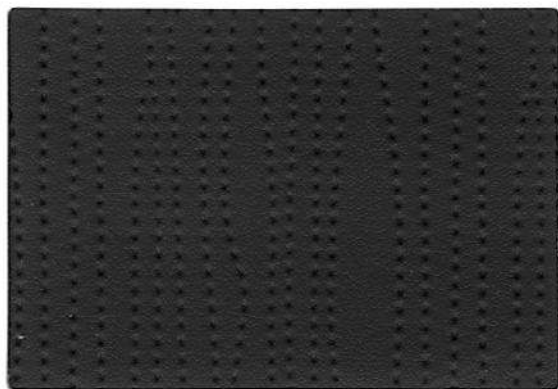
Sprout



Pool



Charcoal



**Kindred** Flint



Smoke



Orangery



Chai



Stream



# Technical Information

WOVEN CRYPTON®



CRYPTON®  
Super Fabrics

Cleaning Code: W and WS

A.C.T.: ☆

Width - Pattern	Content	Abrasion	Light Fastness	Approximate Repeats	Notes
56" ASCEND	61% Repreve® Post Consumer Recycled Polyester 39% Polyester	200,000 D.R.	40 Hrs. Class 4	6" L 1.875" W	A Directional Pattern Diluted Bleach Cleanable (10:1)
59" COVER CLOTH	56% Repreve® Post Consumer Recycled Polyester 44% Polyester	200,000 D.R.	40 Hrs. Class 4		Diluted Bleach Cleanable (10:1)
56" FAUX FELT	62% Repreve® Post Consumer Recycled Polyester 38% Polyester	75,000 D.R.	40 Hrs. Class 4.5		Diluted Bleach Cleanable (10:1)
53" SYNERGY	71% Post Consumer Recycled Polyester 29% Polyester	165,000 D.R.	40 Hrs. Class 4		Diluted Bleach Cleanable (10:1)
<b>Polyurethane PVC Free</b>					
54" ACOUSTIC	100% Polyurethane / PVC Free	100,000 D.R.	200 Hrs. Class 5	5" L 5" W	Diluted Bleach Cleanable (4:1)
54" BEELINE	100% Polyurethane / PVC Free	500,000 D.R.	200 Hrs. Class 4.5		Diluted Bleach Cleanable (4:1)
54" CANTER	100% Polyurethane / PVC Free	240,000 D.R.	200 Hrs. Class 4.5		Diluted Bleach Cleanable (4:1)
54" EON	100% Polyurethane / PVC Free	500,000 D.R.	200 Hrs. Class 4.5	.625" L .625" W	Diluted Bleach Cleanable (4:1)
54" GROOVE	54% Polyester 46% Polyurethane / PVC Free	500,000 D.R.	200 Hrs. Class 3.5	22.44" L 14.875" W	A Directional Pattern Diluted Bleach Cleanable (4:1)
54" KINDRED	100% Polyurethane / PVC Free	210,000 D.R.	200 Hrs. Class 4.5	8.25" L 2" W	A Directional Pattern Diluted Bleach Cleanable (4:1)
54" ROW	100% Polyurethane / PVC Free	500,000 D.R.	200 Hrs. Class 4.5		Shown Railroaded Diluted Bleach Cleanable (4:1)
54" VELOCITY	100% Polyurethane / PVC Free	500,000 D.R.	200 Hrs. Class 4	6.5" L 6.25" W	Shown Railroaded A Directional Pattern Diluted Bleach Cleanable (4:1)

Cleaning Code:W

A.C.T.: ☆

- All patterns are Virox and Bleach Cleanable
- All patterns pass CAL133 when the proper barrier is added

## EXPLANATION OF ACT ICONS UPHOLSTERY

### Fire Retardancy

Flammability testing determined as fabric's resistance to burning.

- PASSES  
California 117-2013

### Colorfastness to Wet & Dry Crocking

Colorfastness to wet & dry crocking refers to the rubbing of color from the fabric onto clothing, hands or other material and can occur under wet or dry conditions.

- PASSES  
AATCC 8-1974 Dry Crocking, Class 4 minimum; Wet Crocking, Class 3 minimum.

### Colorfastness to Light

Colorfastness to light is the degree to which the fabric will retain its color when exposed to light.

- PASSES  
AATCC 16A-1974 or AATCC 16E-1976; Class 4 minimum at 40 hours.  
NOTE: Class 4 minimum at 60 hours is recommended for direct sunlight exposure situations.

### Physical Properties

3 physical property tests include: brush pill test to determine a fabric's pilling. Breaking/tensile strength is the ability of a fabric to withstand tension without breaking or tearing. Seam slippage is the pulling apart of the fabrics at the seams.

- PASSES  
Brush Pill ASTM D3511, 3-4 minimum.  
Breaking Strength ASTM D3597-D1682-64 (1975) 50 lbs. minimum in warp & weft.  
Seam Slippage ASTM D3597-D434-75 25 lbs. minimum in warp & weft.

### Abrasion

Abrasion is the ability of a fabric to withstand damage from wear and rubbing. There is a general contract specification as well as a heavy duty specification.

- PASSES  
General Contract ASTM 3597 modified (#10 cotton duck); 15,000 double rubs Wyzenbeek Method.
- PASSES  
Heavy Duty ASTM 3597 modified (#10 cotton duck); 30,000 double rubs Wyzenbeek Method or ASTM D4966 (with 21 oz. weight); 40,000 rubs Martindale Method.

### Cleaning Code Definition

- W: Water-based foam or cleaner.
- WS: Water-based cleaning agents or foam.

# spec

SPEC FURNITURE INC.  
165 City View Drive,  
Toronto, Ontario Canada M9W 5B1

Tel: 416 246 5550 Fax: 416 246 5549  
Toll Free: 1 888 761 7732  
specit@specfurniture.com  
www.specfurniture.com