



2000 SERIES Lounge Seating

LAYOUTS

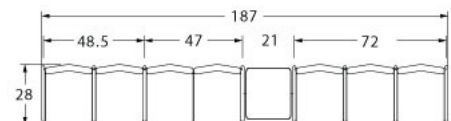
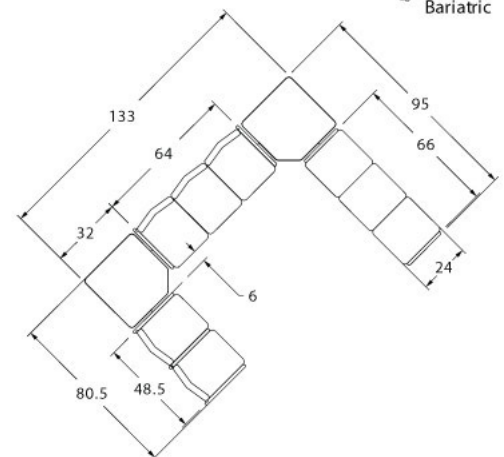
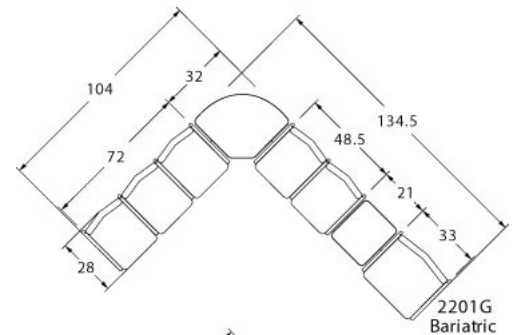


Description

- A popular choice for healthcare and institutional applications, 2000 Series combines great looks and comfort, with durability to meet real life demands.
- Available in one, two or three seaters as freestanding or connected.
- Your layout possibilities are unlimited with spacer, radius and corner tables – for both standard and bariatric seating in virtually any combination.
- Standard seat width is 22". Bariatric separate seat and back is a 30" wide seat and is load tested to 750 lbs. Cannot be connected to other bariatric seats.
- Zipper removable seats and backs are standard on split back designs.
- All models offer a choice of no center arms or half arm.
- Option of one piece or separate seat and back.
- Standard in 1.5" tube.
- Foam formulated to meet California Bulletin 133 standards is available.
- Please send a drawing of the configuration you require with your order.
- Optional floor mounting is available.
- For fabrics you wish railroaded or repeats larger than 5" x 5", please contact the factory with repeat information and yardage requirement will be provided.



LAYOUTS AND DIMENSIONS





Pricing August 2017
Discount 57.7% from List prices



2000 SERIES Lounge Seating



PLACING AN ORDER IS EASY

PRODUCT CODE

2201C

Series

22 : 2000 Series

Arm/Other

0 : Outside Arm
1 : Half Arm
3 : Easy Access Hip Chair

Number of Seats

1 : Single Seater
2 : Two Seater
3 : Three Seater

Chair Type

C : One Piece Seat and Back
CS : Seperate Seat and Back
G : Bariatric



OPTIONS

One-Piece Seat and Back

Separate Seat and Back



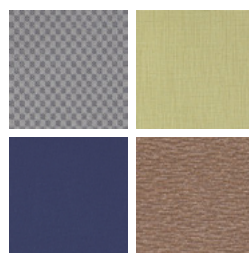
FINISHES

FRAME



Select from one of our 76 standard Spectone colors

FABRIC



Select fabrics from one of our textile partners



Pricing August 2017
Discount 57.7% from List prices



SIN 711-16

2000 SERIES Lounge Seating

One Piece Single Seater with arms

Standard Features

- One piece seat and back
- Fully welded 1.5" frame
- Frame in any Spectone color
- Glides
- Use in connected layouts at no upcharge
- Ships assembled as 1, 2 or 3 seaters
- Ships 1/carton 17 cu ft

Options

- Connecting tables
- Antibacterial and antimicrobial fabrics available
- CAL 133

Contact Spec™ Customer Service to railroad fabrics (specify repeat info and yardage requirement will be provided) and for repeats greater than 5" x 5"



One Piece Single Seater with arms – Four-point

COM 1.75 yds

1.75 yd COM per single seat and back

MODEL	COM	GR 1	GR 2	GR 3	GR 4	GR 5	GR 6
2201C	647	730	758	814	899	963	1049

Dimensions (inches)

seat H	18.0	seat W	22.0	arm H	26.0
total H	35.0	total W	25.0	depth	26.5

Exceeds BIFMA Seating Durability Test to 500 lbs per chair

CAL 133, add \$101 List per chair



2201C
38 lbs



2000 SERIES Lounge Seating

One Piece Two and Three Seaters with outside arms

Standard Features

- One piece seat and back
- Fully welded 1.5" frame
- Frame in any Spectone color
- Glides
- Use in connected layouts at no upcharge
- Ships assembled as 1, 2 or 3 seaters
- Ships 1/carton 28 cu ft (2 seater),
1/carton 42 cu ft (3 seater)

Options

- Connecting tables
- Antibacterial and antimicrobial fabrics available
- CAL 133

Contact Spec Customer Service to railroad fabrics (specify repeat info and yardage requirement will be provided) and for repeats greater than 5" x 5"



One Piece Two Seater with outside arms – Four-point

COM 3.5 yds

1.75 yd COM per single seat and back

MODEL	COM	GR 1	GR 2	GR 3	GR 4	GR 5	GR 6
2202C	1185	1355	1411	1524	1692	1821	1990

Dimensions (inches)

seat H	18.0	seat W	22.0	arm H	26.0
total H	35.0	total W	47.0	depth	26.5

Exceeds BIFMA Seating Durability Test to 500 lbs per two seater
CAL 133, add \$202 List per two seater



2202C
68 lbs

One Piece Three Seater with outside arms – Four-point

COM 5.25 yds

1.75 yd COM per single seat and back

MODEL	COM	GR 1	GR 2	GR 3	GR 4	GR 5	GR 6
2203C	1745	1998	2082	2250	2504	2698	2950

Dimensions (inches)

seat H	18.0	seat W	22.0	arm H	26.0
total H	35.0	total W	69.0	depth	26.5

Exceeds BIFMA Seating Durability Test to 500 lbs per three seater
CAL 133, add \$303 List per three seater



2203C
98 lbs



2000 SERIES Lounge Seating

One Piece Two and Three Seaters with half arms

Standard Features

- One piece seat and back
- Fully welded 1.5" frame
- Frame in any Spectone color
- Glides
- Use in connected layouts at no upcharge
- Ships assembled as 1, 2 or 3 seaters
- Ships 1/carton 28 cu ft (2 seater),
1/carton 42 cu ft (3 seater)

Options

- Connecting tables
- Antibacterial and antimicrobial fabrics available
- CAL 133

Contact Spec Customer Service to railroad fabrics (specify repeat info and yardage requirement will be provided) and for repeats greater than 5" x 5"



One Piece Two Seater with half arms – Four-point

COM 3.5 yds

1.75 yd COM per single seat and back

MODEL	COM	GR 1	GR 2	GR 3	GR 4	GR 5	GR 6
2212C	1291	1462	1517	1629	1798	1927	2094

Dimensions (inches)

seat H	18.0	seat W	22.0	arm H	26.0
total H	35.0	total W	48.5	depth	26.5

Exceeds BIFMA Seating Durability Test to 500 lbs per two seater
CAL 133, add \$202 List per two seater



2212C
72 lbs

One Piece Three Seater with half arms – Four-point

COM 5.25 yds

1.75 yd COM per single seat and back

MODEL	COM	GR 1	GR 2	GR 3	GR 4	GR 5	GR 6
2213C	1935	2190	2275	2443	2698	2890	3143

Dimensions (inches)

seat H	18.0	seat W	22.0	arm H	26.0
total H	35.0	total W	72.0	depth	26.5

Exceeds BIFMA Seating Durability Test to 500 lbs per three seater
CAL 133, add \$303 List per three seater



2213C
99 lbs



Pricing August 2017
Discount 57.7% from List prices



SIN 711-16

2000 SERIES Lounge Seating

One Piece Easy Access Hip Single Seater with arms

Standard Features

- One piece seat and back
- Fully welded 1.5" frame
- Frame in any Spectone color
- Glides
- 24" seat height, no seat pitch (level)
- Footrest which assists entering/exiting chair
- Available only as four-point
- Ships assembled
- Ships 1/carton 19 cu ft

Options

- Antibacterial and antimicrobial fabrics available
- CAL 133

Contact Spec Customer Service to railroad fabrics (specify repeat info and yardage requirement will be provided) and for repeats greater than 5" x 5"



One Piece Easy Access Hip Single Seater with arms

COM 1.75 yds
1.75 yd COM per single seat and back

MODEL	COM	GR 1	GR 2	GR 3	GR 4	GR 5	GR 6
2231C	743	826	854	911	995	1058	1144

Dimensions (inches)

seat H	24.0	seat W	22.0	arm H	30.5
total H	38.0	total W	25.0	depth	26.5

Exceeds BIFMA Seating Durability Test to 500 lbs per chair
CAL 133, add \$101 List per chair



2231C
45 lbs



2000 SERIES Lounge Seating

Separate Seat and Back Single Seater with arms – Four-point

Standard Features

- Separate seat and back
- Fully welded 1.5" frame
- Frame in any Spectone color
- Glides
- Zippered removable covers
- Use in connected layouts at no upcharge
- Ships assembled as 1, 2 or 3 seaters
- Ships 1/carton 17 cu ft

Options

- Connecting tables
- Antibacterial and antimicrobial fabrics available
- Different fabric on seat and back at no upcharge
- CAL 133

Contact Spec Customer Service to railroad fabrics (specify repeat info and yardage requirement will be provided) and for repeats greater than 5" x 5"



Separate Seat and Back Single Seater with arms – Four-point

COM 1.75 yds

1.0 yd COM per single seat

0.75 yd COM per single back

MODEL	COM	GR 1	GR 2	GR 3	GR 4	GR 5	GR 6
2201CS	836	920	950	1006	1089	1154	1237

Dimensions (inches)

seat H	18.0	seat W	22.0	arm H	26.0
total H	35.0	total W	25.0	depth	26.5

Exceeds BIFMA Seating Durability Test to 500 lbs per chair
CAL 133, add \$101 List per chair



2201CS
38 lbs



2000 SERIES Lounge Seating

Separate Seat and Back Two and Three Seaters with outside arms – Four-point

Standard Features

- Separate seat and back
- Fully welded 1.5" frame
- Frame in any Spectone color
- Glides
- Zippered removable covers
- Use in connected layouts at no upcharge
- Ships assembled as 1, 2 or 3 seaters
- Ships 1/carton 28 cu ft (2 seater),
1/carton 42 cu ft (3 seater)

Options

- Connecting tables
- Antibacterial and antimicrobial fabrics available
- Different fabric on seat and back at no upcharge
- CAL 133

Contact Spec Customer Service to railroad fabrics (specify repeat info and yardage requirement will be provided) and for repeats greater than 5" x 5"



Separate Seat and Back Two Seater with outside arms – Four-point

COM 3.5 yds

1.0 yd COM per single seat

0.75 yd COM per single back

MODEL	COM	GR 1	GR 2	GR 3	GR 4	GR 5	GR 6
2202CS	1497	1667	1723	1835	2005	2133	2301

Dimensions (inches)

seat H	18.0	seat W	22.0	arm H	26.0
total H	35.0	total W	47.0	depth	26.5

Exceeds BIFMA Seating Durability Test to 500 lbs per two seater
CAL 133, add \$202 List per two seater



2202CS
68 lbs

Separate Seat and Back Three Seater with outside arms – Four-point

COM 5.25 yds

1.0 yd COM per single seat

0.75 yd COM per single back

MODEL	COM	GR 1	GR 2	GR 3	GR 4	GR 5	GR 6
2203CS	2220	2472	2556	2723	2978	3172	3425

Dimensions (inches)

seat H	18.0	seat W	22.0	arm H	26.0
total H	35.0	total W	69.0	depth	26.5

Exceeds BIFMA Seating Durability Test to 500 lbs per three seater
CAL 133, add \$303 List per three seater



2203CS
98 lbs



2000 SERIES Lounge Seating

Separate Seat and Back Two and Three Seaters with half arms – Four-point

Standard Features

- Separate seat and back
- Fully welded 1.5" frame
- Frame in any Spectone color
- Glides
- Zippered removable covers
- Use in connected layouts at no upcharge
- Ships assembled as 1, 2 or 3 seaters
- Ships 1/carton 28 cu ft (2 seater),
1/carton 42 cu ft (3 seater)

Options

- Connecting tables
- Antibacterial and antimicrobial fabrics available
- Different fabric on seat and back at no upcharge
- CAL 133

Contact Spec Customer Service to railroad fabrics (specify repeat info and yardage requirement will be provided) and for repeats greater than 5" x 5"



Separate Seat and Back Two Seater with half arms – Four-point

COM 3.5 yds
1.0 yd COM per single seat
0.75 yd COM per single back

MODEL	COM	GR 1	GR 2	GR 3	GR 4	GR 5	GR 6
2212CS	1673	1841	1896	2009	2179	2306	2477

Dimensions (inches)
seat H 18.0 seat W 22.0 arm H 26.0
total H 35.0 total W 48.5 depth 26.5

Exceeds BIFMA Seating Durability Test to 500 lbs per two seater
CAL 133, add \$202 List per two seater



2212CS
72 lbs

Separate Seat and Back Three Seater with half arms – Four-point

COM 5.25 yds
1.0 yd COM per single seat
0.75 yd COM per single back

MODEL	COM	GR 1	GR 2	GR 3	GR 4	GR 5	GR 6
2213CS	2509	2761	2847	3015	3267	3461	3714

Dimensions (inches)
seat H 18.0 seat W 22.0 arm H 26.0
total H 35.0 total W 72.0 depth 26.5

Exceeds BIFMA Seating Durability Test to 500 lbs per three seater
CAL 133, add \$303 List per three seater



2213CS
99 lbs



2000 SERIES Lounge Seating

Separate Seat and Back Bariatric Single Seater with arms

Standard Features

- Separate seat and back
- Fully welded 1.5" frame
- Frame in any Spectone color
- Glides
- Zippered removable covers
- Use in connected layouts at no upcharge
- Available only as separate seat and back
- Available only as four-point
- Cannot connect bariatric to bariatric seating
- Ships assembled as 1, 2 or 3 seaters
- Ships 1/carton 22 cu ft

Options

- Connecting tables
- Antibacterial and antimicrobial fabrics available
- Different fabric on seat and back at no upcharge
- CAL 133

Contact Spec Customer Service to railroad fabrics (specify repeat info and yardage requirement will be provided) and for repeats greater than 5" x 5"



Separate Seat and Back Bariatric Single Seater with arms

COM 3.0 yds

1.5 yd COM per single seat

1.5 yd COM per single back

MODEL	COM	GR 1	GR 2	GR 3	GR 4	GR 5	GR 6
2201G	1071	1226	1277	1380	1536	1653	1808

Dimensions (inches)

seat H	18.0	seat W	30.0	arm H	26.0
total H	35.0	total W	33.0	depth	26.5

Exceeds BIFMA Seating Durability Test to 750 lbs per chair
CAL 133, add \$125 List per chair



2201G
48 lbs



2000 SERIES Lounge Seating

Separate Seat and Back Easy Access Hip Single Seater with arms

Standard Features

- Separate seat and back
- Fully welded 1.5" frame
- Frame in any Spectone color
- Glides
- Zippered removable covers
- 24" seat height, no seat pitch (level)
- Footrest which assists entering/exiting chair
- Available only as four-point
- Ships assembled
- Ships 1/carton 19 cu ft

Options

- Antibacterial and antimicrobial fabrics available
- Different fabric on seat and back at no upcharge
- CAL 133

Contact Spec Customer Service to railroad fabrics (specify repeat info and yardage requirement will be provided) and for repeats greater than 5" x 5"



Separate Seat and Back Easy Access Hip Single Seater with arms

COM 1.75 yds

1.0 yd COM per single seat

0.75 yd COM per single back

MODEL	COM	GR 1	GR 2	GR 3	GR 4	GR 5	GR 6
2231CS	932	1016	1046	1102	1184	1250	1333

Dimensions (inches)

seat H	24.0	seat W	22.0	arm H	30.25
total H	38.0	total W	25.0	depth	26.5

Exceeds BIFMA Seating Durability Test to 500 lbs per chair
CAL 133, add \$101 List per chair



2231CS
45 lbs



2000 SERIES Lounge Seating

Freestanding Lounge Tables

Corner and Spacer Connecting Tables

Standard Features

- Tops in laminate or veneer
- Select from 15 standard laminates or choose any standard Wilsonart, Nevamar, Formica, Arborite and Pionite matte finish laminates at no upcharge
- Table tops available with PVC Flat edge (PVF) or Self edge (SE)
- 9 standard hardwood edge stains. Stain-to-match available at no upcharge.
- Frame in any Spectone color
- Glides
- Tops utilize Nu Green earth friendly core

Options

- Non-standard laminates, contact Spec for pricing
- Custom size spacer tables for restricted spaces
- Other sizes may be available

Radius Corner Tables are recommended for open areas



Corner and Spacer Connecting Tables

Model	Laminate PVF/SE	Weight	Cu.Ft.
22RC/23RC 32 x 32 <i>Radius Corner Table</i>	657	31	2
22SC/23SC 32 x 32 <i>Square Corner Table</i>	657	32	2
22TC45/23TC45 19 x 23 <i>45 degree Corner Table</i>	506	26	2
22ST/23ST 21 x 24 <i>Spacer or End Table</i>	506	21	2

