

# 2000 SERIES Lounge Seating

## LAYOUTS

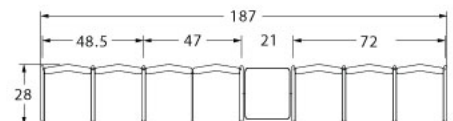
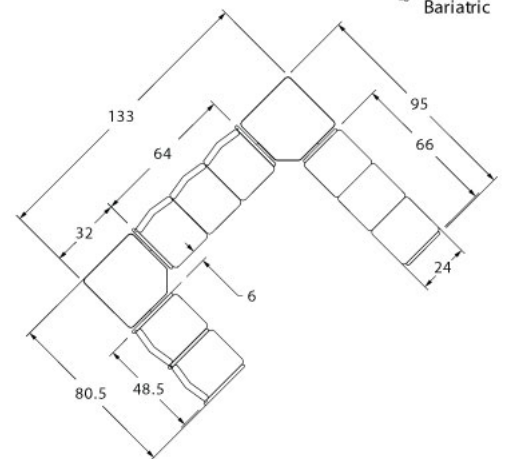
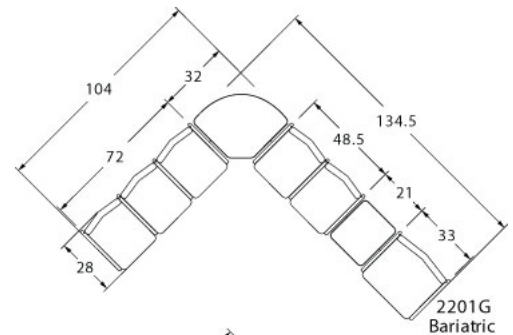


### Description

- A popular choice for healthcare and institutional applications, 2000 Series combines great looks and comfort, with durability to meet real life demands.
- Available in one, two or three seaters as freestanding or connected.
- Your layout possibilities are unlimited with spacer, radius and corner tables – for both standard and bariatric seating in virtually any combination.
- Standard seat width is 22". Bariatric separate seat and back is a 30" wide seat and is load tested to 750 lbs. Cannot be connected to other bariatric seats.
- Zipper removable seats and backs are standard on split back designs.
- All models offer a choice of no center arms or half arm.
- Option of one piece or separate seat and back.
- Standard in 1.5" tube.
- Foam formulated to meet California Bulletin 133 standards is available.
- Please send a drawing of the configuration you require with your order.
- Optional floor mounting is available.
- For fabrics you wish railroaded or repeats larger than 5" x 5", please contact the factory with repeat information and yardage requirement will be provided.



### LAYOUTS AND DIMENSIONS



# 2000 SERIES Lounge Seating



## PLACING AN ORDER IS EASY

### PRODUCT CODE

**2201C**

**Series**  
22 : 2000 Series

**Arm/Other**  
0 : Outside Arm  
1 : Half Arm  
3 : Easy Access Hip Chair

**Number of Seats**  
1 : Single Seater  
2 : Two Seater  
3 : Three Seater

**Chair Type**  
C : One Piece Seat and Back  
CS : Seperate Seat and Back  
G : Bariatric



### OPTIONS

**One-Piece Seat and Back**

**Separate Seat and Back**



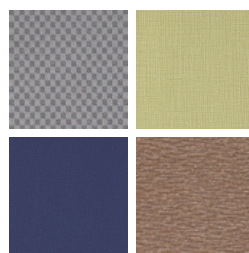
### FINISHES

**FRAME**



Select from one of our 76 standard Spectone colors

**FABRIC**



Select fabrics from one of our textile partners



## 2000 SERIES Lounge Seating

One Piece Single Seater with arms

### Standard Features

- One piece seat and back
- Fully welded 1.5" frame
- Frame in any Spectone color
- Glides
- Use in connected layouts at no upcharge
- Ships assembled as 1, 2 or 3 seaters
- Ships 1/carton 17 cu ft

### Options

- Connecting tables
- Antibacterial and antimicrobial fabrics available
- CAL 133

Contact Spec™ Customer Service to railroad fabrics (specify repeat info and yardage requirement will be provided) and for repeats greater than 5" x 5"



### One Piece Single Seater with arms – Four-point

COM 1.75 yds  
1.75 yd COM per single seat and back

MODEL	COM	GR 1	GR 2	GR 3	GR 4	GR 5	GR 6
<b>2201C</b>	<b>647</b>	<b>730</b>	<b>758</b>	<b>814</b>	<b>899</b>	<b>963</b>	<b>1049</b>

Dimensions (inches)

seat H	18.0	seat W	22.0	arm H	26.0
total H	35.0	total W	25.0	depth	26.5

Exceeds BIFMA Seating Durability Test to 500 lbs per chair  
CAL 133, add \$101 List per chair



**2201C**  
38 lbs



# 2000 SERIES Lounge Seating

One Piece Two and Three Seaters with outside arms

## Standard Features

- One piece seat and back
- Fully welded 1.5" frame
- Frame in any Spectone color
- Glides
- Use in connected layouts at no upcharge
- Ships assembled as 1, 2 or 3 seaters
- Ships 1/carton 28 cu ft (2 seater), 1/carton 42 cu ft (3 seater)

## Options

- Connecting tables
- Antibacterial and antimicrobial fabrics available
- CAL 133

Contact Spec Customer Service to railroad fabrics (specify repeat info and yardage requirement will be provided) and for repeats greater than 5" x 5"



### One Piece Two Seater with outside arms – Four-point

COM 3.5 yds  
1.75 yd COM per single seat and back

MODEL	COM	GR 1	GR 2	GR 3	GR 4	GR 5	GR 6
<b>2202C</b>	<b>1185</b>	<b>1355</b>	<b>1411</b>	<b>1524</b>	<b>1692</b>	<b>1821</b>	<b>1990</b>

Dimensions (inches)

seat H	18.0	seat W	22.0	arm H	26.0
total H	35.0	total W	47.0	depth	26.5

Exceeds BIFMA Seating Durability Test to 500 lbs per two seater  
CAL 133, add \$202 List per two seater



**2202C**  
68 lbs

### One Piece Three Seater with outside arms – Four-point

COM 5.25 yds  
1.75 yd COM per single seat and back

MODEL	COM	GR 1	GR 2	GR 3	GR 4	GR 5	GR 6
<b>2203C</b>	<b>1745</b>	<b>1998</b>	<b>2082</b>	<b>2250</b>	<b>2504</b>	<b>2698</b>	<b>2950</b>

Dimensions (inches)

seat H	18.0	seat W	22.0	arm H	26.0
total H	35.0	total W	69.0	depth	26.5

Exceeds BIFMA Seating Durability Test to 500 lbs per three seater  
CAL 133, add \$303 List per three seater



**2203C**  
98 lbs



# 2000 SERIES Lounge Seating

One Piece Two and Three Seaters with half arms

## Standard Features

- One piece seat and back
- Fully welded 1.5" frame
- Frame in any Spectone color
- Glides
- Use in connected layouts at no upcharge
- Ships assembled as 1, 2 or 3 seaters
- Ships 1/carton 28 cu ft (2 seater), 1/carton 42 cu ft (3 seater)

## Options

- Connecting tables
- Antibacterial and antimicrobial fabrics available
- CAL 133

Contact Spec Customer Service to railroad fabrics (specify repeat info and yardage requirement will be provided) and for repeats greater than 5" x 5"



## One Piece Two Seater with half arms – Four-point

COM 3.5 yds  
1.75 yd COM per single seat and back

MODEL	COM	GR 1	GR 2	GR 3	GR 4	GR 5	GR 6
<b>2212C</b>	<b>1291</b>	<b>1462</b>	<b>1517</b>	<b>1629</b>	<b>1798</b>	<b>1927</b>	<b>2094</b>

Dimensions (inches)

seat H	18.0	seat W	22.0	arm H	26.0
total H	35.0	total W	48.5	depth	26.5

Exceeds BIFMA Seating Durability Test to 500 lbs per two seater  
CAL 133, add \$202 List per two seater



**2212C**  
72 lbs

## One Piece Three Seater with half arms – Four-point

COM 5.25 yds  
1.75 yd COM per single seat and back

MODEL	COM	GR 1	GR 2	GR 3	GR 4	GR 5	GR 6
<b>2213C</b>	<b>1935</b>	<b>2190</b>	<b>2275</b>	<b>2443</b>	<b>2698</b>	<b>2890</b>	<b>3143</b>

Dimensions (inches)

seat H	18.0	seat W	22.0	arm H	26.0
total H	35.0	total W	72.0	depth	26.5

Exceeds BIFMA Seating Durability Test to 500 lbs per three seater  
CAL 133, add \$303 List per three seater



**2213C**  
99 lbs



# 2000 SERIES Lounge Seating

## One Piece Easy Access Hip Single Seater with arms

### Standard Features

- One piece seat and back
- Fully welded 1.5" frame
- Frame in any Spectone color
- Glides
- 24" seat height, no seat pitch (level)
- Footrest which assists entering/exiting chair
- Available only as four-point
- Ships assembled
- Ships 1/carton 19 cu ft

### Options

- Antibacterial and antimicrobial fabrics available
- CAL 133

Contact Spec Customer Service to railroad fabrics (specify repeat info and yardage requirement will be provided) and for repeats greater than 5" x 5"




---

### One Piece Easy Access Hip Single Seater with arms

---

COM 1.75 yds  
1.75 yd COM per single seat and back

MODEL	COM	GR 1	GR 2	GR 3	GR 4	GR 5	GR 6
<b>2231C</b>	<b>743</b>	<b>826</b>	<b>854</b>	<b>911</b>	<b>995</b>	<b>1058</b>	<b>1144</b>

Dimensions (inches)

seat H	24.0	seat W	22.0	arm H	30.5
total H	38.0	total W	25.0	depth	26.5

Exceeds BIFMA Seating Durability Test to 500 lbs per chair  
CAL 133, add \$101 List per chair



**2231C**  
45 lbs

---



## 2000 SERIES Lounge Seating

Separate Seat and Back Single Seater with arms – Four-point

### Standard Features

- Separate seat and back
- Fully welded 1.5" frame
- Frame in any Spectone color
- Glides
- Zippered removable covers
- Use in connected layouts at no upcharge
- Ships assembled as 1, 2 or 3 seaters
- Ships 1/carton 17 cu ft

### Options

- Connecting tables
- Antibacterial and antimicrobial fabrics available
- Different fabric on seat and back at no upcharge
- CAL 133

Contact Spec Customer Service to railroad fabrics (specify repeat info and yardage requirement will be provided) and for repeats greater than 5" x 5"




---

### Separate Seat and Back Single Seater with arms – Four-point

---

COM 1.75 yds  
 1.0 yd COM per single seat  
 0.75 yd COM per single back

MODEL	COM	GR 1	GR 2	GR 3	GR 4	GR 5	GR 6
<b>2201CS</b>	<b>836</b>	<b>920</b>	<b>950</b>	<b>1006</b>	<b>1089</b>	<b>1154</b>	<b>1237</b>

Dimensions (inches)

seat H	18.0	seat W	22.0	arm H	26.0
total H	35.0	total W	25.0	depth	26.5

Exceeds BIFMA Seating Durability Test to 500 lbs per chair  
 CAL 133, add \$101 List per chair



**2201CS**  
38 lbs



## 2000 SERIES Lounge Seating

Separate Seat and Back Two and Three Seaters with outside arms – Four-point

### Standard Features

- Separate seat and back
- Fully welded 1.5" frame
- Frame in any Spectone color
- Glides
- Zippered removable covers
- Use in connected layouts at no upcharge
- Ships assembled as 1, 2 or 3 seaters
- Ships 1/carton 28 cu ft (2 seater),  
1/carton 42 cu ft (3 seater)

### Options

- Connecting tables
- Antibacterial and antimicrobial fabrics available
- Different fabric on seat and back at no upcharge
- CAL 133

Contact Spec Customer Service to railroad fabrics (specify repeat info and yardage requirement will be provided) and for repeats greater than 5" x 5"



### Separate Seat and Back Two Seater with outside arms – Four-point

COM 3.5 yds  
1.0 yd COM per single seat  
0.75 yd COM per single back

MODEL	COM	GR 1	GR 2	GR 3	GR 4	GR 5	GR 6
<b>2202CS</b>	<b>1497</b>	<b>1667</b>	<b>1723</b>	<b>1835</b>	<b>2005</b>	<b>2133</b>	<b>2301</b>

Dimensions (inches)

seat H	18.0	seat W	22.0	arm H	26.0
total H	35.0	total W	47.0	depth	26.5

Exceeds BIFMA Seating Durability Test to 500 lbs per two seater  
CAL 133, add \$202 List per two seater



**2202CS**  
68 lbs

### Separate Seat and Back Three Seater with outside arms – Four-point

COM 5.25 yds  
1.0 yd COM per single seat  
0.75 yd COM per single back

MODEL	COM	GR 1	GR 2	GR 3	GR 4	GR 5	GR 6
<b>2203CS</b>	<b>2220</b>	<b>2472</b>	<b>2556</b>	<b>2723</b>	<b>2978</b>	<b>3172</b>	<b>3425</b>

Dimensions (inches)

seat H	18.0	seat W	22.0	arm H	26.0
total H	35.0	total W	69.0	depth	26.5

Exceeds BIFMA Seating Durability Test to 500 lbs per three seater  
CAL 133, add \$303 List per three seater



**2203CS**  
98 lbs





## 2000 SERIES Lounge Seating

Separate Seat and Back Two and Three Seaters with half arms – Four-point

### Standard Features

- Separate seat and back
- Fully welded 1.5" frame
- Frame in any Spectone color
- Glides
- Zippered removable covers
- Use in connected layouts at no upcharge
- Ships assembled as 1, 2 or 3 seaters
- Ships 1/carton 28 cu ft (2 seater),  
1/carton 42 cu ft (3 seater)

### Options

- Connecting tables
- Antibacterial and antimicrobial fabrics available
- Different fabric on seat and back at no upcharge
- CAL 133

Contact Spec Customer Service to railroad fabrics (specify repeat info and yardage requirement will be provided) and for repeats greater than 5" x 5"



### Separate Seat and Back Two Seater with half arms – Four-point

COM 3.5 yds  
1.0 yd COM per single seat  
0.75 yd COM per single back

MODEL	COM	GR 1	GR 2	GR 3	GR 4	GR 5	GR 6
<b>2212CS</b>	<b>1673</b>	<b>1841</b>	<b>1896</b>	<b>2009</b>	<b>2179</b>	<b>2306</b>	<b>2477</b>

Dimensions (inches)  
seat H 18.0 seat W 22.0 arm H 26.0  
total H 35.0 total W 48.5 depth 26.5

Exceeds BIFMA Seating Durability Test to 500 lbs per two seater  
CAL 133, add \$202 List per two seater



**2212CS**  
72 lbs

### Separate Seat and Back Three Seater with half arms – Four-point

COM 5.25 yds  
1.0 yd COM per single seat  
0.75 yd COM per single back

MODEL	COM	GR 1	GR 2	GR 3	GR 4	GR 5	GR 6
<b>2213CS</b>	<b>2509</b>	<b>2761</b>	<b>2847</b>	<b>3015</b>	<b>3267</b>	<b>3461</b>	<b>3714</b>

Dimensions (inches)  
seat H 18.0 seat W 22.0 arm H 26.0  
total H 35.0 total W 72.0 depth 26.5

Exceeds BIFMA Seating Durability Test to 500 lbs per three seater  
CAL 133, add \$303 List per three seater



**2213CS**  
99 lbs



# 2000 SERIES Lounge Seating

## Separate Seat and Back Bariatric Single Seater with arms

### Standard Features

- Separate seat and back
- Fully welded 1.5" frame
- Frame in any Spectone color
- Glides
- Zippered removable covers
- Use in connected layouts at no upcharge
- Available only as separate seat and back
- Available only as four-point
- Cannot connect bariatric to bariatric seating
- Ships assembled as 1, 2 or 3 seaters
- Ships 1/carton 22 cu ft

### Options

- Connecting tables
- Antibacterial and antimicrobial fabrics available
- Different fabric on seat and back at no upcharge
- CAL 133

Contact Spec Customer Service to railroad fabrics (specify repeat info and yardage requirement will be provided) and for repeats greater than 5" x 5"




---

### Separate Seat and Back Bariatric Single Seater with arms

---

COM 3.0 yds  
 1.5 yd COM per single seat  
 1.5 yd COM per single back

MODEL	COM	GR 1	GR 2	GR 3	GR 4	GR 5	GR 6
<b>2201G</b>	<b>1071</b>	<b>1226</b>	<b>1277</b>	<b>1380</b>	<b>1536</b>	<b>1653</b>	<b>1808</b>

Dimensions (inches)

seat H	18.0	seat W	30.0	arm H	26.0
total H	35.0	total W	33.0	depth	26.5

Exceeds BIFMA Seating Durability Test to 750 lbs per chair  
 CAL 133, add \$125 List per chair



**2201G**  
48 lbs



## 2000 SERIES Lounge Seating

Separate Seat and Back Easy Access Hip Single Seater with arms

### Standard Features

- Separate seat and back
- Fully welded 1.5" frame
- Frame in any Spectone color
- Glides
- Zippered removable covers
- 24" seat height, no seat pitch (level)
- Footrest which assists entering/exiting chair
- Available only as four-point
- Ships assembled
- Ships 1/carton 19 cu ft

### Options

- Antibacterial and antimicrobial fabrics available
- Different fabric on seat and back at no upcharge
- CAL 133

Contact Spec Customer Service to railroad fabrics (specify repeat info and yardage requirement will be provided) and for repeats greater than 5" x 5"




---

### Separate Seat and Back Easy Access Hip Single Seater with arms

---

COM 1.75 yds  
 1.0 yd COM per single seat  
 0.75 yd COM per single back

MODEL	COM	GR 1	GR 2	GR 3	GR 4	GR 5	GR 6
<b>2231CS</b>	<b>932</b>	<b>1016</b>	<b>1046</b>	<b>1102</b>	<b>1184</b>	<b>1250</b>	<b>1333</b>

Dimensions (inches)

seat H	24.0	seat W	22.0	arm H	30.25
total H	38.0	total W	25.0	depth	26.5

Exceeds BIFMA Seating Durability Test to 500 lbs per chair  
 CAL 133, add \$101 List per chair



**2231CS**  
45 lbs



# 2000 SERIES Lounge Seating

Freestanding Lounge Tables  
 Corner and Spacer Connecting Tables

### Standard Features

- Tops in laminate or veneer
- Select from 15 standard laminates or choose any standard Wilsonart, Nevamar, Formica, Arborite and Pionite matte finish laminates at no upcharge
- Table tops available with PVC Flat edge (PVF) or Self edge (SE)
- 9 standard hardwood edge stains. Stain-to-match available at no upcharge.
- Frame in any Spectone color
- Glides
- Tops utilize Nu Green earth friendly core

### Options

- Non-standard laminates, contact Spec for pricing
- Custom size spacer tables for restricted spaces
- Other sizes may be available

*Radius Corner Tables are recommended for open areas*



### Corner and Spacer Connecting Tables

Model	Laminate PVF/SE	Weight	Cu.Ft.
22RC/23RC 32 x 32 <i>Radius Corner Table</i>	<b>657</b>	<b>31</b>	<b>2</b>
22SC/23SC 32 x 32 <i>Square Corner Table</i>	<b>657</b>	<b>32</b>	<b>2</b>
22TC45/23TC45 19 x 23 <i>45 degree Corner Table</i>	<b>506</b>	<b>26</b>	<b>2</b>
22ST/23ST 21 x 24 <i>Spacer or End Table</i>	<b>506</b>	<b>21</b>	<b>2</b>

