

ACUTE TABLES



PLACING AN ORDER IS EASY

PRODUCT CODE

2430 RE T A

Size
Width x Length

Top Shape
D : Round
SQ : Square
RE : Rectangle
RT : Racetrack
B : Bullet
H : Halfmoon
TP : Trapezoid

C90 : Radius
CRC90 : Crescent
BT : Boatshape
BTA : Boatshape Arc

Base
X : X-Base
X4 : 4 Column X-Base
T : T-Base
T2 : Double Column T-Base

Series
Acute



OPTIONS

FLIP TOP



CASTERS

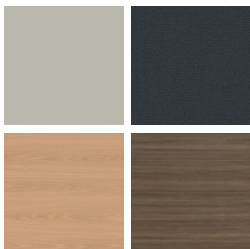


FOLDING



FINISHES

LAMINATE



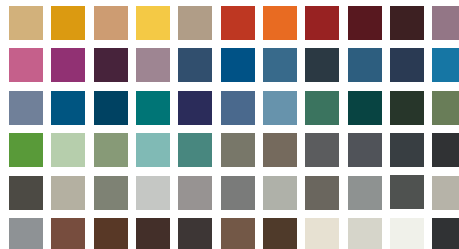
Select from 15 standard laminates or choose any standard Wilsonart, Nevamar, Formica, Arborite and Pionite matte finish laminates at no upcharge

VENEER



Select from one of our 9 standard wood stains or stain-to-match at no upcharge

BASE



Select from one of our 76 standard Spectone colors

EDGE



Check out our website for a complete list of edge profiles.



ACUTE TABLES

GENERAL PURPOSE

MODEL	BASES		TOP SPECIFICATIONS						OPTIONS				LBS
	Code	Qty.	For Laminate Top			For Veneer Top			FLIP TOP (FT)	FOLD* (FL)	HARD CASTERS (HC)	SOFT CASTERS (SC)	
			SE PVF 2MM	HF HB	HBV HBVR HBG	HF2 HB2 HKNR4 HBG2	HF HB HBV HBVR HBG	HF2 HB2 HKNR4 HBG2					
<i>Round</i>													
24D	XA	1	485	821	856	958	1012	1117	144	-	88	188	37
30D	XA	1	582	913	958	1161	1109	1263	144	-	88	188	47
36D	XA	1	674	1154	1238	1404	1455	1668	144	-	88	188	58
42D	XA	1	940	1478	1594	1841	1866	2158	144	-	88	188	72
	X4A	1	1123	1661	1777	2024	2049	2341	-	-	88	188	87
48D	XA	1	962	1684	1810	1933	2375	2751	144	-	88	188	88
	X4A	1	1145	1867	1993	2116	2558	2934	-	-	88	188	103
54D	X4A	1	1416	2480	2676	2863	3084	3565	-	-	-	-	121
60D	X4A	1	1460	2669	2878	3036	3676	4275	-	-	-	-	140
<i>Square</i>													
24 x 24SQ	XA	1	514	696	731	794	840	997	144	-	88	188	37
30 x 30SQ	XA	1	614	746	794	962	901	1117	144	-	88	188	47
36 x 36SQ	XA	1	692	900	958	1154	1161	1348	144	-	88	188	58
42 x 42SQ	XA	1	1098	1399	1492	1585	1649	1905	288	-	-	-	92
	X4A	1	1137	1438	1531	1624	1688	1944	-	-	88	188	87
48 x 48SQ	X4A	1	1281	1545	1643	1686	2040	2369	-	-	88	188	103
54 x 54SQ	X4A	1	1418	2001	2154	2332	2429	2855	-	-	-	-	121
60 x 60SQ	X4A	1	1447	2100	2263	2442	2876	3392	-	-	-	-	140

*Folding tables available with PVC Flat (PVF) edge only.



STANDARD FEATURES

- Select from 15 standard laminates or choose any standard Wilsonart, Nevamar, Formica, Arborite and Pionite matte finish laminates at no upcharge. For other laminate please contact the factory for pricing.
- 9 standard veneer and hardwood edge stains. Stain-to-match available at no upcharge.
- Standard table height 29".
- All bases are standard with floor leveling glides.

OPTIONS

- Custom heights available.
- For applicable Power & Data modules, please see Table Accessories Price List.

HOW TO ORDER

1. Select Model
2. Select Base
3. Select Edge Style
4. Select Options
5. Select Top Finish
6. Select Edge Finish
7. Select Base Finish

Example: 24D - XA - PVF -





ACUTE TABLES GENERAL PURPOSE

MODEL	BASES		TOP SPECIFICATIONS						OPTIONS				LBS
	Code	Qty.	For Laminate Top			For Veneer Top			FLIP TOP (FT)	FOLD* (FL)	HARD CASTERS (HC)	SOFT CASTERS (SC)	
			SE PVF 2MM	HF HB	HBV HBVR HBG	HF2 HB2 HKN4 HKNR4 HBG2	HF HB HBV HBVR HBG	HF2 HB2 HKN4 HKNR4 HBG2					
<i>Rectangle</i>													
24 x 30RE	XA	1	603	727	772	836	886	1008	144	-	-	-	46
	TA	2	707	831	876	940	990	1112	288	-	88	188	54
24 x 36RE	XA	1	603	727	772	836	886	1008	144	-	-	-	46
	TA	2	707	831	876	940	990	1112	288	-	88	188	54
24 x 42RE	TA	2	769	969	1021	1115	1172	1341	288	-	88	188	62
24 x 48RE	TA	2	769	969	1021	1115	1172	1341	288	-	88	188	62
24 x 54RE	TA	2	825	1117	1183	1291	1372	1579	288	-	88	188	70
24 x 60RE	TA	2	825	1117	1183	1291	1372	1579	288	278	88	188	70
24 x 66RE	TA	2	964	1315	1396	1528	1613	1867	288	278	88	188	79
24 x 72RE	TA	2	964	1315	1396	1528	1613	1867	288	278	88	188	79
30 x 36RE	XA	1	692	836	887	969	1028	1175	144	-	-	-	52
	TA	2	796	940	991	1073	1132	1279	288	-	88	188	60
30 x 42RE	XA	1	712	986	1049	1157	1237	1443	144	-	-	-	62
	TA	2	816	1090	1153	1261	1341	1547	288	-	88	188	70
30 x 48RE	XA	1	712	986	1049	1157	1237	1443	144	-	-	-	62
	TA	2	816	1090	1153	1261	1341	1547	288	-	88	188	70
30 x 54RE	TA	2	872	1246	1328	1482	1574	1832	288	278	88	188	81
30 x 60RE	TA	2	872	1246	1328	1482	1574	1832	288	278	88	188	81
30 x 66RE	TA	2	1038	1340	1439	1596	1685	1970	288	278	88	188	91
30 x 72RE	TA	2	1091	1486	1586	1788	1893	2206	288	278	88	188	91

*Folding tables available with PVC Flat (PVF) edge only.



STANDARD FEATURES

- Select from 15 standard laminates or choose any standard Wilsonart, Nevamar, Formica, Arborite and Pionite matte finish laminates at no upcharge. For other laminate please contact the factory for pricing.
- 9 standard veneer and hardwood edge stains. Stain-to-match available at no upcharge.
- Standard table height 29".
- All bases are standard with floor leveling glides.

OPTIONS

- Custom heights available.
- For applicable Power & Data modules, please see Table Accessories Price List.

HOW TO ORDER

1. Select Model
2. Select Base
3. Select Edge Style
4. Select Options
5. Select Top Finish
6. Select Edge Finish
7. Select Base Finish

Example: 2430RE - XA - PVF -





ACUTE TABLES GENERAL PURPOSE

MODEL	BASES		TOP SPECIFICATIONS						OPTIONS				LBS
	Code	Qty.	For Laminate Top			For Veneer Top			FLIP TOP (FT)	FOLD* (FL)	HARD CASTERS (HC)	SOFT CASTERS (SC)	
			SE PVF 2MM	HF HB	HBV HBVR HBG	HF2 HB2 HKNR4 HBG2	HF HB HBV HBVR HBG	HF2 HB2 HKNR4 HBG2					
<i>Rectangle</i>													
30 x 78RE	TA	2	1305	1654	1772	2007	2131	2491	288	278	88	188	102
30 x 84RE	TA	2	1305	1654	1772	2007	2131	2491	288	278	88	188	102
30 x 90RE	TA	2	1325	1865	2007	2224	2370	2780	-	278	88	188	112
30 x 96RE	TA	2	1325	1865	2007	2224	2370	2780	-	278	88	188	112
36 x 42RE	TA	2	911	1117	1196	1304	1387	1603	288	-	88	188	79
36 x 48RE	TA	2	935	1226	1310	1439	1525	1777	288	-	88	188	79
36 x 60RE	TA	2	1027	1432	1535	1699	1803	2118	288	278	88	188	91
36 x 66RE	TA	2	1111	1531	1649	1830	1943	2290	288	278	88	188	104
	T2A	2	1301	1721	1839	2020	2133	2480	-	556	88	188	124
36 x 72RE	TA	2	1147	1586	1699	1960	2086	2461	288	278	88	188	104
	T2A	2	1337	1776	1889	2150	2276	2651	-	556	88	188	124
36 x 78RE	TA	2	1466	1936	2083	2309	2457	2899	-	278	88	188	117
	T2A	2	1656	2126	2273	2499	2647	3089	-	556	88	188	137
36 x 84RE	TA	2	1466	1936	2083	2309	2457	2899	-	278	88	188	117
	T2A	2	1656	2126	2273	2499	2647	3089	-	556	88	188	137
36 x 90RE	TA	2	1472	2141	2309	2573	2743	3233	-	-	88	188	129
	T2A	2	1662	2331	2499	2763	2933	3423	-	556	88	188	149
36 x 96RE	TA	2	1472	2141	2309	2573	2743	3233	-	-	88	188	129
	T2A	2	1662	2331	2499	2763	2933	3423	-	556	88	188	149
42 x 78RE	T2A	2	1887	2291	2452	2842	2970	3482	-	556	88	188	151
42 x 84RE	T2A	2	1887	2291	2452	2842	2970	3482	-	556	88	188	151

*Folding tables available with PVC Flat (PVF) edge only.



2448RE-TA

STANDARD FEATURES

- Select from 15 standard laminates or choose any standard Wilsonart, Nevamar, Formica, Arborite and Pionite matte finish laminates at no upcharge. For other laminate please contact the factory for pricing.
- 9 standard veneer and hardwood edge stains. Stain-to-match available at no upcharge.
- Standard table height 29".
- All bases are standard with floor leveling glides.

OPTIONS

- Custom heights available.
- For applicable Power & Data modules, please see Table Accessories Price List.

HOW TO ORDER

1. Select Model
2. Select Base
3. Select Edge Style
4. Select Options
5. Select Top Finish
6. Select Edge Finish
7. Select Base Finish

Example: 3078RE - TA - PVF -





ACUTE TABLES GENERAL PURPOSE

MODEL	BASES		TOP SPECIFICATIONS						OPTIONS				LBS
	Code	Qty.	For Laminate Top			For Veneer Top			FLIP TOP (FT)	FOLD* (FL)	HARD CASTERS (HC)	SOFT CASTERS (SC)	
			SE PVF 2MM	HF HB	HBV HBVR HBG	HF2 HB2 HKNR4 HBG2	HF HB HBV HBVR HBG	HF2 HB2 HKNR4 HBG2					
<i>Racetrack</i>													
36 x 54RT	TA	2	1080	1613	1738	1960	2051	2376	288	-	88	188	91
	T2A	2	1270	1803	1928	2150	2241	2566	-	-	88	188	111
36 x 60RT	TA	2	1080	1613	1738	1960	2051	2376	288	-	88	188	91
	T2A	2	1270	1803	1928	2150	2241	2566	-	-	88	188	111
36 x 66RT	TA	2	1231	1788	1922	2160	2370	2776	288	-	88	188	104
	T2A	2	1421	1978	2112	2350	2560	2966	-	-	88	188	124
36 x 72RT	TA	2	1231	1788	1922	2160	2370	2776	288	-	88	188	104
	T2A	2	1421	1978	2112	2350	2560	2966	-	-	88	188	124
36 x 78RT	TA	2	1482	2190	2355	2715	2790	3265	-	-	88	188	117
	T2A	2	1672	2380	2545	2905	2980	3455	-	-	88	188	132
36 x 84RT	TA	2	1482	2190	2355	2715	2790	3265	-	-	88	188	117
	T2A	2	1672	2380	2545	2905	2980	3455	-	-	88	188	132
36 x 90RT	TA	2	1486	2430	2627	3030	3124	3664	-	-	88	188	129
	T2A	2	1676	2620	2817	3220	3314	3854	-	-	88	188	149
36 x 96RT	TA	2	1486	2430	2627	3030	3124	3664	-	-	88	188	129
	T2A	2	1676	2620	2817	3220	3314	3854	-	-	88	188	149
42 x 78RT	T2A	2	1901	2570	2773	3180	3278	3824	-	-	88	188	166
42 x 84RT	T2A	2	1901	2570	2773	3180	3278	3824	-	-	88	188	166
48 x 78RT	T2A	2	1904	2858	3088	3448	3673	4293	-	-	88	188	166
48 x 84RT	T2A	2	1904	2858	3088	3448	3673	4293	-	-	88	188	166



*Folding tables available with PVC Flat (PVF) edge only.



2448RE-TA

STANDARD FEATURES

- Select from 15 standard laminates or choose any standard Wilsonart, Nevamar, Formica, Arborite and Pionite matte finish laminates at no upcharge. For other laminate please contact the factory for pricing.
- 9 standard veneer and hardwood edge stains. Stain-to-match available at no upcharge.
- Standard table height 29".
- All bases are standard with floor leveling glides.

OPTIONS

- Custom heights available.
- For applicable Power & Data modules, please see Table Accessories Price List.

HOW TO ORDER

1. Select Model
2. Select Base
3. Select Edge Style
4. Select Options
5. Select Top Finish
6. Select Edge Finish
7. Select Base Finish

Example: 3654RT - TA - PVF -





ACUTE TABLES GENERAL PURPOSE

MODEL	BASES		TOP SPECIFICATIONS						OPTIONS				LBS
	Code	Qty.	For Laminate Top			For Veneer Top			FLIP TOP (FT)	FOLD* (FL)	HARD CASTERS (HC)	SOFT CASTERS (SC)	
			SE PVF 2MM	HF HB	HBV HBVR HBG	HF2 HB2 HKN4 HKNR4 HBG2	HF HB HBV HBVR HBG	HF2 HB2 HKN4 HKNR4 HBG2					
<i>Bullet</i>													
30 x 54B	TA	2	986	1517	1628	1822	1880	2202	288	-	88	188	81
30 x 60B	TA	2	986	1517	1628	1822	1880	2202	288	-	88	188	81
36 x 54B	TA	2	1101	1994	2152	2437	2475	2880	288	-	88	188	91
36 x 60B	TA	2	1101	1994	2152	2437	2475	2880	288	-	88	188	91
36 x 72B	TA	2	1230	2217	2392	2696	2872	3380	288	-	88	188	104
<i>Halfmoon</i>													
24 x 48H	TA	2	785	1265	1385	1531	1649	1922	288	-	88	188	62
30 x 60H	TA	2	986	1700	1866	2030	2235	2624	288	-	88	188	81
36 x 72H	TA	2	1230	2205	2420	2621	2955	3481	288	-	88	188	104
<i>Trapezoid</i>													
30 x 60TP	TA	2	986	1426	1528	1705	1756	2054	288	-	88	188	81
36 x 72TP	TA	2	1230	1826	1961	2267	2343	2772	288	-	88	188	104
<i>Radius</i>													
24 x 24	24RC90	-	369	669	756	867	888	1064	-	-	-	-	17
30 x 30	30RC90	-	471	885	995	1116	1179	1415	-	-	-	-	27
<i>Crescent</i>													
30 x 36	3036CRC90-TA	1	752	1392	1473	1536	1740	1963	-	-	-	-	46
36 x 42	3642CRC90-TA	1	1091	1692	1802	1886	2165	2468	-	-	-	-	59

*Folding tables available with PVC Flat (PVF) edge only.



2448RE-TA

STANDARD FEATURES

- Select from 15 standard laminates or choose any standard Wilsonart, Nevamar, Formica, Arborite and Pionite matte finish laminates at no upcharge. For other laminate please contact the factory for pricing.
- 9 standard veneer and hardwood edge stains. Stain-to-match available at no upcharge.
- Standard table height 29".
- All bases are standard with floor leveling glides.

OPTIONS

- Custom heights available.
- For applicable Power & Data modules, please see Table Accessories Price List.

HOW TO ORDER

1. Select Model
2. Select Base
3. Select Edge Style
4. Select Options
5. Select Top Finish
6. Select Edge Finish
7. Select Base Finish

Example: 3054B - TA - PVF -





ACUTE TABLES BOARDROOM

MODEL	BASES		TOP SPECIFICATIONS						OPTIONS	LBS
	Code	Qty.	For Laminate Top			For Veneer Top				
			SE PVF 2MM	HF HB	HBV HBVR HBG	HF2 HB2 HKN4 HKNR4 HBG2	HF HB HBV HBVR HBG	HF2 HB2 HKN4 HKNR4 HBG2		
<i>Rectangle</i>										
42 x 96RE	T2A	2	1936	2786	3016	3248	3592	4257		183
48 x 96RE	T2A	2	1936	2786	3016	3248	3592	4257		183
48 x 120RE	T2A	3	2558	3655	3915	4475	4558	5335		240
48 x 144RE	T2A	3	2928	4501	4843	5376	5250	6185		274
48 x 168RE	T2A	3	3399	4982	5372	6117	5945	7032		308
60 x 120RE	T2A	3	3010	4650	5008	5562	5430	6405		282
60 x 144RE	T2A	3	3429	5397	5826	6489	6333	7502		324
60 x 168RE	T2A	3	3848	6144	6642	7419	7235	8599		366
<i>Racetrack</i>										
42 x 96RT	T2A	2	1956	2916	3150	3713	4111	4820		183
48 x 96RT	T2A	2	1956	2916	3150	3713	4111	4820		183
48 x 120RT	T2A	3	2583	4107	4412	5188	5155	5983		240
48 x 144RT	T2A	3	2956	4854	5228	6190	5967	6971		274
48 x 168RT	T2A	3	3429	5493	5930	6998	6790	7954		308
60 x 120RT	T2A	3	3000	4904	5283	6258	6214	7253		282
60 x 144RT	T2A	3	3466	5837	6307	7511	7231	8485		324
60 x 168RT	T2A	3	4059	6639	7185	8516	8259	9713		366



2448RE-TA

STANDARD FEATURES

- Select from 15 standard laminates or choose any standard Wilsonart, Nevamar, Formica, Arborite and Pionite matte finish laminates at no upcharge. For other laminate please contact the factory for pricing.
- 9 standard veneer and hardwood edge stains. Stain-to-match available at no upcharge.
- Standard table height 29".
- All bases are standard with floor leveling glides.

OPTIONS

- Custom heights available.
- For applicable Power & Data modules, please see Table Accessories Price List.

HOW TO ORDER

1. Select Model
2. Select Base
3. Select Edge Style
4. Select Top Finish
5. Select Edge Finish
6. Select Base Finish

Example: 4296RE - T2A - PVF





ACUTE TABLES BOARDROOM

MODEL	BASES		TOP SPECIFICATIONS						OPTIONS	LBS
	Code	Qty.	For Laminate Top			For Veneer Top				
			SE PVF 2MM	HF HB	HBV HBVR HBG	HF2 HB2 HKN4 HKNR4 HBG2	HF HB HBV HBVR HBG	HF2 HB2 HKN4 HKNR4 HBG2		
<i>Boatshape</i>										
42 x 96BT	T2A	2	1956	3571	3872	4182	4622	5008		183
48 x 96BT	T2A	2	1956	3571	3872	4182	4622	5008		183
48 x 120BT	T2A	3	2583	4825	5198	5591	5759	6205		240
48 x 144BT	T2A	3	2956	5572	6017	6489	7085	7491		274
48 x 168BT	T2A	3	3429	6287	6804	7350	7629	8256		308
60 x 120BT	T2A	3	3000	5800	6269	6760	6971	7526		282
60 x 144BT	T2A	3	3466	6737	7293	7884	8626	9135		324
60 x 168BT	T2A	3	4059	7632	8277	8960	9304	10091		366
<i>Boatshape</i>										
<i>Arc Ends</i>										
42 x 96BTA	T2A	2	2120	4086	4388	4700	5137	5524		183
48 x 96BTA	T2A	2	2120	4086	4388	4700	5137	5524		183
48 x 120BTA	T2A	3	2747	5342	5715	6109	6276	6720		240
48 x 144BTA	T2A	3	3120	6087	6535	7007	7600	8008		274
48 x 168BTA	T2A	3	3594	6804	7323	7868	8144	8774		308
60 x 120BTA	T2A	3	3206	6448	6914	7406	7615	8170		282
60 x 144BTA	T2A	3	3670	7381	7940	8529	9272	9779		324
60 x 168BTA	T2A	3	4263	8277	8923	9603	9952	10739		366



2448RE-TA

STANDARD FEATURES

- Select from 15 standard laminates or choose any standard Wilsonart, Nevamar, Formica, Arborite and Pionite matte finish laminates at no upcharge. For other laminate please contact the factory for pricing.
- 9 standard veneer and hardwood edge stains. Stain-to-match available at no upcharge.
- Standard table height 29".
- All bases are standard with floor leveling glides.

OPTIONS

- Custom heights available.
- For applicable Power & Data modules, please see Table Accessories Price List.

HOW TO ORDER

1. Select Model
2. Select Base
3. Select Edge Style
4. Select Top Finish
5. Select Edge Finish
6. Select Base Finish

Example: 4296BT - T2A - PVF

