



COOPER COLLECTION - BALA Lounge Seating

LAYOUTS

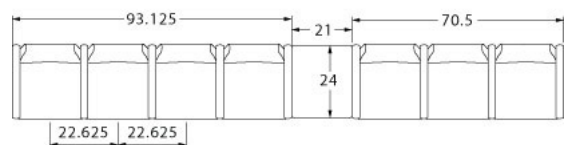
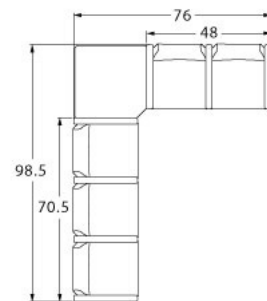
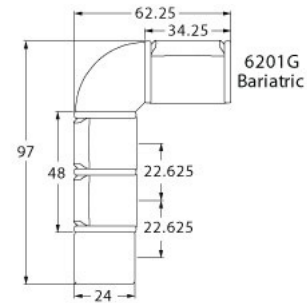


Description

- Spec's Bala offers the softer look and feel of wood, without sacrificing high durability.
- Your layout possibilities are unlimited with spacer, radius and corner tables – for both standard and bariatric seating in virtually any combination.
- Bariatric seating is a 30" wide seat and is load tested to 750 lbs. Cannot be connected to other bariatric seats.
- 21" seat width is standard.
- Standard in European Beech in any of 9 standard stains or stain-to-match at no upcharge.
- Choice of wood or polyurethane arms which are replaceable in the field.
- All models offer a choice of no center arms, half arms or full arms to the floor.
- Glides and separate seat and back are standard.
- Foam formulated to meet California Bulletin 133 standards is available.
- Please send a drawing of the configuration you require with your order.
- Ships assembled as one, two and three seater units.
- For fabrics you wish railroaded or repeats larger than 5" x 5", please contact the factory with repeat information and yardage requirement will be provided.



LAYOUTS AND DIMENSIONS





Pricing August 2017
Discount 57.7% from List prices



COOPER COLLECTION - BALA Lounge Seating



PLACING AN ORDER IS EASY

PRODUCT CODE

6201M - WF

Collection

6 : Cooper

Series

2 : Bala

Center Arm

0 : Outside Arms
1 : Half Arms
2 : Full Arms

Number of Seats

1 : Single Seater
2 : Two Seater
3 : Three Seater

Chair Type

M : Mid Back
H : Highback
G : Bariatric
ME : Hip Chair
B : Bench
BG : Bariatric Bench
L : Loveseat

Arm Type

WF : Wood Flat Profile
WR : Wood Round Profile
PF : Poly Flat Profile
PR : Poly Round Profile



OPTIONS

ARM TYPE



Polyurethane



Wood



KYDEX®

PANEL ARMS



Half Arm Panel



Full Arm Panel

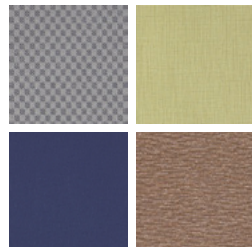
FINISHES

FRAME



Select from one of our 9 standard wood stains or stain-to-match at no upcharge

FABRIC



Select fabrics from one of our textile partners

ARMS



Taupe Wood*
*Wood arms are available in 9 standard stains or stain-to-match at no upcharge.

Note: flat poly arm available in Black only.



COOPER COLLECTION - BALA Lounge Seating

Designed for today's healthcare facilities
Single Seater with arms

Standard Features

- Separate seat and back
- Wood components in Beech, in any of 9 standard stains or stain-to-match at no upcharge
- Threaded replaceable glides
- Use in connected layouts at no upcharge
- Velcro removable back covers
- Replaceable seats
- Arms replaceable in the field
- Ships assembled as 1, 2 or 3 seaters
- Ships 1/carton 15 cu ft

Contact Spec™ Customer Service to railroad fabrics (specify repeat info and yardage requirement will be provided) and for repeats greater than 5" x 5"

Options

- Wood or polyurethane arms available in flat (WF or PF) or rounded (WR or PR) profile
- Round polyurethane arms available in Black, Sterling Grey and Taupe (RAL 7006)
- Flat polyurethane arms available in Black only
- KYDEX® flat arms available in Black (B) or Taupe RAL 7006 (T) or Sterling Grey (G)
- Add 2.5" to back for overall height of 36.5", add \$45 List/single seat
- Connected and freestanding tables
- 3" clear Cooper Leg Guard, add \$11 List/leg
- Antibacterial and antimicrobial fabrics available
- Different fabric on seat and back at no upcharge
- CAL 133



Single Seater with arms

COM 1.75 yds
0.75 yd COM per single seat
1.0 yd COM per single back

MODEL	COM	GR 1	GR 2	GR 3	GR 4	GR 5	GR 6
6201M	1017	1102	1130	1185	1271	1334	1419

Dimensions (inches)

seat H	18.0	seat W	21.0	arm H	25.0
total H	33.75	total W	25.25	depth	25.0

For KYDEX® flat arms add suffix K and \$256

Exceeds BIFMA Seating Durability Test to 500 lbs per chair
CAL 133, add \$112 List per chair



6201M
27 lbs



COOPER COLLECTION - BALA Lounge Seating

Designed for today's healthcare facilities
Two and Three Seaters with outside arms

Standard Features

- Separate seat and back
- Wood components in Beech, in any of 9 standard stains or stain-to-match at no upcharge
- Threaded replaceable glides
- Use in connected layouts at no upcharge
- Velcro removable back covers
- Replaceable seats
- Arms replaceable in the field
- Ships assembled as 1, 2 or 3 seaters
- Ships 1/carton 26 cu ft (2 seater),
1/carton 39 cu ft (3 seater)

Contact Spec Customer Service to railroad fabrics (specify repeat info and yardage requirement will be provided) and for repeats greater than 5" x 5"

Options

- Wood or polyurethane arms available in flat (WF or PF) or rounded (WR or PR) profile
- Round polyurethane arms available in Black, Sterling Grey and Taupe (RAL 7006)
- Flat polyurethane arms available in Black only
- KYDEX® flat arms available in Black (B) or Taupe RAL 7006 (T) or Sterling Grey (G)
- Add 2.5" to back for overall height of 36.5", add \$45 List/single seat
- Connected and freestanding tables
- 3" clear Cooper Leg Guard, add \$11 List/leg
- Antibacterial and antimicrobial fabrics available
- Different fabric on seat and back at no upcharge
- CAL 133



Two Seater with outside arms

COM 3.5 yds
0.75 yd COM per single seat
1.0 yd COM per single back

MODEL	COM	GR 1	GR 2	GR 3	GR 4	GR 5	GR 6
6202M	1466	1634	1691	1803	1972	2101	2270

Dimensions (inches)
seat H 18.0 seat W 21.0 arm H 25.0
total H 33.75 total W 46.5 depth 25.0

For KYDEX® flat arms add suffix K and \$256
Exceeds BIFMA Seating Durability Test to 750 lbs per two seater
CAL 133, add \$224 List per two seater



6202M
51 lbs

Three Seater with outside arms

COM 5.25 yds
0.75 yd COM per single seat
1.0 yd COM per single back

MODEL	COM	GR 1	GR 2	GR 3	GR 4	GR 5	GR 6
6203M	1916	2171	2253	2424	2674	2868	3123

Dimensions (inches)
seat H 18.0 seat W 21.0 arm H 25.0
total H 33.75 total W 67.5 depth 25.0

For KYDEX® flat arms add suffix K and \$256
Exceeds BIFMA Seating Durability Test to 1000 lbs per three seater
CAL 133, add \$336 List per three seater



6203M
75 lbs



COOPER COLLECTION - BALA Lounge Seating

Designed for today's healthcare facilities
Two and Three Seaters with half arms

Standard Features

- Separate seat and back
- Wood components in Beech, in any of 9 standard stains or stain-to-match at no upcharge
- Threaded replaceable glides
- Use in connected layouts at no upcharge
- Velcro removable back covers
- Replaceable seats
- Arms replaceable in the field
- Ships assembled as 1, 2 or 3 seaters
- Ships 1/carton 26 cu ft (2 seater),
1/carton 39 cu ft (3 seater)

Contact Spec Customer Service to railroad fabrics (specify repeat info and yardage requirement will be provided) and for repeats greater than 5" x 5"

Options

- Wood or polyurethane arms available in flat (WF or PF) or rounded (WR or PR) profile
- Round polyurethane arms available in Black, Sterling Grey and Taupe (RAL 7006)
- Flat polyurethane arms available in Black only
- KYDEX® flat arms available in Black (B) or Taupe RAL 7006 (T) or Sterling Grey (G)
- Add 2.5" to back for overall height of 36.5", add \$45 List/single seat
- Connected and freestanding tables
- 3" clear Cooper Leg Guard, add \$11 List/leg
- Antibacterial and antimicrobial fabrics available
- Different fabric on seat and back at no upcharge
- CAL 133



Two Seater with half arms

COM 3.5 yds
0.75 yd COM per single seat
1.0 yd COM per single back

MODEL	COM	GR 1	GR 2	GR 3	GR 4	GR 5	GR 6
6212M	1880	2049	2107	2219	2388	2514	2686

Dimensions (inches)
seat H 18.0 seat W 21.0 arm H 25.0
total H 33.75 total W 48.0 depth 25.0

For KYDEX® flat arms add suffix K and \$384
Exceeds BIFMA Seating Durability Test to 750 lbs per two seater
CAL 133, add \$224 List per two seater



6212M
51 lbs

Three Seater with half arms

COM 5.25 yds
0.75 yd COM per single seat
1.0 yd COM per single back

MODEL	COM	GR 1	GR 2	GR 3	GR 4	GR 5	GR 6
6213M	2745	3000	3084	3252	3506	3698	3951

Dimensions (inches)
seat H 18.0 seat W 21.0 arm H 25.0
total H 33.75 total W 70.5 depth 25.0

For KYDEX® flat arms add suffix K and \$512
Exceeds BIFMA Seating Durability Test to 1000 lbs per three seater
CAL 133, add \$336 List per three seater



6213M
75 lbs



COOPER COLLECTION - BALA Lounge Seating

Designed for today's healthcare facilities
Two and Three Seaters with full arms

Standard Features

- Separate seat and back
- Wood components in Beech, in any of 9 standard stains or stain-to-match at no upcharge
- Threaded replaceable glides
- Use in connected layouts at no upcharge
- Velcro removable back covers
- Replaceable seats
- Arms replaceable in the field
- Ships assembled as 1, 2 or 3 seaters
- Ships 1/carton 26 cu ft (2 seater),
1/carton 39 cu ft (3 seater)

Contact Spec Customer Service to railroad fabrics (specify repeat info and yardage requirement will be provided) and for repeats greater than 5" x 5"

Options

- Wood or polyurethane arms available in flat (WF or PF) or rounded (WR or PR) profile
- Round polyurethane arms available in Black, Sterling Grey and Taupe (RAL 7006)
- Flat polyurethane arms available in Black only
- KYDEX® flat arms available in Black (B) or Taupe RAL 7006 (T) or Sterling Grey (G)
- Add 2.5" to back for overall height of 36.5", add \$45 List/single seat
- Connected and freestanding tables
- 3" clear Cooper Leg Guard, add \$11 List/leg
- Antibacterial and antimicrobial fabrics available
- Different fabric on seat and back at no upcharge
- CAL 133



Two Seater with full arms

COM 3.5 yds
0.75 yd COM per single seat
1.0 yd COM per single back

MODEL	COM	GR 1	GR 2	GR 3	GR 4	GR 5	GR 6
6222M	1880	2049	2107	2219	2388	2514	2686

Dimensions (inches)
seat H 18.0 seat W 21.0 arm H 25.0
total H 33.75 total W 48.0 depth 25.0

For KYDEX® flat arms add suffix K and \$384
Exceeds BIFMA Seating Durability Test to 750 lbs per two seater
CAL 133, add \$224 List per two seater



6222M
51 lbs

Three Seater with full arms

COM 5.25 yds
0.75 yd COM per single seat
1.0 yd COM per single back

MODEL	COM	GR 1	GR 2	GR 3	GR 4	GR 5	GR 6
6223M	2745	3000	3084	3252	3506	3698	3951

Dimensions (inches)
seat H 18.0 seat W 21.0 arm H 25.0
total H 33.75 total W 70.5 depth 25.0

For KYDEX® flat arms add suffix K and \$512
Exceeds BIFMA Seating Durability Test to 1000 lbs per three seater
CAL 133, add \$336 List per three seater



6223M
75 lbs



COOPER COLLECTION - BALA Lounge Seating

Designed for today's healthcare facilities

Loveseat with arms

Standard Features

- Separate seat and back
- Wood components in Beech, in any of 9 standard stains or stain-to-match at no upcharge
- Threaded replaceable glides
- Use in connected layouts at no upcharge
- Velcro removable back covers
- Replaceable seats
- Arms replaceable in the field
- Ships assembled as 1, 2 or 3 seaters
- Ships 1/carton 20 cu ft

Contact Spec Customer Service to railroad fabrics (specify repeat info and yardage requirement will be provided) and for repeats greater than 5" x 5"

Options

- Wood or polyurethane arms available in flat (WF or PF) or rounded (WR or PR) profile
- Round polyurethane arms available in Black, Sterling Grey and Taupe (RAL 7006)
- Flat polyurethane arms available in Black only
- KYDEX® flat arms available in Black (B) or Taupe RAL 7006 (T) or Sterling Grey (G)
- Connected and freestanding tables
- 3" clear Cooper Leg Guard, add \$11 List/leg
- Antibacterial and antimicrobial fabrics available
- Different fabric on seat and back at no upcharge
- CAL 133



Loveseat with arms

COM 4.0 yds

2.0 yd COM per single seat

2.0 yd COM per single back

MODEL	COM	GR 1	GR 2	GR 3	GR 4	GR 5	GR 6
6201L	1587	1783	1848	1982	2175	2327	2526

Dimensions (inches)

seat H	18.0	seat W	42.0	arm H	25.0
total H	33.75	total W	44.75	depth	25.0

For KYDEX® flat arms add suffix K and \$256

Exceeds BIFMA Seating Durability Test to 750 lbs per chair

CAL 133, add \$172 List per chair



6201L
51 lbs



COOPER COLLECTION - BALA Lounge Seating

Designed for today's healthcare facilities
Bariatric Single Seater with arms

Standard Features

- Separate seat and back
- Wood components in Beech, in any of 9 standard stains or stain-to-match at no upcharge
- Threaded replaceable glides
- Use in connected layouts at no upcharge
- Velcro removable back covers
- Replaceable seats
- Arms replaceable in the field
- Ships assembled as 1, 2 or 3 seaters
- Ships 1/carton 20 cu ft

Contact Spec Customer Service to railroad fabrics (specify repeat info and yardage requirement will be provided) and for repeats greater than 5" x 5"

Options

- Wood or polyurethane arms available in flat (WF or PF) or rounded (WR or PR) profile
- Round polyurethane arms available in Black, Sterling Grey and Taupe (RAL 7006)
- Flat polyurethane arms available in Black only
- KYDEX® flat arms available in Black (B) or Taupe RAL 7006 (T) or Sterling Grey (G)
- Connected and freestanding tables
- 3" clear Cooper Leg Guard, add \$11 List/leg
- Antibacterial and antimicrobial fabrics available
- Different fabric on seat and back at no upcharge
- CAL 133



Bariatric Single Seater with arms

COM 3.0 yds
1.5 yd COM per single seat
1.5 yd COM per single back

MODEL	COM	GR 1	GR 2	GR 3	GR 4	GR 5	GR 6
6201G	1210	1379	1435	1547	1716	1844	2012

Dimensions (inches)

seat H	18.0	seat W	30.0	arm H	25.0
total H	33.75	total W	34.25	depth	25.0

For KYDEX® flat arms add suffix K and \$256

Exceeds BIFMA Seating Durability Test to 750 lbs per chair
CAL 133, add \$140 List per chair



6201G
34 lbs



COOPER COLLECTION - BALA Lounge Seating

Designed for today's healthcare facilities

Highback Single Seater with arms – Ottoman and Headrest

Standard Features

- Separate seat and back
- Wood components in Beech, in any of 9 standard stains or stain-to-match at no upcharge
- Threaded replaceable glides
- Use in connected layouts at no upcharge
- Velcro removable back covers
- Replaceable seats
- Arms replaceable in the field
- Ships assembled as 1, 2 or 3 seaters
- Ships 1/carton 19 cu ft
- Ottoman ships 1/carton 5 cu ft

Contact Spec Customer Service to railroad fabrics (specify repeat info and yardage requirement will be provided) and for repeats greater than 5" x 5"

Options

- Wood or polyurethane arms available in flat (WF or PF) or rounded (WR or PR) profile
- Round polyurethane arms available in Black, Sterling Grey and Taupe (RAL 7006)
- Flat polyurethane arms available in Black only
- KYDEX® flat arms available in Black (B) or Taupe RAL 7006 (T) or Sterling Grey (G)
- Built-in headrest or removable headrest with velcro strap
- Connected and freestanding tables
- 3" clear Cooper Leg Guard, add \$11 List/leg
- Antibacterial and antimicrobial fabrics available
- Different fabric on seat and back at no upcharge
- CAL 133



Highback Single Seater with arms

COM 2.5 yds
0.75 yd COM per single seat
1.75 yds COM per single back

MODEL	COM	GR 1	GR 2	GR 3	GR 4	GR 5	GR 6
6201H	1088	1219	1264	1354	1485	1587	1754

Dimensions (inches)

seat H	18.0	seat W	21.0	arm H	25.0
total H	47.5	total W	25.25	depth	25.0

For KYDEX® flat arms add suffix K and \$256

Exceeds BIFMA Seating Durability Test to 500 lbs per chair
CAL 133, add \$125 List per chair



6201H
35 lbs

Ottoman and Headrest

0.5 yd COM per ottoman
0.5 yd COM per headrest

MODEL	COM	GR 1	GR 2	GR 3	GR 4	GR 5	GR 6
6230F	461	492	505	525	561	584	630
60HR	64	74	86	94	108	118	135

Ottoman Dimensions (inches)

H	11.5	W	19.25	depth	12.25
---	------	---	-------	-------	-------

CAL 133, add \$51 List per ottoman/\$51 List per Headrest



6230F
16 lbs



60HR
1 lbs



Pricing August 2017
Discount 57.7% from List prices



SIN 711-16

COOPER COLLECTION - BALA Lounge Seating

Designed for today's healthcare facilities
Half and Full Panel Arms

Options

To order half panel arms, add Z to model number,
e.g. 6201**Z**

- Antibacterial and antimicrobial fabrics available
- CAL 133

To order full panel arms, add ZC to model number,
e.g. 6201**ZC**

Pricing is for one half panel arm, e.g. for a single seater chair with half panel arms, add two half panel arms to cost of chair

Contact Spec Customer Service to railroad fabrics (specify repeat info and yardage requirement will be provided) and for repeats greater than 5" x 5"



Half and Full Panel Arms

COM 0.5 yds per half panel arm

MODEL	COM	GR 1	GR 2	GR 3	GR 4	GR 5	GR 6
Z	72	95	101	116	139	155	181

COM 0.75 yds per full panel arm

MODEL	COM	GR 1	GR 2	GR 3	GR 4	GR 5	GR 6
ZC	137	179	193	220	263	297	325

CAL 133, add \$39 List per half panel arm / \$75 List per full panel arm



1.5 lbs per half panel arm



3 lbs per full panel arm



COOPER COLLECTION - BALA Lounge Seating

Designed for today's healthcare facilities
Easy Access Hip Single Seater with arms

Standard Features

- Separate seat and back
- Wood components in Beech, in any of 9 standard stains or stain-to-match at no upcharge
- Threaded replaceable glides
- 24" seat height, no seat pitch (level)
- Footrest which assists entering/exiting chair
- Velcro replaceable back covers
- Replaceable seats
- Arms replaceable in the field
- Ships assembled
- Ships 1/carton 19 cu ft

Options

- Wood or polyurethane arms available in flat (WF or PF) or rounded (WR or PR) profile
- Round polyurethane arms available in Black, Sterling Grey and Taupe (RAL 7006)
- Flat polyurethane arms available in Black only
- KYDEX® flat arms available in Black (B) or Taupe RAL 7006 (T) or Sterling Grey (G)
- 3" clear Cooper Leg Guard, add \$11 List/leg
- Antibacterial and antimicrobial fabrics available
- Different fabric on seat and back at no upcharge
- CAL 133

Contact Spec Customer Service to railroad fabrics (specify repeat info and yardage requirement will be provided) and for repeats greater than 5" x 5"



Easy Access Hip Single Seater with arms

COM 1.75 yds
0.75 yd COM per single seat
1.0 yd COM per single back

MODEL	COM	GR 1	GR 2	GR 3	GR 4	GR 5	GR 6
6201ME	1226	1311	1338	1394	1479	1542	1628

Dimensions (inches)

seat H	24.0	seat W	21.0	arm H	32.0
total H	46.0	total W	25.25	depth	25.0

For KYDEX® flat arms add suffix K and \$256
Exceeds BIFMA Seating Durability Test to 500 lbs per chair
CAL 133, add \$112 List per chair



6201ME
35 lbs



COOPER COLLECTION - BALA Lounge Seating

Designed for today's healthcare facilities
Single and Two Seater Benches

Standard Features

- Wood components in Beech, in any of 9 standard stains or stain-to-match at no upcharge
- Threaded replaceable glides
- Use in connected layouts at no upcharge
- Velcro removable back covers
- Replaceable seats
- Arms replaceable in the field
- Ships assembled as 1, 2 or 3 seaters
- Ships 1/carton 9 cu ft (single seater), 14 cu ft (2 seater), 21 cu ft (3 seater)

Options

- Bariatric benches available in Cooper Bala and Cooper Mission
- 3" clear Cooper Leg Guard, add \$11 List/leg
- Antibacterial and antimicrobial fabrics available
- CAL 133

Contact Spec Customer Service to railroad fabrics (specify repeat info and yardage requirement will be provided) and for repeats greater than 5" x 5"

Single Seater Bench

COM 1.0 yds
1.0 yd COM per single seat

MODEL	COM	GR 1	GR 2	GR 3	GR 4	GR 5	GR 6
6201B	798	851	870	907	963	1005	1082

No arms

6201B	1020	1076	1094	1131	1185	1230	1311
--------------	-------------	-------------	-------------	-------------	-------------	-------------	-------------

End arms (WF/WR or PF/PR)

Dimensions (inches)

	seat H	18.0	seat W	21.0	arm H	24.0	depth	26.25
total H	N/A		total W	24.25	total W	25.25		
			w/o arms		w/end arms			

Exceeds BIFMA Seating Durability Test to 500 lbs per bench
CAL 133, add \$51 List per bench



6201B
22 lbs

SIN 711-16

Two Seater Bench

COM 2.0 yds
1.0 yd COM per single seat

MODEL	COM	GR 1	GR 2	GR 3	GR 4	GR 5	GR 6
6202B	1037	1148	1183	1258	1369	1451	1595

No arms

6202B	1261	1371	1409	1481	1592	1676	1823
--------------	-------------	-------------	-------------	-------------	-------------	-------------	-------------

End arms (WF/WR or PF/PR)

6212B	1583	1694	1731	1804	1915	1998	2153
--------------	-------------	-------------	-------------	-------------	-------------	-------------	-------------

Arms between and at ends (WF/WR or PF/PR)

Dimensions (inches)

	seat H	18.0	seat W	21.0	arm H	24.0	depth	26.25
total H	N/A		total W	45.25	total W	46.25	total W	47.75
			w/o arms		w/end arms		w/arms between and at ends	

Exceeds BIFMA Seating Durability Test to 750 lbs per two seat bench
CAL 133, add \$102 List per two seat bench



6202B
41 lbs

SIN 711-17



COOPER COLLECTION - BALA Lounge Seating

Designed for today's healthcare facilities
Three Seater Bench

Standard Features

- Wood components in Beech, in any of 9 standard stains or stain-to-match at no upcharge
- Use in connected layouts at no upcharge
- Threaded replaceable glides
- Velcro removable back covers
- Replaceable seats
- Arms replaceable in the field
- Ships assembled as 1, 2 or 3 seaters
- Ships 1/carton 9 cu ft (single seater), 14 cu ft (2 seater), 21 cu ft (3 seater)

Options

- Bariatric benches available in Cooper Bala and Cooper Mission
- 3" clear Cooper Leg Guard, add \$11 List/leg
- Antibacterial and antimicrobial fabrics available
- CAL 133

Contact Spec Customer Service to railroad fabrics (specify repeat info and yardage requirement will be provided) and for repeats greater than 5" x 5"



Three Seater Bench

COM 3.0 yds
1.0 yd COM per single seat

MODEL	COM	GR 1	GR 2	GR 3	GR 4	GR 5	GR 6
6203B	1337	1502	1558	1668	1834	1960	2171

No arms

6203B	1558	1723	1779	1890	2056	2180	2395
--------------	-------------	-------------	-------------	-------------	-------------	-------------	-------------

End arms (WF/WR or PF/PR)

6213B	2261	2428	2483	2592	2757	2884	3113
--------------	-------------	-------------	-------------	-------------	-------------	-------------	-------------

Arms between and at ends (WF/WR or PF/PR)

Dimensions (inches)

seat H	18.0	seat W	21.0	arm H	24.0	depth	26.25
total H	N/A	total W	66.25	total W	67.25	total W	70.50
		w/o arms		w/end arms		w/arms between and at ends	



6203B
60 lbs

Exceeds BIFMA Seating Durability Test to 1000 lbs per three seat bench
CAL 133, add \$153 List per three seat bench





COOPER COLLECTION - BALA Lounge Seating

Designed for today's healthcare facilities
Bariatric Single and Two Seater Benches

Standard Features

- Wood components in Beech, in any of 9 standard stains or stain-to-match at no upcharge
- Bariatric seating cannot connect to bariatric seating
- Threaded replaceable glides
- Use in connected layouts at no upcharge
- Velcro removable back covers
- Replaceable seats
- Arms replaceable in the field
- Ships assembled as 1, 2 or 3 seaters
- Ships 1/carton 15 cu ft (single seater), 20 cu ft (2 seater)

Options

- Wood or polyurethane arms, in flat (WF or PF) or rounded (WR or PR) profile, 6" in height, at ends of bench and between seats
- Round polyurethane arms available in Black, Sterling Grey and Taupe (RAL 7006)
- Flat polyurethane arms available in Black only
- KYDEX® flat arms available in Black (B) or Taupe RAL 7006 (T) or Sterling Grey (G)
- 3" clear Cooper Leg Guard, add \$11 List/leg
- Antibacterial and antimicrobial fabrics available
- CAL 133

Contact Spec Customer Service to railroad fabrics (specify repeat info and yardage requirement will be provided) and for repeats greater than 5" x 5"



Bariatric Single Seater Bench

SIN 711-16

COM 1.5 yds
1.5 yd COM per single seat

MODEL	COM	GR 1	GR 2	GR 3	GR 4	GR 5	GR 6
6201BG	1176	1237	1259	1301	1365	1414	1507

End arms (WF/WR or PF/PR)

Dimensions (inches)

	seat H	18.0	seat W	30.0	arm H	24.0	depth	26.25
total H	24.0	total W	34.25					

For KYDEX® flat arms add suffix K and \$256
Exceeds BIFMA Seating Durability Test to 750 lbs per bench
CAL 133, add \$71 List per bench



6201BG
30 lbs

Bariatric Two Seater Bench

SIN 711-17

COM 3.0 yds
1.5 yd COM per single seat

MODEL	COM	GR 1	GR 2	GR 3	GR 4	GR 5	GR 6
6222BG	1822	1948	1990	2076	2202	2299	2478

Arms between and at ends (WF/WR or PF/PR)

Dimensions (inches)

	seat H	18.0	seat W	30.0	arm H	24.0	depth	26.25
total H	24.0	total W	66.0					

For KYDEX® flat arms add suffix K and \$384
Exceeds BIFMA Seating Durability Test to 1000 lbs per two seat bench
CAL 133, add \$142 List per two seat bench



6222BG
50 lbs



COOPER COLLECTION - BALA Lounge Seating

Designed for today's healthcare facilities

Freestanding Lounge Tables – Corner and Spacer Connecting Tables

Standard Features

- Tops in laminate or veneer
- Select laminate tops from 15 standard laminates or choose any standard Wilsonart, Nevamar, Formica, Arborite and Pionite matte finish laminates at no upcharge.
- Freestanding lounge tables available with PVC Flat (PVF), 2mm (2MM) or hardwood (HB) edge
- Connecting table tops available with PVC Flat (PVF) edge, Self edge (SE) or hardwood (HB) edge
- 9 standard veneer and hardwood edge stains. Stain-to-match available at no upcharge.
- Beech legs and Beech table skirts stained the same
- Tops utilize Nu Green earth friendly core
- Threaded replaceable glides
- 18" height

Options

- Non-standard laminates, contact Spec for pricing
- 3" clear Cooper Leg Guard, add \$11 List/leg
- Custom size spacer tables for restricted spaces
- Other sizes may be available

Radius Corner Tables are recommended for open areas



Freestanding Lounge Tables

Model	Laminate PVF/SE/2MM	Laminate HB Edge	Veneer HB Edge	Weight	Cu.Ft.
62 - 24 x 24 SQ	759	941	1085	47	7.2
62 - 24 x 48 RE	910	1110	1313	64	18
62 - 30 x 30 SQ	859	991	1146	57	13.5
62 - 22 DIA	904	1240	1431	47	7.2



Corner and Spacer Connecting Tables

Model	Laminate PVF/SE	Laminate HB Edge	Veneer HB Edge	Weight	Cu.Ft.
62RC - 28 x 28 <i>Radius Corner Table</i>	777	1042	1221	42	2
62SC - 28 x 28 <i>Square Corner Table</i>	849	1031	1137	46	2
62TC - 45 degree <i>Corner Table</i>	777	1042	1221	40	2
62ST - 21 x 24 <i>Spacer Table</i>	527	744	852	27	2
62ET - 21 x 24 <i>End Table</i>	704	920	1030	37	2

