

# CALVIN Public Seating

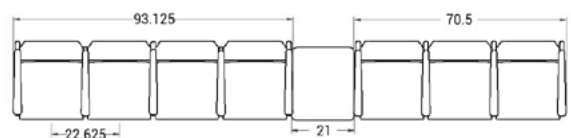
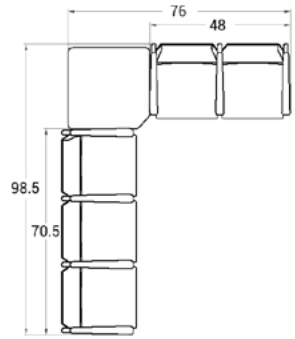
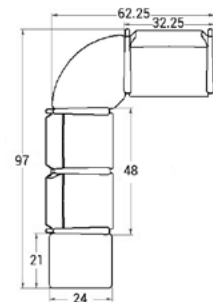
## LAYOUTS



### Description

- Spec's Calvin offers an oval steel frame with either wood or aluminum side rails.
  - Your layout possibilities are unlimited with spacer, radius and corner tables for both standard and bariatric seating in virtually any combination.
  - Bariatric seating is a 30" wide seat and is load tested to 750 lbs. Cannot be connected to other bariatric seats.
  - 21" seat width is standard.
  - Choice of wood or polyurethane arms.
  - Wood and polyurethane arms are replaceable in the field.
  - Two and three seat models offer a choice of no center arms or half arms between seats.
  - Glides and separate seat and back are standard.
  - Foam formulated to meet California Bulletin 133 standards is available.
  - Please send a drawing of the configuration you require with your order.
- Ships assembled as one, two and three seater units.
- For fabrics you wish railroaded or repeats larger than 5" x 5", please contact the factory with repeat information and yardage requirement will be provided.

### LAYOUTS AND DIMENSIONS

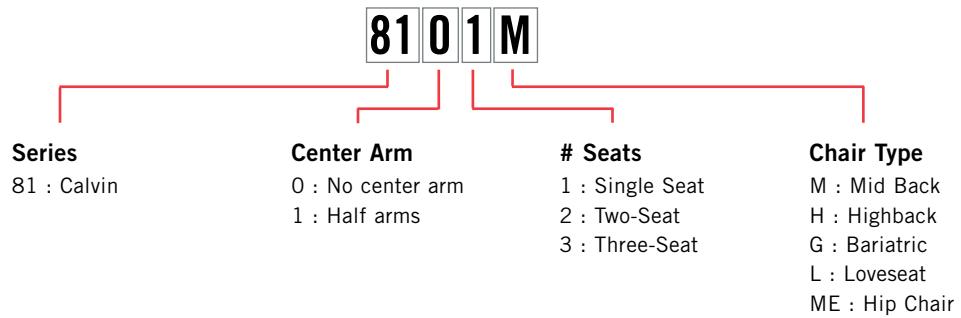


# CALVIN Public Seating



PLACING AN ORDER IS EASY

**PRODUCT CODE**



**OPTIONS**

**SIDE RAIL**



Wood



Aluminium

**ARMS**



Wood



Polyurethane

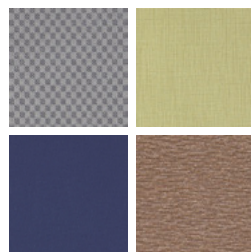
**FINISHES**

**FRAME**



Select from one of our 76 standard Spectone colors

**FABRIC**



Select fabrics from one of our textile partners

**ARMS**



Taupe      Wood\*

\*Wood arms are available in 9 standard stains or stain-to-match at no upcharge.



# CALVIN Public Seating

Single Seater with arms

## Standard Features

- Separate seat and back
- Polyurethane arms or wood arms
- Arms are field replaceable
- Wall-saving, 14 gauge oval tube frame
- Frame in any Spectone color
- Velcro removable back covers, replaceable seat
- Used in connected layouts at no upcharge
- Glides
- Ships assembled as 1, 2 or 3 seaters
- Ships 1/carton 15 cu ft

**Contact Spec™ Customer Service to railroad fabrics (specify repeat info and yardage requirement will be provided) and for repeats greater than 5" x 5"**

## Options

- Choose aluminum (A) or wood (W) side frame. Aluminum side frame available in any Spectone color.
- For wood (W) side frame, specify and add \$106 list. Available in any of 9 standard stains or stain-to-match at no upcharge
- Polyurethane arms available in Black, Sterling Grey or Taupe (RAL 7006)
- Wood arms in Beech are available in any of 9 standard stains or stain-to-match at no upcharge
- Connected and freestanding tables
- Antibacterial and antimicrobial fabrics available
- Different fabric on seat and back at no upcharge
- CAL 133



## Single Seater with arms

COM 1.75 yds  
 0.75 yd COM per single seat  
 1.0 yd COM per single back

MODEL	COM	GR 1	GR 2	GR 3	GR 4	GR 5	GR 6
<b>8101M</b>	<b>795</b>	<b>880</b>	<b>909</b>	<b>967</b>	<b>1055</b>	<b>1120</b>	<b>1206</b>

Dimensions (inches)

seat H	18.0	seat W	21.0	arm H	25.0
total H	33.75	total W	25.0	depth	26.0

Exceeds BIFMA Seating Durability Test to 500 lbs per chair  
 CAL 133, add \$106 List per chair



**8101M**  
27 lbs

# CALVIN Public Seating

Two and Three Seaters with outside arms

## Standard Features

- Separate seat and back
- Polyurethane arms or wood arms
- Arms are field replaceable
- Wall-saving, 14 gauge oval tube frame
- Frame in any Spectone color
- Velcro removable back covers, replaceable seat
- Used in connected layouts at no upcharge
- Glides
- Ships assembled as 1, 2 or 3 seaters
- Ships 1/carton 15 cu ft

**Contact Spec Customer Service to railroad fabrics (specify repeat info and yardage requirement will be provided) and for repeats greater than 5" x 5"**

## Options

- Choose aluminum (A) or wood (W) side frame. Aluminum side frame available in any Spectone color.
- For wood (W) side frame, specify and add \$106 list. Available in any of 9 standard stains or stain-to-match at no upcharge
- Polyurethane arms available in Black, Sterling Grey or Taupe (RAL 7006)
- Wood arms in Beech are available in any of 9 standard stains or stain-to-match at no upcharge
- Connected and freestanding tables
- Antibacterial and antimicrobial fabrics available
- Different fabric on seat and back at no upcharge
- CAL 133



### Two Seater with outside arms

COM 3.5 yds  
0.75 yd COM per single seat  
1.0 yd COM per single back

MODEL	COM	GR 1	GR 2	GR 3	GR 4	GR 5	GR 6
<b>8102M</b>	<b>1273</b>	<b>1442</b>	<b>1503</b>	<b>1618</b>	<b>1790</b>	<b>1923</b>	<b>2095</b>

Dimensions (inches)

seat H	18.0	seat W	21.0	arm H	25.0
total H	33.75	total W	44.75	depth	26.0

Exceeds BIFMA Seating Durability Test to 750 lbs per two seater  
CAL 133, add \$212 List per two seater



**8102M**  
51 lbs

### Three Seater with outside arms

COM 5.25 yds  
0.75 yd COM per single seat  
1.0 yd COM per single back

MODEL	COM	GR 1	GR 2	GR 3	GR 4	GR 5	GR 6
<b>8103M</b>	<b>1700</b>	<b>1952</b>	<b>2042</b>	<b>2217</b>	<b>2476</b>	<b>2673</b>	<b>2932</b>

Dimensions (inches)

seat H	18.0	seat W	21.0	arm H	25.0
total H	33.75	total W	67.5	depth	26.0

Exceeds BIFMA Seating Durability Test to 1000 lbs per three seater  
CAL 133, add \$318 List per three seater



**8103M**  
75 lbs

# CALVIN Public Seating

Two and Three Seaters with half arms

## Standard Features

- Separate seat and back
- Polyurethane arms or wood arms
- Arms are field replaceable
- Wall-saving, 14 gauge oval tube frame
- Frame in any Spectone color
- Velcro removable back covers, replaceable seat
- Used in connected layouts at no upcharge
- Glides
- Ships assembled as 1, 2 or 3 seaters
- Ships 1/carton 15 cu ft

**Contact Spec Customer Service to railroad fabrics (specify repeat info and yardage requirement will be provided) and for repeats greater than 5" x 5"**

## Options

- Choose aluminum (A) or wood (W) side frame. Aluminum side frame available in any Spectone color.
- For wood (W) side frame, specify and add \$106 list. Available in any of 9 standard stains or stain-to-match at no upcharge
- Polyurethane arms available in Black, Sterling Grey or Taupe (RAL 7006)
- Wood arms in Beech are available in any of 9 standard stains or stain-to-match at no upcharge
- Connected and freestanding tables
- Antibacterial and antimicrobial fabrics available
- Different fabric on seat and back at no upcharge
- CAL 133



### Two Seater with half arms

COM 3.5 yds  
0.75 yd COM per single seat  
1.0 yd COM per single back

MODEL	COM	GR 1	GR 2	GR 3	GR 4	GR 5	GR 6
<b>8112M</b>	<b>1428</b>	<b>1597</b>	<b>1657</b>	<b>1773</b>	<b>1945</b>	<b>2078</b>	<b>2250</b>

Dimensions (inches)

	seat H	18.0	seat W	21.0	arm H	25.0
total H	33.75	total W	48.0	depth	26.0	

Exceeds BIFMA Seating Durability Test to 750 lbs per two seater  
CAL 133, add \$212 List per two seater



**8112M**  
51 lbs

### Three Seater with half arms

COM 5.25 yds  
0.75 yd COM per single seat  
1.0 yd COM per single back

MODEL	COM	GR 1	GR 2	GR 3	GR 4	GR 5	GR 6
<b>8113M</b>	<b>1984</b>	<b>2237</b>	<b>2326</b>	<b>2502</b>	<b>2761</b>	<b>2956</b>	<b>3216</b>

Dimensions (inches)

	seat H	18.0	seat W	21.0	arm H	25.0
total H	33.75	total W	70.5	depth	26.0	

Exceeds BIFMA Seating Durability Test to 1000 lbs per two seater  
CAL 133, add \$318 List per three seater



**8113M**  
75 lbs



# CALVIN Public Seating

Loveseat with arms

## Standard Features

- Separate seat and back
- Polyurethane arms or wood arms
- Arms are field replaceable
- Wall-saving, 14 gauge oval tube frame
- Frame in any Spectone color
- Velcro removable back covers, replaceable seat
- Used in connected layouts at no upcharge
- Glides
- Ships assembled as 1, 2 or 3 seaters
- Ships 1/carton 15 cu ft

**Contact Spec Customer Service to railroad fabrics (specify repeat info and yardage requirement will be provided) and for repeats greater than 5" x 5"**

## Options

- Choose aluminum (A) or wood (W) side frame. Aluminum side frame available in any Spectone color.
- For wood (W) side frame, specify and add \$106 list. Available in any of 9 standard stains or stain-to-match at no upcharge
- Polyurethane arms available in Black, Sterling Grey or Taupe (RAL 7006)
- Wood arms in Beech are available in any of 9 standard stains or stain-to-match at no upcharge
- Connected and freestanding tables
- Antibacterial and antimicrobial fabrics available
- Different fabric on seat and back at no upcharge
- CAL 133



## Loveseat with arms

COM 3.5 yds  
 1.75 yd COM per single seat  
 1.75 yd COM per single back

MODEL	COM	GR 1	GR 2	GR 3	GR 4	GR 5	GR 6
<b>8101L</b>	<b>1200</b>	<b>1370</b>	<b>1430</b>	<b>1545</b>	<b>1718</b>	<b>1850</b>	<b>2023</b>

Dimensions (inches)

seat H	18.0	seat W	42.0	arm H	25.0
total H	33.75	total W	46.0	depth	26.0

Exceeds BIFMA Seating Durability Test to 750 lbs per chair  
 CAL 133, add \$160 List per chair



**8101L**  
51 lbs



# CALVIN Public Seating

## Bariatric Single Seater with arms

### Standard Features

- Separate seat and back
- Polyurethane arms or wood arms
- Arms are field replaceable
- Wall-saving, 14 gauge oval tube frame
- Frame in any Spectone color
- Velcro removable back covers, replaceable seat
- Used in connected layouts at no upcharge
- Glides
- Ships assembled as 1, 2 or 3 seaters
- Ships 1/carton 15 cu ft

**Contact Spec Customer Service to railroad fabrics (specify repeat info and yardage requirement will be provided) and for repeats greater than 5" x 5"**

### Options

- Choose aluminum (A) or wood (W) side frame. Aluminum side frame available in any Spectone color.
- For wood (W) side frame, specify and add \$106 list. Available in any of 9 standard stains or stain-to-match at no upcharge
- Polyurethane arms available in Black, Sterling Grey or Taupe (RAL 7006)
- Wood arms in Beech are available in any of 9 standard stains or stain-to-match at no upcharge
- Connected and freestanding tables
- Antibacterial and antimicrobial fabrics available
- Different fabric on seat and back at no upcharge
- CAL 133



### Bariatric Single Seater with arms

COM 3.0 yds  
 1.5 yd COM per single seat  
 1.5 yd COM per single back

MODEL	COM	GR 1	GR 2	GR 3	GR 4	GR 5	GR 6
<b>8101G</b>	<b>966</b>	<b>1111</b>	<b>1163</b>	<b>1263</b>	<b>1410</b>	<b>1522</b>	<b>1671</b>

Dimensions (inches)

seat H	18.0	seat W	30.0	arm H	25.0
total H	33.75	total W	34.0	depth	26.0

Exceeds BIFMA Seating Durability Test to 750 lbs per chair  
 CAL 133, add \$128 List per chair



**8101G**  
34 lbs



# CALVIN Public Seating

## Highback Single Seater with arms

### Standard Features

- Separate seat and back
- Polyurethane arms or wood arms
- Arms are field replaceable
- Wall-saving, 14 gauge oval tube frame
- Frame in any Spectone color
- Velcro removable back covers, replaceable seat
- Used in connected layouts at no upcharge
- Glides
- Ships assembled as 1, 2 or 3 seaters
- Ships 1/carton 15 cu ft

**Contact Spec Customer Service to railroad fabrics (specify repeat info and yardage requirement will be provided) and for repeats greater than 5" x 5"**

### Options

- Choose aluminum (A) or wood (W) side frame. Aluminum side frame available in any Spectone color.
- For wood (W) side frame, specify and add \$106 list. Available in any of 9 standard stains or stain-to-match at no upcharge
- Polyurethane arms available in Black, Sterling Grey or Taupe (RAL 7006)
- Wood arms in Beech are available in any of 9 standard stains or stain-to-match at no upcharge
- Connected and freestanding tables
- Antibacterial and antimicrobial fabrics available
- Different fabric on seat and back at no upcharge
- CAL 133



### Highback Single Seater with arms

COM 2.5 yds  
 0.75 yd COM per single seat  
 1.75 yd COM per single back

MODEL	COM	GR 1	GR 2	GR 3	GR 4	GR 5	GR 6
<b>8101H</b>	<b>858</b>	<b>980</b>	<b>1022</b>	<b>1105</b>	<b>1228</b>	<b>1323</b>	<b>1446</b>

Dimensions (inches)

seat H	18.0	seat W	21.0	arm H	25.0
total H	47.50	total W	25.0	depth	26.0

Exceeds BIFMA Seating Durability Test to 500 lbs per chair  
 CAL 133, add \$116 List per chair



**8101H**  
35 lbs





# CALVIN Public Seating

Easy Access Hip Single Seater with arms

## Standard Features

- Separate seat and back
- Polyurethane arms or wood arms
- Arms are field replaceable
- Wall-saving, 14 gauge oval tube frame
- Frame in any Spectone color
- Velcro removable back covers, replaceable seat
- Used in connected layouts at no upcharge
- Glides
- Ships assembled as 1, 2 or 3 seaters
- Ships 1/carton 15 cu ft

**Contact Spec Customer Service to railroad fabrics (specify repeat info and yardage requirement will be provided) and for repeats greater than 5" x 5"**

## Options

- Choose aluminum (A) or wood (W) side frame. Aluminum side frame available in any Spectone color.
- For wood (W) side frame, specify and add \$106 list. Available in any of 9 standard stains or stain-to-match at no upcharge
- Polyurethane arms available in Black, Sterling Grey or Taupe (RAL 7006)
- Wood arms in Beech are available in any of 9 standard stains or stain-to-match at no upcharge
- Connected and freestanding tables
- Antibacterial and antimicrobial fabrics available
- Different fabric on seat and back at no upcharge
- CAL 133



## Easy Access Hip Single Seater with arms

COM 1.75 yds  
 0.75 yd COM per single seat  
 1.0 yd COM per single back

MODEL	COM	GR 1	GR 2	GR 3	GR 4	GR 5	GR 6
<b>8101ME</b>	<b>881</b>	<b>965</b>	<b>996</b>	<b>1054</b>	<b>1140</b>	<b>1206</b>	<b>1292</b>

Dimensions (inches)

seat H	24.0	seat W	21.0	arm H	31.5
total H	46.0	total W	25.0	depth	26.0

Exceeds BIFMA Seating Durability Test to 500 lbs per chair  
 CAL 133, add \$106 List per chair



**8101ME**  
35 lbs

# CALVIN Public Seating

## Freestanding Lounge Tables – Corner and Spacer Connecting Tables

### Standard Features

- Tops in laminate or veneer
- Select laminate tops from 15 standard laminates or choose any standard Wilsonart, Nevamar, Formica, Arborite and Pionite matte finish laminates at no upcharge.
- Freestanding lounge tables available with PVC Flat (PVF), 2mm (2MM) or hardwood (HB) edge
- Connecting table tops available with PVC Flat (PVF) edge, Self edge (SE) or hardwood (HB) edge
- 9 standard veneer and hardwood edge stains. Stain-to-match available at no upcharge.
- Oval steel table legs available in any Spectone color
- Tops utilize Nu Green earth friendly core
- Threaded replaceable glides
- 18" height

### Options

- Non-standard laminates, contact Spec for pricing
- Custom size spacer tables for restricted spaces
- Other sizes may be available

Radius Corner Tables are recommended for open areas



### Freestanding Lounge Tables

Model	Laminate PVF/SE/2MM	Laminate HB Edge	Veneer HB Edge	Weight	Cu.Ft.
81 - 24 x 24 SQ	<b>519</b>	<b>680</b>	<b>806</b>	47	7.2
81 - 24 x 48 RE	<b>654</b>	<b>827</b>	<b>1004</b>	64	18
81 - 30 x 30 SQ	<b>608</b>	<b>724</b>	<b>860</b>	57	13.5
81 - 22 DIA	<b>667</b>	<b>958</b>	<b>1127</b>	47	7.2



### Corner and Spacer Connecting Tables

Model	Laminate PVF/SE	Laminate HB Edge	Veneer HB Edge	Weight	Cu.Ft.
81RC - 28 x 28 <i>Radius Corner Table</i>	<b>719</b>	<b>993</b>	<b>1164</b>	26	2
81SC - 28 x 28 <i>Square Corner Table</i>	<b>787</b>	<b>955</b>	<b>1054</b>	26	2
81TC - 45 degree <i>Corner Table</i>	<b>719</b>	<b>993</b>	<b>1164</b>	19	2
81ST - 21 x 21 <i>Spacer Table</i>	<b>488</b>	<b>690</b>	<b>790</b>	19	2
81ET - 21 x 21 <i>End Table</i>	<b>652</b>	<b>853</b>	<b>954</b>	19	2

