

CALVIN Public Seating

LAYOUTS

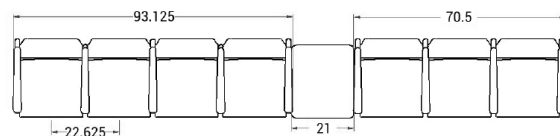
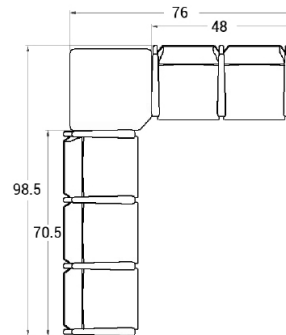
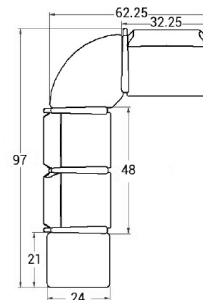


Description

- Spec's Calvin offers an oval steel frame with either wood or aluminum side rails.
- Your layout possibilities are unlimited with spacer, radius and corner tables for both standard and bariatric seating in virtually any combination.
- Bariatric seating is a 30" wide seat and is load tested to 750 lbs. Cannot be connected to other bariatric seats.
- 21" seat width is standard.
- Choice of wood or polyurethane arms.
- Wood and polyurethane arms are replaceable in the field.
- Two and three seat models offer a choice of no center arms or half arms between seats.
- Glides and separate seat and back are standard.
- Foam formulated to meet California Bulletin 133 standards is available.
- Please send a drawing of the configuration you require with your order.
Ships assembled as one, two and three seater units.
- For fabrics you wish railroaded or repeats larger than 5" x 5", please contact the factory with repeat information and yardage requirement will be provided.



LAYOUTS AND DIMENSIONS





CALVIN Public Seating



PLACING AN ORDER IS EASY

PRODUCT CODE

8101M

Series

81 : Calvin

Center Arm

0 : No center arm
1 : Half arms

Seats

1 : Single Seat
2 : Two-Seat
3 : Three-Seat

Chair Type

M : Mid Back
H : Highback
G : Bariatric
L : Loveseat
ME : Hip Chair



OPTIONS

SIDE RAIL



Wood



Aluminium

ARMS



Wood



Polyurethane

FINISHES

FRAME



Select from one of our 76 standard Spectone colors

FABRIC



Select fabrics from one of our textile partners

ARMS



Black

Sterling Grey

Taupe

Wood*

*Wood arms are available in 9 standard stains or stain-to-match at no upcharge.



CALVIN Public Seating

Single Seater with arms

Standard Features

- Separate seat and back
- Polyurethane arms or wood arms
- Arms are field replaceable
- Wall-saving, 14 gauge oval tube frame
- Frame in any Spectone color
- Velcro removable back covers, replaceable seat
- Used in connected layouts at no upcharge
- Glides
- Ships assembled as 1, 2 or 3 seaters
- Ships 1/carton 15 cu ft

Contact Spec Customer Service to railroad fabrics (specify repeat info and yardage requirement will be provided) and for repeats greater than 5" x 5"

Options

- Choose aluminum (A) or wood (W) side frame. Aluminum side frame available in any Spectone color.
- For wood (W) side frame, specify and add \$112 list. Available in any of 9 standard stains or stain-to-match at no upcharge
- Polyurethane arms available in Black, Sterling Grey or Taupe (RAL 7006)
- Wood arms in Beech are available in any of 9 standard stains or stain-to-match at no upcharge
- Connected and freestanding tables
- Antibacterial and antimicrobial fabrics available
- Different fabric on seat and back at no upcharge
- CAL 133



Single Seater with arms

COM 1.75 yds
 0.75 yd COM per single seat
 1.0 yd COM per single back

MODEL	COM	GR 1	GR 2	GR 3	GR 4	GR 5	GR 6
8101M	919	1018	1048	1117	1212	1288	1389

Dimensions (inches)

seat H	18.0	seat W	21.0	arm H	25.0
total H	33.75	total W	25.0	depth	26.0

Exceeds BIFMA Seating Durability Test to 500 lbs per chair
 CAL 133, add \$112 List per chair



8101M
27 lbs



CALVIN Public Seating

Two and Three Seaters with outside arms

Standard Features

- Separate seat and back
- Polyurethane arms or wood arms
- Arms are field replaceable
- Wall-saving, 14 gauge oval tube frame
- Frame in any Spectone color
- Velcro removable back covers, replaceable seat
- Used in connected layouts at no upcharge
- Glides
- Ships assembled as 1, 2 or 3 seaters
- Ships 1/carton 15 cu ft

Options

- Choose aluminum (A) or wood (W) side frame. Aluminum side frame available in any Spectone color.
- For wood (W) side frame, specify and add \$112 list. Available in any of 9 standard stains or stain-to-match at no upcharge
- Polyurethane arms available in Black, Sterling Grey or Taupe (RAL 7006)
- Wood arms in Beech are available in any of 9 standard stains or stain-to-match at no upcharge
- Connected and freestanding tables
- Antibacterial and antimicrobial fabrics available
- Different fabric on seat and back at no upcharge
- CAL 133

Contact Spec Customer Service to railroad fabrics (specify repeat info and yardage requirement will be provided) and for repeats greater than 5" x 5"



Two Seater with outside arms

COM 3.5 yds
0.75 yd COM per single seat
1.0 yd COM per single back

MODEL	COM	GR 1	GR 2	GR 3	GR 4	GR 5	GR 6
8102M	1471	1668	1730	1869	2058	2211	2410

Dimensions (inches)

seat H	18.0	seat W	21.0	arm H	25.0
total H	33.75	total W	44.75	depth	26.0

Exceeds BIFMA Seating Durability Test to 750 lbs per two seater
CAL 133, add \$224 List per two seater



8102M
51 lbs

Three Seater with outside arms

COM 5.25 yds
0.75 yd COM per single seat
1.0 yd COM per single back

MODEL	COM	GR 1	GR 2	GR 3	GR 4	GR 5	GR 6
8103M	1965	2259	2352	2559	2844	3073	3374

Dimensions (inches)

seat H	18.0	seat W	21.0	arm H	25.0
total H	33.75	total W	67.5	depth	26.0

Exceeds BIFMA Seating Durability Test to 1000 lbs per three seater
CAL 133, add \$336 List per three seater



8103M
75 lbs



CALVIN Public Seating

Two and Three Seaters with half arms

Standard Features

- Separate seat and back
- Polyurethane arms or wood arms
- Arms are field replaceable
- Wall-saving, 14 gauge oval tube frame
- Frame in any Spectone color
- Velcro removable back covers, replaceable seat
- Used in connected layouts at no upcharge
- Glides
- Ships assembled as 1, 2 or 3 seaters
- Ships 1/carton 15 cu ft

Contact Spec Customer Service to railroad fabrics (specify repeat info and yardage requirement will be provided) and for repeats greater than 5" x 5"

Options

- Choose aluminum (A) or wood (W) side frame. Aluminum side frame available in any Spectone color.
- For wood (W) side frame, specify and add \$112 list. Available in any of 9 standard stains or stain-to-match at no upcharge
- Polyurethane arms available in Black, Sterling Grey or Taupe (RAL 7006)
- Wood arms in Beech are available in any of 9 standard stains or stain-to-match at no upcharge
- Connected and freestanding tables
- Antibacterial and antimicrobial fabrics available
- Different fabric on seat and back at no upcharge
- CAL 133



Two Seater with half arms

COM 3.5 yds
0.75 yd COM per single seat
1.0 yd COM per single back

MODEL	COM	GR 1	GR 2	GR 3	GR 4	GR 5	GR 6
8112M	1650	1847	1909	2047	2237	2390	2590

Dimensions (inches)

	seat H	18.0	seat W	21.0	arm H	25.0
total H	33.75	total W	48.0	depth	26.0	

Exceeds BIFMA Seating Durability Test to 750 lbs per two seater
CAL 133, add \$224 List per two seater



8112M
51 lbs

Three Seater with half arms

COM 5.25 yds
0.75 yd COM per single seat
1.0 yd COM per single back

MODEL	COM	GR 1	GR 2	GR 3	GR 4	GR 5	GR 6
8113M	2293	2589	2682	2889	3172	3402	3703

Dimensions (inches)

	seat H	18.0	seat W	21.0	arm H	25.0
total H	33.75	total W	70.5	depth	26.0	

Exceeds BIFMA Seating Durability Test to 1000 lbs per two seater
CAL 133, add \$336 List per three seater



8113M
75 lbs



CALVIN Public Seating

Loveseat with arms

Standard Features

- Separate seat and back
- Polyurethane arms or wood arms
- Arms are field replaceable
- Wall-saving, 14 gauge oval tube frame
- Frame in any Spectone color
- Velcro removable back covers, replaceable seat
- Used in connected layouts at no upcharge
- Glides
- Ships assembled as 1, 2 or 3 seaters
- Ships 1/carton 15 cu ft

Contact Spec Customer Service to railroad fabrics (specify repeat info and yardage requirement will be provided) and for repeats greater than 5" x 5"

Options

- Choose aluminum (A) or wood (W) side frame. Aluminum side frame available in any Spectone color.
- For wood (W) side frame, specify and add \$112 list. Available in any of 9 standard stains or stain-to-match at no upcharge
- Polyurethane arms available in Black, Sterling Grey or Taupe (RAL 7006)
- Wood arms in Beech are available in any of 9 standard stains or stain-to-match at no upcharge
- Connected and freestanding tables
- Antibacterial and antimicrobial fabrics available
- Different fabric on seat and back at no upcharge
- CAL 133



Loveseat with arms

COM 3.5 yds
 1.75 yd COM per single seat
 1.75 yd COM per single back

MODEL	COM	GR 1	GR 2	GR 3	GR 4	GR 5	GR 6
8101L	1387	1583	1646	1784	1974	2127	2327

Dimensions (inches)

seat H	18.0	seat W	42.0	arm H	25.0
total H	33.75	total W	46.0	depth	26.0

Exceeds BIFMA Seating Durability Test to 750 lbs per chair
 CAL 133, add \$172 List per chair



8101L
51 lbs



CALVIN Public Seating

Bariatric Single Seater with arms

Standard Features

- Separate seat and back
- Polyurethane arms or wood arms
- Arms are field replaceable
- Wall-saving, 14 gauge oval tube frame
- Frame in any Spectone color
- Velcro removable back covers, replaceable seat
- Used in connected layouts at no upcharge
- Glides
- Ships assembled as 1, 2 or 3 seaters
- Ships 1/carton 15 cu ft

Contact Spec Customer Service to railroad fabrics (specify repeat info and yardage requirement will be provided) and for repeats greater than 5" x 5"

Options

- Choose aluminum (A) or wood (W) side frame. Aluminum side frame available in any Spectone color.
- For wood (W) side frame, specify and add \$112 list. Available in any of 9 standard stains or stain-to-match at no upcharge
- Polyurethane arms available in Black, Sterling Grey or Taupe (RAL 7006)
- Wood arms in Beech are available in any of 9 standard stains or stain-to-match at no upcharge
- Connected and freestanding tables
- Antibacterial and antimicrobial fabrics available
- Different fabric on seat and back at no upcharge
- CAL 133



Bariatric Single Seater with arms

COM 3.0 yds
 1.5 yd COM per single seat
 1.5 yd COM per single back

MODEL	COM	GR 1	GR 2	GR 3	GR 4	GR 5	GR 6
8101G	1117	1286	1339	1458	1620	1751	1923

Dimensions (inches)

seat H	18.0	seat W	30.0	arm H	25.0
total H	33.75	total W	34.0	depth	26.0

Exceeds BIFMA Seating Durability Test to 750 lbs per chair
 CAL 133, add \$140 List per chair



8101G
34 lbs



CALVIN Public Seating

Highback Single Seater with arms

Standard Features

- Separate seat and back
- Polyurethane arms or wood arms
- Arms are field replaceable
- Wall-saving, 14 gauge oval tube frame
- Frame in any Spectone color
- Velcro removable back covers, replaceable seat
- Used in connected layouts at no upcharge
- Glides
- Ships assembled as 1, 2 or 3 seaters
- Ships 1/carton 15 cu ft

Contact Spec Customer Service to railroad fabrics (specify repeat info and yardage requirement will be provided) and for repeats greater than 5" x 5"

Options

- Choose aluminum (A) or wood (W) side frame. Aluminum side frame available in any Spectone color.
- For wood (W) side frame, specify and add \$112 list. Available in any of 9 standard stains or stain-to-match at no upcharge
- Polyurethane arms available in Black, Sterling Grey or Taupe (RAL 7006)
- Wood arms in Beech are available in any of 9 standard stains or stain-to-match at no upcharge
- Connected and freestanding tables
- Antibacterial and antimicrobial fabrics available
- Different fabric on seat and back at no upcharge
- CAL 133



Highback Single Seater with arms

COM 2.5 yds
 0.75 yd COM per single seat
 1.75 yd COM per single back

MODEL	COM	GR 1	GR 2	GR 3	GR 4	GR 5	GR 6
8101H	991	1132	1177	1276	1411	1520	1663

Dimensions (inches)

seat H	18.0	seat W	21.0	arm H	25.0
total H	47.50	total W	25.0	depth	26.0

Exceeds BIFMA Seating Durability Test to 500 lbs per chair
 CAL 133, add \$125 List per chair



8101H
35 lbs



CALVIN Public Seating

Easy Access Hip Single Seater with arms

Standard Features

- Separate seat and back
- Polyurethane arms or wood arms
- Arms are field replaceable
- Wall-saving, 14 gauge oval tube frame
- Frame in any Spectone color
- Velcro removable back covers, replaceable seat
- Used in connected layouts at no upcharge
- Glides
- Ships assembled as 1, 2 or 3 seaters
- Ships 1/carton 15 cu ft

Contact Spec Customer Service to railroad fabrics (specify repeat info and yardage requirement will be provided) and for repeats greater than 5" x 5"

Options

- Choose aluminum (A) or wood (W) side frame. Aluminum side frame available in any Spectone color.
- For wood (W) side frame, specify and add \$112 list. Available in any of 9 standard stains or stain-to-match at no upcharge
- Polyurethane arms available in Black, Sterling Grey or Taupe (RAL 7006)
- Wood arms in Beech are available in any of 9 standard stains or stain-to-match at no upcharge
- Connected and freestanding tables
- Antibacterial and antimicrobial fabrics available
- Different fabric on seat and back at no upcharge
- CAL 133



Easy Access Hip Single Seater with arms

COM 1.75 yds
 0.75 yd COM per single seat
 1.0 yd COM per single back

MODEL	COM	GR 1	GR 2	GR 3	GR 4	GR 5	GR 6
8101ME	1018	1116	1146	1216	1311	1387	1488

Dimensions (inches)

seat H	24.0	seat W	21.0	arm H	31.5
total H	46.0	total W	25.0	depth	26.0

Exceeds BIFMA Seating Durability Test to 500 lbs per chair
 CAL 133, add \$112 List per chair



8101ME
35 lbs

CALVIN Public Seating

Freestanding Lounge Tables – Corner and Spacer Connecting Tables

Standard Features

- Tops in laminate or veneer
- Select laminate tops from 15 standard laminates or choose any standard Wilsonart, Nevamar, Formica, Arborite and Pionite matte finish laminates at no upcharge.
- Freestanding lounge tables available with PVC Flat (PVF), 2mm (2MM) or hardwood (HB) edge
- Connecting table tops available with PVC Flat (PVF) edge, Self edge (SE) or hardwood (HB) edge
- 9 standard veneer and hardwood edge stains. Stain-to-match available at no upcharge.
- Oval steel table legs available in any Spectone color
- Tops utilize Nu Green earth friendly core
- Durable injection molded plastic glides
- 18" height

Options

- Non-standard laminates, contact Spec for pricing
- Custom size spacer tables for restricted spaces
- Other sizes may be available

Radius Corner Tables are recommended for open areas



Freestanding Lounge Tables

Model	Laminate PVF/SE/2MM	Laminate HB Edge	Veneer HB Edge	Weight	Cu.Ft.
81 - 24 x 24 SQ	596	778	922	47	7.2
81 - 24 x 48 RE	747	947	1150	64	18
81 - 30 x 30 SQ	696	828	983	57	13.5
81 - 22 DIA	746	1082	1273	47	7.2



Corner and Spacer Connecting Tables

Model	Laminate PVF/SE	Laminate HB Edge	Veneer HB Edge	Weight	Cu.Ft.
81RC - 28 x 28 <i>Radius Corner Table</i>	777	1042	1221	26	2
81SC - 28 x 28 <i>Square Corner Table</i>	849	1031	1137	26	2
81TC - 45 degree <i>Corner Table</i>	777	1042	1221	19	2
81ST - 21 x 21 <i>Spacer Table</i>	527	744	852	19	2
81ET - 21 x 21 <i>End Table</i>	704	920	1030	19	2

