

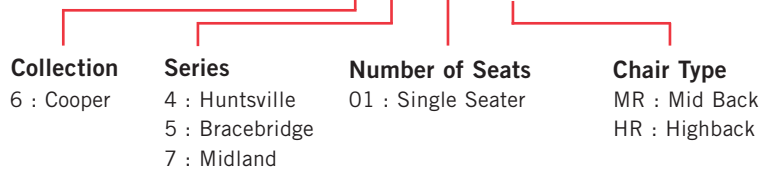
COOPER COLLECTION - COOPER ROCKS Lounge Seating



PLACING AN ORDER IS EASY

PRODUCT CODE

6 4 01 HR



OPTIONS

SERIES



Bracebridge



Huntsville



Midland

BACK OPTIONS



Highback



Mid Back

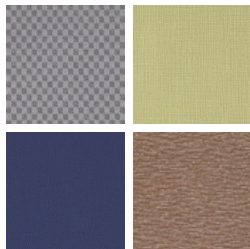
FINISHES

FRAME



Select from one of our 9 standard wood stains or stain-to-match at no upcharge

FABRIC



Select fabrics from one of our textile partners

ARM OPTIONS

Arm options will vary depending on the Series. Please refer to the price list for more information on the Series you would like to specify.

COOPER COLLECTION - COOPER ROCKS

Designed for today's healthcare facilities
Huntsville Medium and Highback with arms

Standard Features

- Separate seat and back
- Built in headrest on highback
- Total range of motion is 2" down and 6" back
- Wood arms
- Wood components in Beech, in any of 9 standard stains or stain-to-match at no upcharge
- Wall-saving frame
- Velcro removable back covers
- Replaceable seats
- Threaded replaceable glides
- Ships assembled
- Ships 1/carton 15 cu ft (medium back), 1/carton 19 cu ft (highback)

Options

- Rounded polyurethane arms, field-replaceable
- Add 2.5" to medium back for overall height of 36.25", add \$46 List/single seat
- Matching ottoman
- Removable headrest
- No headrest
- 3" clear Cooper Leg Guard, add \$10 List/leg
- Antibacterial and antimicrobial fabrics available
- Different fabric on seat and back at no upcharge
- CAL 133

Contact Spec Customer Service to railroad fabrics (specify repeat info and yardage requirement will be provided) and for repeats greater than 5" x 5"



Huntsville Medium back with arms

COM 1.75 yds
0.75 yd COM per single seat
1.0 yd COM per single back

MODEL	COM	GR 1	GR 2	GR 3	GR 4	GR 5	GR 6
6401MR	1335	1410	1434	1483	1558	1614	1686

For polyurethane arms add suffix P and \$124

Dimensions (inches)

	seat H	18.0	seat W	21.0	arm H	25.0
total H	33.75	total W	25.25	depth	27.5	

Exceeds BIFMA Seating Durability Test to 350 lbs per seat
CAL 133, add \$106 List per seat



6401MR
30 lbs

Huntsville Highback with arms

COM 2.5 yds
0.75 yd COM per single seat
1.75 yd COM per single back

MODEL	COM	GR 1	GR 2	GR 3	GR 4	GR 5	GR 6
6401HR	1572	1690	1729	1809	1926	2017	2135

For polyurethane arms add suffix P and \$124

Dimensions (inches)

	seat H	18.0	seat W	21.0	arm H	25.0
total H	47.5	total W	25.5	depth	27.5	

Exceeds BIFMA Seating Durability Test to 350 lbs per seat
CAL 133, add \$116 List per seat



6401HR
35 lbs

COOPER COLLECTION - COOPER ROCKS

Designed for today's healthcare facilities
 Bracebridge Medium and Highback with arms

Standard Features

- Separate seat and back
- Built in headrest on highback
- Total range of motion is 2" down and 6" back
- Wood arms
- Wood components in Beech, in any of 9 standard stains or stain-to-match at no upcharge
- Wall-saving frame
- Velcro removable back covers
- Replaceable seats
- Threaded replaceable glides
- Ships assembled
- Ships 1/carton 15 cu ft (medium back), 1/carton 19 cu ft (highback)

Options

- Rounded polyurethane arms, field-replaceable
- Add 2.5" to medium back for overall height of 36.25", add \$46 List/single seat
- Matching ottoman
- Removable headrest
- No headrest
- 3" clear Cooper Leg Guard, add \$10 List/leg
- Antibacterial and antimicrobial fabrics available
- Different fabric on seat and back at no upcharge
- CAL 133

Contact Spec Customer Service to railroad fabrics (specify repeat info and yardage requirement will be provided) and for repeats greater than 5" x 5"



Bracebridge Medium back with arms

COM 1.75 yds
 0.75 yd COM per single seat
 1.0 yd COM per single back

MODEL	COM	GR 1	GR 2	GR 3	GR 4	GR 5	GR 6
6501MR	1403	1477	1501	1551	1624	1680	1754

For polyurethane arms add suffix P and \$124

Dimensions (inches)

	seat H	18.0	seat W	21.0	arm H	25.0
total H	33.75	total W	25.25	depth	27.5	

Exceeds BIFMA Seating Durability Test to 350 lbs per seat
 CAL 133, add \$106 List per seat



6501MR
30 lbs

Bracebridge Highback with arms

COM 2.5 yds
 0.75 yd COM per single seat
 1.75 yd COM per single back

MODEL	COM	GR 1	GR 2	GR 3	GR 4	GR 5	GR 6
6501HR	1642	1760	1798	1878	1995	2085	2203

For polyurethane arms add suffix P and \$124

Dimensions (inches)

	seat H	18.0	seat W	21.0	arm H	25.0
total H	47.5	total W	25.5	depth	27.5	

Exceeds BIFMA Seating Durability Test to 350 lbs per seat
 CAL 133, add \$116 List per seat



6501HR
35 lbs

COOPER COLLECTION - COOPER ROCKS

Designed for today's healthcare facilities
Midland Medium and Highback with arms

Standard Features

- Separate seat and back
- Built in headrest on highback
- Total range of motion is 2" down and 6" back
- Wood arms
- Wood components in Beech, in any of 9 standard stains or stain-to-match at no upcharge
- Wall-saving frame
- Velcro removable back covers
- Replaceable seats
- Threaded replaceable glides
- Ships assembled
- Ships 1/carton 15 cu ft (medium back), 1/carton 19 cu ft (highback)

Options

- Replaceable polyurethane arm caps
- Add 2.5" to medium back for overall height of 36.25", add \$46 List/single seat
- Matching ottoman
- Removable headrest
- No headrest
- 3" clear Cooper Leg Guard, add \$10 List/leg
- Antibacterial and antimicrobial fabrics available
- Different fabric on seat and back at no upcharge
- CAL 133

Contact Spec Customer Service to railroad fabrics (specify repeat info and yardage requirement will be provided) and for repeats greater than 5" x 5"



Midland Medium back with arms

COM 1.75 yds
0.75 yd COM per single seat
1.0 yd COM per single back

MODEL	COM	GR 1	GR 2	GR 3	GR 4	GR 5	GR 6
6701MR	1225	1301	1325	1373	1447	1504	1577

For polyurethane arm caps add suffix P and \$90

Dimensions (inches)

	seat H	18.0	seat W	21.0	arm H	25.0
total H	33.75		total W	25.5	depth	27.5

Exceeds BIFMA Seating Durability Test to 350 lbs per seat
CAL 133, add \$106 List per seat



6701MR
30 lbs

Midland Highback with arms

COM 2.5 yds
0.75 yd COM per single seat
1.75 yd COM per single back

MODEL	COM	GR 1	GR 2	GR 3	GR 4	GR 5	GR 6
6701HR	1479	1604	1644	1726	1849	1942	2066

For polyurethane arm caps add suffix P and \$90

Dimensions (inches)

	seat H	18.0	seat W	21.0	arm H	25.0
total H	47.5		total W	25.5	depth	27.5

Exceeds BIFMA Seating Durability Test to 350 lbs per seat
CAL 133, add \$116 List per seat



6701HR
35 lbs