

DANI TABLES



PLACING AN ORDER IS EASY

PRODUCT CODE

2430 RE DANI O

Size
Width x Length

Top Shape
D : Round
SQ : Square
RE : Rectangle

Series
Dani

Base
N/A : Round Post Leg
O : Oval Post Leg
OM : O with Magazine Shelf



OPTIONS

ROUND LEG



OVAL LEG

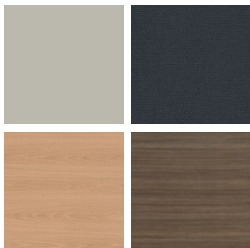


MAGAZINE SHELF



FINISHES

LAMINATE



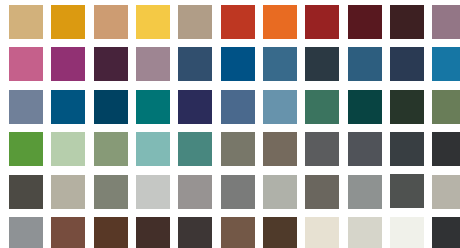
Select from 15 standard laminates or choose any standard Wilsonart, Nevamar, Formica, Arborite and Pionite matte finish laminates at no upcharge

VENEER



Select from one of our 9 standard wood stains or stain-to-match at no upcharge

BASE



Select from one of our 76 standard Spectone colors

EDGE



Check out our website for a complete list of edge profiles.



DANI TABLES

OCCASIONAL AND LOUNGE

MODEL	BASES		TOP SPECIFICATIONS						OPTIONS	LBS
	Code	Qty.	For Laminate Top			For Veneer Top				
			SE PVF 2MM	HF HB	HBV HBVR HBG	HF2 HB2 HKN4 HKNR4 HBG2	HF HB HBV HBVR HBG	HF2 HB2 HKN4 HKNR4 HBG2		
<i>Round</i>										
18D	DANI18	1	464	811	846	948	1002	1107		20
	DANI018	1	571	918	953	1055	1109	1214		20
	DANIOM18	1	718	1412	1482	1686	1794	2004		30
24D	DANI18	1	475	811	846	948	1002	1107		27
	DANI018	1	582	918	953	1055	1109	1214		27
	DANIOM18	1	740	1412	1482	1686	1794	2004		37
30D	DANI18	1	572	903	948	1151	1099	1253		37
	DANI018	1	679	1010	1055	1258	1206	1360		37
	DANIOM18	1	934	1596	1686	2092	1988	2296		47
36D	DANI18	1	664	1144	1228	1394	1445	1658		48
	DANI018	1	771	1251	1335	1501	1552	1765		48
	DANIOM18	1	1118	2078	2246	2578	2680	3106		58
42D	DANI18	1	930	1468	1584	1831	1856	2148		62
	DANI018	1	1037	1575	1691	1938	1963	2255		62
	DANIOM18	1	1650	2726	2958	3452	3502	4086		72



18D-DANI

STANDARD FEATURES

- Select from 15 standard laminates or choose any standard Wilsonart, Nevamar, Formica, Arborite and Pionite matte finish laminates at no upcharge. For other laminate please contact the factory for pricing.
- 9 standard veneer and hardwood edge stains. Stain-to-match available at no upcharge.
- Bases available in any Spectone color.
- Standard table height 18".
- All bases are standard with floor leveling glides.

OPTIONS

- Custom heights available.

HOW TO ORDER

1. Select Model
2. Select Base
3. Select Edge Style
4. Select Top Finish
5. Select Edge Finish
6. Select Base Finish

Example: 18D - DANI - PVF
 MODEL | BASE | EDGE



DANI TABLES

OCCASIONAL AND LOUNGE

MODEL	BASES		TOP SPECIFICATIONS						OPTIONS	LBS
	Code	Qty.	For Laminate Top			For Veneer Top				
			SE PVF 2MM	HF HB	HBV HBVR HBG	HF2 HB2 HKN4 HKNR4 HBG2	HF HB HBV HBVR HBG	HF2 HB2 HKN4 HKNR4 HBG2		
<i>Square</i>										
18 x 18SQ	DANI18	1	493	686	721	784	830	987		20
	DANI018	1	600	793	828	891	937	1094		20
	DANIOM18	1	776	1162	1232	1358	1450	1764		30
24 x 24SQ	DANI18	1	504	686	721	784	830	987		27
	DANI018	1	611	793	828	891	937	1094		27
	DANIOM18	1	798	1162	1232	1358	1450	1764		37
30 x 30SQ	DANI18	1	604	736	784	952	891	1107		37
	DANI018	1	711	843	891	1059	998	1214		37
	DANIOM18	1	998	1262	1358	1694	1572	2004		47
36 x 36SQ	DANI18	1	682	890	948	1144	1151	1338		48
	DANI018	1	789	997	1055	1251	1258	1445		48
	DANIOM18	1	1154	1570	1686	2078	2092	2466		58
<i>Rectangle</i>										
24 x 36RE	DANI18	1	593	717	762	826	876	998		36
	DANI018	1	700	824	869	933	983	1105		36
	DANIOM18	1	976	1224	1314	1442	1542	1786		46



18SQ-DANI



18D-DANIO



2436RE-DANI



2436RE-DANIO

STANDARD FEATURES

- Select from 15 standard laminates or choose any standard Wilsonart, Nevamar, Formica, Arborite and Pionite matte finish laminates at no upcharge. For other laminate please contact the factory for pricing.
- 9 standard veneer and hardwood edge stains. Stain-to-match available at no upcharge.
- Bases available in any Spectone color.
- Standard table height 18".
- All bases are standard with floor leveling glides.

OPTIONS

- Custom heights available.

HOW TO ORDER

1. Select Model
2. Select Base
3. Select Edge Style
4. Select Top Finish
5. Select Edge Finish
6. Select Base Finish

Example: 18SQ - DANI - PVF





DANI TABLES

OCCASIONAL AND LOUNGE

MODEL	BASES		TOP SPECIFICATIONS						OPTIONS	LBS
	Code	Qty.	For Laminate Top			For Veneer Top				
			SE PVF 2MM	HF HB	HBV HBVR HBG	HF2 HB2 HKN4 HKNR4 HBG2	HF HB HBV HBVR HBG	HF2 HB2 HKN4 HKNR4 HBG2		
<i>Rectangle</i>										
24 x 42RE	DANI18	1	655	855	907	1001	1058	1227		40
	DANIO18	1	762	962	1014	1108	1165	1334		40
	DANIOM18	1	1100	1500	1604	1792	1906	2244		50
24 x 48RE	DANI18	1	655	855	907	1001	1058	1227		44
	DANIO18	1	762	962	1014	1108	1165	1334		44
	DANIOM18	1	1100	1500	1604	1792	1906	2244		54
30 x 36RE	DANI18	1	682	826	877	959	1018	1165		42
	DANIO18	1	789	933	984	1066	1125	1272		42
	DANIOM18	1	1154	1442	1544	1708	1826	2120		52
30 x 42RE	DANI18	1	702	976	1039	1147	1227	1433		47
	DANIO18	1	809	1083	1146	1254	1334	1540		47
	DANIOM18	1	1194	1742	1868	2084	2244	2656		57
30 x 48RE	DANI18	1	702	976	1039	1147	1227	1433		52
	DANIO18	1	809	1083	1146	1254	1334	1540		52
	DANIOM18	1	1194	1742	1868	2084	2244	2656		62



2436RE-DANI



2436RE-DANIO

STANDARD FEATURES

- Select from 15 standard laminates or choose any standard Wilsonart, Nevamar, Formica, Arborite and Pionite matte finish laminates at no upcharge. For other laminate please contact the factory for pricing.
- 9 standard veneer and hardwood edge stains. Stain-to-match available at no upcharge.
- Bases available in any Spectone color.
- Standard table height 18".
- All bases are standard with floor leveling glides.

OPTIONS

- Custom heights available.

HOW TO ORDER

1. Select Model
2. Select Base
3. Select Edge Style
4. Select Top Finish
5. Select Edge Finish
6. Select Base Finish

Example: 2442RE - DANI - PVF

