



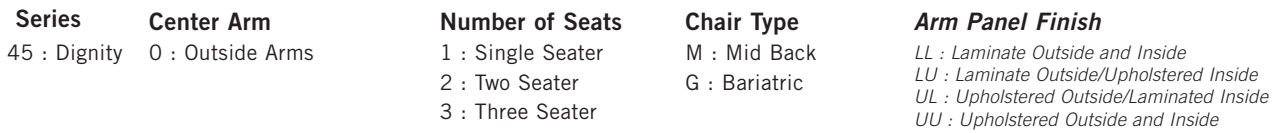
# DIGNITY Behavioral Health Series



PLACING AN ORDER IS EASY

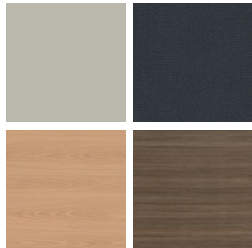
## PRODUCT CODE

**45 0 1 M - LL**



## OPTIONS

### ARM PANEL LAMINATE



Select from 15 standard laminates or choose any standard Wilsonart, Nevamar, Formica, Arborite and Pionite matte finish laminates at no upcharge

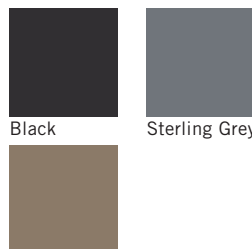
### ARM PANEL FABRIC



Select fabrics from one of our textile partners

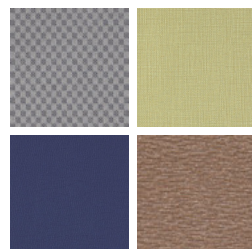
## FINISHES

### FRAME / ARMS



Black      Sterling Grey  
  
Taupe

### FABRIC



Select fabrics from one of our textile partners

# DIGNITY

For warmth, strength and sustainability  
Single Seater with arms

## Standard Features

- Separate seat and back
- Self-skinned polyurethane perimeter arms
- Upholstered side panels can match or contrast seat/back
- Laminate or upholstered side panels on inside and outside of arm
- Select from 15 standard laminates or choose any standard Wilsonart, Nevamar, Formica, Arborite and Pionite matte finish laminates at no upcharge.
- No protruding legs or hardware
- Tamper proof fastenings
- Heavy duty, steel inner frame is 25% recycled steel
- Back frame is FSC certified wood
- Seat and back foam is 25% plant based
- Helps achieve LEED credits
- Non-removable steel levelling glides
- Ships assembled as 1, 2 or 3 seaters
- Ships 1/carton 15 cu ft

Contact Spec Customer Service to railroad fabrics (specify repeat info and yardage requirement will be provided) and for repeats greater than 5" x 5"

## Options

- Specify frame finish, Black (B), Sterling Grey (G) or Taupe RAL 7006 (T)
- Add up to 20 lbs of additional weight, add \$130 List
- Non-standard laminates, contact Spec for pricing
- Environmentally responsible fabrics available
- Antibacterial and antimicrobial fabrics available
- Floor mounting straps available, call Customer Service
- Freestanding tables
- CAL 133



## Single Seater with arms

COM 1.75 yds

0.75 yd COM per single seat / 1.0 yd COM per single back

MODEL	COM	GR 1	GR 2	GR 3	GR 4	GR 5	GR 6
<b>4501M-LL</b>	<b>1198</b>	<b>1284</b>	<b>1313</b>	<b>1371</b>	<b>1457</b>	<b>1522</b>	<b>1609</b>

Arm panel – laminated, outside and inside

CAL 133, add \$106 List per chair

COM 2.75 yds

0.75 yd COM per single seat / 1.0 yd COM per single back / .5 yd COM per panel

MODEL	COM	GR 1	GR 2	GR 3	GR 4	GR 5	GR 6
<b>4501M-LU</b>	<b>1288</b>	<b>1423</b>	<b>1468</b>	<b>1559</b>	<b>1694</b>	<b>1795</b>	<b>1931</b>

Arm panel – laminated, outside, upholstered inside

CAL 133, add \$179 List per chair

COM 2.75 yds

0.75 yd COM per single seat / 1.0 yd COM per single back / .5 yd COM per panel

MODEL	COM	GR 1	GR 2	GR 3	GR 4	GR 5	GR 6
<b>4501M-UL</b>	<b>1288</b>	<b>1423</b>	<b>1468</b>	<b>1559</b>	<b>1694</b>	<b>1795</b>	<b>1931</b>

Arm panel – upholstered outside, laminated inside

CAL 133, add \$179 List per chair

COM 3.75 yds

0.75 yd COM per single seat / 1.0 yd COM per single back / 1.0 yd COM per panel

MODEL	COM	GR 1	GR 2	GR 3	GR 4	GR 5	GR 6
<b>4501M-UU</b>	<b>1375</b>	<b>1563</b>	<b>1622</b>	<b>1746</b>	<b>1930</b>	<b>2069</b>	<b>2255</b>

Arm panel – upholstered, outside and inside

CAL 133, add \$256 List per chair

Dimensions (inches)

seat H	18.0	seat W	23.0	arm H	25.25
total H	32.75	total W	29.0	depth	29.75

Exceeds BIFMA Seating Durability Test to 500 lbs per chair



**4501M**  
95 lbs



# DIGNITY

For warmth, strength and sustainability  
Two Seater with outside arms

## Standard Features

- Separate seat and back
- Self-skinned polyurethane perimeter arms
- Upholstered side panels can match or contrast seat/back
- Laminate or upholstered side panels on inside and outside of arm
- Select from 15 standard laminates or choose any standard Wilsonart, Nevamar, Formica, Arborite and Pionite matte finish laminates at no upcharge.
- No protruding legs or hardware
- Tamper proof fastenings
- Heavy duty, steel inner frame is 25% recycled steel
- Back frame is FSC certified wood
- Seat and back foam is 25% plant based
- Helps achieve LEED credits
- Non-removable steel levelling glides
- Ships assembled as 1, 2 or 3 seaters
- Ships 1/carton 26 cu ft

Contact Spec Customer Service to railroad fabrics (specify repeat info and yardage requirement will be provided) and for repeats greater than 5" x 5"

## Options

- Specify frame finish, Black (B), Sterling Grey (G) or Taupe RAL 7006 (T)
- Add up to 20 lbs of additional weight, add \$130 List
- Non-standard laminates, contact Spec for pricing
- Environmentally responsible fabrics available
- Antibacterial and antimicrobial fabrics available
- Floor mounting straps available, call Customer Service
- Freestanding tables
- CAL 133



## Two Seater with outside arms

COM 3.5 yds

0.75 yd COM per single seat / 1.0 yd COM per single back

MODEL	COM	GR 1	GR 2	GR 3	GR 4	GR 5	GR 6
<b>4502M-LL</b>	<b>1736</b>	<b>1910</b>	<b>1966</b>	<b>2082</b>	<b>2253</b>	<b>2382</b>	<b>2557</b>

Arm panel – laminated, outside and inside

CAL 133, add \$211 List per two seater

COM 4.5 yds

0.75 yd COM per single seat / 1.0 yd COM per single back / .5 yd COM per panel

MODEL	COM	GR 1	GR 2	GR 3	GR 4	GR 5	GR 6
<b>4502M-LU</b>	<b>1824</b>	<b>2048</b>	<b>2122</b>	<b>2269</b>	<b>2490</b>	<b>2657</b>	<b>2880</b>

Arm panel – laminated, outside, upholstered inside

CAL 133, add \$285 List per two seater

COM 4.5 yds

0.75 yd COM per single seat / 1.0 yd COM per single back / .5 yd COM per panel

MODEL	COM	GR 1	GR 2	GR 3	GR 4	GR 5	GR 6
<b>4502M-UL</b>	<b>1824</b>	<b>2048</b>	<b>2122</b>	<b>2269</b>	<b>2490</b>	<b>2657</b>	<b>2880</b>

Arm panel – upholstered outside, laminated inside

CAL 133, add \$285 List per two seater

COM 5.5 yds

0.75 yd COM per single seat / 1.0 yd COM per single back / 1.0 yd COM per panel

MODEL	COM	GR 1	GR 2	GR 3	GR 4	GR 5	GR 6
<b>4502M-UU</b>	<b>1914</b>	<b>2188</b>	<b>2275</b>	<b>2458</b>	<b>2727</b>	<b>2931</b>	<b>3205</b>

Arm panel – upholstered, outside and inside

CAL 133, add \$363 List per two seater

Dimensions (inches)

seat H	18.0	seat W	46.0	arm H	25.25
total H	32.75	total W	52.0	depth	29.75

Exceeds BIFMA Seating Durability Test to 750 lbs per two seater



**4502M**  
150 lbs



# DIGNITY

For warmth, strength and sustainability  
Three Seater with outside arms

## Standard Features

- Separate seat and back
- Self-skinned polyurethane perimeter arms
- Upholstered side panels can match or contrast seat/back
- Laminate or upholstered side panels on inside and outside of arm
- Select from 15 standard laminates or choose any standard Wilsonart, Nevamar, Formica, Arborite and Pionite matte finish laminates at no upcharge.
- No protruding legs or hardware
- Tamper proof fastenings
- Heavy duty, steel inner frame is 25% recycled steel
- Back frame is FSC certified wood
- Seat and back foam is 25% plant based
- Helps achieve LEED credits
- Non-removable steel levelling glides
- Ships assembled as 1, 2 or 3 seaters
- Ships 1/carton 39 cu ft

Contact Spec Customer Service to railroad fabrics (specify repeat info and yardage requirement will be provided) and for repeats greater than 5" x 5"

## Options

- Specify frame finish, Black (B), Sterling Grey (G) or Taupe RAL 7006 (T)
- Add up to 20 lbs of additional weight, add \$130 List
- Non-standard laminates, contact Spec for pricing
- Environmentally responsible fabrics available
- Antibacterial and antimicrobial fabrics available
- Floor mounting straps available, call Customer Service
- Freestanding tables
- CAL 133



## Three Seater with outside arms

COM 5.25 yds

0.75 yd COM per single seat / 1.0 yd COM per single back

MODEL	COM	GR 1	GR 2	GR 3	GR 4	GR 5	GR 6
<b>4503M-LL</b>	<b>2274</b>	<b>2534</b>	<b>2620</b>	<b>2792</b>	<b>3051</b>	<b>3246</b>	<b>3505</b>

Arm panel – laminated, outside and inside

CAL 133, add \$317 List per three seater

COM 6.25 yds

0.75 yd COM per single seat / 1.0 yd COM per single back / .5 yd COM per panel

MODEL	COM	GR 1	GR 2	GR 3	GR 4	GR 5	GR 6
<b>4503M-LU</b>	<b>2363</b>	<b>2674</b>	<b>2776</b>	<b>2982</b>	<b>3288</b>	<b>3518</b>	<b>3829</b>

Arm panel – laminated, outside, upholstered inside

CAL 133, add \$391 List per three seater

COM 6.25 yds

0.75 yd COM per single seat / 1.0 yd COM per single back / .5 yd COM per panel

MODEL	COM	GR 1	GR 2	GR 3	GR 4	GR 5	GR 6
<b>4503M-UL</b>	<b>2363</b>	<b>2674</b>	<b>2776</b>	<b>2982</b>	<b>3288</b>	<b>3518</b>	<b>3829</b>

Arm panel – upholstered outside, laminated inside

CAL 133, add \$391 List per three seater

COM 7.25 yds

0.75 yd COM per single seat / 1.0 yd COM per single back / 1.0 yd COM per panel

MODEL	COM	GR 1	GR 2	GR 3	GR 4	GR 5	GR 6
<b>4503M-UU</b>	<b>2452</b>	<b>2812</b>	<b>2930</b>	<b>3167</b>	<b>3524</b>	<b>3791</b>	<b>4153</b>

Arm panel – upholstered, outside and inside

CAL 133, add \$468 List per three seater

Dimensions (inches)

seat H	18.0	seat W	69.0	arm H	25.25
total H	32.75	total W	75.0	depth	29.75

Exceeds BIFMA Seating Durability Test to 1000 lbs per three seater



**4503M**  
205 lbs

## DIGNITY

For warmth, strength and sustainability  
Bariatric Single Seater with arms

### Standard Features

- Separate seat and back
- Self-skinned polyurethane perimeter arms
- Upholstered side panels can match or contrast seat/back
- Laminate or upholstered side panels on inside and outside of arm
- Select from 15 standard laminates or choose any standard Wilsonart, Nevamar, Formica, Arborite and Pionite matte finish laminates at no upcharge.
- No protruding legs or hardware
- Tamper proof fastenings
- Heavy duty, steel inner frame is 25% recycled steel
- Back frame is FSC certified wood
- Seat and back foam is 25% plant based
- Helps achieve LEED credits
- Non-removable steel levelling glides
- Ships assembled as 1, 2 or 3 seaters
- Ships 1/carton 20 cu ft

Contact Spec Customer Service to railroad fabrics (specify repeat info and yardage requirement will be provided) and for repeats greater than 5" x 5"

### Options

- Specify frame finish, Black (B), Sterling Grey (G) or Taupe RAL 7006 (T)
- Add up to 20 lbs of additional weight, add \$130 List
- Non-standard laminates, contact Spec for pricing
- Environmentally responsible fabrics available
- Antibacterial and antimicrobial fabrics available
- Floor mounting straps available, call Customer Service
- Freestanding tables
- CAL 133

### Bariatric Single Seater with arms

COM 3.25 yds

1.5 yd COM per single seat / 1.75 yd COM per single back

MODEL	COM	GR 1	GR 2	GR 3	GR 4	GR 5	GR 6
<b>4501G-LL</b>	<b>1486</b>	<b>1648</b>	<b>1701</b>	<b>1808</b>	<b>1967</b>	<b>2088</b>	<b>2250</b>

Arm panel – laminated, outside and inside

CAL 133, add \$142 List per chair

COM 4.25 yds

1.5 yd COM per single seat / 1.75 yd COM per single back / .5 yd COM per panel

MODEL	COM	GR 1	GR 2	GR 3	GR 4	GR 5	GR 6
<b>4501G-LU</b>	<b>1575</b>	<b>1787</b>	<b>1855</b>	<b>1995</b>	<b>2204</b>	<b>2361</b>	<b>2573</b>

Arm panel – laminated, outside, upholstered inside

CAL 133, add \$216 List per chair

COM 4.25 yds

1.5 yd COM per single seat / 1.75 yd COM per single back / .5 yd COM per panel

MODEL	COM	GR 1	GR 2	GR 3	GR 4	GR 5	GR 6
<b>4501G-UL</b>	<b>1575</b>	<b>1787</b>	<b>1855</b>	<b>1995</b>	<b>2204</b>	<b>2361</b>	<b>2573</b>

Arm panel – upholstered outside, laminated inside

CAL 133, add \$216 List per chair

COM 5.25 yds

1.5 yd COM per single seat / 1.75 yd COM per single back / 1.0 yd COM per panel

MODEL	COM	GR 1	GR 2	GR 3	GR 4	GR 5	GR 6
<b>4501G-UU</b>	<b>1666</b>	<b>1926</b>	<b>2012</b>	<b>2185</b>	<b>2443</b>	<b>2636</b>	<b>2896</b>

Arm panel – upholstered, outside and inside

CAL 133, add \$290 List per chair

Dimensions (inches)

seat H	18.0	seat W	30.25	arm H	25.25
total H	32.75	total W	36.25	depth	29.75

Exceeds BIFMA Seating Durability Test to 750 lbs per chair



**4501G**  
113 lbs

## DIGNITY

For warmth, strength and sustainability  
Connecting and Freestanding Lounge Tables

### Standard Features

- Tops in laminate or veneer
- Select from 15 standard laminates or choose any standard Wilsonart, Nevamar, Formica, Arborite and Pionite matte finish laminates at no upcharge.
- Laminate tops with PVC Flat (PVF), Self Edge (SE), or hardwood (HB) edge
- 9 standard veneer and hardwood edge stains. Stain-to-match available at no upcharge.
- Heavy duty, fully welded frame is 25% recycled steel
- Tops utilize Nu Green earth friendly core
- 18" height
- Non-removable steel levelling glides

*Radius Corner Tables are recommended for open areas*

### Options

- Specify frame finish, Black (B), Sterling Grey (G) or Taupe RAL 7006 (T)
- Additional weight can be added, contact factory
- Non-standard laminates, contact Spec for pricing
- Floor mounting straps available, call Customer Service

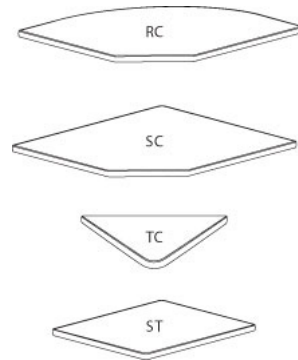
### Freestanding Lounge Tables

Model	Laminate PVF/SE Edge	Laminate HB Edge	Veneer HB Edge	Weight	Cu.Ft.
DIGN - 24 x 24 SQ	<b>1030</b>	<b>1191</b>	<b>1221</b>	57	7.2
DIGN - 30 x 30 SQ	<b>1157</b>	<b>1273</b>	<b>1316</b>	74	13.5
DIGN - 36 x 36 SQ	<b>1263</b>	<b>1445</b>	<b>1494</b>	94	18
DIGN - 42 x 42 SQ	<b>1558</b>	<b>1821</b>	<b>1902</b>	116	24.5
DIGN - 48 x 48 SQ	<b>1658</b>	<b>1889</b>	<b>1976</b>	141	32
DIGN - 24 DIA	<b>1006</b>	<b>1298</b>	<b>1330</b>	45	7.2
DIGN - 30 DIA	<b>1128</b>	<b>1418</b>	<b>1457</b>	57	13.5
DIGN - 36 DIA	<b>1246</b>	<b>1667</b>	<b>1740</b>	71	18
DIGN - 42 DIA	<b>1545</b>	<b>2017</b>	<b>2117</b>	87	24.5
DIGN - 48 DIA	<b>1540</b>	<b>2170</b>	<b>2279</b>	104	32



### Corner and Spacer Connecting Tables

Model	Laminate PVF/SE	Laminate HB Edge	Veneer HB Edge	Weight	Cu.Ft.
DIGNRC - 28 x 28 <i>Radius Corner Table</i>	<b>575</b>	<b>720</b>	<b>891</b>	<b>31</b>	<b>2</b>
DIGNSC - 28 x 28 <i>Square Corner Table</i>	<b>575</b>	<b>691</b>	<b>826</b>	<b>32</b>	<b>2</b>
DIGNTC - 45 degree <i>Corner Table</i>	<b>575</b>	<b>720</b>	<b>891</b>	<b>26</b>	<b>2</b>
DIGNST - 21 x 24 <i>Spacer Table</i>	<b>441</b>	<b>600</b>	<b>728</b>	<b>27</b>	<b>2</b>



# DIGNITY

For warmth, strength and sustainability  
Dolly

## Standard Features

- Black finish only
- 6" soft wheel casters
- Standard Dolly holds 1 single seat chair
- Ships 1/carton, 17 cu. ft.
- Ships fully assembled



## Dignity - Dolly

Description	Model	Price	Weight
Single Seat Dolly	<b>DIGN-99</b>	<b>467</b>	<b>12lb</b>

### Dimensions (inches)

height	39.0
width	23.0
depth	30.0

