

# DIGNITY



PLACING AN ORDER IS EASY

## PRODUCT CODE

45 0 1 M - LL

**Series**  
45 : Dignity

**Center Arm**  
0 : Outside Arms

**Number of Seats**  
1 : Single Seater  
2 : Two Seater  
3 : Three Seater

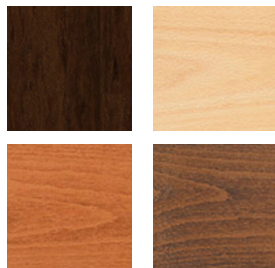
**Chair Type**  
M : Mid Back  
G : Bariatric

**Arm Panel Finish**  
LL : Laminate Outside and Inside  
LU : Laminate Outside/Upholstered Inside  
UL : Upholstered Outside/Laminated Inside  
UU : Upholstered Outside and Inside



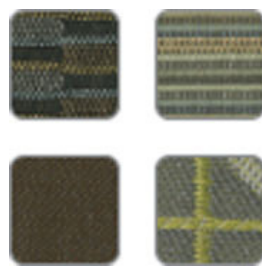
## OPTIONS

### ARM PANEL LAMINATE



Select laminate from our virtually unlimited laminate options

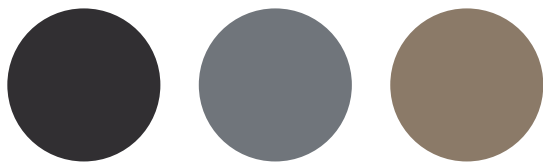
### ARM PANEL FABRIC



Select laminate from our virtually unlimited laminate options

## FINISHES

### FRAME/ARMS



Black

Sterling Grey

Taupe

### FABRIC



Select fabrics from one of our textile partners



# DIGNITY – Behavioral Health Series

For warmth, strength and sustainability  
Single Seater with arms

## Standard Features

- Separate seat and back
- Self-skinned polyurethane perimeter arms
- Upholstered side panels can match or contrast seat/back
- Laminate or upholstered side panels on inside and outside of arm
- Laminate side panels in any standard Arborite, Formica, Nevamar, Pionite or Wilsonart matte finish
- No protruding legs or hardware
- Tamper proof fastenings
- Heavy duty, steel inner frame is 25% recycled steel
- Ships assembled as 1, 2 or 3 seaters
- Ships 1/carton 39 cu ft

## Options

- Specify frame finish, Black (B), Sterling Grey (G) or Taupe RAL 7006 (T)
- Add up to 20 lbs of additional weight, add \$148 List
- Non-standard laminates, contact Spec for pricing
- Environmentally responsible fabrics available
- Antibacterial and antimicrobial fabrics available
- Freestanding tables
- CAL 133

Contact Spec Customer Service to railroad fabrics (specify repeat info and yardage requirement will be provided) and for repeats greater than 5" x 5"



## Single Seater with arms

SIN 711-16

COM 1.75 yds

0.75 yd COM per single seat / 1.0 yd COM per single back

MODEL	COM	GR 1	GR 2	GR 3	GR 4	GR 5	GR 6
<b>4501M-LL</b>	<b>1349</b>	<b>1434</b>	<b>1462</b>	<b>1518</b>	<b>1601</b>	<b>1665</b>	<b>1748</b>

Arm panel – laminated, outside and inside

CAL 133, add \$110 List per chair



**4501M**  
95 lbs

COM 2.75 yds

0.75 yd COM per single seat / 1.0 yd COM per single back / .5 yd COM per panel

MODEL	COM	GR 1	GR 2	GR 3	GR 4	GR 5	GR 6
<b>4501M-LU</b>	<b>1456</b>	<b>1588</b>	<b>1631</b>	<b>1720</b>	<b>1851</b>	<b>1948</b>	<b>2081</b>

Arm panel – laminated, outside, upholstered inside

CAL 133, add \$186 List per chair

COM 2.75 yds

0.75 yd COM per single seat / 1.0 yd COM per single back / .5 yd COM per panel

MODEL	COM	GR 1	GR 2	GR 3	GR 4	GR 5	GR 6
<b>4501M-UL</b>	<b>1456</b>	<b>1588</b>	<b>1631</b>	<b>1720</b>	<b>1851</b>	<b>1948</b>	<b>2081</b>

Arm panel – upholstered outside, laminated inside

CAL 133, add \$186 List per chair

COM 3.75 yds

0.75 yd COM per single seat / 1.0 yd COM per single back / 1.0 yd COM per panel

MODEL	COM	GR 1	GR 2	GR 3	GR 4	GR 5	GR 6
<b>4501M-UU</b>	<b>1562</b>	<b>1743</b>	<b>1801</b>	<b>1922</b>	<b>2099</b>	<b>2235</b>	<b>2414</b>

Arm panel – upholstered, outside and inside

CAL 133, add \$260 List per chair

Dimensions (inches)

seat H	18.0	seat W	23.0	arm H	25.25
total H	32.75	total W	29.0	depth	29.75

Exceeds BIFMA Seating Durability Test to 500 lbs per chair



# DIGNITY – Behavioral Health Series

For warmth, strength and sustainability  
Two Seater with outside arms

## Standard Features

- Separate seat and back
- Self-skinned polyurethane perimeter arms
- Upholstered side panels can match or contrast seat/back
- Laminate or upholstered side panels on inside and outside of arm
- Laminate side panels in any standard Arborite, Formica, Nevamar, Pionite or Wilsonart matte finish
- No protruding legs or hardware
- Tamper proof fastenings
- Heavy duty, steel inner frame is 25% recycled steel
- Ships assembled as 1, 2 or 3 seaters
- Ships 1/carton 39 cu ft

## Options

- Specify frame finish, Black (B), Sterling Grey (G) or Taupe RAL 7006 (T)
- Add up to 20 lbs of additional weight, add \$148 List
- Non-standard laminates, contact Spec for pricing
- Environmentally responsible fabrics available
- Antibacterial and antimicrobial fabrics available
- Freestanding tables
- CAL 133

Contact Spec Customer Service to railroad fabrics (specify repeat info and yardage requirement will be provided) and for repeats greater than 5" x 5"



## Two Seater with outside arms

COM 3.5 yds

0.75 yd COM per single seat / 1.0 yd COM per single back

MODEL	COM	GR 1	GR 2	GR 3	GR 4	GR 5	GR 6
<b>4502M-LL</b>	<b>1982</b>	<b>2150</b>	<b>2205</b>	<b>2317</b>	<b>2484</b>	<b>2609</b>	<b>2777</b>

Arm panel – laminated, outside and inside

CAL 133, add \$220 List per two seater

COM 4.5 yds

0.75 yd COM per single seat / 1.0 yd COM per single back / .5 yd COM per panel

MODEL	COM	GR 1	GR 2	GR 3	GR 4	GR 5	GR 6
<b>4502M-LU</b>	<b>2088</b>	<b>2304</b>	<b>2376</b>	<b>2518</b>	<b>2734</b>	<b>2896</b>	<b>3111</b>

Arm panel – laminated, outside, upholstered inside

CAL 133, add \$296 List per two seater

COM 4.5 yds

0.75 yd COM per single seat / 1.0 yd COM per single back / .5 yd COM per panel

MODEL	COM	GR 1	GR 2	GR 3	GR 4	GR 5	GR 6
<b>4502M-UL</b>	<b>2088</b>	<b>2304</b>	<b>2376</b>	<b>2518</b>	<b>2734</b>	<b>2896</b>	<b>3111</b>

Arm panel – upholstered outside, laminated inside

CAL 133, add \$296 List per two seater

COM 5.5 yds

0.75 yd COM per single seat / 1.0 yd COM per single back / 1.0 yd COM per panel

MODEL	COM	GR 1	GR 2	GR 3	GR 4	GR 5	GR 6
<b>4502M-UU</b>	<b>2194</b>	<b>2459</b>	<b>2545</b>	<b>2721</b>	<b>2982</b>	<b>3180</b>	<b>3447</b>

Arm panel – upholstered, outside and inside

CAL 133, add \$370 List per two seater

Dimensions (inches)

seat H	18.0	seat W	46.0	arm H	25.25
total H	32.75	total W	52.0	depth	29.75

Exceeds BIFMA Seating Durability Test to 750 lbs per two seater

SIN 711-17



**4502M**  
150 lbs

# DIGNITY – Behavioral Health Series

For warmth, strength and sustainability  
Three Seater with outside arms

## Standard Features

- Separate seat and back
- Self-skinned polyurethane perimeter arms
- Upholstered side panels can match or contrast seat/back
- Laminate or upholstered side panels on inside and outside of arm
- Laminate side panels in any standard Arborite, Formica, Nevamar, Pionite or Wilsonart matte finish
- No protruding legs or hardware
- Tamper proof fastenings
- Heavy duty, steel inner frame is 25% recycled steel
- Ships assembled as 1, 2 or 3 seaters
- Ships 1/carton 39 cu ft

## Options

- Specify frame finish, Black (B), Sterling Grey (G) or Taupe RAL 7006 (T)
- Add up to 20 lbs of additional weight, add \$148 List
- Non-standard laminates, contact Spec for pricing
- Environmentally responsible fabrics available
- Antibacterial and antimicrobial fabrics available
- Freestanding tables
- CAL 133

Contact Spec Customer Service to railroad fabrics (specify repeat info and yardage requirement will be provided) and for repeats greater than 5" x 5"

SIN 711-17

## Three Seater with outside arms

COM 5.25 yds  
0.75 yd COM per single seat / 1.0 yd COM per single back

MODEL	COM	GR 1	GR 2	GR 3	GR 4	GR 5	GR 6
<b>4503M-LL</b>	<b>2614</b>	<b>2867</b>	<b>2951</b>	<b>3118</b>	<b>3368</b>	<b>3557</b>	<b>3809</b>

Arm panel – laminated, outside and inside  
CAL 133, add \$330 List per three seater

COM 6.25 yds  
0.75 yd COM per single seat / 1.0 yd COM per single back / .5 yd COM per panel

MODEL	COM	GR 1	GR 2	GR 3	GR 4	GR 5	GR 6
<b>4503M-LU</b>	<b>2720</b>	<b>3021</b>	<b>3120</b>	<b>3320</b>	<b>3618</b>	<b>3841</b>	<b>4142</b>

Arm panel – laminated, outside, upholstered inside  
CAL 133, add \$406 List per three seater

COM 6.25 yds  
0.75 yd COM per single seat / 1.0 yd COM per single back / .5 yd COM per panel

MODEL	COM	GR 1	GR 2	GR 3	GR 4	GR 5	GR 6
<b>4503M-UL</b>	<b>2720</b>	<b>3021</b>	<b>3120</b>	<b>3320</b>	<b>3618</b>	<b>3841</b>	<b>4142</b>

Arm panel – upholstered outside, laminated inside  
CAL 133, add \$406 List per three seater

COM 7.25 yds  
0.75 yd COM per single seat / 1.0 yd COM per single back / 1.0 yd COM per panel

MODEL	COM	GR 1	GR 2	GR 3	GR 4	GR 5	GR 6
<b>4503M-UU</b>	<b>2826</b>	<b>3176</b>	<b>3290</b>	<b>3522</b>	<b>3866</b>	<b>4127</b>	<b>4477</b>

Arm panel – upholstered, outside and inside  
CAL 133, add \$480 List per three seater

## Dimensions (inches)

seat H	18.0	seat W	69.0	arm H	25.25
total H	32.75	total W	75.0	depth	29.75

Exceeds BIFMA Seating Durability Test to 1000 lbs per three seater



**4503M**  
205 lbs



## DIGNITY – Behavioral Health Series

For warmth, strength and sustainability  
Bariatric Single Seater with arms

### Standard Features

- Separate seat and back
- Self-skinned polyurethane perimeter arms
- Upholstered side panels can match or contrast seat/back
- Laminate or upholstered side panels on inside and outside of arm
- Laminate side panels in any standard Arborite, Formica, Nevamar, Pionite or Wilsonart matte finish
- No protruding legs or hardware
- Tamper proof fastenings
- Heavy duty, steel inner frame is 25% recycled steel
- Ships assembled as 1, 2 or 3 seaters
- Ships 1/carton 39 cu ft

### Options

- Specify frame finish, Black (B), Sterling Grey (G) or Taupe RAL 7006 (T)
- Add up to 20 lbs of additional weight, add \$148 List
- Non-standard laminates, contact Spec for pricing
- Environmentally responsible fabrics available
- Antibacterial and antimicrobial fabrics available
- Freestanding tables
- CAL 133

Contact Spec Customer Service to railroad fabrics (specify repeat info and yardage requirement will be provided) and for repeats greater than 5" x 5"



### Bariatric Single Seater with arms

SIN 711-16

COM 3.25 yds

1.5 yd COM per single seat / 1.75 yd COM per single back

MODEL	COM	GR 1	GR 2	GR 3	GR 4	GR 5	GR 6
<b>4501G-LL</b>	<b>1746</b>	<b>1903</b>	<b>1953</b>	<b>2057</b>	<b>2212</b>	<b>2330</b>	<b>2486</b>

Arm panel – laminated, outside and inside

CAL 133, add \$137 List per chair



**4501G**  
113 lbs

COM 4.25 yds

1.5 yd COM per single seat / 1.75 yd COM per single back / .5 yd COM per panel

MODEL	COM	GR 1	GR 2	GR 3	GR 4	GR 5	GR 6
<b>4501G-LU</b>	<b>1852</b>	<b>2057</b>	<b>2124</b>	<b>2258</b>	<b>2461</b>	<b>2613</b>	<b>2818</b>

Arm panel – laminated, outside, upholstered inside

CAL 133, add \$212 List per chair

COM 4.25 yds

1.5 yd COM per single seat / 1.75 yd COM per single back / .5 yd COM per panel

MODEL	COM	GR 1	GR 2	GR 3	GR 4	GR 5	GR 6
<b>4501G-UL</b>	<b>1852</b>	<b>2057</b>	<b>2124</b>	<b>2258</b>	<b>2461</b>	<b>2613</b>	<b>2818</b>

Arm panel – upholstered outside, laminated inside

CAL 133, add \$212 List per chair

COM 5.25 yds

1.5 yd COM per single seat / 1.75 yd COM per single back / 1.0 yd COM per panel

MODEL	COM	GR 1	GR 2	GR 3	GR 4	GR 5	GR 6
<b>4501G-UU</b>	<b>1959</b>	<b>2211</b>	<b>2294</b>	<b>2461</b>	<b>2712</b>	<b>2901</b>	<b>3154</b>

Arm panel – upholstered, outside and inside

CAL 133, add \$288 List per chair

Dimensions (inches)

seat H	18.0	seat W	30.25	arm H	25.25
total H	32.75	total W	36.25	depth	29.75

Exceeds BIFMA Seating Durability Test to 750 lbs per chair



## DIGNITY – Behavioral Health Series

For warmth, strength and sustainability  
Freestanding Lounge Tables

### Standard Features

- Tops in laminate or veneer
- Laminate tops in any standard Arborite, Formica, Nevamar, Pionite or Wilsonart matte finish
- Laminate tops with PVC or hardwood (HB) edge
- Veneers in Cherry, Mahogany, Maple, Oak, Chocolate, Pecan and Walnut
- Select from 7 standard stains or stain-to-match at no upcharge
- Heavy duty, fully welded frame is 25% recycled steel
- Tops utilize Nu Green earth friendly core
- 18" height

*Radius Corner Tables are recommended for open areas*

### Options

- Specify frame finish, Black (B), Sterling Grey (G) or Taupe RAL 7006 (T)
- Additional weight can be added, contact factory
- Non-standard laminates, contact Spec for pricing
- Self edge available at same cost as PVC edge



### Freestanding Lounge Tables

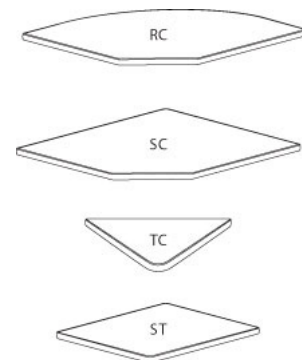
SIN 711-11

Model	Laminate	Laminate	Veneer	Weight	Cu.Ft.
	PVC Edge	HB Edge	HB Edge		
DIGN - 24 x 24 SQ	<b>1118</b>	<b>1297</b>	<b>1331</b>	57	7.2
DIGN - 30 x 30 SQ	<b>1259</b>	<b>1389</b>	<b>1436</b>	74	13.5
DIGN - 36 x 36 SQ	<b>1375</b>	<b>1579</b>	<b>1635</b>	94	18
DIGN - 42 x 42 SQ	<b>1672</b>	<b>1967</b>	<b>2057</b>	116	24.5
DIGN - 48 x 48 SQ	<b>1851</b>	<b>2110</b>	<b>2206</b>	141	32
DIGN - 24 DIA	<b>1090</b>	<b>1419</b>	<b>1454</b>	45	7.2
DIGN - 30 DIA	<b>1228</b>	<b>1552</b>	<b>1596</b>	57	13.5
DIGN - 36 DIA	<b>1357</b>	<b>1828</b>	<b>1909</b>	71	18
DIGN - 42 DIA	<b>1661</b>	<b>2185</b>	<b>2298</b>	87	24.5
DIGN - 48 DIA	<b>1718</b>	<b>2426</b>	<b>2549</b>	104	32



### Corner and Spacer Connecting Tables

Model	Laminate	Laminate	Veneer	Weight	Cu.Ft.
	PVC/Self Edge	HB Edge	HB Edge		
DIGNRC - 28 x 28 <i>Radius Corner Table</i>	<b>644</b>	<b>807</b>	<b>998</b>	31	2
DIGNSC - 28 x 28 <i>Square Corner Table</i>	<b>644</b>	<b>807</b>	<b>998</b>	32	2
DIGNTC - 45 degree <i>Corner Table</i>	<b>644</b>	<b>807</b>	<b>998</b>	26	2
DIGNST - 21 x 24 <i>Spacer Table</i>	<b>496</b>	<b>675</b>	<b>815</b>	27	2





# DIGNITY – Behavioral Health Series

For warmth, strength and sustainability

## Dolly

### Standard Features

- Black finish only
- 6" soft wheel casters
- Standard Dolly holds 1 single seat chair
- Ships 1/carton, 17 cu. ft.
- Ships fully assembled



### Dignity - Dolly

Description	Model	Price	Weight
Single Seat Dolly	<b>DIGN-99</b>	<b>510</b>	12lb

#### Dimensions (inches)

height	39.0
width	23.0
depth	30.0



\*Dolly accommodates Dignity and Dignity2  
Image above shows Dignity2