

DIGNITY



PLACING AN ORDER IS EASY

PRODUCT CODE

45 0 1 M - LL

Series
45 : Dignity

Center Arm
0 : Outside Arms

Number of Seats
1 : Single Seater
2 : Two Seater
3 : Three Seater

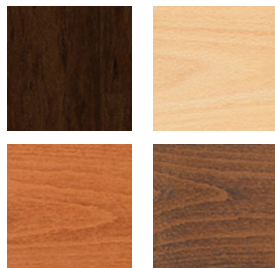
Chair Type
M : Mid Back
G : Bariatric

Arm Panel Finish
LL : Laminate Outside and Inside
LU : Laminate Outside/Upholstered Inside
UL : Upholstered Outside/Laminated Inside
UU : Upholstered Outside and Inside



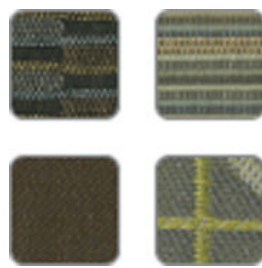
OPTIONS

ARM PANEL LAMINATE



Select laminate from our virtually unlimited laminate options

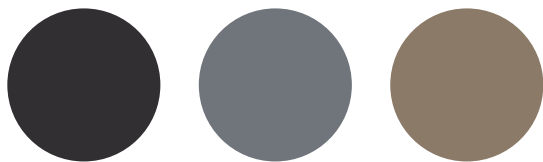
ARM PANEL FABRIC



Select laminate from our virtually unlimited laminate options

FINISHES

FRAME/ARMS



Black

Sterling Grey

Taupe

FABRIC



Select fabrics from one of our textile partners

DIGNITY – Behavioral Health Series

For warmth, strength and sustainability
Single Seater with arms

Standard Features

- Separate seat and back
- Self-skinned polyurethane perimeter arms
- Upholstered side panels can match or contrast seat/back
- Laminate or upholstered side panels on inside and outside of arm
- Laminate side panels in any standard Arborite, Formica, Nevamar, Pionite or Wilsonart matte finish
- No protruding legs or hardware
- Tamper proof fastenings
- Heavy duty, steel inner frame is 25% recycled steel
- Ships assembled as 1, 2 or 3 seaters
- Ships 1/carton 39 cu ft

Options

- Specify frame finish, Black (B), Sterling Grey (G) or Taupe RAL 7006 (T)
- Add up to 20 lbs of additional weight, add \$148 List
- Non-standard laminates, contact Spec for pricing
- Environmentally responsible fabrics available
- Antibacterial and antimicrobial fabrics available
- Freestanding tables
- CAL 133

Contact Spec Customer Service to railroad fabrics (specify repeat info and yardage requirement will be provided) and for repeats greater than 5" x 5"



Single Seater with arms

SIN 711-16

COM 1.75 yds

0.75 yd COM per single seat / 1.0 yd COM per single back

MODEL	COM	GR 1	GR 2	GR 3	GR 4	GR 5	GR 6
4501M-LL	1349	1434	1462	1518	1601	1665	1748

Arm panel – laminated, outside and inside

CAL 133, add \$110 List per chair



4501M
95 lbs

COM 2.75 yds

0.75 yd COM per single seat / 1.0 yd COM per single back / .5 yd COM per panel

MODEL	COM	GR 1	GR 2	GR 3	GR 4	GR 5	GR 6
4501M-LU	1456	1588	1631	1720	1851	1948	2081

Arm panel – laminated, outside, upholstered inside

CAL 133, add \$186 List per chair

COM 2.75 yds

0.75 yd COM per single seat / 1.0 yd COM per single back / .5 yd COM per panel

MODEL	COM	GR 1	GR 2	GR 3	GR 4	GR 5	GR 6
4501M-UL	1456	1588	1631	1720	1851	1948	2081

Arm panel – upholstered outside, laminated inside

CAL 133, add \$186 List per chair

COM 3.75 yds

0.75 yd COM per single seat / 1.0 yd COM per single back / 1.0 yd COM per panel

MODEL	COM	GR 1	GR 2	GR 3	GR 4	GR 5	GR 6
4501M-UU	1562	1743	1801	1922	2099	2235	2414

Arm panel – upholstered, outside and inside

CAL 133, add \$260 List per chair

Dimensions (inches)

seat H	18.0	seat W	23.0	arm H	25.25
total H	32.75	total W	29.0	depth	29.75

Exceeds BIFMA Seating Durability Test to 500 lbs per chair

DIGNITY – Behavioral Health Series

For warmth, strength and sustainability
Two Seater with outside arms

Standard Features

- Separate seat and back
- Self-skinned polyurethane perimeter arms
- Upholstered side panels can match or contrast seat/back
- Laminate or upholstered side panels on inside and outside of arm
- Laminate side panels in any standard Arborite, Formica, Nevamar, Pionite or Wilsonart matte finish
- No protruding legs or hardware
- Tamper proof fastenings
- Heavy duty, steel inner frame is 25% recycled steel
- Ships assembled as 1, 2 or 3 seaters
- Ships 1/carton 39 cu ft

Options

- Specify frame finish, Black (B), Sterling Grey (G) or Taupe RAL 7006 (T)
- Add up to 20 lbs of additional weight, add \$148 List
- Non-standard laminates, contact Spec for pricing
- Environmentally responsible fabrics available
- Antibacterial and antimicrobial fabrics available
- Freestanding tables
- CAL 133

Contact Spec Customer Service to railroad fabrics (specify repeat info and yardage requirement will be provided) and for repeats greater than 5" x 5"



Two Seater with outside arms

COM 3.5 yds
0.75 yd COM per single seat / 1.0 yd COM per single back

MODEL	COM	GR 1	GR 2	GR 3	GR 4	GR 5	GR 6
4502M-LL	1982	2150	2205	2317	2484	2609	2777

Arm panel – laminated, outside and inside
CAL 133, add \$220 List per two seater

COM 4.5 yds
0.75 yd COM per single seat / 1.0 yd COM per single back / .5 yd COM per panel

MODEL	COM	GR 1	GR 2	GR 3	GR 4	GR 5	GR 6
4501M-LU	1456	1588	1631	1720	1851	1948	2081

Arm panel – laminated, outside, upholstered inside
CAL 133, add \$296 List per two seater

COM 4.5 yds
0.75 yd COM per single seat / 1.0 yd COM per single back / .5 yd COM per panel

MODEL	COM	GR 1	GR 2	GR 3	GR 4	GR 5	GR 6
4502M-UL	2088	2304	2376	2518	2734	2896	3111

Arm panel – upholstered outside, laminated inside
CAL 133, add \$296 List per two seater

COM 5.5 yds
0.75 yd COM per single seat / 1.0 yd COM per single back / 1.0 yd COM per panel

MODEL	COM	GR 1	GR 2	GR 3	GR 4	GR 5	GR 6
4502M-UU	2194	2459	2545	2721	2982	3180	3447

Arm panel – upholstered, outside and inside
CAL 133, add \$370 List per two seater

Dimensions (inches)

seat H	18.0	seat W	46.0	arm H	25.25
total H	32.75	total W	52.0	depth	29.75

Exceeds BIFMA Seating Durability Test to 750 lbs per two seater

SIN 711-17



4502M
150 lbs

DIGNITY – Behavioral Health Series

For warmth, strength and sustainability
Three Seater with outside arms

Standard Features

- Separate seat and back
- Self-skinned polyurethane perimeter arms
- Upholstered side panels can match or contrast seat/back
- Laminate or upholstered side panels on inside and outside of arm
- Laminate side panels in any standard Arborite, Formica, Nevamar, Pionite or Wilsonart matte finish
- No protruding legs or hardware
- Tamper proof fastenings
- Heavy duty, steel inner frame is 25% recycled steel
- Ships assembled as 1, 2 or 3 seaters
- Ships 1/carton 39 cu ft

Options

- Specify frame finish, Black (B), Sterling Grey (G) or Taupe RAL 7006 (T)
- Add up to 20 lbs of additional weight, add \$148 List
- Non-standard laminates, contact Spec for pricing
- Environmentally responsible fabrics available
- Antibacterial and antimicrobial fabrics available
- Freestanding tables
- CAL 133

Contact Spec Customer Service to railroad fabrics (specify repeat info and yardage requirement will be provided) and for repeats greater than 5" x 5"

SIN 711-17

Three Seater with outside arms

COM 5.25 yds
0.75 yd COM per single seat / 1.0 yd COM per single back

MODEL	COM	GR 1	GR 2	GR 3	GR 4	GR 5	GR 6
4503M-LL	2614	2867	2951	3118	3368	3557	3809

Arm panel – laminated, outside and inside
CAL 133, add \$330 List per three seater

COM 6.25 yds
0.75 yd COM per single seat / 1.0 yd COM per single back / .5 yd COM per panel

MODEL	COM	GR 1	GR 2	GR 3	GR 4	GR 5	GR 6
4503M-LU	2720	3021	3120	3320	3618	3841	4142

Arm panel – laminated, outside, upholstered inside
CAL 133, add \$406 List per three seater

COM 6.25 yds
0.75 yd COM per single seat / 1.0 yd COM per single back / .5 yd COM per panel

MODEL	COM	GR 1	GR 2	GR 3	GR 4	GR 5	GR 6
4503M-UL	2720	3021	3120	3320	3618	3841	4142

Arm panel – upholstered outside, laminated inside
CAL 133, add \$406 List per three seater

COM 7.25 yds
0.75 yd COM per single seat / 1.0 yd COM per single back / 1.0 yd COM per panel

MODEL	COM	GR 1	GR 2	GR 3	GR 4	GR 5	GR 6
4503M-UU	2826	3176	3290	3522	3866	4127	4477

Arm panel – upholstered, outside and inside
CAL 133, add \$480 List per three seater

Dimensions (inches)

seat H	18.0	seat W	69.0	arm H	25.25
total H	32.75	total W	75.0	depth	29.75

Exceeds BIFMA Seating Durability Test to 1000 lbs per three seater



4503M
205 lbs

DIGNITY – Behavioral Health Series

For warmth, strength and sustainability
Bariatric Single Seater with arms

Standard Features

- Separate seat and back
- Self-skinned polyurethane perimeter arms
- Upholstered side panels can match or contrast seat/back
- Laminate or upholstered side panels on inside and outside of arm
- Laminate side panels in any standard Arborite, Formica, Nevamar, Pionite or Wilsonart matte finish
- No protruding legs or hardware
- Tamper proof fastenings
- Heavy duty, steel inner frame is 25% recycled steel
- Ships assembled as 1, 2 or 3 seaters
- Ships 1/carton 39 cu ft

Options

- Specify frame finish, Black (B), Sterling Grey (G) or Taupe RAL 7006 (T)
- Add up to 20 lbs of additional weight, add \$148 List
- Non-standard laminates, contact Spec for pricing
- Environmentally responsible fabrics available
- Antibacterial and antimicrobial fabrics available
- Freestanding tables
- CAL 133

Contact Spec Customer Service to railroad fabrics (specify repeat info and yardage requirement will be provided) and for repeats greater than 5" x 5"



Bariatric Single Seater with arms

SIN 711-16

COM 3.25 yds

1.5 yd COM per single seat / 1.75 yd COM per single back

MODEL	COM	GR 1	GR 2	GR 3	GR 4	GR 5	GR 6
4501G-LL	1746	1903	1953	2057	2212	2330	2486

Arm panel – laminated, outside and inside

CAL 133, add \$137 List per chair



4501G
113 lbs

COM 4.25 yds

1.5 yd COM per single seat / 1.75 yd COM per single back / .5 yd COM per panel

MODEL	COM	GR 1	GR 2	GR 3	GR 4	GR 5	GR 6
4501G-LU	1852	2057	2124	2258	2461	2613	2818

Arm panel – laminated, outside, upholstered inside

CAL 133, add \$212 List per chair

COM 4.25 yds

1.5 yd COM per single seat / 1.75 yd COM per single back / .5 yd COM per panel

MODEL	COM	GR 1	GR 2	GR 3	GR 4	GR 5	GR 6
4501G-UL	1852	2057	2124	2258	2461	2613	2818

Arm panel – upholstered outside, laminated inside

CAL 133, add \$212 List per chair

COM 5.25 yds

1.5 yd COM per single seat / 1.75 yd COM per single back / 1.0 yd COM per panel

MODEL	COM	GR 1	GR 2	GR 3	GR 4	GR 5	GR 6
4501G-UU	1959	2211	2294	2461	2712	2901	3154

Arm panel – upholstered, outside and inside

CAL 133, add \$288 List per chair

Dimensions (inches)

seat H	18.0	seat W	30.25	arm H	25.25
total H	32.75	total W	36.25	depth	29.75

Exceeds BIFMA Seating Durability Test to 750 lbs per chair

DIGNITY – Behavioral Health Series

For warmth, strength and sustainability
Freestanding Lounge Tables

Standard Features

- Tops in laminate or veneer
- Laminate tops in any standard Arborite, Formica, Nevamar, Pionite or Wilsonart matte finish
- Laminate tops with PVC or hardwood (HB) edge
- Veneers in Cherry, Mahogany, Maple, Oak, Chocolate, Pecan and Walnut
- Select from 7 standard stains or stain-to-match at no upcharge
- Heavy duty, fully welded frame is 25% recycled steel
- Tops utilize Nu Green earth friendly core
- 18" height

Radius Corner Tables are recommended for open areas

Options

- Specify frame finish, Black (B), Sterling Grey (G) or Taupe RAL 7006 (T)
- Additional weight can be added, contact factory
- Non-standard laminates, contact Spec for pricing
- Self edge available at same cost as PVC edge



Freestanding Lounge Tables

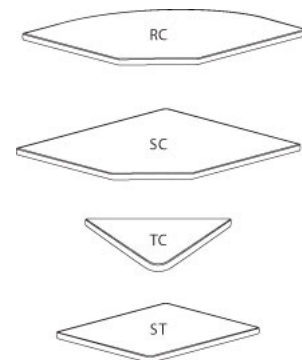
SIN 711-11

Model	Laminate	Laminate	Veneer	Weight	Cu.Ft.
	PVC Edge	HB Edge	HB Edge		
DIGN - 24 x 24 SQ	1118	1297	1331	57	7.2
DIGN - 30 x 30 SQ	1259	1389	1436	74	13.5
DIGN - 36 x 36 SQ	1375	1579	1635	94	18
DIGN - 42 x 42 SQ	1672	1967	2057	116	24.5
DIGN - 48 x 48 SQ	1851	2110	2206	141	32
DIGN - 24 DIA	1090	1419	1454	45	7.2
DIGN - 30 DIA	1228	1552	1596	57	13.5
DIGN - 36 DIA	1357	1828	1909	71	18
DIGN - 42 DIA	1661	2185	2298	87	24.5
DIGN - 48 DIA	1718	2426	2549	104	32



Corner and Spacer Connecting Tables

Model	Laminate	Laminate	Veneer	Weight	Cu.Ft.
	PVC/Self Edge	HB Edge	HB Edge		
DIGNRC - 28 x 28 <i>Radius Corner Table</i>	644	807	998	31	2
DIGNSC - 28 x 28 <i>Square Corner Table</i>	644	807	998	32	2
DIGNTC - 45 degree <i>Corner Table</i>	644	807	998	26	2
DIGNST - 21 x 24 <i>Spacer Table</i>	496	675	815	27	2



DIGNITY – Behavioral Health Series

For warmth, strength and sustainability

Dolly

Standard Features

- Black finish only
- 6" soft wheel casters
- Standard Dolly holds 1 single seat chair
- Ships 1/carton, 17 cu. ft.
- Ships fully assembled



Dignity - Dolly

Description	Model	Price	Weight
Single Seat Dolly	DIGN-99	510	12lb

Dimensions (inches)

height	39.0
width	23.0
depth	30.0



*Dolly accommodates Dignity and Dignity2
Image above shows Dignity2