

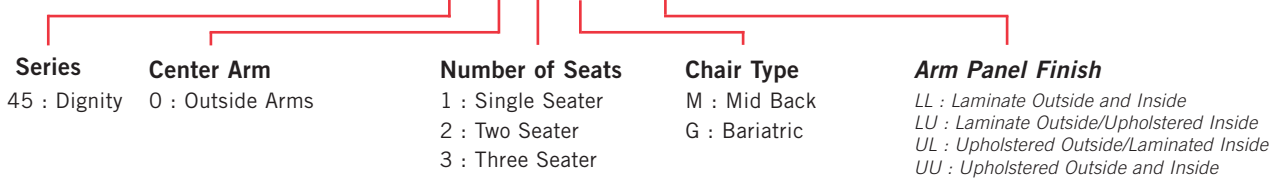
DIGNITY Behavioral Health Series



PLACING AN ORDER IS EASY

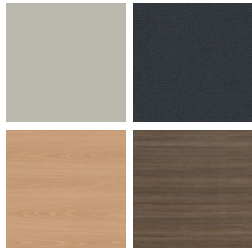
PRODUCT CODE

45 0 1 M - LL



OPTIONS

ARM PANEL LAMINATE



Select from 15 standard laminates or choose any standard Wilsonart, Nevamar, Formica, Arborite and Pionite matte finish laminates at no upcharge

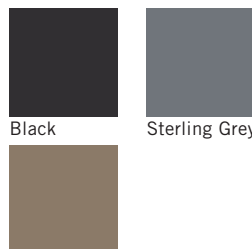
ARM PANEL FABRIC



Select fabrics from one of our textile partners

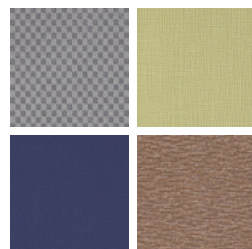
FINISHES

FRAME / ARMS



Black
Sterling Grey
Taupe

FABRIC



Select fabrics from one of our textile partners



DIGNITY Behavioral Health Series

For warmth, strength and sustainability
Single Seater with arms

Standard Features

- Separate seat and back
- Self-skinned polyurethane perimeter arms
- Upholstered side panels can match or contrast seat/back
- Laminate or upholstered side panels on inside and outside of arm
- Select from 15 standard laminates or choose any standard Wilsonart, Nevamar, Formica, Arborite and Pionite matte finish laminates at no upcharge.
- No protruding legs or hardware
- Tamper proof fastenings
- Heavy duty, steel inner frame is 25% recycled steel
- Back frame is FSC certified wood
- Seat and back foam is 25% plant based
- Helps achieve LEED credits
- Non-removable steel levelling glides
- Ships assembled as 1, 2 or 3 seaters
- Ships 1/carton 15 cu ft

Contact Spec™ Customer Service to railroad fabrics (specify repeat info and yardage requirement will be provided) and for repeats greater than 5" x 5"

Options

- Specify frame finish, Black (B), Sterling Grey (G) or Taupe RAL 7006 (T)
- Add up to 20 lbs of additional weight, add \$151 List
- Non-standard laminates, contact Spec for pricing
- Environmentally responsible fabrics available
- Antibacterial and antimicrobial fabrics available
- Floor mounting straps available, call Customer Service
- Connecting and freestanding tables
- CAL 133



Single Seater with arms

COM 1.75 yds

0.75 yd COM per single seat / 1.0 yd COM per single back

MODEL	COM	GR 1	GR 2	GR 3	GR 4	GR 5	GR 6
4501M-LL	1376	1463	1491	1548	1633	1698	1783

Arm panel – laminated, outside and inside
CAL 133, add \$112 List per chair

COM 2.75 yds

0.75 yd COM per single seat / 1.0 yd COM per single back / .5 yd COM per panel

MODEL	COM	GR 1	GR 2	GR 3	GR 4	GR 5	GR 6
4501M-LU	1485	1620	1664	1754	1888	1987	2123

Arm panel – laminated, outside, upholstered inside
CAL 133, add \$190 List per chair

COM 2.75 yds

0.75 yd COM per single seat / 1.0 yd COM per single back / .5 yd COM per panel

MODEL	COM	GR 1	GR 2	GR 3	GR 4	GR 5	GR 6
4501M-UL	1485	1620	1664	1754	1888	1987	2123

Arm panel – upholstered outside, laminated inside
CAL 133, add \$190 List per chair

COM 3.75 yds

0.75 yd COM per single seat / 1.0 yd COM per single back / 1.0 yd COM per panel

MODEL	COM	GR 1	GR 2	GR 3	GR 4	GR 5	GR 6
4501M-UU	1593	1778	1837	1960	2141	2280	2462

Arm panel – upholstered, outside and inside
CAL 133, add \$265 List per chair

Dimensions (inches)

seat H	18.0	seat W	23.0	arm H	25.25
total H	32.75	total W	29.0	depth	29.75

Exceeds BIFMA Seating Durability Test to 500 lbs per chair



4501M
95 lbs



DIGNITY Behavioral Health Series

For warmth, strength and sustainability

Two Seater with outside arms

Standard Features

- Separate seat and back
- Self-skinned polyurethane perimeter arms
- Upholstered side panels can match or contrast seat/back
- Laminate or upholstered side panels on inside and outside of arm
- Select from 15 standard laminates or choose any standard Wilsonart, Nevamar, Formica, Arborite and Pionite matte finish laminates at no upcharge.
- No protruding legs or hardware
- Tamper proof fastenings
- Heavy duty, steel inner frame is 25% recycled steel
- Back frame is FSC certified wood
- Seat and back foam is 25% plant based
- Helps achieve LEED credits
- Non-removable steel levelling glides
- Ships assembled as 1, 2 or 3 seaters
- Ships 1/carton 26 cu ft

Contact Spec Customer Service to railroad fabrics (specify repeat info and yardage requirement will be provided) and for repeats greater than 5" x 5"

Options

- Specify frame finish, Black (B), Sterling Grey (G) or Taupe RAL 7006 (T)
- Add up to 20 lbs of additional weight, add \$151 List
- Non-standard laminates, contact Spec for pricing
- Environmentally responsible fabrics available
- Antibacterial and antimicrobial fabrics available
- Floor mounting straps available, call Customer Service
- Connecting and freestanding tables
- CAL 133



Two Seater with outside arms

COM 3.5 yds

0.75 yd COM per single seat / 1.0 yd COM per single back

MODEL	COM	GR 1	GR 2	GR 3	GR 4	GR 5	GR 6
4502M-LL	2022	2193	2249	2363	2534	2661	2833

Arm panel – laminated, outside and inside

CAL 133, add \$224 List per two seater

COM 4.5 yds

0.75 yd COM per single seat / 1.0 yd COM per single back / .5 yd COM per panel

MODEL	COM	GR 1	GR 2	GR 3	GR 4	GR 5	GR 6
4502M-LU	2130	2350	2424	2568	2789	2954	3173

Arm panel – laminated, outside, upholstered inside

CAL 133, add \$302 List per two seater

COM 4.5 yds

0.75 yd COM per single seat / 1.0 yd COM per single back / .5 yd COM per panel

MODEL	COM	GR 1	GR 2	GR 3	GR 4	GR 5	GR 6
4502M-UL	2130	2350	2424	2568	2789	2954	3173

Arm panel – upholstered outside, laminated inside

CAL 133, add \$302 List per two seater

COM 5.5 yds

0.75 yd COM per single seat / 1.0 yd COM per single back / 1.0 yd COM per panel

MODEL	COM	GR 1	GR 2	GR 3	GR 4	GR 5	GR 6
4502M-UU	2238	2508	2596	2775	3042	3244	3516

Arm panel – upholstered, outside and inside

CAL 133, add \$377 List per two seater

Dimensions (inches)

seat H	18.0	seat W	46.0	arm H	25.25
total H	32.75	total W	52.0	depth	29.75

Exceeds BIFMA Seating Durability Test to 750 lbs per two seater



4502M
150 lbs



DIGNITY Behavioral Health Series

For warmth, strength and sustainability

Three Seater with outside arms

Standard Features

- Separate seat and back
- Self-skinned polyurethane perimeter arms
- Upholstered side panels can match or contrast seat/back
- Laminate or upholstered side panels on inside and outside of arm
- Select from 15 standard laminates or choose any standard Wilsonart, Nevamar, Formica, Arborite and Pionite matte finish laminates at no upcharge.
- No protruding legs or hardware
- Tamper proof fastenings
- Heavy duty, steel inner frame is 25% recycled steel
- Back frame is FSC certified wood
- Seat and back foam is 25% plant based
- Helps achieve LEED credits
- Non-removable steel levelling glides
- Ships assembled as 1, 2 or 3 seaters
- Ships 1/carton 39 cu ft

Contact Spec Customer Service to railroad fabrics (specify repeat info and yardage requirement will be provided) and for repeats greater than 5" x 5"

Options

- Specify frame finish, Black (B), Sterling Grey (G) or Taupe RAL 7006 (T)
- Add up to 20 lbs of additional weight, add \$151 List
- Non-standard laminates, contact Spec for pricing
- Environmentally responsible fabrics available
- Antibacterial and antimicrobial fabrics available
- Floor mounting straps available, call Customer Service
- Connecting and freestanding tables
- CAL 133



Three Seater with outside arms

COM 5.25 yds

0.75 yd COM per single seat / 1.0 yd COM per single back

MODEL	COM	GR 1	GR 2	GR 3	GR 4	GR 5	GR 6
4503M-LL	2666	2924	3010	3180	3435	3628	3885

Arm panel – laminated, outside and inside

CAL 133, add \$337 List per three seater

COM 6.25 yds

0.75 yd COM per single seat / 1.0 yd COM per single back / .5 yd COM per panel

MODEL	COM	GR 1	GR 2	GR 3	GR 4	GR 5	GR 6
4503M-LU	2774	3081	3182	3386	3690	3918	4225

Arm panel – laminated, outside, upholstered inside

CAL 133, add \$414 List per three seater

COM 6.25 yds

0.75 yd COM per single seat / 1.0 yd COM per single back / .5 yd COM per panel

MODEL	COM	GR 1	GR 2	GR 3	GR 4	GR 5	GR 6
4503M-UL	2774	3081	3182	3386	3690	3918	4225

Arm panel – upholstered outside, laminated inside

CAL 133, add \$414 List per three seater

COM 7.25 yds

0.75 yd COM per single seat / 1.0 yd COM per single back / 1.0 yd COM per panel

MODEL	COM	GR 1	GR 2	GR 3	GR 4	GR 5	GR 6
4503M-UU	2883	3240	3356	3592	3943	4210	4567

Arm panel – upholstered, outside and inside

CAL 133, add \$490 List per three seater

Dimensions (inches)

seat H	18.0	seat W	69.0	arm H	25.25
total H	32.75	total W	75.0	depth	29.75

Exceeds BIFMA Seating Durability Test to 1000 lbs per three seater



4503M
205 lbs



DIGNITY Behavioral Health Series

For warmth, strength and sustainability
Bariatric Single Seater with arms

Standard Features

- Separate seat and back
- Self-skinned polyurethane perimeter arms
- Upholstered side panels can match or contrast seat/back
- Laminate or upholstered side panels on inside and outside of arm
- Select from 15 standard laminates or choose any standard Wilsonart, Nevamar, Formica, Arborite and Pionite matte finish laminates at no upcharge.
- No protruding legs or hardware
- Tamper proof fastenings
- Heavy duty, steel inner frame is 25% recycled steel
- Back frame is FSC certified wood
- Seat and back foam is 25% plant based
- Helps achieve LEED credits
- Non-removable steel levelling glides
- Ships assembled as 1, 2 or 3 seaters
- Ships 1/carton 20 cu ft

Contact Spec Customer Service to railroad fabrics (specify repeat info and yardage requirement will be provided) and for repeats greater than 5" x 5"

Options

- Specify frame finish, Black (B), Sterling Grey (G) or Taupe RAL 7006 (T)
- Add up to 20 lbs of additional weight, add \$151 List
- Non-standard laminates, contact Spec for pricing
- Environmentally responsible fabrics available
- Antibacterial and antimicrobial fabrics available
- Floor mounting straps available, call Customer Service
- Connecting and freestanding tables
- CAL 133



Bariatric Single Seater with arms

COM 3.25 yds

1.5 yd COM per single seat / 1.75 yd COM per single back

MODEL	COM	GR 1	GR 2	GR 3	GR 4	GR 5	GR 6
4501G-LL	1781	1941	1992	2098	2256	2377	2536

Arm panel – laminated, outside and inside

CAL 133, add \$140 List per chair

COM 4.25 yds

1.5 yd COM per single seat / 1.75 yd COM per single back / .5 yd COM per panel

MODEL	COM	GR 1	GR 2	GR 3	GR 4	GR 5	GR 6
4501G-LU	1889	2098	2166	2303	2510	2665	2874

Arm panel – laminated, outside, upholstered inside

CAL 133, add \$218 List per chair

COM 4.25 yds

1.5 yd COM per single seat / 1.75 yd COM per single back / .5 yd COM per panel

MODEL	COM	GR 1	GR 2	GR 3	GR 4	GR 5	GR 6
4501G-UL	1889	2098	2166	2303	2510	2665	2874

Arm panel – upholstered outside, laminated inside

CAL 133, add \$218 List per chair

COM 5.25 yds

1.5 yd COM per single seat / 1.75 yd COM per single back / 1.0 yd COM per panel

MODEL	COM	GR 1	GR 2	GR 3	GR 4	GR 5	GR 6
4501G-UU	1998	2255	2340	2510	2766	2959	3217

Arm panel – upholstered, outside and inside

CAL 133, add \$297 List per chair

Dimensions (inches)

seat H	18.0	seat W	30.25	arm H	25.25
total H	32.75	total W	36.25	depth	29.75

Exceeds BIFMA Seating Durability Test to 750 lbs per chair



4501G
113 lbs

DIGNITY Behavioral Health Series

For warmth, strength and sustainability
Connecting and Freestanding Lounge Tables

Standard Features

- Tops in laminate or veneer
- Select from 15 standard laminates or choose any standard Wilsonart, Nevamar, Formica, Arborite and Pionite matte finish laminates at no upcharge.
- Laminate tops with PVC Flat (PVF), Self Edge (SE), or hardwood (HB) edge
- 9 standard veneer and hardwood edge stains. Stain-to-match available at no upcharge.
- Heavy duty, fully welded frame is 25% recycled steel
- Tops utilize Nu Green earth friendly core
- 18" height
- Non-removable steel levelling glides

Radius Corner Tables are recommended for open areas

Options

- Specify frame finish, Black (B), Sterling Grey (G) or Taupe RAL 7006 (T)
- Additional weight can be added, contact factory
- Non-standard laminates, contact Spec for pricing
- Floor mounting straps available, call Customer Service



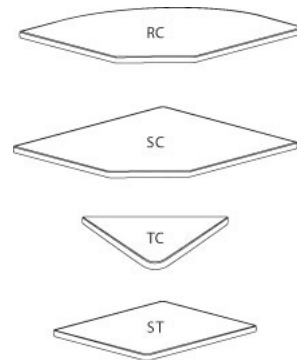
Freestanding Lounge Tables

Model	Laminate PVF/SE Edge	Laminate HB Edge	Veneer HB Edge	Weight	Cu.Ft.
DIGN - 24 x 24 SQ	1140	1323	1358	57	7.2
DIGN - 30 x 30 SQ	1284	1417	1465	74	13.5
DIGN - 36 x 36 SQ	1403	1611	1668	94	18
DIGN - 42 x 42 SQ	1705	2006	2098	116	24.5
DIGN - 48 x 48 SQ	1888	2152	2250	141	32
DIGN - 24 DIA	1112	1447	1483	45	7.2
DIGN - 30 DIA	1253	1583	1628	57	13.5
DIGN - 36 DIA	1384	1865	1947	71	18
DIGN - 42 DIA	1694	2229	2344	87	24.5
DIGN - 48 DIA	1752	2475	2600	104	32



Corner and Spacer Connecting Tables

Model	Laminate PVF/SE	Laminate HB Edge	Veneer HB Edge	Weight	Cu.Ft.
DIGNRC - 28 x 28 <i>Radius Corner Table</i>	657	823	1018	31	2
DIGNSC - 28 x 28 <i>Square Corner Table</i>	657	823	1018	32	2
DIGNTC - 45 degree <i>Corner Table</i>	657	823	1018	26	2
DIGNST - 21 x 24 <i>Spacer Table</i>	506	689	831	27	2





DIGNITY Behavioral Health Series

For warmth, strength and sustainability

Dolly

Standard Features

- Black finish only
- 6" soft wheel casters
- Standard Dolly holds 1 single seat chair
- Ships 1/carton, 17 cu. ft.
- Ships fully assembled



Dignity - Dolly

Description	Model	Price	Weight
Single Seat Dolly	DIGN-99	520	12lb

Dimensions (inches)

height	39.0
width	23.0
depth	30.0

