

ENDZONE BENCHES



PLACING AN ORDER IS EASY

PRODUCT CODE

END B2 - CC - 20

Series	Base	Seat-Table Specification	Depth
EndZone Benches	B2: Two Seats B3: Three Seats B4: Four Seats	<p><i>Two Seat Bench:</i> N/A: No Cushion Seats CC: Two Cushion Seats</p> <p><i>Three Seat Bench:</i> N/A: No Cushion Seats CCC: 3 Cushion Seats TCCT: 2 Cushion Seats Centered CCT: 2 Cushion Seats Left Aligned TCC: 2 Cushion Seats Right Aligned CTC: 1 Cushion Seat On Each End</p>	<p><i>Four Seat Bench:</i> N/A: No Cushion Seats CCCC: 4 Cushion Seats TCCCT: 3 Cushion Seats Centered CCCT: 3 Cushion Seats Left Aligned TCCC: 3 Cushion Seats Right Aligned CTCC: 1 Cushion Seat Left Aligned, 2 Cushion Seats Right Aligned CCTC: 2 Cushion Seats Left Aligned, 1 Cushion Seat Right Aligned</p>
			16: 16" 20: 20"



OPTIONS

RECTANGULAR VERTICAL WIRE MANAGER

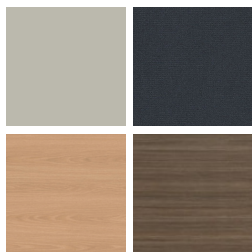


POWER OPTION



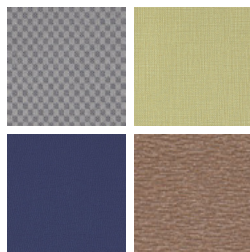
FINISHES

LAMINATE



Select from 15 standard laminates or choose any standard Wilsonart, Nevamar, Formica, Arborite and Pionite matte finish laminates at no upcharge

FABRIC



Select fabrics from one of our textile partners

VERTICAL WIRE MANAGER



Select from one of our 76 standard Spectone colors

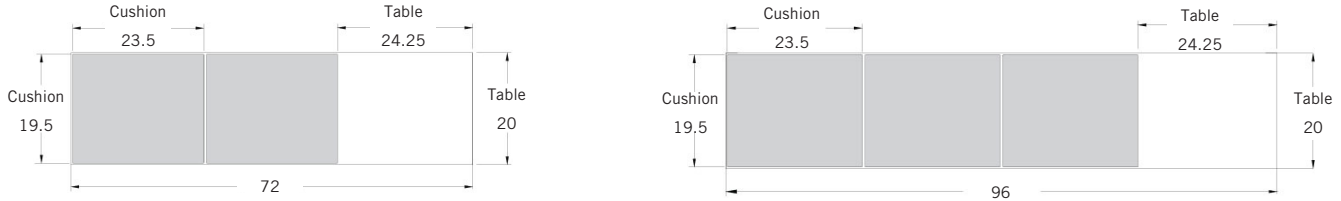
EDGE



2MM
Check out our website for a complete list of edge profiles.

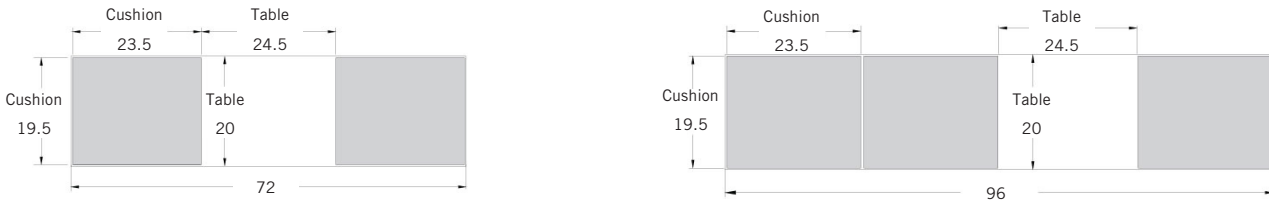
ENDZONE BENCHES DIMENSION OVERVIEW

WHEN TABLE IS AT THE END OF THE BENCH



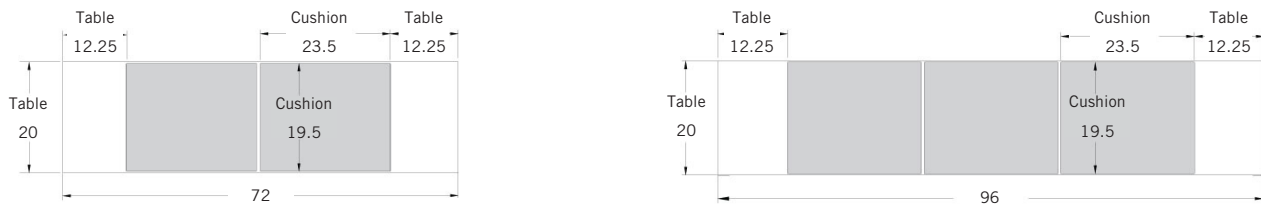
Cushion is recessed 0.25" from the outer edges of the bench. A gap between two adjacent cushions is 0.5". Same table dimensions apply on all benches.

WHEN TABLE IS IN THE MIDDLE OF THE BENCH



Cushion is recessed 0.25" from the outer edges of the bench. A gap between two adjacent cushions is 0.5". Same table dimensions apply on all benches.

WHEN TABLE IS ON EACH END OF THE BENCH



Cushion is recessed 0.25" from the outer edges of the bench. A gap between two adjacent cushions is 0.5". Same table dimensions apply on all benches.



ENDZONE BENCHES

Standard Features

- 2" built up edge
- 2mm Edge (2MM)
- Laminate Top, End Panels, and Support Beam
- Select from 15 standard laminates or choose any standard Wilsonart, Nevamar, Formica, Arborite and Pionite matte finish laminates at no upcharge. For other laminate please contact the factory for pricing.
- Adjustable Glides
- Weight load tested to 250 lbs per seat
- 20" deep

Options

- 2mm Bio edge available in 38 solid colors
- 2mm PVC edge available in wood grain to match 9 standard stains
- For 16" depth add suffix "-16" to product code
- Cove Power Modules can only be specified on the outside of the end panels - see accessories at the end of this section
- Vertical Wire Manager can only be specified on the inside of the end panels - see accessories at the end of this section
- For two different laminate colors, call factory for pricing
- Antibacterial and antimicrobial fabrics available
- If different grades of fabric specified on different cushions, use higher graded fabric price
- COM 0.5 yd per cushion
- CAL 133, add \$52 List per cushion

Contact Spec Customer Service to railroad fabrics and for repeats greater than 5" x 5"



MODEL	DESCRIPTION	TOP SPECIFICATIONS						DIMENSIONS			LBS	
		COM	GR1	GR2	GR3	GR4	GR5	GR6	H (in)	W (in)		D (in)
<i>Two Seat</i>												
ENDB2	No Cushions	1919						17	48	20	74	
ENDB2-CC	2 Cushions	2179	2235	2254	2292	2349	2393	2451	18	48	20	80
<i>Three Seat</i>												
ENDB3	No Cushions	2255							17	72	20	96
ENDB3-CCC	3 Cushions	2645	2729	2757	2815	2901	2966	3053	18	72	20	105
ENDB3-TCCT	2 Cushions Centered	2515	2571	2590	2628	2685	2729	2787	18	72	20	102
ENDB3-CCT	2 Cushions Left Aligned	2515	2571	2590	2628	2685	2729	2787	18	72	20	102
ENDB3-TCC	2 Cushions Right Aligned	2515	2571	2590	2628	2685	2729	2787	18	72	20	102
ENDB3-CTC	Cushion Seat on Each End	2515	2571	2590	2628	2685	2729	2787	18	72	20	102



ENDZONE BENCHES

Standard Features

- 2" built up edge
- 2mm Edge (2MM)
- Laminate Top, End Panels, and Support Beam
- Select from 15 standard laminates or choose any standard Wilsonart, Nevamar, Formica, Arborite and Pionite matte finish laminates at no upcharge. For other laminate please contact the factory for pricing.
- Adjustable Glides
- Weight load tested to 250 lbs per seat
- 20" deep

Options

- 2mm Bio edge available in 38 solid colors
- 2mm PVC edge available in wood grain to match 9 standard stains
- For 16" depth add suffix "-16" to product code
- Cove Power Modules can only be specified on the outside of the end panels - see accessories at the end of this section
- Vertical Wire Manager can only be specified on the inside of the end panels - see accessories at the end of this section
- For two different laminate colors, call factory for pricing
- Antibacterial and antimicrobial fabrics available
- If different grades of fabric specified on different cushions, use higher graded fabric price
- COM 0.5 yd per cushion
- CAL 133, add \$52 List per cushion

Contact Spec Customer Service to railroad fabrics and for repeats greater than 5" x 5"

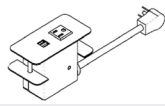

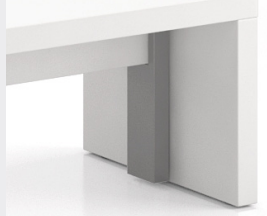


MODEL	DESCRIPTION	TOP SPECIFICATIONS						DIMENSIONS			LBS	
		COM	GR1	GR2	GR3	GR4	GR5	GR6	H (in)	W (in)		D (in)
<i>Four Seat</i>												
ENDB4	No Cushions	2582							17	96	20	118
ENDB4-CCCC	4 Cushions	3102	3215	3252	3329	3443	3531	3647	18	96	20	130
ENDB4-TCCCT	3 Cushions Centered	2972	3057	3085	3143	3228	3294	3381	18	96	20	127
ENDB4-CCCT	3 Cushions Left Aligned	2972	3057	3085	3143	3228	3294	3381	18	96	20	127
ENDB4-TCCC	3 Cushions Right Aligned	2972	3057	3085	3143	3228	3294	3381	18	96	20	127
ENDB4-CTCC	1 Cushion Left Aligned, 2 Cushions Right Aligned	2972	3057	3085	3143	3228	3294	3381	18	96	20	127
ENDB4-CCTC	2 Cushions Left Aligned, 1 Cushion Right Aligned	2972	3057	3085	3143	3228	3294	3381	18	96	20	127

ENDZONE BENCHES

POWER & COMMUNICATION

Cove Power Modules

	MODEL	DESCRIPTION	LIST	
		Cove, Clamp Mounted		
	COV-1U-B	Cove, 1 power, 2USB, Black	419	
	COV-1U-S	Cove, 1 power, 2USB, Silver Pearl	419	
	COV-1U-W	Cove, 1 power, 2USB, Gloss White	419	
		<i>Cord is 108". USB is for charging only.</i>		
	RVWM-L	Rectangular Vertical Wire Manager for EndZone Benches	129	
	RVWM-R	Fixed sheet metal cover. Specify placement on the inside of the left (RVWM-L) and/or right (RVWM-R) end panel as viewed from the front.	129	

