

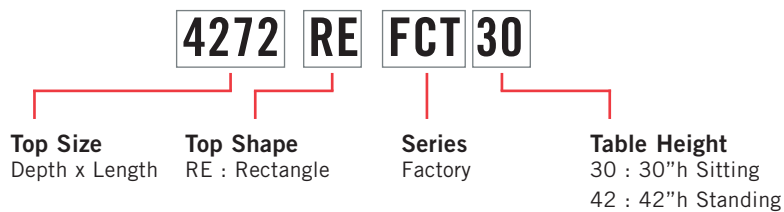


Shipping Jul 1, 2018

FACTORY TABLE

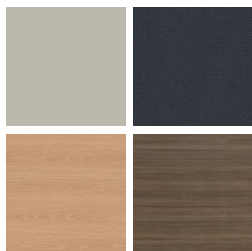


PRODUCT CODE



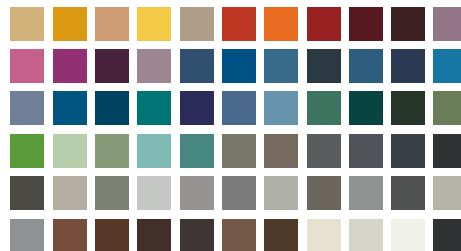
FINISHES

LAMINATE



Select from 15 standard laminates or choose any standard Wilsonart, Nevamar, Formica, Arborite and Pionite matte finish laminates at no upcharge

BASE



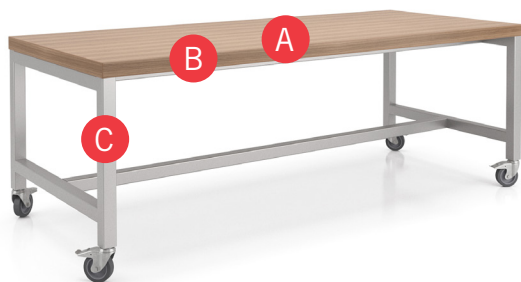
Select from one of our 76 standard Spectone colors

EDGE



See Spectone Card or specfurniture.com/materials/finishes for a complete list of finish options and colors.

HOW TO ORDER



Specify Top Size (Width x Length)

A Specify Top Finish
Manufacturer, Laminate Name, Laminate Code

B Specify Edge Type and Finish
2mm Bio/2mm PVC Woodgrain/Self Edge

C Specify Base Style and Finish

Optional: Casters, Footrest, Power and Data Modules, 1-3/4" Solid Wood Top

Top Size	Top Finish	Edge Type and Finish	Base Style and Finish	Option specified
36 x 84	Laminate, Arborite, Brown Sugar	Self Edge, Laminate, Arborite, Brown Sugar	FCT30, Silver	Casters



Shipping Jul 1, 2018

FACTORY TABLE GENERAL PURPOSE



MODEL	BASES	TOP SPECIFICATIONS	OPTIONS		LBS
	<i>Code</i>	<i>For Laminate Top SE 2MM</i>	<i>Casters¹</i>	<i>Footrest</i>	
<i>30" high</i>					
36 X 72RE	FCT30	3121	376	543	156
36 X 84RE	FCT30	3351	376	543	174
36 X 96RE	FCT30	3580	376	543	192
42 X 72RE	FCT30	3351	376	543	172
42 X 84RE	FCT30	3619	376	543	191
42 X 96RE	FCT30	3886	376	543	211
<i>42" high</i>					
36 X 72RE	FCT42	3247	376	543	164
36 X 84RE	FCT42	3477	376	543	182
36 X 96RE	FCT42	3706	376	543	200
42 X 72RE	FCT42	3477	376	543	179
42 X 84RE	FCT42	3745	376	543	199
42 X 96RE	FCT42	4012	376	543	219



¹ For four (4) casters



STANDARD FEATURES

- 2" built up edge
- 2" square leg
- Select from 15 standard laminates or choose any standard Wilsonart, Nevamar, Formica, Arborite and Pionite matte finish laminates at no upcharge. For other laminate please contact the factory for pricing.
- Standard with two bases and one bottom stretcher.
- Standard with leveling glides.
- Bases available in any Spectone color.
- Standard 30" or 42" table height, please specify.
- Ships Knocked Down.

OPTIONS

- 4 casters standard in Grey
- Footrest on both sides
- For applicable Power & Data modules, please see Table Accessories Price List.
- For veneer finishes or 1-3/4" solid wood top, please contact the factory.
- Chroming is available, please contact the factory.

HOW TO ORDER

1. Select Model
2. Select Base
3. Select Edge Style
4. Select Options
5. Select Top Finish
6. Select Edge Finish
7. Select Base Finish

Example: 3684RE - FCT30 - 2MM

