

# GRAVITY Public Seating

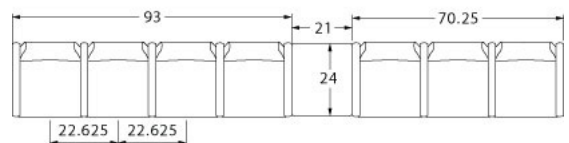
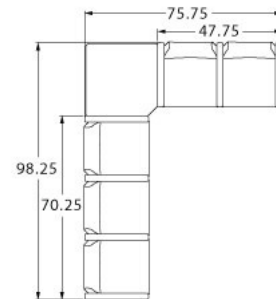
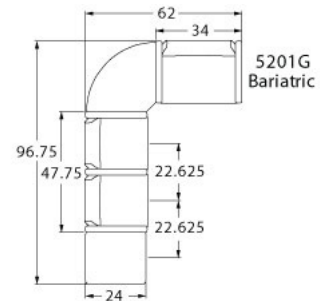
## LAYOUTS



### Description

- Spec's Gravity Public Seating offers specifiers outstanding value in an eco-friendly design.
- Your layout possibilities are unlimited with spacer, radius and corner tables – for both standard and bariatric seating in virtually any combination.
- Bariatric seating is a 30" wide seat and is load tested to 750 lbs. Cannot be connected to other bariatric seats.
- 21" seat width is standard.
- Standard with steel arms.
- Choice of wood or black polyurethane arms at an upcharge.
- Wood and polyurethane arms are replaceable in the field.
- All models offer a choice of no center arms, half arms or full arms to the floor.
- Glides and separate seat and Flex Back are standard.
- Foam formulated to meet California Bulletin 133 standards is available.
- Please send a drawing of the configuration you require with your order.
- For fabrics you wish railroaded or repeats larger than 5" x 5", please contact the factory with repeat information and yardage requirement will be provided.

### LAYOUTS AND DIMENSIONS





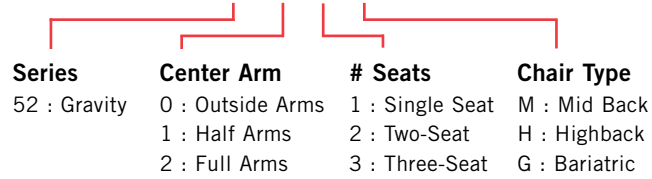
# GRAVITY Public Seating



PLACING AN ORDER IS EASY

**PRODUCT CODE**

**5201M**



**OPTIONS**

**ARM TYPE**



Polyurethane



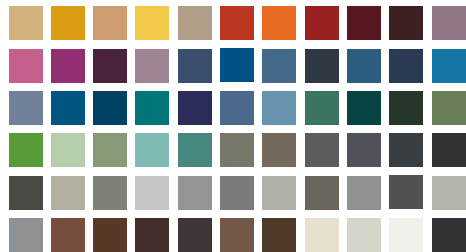
Wood



Steel

**FINISHES**

**FRAME**



Select from one of our 76 standard Spectone colors

**FABRIC**



Select fabrics from one of our textile partners

**ARMS**



Black

Sterling Grey

Taupe

9 standard wood stains or stain-to-match at no upcharge.



# GRAVITY Public Seating

## Single Seater with arms

### Standard Features

- Separate seat and Flex Back
- Steel arms
- Fully welded wall-saving frame
- Frame in any Spectone color
- Velcro removable back covers
- Replaceable seats
- Use in connected layouts at no upcharge
- Glides
- Ships assembled as 1, 2 or 3 seaters
- Ships 1/carton 15 cu ft

### Options

- Field-replaceable polyurethane arms, see upcharge
- Polyurethane arms available in Black, Sterling Grey and Taupe (RAL 7006)
- Field-replaceable wood arms in Natural Maple, see upcharge. Available in any of 9 standard stains or stain-to-match at no upcharge
- Connected and freestanding tables
- Antibacterial and antimicrobial fabrics available
- Different fabric on seat and back at no upcharge
- CAL 133

Contact Spec™ Customer Service to railroad fabrics (specify repeat info and yardage requirement will be provided) and for repeats greater than 5" x 5"



### Single Seater with arms

COM 1.75 yds  
 0.75 yd COM per single seat  
 1.0 yd COM per single back

MODEL	COM	GR 1	GR 2	GR 3	GR 4	GR 5	GR 6
<b>5201M</b>	<b>672</b>	<b>746</b>	<b>769</b>	<b>819</b>	<b>892</b>	<b>948</b>	<b>1022</b>

For polyurethane arms add suffix P and \$94  
 For wood arms add suffix W and \$148

Dimensions (inches)

seat H	18.0	seat W	21.0	arm H	26.5
total H	35.75	total W	25.0	depth	27.5

Exceeds BIFMA Seating Durability Test to 500 lbs per chair  
 CAL 133, add \$113 List per chair



\*Shown with optional polyurethane arms

# GRAVITY Public Seating

Two and Three Seaters with outside arms

## Standard Features

- Separate seat and Flex Back
- Steel arms
- Fully welded wall-saving frame
- Frame in any Spectone color
- Velcro removable back covers
- Replaceable seats
- Use in connected layouts at no upcharge
- Glides
- Ships assembled as 1, 2 or 3 seaters
- Ships 1/carton 26 cu ft (2 seater),  
1/carton 39 cu ft (3 seater)

## Options

- Field-replaceable polyurethane arms, see upcharge
- Polyurethane arms available in Black, Sterling Grey and Taupe (RAL 7006)
- Field-replaceable wood arms in Natural Maple, see upcharge. Available in any of 9 standard stains or stain-to-match at no upcharge
- Connected and freestanding tables
- Antibacterial and antimicrobial fabrics available
- Different fabric on seat and back at no upcharge
- CAL 133

Contact Spec Customer Service to railroad fabrics (specify repeat info and yardage requirement will be provided) and for repeats greater than 5" x 5"



## Two Seater with outside arms

COM 3.5 yds  
0.75 yd COM per single seat  
1.0 yd COM per single back

MODEL	COM	GR 1	GR 2	GR 3	GR 4	GR 5	GR 6
<b>5202M</b>	<b>1204</b>	<b>1354</b>	<b>1403</b>	<b>1502</b>	<b>1648</b>	<b>1760</b>	<b>1909</b>

For polyurethane arms add suffix P and \$94  
For wood arms add suffix W and \$148

Dimensions (inches)

	seat H	18.0	seat W	21.0	arm H	26.5
total H	35.75	total W	46.0	depth	27.5	

Exceeds BIFMA Seating Durability Test to 500 lbs per two seater  
CAL 133, add \$226 List per two seater



**5202M\***  
54 lbs

## Three Seater with outside arms

COM 5.25 yds  
0.75 yd COM per single seat  
1.0 yd COM per single back

MODEL	COM	GR 1	GR 2	GR 3	GR 4	GR 5	GR 6
<b>5203M</b>	<b>1785</b>	<b>2010</b>	<b>2082</b>	<b>2229</b>	<b>2450</b>	<b>2617</b>	<b>2840</b>

For polyurethane arms add suffix P and \$94  
For wood arms add suffix W and \$148

Dimensions (inches)

	seat H	18.0	seat W	21.0	arm H	26.5
total H	35.75	total W	67.0	depth	27.5	

Exceeds BIFMA Seating Durability Test to 500 lbs per three seater  
CAL 133, add \$339 List per three seater



**5203M\***  
78 lbs

\*Shown with optional polyurethane arms



# GRAVITY Public Seating

## Two and Three Seaters with half arms

### Standard Features

- Separate seat and Flex Back
- Steel arms
- Fully welded wall-saving frame
- Frame in any Spectone color
- Velcro removable back covers
- Replaceable seats
- Use in connected layouts at no upcharge
- Glides
- Ships assembled as 1, 2 or 3 seaters
- Ships 1/carton 26 cu ft (2 seater),  
1/carton 39 cu ft (3 seater)

### Options

- Field-replaceable polyurethane arms, see upcharge
- Polyurethane arms available in Black, Sterling Grey and Taupe (RAL 7006)
- Field-replaceable wood arms in Natural Maple, see upcharge. Available in any of 9 standard stains or stain-to-match at no upcharge
- Connected and freestanding tables
- Antibacterial and antimicrobial fabrics available
- Different fabric on seat and back at no upcharge
- CAL 133

Contact Spec Customer Service to railroad fabrics (specify repeat info and yardage requirement will be provided) and for repeats greater than 5" x 5"



### Two Seater with half arms

COM 3.5 yds  
0.75 yd COM per single seat  
1.0 yd COM per single back

MODEL	COM	GR 1	GR 2	GR 3	GR 4	GR 5	GR 6
<b>5212M</b>	<b>1315</b>	<b>1465</b>	<b>1513</b>	<b>1613</b>	<b>1758</b>	<b>1870</b>	<b>2019</b>

For polyurethane arms add suffix P and \$141  
For wood arms add suffix W and \$222

Dimensions (inches)

seat H	18.0	seat W	21.0	arm H	26.5
total H	35.75	total W	47.75	depth	27.5

Exceeds BIFMA Seating Durability Test to 500 lbs per two seater  
CAL 133, add \$226 List per two seater



**5212M\***  
57 lbs

### Three Seater with half arms

COM 5.25 yds  
0.75 yd COM per single seat  
1.0 yd COM per single back

MODEL	COM	GR 1	GR 2	GR 3	GR 4	GR 5	GR 6
<b>5213M</b>	<b>1973</b>	<b>2197</b>	<b>2270</b>	<b>2417</b>	<b>2638</b>	<b>2805</b>	<b>3029</b>

For polyurethane arms add suffix P and \$188  
For wood arms add suffix W and \$296

Dimensions (inches)

seat H	18.0	seat W	21.0	arm H	26.5
total H	35.75	total W	70.25	depth	27.5

Exceeds BIFMA Seating Durability Test to 500 lbs per two seater  
CAL 133, add \$339 List per three seater



**5213M\***  
81 lbs

\*Shown with optional polyurethane arms



# GRAVITY Public Seating

Two and Three Seaters with full arms

## Standard Features

- Separate seat and Flex Back
- Steel arms
- Fully welded wall-saving frame
- Frame in any Spectone color
- Velcro removable back covers
- Replaceable seats
- Use in connected layouts at no upcharge
- Glides
- Ships assembled as 1, 2 or 3 seaters
- Ships 1/carton 26 cu ft (2 seater),  
1/carton 39 cu ft (3 seater)

## Options

- Field-replaceable polyurethane arms, see upcharge
- Polyurethane arms available in Black, Sterling Grey and Taupe (RAL 7006)
- Field-replaceable wood arms in Natural Maple, see upcharge. Available in any of 9 standard stains or stain-to-match at no upcharge
- Connected and freestanding tables
- Antibacterial and antimicrobial fabrics available
- Different fabric on seat and back at no upcharge
- CAL 133

Contact Spec Customer Service to railroad fabrics (specify repeat info and yardage requirement will be provided) and for repeats greater than 5" x 5"



## Two Seater with full arms

COM 3.5 yds  
0.75 yd COM per single seat  
1.0 yd COM per single back

MODEL	COM	GR 1	GR 2	GR 3	GR 4	GR 5	GR 6
<b>5222M</b>	<b>1315</b>	<b>1465</b>	<b>1513</b>	<b>1613</b>	<b>1758</b>	<b>1870</b>	<b>2019</b>

For polyurethane arms add suffix P and \$141  
For wood arms add suffix W and \$222

Dimensions (inches)

	seat H	18.0	seat W	21.0	arm H	26.5
total H	35.75	total W	47.75	depth	27.5	

Exceeds BIFMA Seating Durability Test to 500 lbs per two seater  
CAL 133, add \$226 List per two seater



**5222M\***  
57 lbs

## Three Seater with full arms

COM 5.25 yds  
0.75 yd COM per single seat  
1.0 yd COM per single back

MODEL	COM	GR 1	GR 2	GR 3	GR 4	GR 5	GR 6
<b>5223M</b>	<b>1973</b>	<b>2197</b>	<b>2270</b>	<b>2417</b>	<b>2638</b>	<b>2805</b>	<b>3029</b>

For polyurethane arms add suffix P and \$188  
For wood arms add suffix W and \$296

Dimensions (inches)

	seat H	18.0	seat W	21.0	arm H	26.5
total H	35.75	total W	70.25	depth	27.5	

Exceeds BIFMA Seating Durability Test to 500 lbs per three seater  
CAL 133, add \$339 List per three seater



**5223M\***  
81 lbs

\*Shown with optional polyurethane arms



# GRAVITY Public Seating

## Bariatric Single Seater with arms

### Standard Features

- Separate seat and Flex Back
- Steel arms
- Fully welded wall-saving frame
- Frame in any Spectone color
- Velcro removable back covers
- Replaceable seats
- Use in connected layouts at no upcharge
- Glides
- Cannot connect bariatric seating to bariatric seating
- Ships assembled as 1, 2 or 3 seaters
- Ships 1/carton 20 cu ft

### Options

- Field-replaceable polyurethane arms, see upcharge
- Polyurethane arms available in Black, Sterling Grey and Taupe (RAL 7006)
- Field-replaceable wood arms in Natural Maple, see upcharge. Available in any of 9 standard stains or stain-to-match at no upcharge
- Connected and freestanding tables
- Antibacterial and antimicrobial fabrics available
- Different fabric on seat and back at no upcharge
- CAL 133

Contact Spec Customer Service to railroad fabrics (specify repeat info and yardage requirement will be provided) and for repeats greater than 5" x 5"




---

### Bariatric Single Seater with arms

---

COM 3.0 yds  
 1.5 yd COM per single seat  
 1.5 yd COM per single back

MODEL	COM	GR 1	GR 2	GR 3	GR 4	GR 5	GR 6
<b>5201G</b>	<b>842</b>	<b>990</b>	<b>1039</b>	<b>1138</b>	<b>1284</b>	<b>1397</b>	<b>1544</b>

For polyurethane arms add suffix P and \$94  
 For wood arms add suffix W and \$148

Dimensions (inches)

seat H	18.0	seat W	30.0	arm H	26.5
total H	35.75	total W	34.0	depth	27.5

Exceeds BIFMA Seating Durability Test to 750 lbs per chair  
 CAL 133, add \$153 List per chair



**5201G\***  
37 lbs

\*Shown with optional polyurethane arms



# GRAVITY Public Seating

## Highback Single Seater with arms – Ottoman and Headrest

### Standard Features

- Separate seat and Flex Back
- Steel arms
- Fully welded wall-saving frame
- Frame in any Spectone color
- Velcro removable back covers
- Replaceable seats
- Use in connected layouts at no upcharge
- Glides
- Ships assembled as 1, 2 or 3 seaters
- Ships 1/carton 18 cu ft

### Options

- Field-replaceable polyurethane arms, see upcharge
- Polyurethane arms available in Black, Sterling Grey and Taupe (RAL 7006)
- Field-replaceable wood arms in Natural Maple, see upcharge. Available in any of 9 standard stains or stain-to-match at no upcharge
- Connected and freestanding tables
- Antibacterial and antimicrobial fabrics available
- Different fabric on seat and back at no upcharge
- CAL 133

Contact Spec Customer Service to railroad fabrics (specify repeat info and yardage requirement will be provided) and for repeats greater than 5" x 5"



### Highback Single Seater with arms

COM 1.85 yds  
 0.75 yd COM per single seat  
 1.1 yds COM per single back

MODEL	COM	GR 1	GR 2	GR 3	GR 4	GR 5	GR 6
<b>5201H</b>	<b>720</b>	<b>813</b>	<b>843</b>	<b>903</b>	<b>995</b>	<b>1062</b>	<b>1155</b>

For polyurethane arms add suffix P and \$94  
 For wood arms add suffix W and \$148

Dimensions (inches)

seat H	18.0	seat W	21.0	arm H	26.5
total H	44.5	total W	25.0	depth	27.5

Exceeds BIFMA Seating Durability Test to 500 lbs per chair  
 CAL 133, add \$116 List per chair



**5201H\***  
35 lbs

\*Shown with optional polyurethane arms



# GRAVITY Public Seating

## Freestanding Lounge Tables – Corner and Spacer Connecting Tables

### Standard Features

- Tops in laminate or veneer
- Select laminate tops from 15 standard laminates or choose any standard Wilsonart, Nevamar, Formica, Arborite and Pionite matte finish laminates at no upcharge.
- Freestanding lounge tables available with PVC Flat (PVF), 2mm (2MM) or hardwood (HB) edge
- Connecting table tops available with PVC Flat (PVF) edge, Self edge (SE) or hardwood (HB) edge
- 9 standard veneer and hardwood edge stains. Stain-to-match available at no upcharge.
- 1.75" post legs in any Spectone color
- Tops utilize Nu Green earth friendly core
- Glides
- 18" height

### Options

- Non-standard laminates, contact Spec for pricing
- Custom size spacer tables for restricted spaces
- Other sizes may be available

*Radius Corner Tables are recommended for open areas*



### Freestanding Lounge Tables

Model	Laminate PVF/SE/2MM	Laminate HB Edge	Veneer HB Edge	Weight	Cu.Ft.
52 - 24 x 24 SQ	534	695	821	28	7.2
52 - 24 x 48 RE	669	842	1019	48	18
52 - 30 x 30 SQ	623	739	875	43	13.5
52 - 24 DIA	511	802	971	26	7.2
52 - 30 DIA	594	884	1055	40	7.2



### Corner and Spacer Connecting Tables

Model	Laminate PVF/SE	Laminate HB Edge	Veneer HB Edge	Weight	Cu.Ft.
52RC - 28 x 28 <i>Radius Corner Table</i>	575	720	891	26	2
52SC - 28 x 28 <i>Square Corner Table</i>	575	705	826	26	2
52TC - 45 degree <i>Corner Table</i>	575	720	891	19	2
52ST - 21 x 24 <i>Spacer Table</i>	441	600	728	19	2
52ET - 21 x 24 <i>End Table</i>	486	647	773	19	2

