

# HARDI Behavioral Health Series

SIN 71-315



## PLACING AN ORDER IS EASY

### PRODUCT CODE

87 01

**Series**

87 : Hardi Dining  
88 : Hardi Lounge

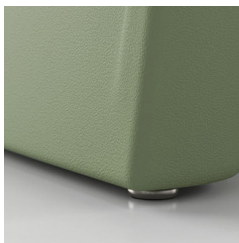
**Number of Seats**

01 : Single Seater



### OPTIONS

**GLIDES**



**ADDITIONAL WEIGHT**



**CONNECTING PLATE**



### FINISHES



7015

6021

7037



5014

7006

7044

Select from 6 standard colors. Custom colors may be available based on quantity. Contact Customer Service.



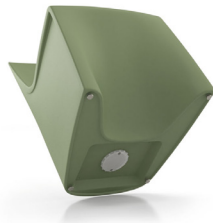
# HARDI Behavioral Health Series

For warmth, strength and sustainability

SIN 71-315

## Standard Features

- Single roto-molded design
- Select from 6 standard colors, which have been selected from our palette of standard Spectone finishes, to match any ancillary Spec product (with metal frames) in the room
- No protruding legs or hardware
- Standard without glides
- Ships 1/carton 15 cu ft
- Hardi may be built without metal parts. Contact Customer Service
- Removable threaded cap is fastened with tamperproof fasteners. Sand can be added on site for additional weight and ballast utilizing the plastic bag from packaging. Contact Customer Service for more information



## Options

- Nickel-plated non-removable steel glides secured with Loctite, add \$18 List
- Ganging available at \$137 List
- Floor mounting straps available, call Customer Service
- CAL 133 available, call Customer Service



## Dining

MODEL	Price
<b>8701</b>	<b>491</b>

### Dimensions (inches)

seat H	18.0	seat W	19.0		
total H	32.75	total W	20.0	depth	24.0



**8701**  
23 lbs

## Lounge

MODEL	Price
<b>8801</b>	<b>561</b>

### Dimensions (inches)

seat H	17.25	seat W	23.0		
total H	29.5	total W	24.0	depth	26.0



**8801**  
26 lbs