



Pricing August 2017
Discount 57.7% from List prices



HARDI Behavioral Health Series



PRODUCT CODE

87 01

Series

87 : Hardi Dining
88 : Hardi Lounge

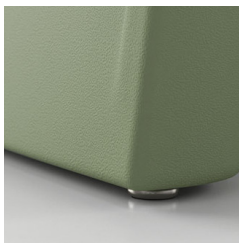
Number of Seats

01 : Single Seater



OPTIONS

GLIDES



ADDITIONAL WEIGHT



CONNECTING PLATE



FINISHES



7015

6021

7037



5014

7006

7044

Select from 6 standard colors. Custom colors may be available based on quantity. Contact Customer Service.



Pricing August 2017
Discount 57.7% from List prices



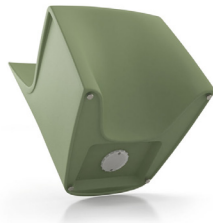
OPEN MARKET

HARDI Behavioral Health Series

For warmth, strength and sustainability

Standard Features

- Single roto-molded design
- CAL 133 compliant
- Select from 6 standard colors, which have been selected from our palette of standard Spectone finishes, to match any ancillary Spec™ product (with metal frames) in the room
- No protruding legs or hardware
- Standard without glides
- Ships 1/carton 15 cu ft
- Hardi may be built without metal parts. Contact Customer Service
- Removable threaded cap is fastened with tamperproof fasteners. Sand can be added on site for additional weight and ballast utilizing the plastic bag from packaging. Contact Customer Service for more information



Options

- Nickel-plated non-removable steel glides secured with Loctite, add \$18 List
- Ganging available at \$137 List
- Floor mounting straps available, call Customer Service



Dining

| MODEL | Price |
|-------------|------------|
| 8701 | 491 |

Dimensions (inches)

| | | | | | |
|---------|-------|---------|------|-------|------|
| seat H | 18.0 | seat W | 19.0 | | |
| total H | 32.75 | total W | 20.0 | depth | 24.0 |



8701
23 lbs

Lounge

| MODEL | Price |
|-------------|------------|
| 8801 | 561 |

Dimensions (inches)

| | | | | | |
|---------|-------|---------|------|-------|------|
| seat H | 17.25 | seat W | 23.0 | | |
| total H | 29.5 | total W | 24.0 | depth | 26.0 |



8801
26 lbs