

MIDWAY Public Seating

LAYOUTS

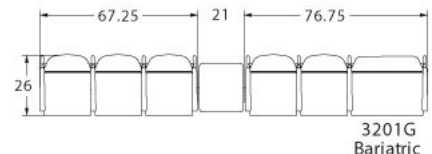
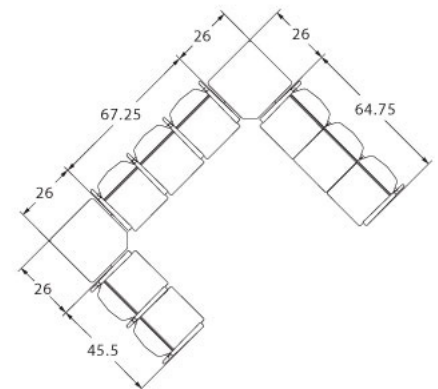
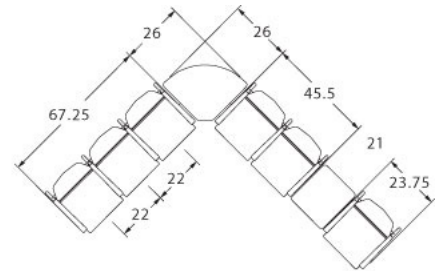


Description

- Spec's high durability public seating in a lighter scale allows specifiers to maximize space requirements.
- Your layout possibilities are unlimited with spacer, radius and corner tables – for both standard and bariatric seating in virtually any combination.
- Bariatric seating is a 30" wide seat and is load tested to 750 lbs. Cannot be connected to other bariatric seats.
- 20.5" seat width is standard.
- Choice of polyurethane or wood arms which are replaceable in the field.
- All models offer a choice of no center arms, half arms or full arms to the floor.
- 1.25" diameter wall-saving frame is standard to protect both wall and fabric.
- Separate seat and back provide exceptional comfort and ease of maintenance.
- Please send a drawing of the configuration you require with your order.
- Optional floor mounting glides available.
- For fabrics you wish railroaded or repeats larger than 5" x 5", please contact the factory with repeat information and yardage requirement will be provided.



LAYOUTS AND DIMENSIONS





Pricing August 2017
Discount 57.7% from List prices



MIDWAY Public Seating



PLACING AN ORDER IS EASY

PRODUCT CODE

3201U

Series	Arm/Other	# Seats	Chair Type
32 : Midway	0 : Outside Arms 1 : Half Arms 2 : Full Arms 3 : Easy Access Hip Chair	1 : Single Seat 2 : Two-Seat 3 : Three-Seat	U : Mid Back H : Highback G : Bariatric GH : Highback Bariatric



OPTIONS

ARM



Wood Arm



Poly Arm

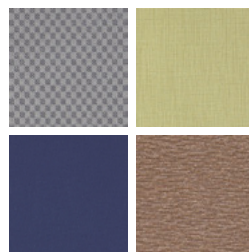
FINISHES

FRAME



Select from one of our 76 standard Spectone colors

FABRIC



Select fabrics from one of our textile partners

ARMS



*Wood arms are available in 9 standard stains or stain-to-match at no upcharge.



MIDWAY Public Seating

Single Seater with arms

Standard Features

- Separate seat and back
- Polyurethane arms or wood arms
- Fully welded 1.25" frame with glides
- Frame in any Spectone color
- Velcro removable back covers
- Replaceable seats
- Use in connected layouts at no upcharge
- Arms replaceable in the field
- Ships assembled as 1, 2 or 3 seaters
- Ships 1/carton 17 cu ft

Options

- Polyurethane arms available in Black, Sterling Grey or Taupe (RAL 7006)
- Wood arms in Natural Maple are available in any of 9 standard stains or stain-to-match at no upcharge
- For Flex back add suffix FB and \$169 List.
Note: Wall-saving frame is not available when Flex back is specified.
- Connected and freestanding tables
- Antibacterial and antimicrobial fabrics available
- Different fabric on seat and back at no upcharge
- CAL 133

Contact Spec™ Customer Service to railroad fabrics (specify repeat info and yardage requirement will be provided) and for repeats greater than 5" x 5"



Single Seater with arms

COM 1.5 yds
0.5 yd COM per single seat
1.0 yd COM per single back

MODEL	COM	GR 1	GR 2	GR 3	GR 4	GR 5	GR 6
3201U	914	1018	1053	1121	1226	1306	1410

Dimensions (inches)

seat H	18.0	seat W	20.5	arm H	26.0
total H	36.0	total W	23.75	depth	26.0

Exceeds BIFMA Seating Durability Test to 500 lbs per chair
CAL 133, add \$112 List per chair



3201U
37 lbs



MIDWAY Public Seating

Two and Three Seaters with outside arms

Standard Features

- Separate seat and back
- Polyurethane arms or wood arms
- Fully welded 1.25" frame with glides
- Frame in any Spectone color
- Velcro removable back covers
- Replaceable seats
- Use in connected layouts at no upcharge
- Arms replaceable in the field
- Ships assembled as 1, 2 or 3 seaters
- Ships 1/carton 28 cu ft (2 seater),
1/carton 42 cu ft (3 seater)

Options

- Polyurethane arms available in Black, Sterling Grey or Taupe (RAL 7006)
- Wood arms in Natural Maple are available in any of 9 standard stains or stain-to-match at no up charge
- Connected and freestanding tables
- Antibacterial and antimicrobial fabrics available
- Different fabric on seat and back at no upcharge
- CAL 133

Contact Spec Customer Service to railroad fabrics (specify repeat info and yardage requirement will be provided) and for repeats greater than 5" x 5"



Two Seater with outside arms

COM 3.0 yds
0.5 yd COM per single seat
1.0 yd COM per single back

MODEL	COM	GR 1	GR 2	GR 3	GR 4	GR 5	GR 6
3202U	1462	1668	1737	1876	2084	2244	2451

Dimensions (inches)

seat H	18.0	seat W	20.5	arm H	26.0
total H	36.0	total W	44.25	depth	26.0

Exceeds BIFMA Seating Durability Test to 500 lbs per two seater
CAL 133, add \$224 List per two seater



3202U
66 lbs

Three Seater with outside arms

COM 4.5 yds
0.5 yd COM per single seat
1.0 yd COM per single back

MODEL	COM	GR 1	GR 2	GR 3	GR 4	GR 5	GR 6
3203U	1952	2265	2369	2578	2888	3126	3438

Dimensions (inches)

seat H	18.0	seat W	20.5	arm H	26.0
total H	36.0	total W	64.75	depth	26.0

Exceeds BIFMA Seating Durability Test to 500 lbs per three seater
CAL 133, add \$336 List per three seater



3203U
94 lbs



MIDWAY Public Seating

Two and Three Seaters with half arms

Standard Features

- Separate seat and back
- Polyurethane arms or wood arms
- Fully welded 1.25" frame with glides
- Frame in any Spectone color
- Velcro removable back covers
- Replaceable seats
- Use in connected layouts at no upcharge
- Arms replaceable in the field
- Ships assembled as 1, 2 or 3 seaters
- Ships 1/carton 28 cu ft (2 seater),
1/carton 42 cu ft (3 seater)

Options

- Polyurethane arms available in Black, Sterling Grey or Taupe (RAL 7006)
- Wood arms in Natural Maple are available in any of 9 standard stains or stain-to-match at no up charge
- Connected and freestanding tables
- Antibacterial and antimicrobial fabrics available
- Different fabric on seat and back at no upcharge
- CAL 133

Contact Spec Customer Service to railroad fabrics (specify repeat info and yardage requirement will be provided) and for repeats greater than 5" x 5"



Two Seater with half arms

COM 3.0 yds
0.5 yd COM per single seat
1.0 yd COM per single back

MODEL	COM	GR 1	GR 2	GR 3	GR 4	GR 5	GR 6
3212U	1640	1848	1917	2058	2265	2425	2632

Dimensions (inches)

	seat H	18.0	seat W	20.5	arm H	26.0
total H	36.0	total W	45.5	depth	26.0	

Exceeds BIFMA Seating Durability Test to 500 lbs per two seater
CAL 133, add \$224 List per two seater



3212U
68 lbs

Three Seater with half arms

COM 4.5 yds
0.5 yd COM per single seat
1.0 yd COM per single back

MODEL	COM	GR 1	GR 2	GR 3	GR 4	GR 5	GR 6
3213U	2280	2591	2697	2904	3217	3454	3765

Dimensions (inches)

	seat H	18.0	seat W	20.5	arm H	26.0
total H	36.0	total W	67.25	depth	26.0	

Exceeds BIFMA Seating Durability Test to 500 lbs per three seater
CAL 133, add \$336 List per three seater



3213U
94 lbs



MIDWAY Public Seating

Two and Three Seaters with full arms

Standard Features

- Separate seat and back
- Polyurethane arms or wood arms
- Fully welded 1.25" frame with glides
- Frame in any Spectone color
- Velcro removable back covers
- Replaceable seats
- Use in connected layouts at no upcharge
- Arms replaceable in the field
- Ships assembled as 1, 2 or 3 seaters
- Ships 1/carton 28 cu ft (2 seater),
1/carton 42 cu ft (3 seater)

Options

- Polyurethane arms available in Black, Sterling Grey or Taupe (RAL 7006)
- Wood arms in Natural Maple are available in any of 9 standard stains or stain-to-match at no upcharge
- Connected and freestanding tables
- Antibacterial and antimicrobial fabrics available
- Different fabric on seat and back at no upcharge
- CAL 133

Contact Spec Customer Service to railroad fabrics (specify repeat info and yardage requirement will be provided) and for repeats greater than 5" x 5"



Two Seater with full arms

COM 3.0 yds
0.5 yd COM per single seat
1.0 yd COM per single back

MODEL	COM	GR 1	GR 2	GR 3	GR 4	GR 5	GR 6
3222U	1692	1900	1970	2110	2318	2477	2685

Dimensions (inches)

	seat H	18.0	seat W	20.5	arm H	26.0
total H	36.0	total W	45.5	depth	26.0	

Exceeds BIFMA Seating Durability Test to 500 lbs per two seater
CAL 133, add \$224 List per two seater



3222U
70 lbs

Three Seater with full arms

COM 4.5 yds
0.5 yd COM per single seat
1.0 yd COM per single back

MODEL	COM	GR 1	GR 2	GR 3	GR 4	GR 5	GR 6
3223U	2391	2702	2807	3015	3326	3565	3878

Dimensions (inches)

	seat H	18.0	seat W	20.5	arm H	26.0
total H	36.0	total W	67.25	depth	26.0	

Exceeds BIFMA Seating Durability Test to 500 lbs per three seater
CAL 133, add \$336 List per three seater



3223U
96 lbs



MIDWAY Public Seating

Bariatric Single Seater with arms

Standard Features

- Separate seat and back
- Polyurethane arms or wood arms
- Fully welded 1.25" frame with glides
- Frame in any Spectone color
- Velcro removable back covers
- Replaceable seats
- Use in connected layouts at no upcharge
- Arms replaceable in the field
- Bariatric seating cannot connect to bariatric seating
- Ships assembled as 1, 2 or 3 seaters
- Bariatric ships 1/carton 22 cu ft

Options

- Polyurethane arms available in Black, Sterling Grey or Taupe (RAL 7006)
- Wood arms in Natural Maple are available in any of 9 standard stains or stain-to-match at no upcharge
- Connected and freestanding tables
- Antibacterial and antimicrobial fabrics available
- Different fabric on seat and back at no upcharge
- CAL 133

Contact Spec Customer Service to railroad fabrics (specify repeat info and yardage requirement will be provided) and for repeats greater than 5" x 5"



Bariatric Single Seater with arms

COM 2.55 yds
0.8 yd COM per single seat
1.75 yd COM per single back

MODEL	COM	GR 1	GR 2	GR 3	GR 4	GR 5	GR 6
3201G	1113	1257	1306	1399	1543	1653	1797

Dimensions (inches)

seat H	18.0	seat W	30.0	arm H	26.0
total H	36.0	total W	32.75	depth	26.0

Exceeds BIFMA Seating Durability Test to 750 lbs per chair
CAL 133, add \$191 List per chair



3201G
39 lbs



MIDWAY Public Seating

Highback Single Seater with arms
Ottoman and Headrest

Standard Features

- Separate seat and back
- Polyurethane arms or wood arms
- Fully welded 1.25" frame with glides
- Frame in any Spectone color
- Velcro removable back covers
- Replaceable seats
- Velcro strap for Headrest is upholstered in the same fabric as the chair back
- Use in connected layouts at no upcharge
- Arms replaceable in the field
- Ships assembled as 1, 2 or 3 seaters
- Ships 1/carton 19 cu ft

- Ottoman ships 1/carton 5 cu ft

Options

- Polyurethane arms available in Black, Sterling Grey or Taupe (RAL 7006)
- Wood arms in Natural Maple are available in any of 9 standard stains or stain-to-match at no up charge
- For Flex back add suffix FB and \$169 List.
Note: Wall-saving frame is not available when Flex back is specified.
- Connected and freestanding tables
- Removable headrest with Velcro strap
- Antibacterial and antimicrobial fabrics available
- Different fabric on seat and back at no upcharge
- CAL 133

Contact Spec Customer Service to railroad fabrics (specify repeat info and yardage requirement will be provided) and for repeats greater than 5" x 5"



Highback Single Seater with arms

COM 1.6 yds
0.5 yd COM per single seat
1.1 yds COM per single back

MODEL	COM	GR 1	GR 2	GR 3	GR 4	GR 5	GR 6
3201H	1025	1125	1157	1223	1323	1397	1526

Dimensions (inches)

	seat H	18.0	seat W	20.5	arm H	26.0
total H	46.0	total W	23.75	depth	25.0	

Exceeds BIFMA Seating Durability Test to 500 lbs per chair
CAL 133, add \$140 List per chair



3201H
39 lbs

Ottoman and Headrest

0.5 yd COM per ottoman
0.5 yd COM per headrest

MODEL	COM	GR 1	GR 2	GR 3	GR 4	GR 5	GR 6
3230F	367	400	412	432	466	491	534
3200HR	79	106	115	135	162	183	214

Ottoman Dimensions (inches)

H	11.5	W	19.25	depth	12.25
---	------	---	-------	-------	-------

CAL 133, add \$39 List per ottoman / \$39 List per headrest



3230F
12 lbs



3200HR
1 lbs



MIDWAY Public Seating

Highback Bariatric Single Seater with arms

Standard Features

- Separate seat and back
- Polyurethane arms or wood arms
- Fully welded 1.25" frame with glides
- Frame in any Spectone color
- Velcro removable back covers
- Replaceable seats
- Use in connected layouts at no upcharge
- Arms replaceable in the field
- Bariatric seating cannot connect to bariatric seating
- Ships assembled as 1, 2 or 3 seaters
- Baratric Highback ships 1/carton 26 cu ft

Options

- Polyurethane arms available in Black, Sterling Grey or Taupe (RAL 7006)
- Wood arms in Natural Maple are available in any of 9 standard stains or stain-to-match at no up charge
- Connected and freestanding tables
- Removable headrest with Velcro strap
- Antibacterial and antimicrobial fabrics available
- Different fabric on seat and back at no upcharge
- CAL 133

Contact Spec Customer Service to railroad fabrics (specify repeat info and yardage requirement will be provided) and for repeats greater than 5" x 5"



Highback Bariatric Single Seater with arms

COM 3.0 yds
0.8 yd COM per single seat
2.2 yds COM per single back

MODEL	COM	GR 1	GR 2	GR 3	GR 4	GR 5	GR 6
3201GH	1224	1389	1445	1554	1721	1848	2050

Dimensions (inches)

seat H	18.0	seat W	30.0	arm H	26.0
total H	46.0	total W	32.75	depth	26.0

Exceeds BIFMA Seating Durability Test to 500 lbs per chair
CAL 133, add \$203 List per chair



3201GH
41 lbs



Pricing August 2017
Discount 57.7% from List prices



SIN 711-16

MIDWAY Public Seating

Easy Access Hip Single Seater with arms

Standard Features

- Separate seat and back
- Polyurethane arms or wood arms
- Fully welded 1.25" frame with glides
- Frame in any Spectone color
- 24" seat height, no seat pitch (level)
- Footrest which assists entering/exiting chair
- Velcro removable back covers
- Replaceable seats
- Arms replaceable in the field
- Ships assembled
- Ships 1/carton 19 cu ft

Options

- Polyurethane arms available in Black, Sterling Grey or Taupe (RAL 7006)
- Wood arms in Natural Maple are available in any of 9 standard stains or stain-to-match at no up charge
- Antibacterial and antimicrobial fabrics available
- Different fabric on seat and back at no upcharge
- CAL 133

Contact Spec Customer Service to railroad fabrics (specify repeat info and yardage requirement will be provided) and for repeats greater than 5" x 5"



Easy Access Hip Single Seater with arms

COM 1.5 yds
0.5 yd COM per single seat
1.0 yd COM per single back

MODEL	COM	GR 1	GR 2	GR 3	GR 4	GR 5	GR 6
3231	1015	1120	1155	1221	1328	1407	1511

Dimensions (inches)

seat H	24.0	seat W	20.5	arm H	32.0
total H	42.0	total W	23.75	depth	26.0

Exceeds BIFMA Seating Durability Test to 500 lbs per chair
CAL 133, add \$112 List per chair



3231
40 lbs



MIDWAY Public Seating

Freestanding Lounge Tables
Corner and Spacer Connecting Tables

Standard Features

- Tops in laminate or veneer
- Select laminate tops from 15 standard laminates or choose any standard Wilsonart, Nevamar, Formica, Arborite and Pionite matte finish laminates at no upcharge.
- Freestanding lounge tables available with PVC Flat (PVF), 2mm (2MM) or hardwood (HB) edge
- Connecting table tops available with PVC Flat (PVF) edge, Self edge (SE) or hardwood (HB) edge
- 9 standard veneer and hardwood edge stains. Stain-to-match available at no upcharge.
- Fully welded frame with 1.25" steel legs
- Frame in any Spectone color
- Tops utilize Nu Green earth friendly core
- Glides
- 18" height

Options

- Non-standard laminates, contact Spec for pricing
- Custom size spacer tables for restricted spaces
- Other sizes may be available

Radius Corner Tables are recommended for open areas

Freestanding Lounge Tables

Model	Laminate PVF/SE/2MM	Laminate HB Edge	Veneer HB Edge	Weight	Cu.Ft.
32 - 24 x 24 SQ	637	819	963	28	7.2
32 - 24 x 48 RE	788	988	1191	48	18
32 - 30 x 30 SQ	737	869	1024	43	13.5
32 - 24 DIA	608	944	1135	26	7.2
32 - 30 DIA	705	1036	1232	40	13.5



Corner and Spacer Connecting Tables

Model	Laminate PVF/SE	Weight	Cu.Ft.
32RC - 26 x 26 <i>Radius Corner Table</i>	657	26	2
32SC - 26 x 26 <i>Square Corner Table</i>	657	26	2
32TC45 - 19 x 23 <i>45 degree Corner Table</i>	657	19	2
32ST - 19 x 21 <i>Spacer or End Table</i>	506	19	2

