

POST LEGS TABLES



PLACING AN ORDER IS EASY

PRODUCT CODE

2430 RE P LO

Size
Width x Length

Top Shape

- D : Round
- SQ : Square
- RE : Rectangle
- RT : Racetrack
- B : Bullet
- H : Halfmoon
- TP : Trapezoid

- C90 : Radius
- CRC90 : Crescent (*connector*)
- BT : Boatshape
- BTA : Boatshape Arc

Series
Post

Base

- PL : Post Legs/29" High
- PLO : Oval Post Legs/29" High
- PL18 : Post Leg/18" High
- PLO18 : Oval Post Legs/18" High



OPTIONS

CASTERS

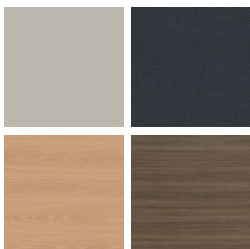


FOLDING



FINISHES

LAMINATE



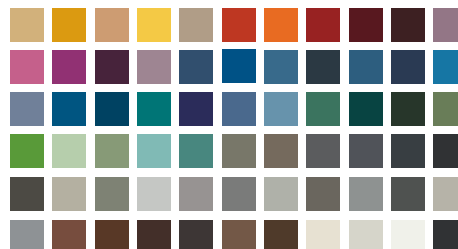
Select from 15 standard laminates or choose any standard Wilsonart, Nevamar, Formica, Arborite and Pionite matte finish laminates at no upcharge

VENEER



Select from one of our 9 standard wood stains or stain-to-match at no upcharge

BASE



Select from one of our 76 standard Spectone colors

EDGE



Check out our website for a complete list of edge profiles.



POST LEGS TABLES

OCCASIONAL AND LOUNGE

MODEL	BASES		TOP SPECIFICATIONS						OPTIONS	LBS
	Code	Qty.	For Laminate Top			For Veneer Top				
			SE PVF 2MM	HF HB	HBV HBVR HBG	HF2 HB2 HKN4 HKNR4 HBG2	HF HB HBV HBVR HBG	HF2 HB2 HKN4 HKNR4 HBG2		
<i>Round</i>										
24D	PL18	4	531	822	855	943	991	1082		37
	PL018	4	571	862	895	983	1031	1122		37
30D	PL18	4	614	904	943	1120	1075	1209		47
	PL018	4	654	944	983	1160	1115	1249		47
36D	PL18	4	695	1115	1188	1333	1378	1564		58
	PL018	4	735	1155	1228	1373	1418	1604		58
42D	PL18	4	927	1399	1498	1715	1737	1993		76
	PL018	4	967	1439	1538	1755	1777	2033		76
<i>Square</i>										
18 x 18SQ	PL18	4	546	715	746	802	841	977		34
	PL018	4	586	755	786	842	881	1017		34
24 x 24SQ	PL18	4	554	715	746	802	841	977		41
	PL018	4	594	755	786	842	881	1017		41
30 x 30SQ	PL18	4	643	759	802	947	895	1082		51
	PL018	4	683	799	842	987	935	1122		51
36 x 36SQ	PL18	4	712	894	943	1115	1120	1284		62
	PL018	4	752	934	983	1155	1160	1324		62



STANDARD FEATURES

- Select from 15 standard laminates or choose any standard Wilsonart, Nevamar, Formica, Arborite and Pionite matte finish laminates at no upcharge. For other laminate please contact the factory for pricing.
- 9 standard veneer and hardwood edge stains. Stain-to-match available at no upcharge.
- Bases available in any Spectone color.
- Standard table height 18".
- All bases are standard with floor leveling glides.
- PL is constructed from 2.5" dia round steel tube, PLO is constructed from 3.5" x 2.5" OD oval steel tube.

OPTIONS

- Custom heights available.

HOW TO ORDER

1. Select Model
2. Select Base
3. Select Edge Style
4. Select Top Finish
5. Select Edge Finish
6. Select Base Finish

Example: 24D - PL18 - PVF
 MODEL | BASE | EDGE



POST LEGS TABLES OCCASIONAL AND LOUNGE

MODEL	BASES		TOP SPECIFICATIONS						OPTIONS	LBS
	<i>Code</i>	<i>Qty.</i>								
			<i>SE</i>	<i>HF</i>	<i>HBV</i>	<i>HF2</i>	<i>HF</i>	<i>HF2</i>		
			<i>PVF</i>	<i>HB</i>	<i>HBVR</i>	<i>HB2</i>	<i>HB</i>	<i>HB2</i>		
			<i>2MM</i>		<i>HGG</i>	<i>HKN4</i>	<i>HBV</i>	<i>HKN4</i>		
						<i>HKNR4</i>	<i>HBVR</i>	<i>HKNR4</i>		
						<i>HGG2</i>	<i>HGG</i>	<i>HGG2</i>		
<i>Rectangle</i>										
24 x 36RE	PL18	4	634	742	780	836	879	986		50
	PL018	4	674	782	820	876	919	1026		50
24 x 42RE	PL18	4	689	862	907	990	1039	1187		58
	PL018	4	729	902	947	1030	1079	1227		58
24 x 48RE	PL18	4	689	862	907	990	1039	1187		58
	PL018	4	729	902	947	1030	1079	1227		58
30 x 36RE	PL18	4	712	836	881	953	1005	1133		56
	PL018	4	752	876	921	993	1045	1173		56
30 x 42RE	PL18	4	728	968	1023	1117	1187	1368		66
	PL018	4	768	1008	1063	1157	1227	1408		66
30 x 48RE	PL18	4	728	968	1023	1117	1187	1368		66
	PL018	4	768	1008	1063	1157	1227	1408		66



2448RE-PL18

STANDARD FEATURES

- Select from 15 standard laminates or choose any standard Wilsonart, Nevamar, Formica, Arborite and Pionite matte finish laminates at no upcharge. For other laminate please contact the factory for pricing.
- 9 standard veneer and hardwood edge stains. Stain-to-match available at no upcharge.
- Bases available in any Spectone color.
- Standard table height 18".
- All bases are standard with floor leveling glides.
- PL is constructed from 2.5" dia round steel tube, PLO is constructed from 3.5" x 2.5" OD oval steel tube.

OPTIONS

- Custom heights available.

HOW TO ORDER

1. Select Model
2. Select Base
3. Select Edge Style
4. Select Top Finish
5. Select Edge Finish
6. Select Base Finish

Example: 2448RE - PL18 - PVF





POST LEGS TABLES GENERAL PURPOSE

MODEL	BASES		TOP SPECIFICATIONS						OPTIONS				LBS	
	Code	Qty.	For Laminate Top			For Veneer Top			FLIP TOP (FT)	FOLD (FL)	CASTERS			WHEELS (WB)
			SE PVF 2MM	HF HB	HBV HBVR HBG	HF2 HB2 HKNR4 HBG2	HF HB HBV HBVR HBG	HF2 HB2 HKNR4 HBG2					HARD (HC)	
<i>Round</i>														
24D	PL	4	531	822	855	943	991	1082	-	-	80	160	-	41
	PLO	4	571	862	895	983	1031	1122	-	-	80	160	-	37
30D	PL	4	614	904	943	1120	1075	1209	-	-	80	160	-	51
	PLO	4	654	944	983	1160	1115	1249	-	-	80	160	-	47
36D	PL	4	695	1115	1188	1333	1378	1564	-	-	80	160	-	62
	PLO	4	735	1155	1228	1373	1418	1604	-	-	80	160	-	58
42D	PL	4	927	1399	1498	1715	1737	1993	-	-	80	160	-	76
	PLO	4	967	1439	1538	1755	1777	2033	-	-	80	160	-	72
48D	PL	4	947	1578	1687	1796	2181	2509	-	-	80	160	-	92
	PLO	4	987	1618	1727	1836	2221	2549	-	-	80	160	-	88
54D	PL	4	1183	2113	2284	2449	2640	3062	-	504	80	160	-	110
	PLO	4	1223	2153	2324	2489	2680	3102	-	-	80	160	-	106
60D	PL	4	1221	2278	2460	2600	3160	3683	-	504	80	160	-	129
	PLO	4	1261	2318	2500	2640	3200	3723	-	-	80	160	-	125

*Folding tables available with PVC Flat (PVF) edge only.



2448RE-PL



2448RE-PLO

STANDARD FEATURES

- Select from 15 standard laminates or choose any standard Wilsonart, Nevamar, Formica, Arborite and Pionite matte finish laminates at no upcharge. For other laminate please contact the factory for pricing.
- 9 standard veneer and hardwood edge stains. Stain-to-match available at no upcharge.
- Bases available in any Spectone color.
- Standard table height 29".
- All bases are standard with floor leveling glides.
- PL is constructed from 2.5" dia round steel tube, PLO is constructed from 3.5" x 2.5" OD oval steel tube.

OPTIONS

- Custom heights available.

HOW TO ORDER

1. Select Model
2. Select Base
3. Select Edge Style
4. Select Options
5. Select Top Finish
6. Select Edge Finish
7. Select Base Finish

Example: 24D - PL - PVF -





POST LEGS TABLES GENERAL PURPOSE

MODEL	BASES		TOP SPECIFICATIONS						OPTIONS				LBS	
	Code	Qty.	For Laminate Top			For Veneer Top			FLIP TOP (FT)	FOLD (FL)	CASTERS			WHEELS (WB)
			SE PVF 2MM	HF HB	HBV HBVR HBG	HF2 HB2 HKN4 HKNR4 HBG2	HF HB HBV HBVR HBG	HF2 HB2 HKN4 HKNR4 HBG2					HARD (HC)	
<i>Square</i>														
24 x 24SQ	PL	4	554	715	746	802	841	977	-	-	80	160	-	41
	PLO	4	594	755	786	842	881	1017	-	-	80	160	-	37
30 x 30SQ	PL	4	643	759	802	947	895	1082	-	-	80	160	-	51
	PLO	4	683	799	842	987	935	1122	-	-	80	160	-	47
36 x 36SQ	PL	4	712	894	943	1115	1120	1284	-	-	80	160	-	58
	PLO	4	752	934	983	1155	1160	1324	-	-	80	160	-	58
42 x 42SQ	PL	4	940	1203	1284	1366	1423	1645	-	504	80	160	-	76
	PLO	4	980	1243	1324	1406	1463	1685	-	-	80	160	-	72
48 x 48SQ	PL	4	1065	1296	1382	1420	1729	2016	-	504	80	160	-	92
	PLO	4	1105	1336	1422	1460	1769	2056	-	-	80	160	-	88
54 x 54SQ	PL	5	1281	1791	1925	2079	2164	2537	-	630	100	200	-	116
	PLO	5	1331	1841	1975	2129	2214	2587	-	-	100	200	-	111
60 x 60SQ	PL	5	1306	1879	2019	2175	2555	3007	-	630	100	200	-	135
	PLO	5	1356	1929	2069	2225	2605	3057	-	-	100	200	-	130

*Folding tables available with PVC Flat (PVF) edge only.



2448RE-PL



2448RE-PLO

STANDARD FEATURES

- Select from 15 standard laminates or choose any standard Wilsonart, Nevamar, Formica, Arborite and Pionite matte finish laminates at no upcharge. For other laminate please contact the factory for pricing.
- 9 standard veneer and hardwood edge stains. Stain-to-match available at no upcharge.
- Bases available in any Spectone color.
- Standard table height 29".
- All bases are standard with floor leveling glides.
- PL is constructed from 2.5" dia round steel tube, PLO is constructed from 3.5" x 2.5" OD oval steel tube.

OPTIONS

- Custom heights available.

HOW TO ORDER

1. Select Model
2. Select Base
3. Select Edge Style
4. Select Options
5. Select Top Finish
6. Select Edge Finish
7. Select Base Finish

Example: 2424SQ - PL - PVF -





POST LEGS TABLES

GENERAL PURPOSE

MODEL	BASES		TOP SPECIFICATIONS						OPTIONS				LBS	
	Code	Qty.	For Laminate Top			For Veneer Top			FLIP TOP (FT)	FOLD (FL)	CASTERS			WHEELS (WB)
			SE PVF 2MM	HF HB	HBV HBVR HBG	HF2 HB2 HKN4 HBKNR4 HBG2	HF HB HBV HBVR HBG	HF2 HB2 HKN4 HBKNR4 HBG2					HARD (HC)	
<i>Rectangle</i>														
24 x 30RE	PL	4	634	742	780	836	879	986	-	-	80	160	-	50
	PLO	4	674	782	820	876	919	1026	-	-	80	160	-	46
24 x 36RE	PL	4	634	742	780	836	879	986	-	-	80	160	-	50
	PLO	4	674	782	820	876	919	1026	-	-	80	160	-	46
24 x 42RE	PL	4	689	862	907	990	1039	1187	-	-	80	160	-	58
	PLO	4	729	902	947	1030	1079	1227	-	-	80	160	-	54
24 x 48RE	PL	4	689	862	907	990	1039	1187	-	-	80	160	-	58
	PLO	4	729	902	947	1030	1079	1227	-	-	80	160	-	54
24 x 54RE	PL	4	736	992	1048	1143	1213	1395	-	-	80	160	-	66
	PLO	4	776	1032	1088	1183	1253	1435	-	-	80	160	-	62
24 x 60RE	PL	4	736	992	1048	1143	1213	1395	-	504	80	160	-	66
	PLO	4	776	1032	1088	1183	1253	1435	-	-	80	160	-	62
24 x 66RE	PL	4	859	1164	1236	1350	1425	1647	-	504	80	160	-	81
	PLO	4	899	1204	1276	1390	1465	1687	-	-	80	160	-	76
24 x 72RE	PL	5	955	1260	1332	1446	1521	1743	-	630	100	200	-	81
	PLO	5	1005	1310	1382	1496	1571	1793	-	-	100	200	-	76

*Folding tables available with PVC Flat (PVF) edge only.



2448RE-PL



2448RE-PLO

STANDARD FEATURES

- Select from 15 standard laminates or choose any standard Wilsonart, Nevamar, Formica, Arborite and Pionite matte finish laminates at no upcharge. For other laminate please contact the factory for pricing.
- 9 standard veneer and hardwood edge stains. Stain-to-match available at no upcharge.
- Bases available in any Spectone color.
- Standard table height 29".
- All bases are standard with floor leveling glides.
- PL is constructed from 2.5" dia round steel tube, PLO is constructed from 3.5" x 2.5" OD oval steel tube.

OPTIONS

- Custom heights available.

HOW TO ORDER

1. Select Model
2. Select Base
3. Select Edge Style
4. Select Options
5. Select Top Finish
6. Select Edge Finish
7. Select Base Finish

Example: 2430RE - PL - PVF -





POST LEGS TABLES

GENERAL PURPOSE

MODEL	BASES		TOP SPECIFICATIONS						OPTIONS				LBS	
	Code	Qty.	For Laminate Top			For Veneer Top			FLIP TOP (FT)	FOLD (FL)	CASTERS			WHEELS (WB)
			SE PVF 2MM	HF HB	HBV HBVR HBG	HF2 HB2 HKNR4 HBG2	HF HB HBV HBVR HBG	HF2 HB2 HKNR4 HBG2					HARD (HC)	
<i>Rectangle</i>														
30 x 36RE	PL	4	712	836	881	953	1005	1133	-	-	80	160	-	56
	PLO	4	752	876	921	993	1045	1173	-	-	80	160	-	52
30 x 42RE	PL	4	728	968	1023	1117	1187	1368	-	-	80	160	-	66
	PLO	4	768	1008	1063	1157	1227	1408	-	-	80	160	-	62
30 x 48RE	PL	4	728	968	1023	1117	1187	1368	-	-	80	160	-	66
	PLO	4	768	1008	1063	1157	1227	1408	-	-	80	160	-	62
30 x 54RE	PL	4	776	1103	1177	1311	1390	1616	-	-	80	160	-	77
	PLO	4	816	1143	1217	1351	1430	1656	-	-	80	160	-	73
30 x 60RE	PL	4	776	1103	1177	1311	1390	1616	-	504	80	160	-	77
	PLO	4	816	1143	1217	1351	1430	1656	-	-	80	160	-	73
30 x 66RE	PL	4	922	1186	1273	1410	1488	1737	-	504	80	160	-	93
	PLO	4	962	1226	1313	1450	1528	1777	-	-	80	160	-	88
30 x 72RE	PL	5	1065	1410	1498	1674	1765	2040	-	630	100	200	-	93
	PLO	5	1115	1460	1548	1724	1815	2090	-	-	100	200	-	88
30 x 78RE	PL	5	1251	1557	1660	1864	1972	2288	-	630	100	200	-	104
	PLO	5	1301	1607	1710	1914	2022	2338	-	-	100	200	-	99
30 x 84RE	PL	5	1251	1557	1660	1864	1972	2288	-	630	100	200	-	104
	PLO	5	1301	1607	1710	1914	2022	2338	-	-	100	200	-	99
30 x 90RE	PL	5	1269	1741	1864	2054	2183	2543	-	630	100	200	-	114
	PLO	5	1319	1791	1914	2104	2233	2593	-	-	100	200	-	109
30 x 96RE	PL	6	1365	1837	1960	2150	2279	2639	-	-	120	240	-	114
	PLO	6	1425	1897	2020	2210	2339	2699	-	-	120	240	-	109



2448RE-PL



2448RE-PLO

STANDARD FEATURES

- Select from 15 standard laminates or choose any standard Wilsonart, Nevamar, Formica, Arborite and Pionite matte finish laminates at no upcharge. For other laminate please contact the factory for pricing.
- 9 standard veneer and hardwood edge stains. Stain-to-match available at no upcharge.
- Bases available in any Spectone color.
- Standard table height 29".
- All bases are standard with floor leveling glides.
- PL is constructed from 2.5" dia round steel tube, PLO is constructed from 3.5" x 2.5" OD oval steel tube.

OPTIONS

- Custom heights available.

HOW TO ORDER

1. Select Model
2. Select Base
3. Select Edge Style
4. Select Options
5. Select Top Finish
6. Select Edge Finish
7. Select Base Finish

Example: 3036RE - PL - PVF -





POST LEGS TABLES GENERAL PURPOSE

MODEL	BASES		TOP SPECIFICATIONS						OPTIONS				LBS	
	Code	Qty.	For Laminate Top			For Veneer Top			FLIP TOP (FT)	FOLD (FL)	CASTERS			WHEELS (WB)
			SE PVF 2MM	HF HB	HBV HBVR HBG	HF2 HB2 HKNR4 HBG2	HF HB HBV HBVR HBG	HF2 HB2 HKNR4 HBG2					HARD (HC)	
<i>Rectangle</i>														
36 x 42RE	PL	4	811	992	1061	1154	1228	1416	-	-	80	160	-	75
	PLO	4	851	1032	1101	1194	1268	1456	-	-	80	160	-	71
36 x 48RE	PL	4	832	1086	1160	1273	1348	1569	-	-	80	160	-	75
	PLO	4	872	1126	1200	1313	1388	1609	-	-	80	160	-	71
36 x 60RE	PL	4	914	1267	1357	1499	1590	1866	-	-	80	160	-	87
	PLO	4	954	1307	1397	1539	1630	1906	-	-	80	160	-	83
36 x 66RE	PL	4	984	1353	1456	1614	1713	2016	-	-	80	160	-	106
	PLO	4	1024	1393	1496	1654	1753	2056	-	-	80	160	-	101
36 x 72RE	PL	5	1113	1498	1595	1824	1934	2263	-	-	100	200	-	106
	PLO	5	1163	1548	1645	1874	1984	2313	-	-	100	200	-	101
36 x 78RE	PL	5	1392	1803	1931	2128	2260	2643	-	-	100	200	-	119
	PLO	5	1442	1853	1981	2178	2310	2693	-	-	100	200	-	114
36 x 84RE	PL	5	1392	1803	1931	2128	2260	2643	-	-	100	200	-	119
	PLO	5	1442	1853	1981	2178	2310	2693	-	-	100	200	-	114
36 x 90RE	PL	6	1492	2078	2224	2455	2603	3033	-	-	120	240	-	137
	PLO	6	1552	2138	2284	2515	2663	3093	-	-	120	240	-	131
36 x 96RE	PL	6	1492	2078	2224	2455	2603	3033	-	-	120	240	-	137
	PLO	6	1552	2138	2284	2515	2663	3093	-	-	120	240	-	131



2448RE-PL



2448RE-PLO

STANDARD FEATURES

- Select from 15 standard laminates or choose any standard Wilsonart, Nevamar, Formica, Arborite and Pionite matte finish laminates at no upcharge. For other laminate please contact the factory for pricing.
- 9 standard veneer and hardwood edge stains. Stain-to-match available at no upcharge.
- Bases available in any Spectone color.
- Standard table height 29".
- All bases are standard with floor leveling glides.
- PL is constructed from 2.5" dia round steel tube, PLO is constructed from 3.5" x 2.5" OD oval steel tube.

OPTIONS

- Custom heights available.

HOW TO ORDER

1. Select Model
2. Select Base
3. Select Edge Style
4. Select Options
5. Select Top Finish
6. Select Edge Finish
7. Select Base Finish

Example: 3642RE - PL - PVF -





POST LEGS TABLES

GENERAL PURPOSE

MODEL	BASES		TOP SPECIFICATIONS						OPTIONS				LBS	
	Code	Qty.	For Laminate Top			For Veneer Top			FLIP TOP (FT)	FOLD (FL)	CASTERS			WHEELS (WB)
			SE PVF 2MM	HF HB	HBV HBVR HBG	HF2 HB2 HKN4 HKNR4 HBG2	HF HB HBV HBVR HBG	HF2 HB2 HKN4 HKNR4 HBG2					HARD (HC)	
<i>Rectangle</i>														
42 x 78RE	PL	5	1593	1948	2089	2429	2543	2989	-	-	100	200	-	133
	PLO	5	1643	1998	2139	2479	2593	3039	-	-	100	200	-	128
42 x 84RE	PL	5	1593	1948	2089	2429	2543	2989	-	-	100	200	-	133
	PLO	5	1643	1998	2139	2479	2593	3039	-	-	100	200	-	128



2448RE-PL



2448RE-PLO

STANDARD FEATURES

- Select from 15 standard laminates or choose any standard Wilsonart, Nevamar, Formica, Arborite and Pionite matte finish laminates at no upcharge. For other laminate please contact the factory for pricing.
- 9 standard veneer and hardwood edge stains. Stain-to-match available at no upcharge.
- Bases available in any Spectone color.
- Standard table height 29".
- All bases are standard with floor leveling glides.
- PL is constructed from 2.5" dia round steel tube, PLO is constructed from 3.5" x 2.5" OD oval steel tube.

OPTIONS

- Custom heights available.

HOW TO ORDER

1. Select Model
2. Select Base
3. Select Edge Style
4. Select Options
5. Select Top Finish
6. Select Edge Finish
7. Select Base Finish

Example: 3696RE - PL - PVF -





POST LEGS TABLES

GENERAL PURPOSE

MODEL	BASES		TOP SPECIFICATIONS						OPTIONS				LBS	
	Code	Qty.	For Laminate Top			For Veneer Top			FLIP TOP (FT)	FOLD (FL)	CASTERS			WHEELS (WB)
			SE PVF 2MM	HF HB	HBV HBVR HBG	HF2 HB2 HKN4 HKNR4 HBG2	HF HB HBV HBVR HBG	HF2 HB2 HKN4 HKNR4 HBG2					HARD (HC)	
<i>Racetrack</i>														
36 x 54RT	PL	4	960	1425	1532	1728	1807	2092	-	-	80	160	-	87
	PLO	4	1000	1465	1572	1768	1847	2132	-	-	80	160	-	83
36 x 60RT	PL	4	960	1425	1532	1728	1807	2092	-	-	80	160	-	87
	PLO	4	1000	1465	1572	1768	1847	2132	-	-	80	160	-	83
36 x 66RT	PL	4	1091	1578	1695	1902	2087	2441	-	-	80	160	-	100
	PLO	4	1131	1618	1735	1942	2127	2481	-	-	80	160	-	96
36 x 72RT	PL	4	1091	1578	1695	1902	2087	2441	-	-	80	160	-	100
	PLO	4	1131	1618	1735	1942	2127	2481	-	-	80	160	-	96
36 x 78RT	PL	4	1311	1929	2073	2388	2453	2866	-	-	80	160	-	119
	PLO	4	1351	1969	2113	2428	2493	2906	-	-	80	160	-	114
36 x 84RT	PL	5	1407	2025	2169	2484	2549	2962	-	-	100	200	-	119
	PLO	5	1457	2075	2219	2534	2599	3012	-	-	100	200	-	114
36 x 90RT	PL	5	1410	2235	2407	2759	2842	3315	-	-	100	200	-	131
	PLO	5	1460	2285	2457	2809	2892	3365	-	-	100	200	-	126
36 x 96RT	PL	6	1506	2331	2503	2855	2938	3411	-	-	120	240	-	131
	PLO	6	1566	2391	2563	2915	2998	3471	-	-	120	240	-	126



2448RE-PL



2448RE-PLO

STANDARD FEATURES

- Select from 15 standard laminates or choose any standard Wilsonart, Nevamar, Formica, Arborite and Pionite matte finish laminates at no upcharge. For other laminate please contact the factory for pricing.
- 9 standard veneer and hardwood edge stains. Stain-to-match available at no upcharge.
- Bases available in any Spectone color.
- Standard table height 29".
- All bases are standard with floor leveling glides.
- PL is constructed from 2.5" dia round steel tube, PLO is constructed from 3.5" x 2.5" OD oval steel tube.

OPTIONS

- Custom heights available.

HOW TO ORDER

1. Select Model
2. Select Base
3. Select Edge Style
4. Select Options
5. Select Top Finish
6. Select Edge Finish
7. Select Base Finish

Example: 3654RT - PL - PVF -





POST LEGS TABLES

GENERAL PURPOSE

MODEL	BASES		TOP SPECIFICATIONS						OPTIONS				LBS	
	Code	Qty.	For Laminate Top			For Veneer Top			FLIP TOP (FT)	FOLD (FL)	CASTERS			WHEELS (WB)
			SE PVF 2MM	HF HB	HBV HBVR HBG	HF2 HB2 HKN4 HKNR4 HBG2	HF HB HBV HBVR HBG	HF2 HB2 HKN4 HKNR4 HBG2					HARD (HC)	
<i>Racetrack</i>														
42 x 78RT	PL	4	1511	2096	2272	2630	2716	3190	-	-	80	160	-	142
	PLO	4	1551	2136	2312	2670	2756	3230	-	-	80	160	-	138
42 x 84RT	PL	4	1511	2096	2272	2630	2716	3190	-	-	80	160	-	142
	PLO	4	1551	2136	2312	2670	2756	3230	-	-	80	160	-	138
48 x 78RT	PL	4	1515	2347	2546	2862	3060	3601	-	-	80	160	-	142
	PLO	4	1555	2387	2586	2902	3100	3641	-	-	80	160	-	138
48 x 84RT	PL	4	1515	2347	2546	2862	3060	3601	-	-	80	160	-	142
	PLO	4	1555	2387	2586	2902	3100	3641	-	-	80	160	-	138



2448RE-PL



2448RE-PLO

STANDARD FEATURES

- Select from 15 standard laminates or choose any standard Wilsonart, Nevamar, Formica, Arborite and Pionite matte finish laminates at no upcharge. For other laminate please contact the factory for pricing.
- 9 standard veneer and hardwood edge stains. Stain-to-match available at no upcharge.
- Bases available in any Spectone color.
- Standard table height 29".
- All bases are standard with floor leveling glides.
- PL is constructed from 2.5" dia round steel tube, PLO is constructed from 3.5" x 2.5" OD oval steel tube.

OPTIONS

- Custom heights available.

HOW TO ORDER

1. Select Model
2. Select Base
3. Select Edge Style
4. Select Options
5. Select Top Finish
6. Select Edge Finish
7. Select Base Finish

Example: 4278RT - PL - PVF -





POST LEGS TABLES

GENERAL PURPOSE

MODEL	BASES		TOP SPECIFICATIONS						OPTIONS				LBS	
	Code	Qty.	For Laminate Top			For Veneer Top			FLIP TOP (FT)	FOLD (FL)	CASTERS			WHEELS (WB)
			SE PVF 2MM	HF HB	HBV HBVR HBG	HF2 HB2 HKN4 HKNR4 HBG2	HF HB HBV HBVR HBG	HF2 HB2 HKN4 HKNR4 HBG2					HARD (HC)	
<i>Bullet</i>														
30 x 54B	PL	4	876	1343	1438	1607	1658	1939	-	-	80	160	-	77
	PLO	4	916	1383	1478	1647	1698	1979	-	-	80	160	-	73
30 x 60B	PL	4	876	1343	1438	1607	1658	1939	-	-	80	160	-	77
	PLO	4	916	1383	1478	1647	1698	1979	-	-	80	160	-	73
36 x 54B	PL	4	977	1757	1896	2145	2177	2533	-	-	80	160	-	87
	PLO	4	1017	1797	1936	2185	2217	2573	-	-	80	160	-	83
36 x 60B	PL	4	977	1757	1896	2145	2177	2533	-	-	80	160	-	87
	PLO	4	1017	1797	1936	2185	2217	2573	-	-	80	160	-	83
36 x 72B	PL	4	1090	1952	2106	2371	2525	2967	-	-	80	160	-	100
	PLO	4	1130	1992	2146	2411	2565	3007	-	-	80	160	-	96



2448RE-PL



2448RE-PLO

STANDARD FEATURES

- Select from 15 standard laminates or choose any standard Wilsonart, Nevamar, Formica, Arborite and Pionite matte finish laminates at no upcharge. For other laminate please contact the factory for pricing.
- 9 standard veneer and hardwood edge stains. Stain-to-match available at no upcharge.
- Bases available in any Spectone color.
- Standard table height 29".
- All bases are standard with floor leveling glides.
- PL is constructed from 2.5" dia round steel tube, PLO is constructed from 3.5" x 2.5" OD oval steel tube.

OPTIONS

- Custom heights available.

HOW TO ORDER

1. Select Model
2. Select Base
3. Select Edge Style
4. Select Options
5. Select Top Finish
6. Select Edge Finish
7. Select Base Finish

Example: 3054B - PL - PVF -





POST LEGS TABLES

GENERAL PURPOSE

MODEL	BASES		TOP SPECIFICATIONS						OPTIONS				LBS
	Code	Qty.	For Laminate Top			For Veneer Top			FLIP TOP (FT)	FOLD (FL)	CASTERS		
			SE PVF 2MM	HF HB	HBV HBVR HBG	HF2 HB2 HKN4 HKNR4 HBG2	HF HB HBV HBVR HBG	HF2 HB2 HKN4 HKNR4 HBG2					HARD (HC)
<i>Halfmoon</i>													
24 x 48H	PL	4	701	1120	1227	1353	1456	1695	-	-	80	160	58
	PLO	4	741	1160	1267	1393	1496	1735	-	-	80	160	54
30 x 60H	PL	4	876	1501	1646	1789	1969	2309	-	-	80	160	77
	PLO	4	916	1541	1686	1829	2009	2349	-	-	80	160	73
36 x 72H	PL	4	1090	1943	2130	2307	2597	3057	-	-	80	160	100
	PLO	4	1130	1983	2170	2347	2637	3097	-	-	80	160	96
<i>Trapezoid</i>													
30 x 60TP	PL	4	876	1261	1350	1506	1550	1811	-	-	80	160	77
	PLO	4	916	1301	1390	1546	1590	1851	-	-	80	160	73
36 x 72TP	PL	4	1090	1610	1729	1998	2063	2439	-	-	80	160	100
	PLO	4	1130	1650	1769	2038	2103	2479	-	-	80	160	96
<i>Radius (connector)</i>													
24 x 24	24RC90	-	321	585	660	757	776	930	-	-	-	-	17
30 x 30	30RC90	-	414	774	869	975	1030	1238	-	-	-	-	27
<i>Crescent</i>													
30 x 36	3036CRC90-PL	1	570	1128	1199	1255	1431	1628	-	-	-	-	38
36 x 42	3036CRC90-PLO	1	580	1138	1209	1265	1441	1638	-	-	-	-	37
	3642CRC90-PL	1	865	1392	1485	1561	1804	2069	-	-	-	-	51
	3642CRC90-PLO	1	875	1402	1495	1571	1814	2079	-	-	-	-	50



2448RE-PL



2448RE-PLO

STANDARD FEATURES

- Select from 15 standard laminates or choose any standard Wilsonart, Nevamar, Formica, Arborite and Pionite matte finish laminates at no upcharge. For other laminate please contact the factory for pricing.
- 9 standard veneer and hardwood edge stains. Stain-to-match available at no upcharge.
- Bases available in any Spectone color.
- Standard table height 29".
- All bases are standard with floor leveling glides.
- PL is constructed from 2.5" dia round steel tube, PLO is constructed from 3.5" x 2.5" OD oval steel tube.

OPTIONS

- Custom heights available.

HOW TO ORDER

1. Select Model
2. Select Base
3. Select Edge Style
4. Select Options
5. Select Top Finish
6. Select Edge Finish
7. Select Base Finish

Example: 2448H - PL - PVF -





POST LEGS TABLES BOARDROOM

MODEL	BASES		TOP SPECIFICATIONS						OPTIONS	LBS
	Code	Qty.	For Laminate Top			For Veneer Top				
			SE PVF 2MM	HF HB	HBV HBVR HBG	HF2 HB2 HKN4 HKNR4 HBG2	HF HB HBV HBVR HBG	HF2 HB2 HKN4 HKNR4 HBG2		
<i>Rectangle</i>										
42 x 96RE	PL	5	1638	2379	2581	2782	3087	3666		165
	PLO	5	1688	2429	2631	2832	3137	3716		160
	PLH	5	1993	2734	2936	3137	3442	4021		179
48 x 96RE	PL	5	1638	2379	2581	2782	3087	3666		165
	PLO	5	1688	2429	2631	2832	3137	3716		160
	PLH	5	1993	2734	2936	3137	3442	4021		179
48 x 120RE	PLH	6	2435	3394	3621	4111	4184	4861		234
48 x 144RE	PLH	6	2758	4132	4433	4897	4787	5606		268
48 x 168RE	PLH	6	3169	4553	4894	5546	5395	6346		302
60 x 120RE	PLH	6	2830	4265	4577	5060	4946	5799		276
60 x 144RE	PLH	6	3197	4917	5291	5872	5735	6755		318
60 x 168RE	PLH	6	3565	5570	6005	6683	6522	7713		360



4296BTA-PL



4296BTA-PL0



4296BTA-PLH

STANDARD FEATURES

- Select from 15 standard laminates or choose any standard Wilsonart, Nevamar, Formica, Arborite and Pionite matte finish laminates at no upcharge. For other laminate please contact the factory for pricing.
- 9 standard veneer and hardwood edge stains. Stain-to-match available at no upcharge.
- Bases available in any Spectone color.
- Standard table height 29".
- All bases are standard with floor leveling glides.
- PL is constructed from 2.5" dia round steel tube, PLO from 3.5" x 2.5" OD oval steel tube, and PLH from 3.5" dia round steel tube.

OPTIONS

- Custom heights available.

HOW TO ORDER

1. Select Model
2. Select Base
3. Select Edge Style
4. Select Top Finish
5. Select Edge Finish
6. Select Base Finish

Example: 4296RE - PL - PVF





POST LEGS TABLES BOARDROOM

MODEL	BASES		TOP SPECIFICATIONS						OPTIONS	LBS
	Code	Qty.	For Laminate Top			For Veneer Top				
			SE PVF 2MM	HF HB	HBV HBVR HBG	HF2 HB2 HKN4 HKNR4 HBG2	HF HB HBV HBVR HBG	HF2 HB2 HKN4 HKNR4 HBG2		
<i>Racetrack</i>										
42 x 96RT	PL	5	1653	2495	2698	3191	3537	4157		165
	PLO	5	1703	2545	2748	3241	3587	4207		160
	PLH	5	2008	2850	3053	3546	3892	4512		179
48 x 96RT	PL	5	1653	2495	2698	3191	3537	4157		165
	PLO	5	1703	2545	2748	3241	3587	4207		160
	PLH	5	2008	2850	3053	3546	3892	4512		179
48 x 120RT	PLH	6	2457	3788	4055	4734	4706	5430		234
48 x 144RT	PLH	6	2784	4441	4770	5610	5415	6293		268
48 x 168RT	PLH	6	3197	5000	5383	6315	6134	7152		302
60 x 120RT	PLH	6	2822	4485	4817	5668	5631	6538		276
60 x 144RT	PLH	6	3229	5301	5712	6765	6519	7615		318
60 x 168RT	PLH	6	3746	6001	6479	7643	7417	8688		360



4296BTA-PL



4296BTA-PLO



4296BTA-PLH

STANDARD FEATURES

- Select from 15 standard laminates or choose any standard Wilsonart, Nevamar, Formica, Arborite and Pionite matte finish laminates at no upcharge. For other laminate please contact the factory for pricing.
- 9 standard veneer and hardwood edge stains. Stain-to-match available at no upcharge.
- Bases available in any Spectone color.
- Standard table height 29".
- All bases are standard with floor leveling glides.
- PL is constructed from 2.5" dia round steel tube, PLO from 3.5" x 2.5" OD oval steel tube, and PLH from 3.5" dia round steel tube.

OPTIONS

- Custom heights available.

HOW TO ORDER

1. Select Model
2. Select Base
3. Select Edge Style
4. Select Top Finish
5. Select Edge Finish
6. Select Base Finish

Example: 4296RT - PL - PVF





POST LEGS TABLES BOARDROOM

MODEL	BASES		TOP SPECIFICATIONS						OPTIONS	LBS
	Code	Qty.	For Laminate Top			For Veneer Top				
			SE PVF 2MM	HF HB	HBV HBVR HBG	HF2 HB2 HKN4 HKNR4 HBG2	HF HB HBV HBVR HBG	HF2 HB2 HKN4 HKNR4 HBG2		
<i>Boatshape</i>										
42 x 96BT	PL	5	1653	3064	3328	3600	3983	4321		165
	PLO	5	1703	3114	3378	3650	4033	4371		160
	PLH	5	2008	3419	3683	3955	4338	4676		179
48 x 96BT	PL	5	1653	3064	3328	3600	3983	4321		165
	PLO	5	1703	3114	3378	3650	4033	4371		160
	PLH	5	2008	3419	3683	3955	4338	4676		179
48 x 120BT	PLH	6	2457	4415	4743	5087	5233	5622		234
48 x 144BT	PLH	6	2784	5068	5459	5872	6393	6745		268
48 x 168BT	PLH	6	3197	5695	6147	6624	6866	7416		302
60 x 120BT	PLH	6	2822	5268	5679	6107	6293	6777		276
60 x 144BT	PLH	6	3229	6087	6573	7089	7739	8183		318
60 x 168BT	PLH	6	3746	6868	7433	8030	8333	9020		360



4296BTA-PL



4296BTA-PLO



4296BTA-PLH

STANDARD FEATURES

- Select from 15 standard laminates or choose any standard Wilsonart, Nevamar, Formica, Arborite and Pionite matte finish laminates at no upcharge. For other laminate please contact the factory for pricing.
- 9 standard veneer and hardwood edge stains. Stain-to-match available at no upcharge.
- Bases available in any Spectone color.
- Standard table height 29".
- All bases are standard with floor leveling glides.
- PL is constructed from 2.5" dia round steel tube, PLO from 3.5" x 2.5" OD oval steel tube, and PLH from 3.5" dia round steel tube.

OPTIONS

- Custom heights available.

HOW TO ORDER

1. Select Model
2. Select Base
3. Select Edge Style
4. Select Top Finish
5. Select Edge Finish
6. Select Base Finish

Example: 4296BT - PL - PVF





POST LEGS TABLES BOARDROOM

MODEL	BASES		TOP SPECIFICATIONS						OPTIONS	LBS
	Code	Qty.	For Laminate Top			For Veneer Top				
			SE PVF 2MM	HF HB	HBV HBVR HBG	HF2 HB2 HKN4 HKNR4 HBG2	HF HB HBV HBVR HBG	HF2 HB2 HKN4 HKNR4 HBG2		
<i>Boatshape</i>										
<i>Arc Ends</i>										
42 x 96BTA	PL	5	1798	3519	3781	4053	4434	4774		165
	PLO	5	1848	3569	3831	4103	4484	4824		160
	PLH	5	2153	3874	4136	4408	4789	5129		179
48 x 96BTA	PL	5	1798	3519	3781	4053	4434	4774		165
	PLO	5	1848	3569	3831	4103	4484	4824		160
	PLH	5	2153	3874	4136	4408	4789	5129		179
48 x 120BTA	PLH	6	2600	4869	5195	5538	5684	6074		234
48 x 144BTA	PLH	6	2927	5521	5911	6322	6843	7198		268
48 x 168BTA	PLH	6	3342	6147	6598	7076	7318	7869		302
60 x 120BTA	PLH	6	3001	5835	6242	6673	6854	7340		276
60 x 144BTA	PLH	6	3408	6651	7139	7655	8303	8746		318
60 x 168BTA	PLH	6	3927	7433	7998	8593	8896	9584		360



4296BTA-PL



4296BTA-PLO



4296BTA-PLH

STANDARD FEATURES

- Select from 15 standard laminates or choose any standard Wilsonart, Nevamar, Formica, Arborite and Pionite matte finish laminates at no upcharge. For other laminate please contact the factory for pricing.
- 9 standard veneer and hardwood edge stains. Stain-to-match available at no upcharge.
- Bases available in any Spectone color.
- Standard table height 29".
- All bases are standard with floor leveling glides.
- PL is constructed from 2.5" dia round steel tube, PLO from 3.5" x 2.5" OD oval steel tube, and PLH from 3.5" dia round steel tube.

OPTIONS

- Custom heights available.

HOW TO ORDER

1. Select Model
2. Select Base
3. Select Edge Style
4. Select Top Finish
5. Select Edge Finish
6. Select Base Finish

Example: 4296BTA - PL - PVF

