



Pricing August 2017
Discount 57.7% from List prices



SNOWBALL 2 Public Seating



PLACING AN ORDER IS EASY

PRODUCT CODE

18 51

Series

18 : Snowball 2

Chair Type

51 : Four Point/Arms

61 : Four Point/No Arms

81 : Sled Base/Arms

91 : Sled Base/No Arms

54 : 22"/4-point/Arms

64 : 22"/4-Point/No Arms

53 : 26"/4-Point/Arms

94 : 22"/Sled/No Arms

93 : 26"/Sled/No Arms

52 : Casters/Arms

71 : Stool/Arms

75 : Stool/No Arms

74 : 22"/Stool/Arms

76 : 22"/Stool/No Arms

71E : Hip Chair

74E : 22" Hip Chair



OPTIONS

WALL-SAVING



DURASPEC SEAT



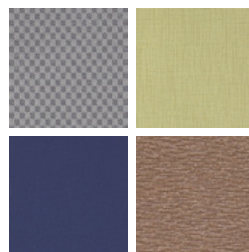
FINISHES

FRAME



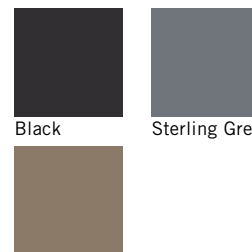
Select from one of our 76 standard Spectone colors

FABRIC



Select fabrics from one of our textile partners

ARMS



Black

Sterling Grey

Taupe



SNOWBALL 2 Public Seating

Four-point and Sled Base

Standard Features

- 0.875" frame
- Seat and back upholstered
- Back has enhanced contours for superior comfort
- Black polyurethane arms, add B to end of model number
- Frame in any Spectone color
- Four-point stacks 10 high with dolly, 6 without dolly
- Sled Base does not stack and ships 1 per carton
- Ships 1/carton 11 cu ft, 2-4/carton 22 cu ft

Contact Spec™ Customer Service to railroad fabrics (specify repeat info and yardage requirement will be provided) and for repeats greater than 5" x 5"



Available on Spec 10 Day Program

Options

- Wall-saving frame on Four-point only, add \$20 List
- Polyurethane arms available in Black (B), Sterling Grey (G) or Taupe RAL 7006 (T)
- Connecting bars for a structured reconfigurable layout, add \$80 List
- Antibacterial and antimicrobial fabrics available
- Different fabric on seat and back at no upcharge
- Tablet Arm available on Snowballs without arms
- CAL 133
- Other glides may be available for an upcharge - call Customer Service to inquire
- DuraSpec seat is available on 18"w and 22"w chairs only - call Customer Service for pricing



Optional wall-saving frame



Optional DuraSpec seat

Snowball 2 – Four-point

SIN 711-19

COM 1.0 yd
0.5 yd COM per single seat
0.5 yd COM per single back

MODEL	COM	GR 1	GR 2	GR 3	GR 4	GR 5	GR 6
1851	330	384	401	435	488	527	579
1861	330	384	401	435	488	527	579

Dimensions (inches)

	seat H	18.0	seat W	18.0	arm H	26.0	total H	33.0
depth	21.5		total W	23.5	total W (no arms)	20.1		

Exceeds BIFMA Seating Durability Test to 500 lbs

CAL 133, add \$58 List

1" extra seat foam, specify and add \$14 List



1851
With arms
16 lbs



1861
Without arms
15 lbs

Snowball 2 – Sled Base

SIN 711-18

COM 1.0 yd
0.5 yd COM per single seat
0.5 yd COM per single back

MODEL	COM	GR 1	GR 2	GR 3	GR 4	GR 5	GR 6
1881	346	397	414	449	501	540	592
1891	346	397	414	449	501	540	592

Dimensions (inches)

	seat H	18.0	seat W	18.0	arm H	26.0	total H	33.0
depth	21.5		total W	23.5	total W (no arms)	20.1		

Exceeds BIFMA Seating Durability Test to 500 lbs

CAL 133, add \$58 List

1" extra seat foam, specify and add \$14 List



1881
With arms
18 lbs



1891
Without arms
17 lbs



SNOWBALL 2 Public Seating

Midsize and Bariatric – Four-point

Standard Features

- 0.875" frame
- Seat and back upholstered
- Back has enhanced contours for superior comfort
- Black polyurethane arms, add B to end of model number
- Frame in any Spectone color
- Four-point stacks 4 high on floor or with dolly
- Ships 1-3/carton 21.24 cu ft for Midsize and 1-3/ carton 24.17 cu ft for Bariatric

Contact Spec Customer Service to railroad fabrics (specify repeat info and yardage requirement will be provided) and for repeats greater than 5" x 5"



Available on Spec 10 Day Program

Options

- Wall-saving frame, add \$20 List
- Polyurethane arms available in Black (B), Sterling Grey (G) or Taupe RAL 7006 (T)
- Connecting bars for a structured reconfigurable layout, add \$80 List
- Antibacterial and antimicrobial fabrics available
- Different fabric on seat and back at no upcharge
- CAL 133
- Other glides may be available for an upcharge - call Customer Service to inquire
- DuraSpec seat is available on 18"w and 22"w chairs only - call Customer Service for pricing



Optional wall-saving frame



Optional DuraSpec seat

Snowball 2 – Midsize – Four-point

SIN 711-19

COM 1.5 yd
0.75 yd COM per single seat
0.75 yd COM per single back

MODEL	COM	GR 1	GR 2	GR 3	GR 4	GR 5	GR 6
1854	386	483	514	577	675	749	845
1864	386	483	514	577	675	749	845

*1864 Not Available on 10 Day Program

Dimensions (inches)

	seat H	18.0	seat W	22.0	arm H	26.0	total H	33.0
depth	22.0	total W	26.9	total W (no arms)	24.0			

Exceeds BIFMA Seating Durability Test to 500 lbs

CAL 133, add \$82 List

1" extra seat foam, specify and add \$21 List



1854
With arms
18 lbs

1864
Without arms
17 lbs

*Not Available on 10 Day Program

Snowball 2 – Bariatric – Four-point

COM 2.0 yd
1.0 yd COM per single seat
1.0 yd COM per single back

MODEL	COM	GR 1	GR 2	GR 3	GR 4	GR 5	GR 6
1853	529	625	659	721	819	890	988

Dimensions (inches)

	seat H	18.0	seat W	26.0	arm H	26.0
total H	33.0	total W	31.0	depth	22.0	

Exceeds BIFMA Seating Durability Test to 500 lbs

CAL 133, add \$82 List

1" extra seat foam, specify and add \$30 List



1853
With arms
23 lbs

SIN 711-19



SNOWBALL 2 Public Seating

Midsize and Bariatric – Sled Base

Standard Features

- 0.875" frame
- Seat and back upholstered
- Back has enhanced contours for superior comfort
- Frame in any Spectone color
- Does not stack
- Ships 1/carton 21 cu ft

Contact Spec Customer Service to railroad fabrics (specify repeat info and yardage requirement will be provided) and for repeats greater than 5" x 5"

Options

- Connecting bars for a structured reconfigurable layout, add \$80 List
- Antibacterial and antimicrobial fabrics available
- Different fabric on seat and back at no upcharge
- Tablet Arm available on Snowballs without arms
- CAL 133
- Other glides may be available for an upcharge - call Customer Service to inquire
- DuraSpec seat is available on 18"w and 22"w chairs only - call Customer Service for pricing



Optional
DuraSpec
seat



Snowball 2 – Midsize – Sled Base

COM 1.5 yd
0.75 yd COM per single seat
0.75 yd COM per single back

MODEL	COM	GR 1	GR 2	GR 3	GR 4	GR 5	GR 6
1894	419	515	548	610	707	781	878

Dimensions (inches)

	seat H	18.0	seat W	22.0	arm H	N/A
total H	33.0	total W	24.0	depth	22.0	

Exceeds BIFMA Seating Durability Test to 500 lbs
CAL 133, add \$82 List
1" extra seat foam, specify and add \$21 List



1894
Without arms
20 lbs

Snowball 2 – Bariatric – Sled Base

COM 2.0 yd
1.0 yd COM per single seat
1.0 yd COM per single back

MODEL	COM	GR 1	GR 2	GR 3	GR 4	GR 5	GR 6
1893	563	659	692	755	851	924	1022

Dimensions (inches)

	seat H	18.0	seat W	26.0	arm H	N/A
total H	33.0	total W	28.0	depth	22.0	

Exceeds BIFMA Seating Durability Test to 500 lbs
CAL 133, add \$82 List
1" extra seat foam, specify and add \$30 List



1893
Without arms
25 lbs



SNOWBALL 2 Public Seating

Casters

Standard Features

- 0.875" frame
- Seat and back upholstered
- Back has enhanced contours for superior comfort
- Black polyurethane arms, add B to end of model number
- Frame in any Spectone color
- Black non-locking casters
- Four-point stacks 10 high with dolly, 6 without dolly
- Ships 1/carton 11 cu ft, 2-3/carton 22 cu ft

Contact Spec Customer Service to railroad fabrics (specify repeat info and yardage requirement will be provided) and for repeats greater than 5" x 5"

Options

- Polyurethane arms available in Black (B), Sterling Grey (G) or Taupe RAL 7006 (T)
- Antibacterial and antimicrobial fabrics available
- Different fabric on seat and back at no upcharge
- Armless and sled base versions not available
- CAL 133
- DuraSpec seat is available on 18"w and 22"w chairs only - call Customer Service for pricing



Optional
DuraSpec
seat



Snowball 2 – Casters

COM 1.0 yd
0.5 yd COM per single seat
0.5 yd COM per single back

MODEL	COM	GR 1	GR 2	GR 3	GR 4	GR 5	GR 6
1852	450	502	519	554	606	645	698

Dimensions (inches)

seat H	18.0	seat W	18.0	arm H	26.0
total H	33.0	total W	23.5	depth	21.5

Exceeds BIFMA Seating Durability Test to 500 lbs
CAL 133, add \$58 List
1" extra seat foam, specify and add \$14 List



1852
With arms
17 lbs



SNOWBALL 2 Public Seating

Stools

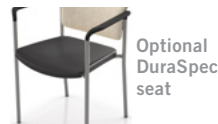
Standard Features

- 0.875" frame
- Seat and back upholstered
- Back has enhanced contours for superior comfort
- Black polyurethane arms, add B to end of model number
- Frame in any Spectone color
- Does not stack
- Ships 1/carton 17 cu ft

Contact Spec Customer Service to railroad fabrics (specify repeat info and yardage requirement will be provided) and for repeats greater than 5" x 5"

Options

- Polyurethane arms available in Black (B), Sterling Grey (G) or Taupe RAL 7006 (T)
- Antibacterial and antimicrobial fabrics available
- Different fabric on seat and back at no upcharge
- Casters, sled base not available
- CAL 133
- Other glides may be available for an upcharge - call Customer Service to inquire
- DuraSpec seat is available on 18"w and 22"w chairs only - call Customer Service for pricing



Snowball 2 – Stools

COM 1.0 yd
0.5 yd COM per single seat
0.5 yd COM per single back

MODEL	COM	GR 1	GR 2	GR 3	GR 4	GR 5	GR 6
1871	440	492	510	544	596	636	686
1875	440	492	510	544	596	636	686

Dimensions (inches)

	seat H	28.0	seat W	18.0	arm H	36.0	total H	43.5
depth	21.5	total W	23.5	total W (no arms)	20.1			

Exceeds BIFMA Seating Durability Test to 500 lbs
CAL 133, add \$58 List
1" extra seat foam, specify and add \$14 List



1871
With arms
21 lbs



1875
Without arms
20 lbs

Snowball 2 – Midsize Stools

COM 1.5 yd
0.75 yd COM per single seat
0.75 yd COM per single back

MODEL	COM	GR 1	GR 2	GR 3	GR 4	GR 5	GR 6
1874	528	625	656	718	816	891	987
1876	528	625	656	718	816	891	987

Dimensions (inches)

	seat H	28.0	seat W	22.0	arm H	36.0	total H	43.5
depth	22.0	total W	26.9	total W (no arms)	24.0			

Exceeds BIFMA Seating Durability Test to 500 lbs
CAL 133, add \$82 List
1" extra seat foam, specify and add \$21 List



1874
With arms
23 lbs



1876
Without arms
22 lbs



SNOWBALL 2 Public Seating

Easy Access Hip Single Seater

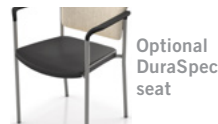
Standard Features

- 0.875" frame
- Seat and back upholstered
- Back has enhanced contours for superior comfort
- Black polyurethane arms, add B to end of model number
- Frame in any Spectone color
- Does not stack
- Ships 1/carton 19 cu ft

Contact Spec Customer Service to railroad fabrics (specify repeat info and yardage requirement will be provided) and for repeats greater than 5" x 5"

Options

- Polyurethane arms available in Black (B), Sterling Grey (G) or Taupe RAL 7006 (T)
- Antibacterial and antimicrobial fabrics available
- Different fabric on seat and back at no upcharge
- Casters, sled base not available
- CAL 133
- Other glides may be available for an upcharge - call Customer Service to inquire
- DuraSpec seat is available on 18"w and 22"w chairs only - call Customer Service for pricing



Snowball 2 – Easy Access Hip Single Seater

COM 1.0 yd
0.5 yd COM per single seat
0.5 yd COM per single back

MODEL	COM	GR 1	GR 2	GR 3	GR 4	GR 5	GR 6
1871E	481	533	552	585	638	678	728

Dimensions (inches)
seat H 24.0 seat W 18.0 arm H 32.0
total H 38.5 total W 23.5 depth 31.0

Exceeds BIFMA Seating Durability Test to 500 lbs
CAL 133, add \$58 List
1" extra seat foam, specify and add \$14 List



1871E
With arms
21 lbs

Snowball 2 – Midsize Easy Access Hip Single Seater

COM 1.5 yd
0.75 yd COM per single seat
0.75 yd COM per single back

MODEL	COM	GR 1	GR 2	GR 3	GR 4	GR 5	GR 6
1874E	575	672	703	765	863	938	1034

Dimensions (inches)
seat H 24.0 seat W 22.0 arm H 32.0
total H 38.5 total W 26.9 depth 31.0

Exceeds BIFMA Seating Durability Test to 500 lbs
CAL 133, add \$82 List
1" extra seat foam, specify and add \$21 List



1874E
With arms
23 lbs



Pricing August 2017
Discount 57.7% from List prices



SIN 711-19

SNOWBALL 2 Public Seating

Dolly

Standard Features

- Black finish only
- 2" black swivel casters
- Standard Dolly stacks 10 chairs
- Midsize Dolly stacks 4 chairs
- Bariatric Dolly stacks 4 chairs
- Ships 1/carton 17 cu ft

Options

- Please specify if Dolly is for chairs with wall-saving frame



Available on Spec 10 Day Program



Snowball 2 – Dolly

DESCRIPTION	MODEL	PRICE
Standard	1899	343
22" Midsize	1899M	491
26" Bariatric	1899G	491

Dimensions (inches)

Standard		Midsize / Bariatric	
height	36.5	height	36.5
width	21.0	width	23.0
depth	31.0	depth	42.0



**1899
Standard**
18 lbs



**1899 G&M
Midsize & Bariatric**
24 lbs



SNOWBALL 2 Public Seating

Connected and Tables

To order connected Snowballs

- Select and price the Snowballs required for your configuration
- Select and price the corner, spacer and end tables required
- Add Snowball connecting bars (between chairs only)
- Do not add connecting bars for tables (they are part of the table)
- Send a drawing with your order or call Spec for assistance

Snowball Tables

- Table top is 3/4" thick
- Self Edge, PVC Flat and 2mm edge available. PVC Flat edge and 2 mm Bio edge available in 38 solid colors. 2mm PVC edge available in wood grain to match 9 standard stains.
- Select laminate tops from 15 standard laminates or choose any standard Wilsonart, Nevamar, Formica, Arborite and Pionite matte finish laminates at no upcharge.

Connecting bars and tables can be retrofitted, allowing you to change configurations later or create new configurations from your present Snowballs

Connecting bars can be added to any Snowball chair, including Bariatric and Midsize

Connecting bars and table frame bars are finished in the same color as the color of the chair frames

Connecting bars are fastened to the underside of the Snowball chair frame at the front and back



Snowball 2 – Connected and Tables



DESCRIPTION	Corner Table	Spacer Table	Mini Spacer Table	End Table*	Connecting Bars
MODEL	18RC	18ST	18MT	18ET	18CON
DIMENSIONS (inches)	25 x 25	17 x 17	4.5 x 14.5	17 x 17	N/A
PRICE	330	226	135	235	80

*End table is handed, provide layout



SNOWBALL 2 Public Seating

Tablet Arms and Wire Basket

Tablet Arm

- Fits any Snowball, freestanding or within a configuration
- Standard or laptop size available
- Right and left handed versions (defined when sitting in chair), add TR for right handed or TL for left handed to model number
- Laminated on both sides, standard in Wilsonart Dove Grey D-92-60 with flat black PVC edge.
For other laminate please contact the factory for pricing
- Tablet constructed of 3/4" Nu Green core
- Snowball with Tablet Arm is standard with no arm on opposite side
- Add price of Tablet Arm to your Snowball selection

Note: We do not recommend stacking Snowballs that have tablet arms

Wire Basket

- Add to any 18" wide Snowball
- Black
- Removable



Snowball 2 – Tablet Arms and Wire Basket



DESCRIPTION
MODEL
PRICE

Standard Tablet Arm
TR (right) or TL (left)
231

Laptop Tablet Arm
LTR (right) or LTL (left)
260

Wire Basket
WB
57

Dimensions (inches)

height 27.5
width 12.75
total W 24.5
length 24.0
tablet extends 6" from seat

height 27.5
width 16.0
total W 24.5
length 24.75
tablet extends 7" from seat



Pricing August 2017
Discount 57.7% from List prices



SIN 711-19

SNOWBALL 2 Public Seating

10 Day Program

Standard Features

- Black polyurethane arms
- Back with enhanced contours for superior comfort
- Black or silver frame finish
- A selection of fabrics and vinyls can be seen on our website under 10 Day Quickship

Options

- Snowball Dolly stacks regular width four-point Snowballs up to 10 high

For information on the 10 Day Program guarantee and terms and conditions, visit our website and go to 10 Day Quickship, Terms & Conditions tab.

Snowball 2

COM 1.0 yd
0.5 yd COM per single seat
0.5 yd COM per single back

MODEL	COM	GR 1	GR 2	GR 3	GR 4	GR 5	GR 6
1851	330	384	401	435	488	527	579
1861	330	384	401	435	488	527	579
1854	386	483	514	577	675	749	845



1851
With arms
16 lbs



1861
Without arms
15 lbs



1854
With arms
18 lbs

Snowball 2 – Dolly

DESCRIPTION	MODEL	PRICE
Standard	1899	343
22" Midsize	1899M	491

Dimensions (inches)

	Standard	Midsize
height	36.5	36.5
width	21.0	23.0
depth	31.0	42.0



1899
Standard
18 lbs



1899M
Midsize
24 lbs

