



Pricing August 2017
Discount 57.7% from List prices



SNOWBALL 3 Public Seating



PLACING AN ORDER IS EASY

PRODUCT CODE

19 01

Series

19 : Snowball 3

Chair Type

01 : Four Point/Arms	14 : 22"/4-Point/No Arms	21 : Stool/Arms	24E : 22" Hip Chair
11 : Four Point/No Arms	03 : 26"/4-Point/Arms	51 : Stool/No Arms	
31 : Sled Base/Arms	44 : 22"/Sled/No Arms	24 : 22"/Stool/Arms	
41 : Sled Base/No Arms	43 : 26"/Sled/No Arms	26 : 22"/Stool/No Arms	
04 : 22"/4-point/Arms	02 : Casters/Arms	21E : Hip Chair	



OPTIONS

WALL-SAVING



DURASPEC SEAT



WOOD BACK OPTIONS



Cutout A



Cutout B



Cutout C



Cutout D



Cutout E



Custom Engraving*



Custom Cutout*

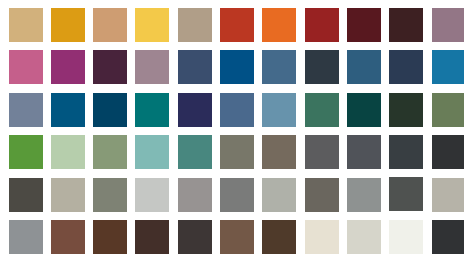


Custom Decal*

*Custom engravings, cutouts and decals are available. Please call for pricing.

FINISHES

FRAME



Select from one of our 76 standard Spectone colors

FABRIC



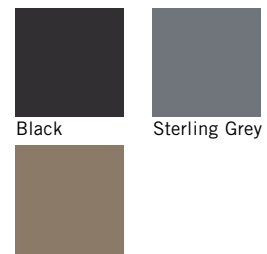
Select fabrics from one of our textile partners

BACK STAIN



Select from one of our 9 standard wood stains or stain-to-match at no upcharge

ARMS



Taupe



SNOWBALL 3 Public Seating

Four-point and Sled Base

Standard Features

- 0.875" frame
- Upholstered seat and wood back
- Seat and/or back in Natural Maple in any of 9 standard stains or stain-to-match at no upcharge
- Choice of 5 back cut-outs
- Black polyurethane arms, add B to end of model number
- Frame in any Spectone color
- Four-point stacks 10 high with dolly, 6 without dolly
- Sled Base does not stack and ships 1 per carton
- Ships 1/carton 11 cu ft, 2-4/carton 22 cu ft

Contact Spec™ Customer Service to railroad fabrics (specify repeat info and yardage requirement will be provided) and for repeats greater than 5" x 5"



Available on Spec 10 Day Program

Options

- Wood seat, add \$55 List to COM price
- Custom back cut-outs and engravings
- Wall-saving frame on Four-point only, add \$20 List
- Polyurethane arms available in Black (B), Sterling Grey (G) or Taupe RAL 7006 (T)
- Connecting bars for a structured reconfigurable layout, add \$80 List
- Antibacterial and antimicrobial fabrics available
- Different fabric on seat and back at no upcharge
- Tablet Arm available on Snowballs without arms
- CAL 133
- Other glides may be available for an upcharge - call Customer Service to inquire
- DuraSpec seat is available on 18"w and 22"w chairs only - call Customer Service for pricing



Optional wall-saving frame



Optional DuraSpec seat

Snowball 3 – Four-point

COM 0.5 yd
0.5 yd COM per single seat

MODEL	COM	GR 1	GR 2	GR 3	GR 4	GR 5	GR 6
1901	402	427	436	454	479	500	525
1911	402	427	436	454	479	500	525

Dimensions (inches)

	seat H	18.0	seat W	18.0	arm H	26.0	total H	33.0
depth	21.5	total W	23.5	total W (no arms)	20.1			

Exceeds BIFMA Seating Durability Test to 500 lbs
CAL 133, add \$30 List
1" extra seat foam, specify and add \$14 List



1901
With arms
16 lbs



1911
Without arms
15 lbs

SIN 711-19

Snowball 3 – Sled Base

COM 0.5 yd
0.5 yd COM per single seat

MODEL	COM	GR 1	GR 2	GR 3	GR 4	GR 5	GR 6
1931	415	441	450	467	493	513	539
1941	415	441	450	467	493	513	539

Dimensions (inches)

	seat H	18.0	seat W	18.0	arm H	26.0	total H	33.0
depth	21.5	total W	23.5	total W (no arms)	20.1			

Exceeds BIFMA Seating Durability Test to 500 lbs
CAL 133, add \$30 List
1" extra seat foam, specify and add \$14 List



1931
With arms
18 lbs



1941
Without arms
17 lbs

SIN 711-18



SNOWBALL 3 Public Seating

Midsized and Bariatric – Four-point

Standard Features

- 0.875" frame
- Upholstered seat and wood back
- Seat and/or back in Natural Maple in any of 9 standard stains or stain-to-match at no upcharge
- Choice of 5 back cut-outs
- Black polyurethane arms, add B to end of model number
- Frame in any Spectone color
- Four-point stacks 4 high on floor or with dolly
- Ships 1-3/carton 21.24 cu ft for Midsized and 1-3/ carton 24.17 cu ft for Bariatric

Contact Spec Customer Service to railroad fabrics (specify repeat info and yardage requirement will be provided) and for repeats greater than 5" x 5"



Available on Spec 10 Day Program

Options

- Custom back cut-outs and engravings
- Wall-saving frame, add \$20 List
- Polyurethane arms available in Black (B), Sterling Grey (G) or Taupe RAL 7006 (T)
- Connecting bars for a structured reconfigurable layout, add \$80 List
- Antibacterial and antimicrobial fabrics available
- Different fabric on seat and back at no upcharge
- CAL 133
- Other glides may be available for an upcharge - call Customer Service to inquire
- DuraSpec seat is available on 18"w and 22"w chairs only - call Customer Service for pricing



Optional wall-saving frame



Optional DuraSpec seat

Snowball 3 – Midsized – Four-point

SIN 711-19

COM 0.75 yd
0.75 yd COM per single seat

MODEL	COM	GR 1	GR 2	GR 3	GR 4	GR 5	GR 6
1904	433	475	489	515	557	590	631
1914	433	475	489	515	557	590	631

*1914 Not Available on 10 Day Program

Dimensions (inches)

seat H	18.0	seat W	22.0	arm H	26.0	total H	33.0
depth	22.0	total W	26.9	total W (no arms)	24.0		

Exceeds BIFMA Seating Durability Test to 500 lbs

CAL 133, add \$41 List

1" extra seat foam, specify and add \$21 List



1904
With arms
18 lbs

1914
Without arms
17 lbs

*Not Available on
10 Day Program

Snowball 3 – Bariatric – Four-point

COM 1.0 yd
1.0 yd COM per single seat

MODEL	COM	GR 1	GR 2	GR 3	GR 4	GR 5	GR 6
1903	544	585	601	626	668	700	742

Dimensions (inches)

seat H	18.0	seat W	26.0	arm H	26.0
total H	33.0	total W	31.0	depth	22.0

Exceeds BIFMA Seating Durability Test to 500 lbs

CAL 133, add \$41 List

1" extra seat foam, specify and add \$30 List



1903
With arms
23 lbs

SIN 711-19



SNOWBALL 3 Public Seating

Midsize and Bariatric – Sled Base

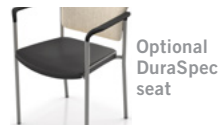
Standard Features

- 0.875" frame
- Upholstered seat and wood back
- Seat and/or back in Natural Maple in any of 9 standard stains or stain-to-match at no upcharge
- Choice of 5 back cut-outs
- Seat and back upholstered
- Frame in any Spectone color
- Does not stack
- Ships 1/carton 21 cu ft

Contact Spec Customer Service to railroad fabrics (specify repeat info and yardage requirement will be provided) and for repeats greater than 5" x 5"

Options

- Custom back cut-outs and engravings
- Connecting bars for a structured reconfigurable layout, add \$80 List
- Antibacterial and antimicrobial fabrics available
- Different fabric on seat and back at no upcharge
- Tablet Arm available on Snowballs without arms
- CAL 133
- Other glides may be available for an upcharge - call Customer Service to inquire
- DuraSpec seat is available on 18"w and 22"w chairs only - call Customer Service for pricing



Snowball 3 – Midsize – Sled Base

COM 0.75 yd
0.75 yd COM per single seat

MODEL	COM	GR 1	GR 2	GR 3	GR 4	GR 5	GR 6
1944	466	507	522	549	591	623	665

Dimensions (inches)

	seat H	18.0	seat W	22.0	arm H	N/A
total H	33.0	total W	24.0	depth	22.0	

Exceeds BIFMA Seating Durability Test to 500 lbs
CAL 133, add \$41 List
1" extra seat foam, specify and add \$21 List



1944
Without arms
20 lbs

Snowball 3 – Bariatric – Sled Base

COM 1.0 yd
1.0 yd COM per single seat

MODEL	COM	GR 1	GR 2	GR 3	GR 4	GR 5	GR 6
1943	576	619	632	660	701	733	775

Dimensions (inches)

	seat H	18.0	seat W	26.0	arm H	N/A
total H	33.0	total W	28.0	depth	22.0	

Exceeds BIFMA Seating Durability Test to 500 lbs
CAL 133, add \$41 List
1" extra seat foam, specify and add \$30 List



1943
Without arms
25 lbs



SNOWBALL 3 Public Seating

Casters

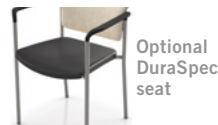
Standard Features

- 0.875" frame
- Upholstered seat and wood back
- Seat and/or back in Natural Maple in any of 9 standard stains or stain-to-match at no upcharge
- Choice of 5 back cut-outs
- Seat and back upholstered
- Black polyurethane arms, add B to end of model number
- Frame in any Spectone color
- Black non-locking casters
- Four-point stacks 10 high with dolly, 6 without dolly
- Ships 1/carton 11 cu ft, 2-3/carton 22 cu ft

Contact Spec Customer Service to railroad fabrics (specify repeat info and yardage requirement will be provided) and for repeats greater than 5" x 5"

Options

- Wood seat, add \$55 List to COM price
- Custom back cut-outs and engravings
- Polyurethane arms available in Black (B), Sterling Grey (G) or Taupe RAL 7006 (T)
- Antibacterial and antimicrobial fabrics available
- Different fabric on seat and back at no upcharge
- Armless and sled base versions not available
- CAL 133
- DuraSpec seat is available on 18"w and 22"w chairs only - call Customer Service for pricing



Snowball 3 – Casters

COM 0.5 yd
0.5 yd COM per single seat

MODEL	COM	GR 1	GR 2	GR 3	GR 4	GR 5	GR 6
1902	521	549	557	573	601	620	645

Dimensions (inches)

seat H	18.0	seat W	18.0	arm H	26.0	armless W	20.125
total H	33.0	total W	23.5	depth	21.5		

Exceeds BIFMA Seating Durability Test to 500 lbs

CAL 133, add \$30 List

1" extra seat foam, specify and add \$14 List



1902
With arms
17 lbs



SNOWBALL 3 Public Seating

Stools

Standard Features

- 0.875" frame
- Upholstered seat and wood back
- Seat and/or back in Natural Maple in any of 9 standard stains or stain-to-match at no upcharge
- Choice of 5 back cut-outs
- Seat and back upholstered
- Black polyurethane arms, add B to end of model number
- Frame in any Spectone color
- Does not stack
- Ships 1/carton 17 cu ft

Options

- Wood seat, add \$55 List to COM price
- Custom back cut-outs and engravings
- Polyurethane arms available in Black (B), Sterling Grey (G) or Taupe RAL 7006 (T)
- Antibacterial and antimicrobial fabrics available
- Different fabric on seat and back at no upcharge
- Casters, sled base not available
- CAL 133
- Other glides may be available for an upcharge - call Customer Service to inquire
- DuraSpec seat is available on 18"w and 22"w chairs only - call Customer Service for pricing

Contact Spec Customer Service to railroad fabrics (specify repeat info and yardage requirement will be provided) and for repeats greater than 5" x 5"



Snowball 3 – Stool

COM 0.5 yd
0.5 yd COM per single seat

MODEL	COM	GR 1	GR 2	GR 3	GR 4	GR 5	GR 6
1921	509	533	543	560	585	606	631
1951	509	533	543	560	585	606	631

Dimensions (inches)

	seat H	28.0	seat W	18.0	arm H	36.0	total H	43.5
depth	21.5	total W	23.5	total W (no arms)	20.1			

Exceeds BIFMA Seating Durability Test to 500 lbs
CAL 133, add \$30 List
1" extra seat foam, specify and add \$14 List



1921
With arms
21 lbs



1951
Without arms
20 lbs

Snowball 3 – Midsize Stools

COM 0.75 yd
0.75 yd COM per single seat

MODEL	COM	GR 1	GR 2	GR 3	GR 4	GR 5	GR 6
1924	575	616	631	657	699	732	773
1926	575	616	631	657	699	732	773

Dimensions (inches)

	seat H	28.0	seat W	22.0	arm H	36.0	total H	43.5
depth	22.0	total W	26.9	total W (no arms)	24.0			

Exceeds BIFMA Seating Durability Test to 500 lbs
CAL 133, add \$41 List
1" extra seat foam, specify and add \$21 List



1924
With arms
23 lbs



1926
Without arms
22 lbs



SNOWBALL 3 Public Seating

Easy Access Hip Single Seater

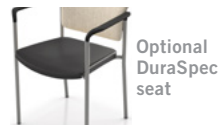
Standard Features

- 0.875" frame
- Seat and back upholstered
- Black polyurethane arms, add B to end of model number
- Frame in any Spectone color
- Does not stack
- Ships 1/carton 19 cu ft

Contact Spec Customer Service to railroad fabrics (specify repeat info and yardage requirement will be provided) and for repeats greater than 5" x 5"

Options

- Wood seat, add \$55 List to COM price
- Polyurethane arms available in Black (B), Sterling Grey (G) or Taupe RAL 7006 (T)
- Antibacterial and antimicrobial fabrics available
- Different fabric on seat and back at no upcharge
- Casters, sled base not available
- CAL 133
- Other glides may be available for an upcharge - call Customer Service to inquire
- DuraSpec seat is available on 18"w and 22"w chairs only - call Customer Service for pricing



Snowball 3 – Easy Access Hip Chair

COM 0.5 yd
0.5 yd COM per single seat

MODEL	COM	GR 1	GR 2	GR 3	GR 4	GR 5	GR 6
1921E	551	575	584	602	627	647	673

Dimensions (inches)

seat H	24.0	seat W	18.0	arm H	32.0
total H	38.5	total W	23.5	depth	31.0

Exceeds BIFMA Seating Durability Test to 500 lbs
CAL 133, add \$30 List
1" extra seat foam, specify and add \$14 List



1921E
With arms
21 lbs

Snowball 3 – Midsize Easy Access Hip Single Seater

COM 0.75 yd
0.75 yd COM per single seat

MODEL	COM	GR 1	GR 2	GR 3	GR 4	GR 5	GR 6
1924E	622	663	678	704	746	779	819

Dimensions (inches)

seat H	24.0	seat W	22.0	arm H	32.0
total H	38.5	total W	26.9	depth	31.0

Exceeds BIFMA Seating Durability Test to 500 lbs
CAL 133, add \$41 List
1" extra seat foam, specify and add \$21 List



1924E
With arms
23 lbs



Pricing August 2017
Discount 57.7% from List prices



SIN 711-19

SNOWBALL 3 Public Seating

Dolly

Standard Features

- Black finish only
- 2" black swivel casters
- Standard Dolly stacks 10 chairs
- Midsize Dolly stacks 4 chairs
- Bariatric Dolly stacks 4 chairs
- Ships 1/carton 17 cu ft

Options

- Please specify if Dolly is for chairs with wall-saving frame



Available on Spec 10 Day Program



Snowball 3 – Dolly

DESCRIPTION	MODEL	PRICE
Standard	1899	343
22" Midsize	1899M	491
26" Bariatric	1899G	491

Dimensions (inches)

Standard		Midsize / Bariatric	
height	36.5	height	36.5
width	21.0	width	23.0
depth	31.0	depth	42.0



**1899
Standard**
18 lbs



**1899 G&M
Midsize & Bariatric**
24 lbs



SNOWBALL 3 Public Seating

Connected and Tables

To order connected Snowballs

- Select and price the Snowballs required for your configuration
- Select and price the corner, spacer and end tables required
- Add Snowball connecting bars (between chairs only)
- Do not add connecting bars for tables (they are part of the table)
- Send a drawing with your order or call Spec for assistance

Snowball Tables

- Table top is 3/4" thick
- Self Edge, PVC Flat and 2mm edge available. PVC Flat edge and 2 mm Bio edge available in 38 solid colors. 2mm PVC edge available in wood grain to match 9 standard stains.
- Select laminate tops from 15 standard laminates or choose any standard Wilsonart, Nevamar, Formica, Arborite and Pionite matte finish laminates at no upcharge.

Connecting bars and tables can be retrofitted, allowing you to change configurations later or create new configurations from your present Snowballs

Connecting bars can be added to any Snowball chair, including Bariatric and Midsize

Connecting bars and table frame bars are finished in the same color as the color of the chair frames

Connecting bars are fastened to the underside of the Snowball chair frame at the front and back



Snowball 3 – Connected and Tables



DESCRIPTION	Corner Table	Spacer Table	Mini Spacer Table	End Table*	Connecting Bars
MODEL	18RC	18ST	18MT	18ET	18CON
DIMENSIONS (inches)	25 x 25	17 x 17	4.5 x 14.5	17 x 17	N/A
PRICE	330	226	135	235	80

*End table is handed, provide layout



SNOWBALL 3 Public Seating

Tablet Arms and Wire Basket

Tablet Arm

- Fits any Snowball, freestanding or within a configuration
- Standard or laptop size available
- Right and left handed versions (defined when sitting in chair), add TR for right handed or TL for left handed to model number
- Laminated on both sides, standard in Wilsonart Dove Grey D-92-60 with flat black PVC edge. For other laminate please contact the factory for pricing
- Tablet constructed of 3/4" Nu Green core
- Snowball with Tablet Arm is standard with no arm on opposite side
- Add price of Tablet Arm to your Snowball selection

Note: We do not recommend stacking Snowballs that have tablet arms

Wire Basket

- Add to any 18" wide Snowball
- Black
- Removable



Snowball 3 – Tablet Arm and Wire Basket



DESCRIPTION
MODEL
PRICE

Standard Tablet Arm
TR (right) or TL (left)
231

Laptop Tablet Arm
LTR (right) or LTL (left)
260

Wire Basket
WB
57

Dimensions (inches)

height 27.5
width 12.75
total W 24.5
length 24.0
tablet extends 6" from seat

height 27.5
width 16.0
total W 24.5
length 24.75
tablet extends 7" from seat



SNOWBALL 3 Public Seating

Wood Back Options

Wood Back

- Backs standard in Natural maple in any of 9 standard stains or stain-to-match at no upcharge
- On the 10 Day Program; only back design A is available in Cherry stain or Natural Maple stain

Custom Wood Back Cut-out

- A one time set up charge of \$260 list applies
- Design should fit within a 5" x 5" space (due to contour of back)
- Shape will be mirrored from the front of the chair

Pick a back design and add suffix A-E following the model number, e.g. 1901BA (Snowball 3 with black arms and back design A)

Custom Wood Back Engraving and Vinyl Decals

- For quantities over 25, add an upcharge of \$53 List/chair
- For quantities under 25, add an upcharge of \$53 List/chair, plus a \$260 List set up fee **per order**

Engravings: Please note that inconsistencies in the wood may show after the engraving is completed. When choosing the raw wood, we take extra care to select backs that are similar in graining and color, however, no guarantee can be made. We recommend that an engraved image be stained a darker color to hide possible inconsistencies.

Snowball 3 – Wood Back Designs



Wood Back Design "A"



Wood Back Design "B"



Wood Back Design "C"



Wood Back Design "D"



Wood Back Design "E"

Snowball 3 – Custom Wood Back Cut-out



Snowball 3 – Custom Wood Back Engraving



Snowball 3 – Custom Wood Back Vinyl Decals



Available up to 4"x4"
Maximum of 4 colors per decal
Vector based files required



SNOWBALL 3 Public Seating

10 Day Program

Standard Features

- Black polyurethane arms
- Upholstered seat and wood back
- Back in Cherry stain or Natural Maple stain
- Back cut-out A
- Black or silver frame finish
- A selection of fabrics and vinyls can be seen on our website under 10 Day Quickship

For information on the 10 Day Program guarantee and terms and conditions, visit our website and go to 10 Day Quickship, Terms & Conditions tab.

Options

- Snowball Dolly stacks regular width four-point Snowballs up to 10 high

Snowball 3

COM 0.5 yd
0.5 yd COM per single seat

MODEL	COM	GR 1	GR 2	GR 3	GR 4	GR 5	GR 6
1901	402	427	436	454	479	500	525
1911	402	427	436	454	479	500	525
1904	433	475	489	515	557	590	631



1901
With arms
16 lbs



1911
Without arms
15 lbs



1904
With arms
18 lbs

Snowball 3 – Dolly

DESCRIPTION	MODEL	PRICE
Standard	1899	343
22" Midsize	1899M	491

Dimensions (inches)

	Standard	Midsize
height	36.5	36.5
width	21.0	23.0
depth	31.0	42.0



1899
Standard
18 lbs



1899M
Midsize
24 lbs

