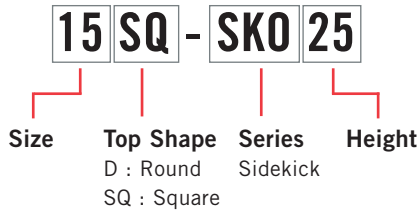


# SIDEKICK TABLES



## PLACING AN ORDER IS EASY

### PRODUCT CODE

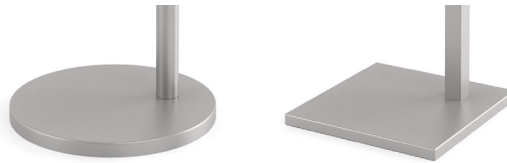


### OPTIONS

#### UPHOLSTERY CAP



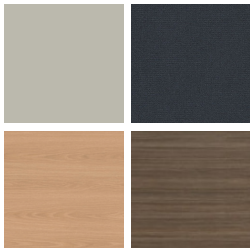
#### BASE SHAPE\*



\*Table top shape determines base shape.

### FINISHES

#### LAMINATE



Select from 15 standard laminates or choose any standard Wilsonart, Nevamar, Formica, Arborite and Pionite matte finish laminates at no upcharge

#### VENEER



Select from one of our 9 standard wood stains or stain-to-match at no upcharge

#### BASE



Select from one of our 76 standard Spectone colors

#### EDGE



Check out our website for a complete list of edge profiles.



# SIDEKICK TABLES OCCASIONAL

SIZE	MODEL <i>Code</i>	DESCRIPTION	BASE <i>Qty.</i>	TOP SPECIFICATIONS						OPTION  UPHOLSTERY CAP  <i>Add</i>	LBS
				<i>For Laminate Top</i>			<i>For Veneer Top</i>				
				SE PVF 2MM	HF HB	HBV HBVR HBG	HF2 HB2 HKN4 HBG2	HF HB HBV HBVR HBG	HF2 HB2 HKN4 HBG2		
<i>Round</i>											
15	15D-SK018	15" Round Top with 18" High Offset Base	1	501	785	817	899	945	1033	50	26
	15D-SK022	15" Round Top with 22" High Offset Base	1	501	785	817	899	945	1033	50	26
	15D-SK025	15" Round Top with 25" High Offset Base	1	501	785	817	899	945	1033	-	26
18	18D-SK018	18" Round Top with 18" High Offset Base	1	550	849	882	970	1018	1109	50	33
	18D-SK022	18" Round Top with 22" High Offset Base	1	550	849	882	970	1018	1109	50	33
	18D-SK025	18" Round Top with 25" High Offset Base	1	550	849	882	970	1018	1109	-	33
22	22D-SK018	22" Round Top with 18" High Offset Base	1	635	926	959	1047	1095	1186	-	44
	22D-SK022	22" Round Top with 22" High Offset Base	1	635	926	959	1047	1095	1186	-	44
	22D-SK025	22" Round Top with 25" High Offset Base	1	635	926	959	1047	1095	1186	-	44
<i>Square</i>											
15	15SQ-SK018	15" Square Top with 18" High Offset Base	1	472	633	663	717	753	883	-	26
	15SQ-SK022	15" Square Top with 22" High Offset Base	1	472	633	663	717	753	883	-	27
	15SQ-SK025	15" Square Top with 25" High Offset Base	1	472	633	663	717	753	883	-	27
18	18SQ-SK018	18" Square Top with 18" High Offset Base	1	525	694	725	781	820	956	-	34
	18SQ-SK022	18" Square Top with 22" High Offset Base	1	525	694	725	781	820	956	-	35
	18SQ-SK025	18" Square Top with 25" High Offset Base	1	525	694	725	781	820	956	-	35
22	22SQ-SK018	22" Square Top with 18" High Offset Base	1	610	772	803	859	898	1034	-	47
	22SQ-SK022	22" Square Top with 22" High Offset Base	1	610	772	803	859	898	1034	-	47
	22SQ-SK025	22" Square Top with 25" High Offset Base	1	610	772	803	859	898	1034	-	48

Exceeds BIFMA Seating Durability Test to 300 lbs.



### STANDARD FEATURES

- Available in 15", 18" and 22" round or square tops at 18", 22" and 25" heights.
- Round Base and offset column is used with round tops.
- Square Base and offset column is used with square tops.
- Select from 15 standard laminates or choose any standard Wilsonart, Nevamar, Formica, Arborite and Pionite matte finish laminates at no upcharge. For other laminate please contact the factory for pricing.
- 9 standard veneer and hardwood edge stains. Stain-to-match available at no upcharge.
- Base and column available in any of 76 Spectone colors.
- Levelling glides

### OPTION

- Upholstery cap is available on some models.

### HOW TO ORDER

1. Select Model
2. Select Edge Style
3. Select Option
4. Select Top Finish
5. Select Edge Finish
6. Select Base Finish

Example: 15D-SK018-PVF-

