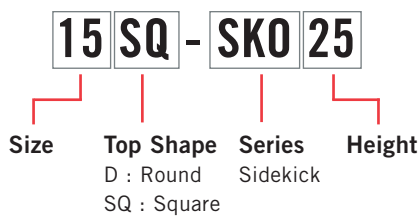


SIDEKICK TABLES



PLACING AN ORDER IS EASY

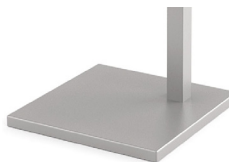
PRODUCT CODE



OPTIONS

UPHOLSTERY CAP

BASE SHAPE*



*Table top shape determines base shape.

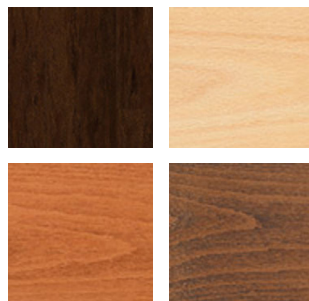
FINISHES

LAMINATE



Select laminate from our virtually unlimited laminate options

VENEER



Select from one of our 7 standard wood stains or stain-to-match at no upcharge

BASE



Select from one of our 76 standard Spectone colors

EDGE



2MM PVC Hard Wood

Check out our website for a complete list of edge profiles.



SIDEKICK

| SIZE | MODEL | DESCRIPTION | BASE | TOP SPECIFICATIONS | | | | | | OPTION | LBS |
|---------------|-------------|--|-------------|-------------------------|-------------------------|--------------------|-----------------------------|------------------------|-----------------------------|--------|-----|
| | | | | SE PVF PVB 2MM | HF HB | HBV HBVR HBG | HF2 HB2 HKNR4 HBG2 | HF HB HBV HBG | HF2 HB2 HKNR4 HBG2 | | |
| | <i>Code</i> | | <i>Qty.</i> | | <i>For Laminate Top</i> | | <i>For Veneer Top</i> | | UPHOLSTERY CAP | | |
| | | | | | | | | | <i>Add</i> | | |
| <i>Round</i> | | | | | | | | | | | |
| 15 | 15D-SK018 | 15" Round Top with 18" High Offset Base | 1 | 587 | 909 | 942 | 1037 | 1088 | 1186 | 47 | 26 |
| | 15D-SK022 | 15" Round Top with 22" High Offset Base | 1 | 587 | 909 | 942 | 1037 | 1088 | 1186 | 47 | 26 |
| | 15D-SK025 | 15" Round Top with 25" High Offset Base | 1 | 587 | 909 | 942 | 1037 | 1088 | 1186 | - | 26 |
| 18 | 18D-SK018 | 18" Round Top with 18" High Offset Base | 1 | 648 | 988 | 1022 | 1122 | 1175 | 1278 | 47 | 33 |
| | 18D-SK022 | 18" Round Top with 22" High Offset Base | 1 | 648 | 988 | 1022 | 1122 | 1175 | 1278 | 47 | 33 |
| | 18D-SK025 | 18" Round Top with 25" High Offset Base | 1 | 648 | 988 | 1022 | 1122 | 1175 | 1278 | - | 33 |
| 22 | 22D-SK018 | 22" Round Top with 18" High Offset Base | 1 | 751 | 1080 | 1114 | 1214 | 1267 | 1370 | - | 44 |
| | 22D-SK022 | 22" Round Top with 22" High Offset Base | 1 | 751 | 1080 | 1114 | 1214 | 1267 | 1370 | - | 44 |
| | 22D-SK025 | 22" Round Top with 25" High Offset Base | 1 | 751 | 1080 | 1114 | 1214 | 1267 | 1370 | - | 44 |
| <i>Square</i> | | | | | | | | | | | |
| 15 | 15SQ-SK018 | 15" Square Top with 18" High Offset Base | 1 | 557 | 739 | 771 | 830 | 873 | 1018 | - | 26 |
| | 15SQ-SK022 | 15" Square Top with 22" High Offset Base | 1 | 557 | 739 | 771 | 830 | 873 | 1018 | - | 27 |
| | 15SQ-SK025 | 15" Square Top with 25" High Offset Base | 1 | 557 | 739 | 771 | 830 | 873 | 1018 | - | 27 |
| 18 | 18SQ-SK018 | 18" Square Top with 18" High Offset Base | 1 | 615 | 805 | 839 | 901 | 946 | 1100 | - | 34 |
| | 18SQ-SK022 | 18" Square Top with 22" High Offset Base | 1 | 615 | 805 | 839 | 901 | 946 | 1100 | - | 35 |
| | 18SQ-SK025 | 18" Square Top with 25" High Offset Base | 1 | 615 | 805 | 839 | 901 | 946 | 1100 | - | 35 |
| 22 | 22SQ-SK018 | 22" Square Top with 18" High Offset Base | 1 | 719 | 899 | 933 | 995 | 1040 | 1194 | - | 47 |
| | 22SQ-SK022 | 22" Square Top with 22" High Offset Base | 1 | 719 | 899 | 933 | 995 | 1040 | 1194 | - | 47 |
| | 22SQ-SK025 | 22" Square Top with 25" High Offset Base | 1 | 719 | 899 | 933 | 995 | 1040 | 1194 | - | 48 |

Exceeds BIFMA Seating Durability Test to 300 lbs.



STANDARD FEATURES

- Available in 15", 18" and 22" round or square tops at 18", 22" and 25" heights.
- Round Base and offset column is used with round tops.
- Square Base and offset column is used with square tops.
- Laminate tops are available in any standard Wilsonart, Nevamar, Formica, Arborite or Pionite matte finish.
- For other laminates please contact the factory.
- Veneers and hardwood edge stains are standard in Maple, Mahogany, Cherry, Oak, Pecan, Walnut and Chocolate or Stain-to Match at no upcharge.
- Base and column available in any of 76 Spectone colors.

OPTION

- Upholstery cap is available on some models.

HOW TO ORDER

1. Select Model
2. Select Edge Style
3. Select Option
4. Select Top Finish
5. Select Edge Finish
6. Select Base Finish

Example: 15D-SK018-PVF-

