



SNOWFLAKE Children's Series



PLACING AN ORDER IS EASY

PRODUCT CODE

CHAIR

1805

Series

- 1805 : Snowflake 1
- 1855 : Snowflake 2
- 1905 : Snowflake 3

TABLE

24 SF

Size

- 24 : 24"
- 30 : 30"
- 36 : 36"

Collection

SF : Snowflake



OPTIONS

SERIES OPTIONS

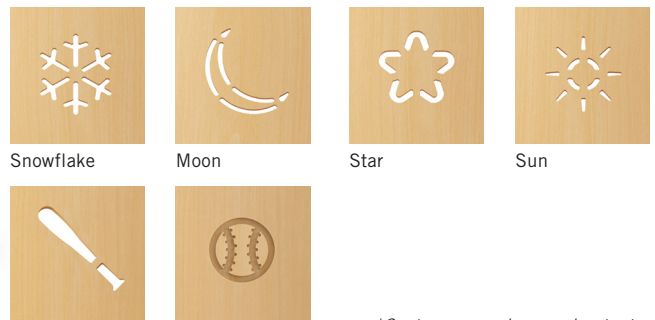


Snowflake 1

Snowflake 2

Snowflake 3

SNOWFLAKE 3 BACK



*Custom Cutout

*Custom Engraving

*Custom engravings and cutouts are available. Please call for pricing.

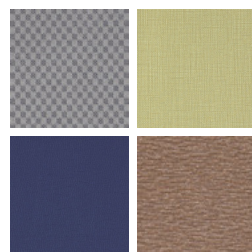
FINISHES

FRAME



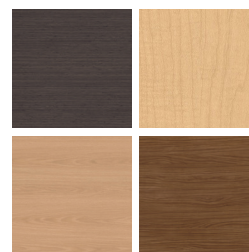
Select from one of our 76 standard Spectone colors

FABRIC



Select fabrics from one of our textile partners

BACK STAIN



Select from one of our 9 standard wood stains or stain-to-match at no upcharge



SNOWFLAKE Children's Series

Snowflake 1 and 2

Standard Features

- Snowflake 1; seat and back upholstered
- Snowflake 2; seat and back upholstered, back has enhanced contours for superior comfort
- Frame in any Spectone color
- Stack 4 high
- Ships 2/carton 6 cu ft

Options

- Antibacterial and antimicrobial fabrics available
- Different fabric on seat and back at no upcharge
- CAL 133

Contact Spec™ Customer Service to railroad fabrics (specify repeat info and yardage requirement will be provided) and for repeats greater than 5" x 5"



Snowflake 1

COM 0.83 yds
0.33 yd COM per single seat / 0.5 yd COM per single back

MODEL	COM	GR 1	GR 2	GR 3	GR 4	GR 5	GR 6
1805	303	335	347	369	402	426	469

Dimensions (inches)

seat H	14.0	seat W	13.0	arm H	N/A
total H	24.0	total W	15.25	depth	15.0

CAL 133, add \$59 List per seat



1805
9 lbs

Snowflake 2

COM 0.83 yds
0.33 yd COM per single seat / 0.5 yd COM per single back

MODEL	COM	GR 1	GR 2	GR 3	GR 4	GR 5	GR 6
1855	316	350	360	380	415	439	481

Dimensions (inches)

seat H	14.0	seat W	13.0	arm H	N/A
total H	24.0	total W	15.25	depth	15.0

CAL 133, add \$59 List per seat



1855
9 lbs



SNOWFLAKE Children's Series

Snowflake 3

Standard Features

- Seat upholstered with wood back
- Natural maple back in any of 9 standard stains or stain-to-match at no upcharge
- Frame in any Spectone color
- Stack 4 high
- Ships 2/carton 6 cu ft

Contact Spec Customer Service to railroad fabrics (specify repeat info and yardage requirement will be provided) and for repeats greater than 5" x 5"

Options

- Snowflake, Star, Sun and Moon cut-outs at no upcharge
- Custom cut-outs and engravings
- Wood seat, add \$55 List to COM price
- Antibacterial and antimicrobial fabrics available
- Different fabric on seat and back at no upcharge
- CAL 133

Custom Seat Back Cut-out

- A one time set up charge of \$260 List applies
- Design should fit within a 5" x 5" space (due to contour of back)
- Shape will be mirrored from the front of the chair

Custom Seat Back Engraving

- For quantities over 25, add an upcharge of \$53 List/chair
- For quantities under 25 add an upcharge of \$53 List/chair, plus a \$260 List set up **fee per order**

Please note that inconsistencies in the wood may show after the engraving is completed. When choosing the raw wood, we take extra care to select backs that are similar in graining and color, however, no guarantee can be made. We recommend that an engraved image be stained a darker color to hide possible inconsistencies.



Snowflake 3

COM 0.33 yds
0.33 yd COM per single seat

MODEL	COM	GR 1	GR 2	GR 3	GR 4	GR 5	GR 6
1905	329	346	352	361	377	391	415

Dimensions (inches)

seat H	14.0	seat W	13.0	arm H	N/A
total H	24.0	total W	15.25	depth	15.0

CAL 133, add \$31 List per seat



1905
9 lbs

Snowflake – Seat Back Designs



Snowflake



Star



Sun



Moon

SNOWFLAKE Children's Series

Freestanding Table

Standard Features

- Tops constructed from 0.75" particle board core with laminate surface and backer
- Select from 15 standard laminates or choose any standard Wilsonart, Nevamar, Formica, Arborite and Pionite matte finish laminates at no upcharge. For other laminate please contact the factory for pricing.
- Edge is PVC Flat (PVF) with 38 colors available to match base finishes
- Frame in any Spectone color
- Tops utilize Nu Green earth friendly core
- 22" height
- Ships 1/carton

Options

- Non-standard laminates, contact Spec for pricing
- Other shapes such as round or square are available in non-stacking designs
- Other sizes may be available



Freestanding Table

Model	Top Size (inches)	Laminate PVF Edge	Weight	Cu.Ft.
24SF	24	575	27	11
30SF	30	678	37	16
36SF	36	743	48	22

