

Disassembly Instructions

Credenzas come standard in 2 door, 3 door, or 4 door sizes with the option of a 2" kick plate or 2" legs in extruded aluminum finished in any Spectone Color. Credenzas are available with veneer or laminate and an option of hardwood or PVC edges. Units are standard at 29" high with one adjustable shelf, and touch latch doors. Locking doors and handles are available. Customs are also available.

Recyclable Material (lbs)



steel foot plate (qty 4)	4.08
aluminium feet (qty 4)	11.04
particle board	154.67

Total Weight 169.79

*values base on a three door credenza.



Credenzas

Tools: Phillips  or Robertson  screwdriver , box cutter knife, hammer or rubber mallet, pliers.

Skill Set: Good manual dexterity.

Estimated Time: 18 min per credenza.

Steps:

1. Doors - 5min

Open the door and identify the corresponding door hinge mechanism. Detach the door by unclasp the hinge from the credenza gable. Repeat process to all doors. With the required screwdriver, remove hinge components from door and cabinet gables.

2. Shelving - 2min

Extract shelving panels from the credenza. Remove all shelf support tabs by hand.

3. Door Close Mechanism - 2min

Identify the magnetic closing mechanism mounted on the underside of the credenza top. Locate the three fasteners and unscrew with the required screwdriver.

4. Top - 2min

Identify the 8 fasteners located on the underside of the top, inside the credenza. Remove all screws with the required screwdriver. Lift top of the credenza assembly to remove.

5. Glides - 2min

Orientate the credenza in an upside down position to gain access to feet. Locate the glide in the base of the foot. Unthread the glide with hands or pliers. Repeat process to all remaining glides.

6. Feet / Kick plate - 5min

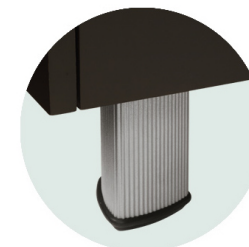
Feet - Locate the 6 fasteners on the connecting plate of the foot. Unfasten screws and remove foot. Repeat procedure to all remaining feet.

Kick plate - Identify the L brackets around the inside perimeter of the kick plate. With the required screwdriver, remove fasteners. Detach L bracket from the kick plate, repeat process to all remaining L brackets. Lift the kick plate

assembly from the credenza frame. With a rubber mallet or hammer, knock apart kick plate construction.

Visit spec's green news page at specfurniture.com and click on "End of Product Life Options" for recycling and biodegradation facilities near you.

Bases



feet



kick plate