

GENERAL PURPOSE TABLES

Built with Style for Every Environment



Exceed Your Expectations

Our General Purpose tables are crafted to fit into all markets and a wide range of spaces. Whether you prioritize durability, functionality, or aesthetics, our tables are engineered to fulfill the demands of any environment and budget. Top shapes, edge styles, and base types are just some ways you can specify a table to create beautiful spaces that work for all who use them.

Our capabilities don't stop there. With our manufacturing based in North America, Spec boasts extensive capabilities in swiftly customizing designs to precisely match your requirements. We prioritize efficiency without compromising on quality, ensuring your tailored solutions are delivered promptly.

Factory *Top: Solid Wood, Clear Coat; Base: RAL 7015.*
Yorkville *Top: Pionite, ST606 Taupe; Edge: 2MM Nevada; Base: Nevada.*
Conductor *Top: Formica, 912 Storm; Edge: 2MM Nevada; Base: Nevada.*
Latch *Top: Wilsonart, 8203 Silver Oak Ply; Edge: 2MM RAL 7015; Base: RAL 7015.*
Acute *Top: Formica, 912 Storm; Edge: RAL 7015; Base: RAL 7015.*

Manhattan (Front Cover) *Top: Wilsonart, 7965K-78 Walnut Heights; Edge: 2MM Walnut Heights; Base: RAL 8025.*
EndZone Bench (Front Cover) *Upholstery: Momentum, Pod, Vert; Laminate: Wilsonart, 7938-38 New Age Oak.*
Fizz (Front Cover) *Shell: RAL 5000; Frame: RAL 5000.*



Yorkville Top: Nevamar, WW3100 Stout Walnut; Base: RAL 9005.
Jazzy Shell: Wilsonart, 1595-60 Black; Shell Edge: Clear Coat; Frame: RAL 9005.



X bases are an appropriate choice for round or square table tops.



C bases are ideal for classrooms, training rooms, and other spaces where all tables are facing the same direction.



The classic T base fits any setting. Users are typically seated on both sides of a table that features a T base profile.



Y bases are available with Yorkville tables, creating more legroom on table ends.



With strong and sturdy bases, our Varsity tables (square design) and Post Legs tables (round and oval designs) are ready to get down to work.



Our flat metal and trumpet base offering is another great solution for tables that will seat users from all sides.

Back to Bases

Our bases are crafted to seamlessly blend durability with sophisticated style. Choose from a wide range of metal base designs to find a look that suits your space.

Top It Off

Explore our versatile array of table tops, meticulously crafted in various shapes and sizes to perfectly complement any setting. From specialized shapes like video conference, bullet, and half moon to classic shapes such as round, rectangle, and square, our wide selection ensures there’s a perfect fit for every need.



Manhattan *Top (Rectangle):* Arborite, W433 Brown Sugar Cane; *Edge:* Self Edge, Pionite, ST606 Taupe; *Frame:* Silver.
Top (Bullet): Solid Wood, Clear Coat; *Frame:* RAL 7015.
Top (Half Moon): Pionite, ST606 Taupe; *Edge:* Self Edge, Pionite, ST606 Taupe; *Frame:* Silver.
Top (Trapezoid): Wilsonart, 15505 Black Velvet; *Edge:* Exposed Baltic Birch Plywood, Clear Coat; *Frame:* RAL 9005.
Top (Boatshape): Pionite, ST606 Taupe; *Edge:* Self Edge, Pionite, ST606 Taupe; *Frame:* Silver.
Top (Round): Wilsonart, 7937-38 River Cherry; *Edge:* Self Edge, Wilsonart, 7937-38 River Cherry; *Frame:* Silver.
Top (Racetrack): Pionite, ST606 Taupe; *Edge:* Self Edge, Pionite, ST606 Taupe; *Frame:* Silver.



Tubular *Top:* Wilsonart, 7122K Empire Mahogany, *Edge:* Exposed Baltic Birch Plywood, Empire Mahogany Stain; *Base:* RAL 9001.



2mm flat profile edges are available in 38 solid colors made from bio-based materials as well as nine PVC wood grain patterns.

Flat-edge PVC T-mold edges are also available in 38 solid standard colors and select wood grain patterns. These edges feature a gentle radius corner.

Exposed Baltic birch plywood edges are available in flat and reverse-knife profiles. Clear coat is applied for a natural, modern look. Staining is also available.

Hardwood edges come in flat, bullnose, knife, beveled, or built-up profiles. Available in nine standard stains or stain-to-match for no extra charge.

Our laminate self edge uses the same laminate that is applied to table top. Available with either radius or square corners.

Add an Edge

Our edges come in a wide array of materials, shapes, and finishes, allowing you to tailor your choice based on desired aesthetics or specific requirements for durability and functionality. Whether you’re seeking a sleek modern look or you’re prioritizing resilience in high-traffic areas, our diverse selection ensures you’ll find the right edge for every table.

Make a Move

Nesting, folding, and flip-top designs are some of the ways our tables can accommodate the need for flexible working environments. You can also add casters to most of our General Purpose tables for easy transport when neatly tucking tables away to maximize space.



Latch Table Top: Wilsonart, 7937-38 River Cherry; Top Edge: 2MM River Cherry; Frame: RAL 9016.
Latch Whiteboard Frame: RAL 6011.
Eighteen5 Seat & Back: Black Plastic; Frame: RAL 9016.



Flip tops lock into an upright position, perfect for nesting when not in use.



Casters are an option on many of our General Purpose tables, designed for quick maneuvering. Casters lock into place for added stability.



Folding tables offer a convenient storage solution. An exclusive, patented folding mechanism ensures ease of use with durability beyond belief.



Manhattan Top: Formica, 5784 Ashwood Bone; Top Edge: 2MM RAL 9002; Base: Silver.
Eighteen5 Upholstery: CF Stinson, Lara, Wizard; Frame: RAL 9002.



The electric mechanism is available on rectangular-column Manhattan T base tables in black or silver. The height can be adjusted from 24" to 42".



Use the crank for up to 8" of height adjustment—from 27" to 35".



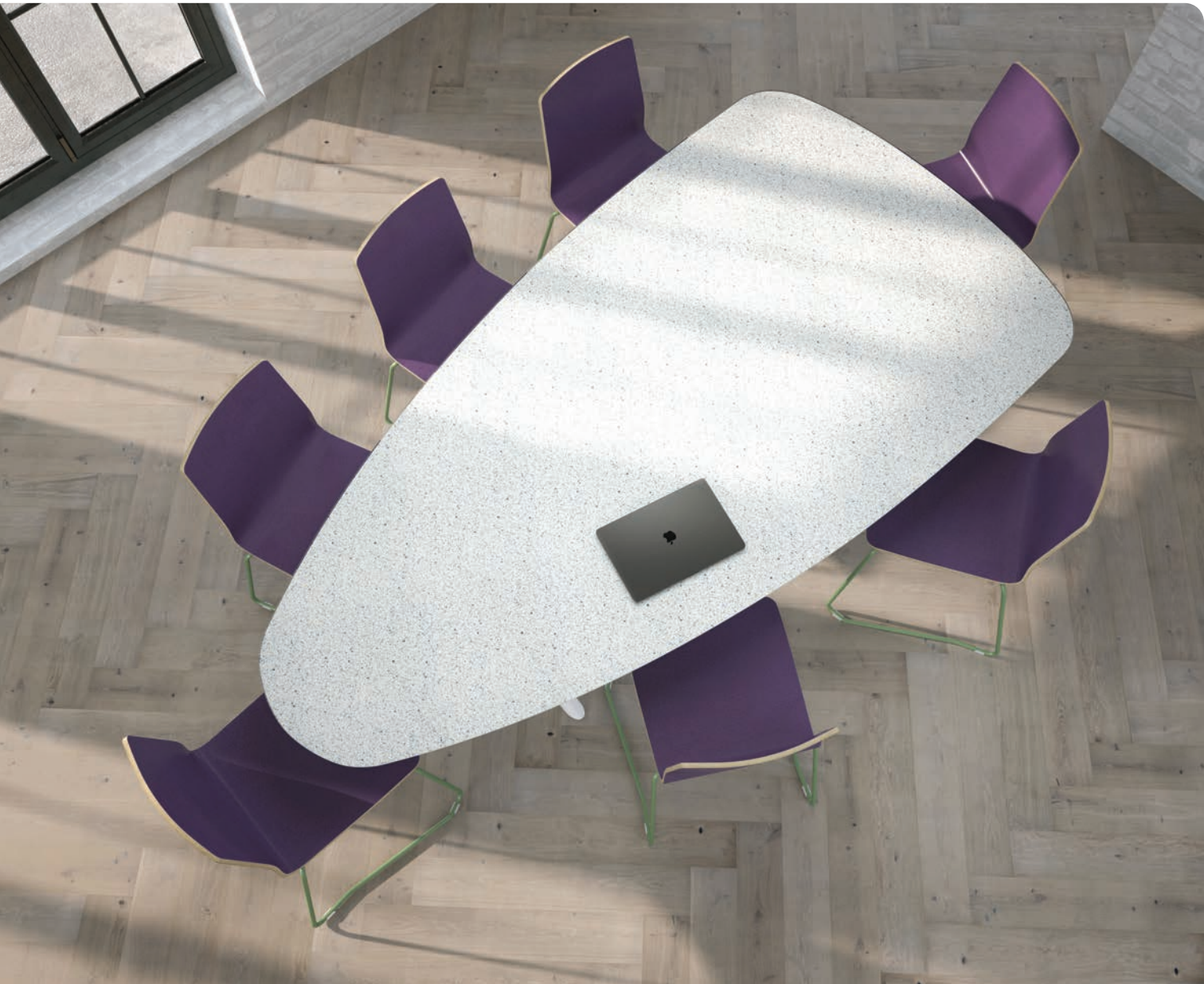
The ladder option provides 5" of height adjustment between 26" and 31".

Reaching New Heights

As today's work and learning environments are rapidly changing, adapting to human needs means offering options for every preferred working style. Ladder, crank, and electric mechanisms allow users to adjust for sitting, standing, and inclusive-design requirements with our Acute, Tubular, and Manhattan tables.

Thinking Outside the Box

Table options aren't limited to what you see here. Customizing is our specialty, and if you need something different from our standard offering, let us know—we can help you bring it to life! From solid-surface or glass-top tables to custom top shapes, it's all about finding the right fit.



Ark Top: Corian, Laguna Terrazzo; Base: RAL 9016
Jazzy Shell: Wilsonart, Y0864 Eggplant; Shell Edge: Clear Coat; Frame: RAL 6011.



Acute



Ark



Conductor



Factory



Latch



Manhattan



Post Leg



Trumpet & Flat Metal Base



Tubular



Varsity



Yorkville

Power and Accessories

Our General Purpose tables can be outfitted to meet the functional requirements of many different spaces. A rich offering of power modules, wire managers, storage solutions, and privacy accessories are at your disposal.



A variety of built-in or clamp-on power and data modules are available.



Wire managers neatly conceal cords for a clean aesthetic.



Table carts are available to store folding tables when not in use.



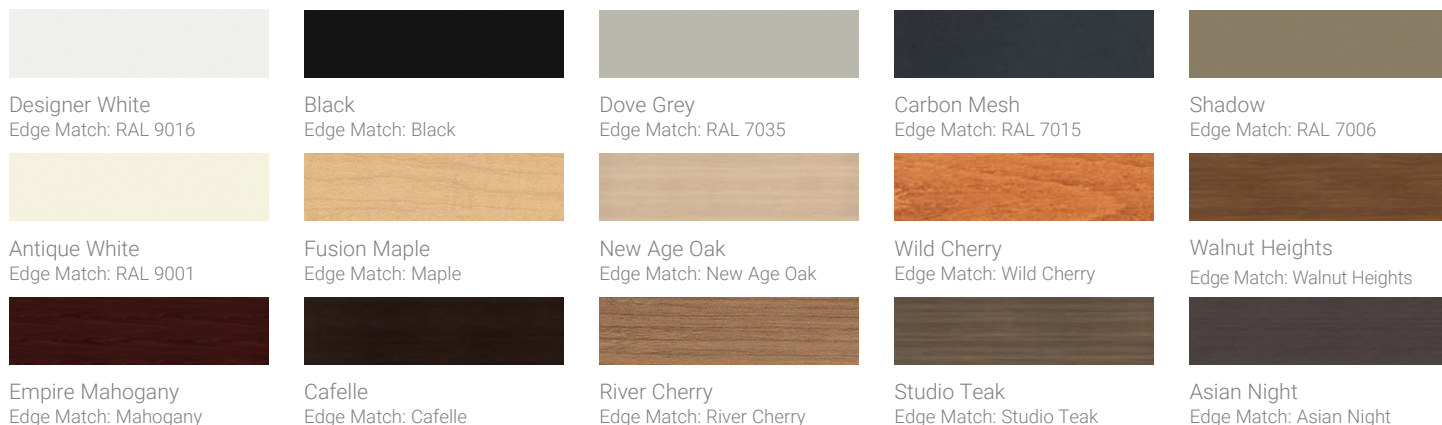
Wood, laminate, acrylic, and metal modesty panels are available in a variety of designs—as well as contrasting or matching colors.

Make It Your Own

Four height options and a variety of table top shapes to choose from—along with our 76 Spectone finishes and a nearly unlimited choice of laminates—make it easy to specify a table for any space.

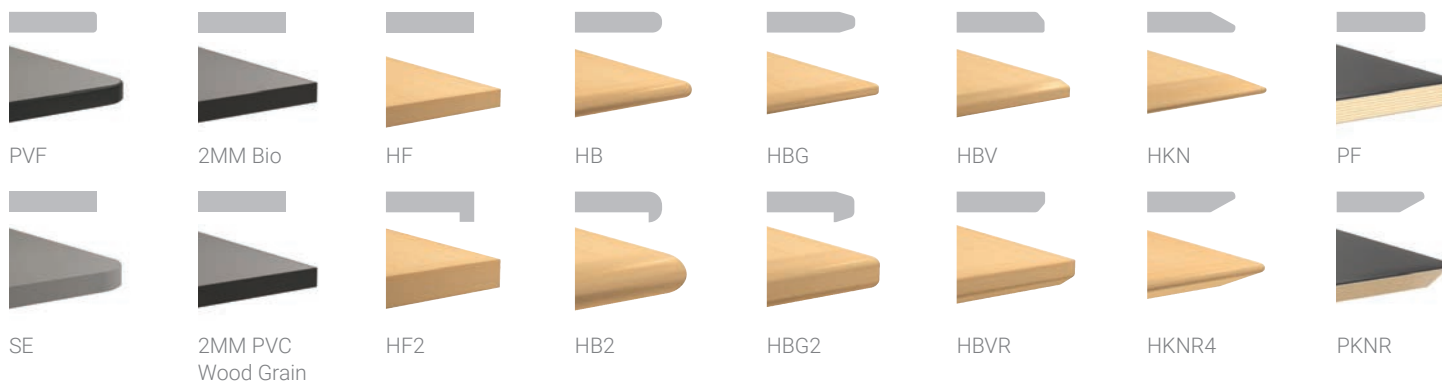
Laminates

Select from our 15 standard Wilsonart laminates, or choose any other standard Wilsonart, Nevamar, Formica, Arborite, or Pionite laminates for no extra charge.



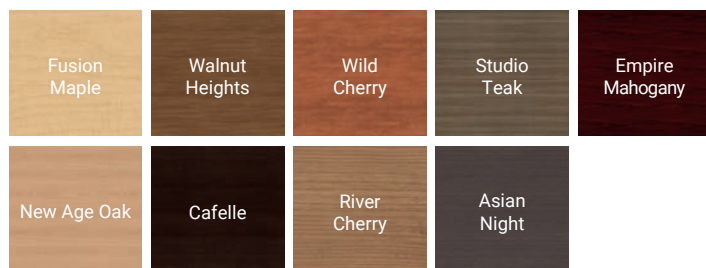
Edges

Edges are available in the profiles below. From hardwood and Baltic birch plywood to Bio Edge options, our edges are made to last.



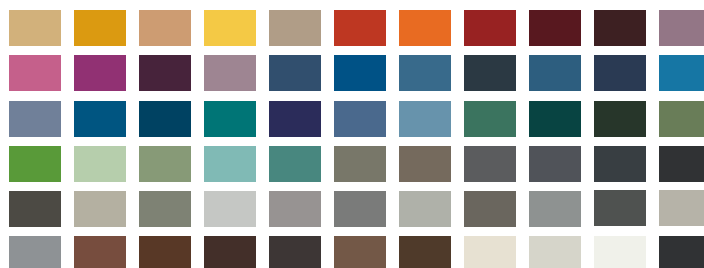
Veneer, 2MM Wood Grain, and Hardwood Edge Finishes

Veneer, 2mm wood grain, and hardwood edges are available in nine standard wood stains. Stain-to-match is available for no extra charge.



Frame, PVC Edge, and 2MM Bio Edge Finishes

Choose from 76 Spectone colors in our line of powder epoxy coatings, including five textured finishes. You can also select from 38 matching PVC flat edge and 2mm Bio Edge finishes.



Tel: 416 246 5550
Fax: 416 246 5549

Toll Free: 1 888 761 7732
specit@specfurniture.com

specfurniture.com



Spec Furniture is a registered trademark of Spec Furniture Inc. Product designers: Manhattan by John Edwards at Hatch Design; Conductor by James Hayward at Hayward Design; Eighteen5 by Conrad Marini. Spec is proud of the contribution of our design team and our employees.