

Hashtag GR4  
Hopsack GR3  
Lara GR2  
Median GR5  
Meteor GR6  
Nishiki 2.0 GR3  
Touchstone GR3



# Stinson®

## Healthcare + Education Collection IV

Visit the Stinson  
See/Sample/Spec  
sample room at  
[specfurniture.com](http://specfurniture.com).  
View all Stinson patterns  
with their respective  
Spec grades and order  
memo samples directly  
from the site.

Click on  
**Stinson**  
SEE / SAMPLE / SPEC

Meteor



MET54 Cliff



MET55 Rain

Hashtag



HAS55 Twine



HAS56 Cliff



HAS53 Tranquil



HAS50 Marina



TOU61 Creekside



TOU60 Squash



TOU57 Tranquil



TOU73 Gunmetal

Touchstone



TOU55 Astoria



TOU66 Owl



TOU69 Oasis



TOU70 Bay



TOU72 Sparrow



TOU80 Soho



TOU75 Mallard



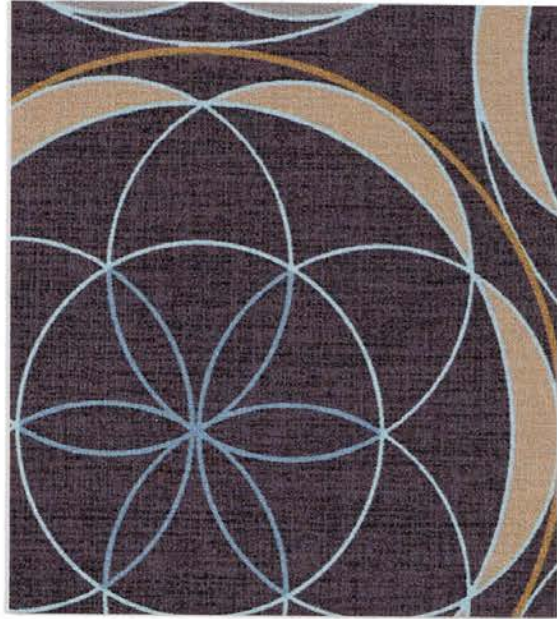
TOU76 Admiral



Meteor



MET53 March



MET52 Pastoral

Median



MED12 Fava



MED13 Blue Nile



MED10 Hydro



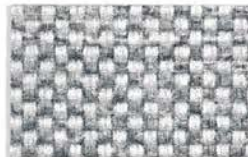
MED14 Skipper



HOP10 Stucco



HOP12 Twine



HOP11 Oslo



HOP21 Alloy

Hopsack



HOP20 Willow



HOP15 Bamboo



HOP24 Fjord



HOP26 Earth



HOP17 Carbon



HOP27 Shadow



HOP23 Mystic



HOP22 Cori



Nishiki 2.0



NIH252 Soba



NIH255 Silver



NIH261 Oribe



NIH256 Celadon



NIH254 Sumi



NIH260 Obi



NIH266 Peacock



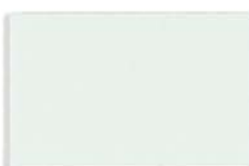
NIH270 Shibori



LRA73 Pumice



LRA78 Barre



LRA83 Minty



LRA85 Lake



LRA86 Gate



LRA62 Red Earth



LRA88 Hydro



LRA89 Champion



LRA87 Haze



LRA77 Cordovan



LRA90 Bahama



LRA99 Mid-Blue

Lara



LRA50 Stone



LRA91 Kitten



LRA95 Tranquil



LRA104 Evening



LRA75 Tawny



LRA96 Hearth



LRA100 Wizard



LRA105 Mystery



LRA92 Mink



LRA101 Tempest



LRA106 Java



LRA107 Pitch

## PERFORMANCE

- Fluid-barrier protection
- Extreme durability: 100,000 to 1,300,000 double rubs
- Advanced soil + stain protection
- Denim Stain Resistant
- CFFA-Healthcare-201 Certified\*

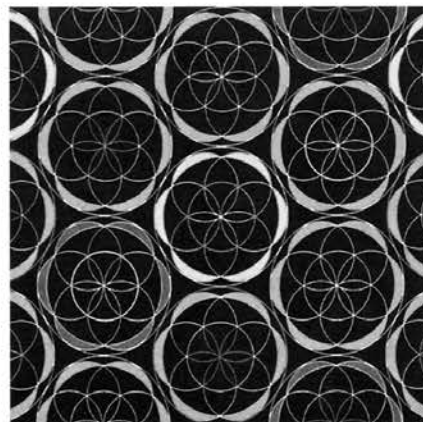
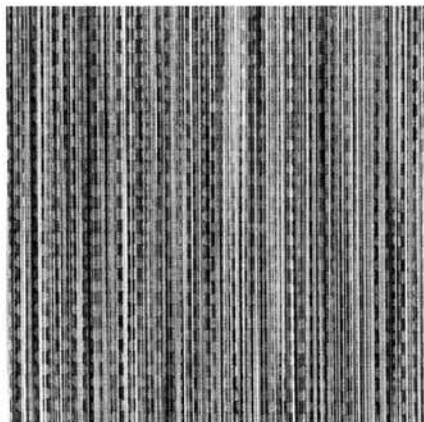
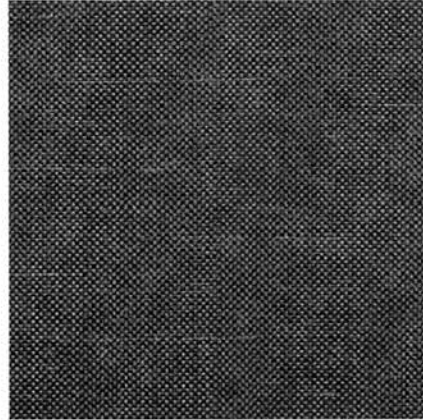
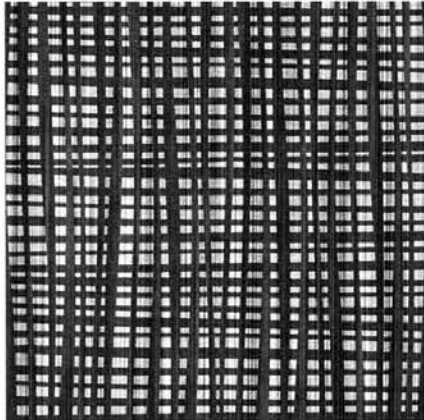
\*CFFA-Healthcare-201 Certified: This certification provides specifiers confidence in identifying Appropriate Coated Fabrics for Healthcare, Education, and other environments that demand Durability and Cleanability.

## SUSTAINABILITY

- GREENGUARD certified
- REACH and RoHS Compliant
- No PFAS, fluorocarbons or perfluorinated compounds
- No added flame retardants or antimicrobials
- Formulated without Phthalates

## CLEANABILITY

- Bleach-solution cleanable
- Tested and approved for compatibility with a multitude of disinfectants and cleaners.
- Individual Care Guides for each pattern are available at [cfstinson.com](http://cfstinson.com)








To request additional cleaning and maintenance information, including verification of a disinfectant being tested for use with these materials, please contact CF Stinson at 800.841.6279 or visit [cfstinson.com](http://cfstinson.com).

## Specifications

Pattern	Fiber Content and Finish	Abrasion Resistance ◇ (Wyzenbeek)	Cleaning Code
Hashtag	Non-Phthalate Vinyl Surface with Polyester Backing Zeron Protective Finish	100,000 D.R.	W
Hopsack	Non-Phthalate Vinyl Surface with Polyester Backing Advanced Soil and Stain Resistant Top Coat	100,000 D.R.	W
Lara	Non-Phthalate Vinyl Surface with Polyester Backing Advanced Soil and Stain Resistant Top Coat	1,300,000 D.R.	W
Median	Non-Phthalate Vinyl Surface with Polyester Backing Zeron Protective Finish	100,000 D.R.	W
Meteor	Non-Phthalate Vinyl Surface with Polyester Backing Advanced Soil and Stain Resistant Top Coat	100,000 D.R.	W
Nishiki 2.0	Non-Phthalate Vinyl Surface with Polyester Backing Advanced Soil and Stain Resistant Top Coat	250,000 D.R.	W-S
Touchstone	Non-Phthalate Vinyl Surface with Polyester Backing Advanced Soil and Stain Resistant Top Coat	250,000 D.R.	W-S

All patterns are 54" wide. Dye lots may vary slightly from samples shown.

All patterns meet the flammability requirements of California Technical Bulletin 117-2013, Section 1, NFPA 260 - Class 1 and UFAC. Some patterns have been tested for other flammability specifications; please visit [cfstinson.com](http://cfstinson.com) for comprehensive test results.

These patterns meet or exceed these ACT Performance standards for upholstery:     

◇ Wyzenbeek results above 100,000 double rubs have not been shown to be a reliable indicator of increased coated fabric lifespan.



These patterns have achieved GreenGuard Indoor Air Quality Certification.

### Stinson Grade-In / Memo Samples.

The entire Stinson collection is graded into the Spec standard program. Visit [specfurniture.com](http://specfurniture.com) and click on 'Fabrics' to view Stinson patterns and their respective Spec grades and to order memo samples.

### Cleaning and Maintenance

Refer to [cfstinson.com](http://cfstinson.com) for pattern-specific Care Guides.

Care Guides list specific cleaners and disinfectants approved for use on each individual pattern.



SPEC FURNITURE INC.  
165 City View Drive  
Toronto, ON M9W 5B1

W [specfurniture.com](http://specfurniture.com)  
P 888 761 7732  
F 416 246 5549



C.F. Stinson, LLC  
2849 Product Drive  
Rochester Hills, MI 48309

W [cfstinson.com](http://cfstinson.com)  
P 800 841 6279  
F 248 299 3884