



Pricing May 2023
Discount 57.7% from List prices

spec

MAS SIN 33721

COMPANION Lounge Seating

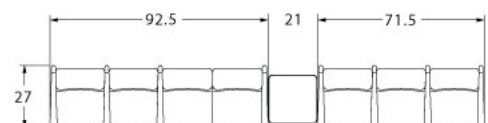
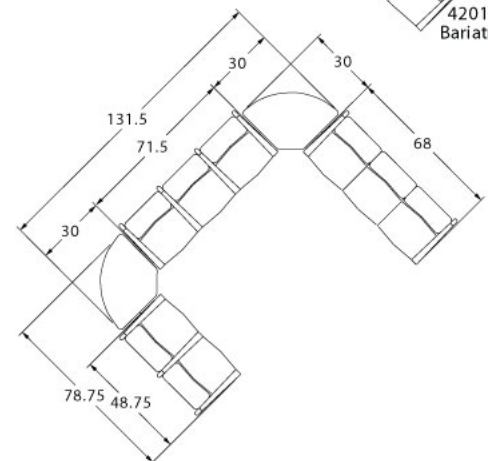
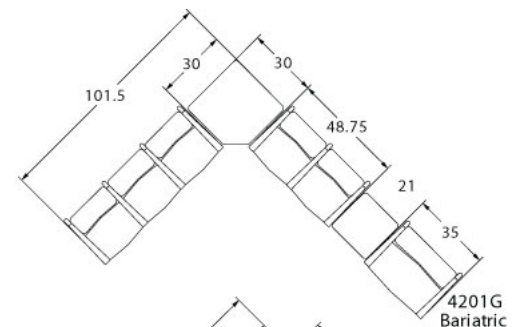
LAYOUTS



Description

- Spec presents the high performance Companion Series, offering warmth, durability, value and an unbeatable array of options and features.
- Your layout possibilities are unlimited with spacer, radius and corner tables – for both standard and bariatric seating in virtually any combination.
- Bariatric seating is a 30" wide seat and is load tested to 750 lbs. Cannot be connected to other bariatric seats.
- VELCRO® removable seats and backs are standard.
- 21" seat width is standard.
- Choice of wood or polyurethane arms which are replaceable in the field.
- High and medium back contours fit perfectly and provide exceptional comfort.
- All models offer a choice of no center arms, half arms or full arms to the floor.
- A 5° seat pitch is standard. An optional 7° pitch can be specified for no extra charge. A 3° pitch may be specified at an upcharge.
- 1.75" diameter wall-saving frame is standard to protect both wall and fabric.
- Rear glides and separate seat and back are standard.
- Please send a drawing of the configuration you require with your order.
- For fabrics you wish railroaded or repeats larger than 5" x 5", please contact the factory with repeat information and yardage requirement will be provided.

LAYOUTS AND DIMENSIONS





Pricing May 2023
Discount 57.7% from List prices

spec

MAS SIN 33721

COMPANION Lounge Seating



PRODUCT CODE

4201M

Series

42 : Companion

Arm/Other

0 : Outside Arms
1 : Half Arms
2 : Full Arms
3 : Easy Access Hip Chair

Number of Seats

1 : Single Seater
2 : Two Seater
3 : Three Seater

Chair Type

M : Mid Back
H : Highback
G : Bariatric
ME : Hip Chair

OPTIONS

SEAT PITCH



3°, 5° (standard) or
7° Seat Pitch

ARM TYPE



Polyurethane



Wood

HALF PANEL ARM



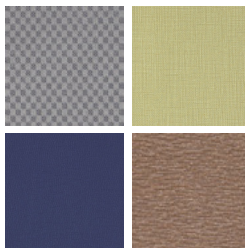
FINISHES

FRAME



Select from one of our 76 standard Spectone colors

FABRIC



Select fabrics from one of our
textile partners

ARMS



Black

Sterling Grey

Taupe

Select from one of our
9 standard wood stains
or stain-to-match for no
extra charge

See Spectone Card or specfurniture.com/tools-and-resources/product-resources/finishes
for a complete list of finish options and colors.



Pricing May 2023
Discount 57.7% from List prices



COMPANION Lounge Seating

MAS SIN 33721

HOW TO ORDER



Specify Model

- A Specify Fabric - Seat¹
Manufacturer, Pattern Name, Color
- B Specify Fabric - Back¹
Manufacturer, Pattern Name, Color
- C Specify Frame Finish
- D Specify Arm Type and Color

Optional: 3°/7° Seat Pitch, CAL 133, Moisture Barrier, Half Panel Arm, Connecting and Freestanding Tables, Ottoman, Vinyl Headrest Insert



¹ When multiple fabrics are specified on two and three seat chairs, please provide a drawing and legend for fabric placement.

Model	Fabric - Seat	Fabric - Back	Frame Finish	Arm Type and Color	Seat Pitch
4201M	Momentum, Beeline, Canvas	Momentum, Beeline, Canvas	Silver	Polyurethane, Black	5°



Pricing May 2023
Discount 57.7% from List prices



MAS SIN 33721

COMPANION Lounge Seating

Medium Back Single Seater with arms

Standard Features

- Separate seat and back
- Polyurethane arms or wood arms
- Fully welded 1.75" frame
- Frame in any Spectone color
- VELCRO® removable seat and back covers
- 5° seat pitch
- Use in connected layouts for no extra charge
- Glides
- Arms replaceable in the field
- Ships assembled
- Ships 1/carton 15 cu ft

Contact Spec Customer Service to railroad fabrics (specify repeat info and yardage requirement will be provided) and for repeats greater than 5" x 5"

Options

- Polyurethane arms are available in Black, Sterling Grey and Taupe (RAL 7006)
- Wood arms are available in 9 standard stains and stain-to-match for no extra charge
- 7° seat pitch for no extra charge; 3° seat pitch, add \$29 List per seat
- Connected and freestanding tables
- Antibacterial and antimicrobial fabrics available
- Different fabric on seat and back for no extra charge
- CAL 133



Medium Back Single Seater with arms

COM 2.0 yds

1.0 yd COM per single seat

1.0 yd COM per single back

MODEL	COM	GR 1	GR 2	GR 3	GR 4	GR 5	GR 6
4201M	1484	1630	1676	1777	1916	2029	2175

Dimensions (inches)

seat H	18.0	seat W	21.0	arm H	27.0
total H	32.5	total W	26.0	depth	27.0

Meets BIFMA Seating Durability Test to 500 lbs per chair
CAL 133, add \$136 List per chair



4201M
45 lbs



Pricing May 2023
Discount 57.7% from List prices

spec™

MAS SIN 33721

COMPANION Lounge Seating

Medium Back Two and Three Seaters with outside arms

Standard Features

- Separate seat and back
- Polyurethane arms or wood arms
- Fully welded 1.75" frame
- Frame in any Spectone color
- VELCRO® removable seat and back covers
- 5° seat pitch
- Use in connected layouts for no extra charge
- Glides
- Arms replaceable in the field
- Ships assembled
- Ships 1/carton 26 cu ft (2 seater),
1/carton 39 cu ft (3 seater)

Options

- Polyurethane arms are available in Black, Sterling Grey and Taupe (RAL 7006)
- Wood arms are available in 9 standard stains and stain-to-match for no extra charge
- 7° seat pitch for no extra charge; 3° seat pitch, add \$29 List per seat
- Connected and freestanding tables
- Antibacterial and antimicrobial fabrics available
- Different fabric on seat and back for no extra charge
- CAL 133

Contact Spec Customer Service to railroad fabrics (specify repeat info and yardage requirement will be provided) and for repeats greater than 5" x 5"



Medium Back Two Seater with outside arms

COM 4.0 yds

1.0 yd COM per single seat

1.0 yd COM per single back

MODEL	COM	GR 1	GR 2	GR 3	GR 4	GR 5	GR 6
4202M	2271	2563	2660	2852	3146	3364	3655

Dimensions (inches)

seat H	18.0	seat W	21.0	arm H	27.0
total H	32.5	total W	47.0	depth	27.0

Meets BIFMA Seating Durability Test to 500 lbs per two seater
CAL 133, add \$272 List per two seater



4202M
75 lbs

Medium Back Three Seater with outside arms

COM 6.0 yds

1.0 yd COM per single seat

1.0 yd COM per single back

MODEL	COM	GR 1	GR 2	GR 3	GR 4	GR 5	GR 6
4203M	3081	3516	3662	3952	4385	4719	5153

Dimensions (inches)

seat H	18.0	seat W	21.0	arm H	27.0
total H	32.5	total W	68.0	depth	27.0

Meets BIFMA Seating Durability Test to 500 lbs per three seater
CAL 133, add \$408 List per three seater



4203M
105 lbs



Pricing May 2023
Discount 57.7% from List prices

spec™

MAS SIN 33721

COMPANION Lounge Seating

Medium Back Two and Three Seaters with half arms

Standard Features

- Separate seat and back
- Polyurethane arms or wood arms
- Fully welded 1.75" frame
- Frame in any Spectone color
- VELCRO® removable seat and back covers
- 5° seat pitch
- Use in connected layouts for no extra charge
- Glides
- Arms replaceable in the field
- Ships assembled
- Ships 1/carton 26 cu ft (2 seater),
1/carton 39 cu ft (3 seater)

Options

- Polyurethane arms are available in Black, Sterling Grey and Taupe (RAL 7006)
- Wood arms are available in 9 standard stains and stain-to-match for no extra charge
- 7° seat pitch for no extra charge; 3° seat pitch, add \$29 List per seat
- Connected and freestanding tables
- Antibacterial and antimicrobial fabrics available
- Different fabric on seat and back for no extra charge
- CAL 133

Contact Spec Customer Service to railroad fabrics (specify repeat info and yardage requirement will be provided) and for repeats greater than 5" x 5"



Medium Back Two Seater with half arms

COM 4.0 yds

1.0 yd COM per single seat

1.0 yd COM per single back

MODEL	COM	GR 1	GR 2	GR 3	GR 4	GR 5	GR 6
4212M	2541	2833	2930	3121	3413	3631	3926

Dimensions (inches)

seat H	18.0	seat W	21.0	arm H	27.0
total H	32.5	total W	48.75	depth	27.0

Meets BIFMA Seating Durability Test to 500 lbs per two seater
CAL 133, add \$272 List per two seater



4212M
79 lbs

Medium Back Three Seater with half arms

COM 6.0 yds

1.0 yd COM per single seat

1.0 yd COM per single back

MODEL	COM	GR 1	GR 2	GR 3	GR 4	GR 5	GR 6
4213M	3516	3948	4095	4385	4821	5153	5590

Dimensions (inches)

seat H	18.0	seat W	21.0	arm H	27.0
total H	32.5	total W	71.5	depth	27.0

Meets BIFMA Seating Durability Test to 500 lbs per three seater
CAL 133, add \$408 List per three seater



4213M
114 lbs



Pricing May 2023
Discount 57.7% from List prices

spec™

MAS SIN 33721

COMPANION Lounge Seating

Medium Back Two and Three Seaters with full arms

Standard Features

- Separate seat and back
- Polyurethane arms or wood arms
- Fully welded 1.75" frame
- Frame in any Spectone color
- VELCRO® removable seat and back covers
- 5° seat pitch
- Use in connected layouts for no extra charge
- Glides
- Arms replaceable in the field
- Ships assembled
- Ships 1/carton 26 cu ft (2 seater),
1/carton 39 cu ft (3 seater)

Options

- Polyurethane arms are available in Black, Sterling Grey and Taupe (RAL 7006)
- Wood arms are available in 9 standard stains and stain-to-match for no extra charge
- 7° seat pitch for no extra charge; 3° seat pitch, add \$29 List per seat
- Connected and freestanding tables
- Antibacterial and antimicrobial fabrics available
- Different fabric on seat and back for no extra charge
- CAL 133

Contact Spec Customer Service to railroad fabrics (specify repeat info and yardage requirement will be provided) and for repeats greater than 5" x 5"



Medium Back Two Seater with full arms

COM 4.0 yds

1.0 yd COM per single seat

1.0 yd COM per single back

MODEL	COM	GR 1	GR 2	GR 3	GR 4	GR 5	GR 6
4222M	2580	2870	2969	3161	3454	3671	3963

Dimensions (inches)

seat H	18.0	seat W	21.0	arm H	27.0
total H	32.5	total W	48.75	depth	27.0

Meets BIFMA Seating Durability Test to 500 lbs per two seater
CAL 133, add \$272 List per two seater



4222M
82 lbs

Medium Back Three Seater with full arms

COM 6.0 yds

1.0 yd COM per single seat

1.0 yd COM per single back

MODEL	COM	GR 1	GR 2	GR 3	GR 4	GR 5	GR 6
4223M	3695	4131	4281	4569	5006	5337	5772

Dimensions (inches)

seat H	18.0	seat W	21.0	arm H	27.0
total H	32.5	total W	71.5	depth	27.0

Meets BIFMA Seating Durability Test to 500 lbs per three seater
CAL 133, add \$408 List per three seater



4223M
120 lbs



Pricing May 2023
Discount 57.7% from List prices



MAS SIN 33721

COMPANION Lounge Seating

Medium Back Bariatric Single Seater with arms

Standard Features

- Separate seat and back
- Polyurethane arms or wood arms
- Fully welded 1.75" frame
- Frame in any Spectone color
- VELCRO® removable seat and back covers
- 5° seat pitch
- Use in connected layouts for no extra charge
- Glides
- Arms replaceable in the field
- Cannot connect bariatric seating to bariatric seating
- Ships assembled
- Ships 1/carton 20 cu ft

Options

- Polyurethane arms are available in Black, Sterling Grey and Taupe (RAL 7006)
- Wood arms are available in 9 standard stains and stain-to-match for no extra charge
- Connected and freestanding tables
- Antibacterial and antimicrobial fabrics available
- Different fabric on seat and back for no extra charge
- CAL 133

Contact Spec Customer Service to railroad fabrics (specify repeat info and yardage requirement will be provided) and for repeats greater than 5" x 5"



Medium Back Bariatric Single Seater with arms

COM 3.25 yds

1.5 yd COM per single seat

1.75 yd COM per single back

MODEL	COM	GR 1	GR 2	GR 3	GR 4	GR 5	GR 6
4201G	1758	2007	2088	2256	2503	2695	2943

Dimensions (inches)

seat H	18.0	seat W	30.0	arm H	27.0
total H	32.5	total W	35.0	depth	27.0

Meets BIFMA Seating Durability Test to 750 lbs per chair
CAL 133, add \$206 List per chair



4201G
56 lbs



Pricing May 2023
Discount 57.7% from List prices

spec

MAS SIN 33721

COMPANION Lounge Seating

Highback Single Seater with arms
Ottoman

Standard Features

- Separate seat and back
- Polyurethane arms or wood arms
- Fully welded 1.75" frame
- Frame in any Spectone color
- VELCRO® removable seat and back covers
- 5° seat pitch
- Use in connected layouts for no extra charge
- Glides
- Arms replaceable in the field
- Ships assembled
- Ships 1/carton 19 cu ft
- Ottoman ships 1/carton 5 cu ft

Options

- Polyurethane arms are available in Black, Sterling Grey and Taupe (RAL 7006)
- Wood arms are available in 9 standard stains and stain-to-match for no extra charge
- 7° seat pitch for no extra charge; 3° seat pitch, add \$29 List per seat
- Vinyl insert on top of the back, add \$53 List/seat back
- Connected and freestanding tables
- Antibacterial and antimicrobial fabrics available
- Different fabric on seat and back for no extra charge
- CAL 133

Contact Spec Customer Service to railroad fabrics (specify repeat info and yardage requirement will be provided) and for repeats greater than 5" x 5"



Highback Single Seater with arms

COM 2.25 yds

1.0 yd COM per single seat

1.25 yd COM per single back

MODEL	COM	GR 1	GR 2	GR 3	GR 4	GR 5	GR 6
4201H	1562	1720	1777	1881	2042	2163	2324

Dimensions (inches)

seat H	18.0	seat W	21.0	arm H	27.0
total H	45.0	total W	26.0	depth	27.0

Meets BIFMA Seating Durability Test to 500 lbs per chair
CAL 133, add \$171 List per chair



4201H
48 lbs

Ottoman

0.5 yd COM per ottoman

MODEL	COM	GR 1	GR 2	GR 3	GR 4	GR 5	GR 6
4230F	535	578	593	624	669	703	762

Ottoman Dimensions (inches)

H	11.5	W	19.25	depth	12.25
---	------	---	-------	-------	-------

CAL 133, add \$70 List



4230F
16 lbs



Pricing May 2023
Discount 57.7% from List prices



MAS SIN 33721

COMPANION Lounge Seating

Half Panel Arm

To order half panel arms, add Z to model number,
e.g. 4201HZ

***Pricing is for one half panel arm, e.g. for a single
seater chair with half panel arms, add two half panel
arms to cost of chair***

*Contact Spec Customer Service to railroad fabrics
(specify repeat info and yardage requirement will
be provided) and for repeats greater than 5" x 5"*

Options

- Antibacterial and antimicrobial fabrics available
- CAL 133 fire barrier



Half Panel Arm

COM 0.5 yds per half panel arm

MODEL	COM	GR 1	GR 2	GR 3	GR 4	GR 5	GR 6
z	119	161	174	208	262	295	330

CAL 133 fire barrier, add \$64 List per half panel arm



1.5 lbs per half panel arm



Pricing May 2023
Discount 57.7% from List prices



MAS SIN 33721

COMPANION Lounge Seating

Medium Back Easy Access Hip Single Seater with arms

Standard Features

- Separate seat and back
- Polyurethane arms or wood arms
- Fully welded 1.75" frame
- Frame in any Spectone color
- VELCRO® removable seat and back covers
- 24" seat height, 3° seat pitch
- Footrest which assists entering/exiting chair
- Glides
- Arms replaceable in the field
- Ships assembled
- Ships 1/carton 19 cu ft

Options

- Polyurethane arms are available in Black, Sterling Grey and Taupe (RAL 7006)
- Wood arms are available in 9 standard stains and stain-to-match for no extra charge
- Antibacterial and antimicrobial fabrics available
- Different fabric on seat and back for no extra charge
- CAL 133 fire barrier

Contact Spec Customer Service to railroad fabrics (specify repeat info and yardage requirement will be provided) and for repeats greater than 5" x 5"



Medium Back Easy Access Hip Single Seater with arms

COM 2.0 yds
1.0 yd COM per single seat
1.0 yd COM per single back

MODEL	COM	GR 1	GR 2	GR 3	GR 4	GR 5	GR 6
4231ME	1622	1767	1813	1913	2055	2166	2313

Dimensions (inches)

seat H	24.0	seat W	21.0	arm H	33.75
total H	39.75	total W	26.0	depth	27.0

Meets BIFMA Seating Durability Test to 500 lbs per chair
CAL 133 fire barrier, add \$136 List per chair



4231ME
47 lbs



Pricing May 2023
Discount 57.7% from List prices

spec™

MAS SIN 33721

COMPANION Lounge Seating

Freestanding Lounge Tables

Corner and Spacer Connecting Tables

Standard Features

- Tops in laminate or veneer
- Select laminate tops from 15 standard laminates or choose any standard Wilsonart, Nevamar, Formica, Arborite and Pionite matte finish laminates for no extra charge.
- Freestanding lounge tables available with PVC Flat (PVF), 2mm (2MM), exposed Baltic Birch plywood (PF, PKNR) or hardwood (HB) edge
- Connecting table tops available with PVC Flat (PVF) edge, Self edge (SE) or hardwood (HB) edge
- 9 standard veneer and hardwood edge stains. Stain-to-match available for no extra charge.
- Fully welded frame with 1.75" steel legs
- Frame in any Spectone color
- Tops utilize NU Green earth friendly core
- Glides
- 18" height

Options

- Non-standard laminates, contact Spec for pricing
- Custom size spacer tables for restricted spaces
- Other sizes may be available



Freestanding Lounge Tables

Model	Laminate PVF/SE/2MM	Laminate PF/PKNR/HB	Veneer HB	Weight	Cu.Ft.
42 - 24 DIA	1008	1463	1723	27	7.2
42 - 24x24 SQ	1047	1294	1489	30	7.2
42 - 24x48 RE	1251	1523	1798	44	18
42 - 30 DIA	1139	1589	1854	37	13.5
42 - 30x30 SQ	1182	1361	1570	40	13.5



Corner and Spacer Connecting Tables

Model	Laminate PVF/SE	Weight	Cu.Ft.
42RC - 30x30 <i>Radius Corner Table</i>	892	31	2
42SC - 30x30 <i>Square Corner Table</i>	892	32	2
42TC45 - 19x23 <i>45 Degree Corner Table</i>	892	26	2
42ST - 21x24 <i>Spacer or End Table</i>	687	23	2

