



Pricing May 2023  
Discount 57.7% from List prices

**spec**

MAS SIN 33721

## COOPER COLLECTION - MIDLAND Lounge Seating

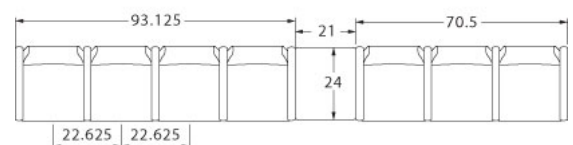
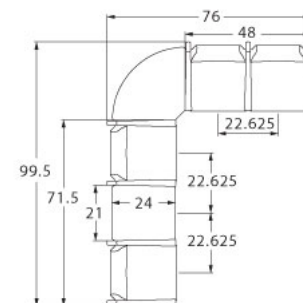
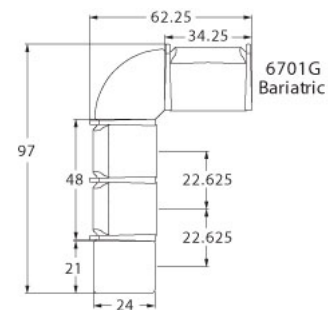
### LAYOUTS



### Description

- Spec's Midland offers a lighter, residential feel at a value price with extensive environmental considerations.
- Your layout possibilities are unlimited with spacer, radius and corner tables – for both standard and bariatric seating in virtually any combination.
- Bariatric seating is a 30" wide seat and is load tested to 750 lbs. Cannot be connected to other bariatric seats.
- 21" seat width is standard.
- Standard in European Beech in any of 9 standard stains or stain-to-match for no extra charge.
- Choice of wood or polyurethane arm caps which are replaceable in the field.
- All models offer a choice of no center arms, half arms or full arms to the floor.
- Wall-saving frame is standard to protect both wall and fabric.
- Glides and separate seat and back are standard.
- Please send a drawing of the configuration you require with your order.
- Ships assembled as one, two and three seater units.
- For fabrics you wish railroaded or repeats larger than 5" x 5", please contact the factory with repeat information and yardage requirement will be provided.

### LAYOUTS AND DIMENSIONS





Pricing May 2023  
Discount 57.7% from List prices

**spec**

MAS SIN 33721

## COOPER COLLECTION - MIDLAND Lounge Seating



### PRODUCT CODE

**6 7 2 3 M**

#### Collection

6 : Cooper

#### Series

7 : Midland

#### Center Arm

0 : Outside Arms

1 : Half Arms

2 : Full Arms

#### Number of Seats

1 : Single Seater

2 : Two Seater

3 : Three Seater

#### Chair Type

M : Mid Back

H : Highback

L : Loveseat

G : Bariatric



### OPTIONS

#### ARM CAP



Polyurethane

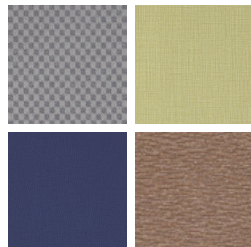
### FINISHES

#### FRAME



Select from one of our 9 standard wood stains or stain-to-match for no extra charge

#### FABRIC



Select fabrics from one of our textile partners

#### ARM CAP



Select from one of our 9 standard wood stains or stain-to-match at no upcharge

See Spectone Card or [specfurniture.com/tools-and-resources/product-resources/finishes](http://specfurniture.com/tools-and-resources/product-resources/finishes) for a complete list of finish options and colors.



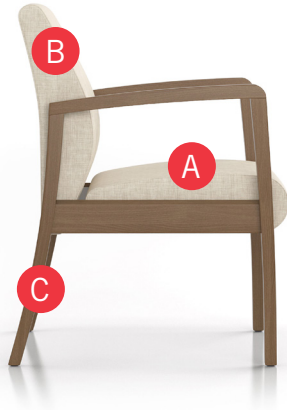
Pricing May 2023  
Discount 57.7% from List prices



## COOPER COLLECTION - MIDLAND Lounge Seating

MAS SIN 33721

### HOW TO ORDER



#### Specify Model

- A Specify Fabric - Seat<sup>1</sup>  
*Manufacturer, Pattern Name, Color*
- B Specify Fabric - Back<sup>1</sup>  
*Manufacturer, Pattern Name, Color*
- C Specify Frame Finish

Optional: Polyurethane Arm Cap, CAL 133, Moisture Barrier, Connecting and Freestanding Tables, Ottoman, Vinyl Headrest Insert

<sup>1</sup> When multiple fabrics are specified on two and three seat chairs, please provide a drawing and legend for fabric placement.



Model	Fabric - Seat	Fabric - Back	Frame Finish
6701M	Momentum, Beeline, Canvas	Momentum, Beeline, Canvas	Studio Teak Stain



Pricing May 2023  
Discount 57.7% from List prices

**spec**

MAS SIN 33721

## COOPER COLLECTION - MIDLAND Lounge Seating

Designed for today's healthcare facilities

Single Seater with arms

### Standard Features

- Separate seat and back
- Wood components in Beech, in any of 9 standard stains or stain-to-match for no extra charge
- Wall-saving frame
- VELCRO® removable back covers
- Replaceable seats
- Threaded replaceable glides
- Use in connected layouts for no extra charge
- Ships assembled as 1, 2 or 3 seaters
- Ships 1/carton 15 cu ft

### Options

- Replaceable polyurethane arm cap (P) available in Black, Sterling Grey and Taupe (RAL 7006) add \$118 List
- Connected and freestanding tables
- Antibacterial and antimicrobial fabrics available
- Different fabric on seat and back for no extra charge
- CAL 133

Contact Spec™ Customer Service to railroad fabrics (specify repeat info and yardage requirement will be provided) and for repeats greater than 5" x 5"



### Single Seater with arms

COM 1.75 yds

0.75 yd COM per single seat

1.0 yd COM per single back

MODEL	COM	GR 1	GR 2	GR 3	GR 4	GR 5	GR 6
<b>6701M</b>	<b>1146</b>	<b>1260</b>	<b>1296</b>	<b>1375</b>	<b>1486</b>	<b>1576</b>	<b>1689</b>

Dimensions (inches)

seat H	18.0	seat W	21.0	arm H	25.0
total H	33.75	total W	25.25	depth	26.25

Meets BIFMA Seating Durability Test to 500 lbs per chair  
CAL 133, add \$151 List per seat



**6701M**



Pricing May 2023  
Discount 57.7% from List prices

spec

MAS SIN 33721

## COOPER COLLECTION - MIDLAND Lounge Seating

Designed for today's healthcare facilities

Two and Three Seaters with outside arms

### Standard Features

- Separate seat and back
- Wood components in Beech, in any of 9 standard stains or stain-to-match for no extra charge
- Wall-saving frame
- VELCRO® removable back covers
- Replaceable seats
- Threaded replaceable glides
- Use in connected layouts for no extra charge
- Ships assembled as 1, 2 or 3 seaters
- Ships 1/carton 26 cu ft (2 seater),  
1/carton 39 cu ft (3 seater)

### Options

- Replaceable polyurethane arm cap (P) available in Black, Sterling Grey and Taupe (RAL 7006) add \$118 List
- Connected and freestanding tables
- Antibacterial and antimicrobial fabrics available
- Different fabric on seat and back for no extra charge
- CAL 133

Contact Spec Customer Service to railroad fabrics (specify repeat info and yardage requirement will be provided) and for repeats greater than 5" x 5"



### Two Seater with outside arms

COM 3.5 yds

0.75 yd COM per single seat

1.0 yd COM per single back

MODEL	COM	GR 1	GR 2	GR 3	GR 4	GR 5	GR 6
6702M	1783	2014	2088	2244	2469	2644	2877

Dimensions (inches)

seat H	18.0	seat W	21.0	arm H	25.0
total H	33.75	total W	44.75	depth	26.25

Meets BIFMA Seating Durability Test to 750 lbs per two seater  
CAL 133, add \$302 List per two seater



6702M

### Three Seater with outside arms

COM 5.25 yds

0.75 yd COM per single seat

1.0 yd COM per single back

MODEL	COM	GR 1	GR 2	GR 3	GR 4	GR 5	GR 6
6703M	2460	2802	2911	3151	3484	3749	4096

Dimensions (inches)

seat H	18.0	seat W	21.0	arm H	25.0
total H	33.75	total W	67.5	depth	26.25

Meets BIFMA Seating Durability Test to 1000 lbs per three seater  
CAL 133, add \$453 List per three seater



6703M



Pricing May 2023  
Discount 57.7% from List prices

spec

MAS SIN 33721

## COOPER COLLECTION - MIDLAND Lounge Seating

Designed for today's healthcare facilities  
Two and Three Seaters with half arms

### Standard Features

- Separate seat and back
- Wood components in Beech, in any of 9 standard stains or stain-to-match for no extra charge
- Wall-saving frame
- VELCRO® removable back covers
- Replaceable seats
- Threaded replaceable glides
- Use in connected layouts for no extra charge
- Ships assembled as 1, 2 or 3 seaters
- Ships 1/carton 26 cu ft (2 seater),  
1/carton 39 cu ft (3 seater)

### Options

- Replaceable polyurethane arm caps (P) available in Black, Sterling Grey and Taupe (RAL 7006) add \$177 List for 6722M, or \$236 List for 6723M
- Connected and freestanding tables
- Antibacterial and antimicrobial fabrics available
- Different fabric on seat and back for no extra charge
- CAL 133

Contact Spec Customer Service to railroad fabrics  
(specify repeat info and yardage requirement will  
be provided) and for repeats greater than 5" x 5"



### Two Seater with half arms

COM 3.5 yds  
0.75 yd COM per single seat  
1.0 yd COM per single back

MODEL	COM	GR 1	GR 2	GR 3	GR 4	GR 5	GR 6
<b>6712M</b>	<b>2014</b>	<b>2242</b>	<b>2317</b>	<b>2474</b>	<b>2698</b>	<b>2875</b>	<b>3106</b>

#### Dimensions (inches)

seat H	18.0	seat W	21.0	arm H	25.0
total H	33.75	total W	48.0	depth	26.25

Meets BIFMA Seating Durability Test to 750 lbs two seater  
CAL 133, add \$302 List per two seater



6712M

### Three Seater with half arms

COM 5.25 yds  
0.75 yd COM per single seat  
1.0 yd COM per single back

MODEL	COM	GR 1	GR 2	GR 3	GR 4	GR 5	GR 6
<b>6713M</b>	<b>2947</b>	<b>3292</b>	<b>3401</b>	<b>3636</b>	<b>3974</b>	<b>4240</b>	<b>4584</b>

#### Dimensions (inches)

seat H	18.0	seat W	21.0	arm H	25.0
total H	33.75	total W	70.5	depth	26.25

Meets BIFMA Seating Durability Test to 1000 lbs per three seater  
CAL 133, add \$453 List per three seater



6713M



Pricing May 2023  
Discount 57.7% from List prices

spec

MAS SIN 33721

## COOPER COLLECTION - MIDLAND Lounge Seating

Designed for today's healthcare facilities

Two and Three Seaters with full arms

### Standard Features

- Separate seat and back
- Wood components in Beech, in any of 9 standard stains or stain-to-match for no extra charge
- Wall-saving frame
- VELCRO® removable back covers
- Replaceable seats
- Threaded replaceable glides
- Use in connected layouts for no extra charge
- Ships assembled as 1, 2 or 3 seaters
- Ships 1/carton 26 cu ft (2 seater),  
1/carton 39 cu ft (3 seater)

### Options

- Replaceable polyurethane arm caps (P) available in Black, Sterling Grey and Taupe (RAL 7006) add \$177 List for 6722M, or \$236 List for 6723M
- Connected and freestanding tables
- Antibacterial and antimicrobial fabrics available
- Different fabric on seat and back for no extra charge
- CAL 133

Contact Spec Customer Service to railroad fabrics (specify repeat info and yardage requirement will be provided) and for repeats greater than 5" x 5"



### Two Seater with full arms

COM 3.5 yds  
0.75 yd COM per single seat  
1.0 yd COM per single back

MODEL	COM	GR 1	GR 2	GR 3	GR 4	GR 5	GR 6
<b>6722M</b>	<b>2014</b>	<b>2242</b>	<b>2317</b>	<b>2474</b>	<b>2698</b>	<b>2875</b>	<b>3106</b>

#### Dimensions (inches)

seat H	18.0	seat W	21.0	arm H	25.0
total H	33.75	total W	48.0	depth	26.25

Meets BIFMA Seating Durability Test to 750 lbs per two seater  
CAL 133, add \$302 List per two seater



6722M

### Three Seater with full arms

COM 5.25 yds  
0.75 yd COM per single seat  
1.0 yd COM per single back

MODEL	COM	GR 1	GR 2	GR 3	GR 4	GR 5	GR 6
<b>6723M</b>	<b>2947</b>	<b>3292</b>	<b>3401</b>	<b>3636</b>	<b>3974</b>	<b>4240</b>	<b>4584</b>

#### Dimensions (inches)

seat H	18.0	seat W	21.0	arm H	25.0
total H	33.75	total W	70.5	depth	26.25

Meets BIFMA Seating Durability Test to 1000 lbs per three seater  
CAL 133, add \$453 List per three seater



6723M



Pricing May 2023  
Discount 57.7% from List prices



MAS SIN 33721

## COOPER COLLECTION - MIDLAND Lounge Seating

Designed for today's healthcare facilities

Loveseat with arms

### Standard Features

- Separate seat and back
- Wood components in Beech, in any of 9 standard stains or stain-to-match for no extra charge
- Wall-saving frame
- VELCRO® removable back covers
- Replaceable seats
- Threaded replaceable glides
- Use in connected layouts for no extra charge
- Ships assembled as 1, 2 or 3 seaters
- Ships 1/carton 20 cu ft

### Options

- Replaceable polyurethane arm cap (P) available in Black, Sterling Grey and Taupe (RAL 7006) add \$118 List
- Connected and freestanding tables
- Antibacterial and antimicrobial fabrics available
- Different fabric on seat and back for no extra charge
- CAL 133

Contact Spec Customer Service to railroad fabrics (specify repeat info and yardage requirement will be provided) and for repeats greater than 5" x 5"



### Loveseat with arms

COM 3.5 yds

1.75 yd COM per single seat

1.75 yd COM per single back

MODEL	COM	GR 1	GR 2	GR 3	GR 4	GR 5	GR 6
6701L	1755	2024	2109	2293	2552	2759	3030

Dimensions (inches)

seat H	18.0	seat W	42.0	arm H	25.0
total H	33.75	total W	46.25	depth	26.25

Meets BIFMA Seating Durability Test to 750 lbs per chair  
CAL 133, add \$233 List per chair



6701L





Pricing May 2023  
Discount 57.7% from List prices

**spec**

MAS SIN 33721

## COOPER COLLECTION - MIDLAND Lounge Seating

Designed for today's healthcare facilities

Bariatric Single Seater with arms

### Standard Features

- Separate seat and back
- Wood components in Beech, in any of 9 standard stains or stain-to-match for no extra charge
- Wall-saving frame
- VELCRO® removable back covers
- Replaceable seats
- Threaded replaceable glides
- Use in connected layouts for no extra charge
- Ships assembled as 1, 2 or 3 seaters
- Ships 1/carton 20 cu ft

### Options

- Replaceable polyurethane arm cap (P) available in Black, Sterling Grey and Taupe (RAL 7006) add \$118 List
- Connected and freestanding tables
- Antibacterial and antimicrobial fabrics available
- Different fabric on seat and back for no extra charge
- CAL 133

Contact Spec Customer Service to railroad fabrics (specify repeat info and yardage requirement will be provided) and for repeats greater than 5" x 5"



### Bariatric Single Seater with arms

COM 3.0 yds

1.5 yd COM per single seat

1.5 yd COM per single back

MODEL	COM	GR 1	GR 2	GR 3	GR 4	GR 5	GR 6
<b>6701G</b>	<b>1490</b>	<b>1718</b>	<b>1792</b>	<b>1950</b>	<b>2172</b>	<b>2349</b>	<b>2580</b>

Dimensions (inches)

seat H	18.0	seat W	30.0	arm H	25.0
total H	33.75	total W	34.25	depth	26.25

Meets BIFMA Seating Durability Test to 750 lbs per chair  
CAL 133, add \$190 List per chair



**6701G**



Pricing May 2023  
Discount 57.7% from List prices

spec

MAS SIN 33721

## COOPER COLLECTION - MIDLAND Lounge Seating

Designed for today's healthcare facilities  
Highback Single Seater with arms – Ottoman

### Standard Features

- Separate seat and back
- Wood components in Beech, in any of 9 standard stains or stain-to-match for no extra charge
- Wall-saving frame
- Threaded replaceable glides
- Use in connected layouts for no extra charge
- Ships assembled as 1, 2 or 3 seaters
- Ships 1/carton 20 cu ft
- Ottoman ships 1/carton 5 cu ft

### Options

- Replaceable polyurethane arm cap (P) available in Black, Sterling Grey and Taupe (RAL 7006) add \$118 List
- Vinyl insert on top of the back, add \$53 List/seat back
- Connected and freestanding tables
- Antibacterial and antimicrobial fabrics available
- Different fabric on seat and back for no extra charge
- CAL 133

Contact Spec Customer Service to railroad fabrics  
(specify repeat info and yardage requirement will be provided) and for repeats greater than 5" x 5"



### Highback Single Seater with arms

COM 2.5 yds  
0.75 yd COM per single seat  
1.75 yds COM per single back

MODEL	COM	GR 1	GR 2	GR 3	GR 4	GR 5	GR 6
<b>6701H</b>	<b>1326</b>	<b>1521</b>	<b>1581</b>	<b>1712</b>	<b>1899</b>	<b>2044</b>	<b>2237</b>

#### Dimensions (inches)

seat H	18.0	seat W	21.0	arm H	25.0
total H	47.5	total W	25.25	depth	26.25

Meets BIFMA Seating Durability Test to 500 lbs per chair  
CAL 133, add \$171 List per chair



6701H

### Ottoman

COM 0.5 yd

MODEL	COM	GR 1	GR 2	GR 3	GR 4	GR 5	GR 6
<b>6730F</b>	<b>715</b>	<b>761</b>	<b>778</b>	<b>805</b>	<b>851</b>	<b>887</b>	<b>947</b>

#### Dimensions (inches)

H	11.5	W	19.25	depth	12.25
---	------	---	-------	-------	-------

CAL 133, add \$70 List per Ottoman



6730F



Pricing May 2023  
Discount 57.7% from List prices

spec™

MAS SIN 33721

## COOPER COLLECTION - MIDLAND Lounge Seating

Designed for today's healthcare facilities

Freestanding Lounge Tables – Corner and Spacer Connecting Tables

### Standard Features

- Tops in laminate or veneer
- Select laminate tops from 15 standard laminates or choose any standard Wilsonart, Nevamar, Formica, Arborite and Pionite matte finish laminates at no upcharge.
- Freestanding lounge tables available with PVC Flat (PVF), 2mm (2MM), exposed Baltic Birch plywood (PF, PKNR) or hardwood (HB) edge
- Connecting table tops available with PVC Flat (PVF) edge, Self edge (SE) or hardwood (HB) edge
- 9 standard veneer and hardwood edge stains. Stain-to-match available for no extra charge.
- Beech legs and Beech table skirts stained the same
- Tops utilize NU Green earth friendly core
- Threaded replaceable glides
- 18" height

### Options

- Non-standard laminates, contact Spec for pricing
- Custom size spacer tables for restricted spaces
- Self edge available at same cost as PVC Flat (PVF) edge
- Other sizes may be available

*Radius Corner Tables are recommended for open areas*

### Freestanding Lounge Tables

Model	Laminate PVF/SE/2MM	Laminate PF/PKNR/HB	Veneer HB	Cu.Ft.
67 - 24 x 24 SQ	<b>1142</b>	<b>1389</b>	<b>1584</b>	7.2
67 - 24 x 48 RE	<b>1346</b>	<b>1619</b>	<b>1893</b>	18
67 - 30 x 30 SQ	<b>1278</b>	<b>1456</b>	<b>1666</b>	13.5
67 - 22 DIA	<b>1338</b>	<b>1793</b>	<b>2051</b>	7.2



### Corner and Spacer Connecting Tables

Model	Laminate PVF/SE	Laminate HB Edge	Veneer HB Edge	Cu.Ft.
67RC - 28 x 28 <i>Radius Corner Table</i>	<b>1054</b>	<b>1414</b>	<b>1658</b>	2
67SC - 28 x 28 <i>Square Corner Table</i>	<b>1151</b>	<b>1399</b>	<b>1543</b>	2
67TC - 45 degree <i>Corner Table</i>	<b>1054</b>	<b>1414</b>	<b>1658</b>	2
67ST - 21 x 24 <i>Spacer Table</i>	<b>715</b>	<b>1010</b>	<b>1157</b>	2
67ET - 21 x 24 <i>End Table</i>	<b>956</b>	<b>1250</b>	<b>1398</b>	2

