



Pricing May 2023
Discount 57.7% from List prices

spec

MAS SIN 33721

COOPER COLLECTION - ROCKS Lounge Seating



PRODUCT CODE

6 7 01 HR

Collection
6 : Cooper

Series
4 : Huntsville
7 : Midland

Number of Seats
01 : Single Seater

Chair Type
MR : Mid Back
HR : Highback



OPTIONS

BACK OPTIONS



Highback



Mid Back

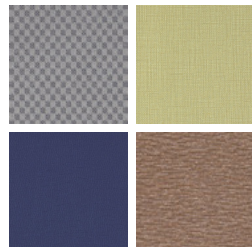
FINISHES

FRAME



Select from one of our 9 standard wood stains or stain-to-match for no extra charge

FABRIC



Select fabrics from one of our textile partners

ARM OPTIONS

Arm options will vary depending on the Series. Please refer to the price list for more information on the Series you would like to specify.

See Spectone Card or specfurniture.com/tools-and-resources/product-resources/finishes for a complete list of finish options and colors.



Pricing May 2023
Discount 57.7% from List prices

spec™

MAS SIN 33721

COOPER COLLECTION - ROCKS Lounge Seating

Designed for today's healthcare facilities
Huntsville Medium and Highback with arms

Standard Features

- Separate seat and back
- Built in headrest on highback
- Total range of motion is 2" down and 6" back
- Wood arms
- Wood components in Beech, in any of 9 standard stains or stain-to-match for no extra charge
- Wall-saving frame
- VELCRO® removable back covers
- Replaceable seats
- Threaded replaceable glides
- Ships assembled
- Ships 1/carton 15 cu ft (medium back), 1/carton 19 cu ft (highback)

Options

- Rounded polyurethane arms (-P), field-replaceable, add \$162 List
- Matching ottoman
- Removable headrest
- No headrest
- Antibacterial and antimicrobial fabrics available
- Different fabric on seat and back for no extra charge
- CAL 133

Contact Spec Customer Service to railroad fabrics (specify repeat info and yardage requirement will be provided) and for repeats greater than 5" x 5"



Huntsville Medium back with arms

COM 1.75 yds

0.75 yd COM per single seat

1.0 yd COM per single back

MODEL	COM	GR 1	GR 2	GR 3	GR 4	GR 5	GR 6
6401MR	2017	2134	2169	2246	2363	2449	2564

Dimensions (inches)

seat H	18.0	seat W	21.0	arm H	25.0
total H	33.75	total W	25.25	depth	27.5

Meets BIFMA Seating Durability Test to 350 lbs per seat
CAL 133, add \$156 List per seat



6401MR

Huntsville Highback with arms

COM 2.5 yds

0.75 yd COM per single seat

1.75 yd COM per single back

MODEL	COM	GR 1	GR 2	GR 3	GR 4	GR 5	GR 6
6401HR	2327	2509	2568	2688	2866	3002	3234

Dimensions (inches)

seat H	18.0	seat W	21.0	arm H	25.0
total H	47.5	total W	25.5	depth	27.5

Meets BIFMA Seating Durability Test to 350 lbs per seat
CAL 133, add \$171 List per seat



6401HR



Pricing May 2023
Discount 57.7% from List prices

spec™

MAS SIN 33721

COOPER COLLECTION - ROCKS Lounge Seating

Designed for today's healthcare facilities

Midland Medium and Highback with arms

Standard Features

- Separate seat and back
- Built in headrest on highback
- Total range of motion is 2" down and 6" back
- Wood arms
- Wood components in Beech, in any of 9 standard stains or stain-to-match for no extra charge
- Wall-saving frame
- VELCRO® removable back covers
- Replaceable seats
- Threaded replaceable glides
- Ships assembled
- Ships 1/carton 15 cu ft (medium back), 1/carton 19 cu ft (highback)

Options

- Replaceable polyurethane arm caps, add \$118 List
- Matching ottoman
- Removable headrest
- No headrest
- Antibacterial and antimicrobial fabrics available
- Different fabric on seat and back for no extra charge
- CAL 133

Contact Spec Customer Service to railroad fabrics (specify repeat info and yardage requirement will be provided) and for repeats greater than 5" x 5"



Midland Medium back with arms

COM 1.75 yds

0.75 yd COM per single seat

1.0 yd COM per single back

MODEL	COM	GR 1	GR 2	GR 3	GR 4	GR 5	GR 6
6701MR	1777	1891	1928	2007	2117	2208	2321

Dimensions (inches)

seat H	18.0	seat W	21.0	arm H	25.0
total H	33.75	total W	25.5	depth	27.5

Meets BIFMA Seating Durability Test to 350 lbs per seat

CAL 133, add \$156 List per seat



6701MR

Midland Highback with arms

COM 2.5 yds

0.75 yd COM per single seat

1.75 yd COM per single back

MODEL	COM	GR 1	GR 2	GR 3	GR 4	GR 5	GR 6
6701HR	2162	2352	2415	2543	2735	2880	3074

Dimensions (inches)

seat H	18.0	seat W	21.0	arm H	25.0
total H	47.5	total W	25.5	depth	27.5

Meets BIFMA Seating Durability Test to 350 lbs per seat

CAL 133, add \$171 List per seat



6701HR