



Pricing September 2022
Discount 57.7% from List prices



MAS SIN 33721

DIGNITY Behavioral Health Series



PRODUCT CODE

4501M - UU

Series

45 : Dignity

Center Arm

0 : Outside Arms

Number of Seats

1 : Single Seater
2 : Two Seater
3 : Three Seater

Chair Type

M : Mid Back
G : Bariatric

Arm Panel Finish

LL : Laminate Outside and Inside
LU : Laminate Outside/Upholstered Inside
UL : Upholstered Outside/Laminated Inside
UU : Upholstered Outside and Inside

OPTIONS

SEAT PAN



FINISHES

FRAME / ARMS



Black

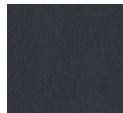


Sterling Grey



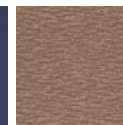
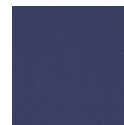
Taupe

LAMINATE



Select from 15 standard laminates or choose any standard Wilsonart, Nevamar, Formica, Arborite and Pionite matte finish laminates for no extra charge

FABRIC



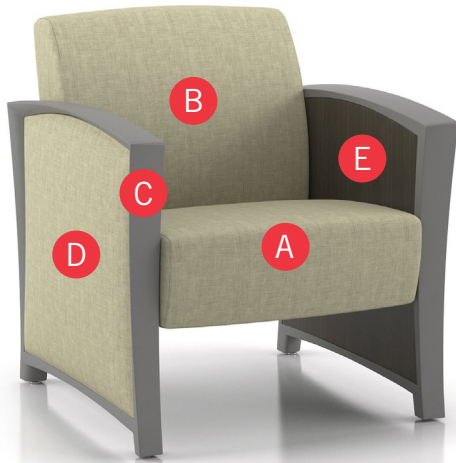
Select fabrics from one of our textile partners

See Spectone Card or specfurniture.com/materials/finishes for a complete list of finish options and colors.



DIGNITY Behavioral Health Series

HOW TO ORDER



Specify Model

- A** Specify Fabric - Seat¹
Manufacturer, Pattern Name, Color
- B** Specify Fabric - Back¹
Manufacturer, Pattern Name, Color
- C** Specify Frame Finish
- D** Specify Outside/Inside Panel Finish
- E** *For Laminate Panels: Manufacturer, Laminate Name, Laminate Code*
For Fabric Panels: Manufacturer, Pattern Name, Color

Optional: Additional Weight, Nylon Caps, Floor Mounting Straps, Elimination of Separated Seat and Back, CAL 133, Moisture Barrier, Connecting and Freestanding Tables, Dolly

¹ When multiple fabrics are specified on two and three seat chairs, please provide a drawing and legend for fabric placement.



Model	Fabric - Seat	Fabric - Back	Frame Finish	Outside Panel	Inside Panel
4501M-UL	Momentum, Beeline, Eucalyptus	Momentum, Beeline, Eucalyptus	Sterling Grey	Momentum, Beeline, Eucalyptus	Wilsonart, Asian Night, 7949K-18



DIGNITY Behavioral Health Series

Standard Features

- Separate seat and back
- Self-skinned polyurethane perimeter arms
- Upholstered side panels can match or contrast seat/back
- Laminate or upholstered side panels on inside and outside of arm
- Select from 15 standard laminates or choose any standard Wilsonart, Nevamar, Formica, Arborite and Pionite matte finish laminates for no extra charge.
- No protruding legs or hardware
- Tamper proof fastenings
- Non-removable steel leveling glides
- Ships assembled
- Ships 1/carton 15 cu ft

Contact Spec Customer Service to railroad fabrics (specify repeat info and yardage requirement will be provided) and for repeats greater than 5" x 5"

Options

- Specify frame finish, Black (B), Sterling Grey (G) or Taupe RAL 7006 (T)
- Add up to 20 lbs of additional weight per seat, add \$178 List per seat
- Four white nylon caps can be added to prevent rust in areas with frequent cleaning/mopping. Add \$ 20 List
- Non-standard laminates, contact Spec for pricing
- Antibacterial and antimicrobial fabrics available
- Floor mounting straps available, call Customer Service
- Connecting and freestanding tables
- CAL 133
- Elimination of separated seat and back available with either solid or perforated seat pan, call Customer Service



Single Seater with arms

COM 1.85 yds

0.75 yd COM per single seat / 1.10 yd COM per single back

MODEL	COM	GR 1	GR 2	GR 3	GR 4	GR 5	GR 6
4501M-LL	1814	1929	1966	2040	2152	2238	2350

Arm panel – laminated, outside and inside

CAL 133, add \$140 List per chair



4501M
107 lbs

COM 2.85 yds

0.75 yd COM per single seat / 1.10 yd COM per single back / .5 yd COM per panel

MODEL	COM	GR 1	GR 2	GR 3	GR 4	GR 5	GR 6
4501M-LU	1958	2137	2195	2313	2490	2620	2798

Arm panel – laminated, outside, upholstered inside

CAL 133, add \$240 List per chair

COM 2.85 yds

0.75 yd COM per single seat / 1.10 yd COM per single back / .5 yd COM per panel

MODEL	COM	GR 1	GR 2	GR 3	GR 4	GR 5	GR 6
4501M-UL	1958	2137	2195	2313	2490	2620	2798

Arm panel – upholstered outside, laminated inside

CAL 133, add \$240 List per chair

COM 3.85 yds

0.75 yd COM per single seat / 1.10 yd COM per single back / 1.0 yd COM per panel

MODEL	COM	GR 1	GR 2	GR 3	GR 4	GR 5	GR 6
4501M-UU	2101	2343	2422	2584	2823	3006	3245

Arm panel – upholstered, outside and inside

CAL 133, add \$334 List per chair

Dimensions (inches)

seat H	18.0	seat W	23.0	arm H	25.25
total H	32.75	total W	29.0	depth	29.75

Meets BIFMA Seating Durability Test to 500 lbs per chair



DIGNITY Behavioral Health Series

Standard Features

- Separate seat and back
- Self-skinned polyurethane perimeter arms
- Upholstered side panels can match or contrast seat/back
- Laminate or upholstered side panels on inside and outside of arm
- Select from 15 standard laminates or choose any standard Wilsonart, Nevamar, Formica, Arborite and Pionite matte finish laminates for no extra charge.
- No protruding legs or hardware
- Tamper proof fastenings
- Non-removable steel leveling glides
- Ships assembled
- Ships 1/carton 26 cu ft

Contact Spec Customer Service to railroad fabrics (specify repeat info and yardage requirement will be provided) and for repeats greater than 5" x 5"

Options

- Specify frame finish, Black (B), Sterling Grey (G) or Taupe RAL 7006 (T)
- Add up to 20 lbs of additional weight per seat, add \$178 List per seat
- Four white nylon caps can be added to prevent rust in areas with frequent cleaning/mopping. Add \$ 20 List
- Non-standard laminates, contact Spec for pricing
- Antibacterial and antimicrobial fabrics available
- Floor mounting straps available, call Customer Service
- Connecting and freestanding tables
- CAL 133
- Elimination of separated seat and back available with either solid or perforated seat pan, call Customer Service



Two Seater with outside arms

COM 3.70 yds

0.75 yd COM per single seat / 1.10 yd COM per single back

MODEL	COM	GR 1	GR 2	GR 3	GR 4	GR 5	GR 6
4502M-LL	2667	2890	2966	3115	3340	3509	3735

Arm panel – laminated, outside and inside

CAL 133, add \$280 List per two seater

COM 4.70 yds

0.75 yd COM per single seat / 1.10 yd COM per single back / .5 yd COM per panel

MODEL	COM	GR 1	GR 2	GR 3	GR 4	GR 5	GR 6
4502M-LU	2809	3099	3197	3386	3677	3896	4183

Arm panel – laminated, outside, upholstered inside

CAL 133, add \$380 List per two seater

COM 4.70 yds

0.75 yd COM per single seat / 1.10 yd COM per single back / .5 yd COM per panel

MODEL	COM	GR 1	GR 2	GR 3	GR 4	GR 5	GR 6
4502M-UL	2809	3099	3197	3386	3677	3896	4183

Arm panel – upholstered outside, laminated inside

CAL 133, add \$380 List per two seater

COM 5.70 yds

0.75 yd COM per single seat / 1.10 yd COM per single back / 1.0 yd COM per panel

MODEL	COM	GR 1	GR 2	GR 3	GR 4	GR 5	GR 6
4502M-UU	2951	3306	3423	3658	4010	4277	4635

Arm panel – upholstered, outside and inside

CAL 133, add \$480 List per two seater

Dimensions (inches)

seat H	18.0	seat W	46.0	arm H	25.25
total H	32.75	total W	52.0	depth	29.75

Meets BIFMA Seating Durability Test to 750 lbs per two seater



4502M
152 lbs



DIGNITY Behavioral Health Series

Standard Features

- Separate seat and back
- Self-skinned polyurethane perimeter arms
- Upholstered side panels can match or contrast seat/back
- Laminate or upholstered side panels on inside and outside of arm
- Select from 15 standard laminates or choose any standard Wilsonart, Nevamar, Formica, Arborite and Pionite matte finish laminates for no extra charge.
- No protruding legs or hardware
- Tamper proof fastenings
- Non-removable steel leveling glides
- Ships assembled
- Ships 1/carton 39 cu ft

Contact Spec Customer Service to railroad fabrics (specify repeat info and yardage requirement will be provided) and for repeats greater than 5" x 5"

Options

- Specify frame finish, Black (B), Sterling Grey (G) or Taupe RAL 7006 (T)
- Add up to 20 lbs of additional weight per seat, add \$178 List per seat
- Four white nylon caps can be added to prevent rust in areas with frequent cleaning/mopping. Add \$ 20 List
- Non-standard laminates, contact Spec for pricing
- Antibacterial and antimicrobial fabrics available
- Floor mounting straps available, call Customer Service
- Connecting and freestanding tables
- CAL 133
- Elimination of separated seat and back available with either solid or perforated seat pan, call Customer Service



Three Seater with outside arms

COM 5.55 yds

0.75 yd COM per single seat / 1.10 yd COM per single back

MODEL	COM	GR 1	GR 2	GR 3	GR 4	GR 5	GR 6
4503M-LL	3515	3855	3968	4191	4530	4782	5121

Arm panel – laminated, outside and inside

CAL 133, add \$420 List per three seater

COM 6.55 yds

0.75 yd COM per single seat / 1.10 yd COM per single back / .5 yd COM per panel

MODEL	COM	GR 1	GR 2	GR 3	GR 4	GR 5	GR 6
4503M-LU	3657	4062	4195	4465	4865	5166	5571

Arm panel – laminated, outside, upholstered inside

CAL 133, add \$520 List per three seater

COM 6.55 yds

0.75 yd COM per single seat / 1.10 yd COM per single back / .5 yd COM per panel

MODEL	COM	GR 1	GR 2	GR 3	GR 4	GR 5	GR 6
4503M-UL	3657	4062	4195	4465	4865	5166	5571

Arm panel – upholstered outside, laminated inside

CAL 133, add \$520 List per three seater

COM 7.55 yds

0.75 yd COM per single seat / 1.10 yd COM per single back / 1.0 yd COM per panel

MODEL	COM	GR 1	GR 2	GR 3	GR 4	GR 5	GR 6
4503M-UU	3801	4270	4425	4736	5198	5550	6020

Arm panel – upholstered, outside and inside

CAL 133, add \$620 List per three seater

Dimensions (inches)

seat H	18.0	seat W	69.0	arm H	25.25
total H	32.75	total W	75.0	depth	29.75

Meets BIFMA Seating Durability Test to 1000 lbs per three seater



4503M
197 lbs



DIGNITY Behavioral Health Series

Standard Features

- Separate seat and back
- Self-skinned polyurethane perimeter arms
- Upholstered side panels can match or contrast seat/back
- Laminate or upholstered side panels on inside and outside of arm
- Select from 15 standard laminates or choose any standard Wilsonart, Nevamar, Formica, Arborite and Pionite matte finish laminates for no extra charge.
- No protruding legs or hardware
- Tamper proof fastenings
- Non-removable steel leveling glides
- Ships assembled
- Ships 1/carton 20 cu ft

Contact Spec Customer Service to railroad fabrics (specify repeat info and yardage requirement will be provided) and for repeats greater than 5" x 5"

Options

- Specify frame finish, Black (B), Sterling Grey (G) or Taupe RAL 7006 (T)
- Add up to 20 lbs of additional weight per seat, add \$178 List per seat
- Four white nylon caps can be added to prevent rust in areas with frequent cleaning/mopping. Add \$ 20 List
- Non-standard laminates, contact Spec for pricing
- Antibacterial and antimicrobial fabrics available
- Floor mounting straps available, call Customer Service
- Connecting and freestanding tables
- CAL 133
- Elimination of separated seat and back available with either solid or perforated seat pan, call Customer Service



Bariatric Single Seater with arms

COM 3.25 yds

1.5 yd COM per single seat / 1.75 yd COM per single back

MODEL	COM	GR 1	GR 2	GR 3	GR 4	GR 5	GR 6
4501G-LL	2347	2560	2625	2765	2974	3133	3343

Arm panel – laminated, outside and inside

CAL 133, add \$181 List per chair



4501G
116 lbs

COM 4.25 yds

1.5 yd COM per single seat / 1.75 yd COM per single back / .5 yd COM per panel

MODEL	COM	GR 1	GR 2	GR 3	GR 4	GR 5	GR 6
4501G-LU	2492	2765	2854	3037	3308	3514	3788

Arm panel – laminated, outside, upholstered inside

CAL 133, add \$275 List per chair

COM 4.25 yds

1.5 yd COM per single seat / 1.75 yd COM per single back / .5 yd COM per panel

MODEL	COM	GR 1	GR 2	GR 3	GR 4	GR 5	GR 6
4501G-UL	2492	2765	2854	3037	3308	3514	3788

Arm panel – upholstered outside, laminated inside

CAL 133, add \$275 List per chair

COM 5.25 yds

1.5 yd COM per single seat / 1.75 yd COM per single back / 1.0 yd COM per panel

MODEL	COM	GR 1	GR 2	GR 3	GR 4	GR 5	GR 6
4501G-UU	2634	2973	3083	3308	3646	3901	4242

Arm panel – upholstered, outside and inside

CAL 133, add \$369 List per chair

Dimensions (inches)

seat H	18.0	seat W	30.25	arm H	25.25
total H	32.75	total W	36.25	depth	29.75

Meets BIFMA Seating Durability Test to 750 lbs per chair

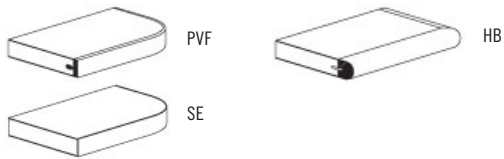


DIGNITY Behavioral Health Series

Standard Features

- Tops in laminate or veneer
- Select from 15 standard laminates or choose any standard Wilsonart, Nevamar, Formica, Arborite and Pionite matte finish laminates for no extra charge.
- Laminate tops with PVC Flat (PVF), Self Edge (SE), or hardwood (HB) edge
- 9 standard veneer and hardwood edge stains. Stain-to-match available for no extra charge.
- Tops utilize NU Green earth friendly core
- 18" height
- Non-removable steel leveling glides

Radius Corner Tables are recommended for open areas



Options

- Specify frame finish, Black (B), Sterling Grey (G) or Taupe RAL 7006 (T)
- Additional weight can be added, contact factory
- Non-standard laminates, contact Spec for pricing
- Floor mounting straps available, call Customer Service

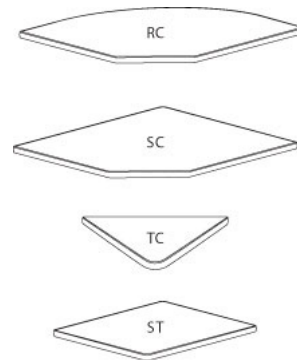
Freestanding Lounge Tables

Model	Laminate PVF/SE Edge	Laminate HB Edge	Veneer HB Edge	Weight	Cu.Ft.
DIGN - 24 x 24 SQ	1432	1663	1706	57	7.2
DIGN - 30 x 30 SQ	1615	1781	1840	74	13.5
DIGN - 36 x 36 SQ	1764	2024	2096	94	18
DIGN - 42 x 42 SQ	2143	2521	2636	116	24.5
DIGN - 48 x 48 SQ	2373	2705	2829	141	32
DIGN - 24 DIA	1398	1819	1863	45	7.2
DIGN - 30 DIA	1576	1988	2047	57	13.5
DIGN - 36 DIA	1740	2344	2446	71	18
DIGN - 42 DIA	2129	2802	2945	87	24.5
DIGN - 48 DIA	2202	3110	3268	104	32



Corner and Spacer Connecting Tables

Model	Laminate PVF/SE	Laminate HB Edge	Veneer HB Edge	Weight	Cu.Ft.
DIGNRC - 28 x 28 <i>Radius Corner Table</i>	826	1036	1280	31	2
DIGNSC - 28 x 28 <i>Square Corner Table</i>	826	1036	1280	32	2
DIGNTC - 45 degree <i>Corner Table</i>	826	1036	1280	26	2
DIGNST - 21 x 24 <i>Spacer Table</i>	636	866	1044	27	2





Pricing September 2022
Discount 57.7% from List prices



MAS SIN 33721

DIGNITY Behavioral Health Series

Standard Features

- Black finish only
- 6" soft wheel casters
- Standard Dolly holds 1 single seat chair
- Ships 1/carton, 17 cu. ft.
- Ships assembled



Dignity - Dolly

Description	Model	Price	Weight
Single Seat Dolly	DIGN-99	653	12lb

Dimensions (inches)

height	39.0
width	23.0
depth	30.0

