



Pricing May 2023  
Discount 57.7% from List prices

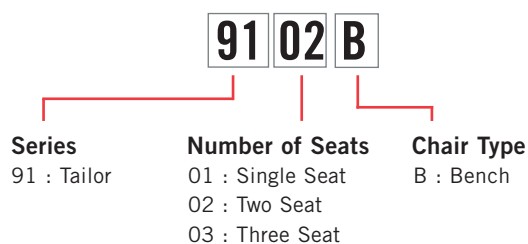
spec™

MAS SIN 33721

## TAILOR Lounge Collection - BENCH



### PRODUCT CODE



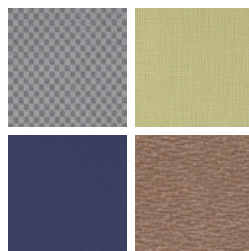
### FINISHES

#### FRAME



Select from one of our 76 standard Spectone colors

#### FABRIC



Select fabrics from one of our textile partners

#### POWER



In seat

See Spectone Card or [specfurniture.com/tools-and-resources/product-resources/finishes](https://specfurniture.com/tools-and-resources/product-resources/finishes) for a complete list of finish options and colors.

### HOW TO ORDER

#### Specify Model

- A** Specify Fabric - Seat<sup>1</sup>  
*Manufacturer, Pattern Name, Color*
- B** Specify Frame Finish

Optional: CAL 133, Moisture Barrier, Tablet Arm, Sled Base, Connecting and Freestanding Tables, Power

<sup>1</sup> When multiple fabrics are specified on two and three seat chairs, please provide a drawing and legend for fabric placement.



Model	Fabric - Seat 1	Fabric - Seat 2	Fabric - Seat 3	Frame Finish
9103B	Momentum, Beeline, Canvas	Momentum, Beeline, Canvas	Momentum, Beeline, Canvas	Silver



Pricing May 2023  
Discount 57.7% from List prices

spec™

MAS SIN 33721

## TAILOR Lounge Collection - BENCH

### Standard Features

- One piece seat upholstery for easier maintenance
- Non wall-saving frame
- Clear, non-marring glides
- Meets seating durability test to 500 lbs per single seat bench, and to 570 lbs per two seat bench
- Ships assembled
- Ships 1 single seat bench per carton, 11 cu ft
- Ships 1 two seat bench per carton, 20 cu ft

*For fabrics you wish railroaded or repeats larger than 5" x 5", please contact the factory with repeat information, and yardage requirement will be provided.*



Non Wall-saving Frame



Power (Optional)

### Options

- Upholstered seats can match or contrast
- One connecting plate per unit to connect to other Tailor products, add **\$52** List per plate
- Swivel tablet arm (TA), add **\$650** List each. Cannot be installed between seats. Choose 12"x12" Square (SQ) or 16-1/2"x 11-1/2" Oval (OVAL). Height above floor is 27-1/2"
- Sled base (non wall-saving), add **\$120** List
- Cove Mini power module centered in the seat front is available in Black, Silver and White. Add **\$508** List per seat per module
- Antibacterial and antimicrobial fabrics available
- Freestanding tables available
- CAL 133 for 9101B, add **\$133** List per unit. CAL 133 for 9102B, add **\$265** List per unit

### Single Seat Bench

COM 1.25 yds

MODEL	COM	GR 1	GR 2	GR 3	GR 4	GR 5	GR 6
<b>9101B</b>	<b>878</b>	<b>963</b>	<b>994</b>	<b>1054</b>	<b>1143</b>	<b>1212</b>	<b>1302</b>

Dimensions (inches)

seat H	18.0	seat W	23.0				
total H	18.0	total W	23.0	depth	20.0		



**9101B**  
26 lbs

### Two Seat Bench

COM 2.5 yds

1.25 yds COM per single seat

MODEL	COM	GR 1	GR 2	GR 3	GR 4	GR 5	GR 6
<b>9102B</b>	<b>1238</b>	<b>1412</b>	<b>1468</b>	<b>1589</b>	<b>1767</b>	<b>1905</b>	<b>2085</b>

Dimensions (inches)

seat H	18.0	seat W	23.0				
total H	18.0	total W	46.0	depth	20.0		



**9102B**  
57 lbs



Pricing May 2023  
Discount 57.7% from List prices

spec™

MAS SIN 33721

## TAILOR Lounge Collection - BENCH

### Standard Features

- One piece seat upholstery for easier maintenance
- Non wall-saving frame
- Clear, non-marring glides
- Meets BIFMA Seating Durability Test to 750 lbs
- Ships assembled
- Ships 1 three seat bench per carton, 29 cu ft

*For fabrics you wish railroaded or repeats larger than 5" x 5", please contact the factory with repeat information, and yardage requirement will be provided.*



Non Wall-saving Frame



Power (Optional)

### Options

- Upholstered seats can match or contrast
- One connecting plate per unit to connect to other Tailor products, add **\$52** List per plate
- Swivel tablet arm (TA), add **\$650** List each. Cannot be installed between seats. Choose 12"x12" Square (SQ) or 16-1/2"x 11-1/2" Oval (OVAL). Height above floor is 27-1/2"
- Sled base (non wall-saving), add **\$120** List
- Cove Mini power module centered in the seat front is available in Black, Silver and White. Add **\$508** List per seat per module
- Antibacterial and antimicrobial fabrics available
- Freestanding tables available
- CAL 133, add **\$398** List per unit

### Three Seat Bench

COM 3.75 yds  
1.25 yds COM per single seat

MODEL	COM	GR 1	GR 2	GR 3	GR 4	GR 5	GR 6
<b>9103B</b>	<b>1610</b>	<b>1873</b>	<b>1956</b>	<b>2141</b>	<b>2406</b>	<b>2613</b>	<b>2886</b>

Dimensions (inches)

seat H	18.0	seat W	23.0				
total H	18.0	total W	69.0	depth	20.0		



**9103B**  
100 lbs