



Pricing May 2023
Discount 57.7% from List prices

spec™

MAS SIN 33721

TAILOR Lounge Collection - BOOTH



PRODUCT CODE

91 03 HB

Series

91 : Tailor

Number of Seats

1 : One Seat

2 : Two Seats

3 : Three Seats

Type

MB : Midback

HB : Highback

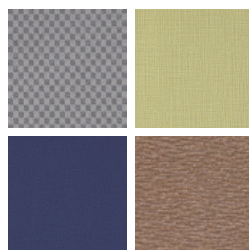
FINISHES

FRAME



Select from one of our 76 standard Spectone colors

FABRIC



Select fabrics from one of our textile partners

POWER



In seat

TABLET ARM



See Spectone Card or specfurniture.com/tools-and-resources/product-resources/finishes for a complete list of finish options and colors.

HOW TO ORDER

Specify Model

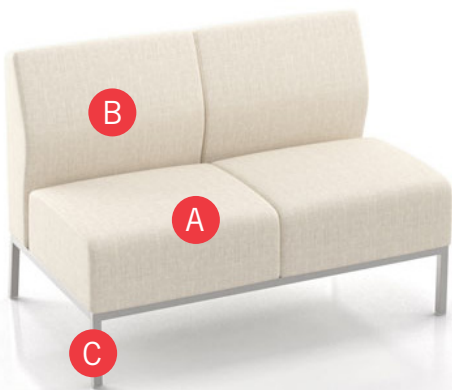
A Specify Fabric - Seat¹
Manufacturer, Pattern Name, Color

B Specify Fabric - Back¹
Manufacturer, Pattern Name, Color

C Specify Frame Finish

Optional: CAL 133, Moisture Barrier, Tablet Arm, Sled Base, Freestanding Tables, Leveling Glides, Power

¹ When multiple fabrics are specified, please provide a drawing and legend for fabric placement.



Model	Fabric - Seat	Fabric - Back 1	Fabric - Back 2	Frame Finish
9102MB	Momentum, Beeline, Canvas	Momentum, Beeline, Canvas	Momentum, Beeline, Canvas	Silver

Toll Free: 1-888-761-7732



Pricing May 2023
Discount 57.7% from List prices

spec™

MAS SIN 33721

TAILOR Lounge Collection - BOOTH

MIDBACK

Standard Features

- Separate seat and back
- Single piece seat upholstery for easier maintenance
- Non wall-saving frame
- Clear, non-marring glides
- 9102MB meets BIFMA Seating Durability Test to 570 lbs. 9103MB meets BIFMA Seating Durability Test to 750 lbs
- Ships assembled
- Ships 1 two seat sofa per carton, 43 cu ft
- Ships 1 three seat sofa per carton, 62 cu ft

For fabrics you wish railroaded or repeats larger than 5" x 5", please contact the factory with repeat information, and yardage requirement will be provided.

To ensure proper configuration please provide a layout drawing.



Non Wall-saving
Frame



Power (Optional)

Options

- For an individually sewn seat upholstery that creates a gap between seats, call Customer Service
- Leveling glides with inserts (set of 4) are available, add **\$28** List
- Swivel tablet arm (TA), add **\$650** List each. Cannot be installed between seats. Choose 12"x12" Square (SQ) or 16-1/2"x 11-1/2" Oval (OVAL). Height above floor is 27-1/2"
- Sled base (non wall-saving), add **\$120**List
- Upholstered seat/back can match or contrast
- Cove Mini power module centered in the seat front is available in Black, Silver and White. Add **\$508** List per seat per module
- Antibacterial and antimicrobial fabrics available
- Connecting and freestanding tables available
- CAL 133 for 9102MB, add **\$530** List per unit. CAL 133 for 9103MB, add **\$795**List per unit

Two Seat, Midback Booth

COM 5.5 yds

2.5 yds COM per two seater one-piece seat

3.0 yds COM per two seater two-piece back (1.5 yds COM per single back)

MODEL	COM	GR 1	GR 2	GR 3	GR 4	GR 5	GR 6
9102MB	2102	2435	2542	2776	3118	3380	3726

Dimensions (inches)

seat H	18.0	seat W	23.0				
total H	33.0	total W	46.0	depth	27.50		



9102MB
92 lbs

Three Seat, Midback Booth

COM 8.25 yds

3.75 yds COM per three seater one-piece seat

4.5 yds COM per three seater three-piece back (1.5 yds COM per single back)

MODEL	COM	GR 1	GR 2	GR 3	GR 4	GR 5	GR 6
9103MB	3042	3523	3675	4010	4495	4873	5370

Dimensions (inches)

seat H	18.0	seat W	23.0				
total H	33.0	total W	69.0	depth	27.50		



9103MB
137 lbs



Pricing May 2023
Discount 57.7% from List prices

spec™

MAS SIN 33721

TAILOR Lounge Collection - BOOTH

HIGHBACK

Standard Features

- Separate seat and back
- Meets seating durability test to 500 lbs per single seat highback booth, and to 570 lbs per two seat highback booth
- Single piece seat upholstery for easier maintenance
- Non wall-saving frame
- Clear, non-marring glides
- Ships assembled
- Ships 1 single seat sofa per carton, 25 cu ft
- Ships 1 two seat sofa per carton, 55 cu ft

For fabrics you wish railroaded or repeats larger than 5" x 5", please contact the factory with repeat information, and yardage requirement will be provided.

To ensure proper configuration please provide a layout drawing.



Non Wall-saving
Frame



Power (Optional)

Options

- For an individually sewn seat upholstery that creates a gap between seats, call Customer Service
- Leveling glides with inserts (set of 4) are available, add **\$28** List
- Swivel tablet arm (TA), add **\$650** List each. Cannot be installed between seats. Choose 12"x12" Square (SQ) or 16-1/2"x 11-1/2" Oval (OVAL). Height above floor is 27-1/2"
- Sled base (non wall-saving), add **\$120** List
- Upholstered seat/back can match or contrast
- Cove Mini power module centered in the seat front is available in Black, Silver and White. Add **\$508** List per seat per module
- Antibacterial and antimicrobial fabrics available
- Connecting and freestanding tables available
- CAL 133 for 9101HB, add **\$345** List per unit. CAL 133 for 9102HB, add **\$689** List per unit

Single Seat, Highback Booth

COM 3.75 yds

1.5 yds COM per single seater seat

2.25 yds COM per single seater back

MODEL	COM	GR 1	GR 2	GR 3	GR 4	GR 5	GR 6
9101HB	1313	1567	1654	1829	2094	2299	2562

Dimensions (inches)

seat H	18.0	seat W	23.0				
total H	44.0	total W	23.0	depth	27.50		



9101HB
54 lbs

Two Seat, Highback Booth

COM 7.0 yds

2.5 yds COM per two seater one-piece seat

4.5 yds COM per two seater two-piece back (2.25 yds COM per single back)

MODEL	COM	GR 1	GR 2	GR 3	GR 4	GR 5	GR 6
9102HB	2401	2870	3023	3350	3830	4201	4688

Dimensions (inches)

seat H	18.0	seat W	23.0				
total H	44.0	total W	46.0	depth	27.50		



9102HB
98 lbs



Pricing May 2023
Discount 57.7% from List prices

spec™

MAS SIN 33721

TAILOR Lounge Collection - BOOTH

HIGHBACK

Standard Features

- Separate seat and back
- Meets seating durability test to 750 lbs per three seat highback booth
- Single piece seat upholstery for easier maintenance
- Non wall-saving frame
- Clear, non-marring glides
- Ships assembled
- Ships 1 three seat sofa per carton, 79 cu ft

For fabrics you wish railroaded or repeats larger than 5" x 5", please contact the factory with repeat information, and yardage requirement will be provided.

To ensure proper configuration please provide a layout drawing.



Non Wall-saving
Frame



Power (Optional)

Options

- For an individually sewn seat upholstery that creates a gap between seats, call Customer Service
- Leveling glides with inserts (set of 4) are available, add \$28 List
- Swivel tablet arm (TA), add \$650 List each. Cannot be installed between seats. Choose 12"x12" Square (SQ) or 16-1/2"x 11-1/2" Oval (OVAL). Height above floor is 27-1/2"
- Sled base (non wall-saving), add \$120 List
- Upholstered seat/back can match or contrast
- Cove Mini power module centered in the seat front is available in Black, Silver and White. Add \$508 List per seat per module
- Antibacterial and antimicrobial fabrics available
- Connecting and freestanding tables available
- CAL 133 for 9103HB, add \$1051 List per unit

Three Seat, Highback Booth

COM 10.5 yds

3.75 yds COM per three seater one-piece seat

6.75 yds COM per three seater three-piece back (2.25 yds COM per single back)

MODEL	COM	GR 1	GR 2	GR 3	GR 4	GR 5	GR 6
9103HB	3489	4173	4392	4871	5566	6103	6814

Dimensions (inches)

seat H	18.0	seat W	23.0				
total H	44.0	total W	69.0	depth	27.50		



9103HB
161 lbs



Pricing May 2023
Discount 57.7% from List prices

spec™

MAS SIN 33721

TAILOR Lounge Collection - BOOTH

TABLES



MODEL	BASES			TOP SPECIFICATIONS	OPTIONS	LBS
	<i>Code</i>	<i>Size</i>	<i>Qty.</i>	<i>For Laminate Top</i> SE 2MM		
<i>Rectangle</i> <i>29" high</i>						
30 X 46 RE	TBT	20 X 36	1	1698		123
36 X 46 RE	TBT	26 X 36	1	2041		153
42 X 46 RE	TBT	32 X 36	1	2576		183
30 X 69 RE	TBT	20 X 27	2	2928		185
36 X 69 RE	TBT	26 X 27	2	3280		230
42 X 69 RE	TBT	32 X 27	2	3925		276



30X46RE TBT

30X69RE TBT

STANDARD FEATURES

- Select from 15 standard laminates or choose any standard Wilsonart, Nevamar, Formica, Arborite and Pionite matte finish laminates for no extra charge. For other laminate please contact the factory for pricing.
- Standard with leveling glides.
- Bases available in any Spectone color.
- Standard 29" table height.
- Ships Knocked Down.

HOW TO ORDER

1. Select Model
2. Select Base
3. Select Edge Style
4. Select Options
5. Select Top Finish
6. Select Edge Finish
7. Select Base Finish

Example: 3046RE - TBT - 2MM

MODEL BASE EDGE