



Pricing May 2023  
Discount 57.7% from List prices

spec™

MAS SIN 33721

## TAILOR Lounge Collection - MODULAR



### PRODUCT CODE

91 01 MC - NA

#### Series

91 : Tailor

#### Number of Seats

1 : Single Seat  
2 : Two Seat  
3 : Three Seat

#### Type

MC : Mid-Back Connected  
MIC : Mid-Back, Inside Curve, Connected  
MOC : Mid-Back, Outside Curve, Connected  
MBC : Bench, Connected

#### Arms

na : No Arm  
L : Left Arm  
R : Right Arm



### OPTIONS

#### ARM GAP



#### ARM CAP



#### TABLET ARM



#### POWER



In table



In seat

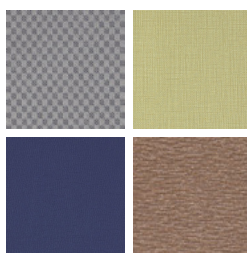
### FINISHES

#### FRAME



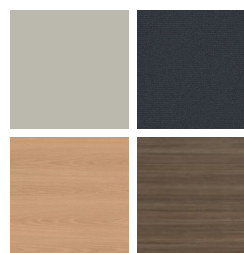
Select from one of our 76 standard Spectone colors

#### FABRIC



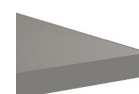
Select fabrics from one of our textile partners

#### LAMINATE



Select from 15 standard laminates or choose any standard Wilsonart, Nevamar, Formica, Arborite and Pionite matte finish laminates for no extra charge

#### EDGE

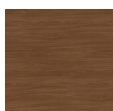


SE

#### ARM CAPS



Polyurethane



Wood\*

\*Wood arms are available in 9 standard stains or stain-to-match for no extra charge.

See Spectone Card or [specfurniture.com/tools-and-resources/product-resources/finishes](http://specfurniture.com/tools-and-resources/product-resources/finishes) for a complete list of finish options and colors.

Toll Free: 1-888-761-7732



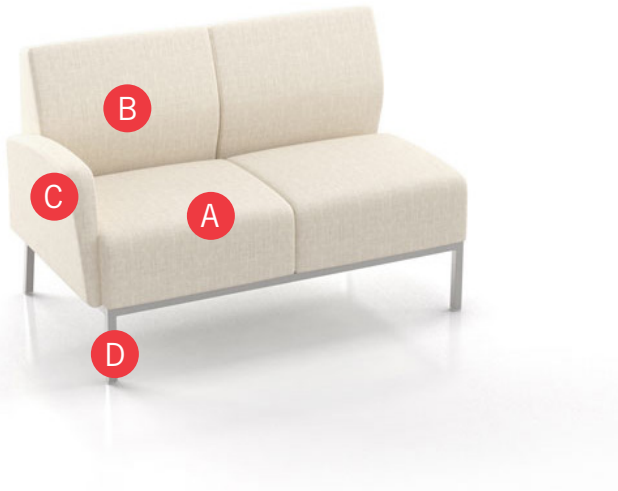
Pricing May 2023  
Discount 57.7% from List prices



MAS SIN 33721

## TAILOR Lounge Collection - MODULAR

### HOW TO ORDER



#### Specify Model

- A** Specify Fabric - Seat<sup>1</sup>  
*Manufacturer, Pattern Name, Color*
- B** Specify Fabric - Back<sup>1</sup>  
*Manufacturer, Pattern Name, Color*
- C** Specify Fabric - Arms<sup>1</sup>  
*Manufacturer, Pattern Name, Color*
- D** Specify Frame Finish

Optional: CAL 133, Moisture Barrier, 1" Gap Between Seat and Arm, Arm Caps, Tablet Arm, Sled Base\*, Connecting and Freestanding Tables, Power

Restrictions may apply. See price list tables below for more information.

<sup>1</sup> When multiple fabrics are specified on two and three seat chairs, please provide a drawing and legend for fabric placement.

\* Except Corner seat.

Model	Fabric - Seat 1	Fabric - Seat 2	Fabric - Back 1	Fabric - Back 2	Fabric - Arm 1	Frame Finish
9102MC-L	Momentum, Beeline, Canvas	Momentum, Beeline, Canvas	Momentum, Beeline, Canvas	Momentum, Beeline, Canvas	Momentum, Beeline, Canvas	Silver



Pricing May 2023  
Discount 57.7% from List prices

spec™

MAS SIN 33721

## TAILOR Lounge Collection - MODULAR

### LAYOUTS

To configure Tailor Modular, please specify left to right facing the configuration.

Tailor has two arm styles - end arms which are tapered, and connecting arms which are straight. Please provide a layout drawing with your purchase order or quote request and Customer Service will determine the appropriate arm (end or connecting) depending on their position within the layout. Arms are shipped assembled on the chair.



Tapered End Arm



Straight Connecting Arm



- A** Choose from one-, two-, three-seat and bariatric modular designs.

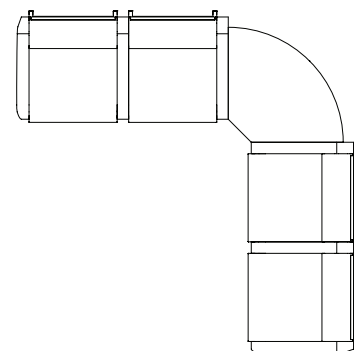
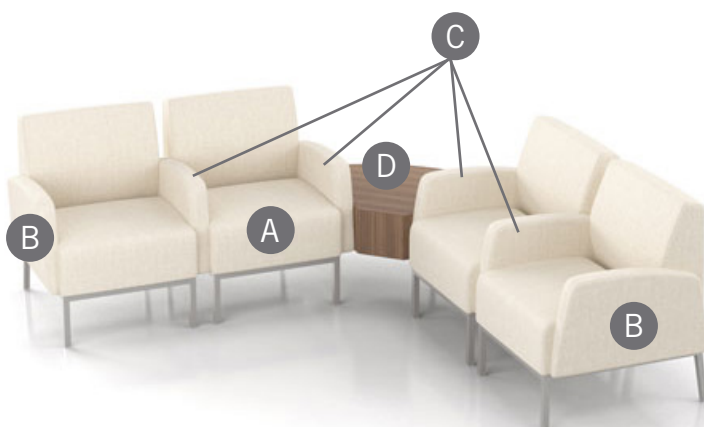
Note: Single seat configuration is shown in the example below.

- B** Tapered End Arms are installed at the ends of the layout run.

Note: Exceptions apply, see next page for more information.

- C** When arms are specified between seats or seat-to-table, a Straight Connecting Arm will be used.

- D** To complete your configuration, choose from end of run, spacer or corner connecting tables.



The configuration above can be specified as:

9101MC	Single Seat, Two Arms (one Tapered End, one Straight Connecting)
9101MC-R	Single Seat, With Right Arm Only (Straight Connecting)
91RC	Corner Table - Radius Corner
9101MC	Single Seat, Two Arms (two Straight Connecting)
9101MC-R	Single Seat, With Right Arm Only (Tapered End)



Pricing May 2023  
Discount 57.7% from List prices



MAS SIN 33721

## TAILOR Lounge Collection - MODULAR

### TAPERED END ARMS ON BOTH ENDS

Configurations with **arms on both ends** will have Tapered End Arms as standard.



Configuration above shows Tapered End Arms on outside of chairs, Straight Connecting Arms in center. Regardless of its complexity, when a configuration is ending in arms on both ends, the configuration will be specified with a Tapered End Arm as standard.

- A Tapered End Arm
- B Straight Connecting Arm

### STRAIGHT CONNECTING ARM ON ONE END

Configurations with an **arm on one end** will have Straight Connecting Arm as standard.

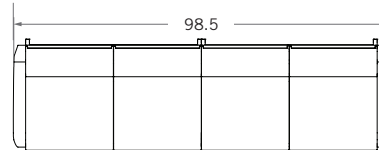
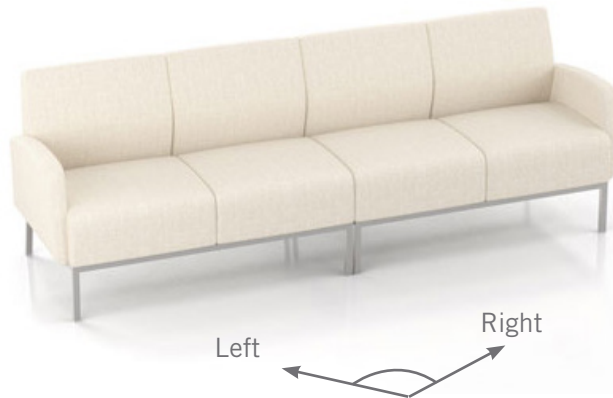


Configuration above is ending in a table on one end, and an arm on the other end of the run. Regardless of its complexity, when a configuration is ending in one arm only, the configuration will be specified with a Straight Connecting Arm as standard. Customers may specify Tapered End Arm at the end of such run, but a special note must be given to Customer Service at the time of quote/order. Note that the arm beside the table will always be a Straight Connecting Arm.



## TAILOR Lounge Collection - MODULAR

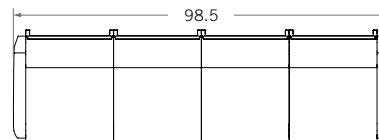
### FOUR SEAT DESIGN, EXAMPLE 1



A four-seat configuration may be specified as two two-seat sofas.

- |          |  |
|----------|--|
| 9102MC-L | Two Seat, With Left Arm Only<br>(Tapered End)  |
| 9102MC-R | Two Seat, With Right Arm Only<br>(Tapered End) |

### FOUR SEAT DESIGN, EXAMPLE 2

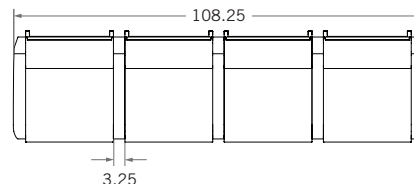


A four-seat configuration may also be specified as four single seat chairs. Please note that the number of legs in this case is double than in the example above.

Note: Specifying with single seats allows for higher flexibility, but this also increases the number of legs.

- |           |   |
|-----------|---|
| 9101MC-L  | Single Seat, With Left Arm Only<br>(Tapered End)  |
| 9101MC-NA | Single Seat, Without Arms                         |
| 9101MC-NA | Single Seat, Without Arms                         |
| 9101MC-R  | Single Seat, With Right Arm Only<br>(Tapered End) |

### FOUR SEAT DESIGN, EXAMPLE 3



Arms may be added between each seat, increasing the gap between each chair base, as well as the overall width of the configuration.

- |          |   |
|----------|---|
| 9101MC   | Single Seat, Two Arms<br>(one Tapered End, one Straight Connecting) |
| 9101MC-R | Single Seat, With Right Arm Only<br>(Straight Connecting)           |
| 9101MC-R | Single Seat, With Right Arm Only<br>(Straight Connecting)           |
| 9101MC-R | Single Seat, With Right Arm Only<br>(Tapered End)                   |



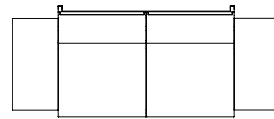
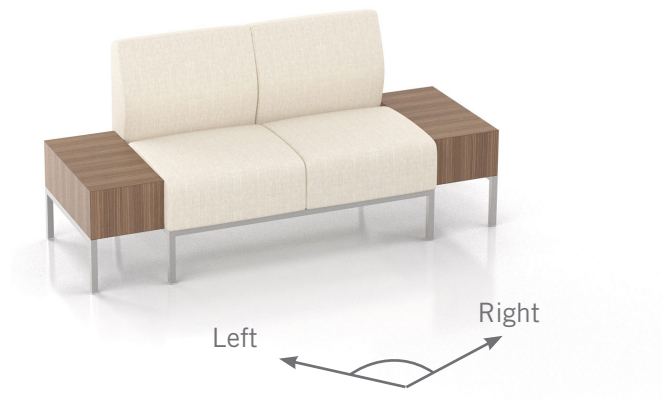
Pricing May 2023  
Discount 57.7% from List prices



MAS SIN 33721

## TAILOR Lounge Collection - MODULAR

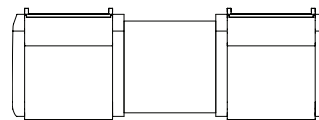
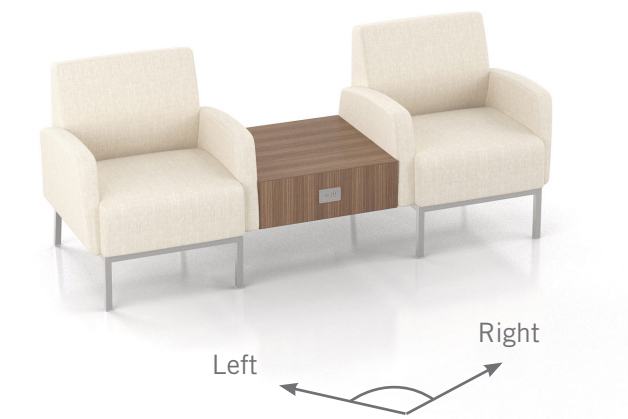
### END TABLE ON BOTH ENDS, EXAMPLE



91ERC - 24 x 12  
9102MC-NA  
91ERC - 24 x 12

End of Run Table Closed - Half Size  
Two Seat, Without Arms  
End of Run Table Closed - Half Size

### SPACER TABLE BETWEEN SEATS, EXAMPLE



9101MC  
91STC - 24 x 24  
COV-1U-S  
9101MC

Single Seat, Two Arms  
(one Tapered End, one Straight Connecting)  
Spacer Table Closed - Full Size  
Cove, 1 power, 2USB, Silver  
Single Seat, Two Arms  
(one Straight Connecting, one Tapered End)





Pricing May 2023  
Discount 57.7% from List prices

spec™

MAS SIN 33721

## TAILOR Lounge Collection - MODULAR

### Standard Features

- Separate seat and back
- Standard without a wall-saving frame, optional wall-saving frame available (to be specified on order)
- Clear, non-marring glides
- Meets BIFMA Seating Durability Test to 500 lbs
- One connecting plate per unit
- Ships assembled, 1/carton 24 cu ft

*For fabrics you wish railroaded or repeats larger than 5" x 5", please contact the factory with repeat information, and yardage requirement will be provided.*

*To ensure proper configuration please provide a layout drawing.*



Tapered End Arm



Straight Connecting Arm



Power (Optional)

### Options

- Polyurethane arm caps available in Black (B), Taupe RAL 7006 (T) or Sterling Grey (G), add **\$140** List per arm
- For wood arm caps, select from 9 standard stains, or stain-to-match for no extra charge, add **\$165** List per arm
- 1" gap between seat and arm available at **\$57** List per arm
- Swivel tablet arm (TA), add **\$650** List each. Cannot be installed between seats. Choose 12"x12" Square (SQ) or 16-1/2"x 11-1/2" Oval (OVAL). Height above floor is 27-1/2"
- Sled base (non wall-saving), add **\$120** List
- Upholstered arms/seat/back can match or contrast
- Cove Mini power module centered in the seat front is available in Black, Silver and White. Add **\$508** List per seat per module
- Antibacterial and antimicrobial fabrics available
- Connecting and freestanding tables available
- CAL 133 for 9101MC-NA, add **\$265** List per unit. CAL 133 for 9101MC, add **\$408** List per unit

### Single Seat, Without Arms

COM 2.75 yds

1.25 yds COM per single seat

1.5 yds COM per single back

MODEL	COM	GR 1	GR 2	GR 3	GR 4	GR 5	GR 6
<b>9101MC-NA</b>	<b>1219</b>	<b>1405</b>	<b>1464</b>	<b>1593</b>	<b>1783</b>	<b>1933</b>	<b>2124</b>

Dimensions (inches)

seat H	18.0	seat W	23.0		
total H	33.0	total W	23.0	depth	29.0



**9101MC-NA**  
43 lbs

### Single Seat, Two Arms

COM 4.25 yds

1.25 yds COM per single seat

1.5 yds COM per single back

0.75 yds COM per arm

MODEL	COM	GR 1	GR 2	GR 3	GR 4	GR 5	GR 6
<b>9101MC</b>	<b>1860</b>	<b>2152</b>	<b>2246</b>	<b>2447</b>	<b>2744</b>	<b>2973</b>	<b>3272</b>

Dimensions (inches)

seat H	18.0	seat W	23.0	arm H	24.5
total H	33.0	total W	29.5	depth	29.0



**9101MC**  
67 lbs



Pricing May 2023  
Discount 57.7% from List prices

spec™

MAS SIN 33721

## TAILOR Lounge Collection - MODULAR

### Standard Features

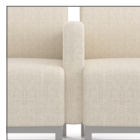
- Separate seat and back
- Standard without a wall-saving frame, optional wall-saving frame available (to be specified on order)
- Clear, non-marring glides
- Meets BIFMA Seating Durability Test to 500 lbs
- One connecting plate per unit
- Ships assembled, 1/carton 24 cu ft

*For fabrics you wish railroaded or repeats larger than 5" x 5", please contact the factory with repeat information, and yardage requirement will be provided.*

*To ensure proper configuration please provide a layout drawing.*



Tapered End Arm



Straight Connecting Arm



Power (Optional)

### Options

- Polyurethane arm caps available in Black (B), Taupe RAL 7006 (T) or Sterling Grey (G), add **\$140** List per arm
- For wood arm caps, select from 9 standard stains, or stain-to-match for no extra charge, add **\$165** List per arm
- 1" gap between seat and arm available at **\$57** List per arm
- Swivel tablet arm (TA), add **\$650** List each. Cannot be installed between seats. Choose 12"x12" Square (SQ) or 16-1/2"x 11-1/2" Oval (OVAL). Height above floor is 27-1/2"
- Sled base (non wall-saving), add **\$120** List
- Upholstered arms/seat/back can match or contrast
- Cove Mini power module centered in the seat front is available in Black, Silver and White. Add **\$508** List per seat per module
- Antibacterial and antimicrobial fabrics available
- Connecting and freestanding tables available
- CAL 133, add **\$337** List per unit

### Single Seat, With Right Arm Only

COM 3.5 yds

1.25 yds COM per single seat

1.5 yds COM per single back

0.75 yds COM per arm

MODEL	COM	GR 1	GR 2	GR 3	GR 4	GR 5	GR 6
<b>9101MC-R</b>	<b>1540</b>	<b>1778</b>	<b>1855</b>	<b>2022</b>	<b>2264</b>	<b>2451</b>	<b>2699</b>

Dimensions (inches)

seat H	18.0	seat W	23.0	arm H	24.5
total H	33.0	total W	26.25	depth	29.0



**9101MC-R**  
55 lbs

### Single Seat, With Left Arm Only

COM 3.5 yds

1.25 yds COM per single seat

1.5 yds COM per single back

0.75 yds COM per arm

MODEL	COM	GR 1	GR 2	GR 3	GR 4	GR 5	GR 6
<b>9101MC-L</b>	<b>1540</b>	<b>1778</b>	<b>1855</b>	<b>2022</b>	<b>2264</b>	<b>2451</b>	<b>2699</b>

Dimensions (inches)

seat H	18.0	seat W	23.0	arm H	24.5
total H	33.0	total W	26.25	depth	29.0



**9101MC-L**  
55 lbs





Pricing May 2023  
Discount 57.7% from List prices

spec™

MAS SIN 33721

## TAILOR Lounge Collection - MODULAR

### Standard Features

- Separate seat and back
- Meets seating durability test to 500 lbs per chair
- Standard without a wall-saving Frame
- Clear, non-marring glides
- One connecting plate per unit
- Ships assembled, 1/carton 24 cu ft

*For fabrics you wish railroaded or repeats larger than 5" x 5", please contact the factory with repeat information, and yardage requirement will be provided.*

*To ensure proper configuration please provide a layout drawing.*

### Options

- Upholstered seat/back can match or contrast
- Antibacterial and antimicrobial fabrics available
- Connecting and freestanding tables available
- CAL 133, add \$ **423** List per unit



### Single Seat, Corner Unit, Armless

COM 4.15 yds  
1.75 yds COM per single seat  
2.4 yds COM per single back

MODEL	COM	GR 1	GR 2	GR 3	GR 4	GR 5	GR 6
<b>9101MCCRNR</b>	<b>2873</b>	<b>3114</b>	<b>3189</b>	<b>3351</b>	<b>3591</b>	<b>3778</b>	<b>4015</b>

#### Dimensions (inches)

seat H	18.0	seat W	19.75		
total H	33.0	total W	27.5	depth	27.5



**9101MCCRNR**  
65 lbs



Pricing May 2023  
Discount 57.7% from List prices



MAS SIN 33721

## TAILOR Lounge Collection - MODULAR

### Standard Features

- Separate seat and back
- Standard without a wall-saving frame, optional wall-saving frame available (to be specified on order)
- Clear, non-marring glides
- Meets BIFMA Seating Durability Test to 750 lbs
- One connecting plate per unit
- Ships assembled, 1/carton 32 cu ft

*For fabrics you wish railroaded or repeats larger than 5" x 5", please contact the factory with repeat information, and yardage requirement will be provided.*

*To ensure proper configuration please provide a layout drawing.*



Tapered End Arm



Straight Connecting Arm



Power (Optional)

### Options

- Polyurethane arm caps available in Black (B), Taupe RAL 7006 (T) or Sterling Grey (G), add **\$140** List per arm
- For wood arm caps, select from 9 standard stains, or stain-to-match for no extra charge, add **\$165** List per arm
- 1" gap between seat and arm available at **\$57** List per arm
- Swivel tablet arm (TA), add **\$650** List each. Cannot be installed between seats. Choose 12"x12" Square (SQ) or 16-1/2"x 11-1/2" Oval (OVAL). Height above floor is 27-1/2"
- Sled base (non wall-saving), add **\$120** List
- Upholstered arms/seat/back can match or contrast
- Cove Mini power module centered in the seat front is available in Black, Silver and White. Add **\$508** List per seat per module
- Antibacterial and antimicrobial fabrics available
- Connecting and freestanding tables available
- CAL 133, add **\$483** List per unit

### Bariatric Single Seat, Two Arms

COM 5 yds  
1.5 yds COM per single seat  
2 yds COM per single back  
0.75 yds COM per arm

MODEL	COM	GR 1	GR 2	GR 3	GR 4	GR 5	GR 6
<b>9101GC</b>	<b>2031</b>	<b>2353</b>	<b>2469</b>	<b>2709</b>	<b>3062</b>	<b>3334</b>	<b>3693</b>

#### Dimensions (inches)

seat H	18.0	seat W	30.0	arm H	24.5
total H	33.0	total W	36.5	depth	29.0



**9101GC**  
75 lbs



Pricing May 2023  
Discount 57.7% from List prices

spec™

MAS SIN 33721

## TAILOR Lounge Collection - MODULAR

### Standard Features

- Separate seat and back
- Standard without a wall-saving frame, optional wall-saving frame available (to be specified on order)
- Clear, non-marring glides
- Meets BIFMA Seating Durability Test to 570 lbs
- One connecting plate per unit
- Ships assembled, 1/carton 43 cu ft

*For fabrics you wish railroaded or repeats larger than 5" x 5", please contact the factory with repeat information, and yardage requirement will be provided.*

*To ensure proper configuration please provide a layout drawing.*



Tapered End Arm



Straight Connecting Arm



Power (Optional)

### Options

- Polyurethane arm caps available in Black (B), Taupe RAL 7006 (T) or Sterling Grey (G), add **\$140** List per arm
- For wood arm caps, select from 9 standard stains, or stain-to-match for no extra charge, add **\$165** List per arm
- 1" gap between seat and arm available at **\$57** List per arm
- Swivel tablet arm (TA), add **\$650** List each. Cannot be installed between seats. Choose 12"x12" Square (SQ) or 16-1/2"x 11-1/2" Oval (OVAL). Height above floor is 27-1/2"
- Sled base (non wall-saving), add **\$120** List
- Upholstered arms/seat/back can match or contrast
- Cove Mini power module centered in the seat front is available in Black, Silver and White. Add **\$508** List per seat per module
- Antibacterial and antimicrobial fabrics available
- Connecting and freestanding tables available
- CAL 133 for 9102MC-NA, add **\$530** List per unit. CAL 133 for 9102MC, add **\$674** List per unit

### Two Seat, Without Arms

COM 5.5 yds

1.25 yds COM per single seat

1.5 yds COM per single back

MODEL	COM	GR 1	GR 2	GR 3	GR 4	GR 5	GR 6
<b>9102MC-NA</b>	<b>2117</b>	<b>2490</b>	<b>2613</b>	<b>2870</b>	<b>3251</b>	<b>3542</b>	<b>3930</b>

Dimensions (inches)

seat H	18.0	seat W	23.0				
total H	33.0	total W	46.0	depth	29.0		



**9102MC-NA**  
92 lbs

### Two Seat, With Two Arms

COM 7 yds

1.25 yds COM per single seat

1.5 yds COM per single back

0.75 yds COM per arm

MODEL	COM	GR 1	GR 2	GR 3	GR 4	GR 5	GR 6
<b>9102MC</b>	<b>2759</b>	<b>3237</b>	<b>3394</b>	<b>3723</b>	<b>4210</b>	<b>4582</b>	<b>5078</b>

Dimensions (inches)

seat H	18.0	seat W	23.0	arm H	24.5		
total H	33.0	total W	52.5	depth	29.0		



**9102MC**  
116 lbs



Pricing May 2023  
Discount 57.7% from List prices

spec™

MAS SIN 33721

## TAILOR Lounge Collection - MODULAR

### Standard Features

- Separate seat and back
- Standard without a wall-saving frame, optional wall-saving frame available (to be specified on order)
- Clear, non-marring glides
- Meets BIFMA Seating Durability Test to 570 lbs
- One connecting plate per unit
- Ships assembled, 1/carton 43 cu ft

*For fabrics you wish railroaded or repeats larger than 5" x 5", please contact the factory with repeat information, and yardage requirement will be provided.*

*To ensure proper configuration please provide a layout drawing.*



Tapered End Arm



Straight Connecting Arm



Power (Optional)

### Options

- Polyurethane arm caps available in Black (B), Taupe RAL 7006 (T) or Sterling Grey (G), add **\$140** List per arm
- For wood arm caps, select from 9 standard stains, or stain-to-match for no extra charge, add **\$165** List per arm
- 1" gap between seat and arm available at **\$57** List per arm
- Swivel tablet arm (TA), add **\$650** List each. Cannot be installed between seats. Choose 12"x12" Square (SQ) or 16-1/2"x 11-1/2" Oval (OVAL). Height above floor is 27-1/2"
- Sled base (non wall-saving), add **\$120** List
- Upholstered arms/seat/back can match or contrast
- Cove Mini power module centered in the seat front is available in Black, Silver and White. Add **\$508** List per seat per module
- Antibacterial and antimicrobial fabrics available
- Connecting and freestanding tables available
- CAL 133, add **\$604** List per unit

### Two Seat, With Right Arm Only

COM 6.25 yds  
1.25 yds COM per single seat  
1.5 yds COM per single back  
0.75 yds COM per arm

MODEL	COM	GR 1	GR 2	GR 3	GR 4	GR 5	GR 6
<b>9102MC-R</b>	<b>2440</b>	<b>2863</b>	<b>3002</b>	<b>3297</b>	<b>3729</b>	<b>4064</b>	<b>4505</b>

Dimensions (inches)

seat H	18.0	seat W	23.0	arm H	24.5
total H	33.0	total W	49.25	depth	29.0



**9102MC-R**  
104 lbs

### Two Seat, With Left Arm Only

COM 6.25 yds  
1.25 yds COM per single seat  
1.5 yds COM per single back  
0.75 yds COM per arm

MODEL	COM	GR 1	GR 2	GR 3	GR 4	GR 5	GR 6
<b>9102MC-L</b>	<b>2440</b>	<b>2863</b>	<b>3002</b>	<b>3297</b>	<b>3729</b>	<b>4064</b>	<b>4505</b>

Dimensions (inches)

seat H	18.0	seat W	23.0	arm H	24.5
total H	33.0	total W	49.25	depth	29.0



**9102MC-L**  
104 lbs



Pricing May 2023  
Discount 57.7% from List prices

spec™

MAS SIN 33721

## TAILOR Lounge Collection - MODULAR

### Standard Features

- Separate seat and back
- Standard without a wall-saving frame, optional wall-saving frame available (to be specified on order)
- Clear, non-marring glides
- Meets BIFMA Seating Durability Test to 750 lbs
- One connecting plate per unit
- Ships assembled, 1/carton 62 cu ft

*For fabrics you wish railroaded or repeats larger than 5" x 5", please contact the factory with repeat information, and yardage requirement will be provided.*

*To ensure proper configuration please provide a layout drawing.*



Tapered End Arm



Straight Connecting Arm



Power (Optional)

### Options

- Polyurethane arm caps available in Black (B), Taupe RAL 7006 (T) or Sterling Grey (G), add **\$140** List per arm
- For wood arm caps, select from 9 standard stains, or stain-to-match for no extra charge, add **\$165** List per arm
- 1" gap between seat and arm available at **\$57** List per arm
- Swivel tablet arm (TA), add **\$650** List each. Cannot be installed between seats. Choose 12"x12" Square (SQ) or 16-1/2"x 11-1/2" Oval (OVAL). Height above floor is 27-1/2"
- Sled base (non wall-saving), add **\$120** List
- Upholstered arms/seat/back can match or contrast
- Cove Mini power module centered in the seat front is available in Black, Silver and White. Add **\$508** List per seat per module
- Antibacterial and antimicrobial fabrics available
- Connecting and freestanding tables available
- CAL 133 for 9103MC-NA, add **\$795** List per unit. CAL 133 for 9103MC, add **\$942** List per unit

### Three Seat, Without Arms

COM 8.25 yds

1.25 yds COM per single seat

1.5 yds COM per single back

MODEL	COM	GR 1	GR 2	GR 3	GR 4	GR 5	GR 6
<b>9103MC-NA</b>	<b>3019</b>	<b>3576</b>	<b>3759</b>	<b>4146</b>	<b>4715</b>	<b>5155</b>	<b>5735</b>

Dimensions (inches)

seat H	18.0	seat W	23.0		
total H	33.0	total W	69.0	depth	29.0



**9103MC-NA**  
137 lbs

### Three Seat, With Two Arms

COM 9.75 yds

1.25 yds COM per single seat

1.5 yds COM per single back

0.75 yds COM per arm

MODEL	COM	GR 1	GR 2	GR 3	GR 4	GR 5	GR 6
<b>9103MC</b>	<b>3659</b>	<b>4322</b>	<b>4540</b>	<b>4999</b>	<b>5675</b>	<b>6196</b>	<b>6884</b>

Dimensions (inches)

seat H	18.0	seat W	23.0	arm H	24.5
total H	33.0	total W	75.5	depth	29.0



**9103MC**  
161 lbs



Pricing May 2023  
Discount 57.7% from List prices

spec™

MAS SIN 33721

## TAILOR Lounge Collection - MODULAR

### Standard Features

- Separate seat and back
- Standard without a wall-saving frame, optional wall-saving frame available (to be specified on order)
- Clear, non-marring glides
- Meets BIFMA Seating Durability Test to 750 lbs
- One connecting plate per unit
- Ships assembled, 1/carton 62 cu ft

*For fabrics you wish railroaded or repeats larger than 5" x 5", please contact the factory with repeat information, and yardage requirement will be provided.*

*To ensure proper configuration please provide a layout drawing.*



Tapered End Arm



Straight Connecting Arm



Power (Optional)

### Options

- Polyurethane arm caps available in Black (B), Taupe RAL 7006 (T) or Sterling Grey (G), add **\$140** List per arm
- For wood arm caps, select from 9 standard stains, or stain-to-match for no extra charge, add **\$165** List per arm
- 1" gap between seat and arm available at **\$57** List per arm
- Swivel tablet arm (TA), add **\$650** List each. Cannot be installed between seats. Choose 12"x12" Square (SQ) or 16-1/2"x 11-1/2" Oval (OVAL). Height above floor is 27-1/2"
- Sled base (non wall-saving), add **\$120** List
- Upholstered arms/seat/back can match or contrast
- Cove Mini power module centered in the seat front is available in Black, Silver and White. Add **\$508** List per seat per module
- Antibacterial and antimicrobial fabrics available
- Connecting and freestanding tables available
- CAL 133, add **\$867** List per unit

### Three Seat, With Right Arm Only

COM 9 yds

1.25 yds COM per single seat

1.5 yds COM per single back

0.75 yds COM per arm

MODEL	COM	GR 1	GR 2	GR 3	GR 4	GR 5	GR 6
<b>9103MC-R</b>	<b>3338</b>	<b>3950</b>	<b>4152</b>	<b>4573</b>	<b>5196</b>	<b>5674</b>	<b>6308</b>

Dimensions (inches)

seat H	18.0	seat W	23.0	arm H	24.5
total H	33.0	total W	72.25	depth	29.0



**9103MC-R**  
149 lbs

### Three Seat, With Left Arm Only

COM 9 yds

1.25 yds COM per single seat

1.5 yds COM per single back

0.75 yds COM per arm

MODEL	COM	GR 1	GR 2	GR 3	GR 4	GR 5	GR 6
<b>9103MC-L</b>	<b>3338</b>	<b>3950</b>	<b>4152</b>	<b>4573</b>	<b>5196</b>	<b>5674</b>	<b>6308</b>

Dimensions (inches)

seat H	18.0	seat W	23.0	arm H	24.5
total H	33.0	total W	72.25	depth	29.0



**9103MC-L**  
149 lbs





Pricing May 2023  
Discount 57.7% from List prices

spec™

MAS SIN 33721

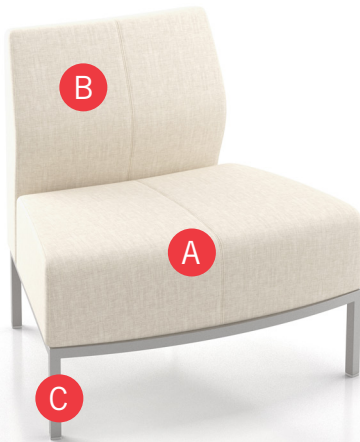
## TAILOR Lounge Collection - MODULAR - SERPENTINE

### HOW TO ORDER

#### Specify Model

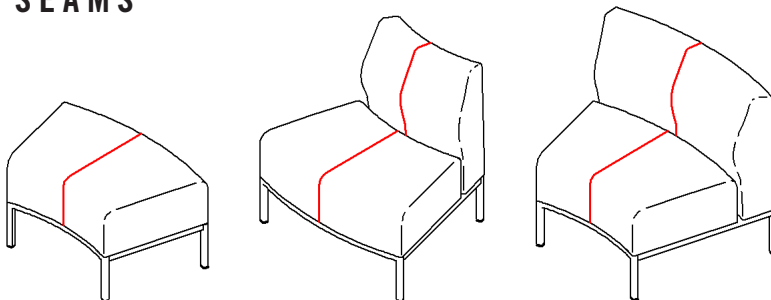
- A** Specify Fabric - Seat  
*Manufacturer, Pattern Name, Color*
- B** Specify Fabric - Back  
*Manufacturer, Pattern Name, Color*
- C** Specify Frame Finish

Optional: CAL 133, Moisture Barrier, Arms, Tablet Arm, Sled Base, Connecting and Freestanding Tables



Model	Fabric - Seat 1	Fabric - Back 1	Frame Finish
9101MOC	Momentum, Beeline, Canvas	Momentum, Beeline, Canvas	Silver

### SEAMS



Please note that all Tailor Serpentine models feature a centered vertical seam (red line). If patterned fabric is being used, the patterns may not line up along the seams or between chairs.

### 30 DEGREE ANGLE



All Tailor Serpentine models are designed at a 30° angle. To create a 90° corner, use three units of the same orientation (i.e., inside curve or outside curve). The bench, depending on how it's specified, can be used as either inside curve or outside curve unit.

Toll Free: 1-888-761-7732



Pricing May 2023  
Discount 57.7% from List prices

spec™

MAS SIN 33721

## TAILOR Lounge Collection - MODULAR - SERPENTINE

### Standard Features

- 30° angle
- Separate seat and back
- Non wall-saving frame
- **NOTE:** If ordering with other Tailor Modular designs, specify all connected seating within the configuration as non wall-saving.
- Clear, non-marring glides
- Meets BIFMA Seating Durability Test to 500 lbs
- One connecting plate per unit
- Ships assembled, 1/carton 24 cu ft

*For fabrics you wish railroaded or repeats larger than 5" x 5", please contact the factory with repeat information, and yardage requirement will be provided.*

*To ensure proper configuration please provide a layout drawing.*

### Options

- Tapered or Straight connecting arm
- Polyurethane arm caps available in Black (B), Taupe RAL 7006 (T) or Sterling Grey (G), add **\$140** List per arm
- For wood arm caps, select from 9 standard stains, or stain-to-match for no extra charge, add **\$165** List per arm
- 1" gap between seat and arm available at **\$57** List per arm
- Swivel tablet arm (TA), add **\$650** List each. Cannot be installed between seats. Choose 12"x12" Square (SQ) or 16-1/2"x 11-1/2" Oval (OVAL). Height above floor is 27-1/2"
- Sled base (non wall-saving), add **\$120** List
- Upholstered arms/seat/back can match or contrast
- Antibacterial and antimicrobial fabrics available
- Connecting and freestanding tables available
- CAL 133 for 9101MIC-NA, add **\$312** List per unit. CAL 133 for 9101MIC, add **\$457** List per unit



Tapered End Arm



Straight Connecting Arm



Non Wall-saving Frame

### Tailor Serpentine, Inside Curve, Without Arms

COM 3.25 yds

1.5 yds COM per single seat

1.75 yds COM per single back

MODEL	COM	GR 1	GR 2	GR 3	GR 4	GR 5	GR 6
<b>9101MIC-NA</b>	<b>2144</b>	<b>2376</b>	<b>2452</b>	<b>2607</b>	<b>2844</b>	<b>3019</b>	<b>3256</b>

Dimensions (inches)

seat H	18.0	seat W	22.0/33.0				
total H	33.0	total W	37.0	depth	29.5		



**9101MIC-NA**  
54 lbs

### Tailor Serpentine, Inside Curve, Two Arms

COM 4.75 yds

1.5 yds COM per single seat

1.75 yds COM per single back

0.75 yds COM per arm

MODEL	COM	GR 1	GR 2	GR 3	GR 4	GR 5	GR 6
<b>9101MIC</b>	<b>2773</b>	<b>3120</b>	<b>3235</b>	<b>3470</b>	<b>3822</b>	<b>4085</b>	<b>4445</b>

Dimensions (inches)

seat H	18.0	seat W	22.0/33.0				
total H	33.0	total W	43.5	depth	29.5		



**9101MIC**  
78 lbs



Pricing May 2023  
Discount 57.7% from List prices

spec™

MAS SIN 33721

## TAILOR Lounge Collection - MODULAR - SERPENTINE

### Standard Features

- 30° angle
- Separate seat and back
- Non wall-saving frame
- **NOTE:** If ordering with other Tailor Modular designs, specify all connected seating within the configuration as non wall-saving.
- Clear, non-marring glides
- Meets BIFMA Seating Durability Test to 500 lbs
- One connecting plate per unit
- Ships assembled, 1/carton 24 cu ft

*For fabrics you wish railroaded or repeats larger than 5" x 5", please contact the factory with repeat information, and yardage requirement will be provided.*

*To ensure proper configuration please provide a layout drawing.*

### Options

- Tapered or straight connecting arm
- Polyurethane arm caps available in Black (B), Taupe RAL 7006 (T) or Sterling Grey (G), add **\$140** List per arm
- For wood arm caps, select from 9 standard stains, or stain-to-match for no extra charge, add **\$165** List per arm
- 1" gap between seat and arm available at **\$57** List per arm
- Swivel tablet arm (TA), add **\$650** List each. Cannot be installed between seats. Choose 12"x12" Square (SQ) or 16-1/2"x 11-1/2" Oval (OVAL). Height above floor is 27-1/2"
- Sled base (non wall-saving), add **\$120** List
- Upholstered arms/seat/back can match or contrast
- Antibacterial and antimicrobial fabrics available
- Connecting and freestanding tables available
- CAL 133, add **\$384** List per unit



Tapered End Arm



Straight Connecting Arm



Non Wall-saving Frame

### Tailor Serpentine, Inside Curve, With Right Arm Only

COM 4.0 yds

1.5 yds COM per single seat

1.75 yds COM per single back

0.75 yds COM per arm

MODEL	COM	GR 1	GR 2	GR 3	GR 4	GR 5	GR 6
<b>9101MIC-R</b>	<b>2460</b>	<b>2748</b>	<b>2844</b>	<b>3038</b>	<b>3334</b>	<b>3553</b>	<b>3853</b>

Dimensions (inches)

seat H	18.0	seat W	22.0/33.0				
total H	33.0	total W	40.25	depth	29.5		



**9101MIC-R**  
66 lbs

### Tailor Serpentine, Inside Curve, With Left Arm Only

COM 4.0 yds

1.5 yds COM per single seat

1.75 yds COM per single back

0.75 yds COM per arm

MODEL	COM	GR 1	GR 2	GR 3	GR 4	GR 5	GR 6
<b>9101MIC-L</b>	<b>2460</b>	<b>2748</b>	<b>2844</b>	<b>3038</b>	<b>3334</b>	<b>3553</b>	<b>3853</b>

Dimensions (inches)

seat H	18.0	seat W	22.0/33.0				
total H	33.0	total W	40.25	depth	29.5		



**9101MIC-L**  
66 lbs



Pricing May 2023  
Discount 57.7% from List prices

spec™

MAS SIN 33721

## TAILOR Lounge Collection - MODULAR - SERPENTINE

### Standard Features

- 30° angle
- Separate seat and back
- Non wall-saving frame
- **NOTE:** If ordering with other Tailor Modular designs, specify all connected seating within the configuration as non wall-saving.
- Clear, non-marring glides
- Meets BIFMA Seating Durability Test to 500 lbs
- One connecting plate per unit
- Ships assembled, 1/carton 24 cu ft

*For fabrics you wish railroaded or repeats larger than 5" x 5", please contact the factory with repeat information, and yardage requirement will be provided.*

*To ensure proper configuration please provide a layout drawing.*

### Options

- Tapered or Straight connecting arm
- Polyurethane arm caps available in Black (B), Taupe RAL 7006 (T) or Sterling Grey (G), add **\$140** List per arm
- For wood arm caps, select from 9 standard stains, or stain-to-match for no extra charge, add **\$165** List per arm
- 1" gap between seat and arm available at **\$57** List per arm
- Swivel tablet arm (TA), add **\$650** List each. Cannot be installed between seats. Choose 12"x12" Square (SQ) or 16-1/2"x 11-1/2" Oval (OVAL). Height above floor is 27-1/2"
- Sled base (non wall-saving), add **\$120** List
- Upholstered arms/seat/back can match or contrast
- Antibacterial and antimicrobial fabrics available
- Connecting and freestanding tables available
- CAL 133 for 9101MOC-NA, add **\$308** List per unit. CAL 133 for 9101MOC, add **\$453** List per unit



Tapered End Arm



Straight Connecting Arm



Non Wall-saving Frame

### Tailor Serpentine, Outside Curve, Without Arms

COM 3.2 yds

1.5 yds COM per single seat

1.7 yds COM per single back

MODEL	COM	GR 1	GR 2	GR 3	GR 4	GR 5	GR 6
<b>9101MOC-NA</b>	<b>2029</b>	<b>2262</b>	<b>2337</b>	<b>2493</b>	<b>2729</b>	<b>2904</b>	<b>3145</b>

Dimensions (inches)

seat H	18.0	seat W	33.0/22.0				
total H	33.0	total W	37.0	depth	29.5		



**9101MOC-NA**  
46 lbs

### Tailor Serpentine, Outside Curve, Two Arms

COM 4.7 yds

1.5 yds COM per single seat

1.7 yds COM per single back

0.75 yds COM per arm

MODEL	COM	GR 1	GR 2	GR 3	GR 4	GR 5	GR 6
<b>9101MOC</b>	<b>2659</b>	<b>3006</b>	<b>3120</b>	<b>3356</b>	<b>3709</b>	<b>3971</b>	<b>4331</b>

Dimensions (inches)

seat H	18.0	seat W	33.0/22.0				
total H	33.0	total W	43.5	depth	29.5		



**9101MOC**  
70 lbs



Pricing May 2023  
Discount 57.7% from List prices

spec™

MAS SIN 33721

## TAILOR Lounge Collection - MODULAR - SERPENTINE

### Standard Features

- 30° angle
- Separate seat and back
- Non wall-saving frame
- **NOTE:** If ordering with other Tailor Modular designs, specify all connected seating within the configuration as non wall-saving.
- Clear, non-marring glides
- Meets BIFMA Seating Durability Test to 500 lbs
- One connecting plate per unit
- Ships assembled, 1/carton 24 cu ft

*For fabrics you wish railroaded or repeats larger than 5" x 5", please contact the factory with repeat information, and yardage requirement will be provided.*

*To ensure proper configuration please provide a layout drawing.*

### Options

- Tapered or straight connecting arm
- Polyurethane arm caps available in Black (B), Taupe RAL 7006 (T) or Sterling Grey (G), add **\$140** List per arm
- For wood arm caps, select from 9 standard stains, or stain-to-match for no extra charge, add **\$165** List per arm
- 1" gap between seat and arm available at **\$57** List per arm
- Swivel tablet arm (TA), add **\$650** List each. Cannot be installed between seats. Choose 12"x12" Square (SQ) or 16-1/2"x 11-1/2" Oval (OVAL). Height above floor is 27-1/2"
- Sled base (non wall-saving), add **\$120** List
- Upholstered arms/seat/back can match or contrast
- Antibacterial and antimicrobial fabrics available
- Connecting and freestanding tables available
- CAL 133, add **\$380** List per unit



Tapered End Arm



Straight Connecting Arm



Non Wall-saving Frame

### Tailor Serpentine, Outside Curve, With Right Arm Only

COM 3.95 yds

1.5 yds COM per single seat

1.7 yds COM per single back

0.75 yds COM per arm

MODEL	COM	GR 1	GR 2	GR 3	GR 4	GR 5	GR 6
<b>9101MOC-R</b>	<b>2346</b>	<b>2635</b>	<b>2729</b>	<b>2925</b>	<b>3219</b>	<b>3439</b>	<b>3739</b>

Dimensions (inches)

seat H	18.0	seat W	33.0/22.0				
total H	33.0	total W	40.25	depth	29.5		



**9101MOC-R**  
58 lbs

### Tailor Serpentine, Outside Curve, With Left Arm Only

COM 3.95 yds

1.5 yds COM per single seat

1.7 yds COM per single back

0.75 yds COM per arm

MODEL	COM	GR 1	GR 2	GR 3	GR 4	GR 5	GR 6
<b>9101MOC-L</b>	<b>2346</b>	<b>2635</b>	<b>2729</b>	<b>2925</b>	<b>3219</b>	<b>3439</b>	<b>3739</b>

Dimensions (inches)

seat H	18.0	seat W	33.0/22.0				
total H	33.0	total W	40.25	depth	29.5		



**9101MOC-L**  
58 lbs



Pricing May 2023  
Discount 57.7% from List prices

spec™

## TAILOR Lounge Collection - MODULAR - SERPENTINE

MAS SIN 33721

### Standard Features

- 30° angle
- Non wall-saving frame
- **NOTE:** If ordering with other Tailor Modular designs, specify all connected seating within the configuration as non wall-saving.
- Clear, non-marring glides
- Meets BIFMA Seating Durability Test to 500 lbs
- One connecting plate per unit
- Ships assembled, 1/carton 11 cu ft

*For fabrics you wish railroaded or repeats larger than 5" x 5", please contact the factory with repeat information, and yardage requirement will be provided.*

*To ensure proper configuration please provide a layout drawing.*

### Options

- Swivel tablet arm (TA), add **\$650** List each. Cannot be installed between seats. Choose 12"x12" Square (SQ) or 16-1/2"x 11-1/2" Oval (OVAL). Height above floor is 27-1/2"
- Sled base (non wall-saving), add **\$120**List
- Antibacterial and antimicrobial fabrics available
- CAL 133, add **\$145** List per unit



Non Wall-saving Frame

### Tailor Serpentine, Bench

COM 1.5 yds  
1.5 yds COM per single seat

MODEL	COM	GR 1	GR 2	GR 3	GR 4	GR 5	GR 6
<b>9101MBC</b>	<b>1280</b>	<b>1388</b>	<b>1422</b>	<b>1497</b>	<b>1606</b>	<b>1689</b>	<b>1801</b>

#### Dimensions (inches)

seat H	18.0	seat W	22.0/33.0				
total H	18.0	total W	33.0	depth	22.0		



**9101MBC**  
32 lbs





Pricing May 2023  
Discount 57.7% from List prices

spec™

MAS SIN 33721

## TAILOR Lounge Collection - MODULAR TABLES

### Standard Features

- Tables in laminate or veneer
- Select laminate tops from 15 standard laminates or choose any standard Wilsonart, Nevamar, Formica, Arborite and Pionite matte finish laminates for no extra charge
- 9 standard veneers. Stain-to-match available for no extra charge
- Tables available with Self Edge (SE) only
- Steel table legs available in any Spectone color
- Tops utilize NU Green earth friendly core
- Clear, non-marring glides
- One connecting plate per unit
- Ships KD
- 17" height

### Options

- To add Cove Mini, clamp mounted with 1 power, 2 USB (charging only), and a 108" long cord to Tailor modular tables, add **\$436** List.  
Cove will be located on the flat front face of the closed tables as standard. It is not recommended to specify power on open tables or curved surfaces of closed tables. Specify separately at time of order.



Black **COVSMC1P1U-B**  
Silver **COVSMC1P1U-S**  
White **COVSMC1P1U-W**

*To ensure proper configuration  
please provide a layout drawing.*

### Corner and Spacer Connecting Tables

Model		Laminate SE	Veneer SE	Weight	Cu.Ft.
91STC - 24X24	SPACER TABLE CLOSED - FULL SIZE	1052	1473	32	11
91STO - 24X24	SPACER TABLE OPEN - FULL SIZE	1079	1511	30	11
91STC - 24X12	SPACER TABLE CLOSED - HALF SIZE	986	1377	20	7
91STO - 24X12	SPACER TABLE OPEN - HALF SIZE	1011	1415	20	7
91ERC - 24X24	END OF RUN TABLE CLOSED - FULL SIZE	1269	1777	33	11
91ERO - 24X24	END OF RUN TABLE OPEN - FULL SIZE	1296	1814	31	11
91ERC - 24X12	END OF RUN TABLE CLOSED - HALF SIZE	1201	1682	21	7
91ERO - 24X12	END OF RUN TABLE OPEN - HALF SIZE	1227	1719	21	7
91ERB	END OF RUN TABLE - BULLET	1381	1934	36	14
91HM	END OF RUN TABLE - HALF-MOON	1846	2827	75	25
91RC	CORNER TABLE - 90 RADIUS CORNER	1381	1934	45	16
91RC45	CORNER TABLE - 45 RADIUS CORNER	1381	1934	32	12



91STC - 24 x 24  
32 lbs



91STO - 24 x 24  
30 lbs



91STC - 24 x 12  
20 lbs



91STO - 24 x 12  
20 lbs



91RC  
45 lbs



91RC45  
32 lbs



91ERC - 24 x 24  
33 lbs



91ERO - 24 x 24  
31 lbs



91ERC - 24 x 12  
21 lbs



91ERO - 24 x 12  
21 lbs



91ERB  
36 lbs



91HM  
75 lbs