

COOPER COLLECTION - HUNTSVILLE Lounge Seating

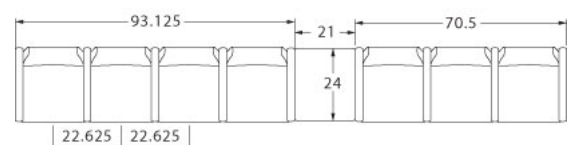
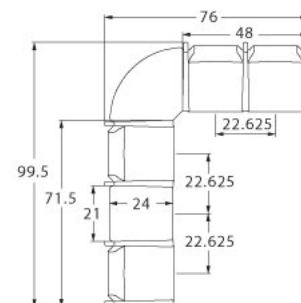
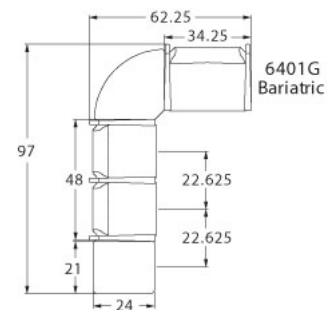
LAYOUTS



Description

- Spec's Huntsville offers the softer look and feel of wood, without sacrificing high durability.
- Your layout possibilities are unlimited with spacer, radius and corner tables – for both standard and bariatric seating in virtually any combination.
- Bariatric seating is a 30" wide seat and is load tested to 750 lbs. Cannot be connected to other bariatric seats.
- 21" seat width is standard.
- Standard in maple in any of 9 standard stains or stain-to-match for no extra charge.
- Choice of wood or polyurethane arms which are replaceable in the field.
- All models offer a choice of no center arms, half arms or full arms to the floor.
- Wall-saving frame is standard to protect both wall and fabric.
- Glides and separate seat and back are standard.
- Please send a drawing of the configuration you require with your order.
- For fabrics you wish railroaded or repeats larger than 5" x 5", please contact the factory with repeat information and yardage requirement will be provided.

LAYOUTS AND DIMENSIONS



COOPER COLLECTION - HUNTSVILLE Lounge Seating



PRODUCT CODE

6421M

Collection

6 : Cooper

Series

4 : Huntsville

Center Arm

0 : Outside Arms

1 : Half Arms

2 : Full Arms

Number of Seats

1 : Single Seater

2 : Two Seater

3 : Three Seater

Chair Type

M : Midback

H : Highback

L : Loveseat

G : Bariatric



OPTIONS

ARM TYPE



Polyurethane or Wood

**This image does not represent actual product arm.*

PANEL ARMS



Half Panel Arms



Full Panel Arms

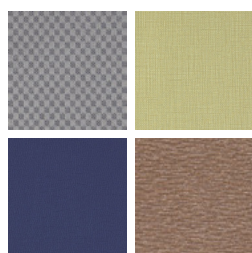
FINISHES

FRAME



Select from one of our 9 standard wood stains or stain-to-match for no extra charge

FABRIC



Select fabrics from one of our textile partners

ARMS



Black

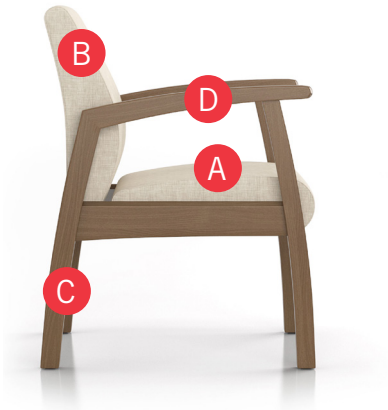
Select from one of our 9 standard wood stains or stain-to-match for no extra charge

See Spectone Card or specfurniture.com/tools-and-resources/product-resources/finishes for a complete list of finish options and colors.



COOPER COLLECTION - HUNTSVILLE Lounge Seating

HOW TO ORDER



Specify Model

- A Specify Fabric - Seat¹
Manufacturer, Pattern Name, Color
- B Specify Fabric - Back¹
Manufacturer, Pattern Name, Color
- C Specify Frame Finish
- D Specify Arm Type and Color
Polyurethane / Wood

Optional: Polyurethane Arm, CAL 133 Fire Barrier, Moisture Barrier, Half or Full Panel Arms, Connecting and Freestanding Tables, Ottoman, VELCRO® Removable Headrest, Vinyl Headrest Insert

¹ When multiple fabrics are specified on two and three seat chairs, please provide a drawing and legend for fabric placement.



Model	Fabric - Seat	Fabric - Back	Frame Finish	Arm Type and Color
6401M	Momentum, Beeline, Canvas	Momentum, Beeline, Canvas	Studio Teak Stain	Wood, Studio Teak Stain

COOPER COLLECTION - HUNTSVILLE Lounge Seating

Designed for today's healthcare facilities

Single Seater with arms

Standard Features

- Separate seat and back
- Wood arms
- Wood components in maple, in any of 9 standard stains or stain-to-match for no extra charge
- Wall-saving frame
- VELCRO® removable back covers
- Replaceable seats
- Threaded replaceable glides
- Use in connected layouts for no extra charge
- Ships assembled
- Ships 1/carton 15 cu ft

Options

- Replaceable rounded polyurethane arms (P) available in Black, add \$212 List
- Connected and freestanding tables
- Antibacterial and antimicrobial fabrics available
- Different fabric on seat and back for no extra charge
- CAL 133 fire barrier, add \$156 List per chair

For fabrics you wish railroaded or repeats larger than 5" x 5", please contact the factory. Yardage requirement will be provided.



Single Seater with arms

COM 1.75 yds

0.75 yd COM per single seat

1.0 yd COM per single back

MODEL	COM	GR 1	GR 2	GR 3	GR 4	GR 5	GR 6
6401M	1444	1564	1601	1681	1799	1889	2007

Dimensions (inches)

seat H	18.0	seat W	21.0	arm H	25.0
total H	33.75	total W	25.25	depth	27.5



6401M

COOPER COLLECTION - HUNTSVILLE Lounge Seating

Designed for today's healthcare facilities

Two and Three Seaters with outside arms

Standard Features

- Separate seat and back
- Wood arms
- Wood components in maple, in any of 9 standard stains or stain-to-match for no extra charge
- Wall-saving frame
- VELCRO® removable back covers
- Replaceable seats
- Threaded replaceable glides
- Use in connected layouts for no extra charge
- Ships assembled
- Ships 1/carton 26 cu ft (2 seater),
1/carton 39 cu ft (3 seater)

Options

- Replaceable rounded polyurethane arms (P) available in Black, add \$212 List
- Connected and freestanding tables
- Antibacterial and antimicrobial fabrics available
- Different fabric on seat and back for no extra charge
- CAL 133 fire barrier, add \$312 List for 6402M, \$468 List for 6403M

For fabrics you wish railroaded or repeats larger than 5" x 5", please contact the factory. Yardage requirement will be provided.



Two Seater with outside arms

COM 3.5 yds
0.75 yd COM per single seat
1.0 yd COM per single back

MODEL	COM	GR 1	GR 2	GR 3	GR 4	GR 5	GR 6
6402M	2072	2308	2387	2544	2780	2961	3196

Dimensions (inches)

seat H	18.0	seat W	21.0	arm H	25.0
total H	33.75	total W	46.5	depth	27.5



6402M

Three Seater with outside arms

COM 5.25 yds
0.75 yd COM per single seat
1.0 yd COM per single back

MODEL	COM	GR 1	GR 2	GR 3	GR 4	GR 5	GR 6
6403M	2701	3057	3174	3410	3766	4035	4386

Dimensions (inches)

seat H	18.0	seat W	21.0	arm H	25.0
total H	33.75	total W	67.5	depth	27.5



6403M

COOPER COLLECTION - HUNTSVILLE Lounge Seating

Designed for today's healthcare facilities

Two and Three Seaters with half arms

Standard Features

- Separate seat and back
- Wood arms
- Wood components in maple, in any of 9 standard stains or stain-to-match for no extra charge
- Wall-saving frame
- VELCRO® removable back covers
- Replaceable seats
- Threaded replaceable glides
- Use in connected layouts for no extra charge
- Ships assembled
- Ships 1/carton 26 cu ft (2 seater),
1/carton 39 cu ft (3 seater)

Options

- Replaceable rounded polyurethane arms (P) available in Black, add \$318 List for 6412M, or \$424 List for 6413M
- Connected and freestanding tables
- Antibacterial and antimicrobial fabrics available
- Different fabric on seat and back for no extra charge
- CAL 133 fire barrier, add \$312 List for 6412M, \$468 List for 6413M

For fabrics you wish railroaded or repeats larger than 5" x 5", please contact the factory. Yardage requirement will be provided.



Two Seater with half arms

COM 3.5 yds
0.75 yd COM per single seat
1.0 yd COM per single back

MODEL	COM	GR 1	GR 2	GR 3	GR 4	GR 5	GR 6
6412M	2674	2910	2988	3144	3383	3562	3796

Dimensions (inches)

seat H	18.0	seat W	21.0	arm H	25.0
total H	33.75	total W	48.0	depth	27.5



6412M

Three Seater with half arms

COM 5.25 yds
0.75 yd COM per single seat
1.0 yd COM per single back

MODEL	COM	GR 1	GR 2	GR 3	GR 4	GR 5	GR 6
6413M	3904	4254	4372	4611	4963	5232	5588

Dimensions (inches)

seat H	18.0	seat W	21.0	arm H	25.0
total H	33.75	total W	70.5	depth	27.5



6413M

COOPER COLLECTION - HUNTSVILLE Lounge Seating

Designed for today's healthcare facilities

Two and Three Seaters with full arms

Standard Features

- Separate seat and back
- Wood arms
- Wood components in maple, in any of 9 standard stains or stain-to-match for no extra charge
- Wall-saving frame
- VELCRO® removable back covers
- Replaceable seats
- Threaded replaceable glides
- Use in connected layouts for no extra charge
- Ships assembled
- Ships 1/carton 26 cu ft (2 seater),
1/carton 39 cu ft (3 seater)

Options

- Replaceable rounded polyurethane arms (P) available in Black, add \$318 List for 6422M, or \$424 List for 6423M
- Connected and freestanding tables
- Antibacterial and antimicrobial fabrics available
- Different fabric on seat and back for no extra charge
- CAL 133 fire barrier, add \$312 List for 6422M, \$468 List for 6423M

For fabrics you wish railroaded or repeats larger than 5" x 5", please contact the factory. Yardage requirement will be provided.



Two Seater with full arms

COM 3.5 yds
0.75 yd COM per single seat
1.0 yd COM per single back

MODEL	COM	GR 1	GR 2	GR 3	GR 4	GR 5	GR 6
6422M	2674	2910	2988	3144	3383	3562	3796

Dimensions (inches)

seat H	18.0	seat W	21.0	arm H	25.0
total H	33.75	total W	48.0	depth	27.5



6422M

Three Seater with full arms

COM 5.25 yds
0.75 yd COM per single seat
1.0 yd COM per single back

MODEL	COM	GR 1	GR 2	GR 3	GR 4	GR 5	GR 6
6423M	3904	4254	4372	4611	4963	5232	5588

Dimensions (inches)

seat H	18.0	seat W	21.0	arm H	25.0
total H	33.75	total W	70.5	depth	27.5



6423M

COOPER COLLECTION - HUNTSVILLE Lounge Seating

Designed for today's healthcare facilities

Loveseat with arms

Standard Features

- Separate seat and back
- Wood arms
- Wood components in maple, in any of 9 standard stains or stain-to-match for no extra charge
- Wall-saving frame
- VELCRO® removable back covers
- Replaceable seats
- Threaded replaceable glides
- Use in connected layouts for no extra charge
- Ships assembled
- Ships 1/carton 20 cu ft

Options

- Replaceable rounded polyurethane arms (P) available in Black, add \$212 List
- Connected and freestanding tables
- Antibacterial and antimicrobial fabrics available
- Different fabric on seat and back for no extra charge
- CAL 133 fire barrier, add \$240 List per chair

For fabrics you wish railroaded or repeats larger than 5" x 5", please contact the factory. Yardage requirement will be provided.

**Loveseat with arms**

COM 3.5 yds

1.75 yd COM per single seat

1.75 yd COM per single back

MODEL	COM	GR 1	GR 2	GR 3	GR 4	GR 5	GR 6
6401L	2242	2519	2611	2796	3065	3278	3558

Dimensions (inches)

seat H	18.0	seat W	42.0	arm H	25.0
total H	33.75	total W	44.75	depth	27.5

**6401L**

COOPER COLLECTION - HUNTSVILLE Lounge Seating

Designed for today's healthcare facilities

Bariatric Single Seater with arms

Standard Features

- Separate seat and back
- Wood arms
- Wood components in maple, in any of 9 standard stains or stain-to-match for no extra charge
- Wall-saving frame
- VELCRO® removable back covers
- Replaceable seats
- Threaded replaceable glides
- Use in connected layouts for no extra charge
- Bariatric seating cannot connect to bariatric seating
- Ships assembled
- Ships 1/carton 20 cu ft

Options

- Replaceable rounded polyurethane arms (P) available in Black, add \$212 List
- Connected and freestanding tables
- Antibacterial and antimicrobial fabrics available
- Different fabric on seat and back for no extra charge
- CAL 133 fire barrier, add \$196 List per chair

For fabrics you wish railroaded or repeats larger than 5" x 5", please contact the factory. Yardage requirement will be provided.



Bariatric Single Seater with arms

COM 3.0 yds

1.5 yd COM per single seat

1.5 yd COM per single back

MODEL	COM	GR 1	GR 2	GR 3	GR 4	GR 5	GR 6
6401G	1715	1949	2028	2187	2421	2603	2839

Dimensions (inches)

seat H	18.0	seat W	30.0	arm H	25.0
total H	33.75	total W	34.25	depth	27.5



6401G

COOPER COLLECTION - HUNTSVILLE Lounge Seating

Designed for today's healthcare facilities

Highback Single Seater with arms – Ottoman

Standard Features

- Separate seat and back
- Wood arms
- Wood components in maple, in any of 9 standard stains or stain-to-match for no extra charge
- Use in connected layouts for no extra charge
- VELCRO® removable back covers
- Replaceable seats
- Arms replaceable in the field
- Ships assembled
- Ships 1/carton 19 cu ft
- Ottoman ships 1/carton 5 cu ft

Options

- Replaceable rounded polyurethane arms (P) available in Black, add \$212 List
- Vinyl insert on top of the back, add \$55 List per chair
- Connected and freestanding tables
- Antibacterial and antimicrobial fabrics available
- Different fabric on seat and back for no extra charge
- CAL 133 fire barrier, add \$176 List for 6401H, or \$72 List for 6430F

For fabrics you wish railroaded or repeats larger than 5" x 5", please contact the factory. Yardage requirement will be provided.



Highback Single Seater with arms

COM 2.5 yds

0.75 yd COM per single seat

1.75 yds COM per single back

MODEL	COM	GR 1	GR 2	GR 3	GR 4	GR 5	GR 6
6401H	1546	1727	1789	1913	2098	2238	2475

Dimensions (inches)

seat H	18.0	seat W	21.0	arm H	25.0
total H	47.5	total W	25.5	depth	27.5



6401H

Ottoman

0.5 yd COM per ottoman

MODEL	COM	GR 1	GR 2	GR 3	GR 4	GR 5	GR 6
6430F	701	747	761	792	840	874	940

Ottoman Dimensions (inches)

H	11.5	W	19.25	depth	12.25
---	------	---	-------	-------	-------



6430F

COOPER COLLECTION - HUNTSVILLE Lounge Seating

Designed for today's healthcare facilities

Half and Full Panel Arms

To order half panel arms, add Z to model number,
e.g. 6401**Z**

To order full panel arms, add ZC to model number,
e.g. 6401**ZC**

**Pricing is for one half panel arm, e.g. for a single
seater chair with half panel arms, add two half panel
arms to cost of chair**

*For fabrics you wish railroaded or repeats larger than
5" x 5", please contact the factory. Yardage requirement
will be provided.*

Options

- Antibacterial and antimicrobial fabrics available
- CAL 133 fire barrier, add \$57 List per half arm, or \$111
List per full panel arm



Half & Full Panel Arms

COM 0.5 yds per half panel arm

MODEL	COM	GR 1	GR 2	GR 3	GR 4	GR 5	GR 6
Z	101	134	140	162	195	216	252

COM 0.75 yds per full panel arm

MODEL	COM	GR 1	GR 2	GR 3	GR 4	GR 5	GR 6
ZC	193	250	270	309	370	415	454



COOPER COLLECTION - HUNTSVILLE Lounge Seating

Designed for today's healthcare facilities

Freestanding Lounge Tables – Corner and Spacer Connecting Tables

Standard Features

- Tops in laminate or veneer
- Select laminate tops from 15 standard laminates or choose any standard Wilsonart, Nevamar, Formica, Arborite and Pionite matte finish laminates at no upcharge.
- Freestanding lounge tables available with PVC Flat (PVF), 2mm (2MM), exposed Baltic Birch plywood (PF, PKNR) or hardwood (HB) edge
- Connecting table tops available with PVC Flat (PVF) edge, Self edge (SE) or hardwood (HB) edge
- 9 standard veneer and hardwood edge stains. Stain-to-match available for no extra charge.
- Maple legs and maple table skirts stained the same
- Threaded replaceable glides
- 18" height

Options

- Custom size spacer tables for restricted spaces
- Other sizes may be available

Radius Corner Tables are recommended for open areas

Freestanding Lounge Tables

Model	Laminate PVF/SE/2MM	Laminate PF/PKNR/HB	Veneer HB	Cu.Ft.
64 - 24 x 24 SQ	1165	1417	1618	7.2
64 - 24 x 48 RE	1373	1652	1932	18
64 - 30 x 30 SQ	1304	1487	1699	13.5
64 - 22 DIA	1366	1831	2095	7.2



Corner and Spacer Connecting Tables

Model	Laminate PVF/SE	Laminate HB Edge	Veneer HB Edge	Cu.Ft.
64RC - 28 x 28 <i>Radius Corner Table</i>	1086	1456	1708	2
64SC - 28 x 28 <i>Square Corner Table</i>	1186	1441	1589	2
64TC - 45 degree <i>Corner Table</i>	1086	1456	1708	2
64ST - 21 x 24 <i>Spacer Table</i>	736	1040	1192	2
64ET - 21 x 24 <i>End Table</i>	985	1288	1440	2

