

## COOPER COLLECTION - MIDLAND Lounge Seating

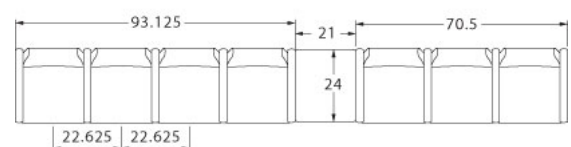
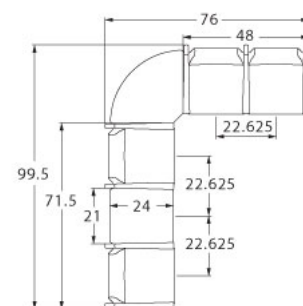
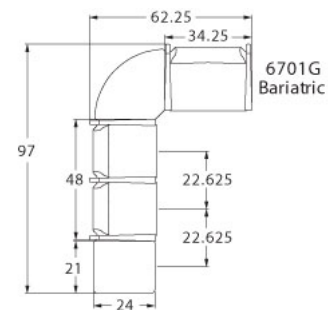
### LAYOUTS



### Description

- Spec's Midland offers a lighter, residential feel at a value price with extensive environmental considerations.
- Your layout possibilities are unlimited with spacer, radius and corner tables – for both standard and bariatric seating in virtually any combination.
- Bariatric seating is a 30" wide seat and is load tested to 750 lbs. Cannot be connected to other bariatric seats.
- 21" seat width is standard.
- Standard in maple in any of 9 standard stains or stain-to-match for no extra charge.
- Choice of wood or polyurethane arm caps which are replaceable in the field.
- All models offer a choice of no center arms, half arms or full arms to the floor.
- Wall-saving frame is standard to protect both wall and fabric.
- Glides and separate seat and back are standard.
- Please send a drawing of the configuration you require with your order.
- Ships assembled as one, two and three seater units.
- For fabrics you wish railroaded or repeats larger than 5" x 5", please contact the factory with repeat information and yardage requirement will be provided.

### LAYOUTS AND DIMENSIONS



## COOPER COLLECTION - MIDLAND Lounge Seating



## PRODUCT CODE

6 7 2 3 M

## Collection

6 : Cooper

## Series

7 : Midland

## Center Arm

0 : Outside Arms

1 : Half Arms

2 : Full Arms

## Number of Seats

1 : Single Seater

2 : Two Seater

3 : Three Seater

## Chair Type

M : Mid Back

H : Highback

L : Loveseat

G : Bariatric



## OPTIONS

## ARM CAP



Polyurethane

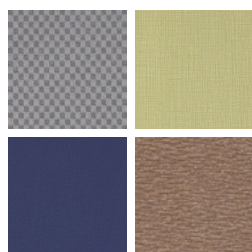
## FINISHES

## FRAME



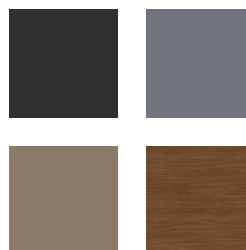
Select from one of our 9 standard wood stains or stain-to-match for no extra charge

## FABRIC



Select fabrics from one of our textile partners

## ARM CAP



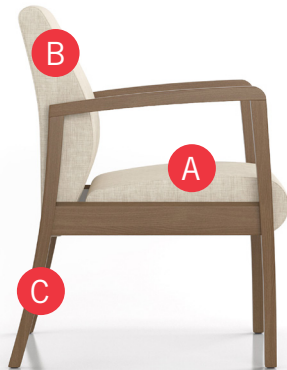
Select from one of our 9 standard wood stains or stain-to-match at no upcharge

See Spectone Card or [specfurniture.com/tools-and-resources/product-resources/finishes](https://specfurniture.com/tools-and-resources/product-resources/finishes) for a complete list of finish options and colors.



COOPER COLLECTION - MIDLAND Lounge Seating

HOW TO ORDER



Specify Model

- A Specify Fabric - Seat<sup>1</sup>  
*Manufacturer, Pattern Name, Color*
- B Specify Fabric - Back<sup>1</sup>  
*Manufacturer, Pattern Name, Color*
- C Specify Frame Finish

Optional: Polyurethane Arm Cap, CAL 133 Fire Barrier, Moisture Barrier, Connecting and Freestanding Tables, Ottoman, Vinyl Headrest Insert

<sup>1</sup> When multiple fabrics are specified on two and three seat chairs, please provide a drawing and legend for fabric placement.



Model	Fabric - Seat	Fabric - Back	Frame Finish
6701M	Momentum, Beeline, Canvas	Momentum, Beeline, Canvas	Studio Teak Stain

## COOPER COLLECTION - MIDLAND Lounge Seating

Designed for today's healthcare facilities

Single Seater with arms

### Standard Features

- Separate seat and back
- Wood components in maple, in any of 9 standard stains or stain-to-match for no extra charge
- Wall-saving frame
- VELCRO® removable back covers
- Replaceable seats
- Threaded replaceable glides
- Use in connected layouts for no extra charge
- Ships assembled as 1, 2 or 3 seaters
- Ships 1/carton 15 cu ft

### Options

- Replaceable polyurethane arm cap (P) available in Black, Sterling Grey and Taupe (RAL 7006) add \$154 List
- Connected and freestanding tables
- Antibacterial and antimicrobial fabrics available
- Different fabric on seat and back for no extra charge
- CAL 133 fire barrier, add \$156 List per chair

*For fabrics you wish railroaded or repeats larger than 5" x 5", please contact the factory. Yardage requirement will be provided.*



### Single Seater with arms

COM 1.75 yds

0.75 yd COM per single seat

1.0 yd COM per single back

MODEL	COM	GR 1	GR 2	GR 3	GR 4	GR 5	GR 6
<b>6701M</b>	<b>1180</b>	<b>1298</b>	<b>1335</b>	<b>1416</b>	<b>1531</b>	<b>1623</b>	<b>1740</b>

Dimensions (inches)

seat H	18.0	seat W	21.0	arm H	25.0
total H	33.75	total W	25.25	depth	26.25



**6701M**

## COOPER COLLECTION - MIDLAND Lounge Seating

Designed for today's healthcare facilities

Two and Three Seaters with outside arms

### Standard Features

- Separate seat and back
- Wood components in maple, in any of 9 standard stains or stain-to-match for no extra charge
- Wall-saving frame
- VELCRO® removable back covers
- Replaceable seats
- Threaded replaceable glides
- Use in connected layouts for no extra charge
- Ships assembled as 1, 2 or 3 seaters
- Ships 1/carton 26 cu ft (2 seater),  
1/carton 39 cu ft (3 seater)

### Options

- Replaceable polyurethane arm cap (P) available in Black, Sterling Grey and Taupe (RAL 7006) add \$154 List
- Connected and freestanding tables
- Antibacterial and antimicrobial fabrics available
- Different fabric on seat and back for no extra charge
- CAL 133 fire barrier, add \$312 List for 6702M, \$468 List for 6703M

*For fabrics you wish railroaded or repeats larger than 5" x 5", please contact the factory. Yardage requirement will be provided.*



### Two Seater with outside arms

COM 3.5 yds

0.75 yd COM per single seat

1.0 yd COM per single back

MODEL	COM	GR 1	GR 2	GR 3	GR 4	GR 5	GR 6
<b>6702M</b>	<b>1836</b>	<b>2074</b>	<b>2151</b>	<b>2311</b>	<b>2543</b>	<b>2723</b>	<b>2963</b>

Dimensions (inches)

seat H	18.0	seat W	21.0	arm H	25.0
total H	33.75	total W	44.75	depth	26.25



**6702M**

### Three Seater with outside arms

COM 5.25 yds

0.75 yd COM per single seat

1.0 yd COM per single back

MODEL	COM	GR 1	GR 2	GR 3	GR 4	GR 5	GR 6
<b>6703M</b>	<b>2534</b>	<b>2886</b>	<b>2998</b>	<b>3246</b>	<b>3589</b>	<b>3861</b>	<b>4219</b>

Dimensions (inches)

seat H	18.0	seat W	21.0	arm H	25.0
total H	33.75	total W	67.5	depth	26.25



**6703M**

## COOPER COLLECTION - MIDLAND Lounge Seating

Designed for today's healthcare facilities

Two and Three Seaters with half arms

### Standard Features

- Separate seat and back
- Wood components in maple, in any of 9 standard stains or stain-to-match for no extra charge
- Wall-saving frame
- VELCRO® removable back covers
- Replaceable seats
- Threaded replaceable glides
- Use in connected layouts for no extra charge
- Ships assembled as 1, 2 or 3 seaters
- Ships 1/carton 26 cu ft (2 seater),  
1/carton 39 cu ft (3 seater)

### Options

- Replaceable polyurethane arm caps (P) available in Black, Sterling Grey and Taupe (RAL 7006) add \$231 List for 6712M, or \$308 List for 6713M
- Connected and freestanding tables
- Antibacterial and antimicrobial fabrics available
- Different fabric on seat and back for no extra charge
- CAL 133 fire barrier, add \$312 List for 6712M, \$468 List for 6713M

*For fabrics you wish railroaded or repeats larger than 5" x 5", please contact the factory. Yardage requirement will be provided.*



### Two Seater with half arms

COM 3.5 yds

0.75 yd COM per single seat

1.0 yd COM per single back

MODEL	COM	GR 1	GR 2	GR 3	GR 4	GR 5	GR 6
<b>6712M</b>	<b>2074</b>	<b>2309</b>	<b>2387</b>	<b>2548</b>	<b>2779</b>	<b>2961</b>	<b>3199</b>

Dimensions (inches)

seat H	18.0	seat W	21.0	arm H	25.0
total H	33.75	total W	48.0	depth	26.25



6712M

### Three Seater with half arms

COM 5.25 yds

0.75 yd COM per single seat

1.0 yd COM per single back

MODEL	COM	GR 1	GR 2	GR 3	GR 4	GR 5	GR 6
<b>6713M</b>	<b>3035</b>	<b>3391</b>	<b>3503</b>	<b>3745</b>	<b>4093</b>	<b>4367</b>	<b>4722</b>

Dimensions (inches)

seat H	18.0	seat W	21.0	arm H	25.0
total H	33.75	total W	70.5	depth	26.25



6713M

## COOPER COLLECTION - MIDLAND Lounge Seating

Designed for today's healthcare facilities

Two and Three Seaters with full arms

### Standard Features

- Separate seat and back
- Wood components in maple, in any of 9 standard stains or stain-to-match for no extra charge
- Wall-saving frame
- VELCRO® removable back covers
- Replaceable seats
- Threaded replaceable glides
- Use in connected layouts for no extra charge
- Ships assembled as 1, 2 or 3 seaters
- Ships 1/carton 26 cu ft (2 seater),  
1/carton 39 cu ft (3 seater)

### Options

- Replaceable polyurethane arm caps (P) available in Black, Sterling Grey and Taupe (RAL 7006) add \$154 List for 6722M, or \$231 List for 6723M
- Connected and freestanding tables
- Antibacterial and antimicrobial fabrics available
- Different fabric on seat and back for no extra charge
- CAL 133 fire barrier, add \$312 List for 6722M, \$468 List for 6723M

*For fabrics you wish railroaded or repeats larger than 5" x 5", please contact the factory. Yardage requirement will be provided.*



### Two Seater with full arms

COM 3.5 yds

0.75 yd COM per single seat

1.0 yd COM per single back

MODEL	COM	GR 1	GR 2	GR 3	GR 4	GR 5	GR 6
<b>6722M</b>	<b>2074</b>	<b>2309</b>	<b>2387</b>	<b>2548</b>	<b>2779</b>	<b>2961</b>	<b>3199</b>

Dimensions (inches)

seat H	18.0	seat W	21.0	arm H	25.0
total H	33.75	total W	48.0	depth	26.25



6722M

### Three Seater with full arms

COM 5.25 yds

0.75 yd COM per single seat

1.0 yd COM per single back

MODEL	COM	GR 1	GR 2	GR 3	GR 4	GR 5	GR 6
<b>6723M</b>	<b>3035</b>	<b>3391</b>	<b>3503</b>	<b>3745</b>	<b>4093</b>	<b>4367</b>	<b>4722</b>

Dimensions (inches)

seat H	18.0	seat W	21.0	arm H	25.0
total H	33.75	total W	70.5	depth	26.25



6723M

## COOPER COLLECTION - MIDLAND Lounge Seating

Designed for today's healthcare facilities

Loveseat with arms

### Standard Features

- Separate seat and back
- Wood components in maple, in any of 9 standard stains or stain-to-match for no extra charge
- Wall-saving frame
- VELCRO® removable back covers
- Replaceable seats
- Threaded replaceable glides
- Use in connected layouts for no extra charge
- Ships assembled as 1, 2 or 3 seaters
- Ships 1/carton 20 cu ft

### Options

- Replaceable polyurethane arm cap (P) available in Black, Sterling Grey and Taupe (RAL 7006) add \$154 List
- Connected and freestanding tables
- Antibacterial and antimicrobial fabrics available
- Different fabric on seat and back for no extra charge
- CAL 133 fire barrier, add \$240 List per chair

*For fabrics you wish railroaded or repeats larger than 5" x 5", please contact the factory. Yardage requirement will be provided.*



### Loveseat with arms

COM 3.5 yds

1.75 yd COM per single seat

1.75 yd COM per single back

MODEL	COM	GR 1	GR 2	GR 3	GR 4	GR 5	GR 6
<b>6701L</b>	<b>1808</b>	<b>2085</b>	<b>2172</b>	<b>2362</b>	<b>2629</b>	<b>2842</b>	<b>3121</b>

Dimensions (inches)

seat H	18.0	seat W	42.0	arm H	25.0
total H	33.75	total W	46.25	depth	26.25



6701L



## COOPER COLLECTION - MIDLAND Lounge Seating

Designed for today's healthcare facilities

Bariatric Single Seater with arms

### Standard Features

- Separate seat and back
- Wood components in maple, in any of 9 standard stains or stain-to-match for no extra charge
- Wall-saving frame
- VELCRO® removable back covers
- Replaceable seats
- Threaded replaceable glides
- Use in connected layouts for no extra charge
- Ships assembled as 1, 2 or 3 seaters
- Ships 1/carton 20 cu ft

### Options

- Replaceable polyurethane arm cap (P) available in Black, Sterling Grey and Taupe (RAL 7006) add \$154 List
- Connected and freestanding tables
- Antibacterial and antimicrobial fabrics available
- Different fabric on seat and back for no extra charge
- CAL 133 fire barrier, add \$196 List per chair

*For fabrics you wish railroaded or repeats larger than 5" x 5", please contact the factory. Yardage requirement will be provided.*



### Bariatric Single Seater with arms

COM 3.0 yds

1.5 yd COM per single seat

1.5 yd COM per single back

MODEL	COM	GR 1	GR 2	GR 3	GR 4	GR 5	GR 6
<b>6701G</b>	<b>1535</b>	<b>1770</b>	<b>1846</b>	<b>2009</b>	<b>2237</b>	<b>2419</b>	<b>2657</b>

Dimensions (inches)

seat H	18.0	seat W	30.0	arm H	25.0
total H	33.75	total W	34.25	depth	26.25



**6701G**

## COOPER COLLECTION - MIDLAND Lounge Seating

Designed for today's healthcare facilities

Highback Single Seater with arms – Ottoman

### Standard Features

- Separate seat and back
- Wood components in maple, in any of 9 standard stains or stain-to-match for no extra charge
- Wall-saving frame
- Threaded replaceable glides
- Use in connected layouts for no extra charge
- Ships assembled as 1, 2 or 3 seaters
- Ships 1/carton 20 cu ft
- Ottoman ships 1/carton 5 cu ft

### Options

- Replaceable polyurethane arm cap (P) available in Black, Sterling Grey and Taupe (RAL 7006) add \$154 List
- Vinyl insert on top of the back, add \$49 List/seat back
- Connected and freestanding tables
- Antibacterial and antimicrobial fabrics available
- Different fabric on seat and back for no extra charge
- CAL 133 fire barrier, add \$176 List for 6401H, or \$72 List for 6430F

*For fabrics you wish railroaded or repeats larger than 5" x 5", please contact the factory. Yardage requirement will be provided.*



### Highback Single Seater with arms

COM 2.5 yds

0.75 yd COM per single seat

1.75 yds COM per single back

MODEL	COM	GR 1	GR 2	GR 3	GR 4	GR 5	GR 6
<b>6701H</b>	<b>1366</b>	<b>1567</b>	<b>1628</b>	<b>1763</b>	<b>1956</b>	<b>2105</b>	<b>2304</b>

Dimensions (inches)

seat H	18.0	seat W	21.0	arm H	25.0
total H	47.5	total W	25.25	depth	26.25



**6701H**

### Ottoman

COM 0.5 yd

MODEL	COM	GR 1	GR 2	GR 3	GR 4	GR 5	GR 6
<b>6730F</b>	<b>736</b>	<b>784</b>	<b>801</b>	<b>829</b>	<b>877</b>	<b>914</b>	<b>975</b>

Dimensions (inches)

H	11.5	W	19.25	depth	12.25
---	------	---	-------	-------	-------



**6730F**

## COOPER COLLECTION - MIDLAND Lounge Seating

Designed for today's healthcare facilities

Freestanding Lounge Tables – Corner and Spacer Connecting Tables

### Standard Features

- Tops in laminate or veneer
- Select laminate tops from 15 standard laminates or choose any standard Wilsonart, Nevamar, Formica, Arborite and Pionite matte finish laminates at no upcharge.
- Freestanding lounge tables available with PVC Flat (PVF), 2mm (2MM), exposed Baltic Birch plywood (PF, PKNR) or hardwood (HB) edge
- Connecting table tops available with PVC Flat (PVF) edge, Self edge (SE) or hardwood (HB) edge
- 9 standard veneer and hardwood edge stains. Stain-to-match available for no extra charge.
- Maple legs and maple table skirts stained the same
- Threaded replaceable glides
- 18" height

### Options

- Custom size spacer tables for restricted spaces
- Other sizes may be available

*Radius Corner Tables are recommended for open areas*

### Freestanding Lounge Tables

Model	Laminate PVF/SE/2MM	Laminate PF/PKNR/HB	Veneer HB	Cu.Ft.
67 - 24 x 24 SQ	<b>1165</b>	<b>1417</b>	<b>1618</b>	7.2
67 - 24 x 48 RE	<b>1373</b>	<b>1652</b>	<b>1932</b>	18
67 - 30 x 30 SQ	<b>1304</b>	<b>1487</b>	<b>1699</b>	13.5
67 - 22 DIA	<b>1366</b>	<b>1831</b>	<b>2095</b>	7.2



### Corner and Spacer Connecting Tables

Model	Laminate PVF/SE	Laminate HB Edge	Veneer HB Edge	Cu.Ft.
67RC - 28 x 28 <i>Radius Corner Table</i>	<b>1086</b>	<b>1456</b>	<b>1708</b>	2
67SC - 28 x 28 <i>Square Corner Table</i>	<b>1186</b>	<b>1441</b>	<b>1589</b>	2
67TC - 45 degree <i>Corner Table</i>	<b>1086</b>	<b>1456</b>	<b>1708</b>	2
67ST - 21 x 24 <i>Spacer Table</i>	<b>736</b>	<b>1040</b>	<b>1192</b>	2
67ET - 21 x 24 <i>End Table</i>	<b>985</b>	<b>1288</b>	<b>1440</b>	2

