

## DIGNITY2 Behavioral Health Series



## PRODUCT CODE

46 0 1 M - N - UU

## Series

46 : Dignity2

## Center Arm

0 : Outside Arms

## Number of Seats

1 : Single Seater

2 : Two Seater

3 : Three Seater

## Chair Type

M : Mid Back

G : Bariatric

## Arm Type

N/A : Regular Arm

N : No Arm

## Arm Panel Finish

LL : Laminate Outside and Inside

LU : Laminate Outside/Upholstered Inside

UL : Upholstered Outside/Laminated Inside

UU : Upholstered Outside and Inside

## OPTIONS

## ARM TYPE



Polyurethane



Wood



KYDEX®

End arm caps only.

Corian arms available. Call for pricing.

## WALL SAVING



## EXTENDED SIDE PANEL

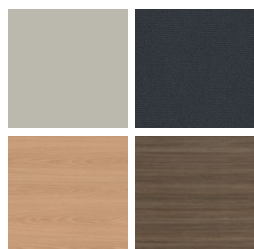


## SEAT PAN



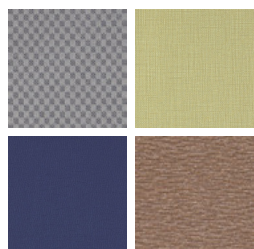
## FINISHES

## ARM PANEL LAMINATE



Select from 15 standard laminates or choose any standard Wilsonart, Nevamar, Formica, Arborite and Pionite matte finish laminates at no upcharge

## FABRIC



Select fabrics from one of our textile partners

## ARMS



Black



Sterling Grey



Taupe



Select from one of our 9 standard wood stains or stain-to-match at no upcharge

## FRAME



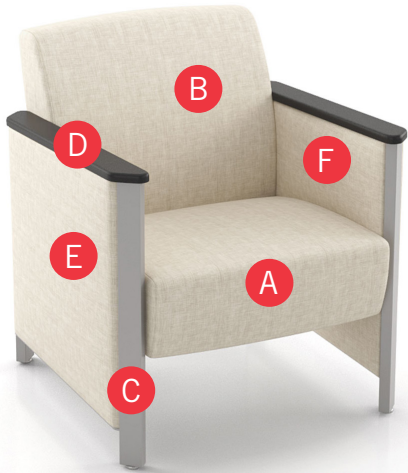
Select from one of our 76 standard Spectone colors

See Spectone Card or [specfurniture.com/tools-and-resources/product-resources/finishes](https://specfurniture.com/tools-and-resources/product-resources/finishes) for a complete list of finish options and colors.



DIGNITY2 Behavioral Health Series

HOW TO ORDER



Specify Model

- A** Specify Fabric - Seat<sup>1</sup>  
*Manufacturer, Pattern Name, Color*
- B** Specify Fabric - Back<sup>1</sup>  
*Manufacturer, Pattern Name, Color*
- C** Specify Frame Finish
- D** Specify Arm Cap Type and Color  
*Polyurethane / Wood / KYDEX® (\$)*
- E** Specify Outside/Inside Panel Finish  
**F** *For Laminate Panels: Manufacturer, Laminate Name, Laminate Code*  
*For Fabric Panels: Manufacturer, Pattern Name, Color*

Optional: KYDEX® Arm Cap, Additional Weight, Nylon Caps, Floor Mounting Straps, Wall Saving, Extended Side Panel, Elimination of Separated Seat and Back, CAL 133 Fire Barrier, Moisture Barrier, Connecting and Freestanding Tables, Dolly

<sup>1</sup> When multiple fabrics are specified on two and three seat chairs, please provide a drawing and legend for fabric placement.

Model	Fabric - Seat	Fabric - Back	Frame Finish	Arm Cap Type and Color	Outside Panel	Inside Panel
4601M-LU	Momentum, Beeline, Canvas	Momentum, Beeline, Canvas	Silver	Polyurethane, Black	Momentum, Beeline, Canvas	Momentum, Beeline, Canvas

## DIGNITY2 Behavioral Health Series

### Standard Features

- Separate seat and back
- Arm caps available in wood, or polyurethane
- Laminate or upholstered side panels on inside and outside of arm in various combinations
- Upholstered side panels can match or contrast seat/back
- Select from 15 standard laminates or choose any standard Wilsonart, Nevamar, Formica, Arborite and Pionite matte finish laminates for no extra charge.
- Sculpted steel leg in any Spectone finish
- No protruding legs or hardware
- Tamper proof fastenings
- Non-removable steel leveling glides
- Ships assembled, 1/carton 15 cu ft

*For fabrics you wish railroaded or repeats larger than 5" x 5", please contact the factory. Yardage requirement will be provided.*

### Options

- Polyurethane arm caps available in Black (B) or Taupe RAL 7006 (T) or Sterling Grey (G)
- For wood arm caps, select from 9 standard stains, or stain-to-match for no extra charge
- KYDEX® arm caps available in Black (B), Taupe RAL 7006 (T) or Sterling Grey (G), add suffix K and \$408
- Add up to 20 lbs of additional weight per seat, add \$192 List per seat
- Four white nylon caps can be added to prevent rust in areas with frequent cleaning/mopping. Add \$20 List
- Non-standard laminates, contact Spec for pricing
- Antibacterial and antimicrobial fabrics available
- Floor mounting straps available, add \$52 List per chair
- Connecting and freestanding tables
- CAL 133 fire barrier, add \$151 List for 4601M-LL, \$259 List for 4601M-LU, \$259 List for 4601M-UL, or \$361 List for 4601M-UU
- Elimination of separated seat and back available with either solid or perforated seat pan, call Customer Service

### Single Seater with arms

COM 1.85 yds

0.75 yd COM per single seat / 1.10 yd COM per single back

MODEL	COM	GR 1	GR 2	GR 3	GR 4	GR 5	GR 6
<b>4601M-LL</b>	<b>1941</b>	<b>2064</b>	<b>2103</b>	<b>2183</b>	<b>2304</b>	<b>2394</b>	<b>2514</b>

*Side panel – laminated, outside and inside*

COM 2.85 yds

0.75 yd COM per single seat / 1.10 yd COM per single back / .5 yd COM per panel

MODEL	COM	GR 1	GR 2	GR 3	GR 4	GR 5	GR 6
<b>4601M-LU</b>	<b>2095</b>	<b>2286</b>	<b>2348</b>	<b>2474</b>	<b>2663</b>	<b>2804</b>	<b>2994</b>

*Side panel – laminated, outside, upholstered inside*

COM 2.85 yds

0.75 yd COM per single seat / 1.10 yd COM per single back / .5 yd COM per panel

MODEL	COM	GR 1	GR 2	GR 3	GR 4	GR 5	GR 6
<b>4601M-UL</b>	<b>2095</b>	<b>2286</b>	<b>2348</b>	<b>2474</b>	<b>2663</b>	<b>2804</b>	<b>2994</b>

*Side panel – upholstered outside, laminated inside*

COM 3.85 yds

0.75 yd COM per single seat / 1.10 yd COM per single back / 1.0 yd COM per panel

MODEL	COM	GR 1	GR 2	GR 3	GR 4	GR 5	GR 6
<b>4601M-UU</b>	<b>2247</b>	<b>2507</b>	<b>2592</b>	<b>2766</b>	<b>3020</b>	<b>3216</b>	<b>3472</b>

*Side panel – upholstered, outside and inside*

Dimensions (inches)

seat H	18.0	seat W	23.0	arm H	26.0
total H	31.75	total W	28.5	depth	30.0



4601M

## DIGNITY2 Behavioral Health Series

### Standard Features

- Separate seat and back
- Arm caps available in wood, or polyurethane
- Laminate or upholstered side panels on inside and outside of arm in various combinations
- Upholstered side panels can match or contrast seat/back
- Select from 15 standard laminates or choose any standard Wilsonart, Nevamar, Formica, Arborite and Pionite matte finish laminates for no extra charge.
- Sculpted steel leg in any Spectone finish
- No protruding legs or hardware
- Tamper proof fastenings
- Non-removable steel leveling glides
- Ships assembled, 1/carton 15 cu ft

*For fabrics you wish railroaded or repeats larger than 5" x 5", please contact the factory. Yardage requirement will be provided.*

### Options

- Polyurethane arm caps available in Black (B) or Taupe RAL 7006 (T) or Sterling Grey (G)
- For wood arm caps, select from 9 standard stains, or stain-to-match for no extra charge
- KYDEX® arm caps available in Black (B), Taupe RAL 7006 (T) or Sterling Grey (G), add suffix K and \$408
- Four white nylon caps can be added to prevent rust in areas with frequent cleaning/mopping. Add \$20 List
- Non-standard laminates, contact Spec for pricing
- Antibacterial and antimicrobial fabrics available
- Floor mounting straps available, add \$52 List per chair
- Connecting and freestanding tables
- CAL 133 fire barrier, add \$305 List for 4602M-LL, \$408 List for 4602M-LU, \$408 List for 4602M-UL, or \$512 List for 4602M-UU
- Elimination of separated seat and back available with either solid or perforated seat pan, call Customer Service

### Two Seater with outside arms

COM 3.70 yds

0.75 yd COM per single seat / 1.10 yd COM per single back

MODEL	COM	GR 1	GR 2	GR 3	GR 4	GR 5	GR 6
<b>4602M-LL</b>	<b>2852</b>	<b>3093</b>	<b>3173</b>	<b>3333</b>	<b>3574</b>	<b>3753</b>	<b>3996</b>

*Side panel – laminated, outside and inside*

COM 4.70 yds

0.75 yd COM per single seat / 1.10 yd COM per single back / .5 yd COM per panel

MODEL	COM	GR 1	GR 2	GR 3	GR 4	GR 5	GR 6
<b>4602M-LU</b>	<b>3005</b>	<b>3315</b>	<b>3420</b>	<b>3622</b>	<b>3934</b>	<b>4168</b>	<b>4476</b>

*Side panel – laminated, outside, upholstered inside*

COM 4.70 yds

0.75 yd COM per single seat / 1.10 yd COM per single back / .5 yd COM per panel

MODEL	COM	GR 1	GR 2	GR 3	GR 4	GR 5	GR 6
<b>4602M-UL</b>	<b>3005</b>	<b>3315</b>	<b>3420</b>	<b>3622</b>	<b>3934</b>	<b>4168</b>	<b>4476</b>

*Side panel – upholstered outside, laminated inside*

COM 5.70 yds

0.75 yd COM per single seat / 1.10 yd COM per single back / 1.0 yd COM per panel

MODEL	COM	GR 1	GR 2	GR 3	GR 4	GR 5	GR 6
<b>4602M-UU</b>	<b>3156</b>	<b>3537</b>	<b>3662</b>	<b>3913</b>	<b>4289</b>	<b>4576</b>	<b>4958</b>

*Side panel – upholstered, outside and inside*

Dimensions (inches)

seat H	18.0	seat W	45.5	arm H	26.0
total H	31.75	total W	51.0	depth	30.0



4602M

## DIGNITY2 Behavioral Health Series

### Standard Features

- Separate seat and back
- Arm caps available in wood, or polyurethane
- Laminate or upholstered side panels on inside and outside of arm in various combinations
- Upholstered side panels can match or contrast seat/back
- Select from 15 standard laminates or choose any standard Wilsonart, Nevamar, Formica, Arborite and Pionite matte finish laminates for no extra charge.
- Sculpted steel leg in any Spectone finish
- No protruding legs or hardware
- Tamper proof fastenings
- Non-removable steel leveling glides
- Ships assembled, 1/carton 15 cu ft

*For fabrics you wish railroaded or repeats larger than 5" x 5", please contact the factory. Yardage requirement will be provided.*

### Options

- Polyurethane arm caps available in Black (B) or Taupe RAL 7006 (T) or Sterling Grey (G)
- For wood arm caps, select from 9 standard stains, or stain-to-match for no extra charge
- KYDEX® arm caps available in Black (B), Taupe RAL 7006 (T) or Sterling Grey (G), add suffix K and \$408
- Four white nylon caps can be added to prevent rust in areas with frequent cleaning/mopping. Add \$20 List
- Non-standard laminates, contact Spec for pricing
- Antibacterial and antimicrobial fabrics available
- Floor mounting straps available, add \$52 List per chair
- Connecting and freestanding tables
- CAL 133 fire barrier, add \$457 List for 4603M-LL, \$561 List for 4603M-LU, \$561 List for 4603M-UL, or \$666 List for 4603M-UU
- Elimination of separated seat and back available with either solid or perforated seat pan, call Customer Service

### Three Seater with outside arms

COM 5.55 yds

0.75 yd COM per single seat / 1.10 yd COM per single back

MODEL	COM	GR 1	GR 2	GR 3	GR 4	GR 5	GR 6
<b>4603M-LL</b>	<b>3761</b>	<b>4125</b>	<b>4244</b>	<b>4485</b>	<b>4846</b>	<b>5117</b>	<b>5481</b>

*Side panel – laminated, outside and inside*

COM 6.55 yds

0.75 yd COM per single seat / 1.10 yd COM per single back / .5 yd COM per panel

MODEL	COM	GR 1	GR 2	GR 3	GR 4	GR 5	GR 6
<b>4603M-LU</b>	<b>3912</b>	<b>4345</b>	<b>4487</b>	<b>4778</b>	<b>5205</b>	<b>5526</b>	<b>5961</b>

*Side panel – laminated, outside, upholstered inside*

COM 6.55 yds

0.75 yd COM per single seat / 1.10 yd COM per single back / .5 yd COM per panel

MODEL	COM	GR 1	GR 2	GR 3	GR 4	GR 5	GR 6
<b>4603M-UL</b>	<b>3912</b>	<b>4345</b>	<b>4487</b>	<b>4778</b>	<b>5205</b>	<b>5526</b>	<b>5961</b>

*Side panel – upholstered outside, laminated inside*

COM 7.55 yds

0.75 yd COM per single seat / 1.10 yd COM per single back / 1.0 yd COM per panel

MODEL	COM	GR 1	GR 2	GR 3	GR 4	GR 5	GR 6
<b>4603M-UU</b>	<b>4066</b>	<b>4568</b>	<b>4735</b>	<b>5067</b>	<b>5560</b>	<b>5938</b>	<b>6442</b>

*Side panel – upholstered, outside and inside*

Dimensions (inches)

seat H	18.0	seat W	68.0	arm H	26.0
total H	31.75	total W	74.0	depth	30.0



4603M

## DIGNITY2 Behavioral Health Series

### Standard Features

- Separate seat and back
- Arm caps available in wood, or polyurethane
- Laminate or upholstered side panels on inside and outside of arm in various combinations
- Upholstered side panels can match or contrast seat/back
- Select from 15 standard laminates or choose any standard Wilsonart, Nevamar, Formica, Arborite and Pionite matte finish laminates for no extra charge.
- Sculpted steel leg in any Spectone finish
- No protruding legs or hardware
- Tamper proof fastenings
- Non-removable steel leveling glides
- Ships assembled, 1/carton 15 cu ft

*For fabrics you wish railroaded or repeats larger than 5" x 5", please contact the factory. Yardage requirement will be provided.*

### Options

- Polyurethane arm caps available in Black (B) or Taupe RAL 7006 (T) or Sterling Grey (G)
- For wood arm caps, select from 9 standard stains, or stain-to-match for no extra charge
- KYDEX® arm caps available in Black (B), Taupe RAL 7006 (T) or Sterling Grey (G), add suffix K and \$408
- Add up to 20 lbs of additional weight per seat, add \$192 List per seat
- Four white nylon caps can be added to prevent rust in areas with frequent cleaning/mopping. Add \$20 List
- Non-standard laminates, contact Spec for pricing
- Antibacterial and antimicrobial fabrics available
- Floor mounting straps available, add \$52 List per chair
- Connecting and freestanding tables
- CAL 133 fire barrier, add \$190 List for 4601G-LL, \$297 List for 4601G-LU, \$297 List for 4601G-UL, or \$403 List for 4601G-UU
- Elimination of separated seat and back available with either solid or perforated seat pan, call Customer Service

### Bariatric Single Seater with arms

COM 3.25 yds

1.5 yd COM per single seat / 1.75 yd COM per single back

MODEL	COM	GR 1	GR 2	GR 3	GR 4	GR 5	GR 6
<b>4601G-LL</b>	<b>2510</b>	<b>2738</b>	<b>2810</b>	<b>2959</b>	<b>3183</b>	<b>3352</b>	<b>3576</b>

*Side panel – laminated, outside and inside*

COM 4.25 yds

1.5 yd COM per single seat / 1.75 yd COM per single back / .5 yd COM per panel

MODEL	COM	GR 1	GR 2	GR 3	GR 4	GR 5	GR 6
<b>4601G-LU</b>	<b>2664</b>	<b>2959</b>	<b>3055</b>	<b>3249</b>	<b>3539</b>	<b>3759</b>	<b>4053</b>

*Side panel – laminated, outside, upholstered inside*

COM 4.25 yds

1.5 yd COM per single seat / 1.75 yd COM per single back / .5 yd COM per panel

MODEL	COM	GR 1	GR 2	GR 3	GR 4	GR 5	GR 6
<b>4601G-UL</b>	<b>2664</b>	<b>2959</b>	<b>3055</b>	<b>3249</b>	<b>3539</b>	<b>3759</b>	<b>4053</b>

*Side panel – upholstered outside, laminated inside*

COM 5.25 yds

1.5 yd COM per single seat / 1.75 yd COM per single back / 1.0 yd COM per panel

MODEL	COM	GR 1	GR 2	GR 3	GR 4	GR 5	GR 6
<b>4601G-UU</b>	<b>2817</b>	<b>3181</b>	<b>3299</b>	<b>3539</b>	<b>3902</b>	<b>4173</b>	<b>4539</b>

*Side panel – upholstered, outside and inside*

Dimensions (inches)

seat H	18.0	seat W	31.0	arm H	26.0
total H	31.75	total W	36.5	depth	30.0



4601G

## DIGNITY2 Behavioral Health Series

### Standard Features

- Separate seat and back
- Arm caps available in wood, or polyurethane
- Laminate or upholstered side panels on inside and outside of arm in various combinations
- Upholstered side panels can match or contrast seat/back
- Select from 15 standard laminates or choose any standard Wilsonart, Nevamar, Formica, Arborite and Pionite matte finish laminates for no extra charge.
- Sculpted steel leg in any Spectone finish
- No protruding legs or hardware
- Tamper proof fastenings
- Non-removable steel leveling glides
- Ships assembled, 1/carton 15 cu ft

*For fabrics you wish railroaded or repeats larger than 5" x 5", please contact the factory. Yardage requirement will be provided.*

### Options

- Polyurethane arm caps available in Black (B) or Taupe RAL 7006 (T) or Sterling Grey (G)
- For wood arm caps, select from 9 standard stains, or stain-to-match for no extra charge
- KYDEX® arm caps available in Black (B), Taupe RAL 7006 (T) or Sterling Grey (G), add suffix K and \$408
- Add up to 20 lbs of additional weight per seat, add \$192 List per seat
- Four white nylon caps can be added to prevent rust in areas with frequent cleaning/mopping. Add \$20 List
- Non-standard laminates, contact Spec for pricing
- Antibacterial and antimicrobial fabrics available
- Floor mounting straps available, add \$52 List per chair
- Connecting and freestanding tables
- CAL 133 fire barrier, add \$151 List for 4601M-LL, \$259 List for 4601M-LU, \$259 List for 4601M-UL, or \$361 List for 4601M-UU
- Elimination of separated seat and back available with either solid or perforated seat pan, call Customer Service

### Single Seater with no arms

COM 1.85 yds

0.75 yd COM per single seat / 1.10 yd COM per single back

MODEL	COM	GR 1	GR 2	GR 3	GR 4	GR 5	GR 6
<b>4601M-LL-N</b>	<b>1913</b>	<b>2033</b>	<b>2075</b>	<b>2155</b>	<b>2274</b>	<b>2365</b>	<b>2487</b>

*Side panel – laminated, outside and inside*

COM 2.85 yds

0.75 yd COM per single seat / 1.10 yd COM per single back / .5 yd COM per panel

MODEL	COM	GR 1	GR 2	GR 3	GR 4	GR 5	GR 6
<b>4601M-LU-N</b>	<b>2065</b>	<b>2256</b>	<b>2318</b>	<b>2444</b>	<b>2635</b>	<b>2773</b>	<b>2964</b>

*Side panel – laminated, outside, upholstered inside*

COM 2.85 yds

0.75 yd COM per single seat / 1.10 yd COM per single back / .5 yd COM per panel

MODEL	COM	GR 1	GR 2	GR 3	GR 4	GR 5	GR 6
<b>4601M-UL-N</b>	<b>2065</b>	<b>2256</b>	<b>2318</b>	<b>2444</b>	<b>2635</b>	<b>2773</b>	<b>2964</b>

*Side panel – upholstered outside, laminated inside*

COM 3.85 yds

0.75 yd COM per single seat / 1.10 yd COM per single back / 1.0 yd COM per panel

MODEL	COM	GR 1	GR 2	GR 3	GR 4	GR 5	GR 6
<b>4601M-UU-N</b>	<b>2217</b>	<b>2479</b>	<b>2564</b>	<b>2736</b>	<b>2992</b>	<b>3185</b>	<b>3444</b>

*Side panel – upholstered, outside and inside*

Dimensions (inches)

seat H	18.0	seat W	23.0	arm H	17.5
total H	31.75	total W	28.5	depth	30.0



**4601M-N**



## DIGNITY2 Behavioral Health Series

### Standard Features

- Separate seat and back
- Arm caps available in wood, or polyurethane
- Laminate or upholstered side panels on inside and outside of arm in various combinations
- Upholstered side panels can match or contrast seat/back
- Select from 15 standard laminates or choose any standard Wilsonart, Nevamar, Formica, Arborite and Pionite matte finish laminates for no extra charge.
- Sculpted steel leg in any Spectone finish
- No protruding legs or hardware
- Tamper proof fastenings
- Non-removable steel leveling glides
- Ships assembled, 1/carton 15 cu ft

*For fabrics you wish railroaded or repeats larger than 5" x 5", please contact the factory. Yardage requirement will be provided.*

### Options

- Polyurethane arm caps available in Black (B) or Taupe RAL 7006 (T) or Sterling Grey (G)
- For wood arm caps, select from 9 standard stains, or stain-to-match for no extra charge
- KYDEX® arm caps available in Black (B), Taupe RAL 7006 (T), or Sterling Grey (G), add suffix K and \$408 List
- Four white nylon caps can be added to prevent rust in areas with frequent cleaning/mopping. Add \$20 List
- Non-standard laminates, contact Spec for pricing
- Antibacterial and antimicrobial fabrics available
- Floor mounting straps available, add \$52 List per chair
- Connecting and freestanding tables
- CAL 133 fire barrier, add \$305 List for 4602M-LL, \$408 List for 4602M-LU, \$408 List for 4602M-UL, or \$512 List for 4602M-UU
- Elimination of separated seat and back available with either solid or perforated seat pan, call Customer Service

### Two Seater with no arms

COM 3.70 yds

0.75 yd COM per single seat / 1.10 yd COM per single back

MODEL	COM	GR 1	GR 2	GR 3	GR 4	GR 5	GR 6
<b>4602M-LL-N</b>	<b>2822</b>	<b>3065</b>	<b>3145</b>	<b>3306</b>	<b>3541</b>	<b>3726</b>	<b>3967</b>

*Side panel – laminated, outside and inside*

COM 4.70 yds

0.75 yd COM per single seat / 1.10 yd COM per single back / .5 yd COM per panel

MODEL	COM	GR 1	GR 2	GR 3	GR 4	GR 5	GR 6
<b>4602M-LU-N</b>	<b>2975</b>	<b>3286</b>	<b>3387</b>	<b>3593</b>	<b>3903</b>	<b>4139</b>	<b>4449</b>

*Side panel – laminated, outside, upholstered inside*

COM 4.70 yds

0.75 yd COM per single seat / 1.10 yd COM per single back / .5 yd COM per panel

MODEL	COM	GR 1	GR 2	GR 3	GR 4	GR 5	GR 6
<b>4602M-UL-N</b>	<b>2975</b>	<b>3286</b>	<b>3387</b>	<b>3593</b>	<b>3903</b>	<b>4139</b>	<b>4449</b>

*Side panel – upholstered outside, laminated inside*

COM 5.70 yds

0.75 yd COM per single seat / 1.10 yd COM per single back / 1.0 yd COM per panel

MODEL	COM	GR 1	GR 2	GR 3	GR 4	GR 5	GR 6
<b>4602M-UU-N</b>	<b>3129</b>	<b>3511</b>	<b>3633</b>	<b>3887</b>	<b>4261</b>	<b>4547</b>	<b>4930</b>

*Side panel – upholstered, outside and inside*

Dimensions (inches)

seat H	18.0	seat W	45.0	arm H	17.5
total H	31.75	total W	51.0	depth	30.0



4602M-N



## DIGNITY2 Behavioral Health Series

### Standard Features

- Separate seat and back
- Arm caps available in wood, or polyurethane
- Laminate or upholstered side panels on inside and outside of arm in various combinations
- Upholstered side panels can match or contrast seat/back
- Select from 15 standard laminates or choose any standard Wilsonart, Nevamar, Formica, Arborite and Pionite matte finish laminates for no extra charge.
- Sculpted steel leg in any Spectone finish
- No protruding legs or hardware
- Tamper proof fastenings
- Non-removable steel leveling glides
- Ships assembled, 1/carton 15 cu ft

*For fabrics you wish railroaded or repeats larger than 5" x 5", please contact the factory. Yardage requirement will be provided.*

### Options

- Polyurethane arm caps available in Black (B) or Taupe RAL 7006 (T) or Sterling Grey (G)
- For wood arm caps, select from 9 standard stains, or stain-to-match for no extra charge
- KYDEX® end caps available in Black (B), Taupe RAL 7006 (T), or Sterling Grey (G), add suffix K and \$408 List
- Four white nylon caps can be added to prevent rust in areas with frequent cleaning/mopping. Add \$20 List
- Non-standard laminates, contact Spec for pricing
- Antibacterial and antimicrobial fabrics available
- Floor mounting straps available, add \$52 List per chair
- Connecting and freestanding tables
- CAL 133 fire barrier, add \$457 List for 4603M-LL, \$561 List for 4603M-LU, \$561 List for 4603M-UL, or \$666 List or 4603M-UU
- Elimination of separated seat and back available with either solid or perforated seat pan, call Customer Service

### Three Seater with no arms

COM 5.55 yds

0.75 yd COM per single seat / 1.10 yd COM per single back

MODEL	COM	GR 1	GR 2	GR 3	GR 4	GR 5	GR 6
<b>4603M-LL-N</b>	<b>3731</b>	<b>4096</b>	<b>4216</b>	<b>4457</b>	<b>4816</b>	<b>5088</b>	<b>5450</b>

*Side panel – laminated, outside and inside*

COM 6.55 yds

0.75 yd COM per single seat / 1.10 yd COM per single back / .5 yd COM per panel

MODEL	COM	GR 1	GR 2	GR 3	GR 4	GR 5	GR 6
<b>4603M-LU-N</b>	<b>3884</b>	<b>4318</b>	<b>4459</b>	<b>4748</b>	<b>5176</b>	<b>5498</b>	<b>5929</b>

*Side panel – laminated, outside, upholstered inside*

COM 6.55 yds

0.75 yd COM per single seat / 1.10 yd COM per single back / .5 yd COM per panel

MODEL	COM	GR 1	GR 2	GR 3	GR 4	GR 5	GR 6
<b>4603M-UL-N</b>	<b>3884</b>	<b>4318</b>	<b>4459</b>	<b>4748</b>	<b>5176</b>	<b>5498</b>	<b>5929</b>

*Side panel – upholstered outside, laminated inside*

COM 7.55 yds

0.75 yd COM per single seat / 1.10 yd COM per single back / 1.0 yd COM per panel

MODEL	COM	GR 1	GR 2	GR 3	GR 4	GR 5	GR 6
<b>4603M-UU-N</b>	<b>4037</b>	<b>4542</b>	<b>4701</b>	<b>5039</b>	<b>5534</b>	<b>5909</b>	<b>6410</b>

*Side panel – upholstered, outside and inside*

Dimensions (inches)

seat H	18.0	seat W	68.0	arm H	17.5
total H	31.75	total W	74.0	depth	30.0



**4603M-N**

## DIGNITY2 Behavioral Health Series

### Standard Features

- Separate seat and back
- Arm caps available in wood, or polyurethane
- Laminate or upholstered side panels on inside and outside of arm in various combinations
- Upholstered side panels can match or contrast seat/back
- Select from 15 standard laminates or choose any standard Wilsonart, Nevamar, Formica, Arborite and Pionite matte finish laminates for no extra charge.
- Sculpted steel leg in any Spectone finish
- No protruding legs or hardware
- Tamper proof fastenings
- Non-removable steel leveling glides
- Ships assembled, 1/carton 15 cu ft

*For fabrics you wish railroaded or repeats larger than 5" x 5", please contact the factory. Yardage requirement will be provided.*

### Options

- Polyurethane arm caps available in Black (B) or Taupe RAL 7006 (T) or Sterling Grey (G)
- For wood arm caps, select from 9 standard stains, or stain-to-match for no extra charge
- KYDEX® end arm caps available in Black (B), Taupe RAL 7006 (T), or Sterling Grey (G), add suffix K and \$408 List
- Add up to 20 lbs of additional weight per seat, add \$192 List per seat
- Four white nylon caps can be added to prevent rust in areas with frequent cleaning/mopping. Add \$20 List
- Non-standard laminates, contact Spec for pricing
- Antibacterial and antimicrobial fabrics available
- Floor mounting straps available, add \$52 List per chair
- Connecting and freestanding tables
- CAL 133 fire barrier, add \$190 List for 4601G-LL, \$297 List for 4601G-LU, \$297 List for 4601G-UL, or \$403 List for 4601G-UU
- Elimination of separated seat and back available with either solid or perforated seat pan, call Customer Service

### Bariatric Single Seater with no arms

COM 3.25 yds

1.5 yd COM per single seat / 1.75 yd COM per single back

MODEL	COM	GR 1	GR 2	GR 3	GR 4	GR 5	GR 6
<b>4601G-LL-N</b>	<b>2484</b>	<b>2710</b>	<b>2782</b>	<b>2931</b>	<b>3154</b>	<b>3322</b>	<b>3547</b>

*Side panel – laminated, outside and inside*

COM 4.25 yds

1.5 yd COM per single seat / 1.75 yd COM per single back / .5 yd COM per panel

MODEL	COM	GR 1	GR 2	GR 3	GR 4	GR 5	GR 6
<b>4601G-LU-N</b>	<b>2636</b>	<b>2931</b>	<b>3024</b>	<b>3219</b>	<b>3513</b>	<b>3730</b>	<b>4026</b>

*Side panel – laminated, outside, upholstered inside*

COM 4.25 yds

1.5 yd COM per single seat / 1.75 yd COM per single back / .5 yd COM per panel

MODEL	COM	GR 1	GR 2	GR 3	GR 4	GR 5	GR 6
<b>4601G-UL-N</b>	<b>2636</b>	<b>2931</b>	<b>3024</b>	<b>3219</b>	<b>3513</b>	<b>3730</b>	<b>4026</b>

*Side panel – upholstered outside, laminated inside*

COM 5.25 yds

1.5 yd COM per single seat / 1.75 yd COM per single back / 1.0 yd COM per panel

MODEL	COM	GR 1	GR 2	GR 3	GR 4	GR 5	GR 6
<b>4601G-UU-N</b>	<b>2789</b>	<b>3153</b>	<b>3271</b>	<b>3513</b>	<b>3873</b>	<b>4144</b>	<b>4508</b>

*Side panel – upholstered, outside and inside*

Dimensions (inches)

seat H	18.0	seat W	31.0	arm H	17.5
total H	31.75	total W	36.5	depth	30.0



**4601G-N**

## DIGNITY2 Behavioral Health Series

### Standard Features

- Separate seat and back
- Arm caps available in wood, or polyurethane
- Laminate or upholstered side panels on inside and outside of arm in various combinations
- Upholstered side panels can match or contrast seat/back
- Select from 15 standard laminates or choose any standard Wilsonart, Nevamar, Formica, Arborite and Pionite matte finish laminates for no extra charge.
- Sculpted steel leg in any Spectone finish
- No protruding legs or hardware
- Tamper proof fastenings
- Non-removable steel leveling glides
- Ships assembled, 1/carton 15 cu ft

*For fabrics you wish railroaded or repeats larger than 5" x 5", please contact the factory. Yardage requirement will be provided.*

### Options

- Polyurethane arm caps available in Black (B) or Taupe RAL 7006 (T) or Sterling Grey (G)
- For wood arm caps, select from 9 standard stains, or stain-to-match for no extra charge
- KYDEX® end and polyurethane middle arm caps available in Black (B), Taupe RAL 7006 (T), or Sterling Grey (G), add suffix K and \$612 List
- Four white nylon caps can be added to prevent rust in areas with frequent cleaning/mopping. Add \$20 List
- Non-standard laminates, contact Spec for pricing
- Antibacterial and antimicrobial fabrics available
- Floor mounting straps available, add \$52 List per chair
- Connecting and freestanding tables
- CAL 133 fire barrier, add \$305 List for 4612M-LL, \$462 List for 4612M-LU, \$408 List for 4612M-UL, or \$565 List or 4612M-UU
- Elimination of separated seat and back available with either solid or perforated seat pan, call Customer Service

### Two Seater with half arms

COM 3.70 yds

0.75 yd COM per single seat / 1.10 yd COM per single back

MODEL	COM	GR 1	GR 2	GR 3	GR 4	GR 5	GR 6
<b>4612M-LL</b>	<b>3400</b>	<b>3645</b>	<b>3727</b>	<b>3884</b>	<b>4127</b>	<b>4306</b>	<b>4548</b>

*Side panel – laminated, outside and inside*

COM 5.20 yds

0.75 yd COM per single seat / 1.10 yd COM per single back / .5 yd COM per panel

MODEL	COM	GR 1	GR 2	GR 3	GR 4	GR 5	GR 6
<b>4612M-LU</b>	<b>3554</b>	<b>3899</b>	<b>4015</b>	<b>4243</b>	<b>4590</b>	<b>4846</b>	<b>5192</b>

*Side panel – laminated outside, upholstered inside, half arms will be upholstered*

COM 5.20 yds

0.75 yd COM per single seat / 1.10 yd COM per single back / .5 yd COM per panel

MODEL	COM	GR 1	GR 2	GR 3	GR 4	GR 5	GR 6
<b>4612M-UL</b>	<b>3554</b>	<b>3899</b>	<b>4015</b>	<b>4243</b>	<b>4590</b>	<b>4846</b>	<b>5192</b>

*Side panel – upholstered outside, laminated inside, half arms will be laminated*

COM 6.20 yds

0.75 yd COM per single seat / 1.10 yd COM per single back / 1.0 yd COM per panel

MODEL	COM	GR 1	GR 2	GR 3	GR 4	GR 5	GR 6
<b>4612M-UU</b>	<b>3708</b>	<b>4121</b>	<b>4261</b>	<b>4534</b>	<b>4947</b>	<b>5259</b>	<b>5671</b>

*Side panel – upholstered, outside and inside*

Dimensions (inches)

seat H	18.0	seat W	48.0	arm H	26.0
total H	31.75	total W	54.0	depth	30.0



4612M

## DIGNITY2 Behavioral Health Series

### Standard Features

- Separate seat and back
- Arm caps available in wood, or polyurethane
- Laminate or upholstered side panels on inside and outside of arm in various combinations
- Upholstered side panels can match or contrast seat/back
- Select from 15 standard laminates or choose any standard Wilsonart, Nevamar, Formica, Arborite and Pionite matte finish laminates for no extra charge.
- Sculpted steel leg in any Spectone finish
- No protruding legs or hardware
- Tamper proof fastenings
- Non-removable steel leveling glides
- Ships assembled, 1/carton 15 cu ft

*For fabrics you wish railroaded or repeats larger than 5" x 5", please contact the factory. Yardage requirement will be provided.*

### Options

- Polyurethane arm caps available in Black (B) or Taupe RAL 7006 (T) or Sterling Grey (G)
- For wood arm caps, select from 9 standard stains, or stain-to-match for no extra charge
- KYDEX® end and polyurethane middle arm caps available in Black (B), Taupe RAL 7006 (T), or Sterling Grey (G), add suffix K and \$816 List
- Four white nylon caps can be added to prevent rust in areas with frequent cleaning/mopping. Add \$20 List
- Non-standard laminates, contact Spec for pricing
- Antibacterial and antimicrobial fabrics available
- Floor mounting straps available, add \$52 List per chair
- Connecting and freestanding tables
- CAL 133 fire barrier, add \$457 List for 4613M-LL, \$667 List for 4613M-LU, \$561 List for 4613M-UL, or \$769 List for 4613M-UU
- Elimination of separated seat and back available with either solid or perforated seat pan, call Customer Service

### Three Seater with half arms

COM 5.55 yds

0.75 yd COM per single seat / 1.10 yd COM per single back

MODEL	COM	GR 1	GR 2	GR 3	GR 4	GR 5	GR 6
<b>4613M-LL</b>	<b>4861</b>	<b>5224</b>	<b>5348</b>	<b>5587</b>	<b>5949</b>	<b>6216</b>	<b>6579</b>

*Side panel – laminated, outside and inside*

COM 7.55 yds

0.75 yd COM per single seat / 1.10 yd COM per single back / .5 yd COM per panel

MODEL	COM	GR 1	GR 2	GR 3	GR 4	GR 5	GR 6
<b>4613M-LU</b>	<b>5013</b>	<b>5514</b>	<b>5684</b>	<b>6017</b>	<b>6516</b>	<b>6886</b>	<b>7389</b>

*Side panel – laminated outside, upholstered inside, half arms will be upholstered*

COM 7.55 yds

0.75 yd COM per single seat / 1.10 yd COM per single back / .5 yd COM per panel

MODEL	COM	GR 1	GR 2	GR 3	GR 4	GR 5	GR 6
<b>4613M-UL</b>	<b>5013</b>	<b>5514</b>	<b>5684</b>	<b>6017</b>	<b>6516</b>	<b>6886</b>	<b>7389</b>

*Side panel – upholstered outside, laminated inside, half arms will be laminated*

COM 8.55 yds

0.75 yd COM per single seat / 1.10 yd COM per single back / 1.0 yd COM per panel

MODEL	COM	GR 1	GR 2	GR 3	GR 4	GR 5	GR 6
<b>4613M-UU</b>	<b>5166</b>	<b>5736</b>	<b>5929</b>	<b>6305</b>	<b>6875</b>	<b>7295</b>	<b>7867</b>

*Side panel – upholstered, outside and inside*

Dimensions (inches)

seat H	18.0	seat W	75.0	arm H	26.0
total H	31.75	total W	80.5	depth	30.0



4613M

## DIGNITY2 Behavioral Health Series

### Standard Features

- Tamper proof fastenings

To order full panel side panels, add ZC-LL, or ZC-U to model number, e.g. 4601M-ZC-LL

To order wall-saving side panels, add WS-LL or WS-U to the model number, e.g. 4601M-WS-U

Pricing is for entire chair (2 end side panels).

For fabrics you wish railroaded or repeats larger than 5" x 5", please contact the factory. Yardage requirement will be provided.

### Options

- Floor mounting straps available, add \$ 52 List per chair



### Extended Side Panels

#### Laminate Panels Inside & Outside

MODEL	LIST
ZC-LL	115

#### Laminate & Upholstered Combination Panels

COM 0.5 yd per panel

MODEL	COM	GR 1	GR 2	GR 3	GR 4	GR 5	GR 6
ZC-LU	115	131	135	141	155	165	179
ZC-UL	115	131	135	141	155	165	179

#### Fully Upholstered Panels

COM 1.5 yd per panel

MODEL	COM	GR 1	GR 2	GR 3	GR 4	GR 5	GR 6
ZC-U	115	131	135	141	155	165	179



Side panel extended to floor

### Wall-Saving Side Panels

#### Laminate Panels Inside & Outside

MODEL	LIST
WS-LL	185

#### Laminate & Upholstered Combination Panels

COM 1.0 yd per panel

MODEL	COM	GR 1	GR 2	GR 3	GR 4	GR 5	GR 6
WS-LU	185	365	414	497	646	752	860
WS-UL	185	365	414	497	646	752	860

#### Fully Upholstered Panels

COM 2.0 yd per panel

MODEL	COM	GR 1	GR 2	GR 3	GR 4	GR 5	GR 6
WS-U	185	365	414	497	646	752	860



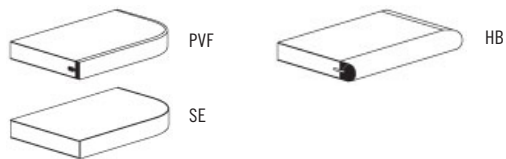
Wall-saving side panels

## DIGNITY2 Behavioral Health Series

### Standard Features

- Tops in laminate or veneer
- Select from 15 standard laminates or choose any standard Wilsonart, Nevamar, Formica, Arborite and Pionite matte finish laminates for no extra charge.
- Laminate tops with PVC Flat (PVF), Self Edge (SE), or hardwood (HB) edge
- 9 standard veneer and hardwood edge stains. Stain-to-match available for no extra charge.
- 18" height
- Non-removable steel leveling glides

*Radius Corner Tables are recommended for open areas*



### Options

- Additional weight can be added, contact factory
- Floor mounting straps available, add \$ 52 List per chair

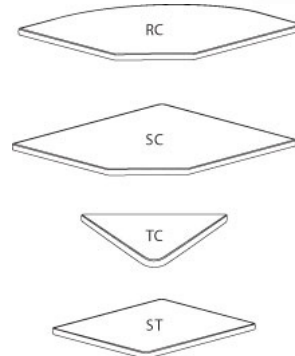
### Freestanding Lounge Tables

Model	Laminate PVF/SE Edge	Laminate HB Edge	Veneer HB Edge	Weight	Cu.Ft.
DIGN2 - 24 x 24 SQ	1593	1850	1897	93	7.2
DIGN2 - 30 x 30 SQ	1796	1981	2047	104	13.5
DIGN2 - 36 x 36 SQ	1962	2252	2332	117	18
DIGN2 - 42 x 42 SQ	2383	2805	2932	133	24.5
DIGN2 - 48 x 48 SQ	2640	3009	3147	150	32
DIGN2 - 24 DIA	1555	2024	2072	90	7.2
DIGN2 - 30 DIA	1753	2211	2277	99	13.5
DIGN2 - 36 DIA	1935	2608	2721	109	18
DIGN2 - 42 DIA	2368	3117	3276	123	24.5
DIGN2 - 48 DIA	2449	3460	3635	137	32

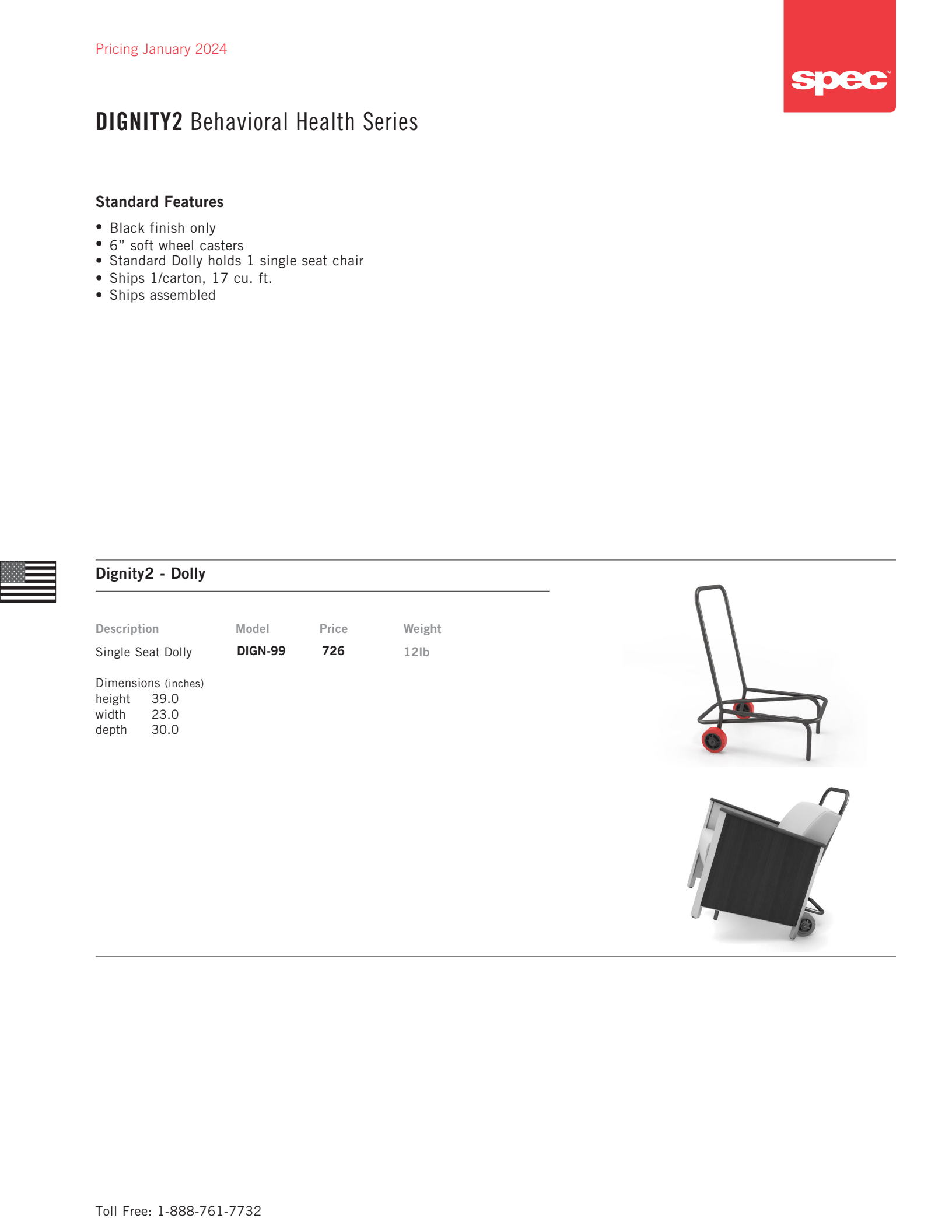


### Corner and Spacer Connecting Tables

Model	Laminate PVF/SE	Laminate HB Edge	Veneer HB Edge	Weight	Cu.Ft.
DIGN2RC - 28 x 28 <i>Radius Corner Table</i>	919	1153	1423	31	2
DIGN2SC - 28 x 28 <i>Square Corner Table</i>	919	1153	1423	32	2
DIGN2TC - 45 degree <i>Corner Table</i>	919	1153	1423	26	2
DIGN2ST - 21 x 24 <i>Spacer Table</i>	708	963	1162	27	2



**Dignity2 seating is available connected as 1, 2 and 3 seaters, with or without arms between, with corner or spacer tables. Above pricing includes connector bars.**



# DIGNITY2 Behavioral Health Series

## Standard Features

- Black finish only
- 6" soft wheel casters
- Standard Dolly holds 1 single seat chair
- Ships 1/carton, 17 cu. ft.
- Ships assembled



## Dignity2 - Dolly

Description	Model	Price	Weight
Single Seat Dolly	DIGN-99	726	12lb
Dimensions (inches)			
height	39.0		
width	23.0		
depth	30.0		

