

## MIDWAY Public Seating

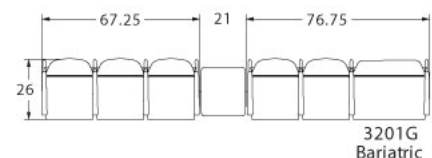
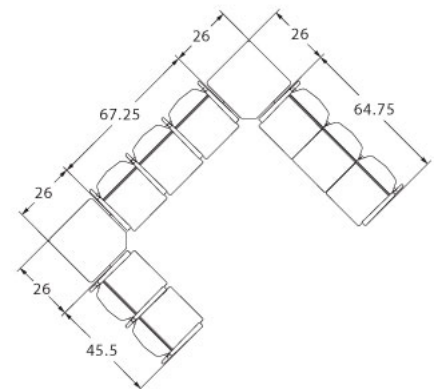
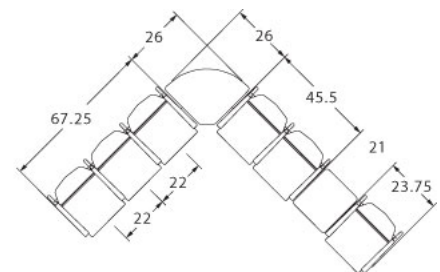
### LAYOUTS



#### Description

- Spec's high durability public seating in a lighter scale allows specifiers to maximize space requirements.
- Your layout possibilities are unlimited with spacer, radius and corner tables – for both standard and bariatric seating in virtually any combination.
- Bariatric seating is a 30" wide seat and is load tested to 750 lbs. Cannot be connected to other bariatric seats.
- 20.5" seat width is standard.
- Choice of polyurethane or wood arms which are replaceable in the field.
- All models offer a choice of no center arms, half arms or full arms to the floor.
- 1.25" diameter wall-saving frame is standard to protect both wall and fabric.
- Separate seat and back provide exceptional comfort and ease of maintenance.
- Please send a drawing of the configuration you require with your order.
- Optional floor mounting glides available.
- For fabrics you wish railroaded or repeats larger than 5" x 5", please contact the factory with repeat information and yardage requirement will be provided.

#### LAYOUTS AND DIMENSIONS



## MIDWAY Public Seating



## PRODUCT CODE

3212U

## Series

32 : Midway

## Arm/Other

0 : Outside Arms

1 : Half Arms

2 : Full Arms

3 : Easy Access Hip Chair

## # Seats

1 : Single Seat

2 : Two-Seat

3 : Three-Seat

## Chair Type

U : Mid Back

H : Highback

G : Bariatric

GH : Highback Bariatric

## OPTIONS

## ARM



Wood



Polyurethane

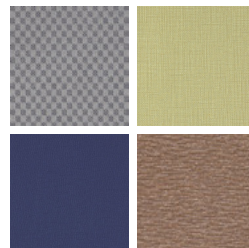
## FINISHES

## FRAME



Select from one of our 76 standard Spectone colors

## FABRIC



Select fabrics from one of our textile partners

## ARMS



Black

Sterling Grey

Taupe

Select from one of our 9 standard wood stains or stain-to-match for no extra charge

See Spectone Card or [specfurniture.com/tools-and-resources/product-resources/finishes](https://specfurniture.com/tools-and-resources/product-resources/finishes) for a complete list of finish options and colors.



MIDWAY Public Seating

HOW TO ORDER



Specify Model

- A Specify Fabric - Seat<sup>1</sup>  
*Manufacturer, Pattern Name, Color*
- B Specify Fabric - Back<sup>1</sup>  
*Manufacturer, Pattern Name, Color*
- C Specify Frame Finish
- D Specify Arm Type and Color

Optional: Flex Back, CAL 133 Fire Barrier, Moisture Barrier, Connecting and Freestanding Tables, Ottoman, Vinyl Headrest Insert

<sup>1</sup> When multiple fabrics are specified on two and three seat chairs, please provide a drawing and legend for fabric placement.

Model	Fabric - Seat	Fabric - Back	Frame Finish	Arm Type and Color
3201U	Momentum, Beeline, Canvas	Momentum, Beeline, Canvas	Silver	Polyurethane, Black

## MIDWAY Public Seating

Single Seater with arms

### Standard Features

- Separate seat and back
- Polyurethane arms or wood arms
- Fully welded 1.25" frame with glides
- Frame in any Spectone color
- VELCRO® removable back covers
- Replaceable seats
- Specify connected layouts at the time of order for no extra charge
- Arms replaceable in the field
- Ships assembled
- Ships 1/carton 17 cu ft

*For fabrics you wish railroaded or repeats larger than 5" x 5", please contact the factory. Yardage requirement will be provided.*

### Options

- Polyurethane arms available in Black, Sterling Grey or Taupe (RAL 7006)
- Wood arms in Natural Maple are available in any of 9 standard stains or stain-to-match for no extra charge
- For Flex back add suffix FB and \$222 List.  
*Note: Wall-saving frame is not available when Flex back is specified.*
- Connecting bracket for on-site modular connections of freestanding chairs, add \$309 List per bracket
- Connected and freestanding tables
- Antibacterial and antimicrobial fabrics available
- Different fabric on seat and back for no extra charge
- CAL 133 fire barrier, add \$156 List per chair



### Single Seater with arms

COM 1.75 yds

0.75 yd COM per single seat

1.0 yd COM per single back

MODEL	COM	GR 1	GR 2	GR 3	GR 4	GR 5	GR 6
<b>3201U</b>	<b>1278</b>	<b>1423</b>	<b>1473</b>	<b>1568</b>	<b>1714</b>	<b>1826</b>	<b>1970</b>

Dimensions (inches)

seat H	18.0	seat W	20.5	arm H	26.0
total H	36.0	total W	23.75	depth	26.0



**3201U**

## MIDWAY Public Seating

Two and Three Seaters with outside arms

### Standard Features

- Separate seat and back
- Polyurethane arms or wood arms
- Fully welded 1.25" frame with glides
- Frame in any Spectone color
- VELCRO® removable back covers
- Replaceable seats
- Specify connected layouts at the time of order for no extra charge
- Arms replaceable in the field
- Ships assembled
- Ships 1/carton 28 cu ft (2 seater),  
1/carton 42 cu ft (3 seater)

### Options

- Polyurethane arms available in Black, Sterling Grey or Taupe (RAL 7006)
- Wood arms in Natural Maple are available in any of 9 standard stains or stain-to-match for no extra charge
- Connecting bracket for on-site modular connections of freestanding chairs, add \$309 List per bracket
- Connected and freestanding tables
- Antibacterial and antimicrobial fabrics available
- Different fabric on seat and back for no extra charge
- CAL 133 fire barrier, add \$312 List per two seater, add \$468 List per three seater

*For fabrics you wish railroaded or repeats larger than 5" x 5", please contact the factory. Yardage requirement will be provided.*



### Two Seater with outside arms

COM 3.5 yds

0.75 yd COM per single seat

1.0 yd COM per single back

MODEL	COM	GR 1	GR 2	GR 3	GR 4	GR 5	GR 6
<b>3202U</b>	<b>2044</b>	<b>2332</b>	<b>2429</b>	<b>2622</b>	<b>2915</b>	<b>3136</b>	<b>3427</b>

Dimensions (inches)

seat H	18.0	seat W	20.5	arm H	26.0
total H	36.0	total W	44.25	depth	26.0



3202U

### Three Seater with outside arms

COM 5.25 yds

0.75 yd COM per single seat

1.0 yd COM per single back

MODEL	COM	GR 1	GR 2	GR 3	GR 4	GR 5	GR 6
<b>3203U</b>	<b>2730</b>	<b>3167</b>	<b>3312</b>	<b>3603</b>	<b>4038</b>	<b>4370</b>	<b>4807</b>

Dimensions (inches)

seat H	18.0	seat W	20.5	arm H	26.0
total H	36.0	total W	64.75	depth	26.0



3203U

## MIDWAY Public Seating

Two and Three Seaters with half arms

### Standard Features

- Separate seat and back
- Polyurethane arms or wood arms
- Fully welded 1.25" frame with glides
- Frame in any Spectone color
- VELCRO® removable back covers
- Replaceable seats
- Specify connected layouts at the time of order for no extra charge
- Arms replaceable in the field
- Ships assembled
- Ships 1/carton 28 cu ft (2 seater),  
1/carton 42 cu ft (3 seater)

### Options

- Polyurethane arms available in Black, Sterling Grey or Taupe (RAL 7006)
- Wood arms in Natural Maple are available in any of 9 standard stains or stain-to-match for no extra charge
- Connecting bracket for on-site modular connections of freestanding chairs, add \$309 List per bracket
- Connected and freestanding tables
- Antibacterial and antimicrobial fabrics available
- Different fabric on seat and back for no extra charge
- CAL 133 fire barrier, add \$312 List per two seater, add \$468 List per three seater

*For fabrics you wish railroaded or repeats larger than 5" x 5", please contact the factory. Yardage requirement will be provided.*



### Two Seater with half arms

COM 3.5 yds

0.75 yd COM per single seat

1.0 yd COM per single back

MODEL	COM	GR 1	GR 2	GR 3	GR 4	GR 5	GR 6
<b>3212U</b>	<b>2293</b>	<b>2583</b>	<b>2680</b>	<b>2878</b>	<b>3167</b>	<b>3391</b>	<b>3679</b>

Dimensions (inches)

seat H	18.0	seat W	20.5	arm H	26.0
total H	36.0	total W	45.5	depth	26.0



3212U

### Three Seater with half arms

COM 5.25 yds

0.75 yd COM per single seat

1.0 yd COM per single back

MODEL	COM	GR 1	GR 2	GR 3	GR 4	GR 5	GR 6
<b>3213U</b>	<b>3187</b>	<b>3624</b>	<b>3771</b>	<b>4059</b>	<b>4500</b>	<b>4829</b>	<b>5262</b>

Dimensions (inches)

seat H	18.0	seat W	20.5	arm H	26.0
total H	36.0	total W	67.25	depth	26.0



3213U

## MIDWAY Public Seating

Two and Three Seaters with full arms

### Standard Features

- Separate seat and back
- Polyurethane arms or wood arms
- Fully welded 1.25" frame with glides
- Frame in any Spectone color
- VELCRO® removable back covers
- Replaceable seats
- Specify connected layouts at the time of order for no extra charge
- Arms replaceable in the field
- Ships assembled
- Ships 1/carton 28 cu ft (2 seater),  
1/carton 42 cu ft (3 seater)

### Options

- Polyurethane arms available in Black, Sterling Grey or Taupe (RAL 7006)
- Wood arms in Natural Maple are available in any of 9 standard stains or stain-to-match for no extra charge
- Connecting bracket for on-site modular connections of freestanding chairs, add \$309 List per bracket
- Connected and freestanding tables
- Antibacterial and antimicrobial fabrics available
- Different fabric on seat and back for no extra charge
- CAL 133 fire barrier, add \$312 List per two seater, add \$468 List per three seater

*For fabrics you wish railroaded or repeats larger than 5" x 5", please contact the factory. Yardage requirement will be provided.*



### Two Seater with full arms

COM 3.5 yds  
0.75 yd COM per single seat  
1.0 yd COM per single back

MODEL	COM	GR 1	GR 2	GR 3	GR 4	GR 5	GR 6
<b>3222U</b>	<b>2366</b>	<b>2656</b>	<b>2753</b>	<b>2949</b>	<b>3242</b>	<b>3463</b>	<b>3755</b>

Dimensions (inches)

seat H	18.0	seat W	20.5	arm H	26.0
total H	36.0	total W	45.5	depth	26.0



3222U

### Three Seater with full arms

COM 5.25 yds  
0.75 yd COM per single seat  
1.0 yd COM per single back

MODEL	COM	GR 1	GR 2	GR 3	GR 4	GR 5	GR 6
<b>3223U</b>	<b>3343</b>	<b>3778</b>	<b>3923</b>	<b>4215</b>	<b>4649</b>	<b>4983</b>	<b>5421</b>

Dimensions (inches)

seat H	18.0	seat W	20.5	arm H	26.0
total H	36.0	total W	67.25	depth	26.0



3223U

## MIDWAY Public Seating

### Bariatric Single Seater with arms

#### Standard Features

- Separate seat and back
- Polyurethane arms or wood arms
- Fully welded 1.25" frame with glides
- Frame in any Spectone color
- VELCRO® removable back covers
- Replaceable seats
- Specify connected layouts at the time of order for no extra charge
- Arms replaceable in the field
- Bariatric seating cannot connect to bariatric seating
- Ships assembled
- Baratric ships 1/carton 22 cu ft

*For fabrics you wish railroaded or repeats larger than 5" x 5", please contact the factory. Yardage requirement will be provided.*

#### Options

- Polyurethane arms available in Black, Sterling Grey or Taupe (RAL 7006)
- Wood arms in Natural Maple are available in any of 9 standard stains or stain-to-match for no extra charge
- Connecting bracket for on-site modular connections of freestanding chairs, add \$309 List per bracket
- Connected and freestanding tables
- Antibacterial and antimicrobial fabrics available
- Different fabric on seat and back for no extra charge
- CAL 133 fire barrier, add \$227 List per chair

### Bariatric Single Seater with arms

COM 2.55 yds

0.8 yd COM per single seat

1.75 yd COM per single back

MODEL	COM	GR 1	GR 2	GR 3	GR 4	GR 5	GR 6
<b>3201G</b>	<b>1556</b>	<b>1757</b>	<b>1826</b>	<b>1956</b>	<b>2158</b>	<b>2310</b>	<b>2513</b>

#### Dimensions (inches)

seat H	18.0	seat W	30.0	arm H	26.0
total H	36.0	total W	32.75	depth	26.0



**3201G**



## MIDWAY Public Seating

Highback Single Seater with arms  
Ottoman

### Standard Features

- Separate seat and back
- Polyurethane arms or wood arms
- Fully welded 1.25" frame with glides
- Frame in any Spectone color
- VELCRO® removable back covers
- Replaceable seats
- Specify connected layouts at the time of order for no extra charge
- Arms replaceable in the field
- Ships assembled
- Ships 1/carton 19 cu ft
- Ottoman ships 1/carton 5 cu ft

*For fabrics you wish railroaded or repeats larger than 5" x 5", please contact the factory. Yardage requirement will be provided.*

### Options

- Polyurethane arms available in Black, Sterling Grey or Taupe (RAL 7006)
- Wood arms in Natural Maple are available in any of 9 standard stains or stain-to-match for no extra charge
- For Flex back add suffix FB and \$222 List.  
*Note: Wall-saving frame is not available when Flex back is specified.*
- Vinyl insert on top of the back, add \$55 List/seat back
- Connecting bracket for on-site modular connections of freestanding chairs, add \$309 List per bracket
- Connected and freestanding tables
- Antibacterial and antimicrobial fabrics available
- Different fabric on seat and back for no extra charge
- CAL 133 fire barrier, add \$196 List per chair, \$56 List per ottoman



### Highback Single Seater with arms

COM 1.85 yds  
0.75 yd COM per single seat  
1.1 yds COM per single back

MODEL	COM	GR 1	GR 2	GR 3	GR 4	GR 5	GR 6
<b>3201H</b>	<b>1433</b>	<b>1573</b>	<b>1618</b>	<b>1710</b>	<b>1850</b>	<b>1953</b>	<b>2133</b>

Dimensions (inches)

seat H	18.0	seat W	20.5	arm H	26.0
total H	46.0	total W	23.75	depth	25.0



3201H

### Ottoman

0.5 yd COM per ottoman

MODEL	COM	GR 1	GR 2	GR 3	GR 4	GR 5	GR 6
<b>3230F</b>	<b>513</b>	<b>558</b>	<b>575</b>	<b>604</b>	<b>651</b>	<b>687</b>	<b>747</b>

Ottoman Dimensions (inches)

H	11.5	W	19.25	depth	12.25
---	------	---	-------	-------	-------



3230F

## MIDWAY Public Seating

### Highback Bariatric Single Seater with arms

#### Standard Features

- Separate seat and back
- Polyurethane arms or wood arms
- Fully welded 1.25" frame with glides
- Frame in any Spectone color
- VELCRO® removable back covers
- Replaceable seats
- Specify connected layouts at the time of order for no extra charge
- Arms replaceable in the field
- Bariatric seating cannot connect to bariatric seating
- Ships assembled
- Baratric Highback ships 1/carton 26 cu ft

#### Options

- Polyurethane arms available in Black, Sterling Grey or Taupe (RAL 7006)
- Wood arms in Natural Maple are available in any of 9 standard stains or stain-to-match for no extra charge
- Connecting bracket for on-site modular connections of freestanding chairs, add \$309 List per bracket
- Connected and freestanding tables
- Antibacterial and antimicrobial fabrics available
- Different fabric on seat and back for no extra charge
- CAL 133 fire barrier, add \$282 List per chair

*For fabrics you wish railroded or repeats larger than 5" x 5", please contact the factory. Yardage requirement will be provided.*



### Highback Bariatric Single Seater with arms

COM 3.0 yds

0.8 yd COM per single seat

2.2 yds COM per single back

MODEL	COM	GR 1	GR 2	GR 3	GR 4	GR 5	GR 6
<b>3201GH</b>	<b>1711</b>	<b>1943</b>	<b>2021</b>	<b>2172</b>	<b>2406</b>	<b>2583</b>	<b>2866</b>

#### Dimensions (inches)

seat H	18.0	seat W	30.0	arm H	26.0
total H	46.0	total W	32.75	depth	26.0



**3201GH**

## MIDWAY Public Seating

Easy Access Hip Single Seater with arms

### Standard Features

- Separate seat and back
- Polyurethane arms or wood arms
- Fully welded 1.25" frame with glides
- Frame in any Spectone color
- 24" seat height, no seat pitch (level)
- Footrest which assists entering/exiting chair
- VELCRO® removable back covers
- Replaceable seats
- Arms replaceable in the field
- Ships assembled
- Ships 1/carton 19 cu ft

### Options

- Polyurethane arms available in Black, Sterling Grey or Taupe (RAL 7006)
- Wood arms in Natural Maple are available in any of 9 standard stains or stain-to-match for no extra charge
- Antibacterial and antimicrobial fabrics available
- Different fabric on seat and back for no extra charge
- CAL 133 fire barrier, add \$156 List per chair

*For fabrics you wish railroaded or repeats larger than 5" x 5", please contact the factory. Yardage requirement will be provided.*



### Easy Access Hip Single Seater with arms

COM 1.75 yds  
0.75 yd COM per single seat  
1.0 yd COM per single back

MODEL	COM	GR 1	GR 2	GR 3	GR 4	GR 5	GR 6
<b>3231</b>	<b>1418</b>	<b>1567</b>	<b>1616</b>	<b>1708</b>	<b>1857</b>	<b>1966</b>	<b>2112</b>

#### Dimensions (inches)

seat H	24.0	seat W	20.5	arm H	32.0
total H	42.0	total W	23.75	depth	26.0



**3231**

## MIDWAY Public Seating

### Freestanding Lounge Tables

### Corner and Spacer Connecting Tables

#### Standard Features

- Tops in laminate or veneer
- Select laminate tops from 15 standard laminates or choose any standard Wilsonart, Nevamar, Formica, Arborite and Pionite matte finish laminates for no extra charge.
- Freestanding lounge tables available with PVC Flat (PVF), 2mm (2MM), exposed Baltic Birch plywood (PF, PKNR) or hardwood (HB) edge
- Connecting table tops available with PVC Flat (PVF) edge, Self edge (SE) or hardwood (HB) edge
- 9 standard veneer and hardwood edge stains. Stain-to-match available for no extra charge.
- Frame in any Spectone color
- Glides
- 18" height

#### Options

- Custom size spacer tables for restricted spaces
- Other sizes may be available

*Radius Corner Tables are recommended for open areas*

#### Freestanding Lounge Tables

Model	Laminate PVF/SE/2MM	Laminate PF/PKNR/HB	Veneer HB	Weight	Cu.Ft.
32 - 24 x 24 SQ	<b>880</b>	<b>1132</b>	<b>1333</b>	28	7.2
32 - 24 x 48 RE	<b>1088</b>	<b>1367</b>	<b>1647</b>	48	18
32 - 30 x 30 SQ	<b>1019</b>	<b>1202</b>	<b>1414</b>	43	13.5
32 - 24 DIA	<b>842</b>	<b>1307</b>	<b>1571</b>	26	7.2
32 - 30 DIA	<b>976</b>	<b>1433</b>	<b>1706</b>	40	13.5



#### Corner and Spacer Connecting Tables

Model	Laminate PVF/SE	Weight	Cu.Ft.
32RC - 26 x 26 <i>Radius Corner Table</i>	<b>919</b>	26	2
32SC - 26 x 26 <i>Square Corner Table</i>	<b>919</b>	26	2
32TC45 - 19 x 23 <i>45 degree Corner Table</i>	<b>919</b>	19	2
32ST - 19 x 21 <i>Spacer or End Table</i>	<b>708</b>	19	2

