



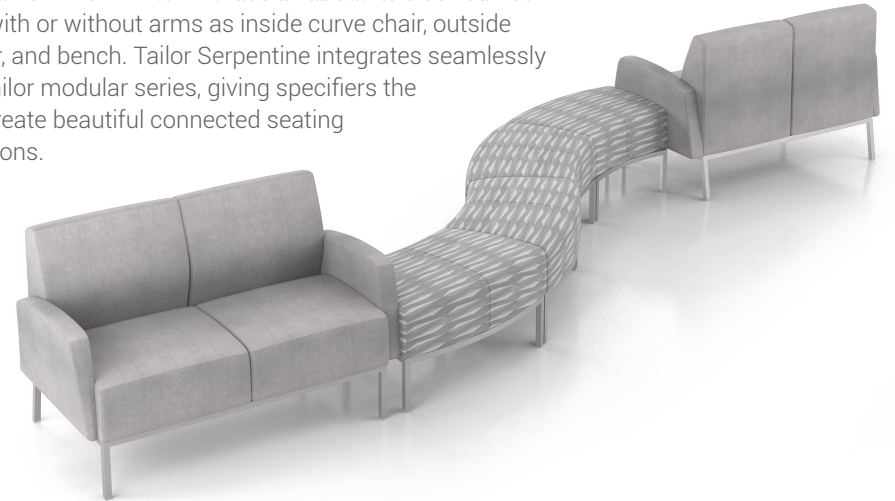
spec[™]

WHAT'S NEW 2020

Tailor Serpentine

Go with the Flow

Tailor has a new friend in town that's all about its sleek curves! Available with or without arms as inside curve chair, outside curve chair, and bench. Tailor Serpentine integrates seamlessly with the Tailor modular series, giving specifiers the ability to create beautiful connected seating configurations.





With a limitless selection of textiles and 76 Spectone frame finishes, Tailor Serpentine can look formal for corporate environments or casual for collaborative spaces. Tailor was designed for healthcare first so you know it is built to last and easy to clean.



Parkdale

New Design, New Possibilities

Add a little flare to collaborative office spaces with the Parkdale table. An optional split top gives specifiers the option to add clamp-on power modules and to channel wires to keep the workspace tidy. The design allows for seats on all sides of the table, while a variety of top sizes and base heights means that there is a Parkdale for everyone.





Hardi Club Chair

Lounging as We Know It

The latest addition to the award-winning Hardi Series comes in the form of a roto-molded club-style lounge chair. The club chair's design aims to limit ligature exposures even further. Like other designs in the Hardi Series, the club chair is available in six nature-inspired color tones—and it can be ganged together or fastened to the floor.



Hardi Children's Chair

Smaller Scale, Robust Design

The Hardi children's chair, winner of a Silver Nightingale Award for Patient Seating, is designed for behavioral health applications where the safety of young patients and their caregivers is of the utmost importance. Its one-piece, roto-molded polyethylene construction is easy to clean and extremely robust, while its softly rounded lines make the Hardi children's chair approachable and well suited for family areas.

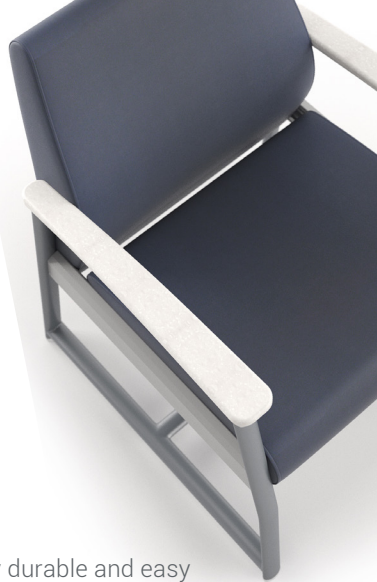


Tailor HD and Calvin Product Updates

Tailor HD can now be specified with an optional insert that completely closes the gap under the seat to limit ligature concerns. Available on both standard and bariatric models, the roto-molded inserts attach to the frame of the chair and form a tight fit.



Highly durable and easy to clean, solid surface arm caps are now available in our collection of Calvin seating.



Comfort Matters Softer Seating Solution

We know how important a comfortable seat is, so we've upgraded Tailor's seat build to make sure users get the best possible experience.

spec[™]

Tel: 416 246 5550

Fax: 416 246 5549

Toll Free: 1 888 761 7732

specit@specfurniture.com

specfurniture.com

Spec Furniture® is a registered trademark of Spec Furniture Inc. Spec™ is proud of the contribution of our design team and our employees. Product Designers: Tailor Serpentine by Achella Design; Tailor HD Insert by Christopher Benjamin; Parkdale by Stefan Robertson.

