

Cosmopolitan GR3

Lavish GR3

Reveal GR4



COSMOPOLITAN

LAVISH

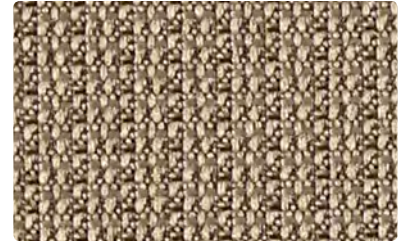
REVEAL



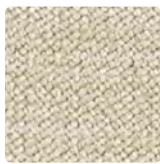
WC968-017
Oatmeal



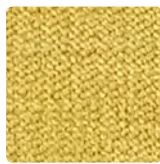
WC969-010
Pecan



WC966-010
Chestnut



WC968-007
Ecrú



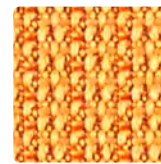
WC968-002
Marigold



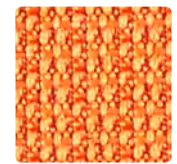
WC969-002
Sunflower



WC969-009
Ember



WC966-019
Saffron



WC966-009
Bittersweet



WC968-019
Saffron



WC968-009
Tangerine



WC969-001
Crimson



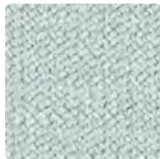
WC969-005
Wildberry



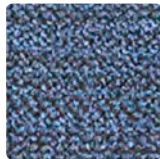
WC966-001
Blaze



WC966-011
Raspberry



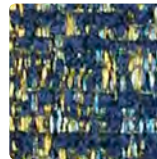
WC968-014
Horizon



WC968-004
Denim



WC969-014
Turquoise



WC969-004
Lagoon



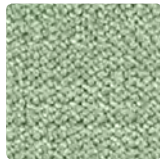
WC966-014
Aqua



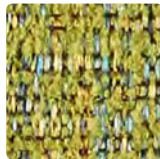
WC966-004
Denim



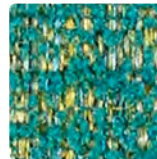
WC968-012
Lemongrass



WC968-003
Opal



WC969-003
Avocado



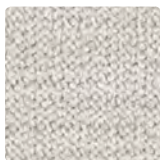
WC969-013
Peacock



WC966-013
Limelight



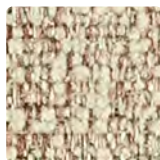
WC966-003
Evergreen



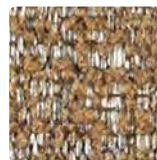
WC968-016
Mist



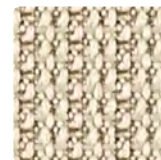
WC968-010
Granite



WC969-007
Ecrú



WC969-000
Mocha



WC966-007
Taupe



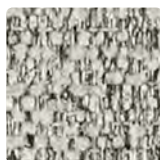
WC966-000
Espresso



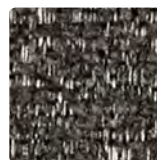
WC968-006
Shadow



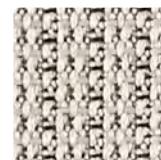
WC968-000
Shiitake



WC969-026
Cloud



WC969-006
Graphite



WC966-026
Zinc



WC966-006
Charcoal

Additional colors are available. Please refer to the Mayer Fabrics website.

TECHNICAL INFORMATION

Crypton Coordinates

Pattern 54"	Content and Backing	Certifications	Weight/ Linear Yd.	Pattern Repeat	Finish	Abrasion Wyzenbeek	Light- Fastness	Flammability	Cleaning Code
COSMOPOLITAN <i>Directional</i>	88% Polyester, 12% Nylon Backing: Crypton®	GREENGUARD Gold	19.28 oz.	None	Crypton® with Antimicrobial Silver Ion Technology	100,000 Double Rubs	40 hours	Cal. 117-2013 NFPA 260/UFAC Class 1	C, BC
LAVISH <i>Directional</i>	100% Polyester Backing: Crypton®	GREENGUARD Gold	22.98 oz.	None	Crypton® with Antimicrobial Silver Ion Technology	79,000 Double Rubs	40 hours	Cal. 117-2013 NFPA 260/UFAC Class 1	C, BC
REVEAL <i>Directional</i>	100% Polyester Backing: Crypton®	GREENGUARD Gold	15.05 oz.	0.25" H, 0.125" V	Crypton® with Antimicrobial Silver Ion Technology	100,000 Double Rubs	40 hours	Cal. 117-2013 NFPA 260/UFAC Class 1	C, BC

May comply with California Technical Bulletin 133 when combined with appropriate components.

REDUCED ENVIRONMENTAL IMPACT

These products are GREENGUARD Gold Certified for low chemical and particle emissions to UL standard UL 2818 and may contribute to LEED certification. For complete information visit mayerfabrics.com and UL.com/gg.

CLEANING INFORMATION

C: Crypton® Cleaning

BC: Bleach Cleanable – 1 part bleach, 9 parts water = 10% bleach, 90% water solution. Do not clean/disinfect fabric for longer than 10 minutes using the 10% bleach solution. Always rinse promptly with clean water after applying the bleach solution. Failure to do so will void any and all warranties.

ADDITIONAL INFORMATION

Custom Capabilities: All patterns can be custom colored. Minimum yardage applies.

Digital Swatch Card Color Matching: Due to color variations on different monitors and color printers, actual swatch colors may vary slightly. Please request a memo sample from Mayer Fabrics to ensure proper color representation.

Specifications: Specifications are correct at the time of printing. Additional specifications are available on our website.



These fabrics meet or exceed these ACT performance guidelines. *Certification Marks owned by ACT*



Spec Furniture Inc.
TOLL FREE: 888.761.7732 TEL: 416.246.5550 FAX: 416.246.5549
Email: specit@specfurniture.com
www.specfurniture.com

T 317.267.2626 or 800.428.4415 F 317.267.2629 or 877.7SAMPLE
www.mayerfabrics.com
©2017 Mayer-Paetz, Inc.



SFCCCD
50217