

|             |     |
|-------------|-----|
| Acoustic    | GR4 |
| Ascend      | GR4 |
| Beeline EPU | GR2 |
| Canter EPU  | GR1 |
| Cover Cloth | GR3 |
| Eon EPU     | GR3 |
| Faux Felt   | GR3 |
| Groove EPU  | GR3 |
| Kindred     | GR4 |
| Row         | GR3 |
| Synergy     | GR3 |
| Velocity    | GR3 |

**PVC Free and Crypton**  
From Momentum Textiles



**SYNERGY** Barley



Agean



Tango



Meadow



Denim



**GROOVE** Calm



Polar



Stone



Khaki



Demure



Beach



Harbor



Zest



Glacier



Ember



Surplus



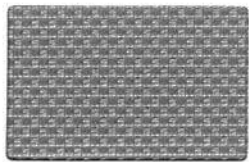
Guide



Expanse



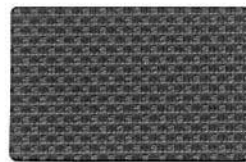
**EON** Arena



Coquette



Path



Mineral



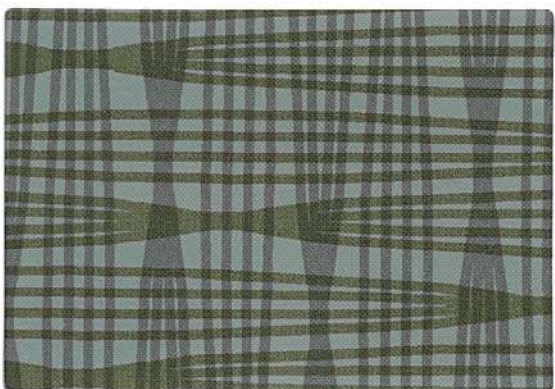
Anew



Cove



Mystery



**ACOUSTIC** Dolomite



Wisp



Pumice



Fresh



Anise





Cover Cloth Sorrel



Oat



Savor



Cyan



Platinum



Vesper



Electric



Shire



Heirloom



Taupe



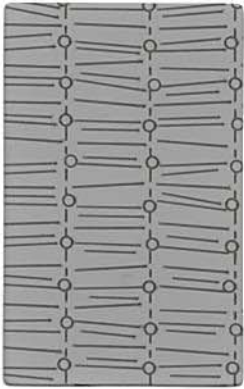
Indigo



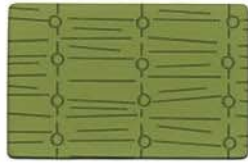
Coffee



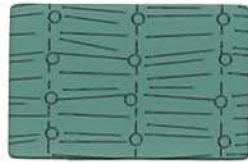
Graphite



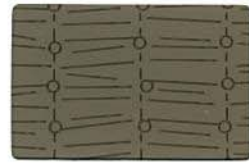
Velocity Steel



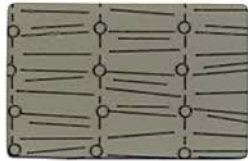
Olive



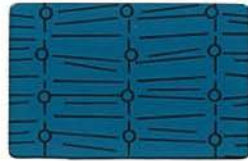
Pond



Malt



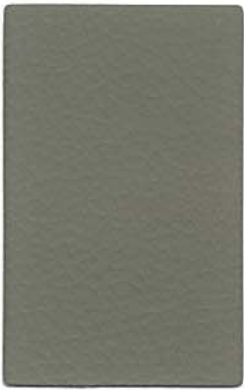
Sycamore



Azure



Charcoal



Canter Quarry



Toasty



Kiwi Green



Nimbus



Verdite



Earth



Iron



Saddle



Safari



Ballad



Night



Sable



Onyx



Row Oasis



Marigold



Leaf



Sage



Stone

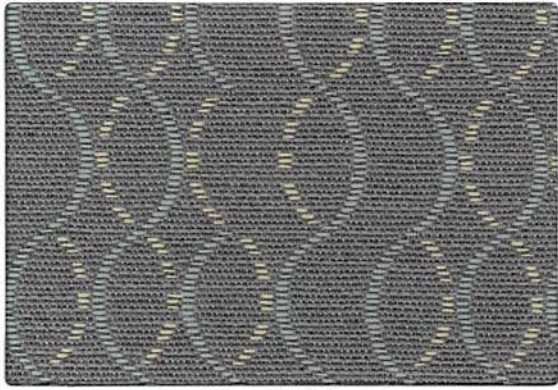


Fjord



Blaze





Ascend Calm



Flannel



Harvest



Evening



Bark



Beeline Sprout



Sisal



Eucalyptus



Geyser



Nimbus



Fossil



Forge



Oat



Cork



Tidal



Portobello



Walnut



Eclipse



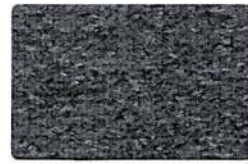
Faux Felt Stone



Pebble



Camel



Quail



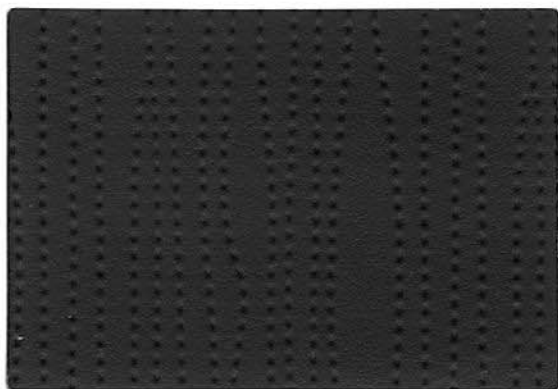
Sprout



Pool



Charcoal



Kindred Flint



Smoke



Orangery



Chai



Stream



# Technical Information

WOVEN CRYPTON®



CRYPTON®  
Super Fabrics

Cleaning Code: W and WS

A.C.T.:

Polyurethane  
PVC Free

| Width - Pattern | Content  | Abrasion     | Light Fastness        | Approximate Repeats   | Notes  |
|-----------------|--|--------------|-----------------------|-----------------------|--|
| 56" ASCEND      | 61% Repreve® Post Consumer Recycled Polyester<br>39% Polyester | 200,000 D.R. | 40 Hrs.<br>Class 4    | 6" L<br>1.875" W      | A Directional Pattern<br>Diluted Bleach<br>Cleanable (10:1)                    |
| 59" COVER CLOTH | 56% Repreve® Post Consumer Recycled Polyester<br>44% Polyester | 200,000 D.R. | 40 Hrs.<br>Class 4    |                       | Diluted Bleach<br>Cleanable (10:1)   |
| 56" FAUX FELT   | 62% Repreve® Post Consumer Recycled Polyester<br>38% Polyester | 75,000 D.R.  | 40 Hrs.<br>Class 4.5  |                       | Diluted Bleach<br>Cleanable (10:1)   |
| 53" SYNERGY     | 71% Post Consumer Recycled Polyester<br>29% Polyester          | 165,000 D.R. | 40 Hrs.<br>Class 4    |                       | Diluted Bleach<br>Cleanable (10:1)   |
| 54" ACOUSTIC    | 100% Polyurethane / PVC Free                                   | 100,000 D.R. | 200 Hrs.<br>Class 5   | 5" L<br>5" W          | Diluted Bleach<br>Cleanable (4:1)  |
| 54" BEELINE     | 100% Polyurethane / PVC Free                                   | 500,000 D.R. | 200 Hrs.<br>Class 4.5 |                       | Diluted Bleach<br>Cleanable (4:1)  |
| 54" CANTER      | 100% Polyurethane / PVC Free                                   | 240,000 D.R. | 200 Hrs.<br>Class 4.5 |                       | Diluted Bleach<br>Cleanable (4:1)  |
| 54" EON         | 100% Polyurethane / PVC Free                                   | 500,000 D.R. | 200 Hrs.<br>Class 4.5 | .625" L<br>.625" W    | Diluted Bleach<br>Cleanable (4:1)  |
| 54" GROOVE      | 54% Polyester<br>46% Polyurethane / PVC Free                   | 500,000 D.R. | 200 Hrs.<br>Class 3.5 | 22.44" L<br>14.875" W | A Directional Pattern<br>Diluted Bleach<br>Cleanable (4:1)                     |
| 54" KINDRED     | 100% Polyurethane / PVC Free                                   | 210,000 D.R. | 200 Hrs.<br>Class 4.5 | 8.25" L<br>2" W       | A Directional Pattern<br>Diluted Bleach<br>Cleanable (4:1)                     |
| 54" ROW         | 100% Polyurethane / PVC Free                                   | 500,000 D.R. | 200 Hrs.<br>Class 4.5 |                       | Shown Railroaded<br>Diluted Bleach<br>Cleanable (4:1)                          |
| 54" VELOCITY    | 100% Polyurethane / PVC Free                                   | 500,000 D.R. | 200 Hrs.<br>Class 4   | 6.5" L<br>6.25" W     | Shown Railroaded<br>A Directional Pattern<br>Diluted Bleach<br>Cleanable (4:1) |

Cleaning Code:W

A.C.T.:

- All patterns are Virox and Bleach Cleanable
- All patterns pass CAL133 when the proper barrier is added

## EXPLANATION OF ACT ICONS UPHOLSTERY

### Fire Retardancy

Flammability testing determined as fabric's resistance to burning.

PASSES  
California 117-2013

### Colorfastness to Wet & Dry Crocking

Colorfastness to wet & dry crocking refers to the rubbing of color from the fabric onto clothing, hands or other material and can occur under wet or dry conditions.

PASSES  
• AATCC 8-1974 Dry Crocking, Class 4 minimum; Wet Crocking, Class 3 minimum.

### Colorfastness to Light

Colorfastness to light is the degree to which the fabric will retain its color when exposed to light.

PASSES  
AATCC 16A-1974 or AATCC 16E-1976; Class 4 minimum at 40 hours.  
NOTE: Class 4 minimum at 60 hours is recommended for direct sunlight exposure situations.

### Physical Properties

3 physical property tests include: brush pill test to determine a fabric's pilling. Breaking/tensile strength is the ability of a fabric to withstand tension without breaking or tearing. Seam slippage is the pulling apart of the fabrics at the seams.

PASSES  
Brush Pill ASTM D3511, 3-4 minimum.  
Breaking Strength ASTM D3597-D1682-64 (1975) 50 lbs. minimum in warp & weft.  
Seam Slippage ASTM D3597-D434-75 25 lbs. minimum in warp & weft.

### Abrasion

Abrasion is the ability of a fabric to withstand damage from wear and rubbing. There is a general contract specification as well as a heavy duty specification.

PASSES  
General Contract ASTM 3597 modified (#10 cotton duck);  
15,000 double rubs Wyzenbeek Method.

Heavy Duty ASTM 3597 modified (#10 cotton duck); 30,000 double rubs Wyzenbeek Method or ASTM D4966 (with 21 oz. weight);  
40,000 rubs Martindale Method.

### Cleaning Code Definition

W: Water-based foam or cleaner.  
WS: Water-based cleaning agents or foam.

# spec

SPEC FURNITURE INC.  
165 City View Drive,  
Toronto, Ontario Canada M9W 5B1

Tel: 416 246 5550 Fax: 416 246 5549  
Toll Free: 1 888 761 7732  
specit@specfurniture.com  
www.specfurniture.com