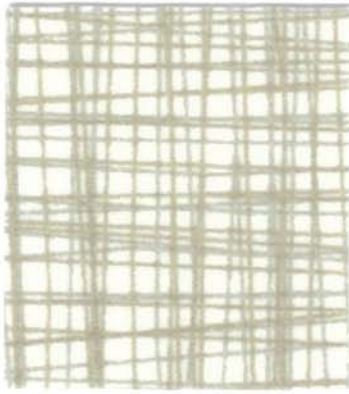


Silica	GR4
Silica Chopsticks	GR5
Silica Compass	GR5
Silica Cusp	GR5
Silica Deflect	GR5
Silica Etch	GR4
Silica Fiona	GR5
Silica Hiatus	GR5
Silica Kip	GR5
Silica Leather	GR4
Silica Stride	GR5
Silica Tech	GR4
Silica Triad	GR4

## Silica Solids and Prints

From Momentum Textiles



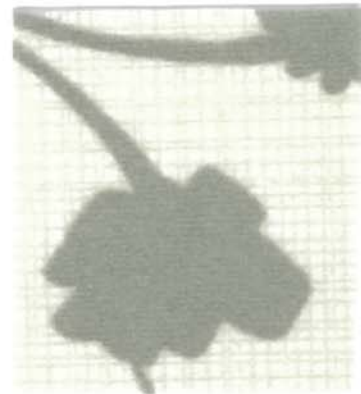
**SILICA STRIDE**  
Ecrú



**SILICA**  
Cumulus



**SILICA TRIAD**  
Stark



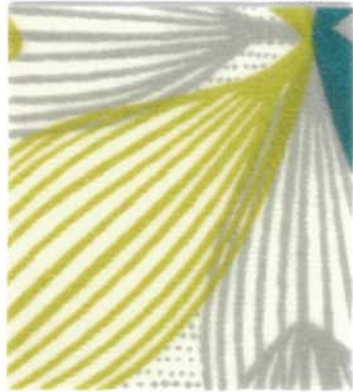
**SILICA HIATUS**  
Carrara



**SILICA TRIAD**  
Ivory



**SILICA LEATHER**  
Barley



**SILICA FIONA**  
Crisp



**SILICA TRIAD**  
Brut



**SILICA**  
Burnished



**SILICA TRIAD**  
Julep



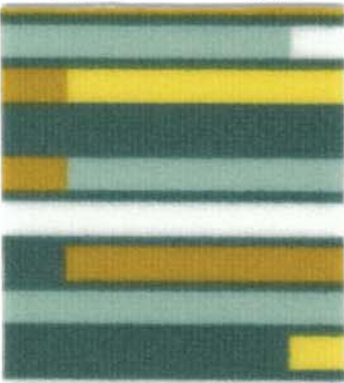
**SILICA TRIAD**  
Bronze



**SILICA ETCH**  
Juniper



**SILICA LEATHER**  
Dove



**SILICA CHOPSTICKS**  
Cassia



**SILICA ETCH**  
Rain



**SILICA TECH**  
Fog



**SILICA CUSP**  
Spa



**SILICA**  
Tropic



**SILICA ETCH**  
Doe



**SILICA HIATUS**  
Stone



**SILICA ETCH**  
Flint



**SILICA TECH**  
Ash



**SILICA TRIAD**  
Everglade



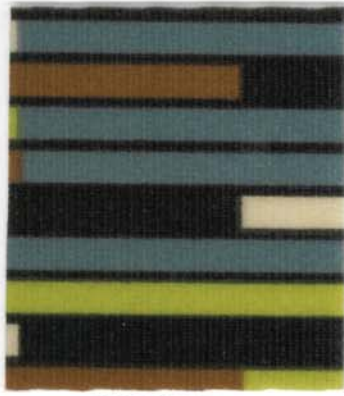
**SILICA**  
Brownstone



**SILICA LEATHER**  
Earthen



**SILICA TRIAD**  
Settle



**SILICA CHOPSTICKS**  
Elm



**SILICA TRIAD**  
Luster



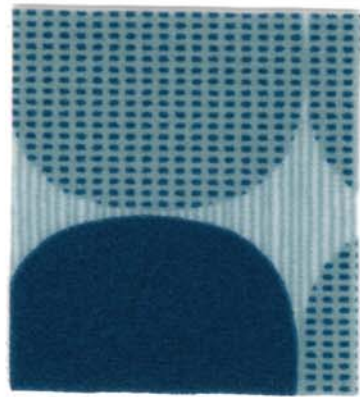
**SILICA TRIAD**  
Zing



**SILICA TECH**  
Limelight



**SILICA TECH**  
Calm



**SILICA COMPASS**  
Fresh



**SILICA**  
Appletini



**SILICA**  
Haze



**SILICA TRIAD**  
Crest



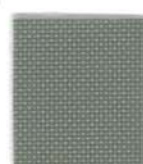
**SILICA TECH**  
Mineralize



**SILICA FIONA**  
Bay



**SILICA TRIAD**  
Remote



**SILICA TECH**  
Verdigris



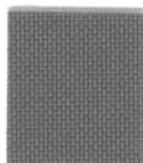
**SILICA**  
Breakwater



**SILICA TRIAD**  
Lazuli



**SILICA DEFLECT**  
Spruce



**SILICA TECH**  
Gleam



**SILICA TRIAD**  
Heron



**SILICA CUSP**  
Pier



**SILICA TRIAD**  
Mood



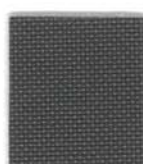
**SILICA**  
Bright Night



**SILICA TECH**  
Urbanite



**SILICA**  
Gallant



**SILICA TECH**  
Kohl



**SILICA TRIAD**  
Suit



**SILICA ETCH**  
Ink



**SILICA TRIAD**  
Sonar



**SILICA KIP**  
Galena



**SILICA TRIAD**  
Char



**SILICA LEATHER**  
Ink



**SILICA CHOPSTICKS**  
Myrrh



**SILICA ETCH**  
Wetstone



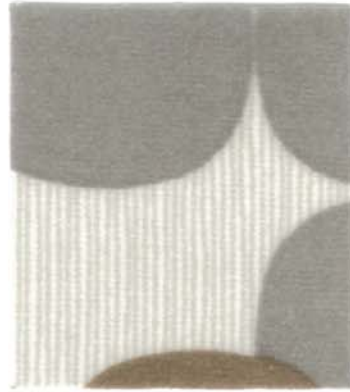
**SILICA**  
Marigold



**SILICA**  
Quartz



**SILICA ETCH**  
Manta



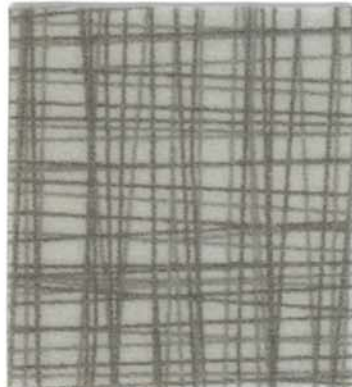
**SILICA COMPASS**  
Quarry



**SILICA ETCH**  
Nickel



**SILICA TRIAD**  
Smoke



**SILICA STRIDE**  
Limestone



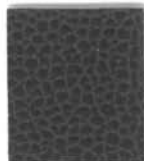
**SILICA**  
Sketch



**SILICA LEATHER**  
Mink



**SILICA TRIAD**  
Heat



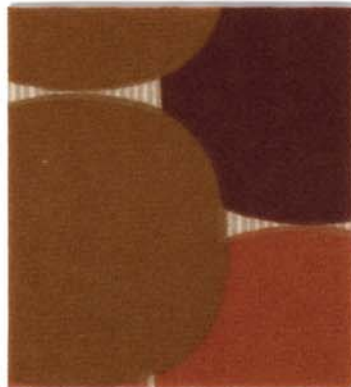
**SILICA LEATHER**  
Shadow



**SILICA LEATHER**  
Umber



**SILICA**  
Cloak



**SILICA COMPASS**  
Oxide



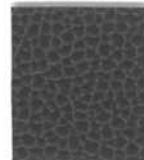
**SILICA TECH**  
Sablewood



**SILICA**  
Terra



**SILICA KIP**  
Root



**SILICA LEATHER**  
Pewter



**SILICA TRIAD**  
Brew



**SILICA ETCH**  
Slate



**SILICA**  
Eclipse



**SILICA DEFLECT**  
Gull



**SILICA TRIAD**  
Orchid



**SILICA**  
Petunia



**SILICA**  
Alloy



**SILICA LEATHER**  
Eclipse



**SILICA TRIAD**  
Regal



**SILICA**  
Nero

Cleaning

- All pat  
- All pat

EXPL

Fire R  
Flamm



Colorf  
Colorf  
onto cl



Colorf  
Colorfa  
exposed



Physic  
3 physic  
Breaking  
breaking



# Technical Information

Silica

54" Pattern	Content	Abrasion	Light Fastness	Approximate Repeats	Notes
SILICA	100% Silicone	365,000 D.R.	200 Hrs. Class 4.5		Diluted Bleach Cleanable (4:1)
SILICA CHOPSTICKS	100% Silicone	500,000 D.R.	200 Hrs. Class 4.5	12.5" L 17.5" W	A Directional Pattern Diluted Bleach Cleanable (4:1)
SILICA COMPASS	100% Silicone	500,000 D.R.	200 Hrs. Class 4.5		A Directional Pattern Diluted Bleach Cleanable (4:1)
SILICA CUSP	100% Silicone	500,000 D.R.	200 Hrs. Class 4.5	12.5" L 12.375" W	A Directional Pattern Diluted Bleach Cleanable (4:1)
SILICA DEFLECT	100% Silicone	500,000 D.R.	200 Hrs. Class 4.5	25" L 13.75" W	A Directional Pattern Diluted Bleach Cleanable (4:1)
SILICA ETCH	100% Silicone	270,000 D.R.	200 Hrs. Class 4.5		Diluted Bleach Cleanable (4:1)
SILICA FIONA	100% Silicone	500,000 D.R.	200 Hrs. Class 4.5	24.5" L 16.625" W	A Directional Pattern Diluted Bleach Cleanable (4:1)
SILICA HIATUS	100% Silicone	500,000 D.R.	200 Hrs. Class 4.5	12.375" L 24.125" W	A Directional Pattern Diluted Bleach Cleanable (4:1)
SILICA KIP	100% Silicone	500,000 D.R.	200 Hrs. Class 4.5	22.125" L 12.75" W	A Directional Pattern Diluted Bleach Cleanable (4:1)
SILICA LEATHER	100% Silicone	210,000 D.R.	200 Hrs. Class 4		Diluted Bleach Cleanable (4:1)
SILICA STRIDE	100% Silicone	500,000 D.R.	200 Hrs. Class 4.5	24.75" L 24.75" W	Diluted Bleach Cleanable (4:1)
SILICA TECH	100% Silicone	270,000 D.R.	200 Hrs. Class 5		Diluted Bleach Cleanable (4:1)
SILICA TRIAD	100% Silicone	200,000 D.R.	200 Hrs. Class 4.5	12.5" L .25" W	Diluted Bleach Cleanable (4:1)

Cleaning Code: WS

A.C.T.:     

- All patterns are Bleach Cleanable
- All patterns pass CAL133 when the proper barrier is added

## EXPLANATION OF ACT ICONS UPHOLSTERY

### Fire Retardancy

Flammability testing determined as fabric's resistance to burning.

-  PASSES California 117-2013


### Colorfastness to Wet & Dry Crocking

Colorfastness to wet & dry crocking refers to the rubbing of color from the fabric onto clothing, hands or other material and can occur under wet or dry conditions.

-  PASSES AATCC 8-1974 Dry Crocking, Class 4 minimum; Wet Crocking, Class 3 minimum.


### Colorfastness to Light

Colorfastness to light is the degree to which the fabric will retain its color when exposed to light.

-  PASSES AATCC 16A-1974 or AATCC 16E-1976; Class 4 minimum at 40 hours. NOTE: Class 4 minimum at 60 hours is recommended for direct sunlight exposure situations.



### Physical Properties

3 physical property tests include: brush pill test to determine a fabric's pilling. Breaking/tensile strength is the ability of a fabric to withstand tension without breaking or tearing. Seam slippage is the pulling apart of the fabrics at the seams.

-  PASSES Brush Pill ASTM D3511, 3-4 minimum. Breaking Strength ASTM D3597-D1682-64 (1975) 50 lbs. minimum in warp & weft. Seam Slippage ASTM D3597-D434-75 25 lbs. minimum in warp & weft.

### Abrasion

Abrasion is the ability of a fabric to withstand damage from wear and rubbing. There is a general contract specification as well as a heavy duty specification.

-  PASSES General Contract ASTM 3597 modified (#10 cotton duck); 15,000 double rubs Wyzenbeek Method.
-  Heavy Duty ASTM 3597 modified (#10 cotton duck); 30,000 double rubs Wyzenbeek Method or ASTM D4966 (with 21 oz. weight); 40,000 rubs Martindale Method.

### Cleaning Code Definition

WS: Water-based cleaning agents or foam.

**spec**<sup>TM</sup>

SPEC FURNITURE INC.  
165 City View Drive,  
Toronto, Ontario Canada M9W 5B1

Tel: 416 246 5550 Fax: 416 246 5549  
Toll Free: 1 888 761 7732  
specit@specfurniture.com  
www.specfurniture.com