

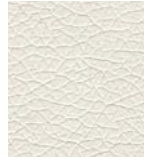
Beeline EPU GR3  
Canter EPU GR2  
Cover Cloth GR3  
Endurance EPU GR3  
Eon EPU GR3  
Faux Felt GR3  
Faux Mo GR4  
Flock GR4  
Groove EPU GR3  
Hobnob GR4  
Keynote GR3  
Kit GR4  
Solitaire GR3  
Sport GR3  
Synergy GR4  
White EPU GR3

## EPU and Crypton Color Card

From Momentum Textiles



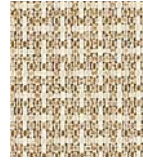
BEELINE EPU  
CANVAS



CANTER EPU  
SUMMER WHITE



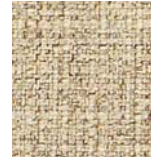
GROOVE EPU  
POLAR



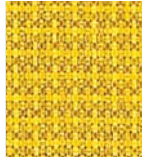
SOLITAIRE PUMICE



ENDURANCE EPU  
BISQUE



FLOCK TWINE



SOLITAIRE AZTEC



KEYNOTE CHAI



BEELINE EPU  
SPROUT



FLOCK AMBER



KIT MOONSTONE



CANTER EPU SAND



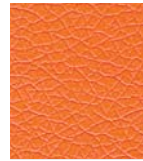
WHIT EPU HUMBLE



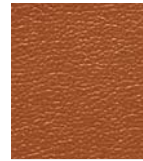
FAUX MO LIMON



FLOCK FERN



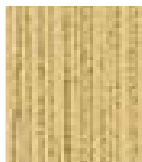
CANTER EPU  
ADOBE



ENDURANCE EPU  
COPPER



BEELINE EPU OAT



GROOVE EPU  
BEACH



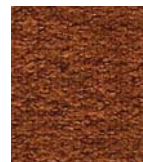
SPORT DAYGLOW



COVER CLOTH  
SORREL



COVER CLOTH ZEST



FAUX FELT CORAL



CANTER EPU EARTH



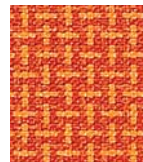
FLOCK HARP



HOBNOB SMITH



FAUX FELT SPROUT



SOLITAIRE PEEL



GROOVE EPU  
INTENSE



BEELINE EPU  
PORTOBELLO



SPORT FLAX



EON EPU SPRING



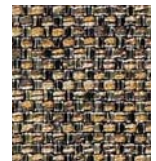
WHIT EPU INLAND



HOBNOB TANGELO



SOLITAIRE JUBILEE



KIT QUARTZ



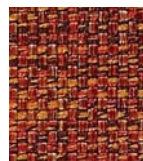
WHIT EPU CROWN



SPORT APPLE



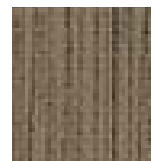
SOLITAIRE EMERALD



KIT FIESTA



SPORT ALARM



GROOVE EPU  
ARCHIVE



KIT EARTH



WHIT EPU  
SEAGRASS



HOBNOB FOREST



FLOCK PAPRIKA

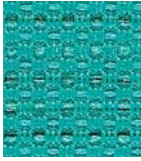


ENDURANCE EPU  
CLARET



CANTER EPU SABLE





SPORT TURQUOISE



FLOCK DUSK



BEELINE EPU  
NIMBUS



FAUX MO SKY



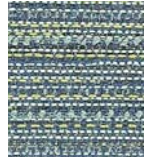
WHIT EPU FABLE



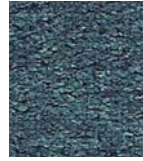
SOLITAIRE GALENA



BEELINE EPU  
GEYSER



SYNERGY AEGEAN



FAUX FELT POOL



GROOVE EPU  
DIGITAL



KIT PACIFIC



COVER CLOTH  
VESPER



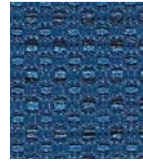
ENDURANCE EPU  
CASCADE



EON EPU COVE



SOLITAIRE CADET



SPORT CADET



SOLITAIRE VIOLET



FAUX MO DELTA



KIT PARADISE



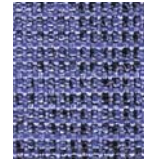
HOBNOB BAY



CANTER EPU  
BALLAD



GROOVE EPU  
GLACIER



HOBNOB IRIS



KIT AQUA



WHIT EPU OCEAN



COVER CLOTH  
DELFT



BEELINE EPU  
TIDAL



WHIT EPU  
NIGHTFALL



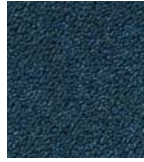
SOLITAIRE LAPIS



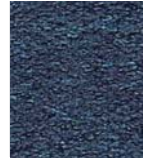
ENDURANCE EPU  
NORDIC



COVER CLOTH CYAN



FAUX MO SAPPHIRE



FAUX FELT LAGOON



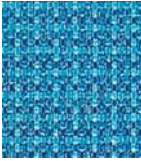
ENDURANCE EPU  
INK



SPORT COBALT



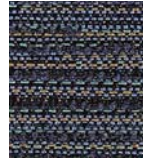
FAUX FELT QUAIL



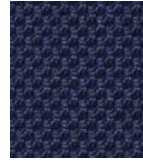
SOLITAIRE CYAN



COVER CLOTH  
INDIGO



SYNERGY DENIM



EON EPU ATLANTIC



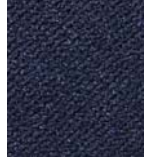
OATH AZURE



KIT BLAZER



FLOCK CAYMAN



FAUX MO MARINE



FLOCK BALTIC



SOLITAIRE MIDNIGHT



FAUX MO LAPIS



CANTER EPU INK



WHIT EPU  
PLATINUM



FAUX FELT  
PEBBLE



SPORT  
PEWTER



COVER CLOTH  
PLATINUM



ENDURANCE EPU  
GRAVEL



COVER CLOTH  
VESSEL



FLOCK  
FLINT



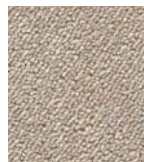
KIT  
PEBBLE



ENDURANCE EPU  
DOVE



SOLITAIRE  
DOVE



FAUX MO  
STONE



HOBNOB  
ASH



ENDURANCE EPU  
SEED



SOLITAIRE  
DERBY



ENDURANCE EPU  
TOBACCO



FAUX MO  
PATH



HOBNOB  
ZEBRA



ENDURANCE EPU  
GULL



WHIT EPU  
CASTLE



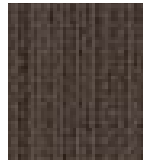
EON EPU  
MINERAL



HOBNOB  
SHALE



HOBNOB  
CARBON



GROOVE EPU  
EXPANSE



COVER CLOTH  
JET



SOLITAIRE  
TINSEL



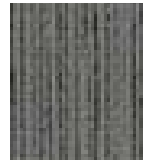
FAUX FELT  
STONE



FAUX FELT  
GRAPHITE



WHIT EPU  
FLINT



GROOVE EPU  
HARBOR



OATH  
CHARCOAL



FAUX MO  
SHALE



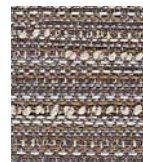
ENDURANCE EPU  
NOIR



FLOCK  
NICKEL



KEYNOTE  
GRANITE



SYNERGY  
BEDROCK



FAUX FELT  
FLANNEL



CANTER EPU  
STORM



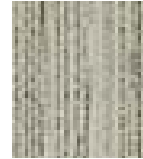
ENDURANCE EPU  
JETTY



SYNERGY  
CARBON



CANTER EPU  
ONYX



GROOVE EPU  
STONE



CANTER EPU  
QUARRY



BEELINE EPU  
FORGE



FAUX FELT  
CHARCOAL



KIT  
EBONY



COVER CLOTH  
GRAPHITE



SOLITAIRE  
ONYX



EON EPU  
TYPOGRAPHIC



# Technical Information

## EPU and Crypton Color

Width - Pattern	Content	Abrasion	Light fastness	Approximate Repeats	Notes
54" BEELINE EPU	100% EPU Polyurethane	900,000 D.R.	200 Hrs. Class 4		W Diluted Bleach Cleanable (4:1)
54" CANTER EPU	100% EPU Polyurethane	1,000,000 D.R.	200 Hrs. Class 4		W Diluted Bleach Cleanable (4:1)
59" COVER CLOTH	56% Repreve® Post Consumer Recycled Polyester, 44% Polyester	200,000 D.R.	40 Hrs. Class 4		W Diluted Bleach Cleanable (10:1)
54" ENDURANCE EPU	100% EPU Polyurethane	1,000,000 D.R.	200 Hrs. Class 4		W Diluted Bleach Cleanable (4:1)
54" EON EPU	100% EPU Polyurethane	900,000 D.R.	200 Hrs. Class 4	.625" L .625" W	W Diluted Bleach Cleanable (4:1)
56" FAUX FELT	62% Repreve® Post Consumer Recycled Polyester, 38% Polyester	75,000 D.R.	40 Hrs. Class 4.5		WS Diluted Bleach Cleanable (10:1)
55" FAUX MO	58% Repreve® Post Consumer Recycled Polyester, 42% Polyester	200,000 D.R.	40 Hrs. Class 4		A Directional Pattern WS Diluted Bleach Cleanable (10:1)
56" FLOCK	53% Recycled Polyester, 47% Polyester	140,000 D.R.	40 Hrs. Class 4.5		W Diluted Bleach Cleanable (10:1)
54" GROOVE EPU	100% EPU Polyurethane	900,000 D.R.	200 Hrs. Class 4	22.44" L 14.875" W	A Directional Pattern W Diluted Bleach Cleanable (4:1)
56" HOBNOB	51% Recycled Polyester, 49% Polyester	87,000 D.R.	40 Hrs. Class 5		W Diluted Bleach Cleanable (10:1)
54" KEYNOTE	100% Repreve® Post Consumer Recycled Polyester	100,000 D.R.	40 Hrs. Class 4		W Diluted Bleach Cleanable (10:1)
54" KIT	57% Recycled Polyester, 43% Polyester	200,000 D.R.	40 Hrs. Class 4.5		W Diluted Bleach Cleanable (10:1)
57" SOLITAIRE	50% Repreve® Post Consumer Recycled Polyester, 50% Polyester	200,000 D.R.	40 Hrs. Class 4	.125" L .125" W	W Diluted Bleach Cleanable (10:1)
56" SPORT	98% Post Consumer Recycled Polyester, 2% Polyester	100,000 D.R.	40 Hrs. Class 4.5		W Diluted Bleach Cleanable (10:1)
53" SYNERGY	71% Repreve® Post Consumer Recycled Polyester, 29% Polyester	165,000 D.R.	40 Hrs. Class 4		W Diluted Bleach Cleanable (10:1)
54" WHIT EPU	100% EPU Polyurethane	500,000 D.R.	200 Hrs. Class 4		W Diluted Bleach Cleanable (4:1)

A.C.T.:     

- All patterns are Bleach Cleanable
- All patterns pass CAL133 when the proper barrier is added

## EXPLANATION OF ACT ICONS UPHOLSTERY


### Fire Retardancy

Flammability testing determined as fabric's resistance to burning.

 PASSES  
California 117-2013

### Colorfastness to Wet & Dry Crocking

Colorfastness to wet & dry crocking refers to the rubbing of color from the fabric onto clothing, hands or other material and can occur under wet or dry conditions.

 PASSES  
• AATCC 8-1974 Dry Crocking, Class 4 minimum; Wet Crocking, Class 3 minimum.


### Colorfastness to Light

Colorfastness to light is the degree to which the fabric will retain its color when exposed to light.

 PASSES  
• AATCC 16A-1974 or AATCC 16E-1976; Class 4 minimum at 40 hours.  
NOTE: Class 4 minimum at 60 hours is recommended for direct sunlight exposure situations.


### Physical Properties


3 physical property tests include: brush pill test to determine a fabric's pilling. Breaking/tensile strength is the ability of a fabric to withstand tension without breaking or tearing. Seam slippage is the pulling apart of the fabrics at the seams.

 PASSES  
• Brush Pill ASTM D3511, 3-4 minimum.  
Breaking Strength ASTM D3597-D1682-64 (1975) 50 lbs. minimum in warp & weft.  
Seam Slippage ASTM D3597-D434-75 25 lbs. minimum in warp & weft.

### Abrasion

Abrasion is the ability of a fabric to withstand damage from wear and rubbing. There is a general contract specification as well as a heavy duty specification.

 PASSES  
• General Contract ASTM 3597 modified (#10 cotton duck); 15,000 double rubs Wyzenbeek Method.

 Heavy Duty ASTM 3597 modified (#10 cotton duck); 30,000 double rubs Wyzenbeek Method or ASTM D4966 (with 21 oz. weight); 40,000 rubs Martindale Method.

### Cleaning Code Definition

W: Water-based foam or cleaner.  
WS: Water-based cleaning agents or foam.



**SPEC FURNITURE INC.**  
165 City View Drive,  
Toronto, Ontario Canada M9W 5B1

Tel: 416 246 5550 Fax: 416 246 5549  
**Toll Free: 1 888 761 7732**  
specit@specfurniture.com  
[www.specfurniture.com](http://www.specfurniture.com)