

spec™



JAZZY

Tuned to Your Beat



Jazzy (Bar Height) Shell: Formica, 8794-58 Enamel; Frame: RAL 6019.

Jazzy (Dining Height) Shell: Stained-to-match Wilsonart, 7918K-12 Landmark Wood; Frame: RAL 9016.

EndZone Laminate: Wilsonart, 7918K-12 Landmark Wood; Trough: RAL 9016.

Tailor Booth Upholstery: Momentum, Faux Felt, Flannel; Frame: RAL 9016.

Tailor Booth Tables Laminate: Wilsonart, D354-60 Designer White; Frame: RAL 9016.

Jazzy (Front Cover) Dining Height Shell: Formica, 6907-58 Amarena; Frame: RAL 9016.

Jazzy (Front Cover) Counter Height; Bar Height; Dining Height Stacked Shell: Wilsonart, D427-60 Linen; Frames: RAL 4001, RAL 4006, Chrome.

The Height of Modern Design

Jazzy has both the looks and the moves! Contoured maple ply shell sits beautifully on the bar, stackable dining and counter height frames to create a design composition that hits the right tone.

The Freedom to Do What You Want

Jazzy's versatile collaborative design fits into diverse environments: from cafeterias to corporate offices, and training rooms to lounge spaces. Choose from 76 Spectone finishes or chrome for the frame, and for the contoured shell, select a stain or go with matching or contrasting laminates. With infinite finish combinations, Jazzy provides absolute creative freedom for designers of all tastes.



Jazzy Shells: Formica, 845-58 Spectrum Red; Frames: RAL 9005.

Docker Laminate: Wilsonart, 7960K-18 Studio Teak; Steel Frame Parts: RAL 7032; Wood Frame Parts: Stained-to-match Wilsonart, 7960K-18 Studio Teak.

STATEMENT OF LINE



2141
JAZZY DINING HEIGHT



2144
JAZZY COUNTER HEIGHT



2147
JAZZY BAR HEIGHT



2199
JAZZY DOLLY

Maple Ply Shell Options

Three different looks for Jazzy's maple ply shell equals endless color possibilities!



Staining the shell will finish front, back and the edge in the selected stain.



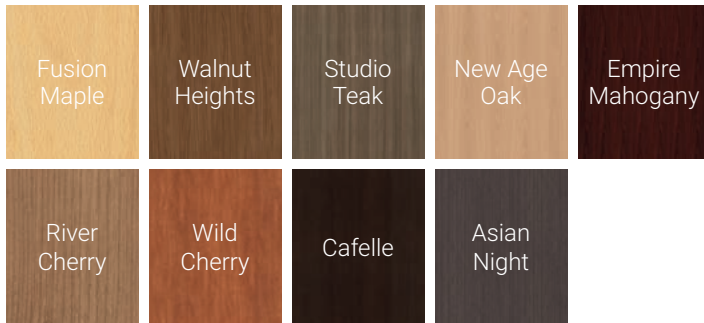
The shell's front and back can be finished in the same laminate. Maple ply edge is exposed and clear-coated.



Choose a different laminate for the front and back. Maple ply edge is exposed and clear-coated.

Maple Ply Shell Stains

Seat shell is available clear-coated or in nine standard wood stains. Stain-to-match is available at an upcharge.



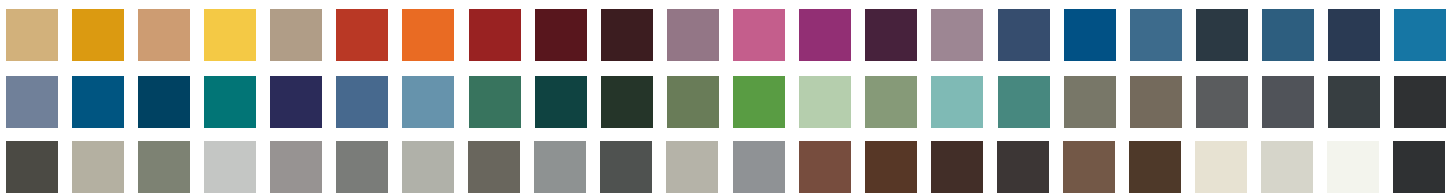
Maple Ply Shell Laminates

Choose a maple ply shell laminate from any postform grade, non-high-gloss Wilsonart, Formica and Arborite laminates at no upcharge.



Metal Finishes

Personalize your chair frame with 76 Spectone colors from our line of powder epoxy coatings, including five textured finishes, or chrome.



Tel: 416 246 5550
Fax: 416 246 5549

Toll Free: 1 888 761 7732
specit@specfurniture.com

specfurniture.com

