

2000 SERIES Lounge Seating

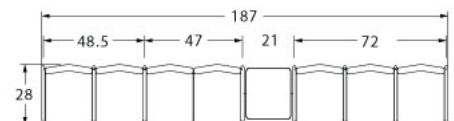
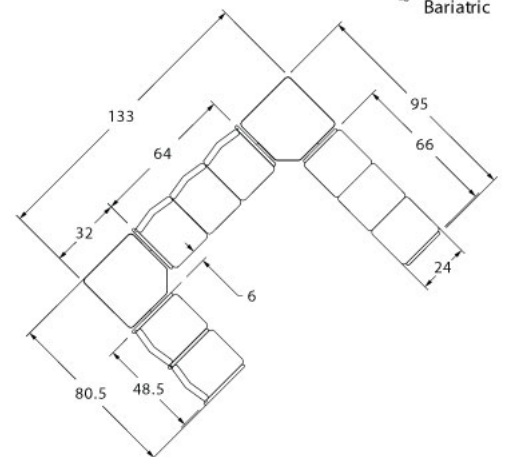
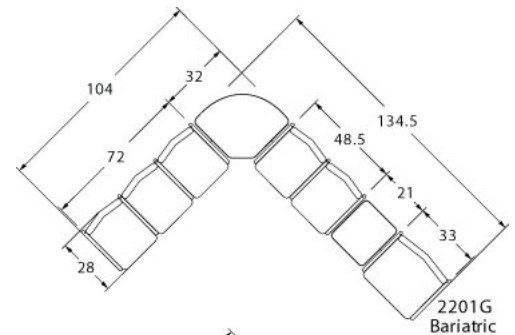
LAYOUTS



Description

- A popular choice for healthcare and institutional applications, 2000 Series combines great looks and comfort, with durability to meet real life demands.
- Available in one, two or three seaters as freestanding or connected.
- Your layout possibilities are unlimited with spacer, radius and corner tables – for both standard and bariatric seating in virtually any combination.
- Standard seat width is 22". Bariatric separate seat and back is a 30" wide seat and is load tested to 750 lbs. Cannot be connected to other bariatric seats.
- Zipper removable seats and backs are standard on split back designs.
- All models offer a choice of no center arms or half arm.
- Option of one piece or separate seat and back.
- Standard in 1.5" tube.
- Foam formulated to meet California Bulletin 133 standards is available.
- Please send a drawing of the configuration you require with your order.
- Optional floor mounting is available.
- For fabrics you wish railroaded or repeats larger than 5" x 5", please contact the factory with repeat information and yardage requirement will be provided.

LAYOUTS AND DIMENSIONS



2000 SERIES



PLACING AN ORDER IS EASY

PRODUCT CODE

2201C

Series
22 : 2000 Series

Arm/Other
0 : Outside Arm
1 : Half Arm
3 : Easy Access Hip Chair

Number of Seats
1 : Single Seater
2 : Two Seater
3 : Three Seater

Chair Type
C : One Piece Seat and Back
CS : Seperate Seat and Back
G : Bariatric



OPTIONS

One-Piece Seat and Back

Separate Seat and Back



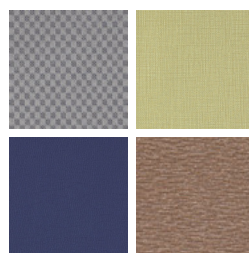
FINISHES

FRAME



Select from one of our 76 standard Spectone colors

FABRIC



Select fabrics from one of our textile partners



2000 SERIES

One Piece Single Seater with arms

Standard Features

- One piece seat and back
- Fully welded 1.5" frame
- Frame in any Spectone color
- Glides
- Use in connected layouts at no upcharge
- Ships assembled as 1, 2 or 3 seaters
- Ships 1/carton 17 cu ft

Options

- Connected and freestanding tables
- Antibacterial and antimicrobial fabrics available
- CAL 133

Contact Spec Customer Service to railroad fabrics (specify repeat info and yardage requirement will be provided) and for repeats greater than 5" x 5"



One Piece Single Seater with arms – Four-point

COM 1.75 yds
1.75 yd COM per single seat and back

MODEL	COM	GR 1	GR 2	GR 3	GR 4	GR 5	GR 6
2201C	564	638	662	712	786	843	915

Dimensions (inches)

seat H	18.0	seat W	22.0	arm H	26.0
total H	35.0	total W	25.0	depth	26.5

Exceeds BIFMA Seating Durability Test to 500 lbs per chair
CAL 133, add \$94 List per chair



2201C
38 lbs



2000 SERIES

One Piece Two and Three Seaters with outside arms

Standard Features

- One piece seat and back
- Fully welded 1.5" frame
- Frame in any Spectone color
- Glides
- Use in connected layouts at no upcharge
- Ships assembled as 1, 2 or 3 seaters
- Ships 1/carton 28 cu ft (2 seater),
1/carton 42 cu ft (3 seater)

Options

- Connected and freestanding tables
- Antibacterial and antimicrobial fabrics available
- CAL 133

Contact Spec Customer Service to railroad fabrics (specify repeat info and yardage requirement will be provided) and for repeats greater than 5" x 5"



One Piece Two Seater with outside arms – Four-point

COM 3.5 yds
1.75 yd COM per single seat and back

MODEL	COM	GR 1	GR 2	GR 3	GR 4	GR 5	GR 6
2202C	1036	1185	1233	1331	1479	1591	1739

Dimensions (inches)

seat H	18.0	seat W	22.0	arm H	26.0
total H	35.0	total W	47.0	depth	26.5

Exceeds BIFMA Seating Durability Test to 500 lbs per two seater
CAL 133, add \$188 List per two seater



2202C
68 lbs

One Piece Three Seater with outside arms – Four-point

COM 5.25 yds
1.75 yd COM per single seat and back

MODEL	COM	GR 1	GR 2	GR 3	GR 4	GR 5	GR 6
2203C	1524	1746	1820	1966	2189	2357	2578

Dimensions (inches)

seat H	18.0	seat W	22.0	arm H	26.0
total H	35.0	total W	69.0	depth	26.5

Exceeds BIFMA Seating Durability Test to 500 lbs per three seater
CAL 133, add \$282 List per three seater



2203C
98 lbs



2000 SERIES

One Piece Two and Three Seaters with half arms

Standard Features

- One piece seat and back
- Fully welded 1.5" frame
- Frame in any Spectone color
- Glides
- Use in connected layouts at no upcharge
- Ships assembled as 1, 2 or 3 seaters
- Ships 1/carton 28 cu ft (2 seater),
1/carton 42 cu ft (3 seater)

Options

- Connected and freestanding tables
- Antibacterial and antimicrobial fabrics available
- CAL 133

Contact Spec Customer Service to railroad fabrics (specify repeat info and yardage requirement will be provided) and for repeats greater than 5" x 5"



One Piece Two Seater with half arms – Four-point

COM 3.5 yds
1.75 yd COM per single seat and back

MODEL	COM	GR 1	GR 2	GR 3	GR 4	GR 5	GR 6
2212C	1130	1276	1326	1423	1571	1683	1831

Dimensions (inches)

seat H	18.0	seat W	22.0	arm H	26.0
total H	35.0	total W	48.5	depth	26.5

Exceeds BIFMA Seating Durability Test to 500 lbs per two seater
CAL 133, add \$188 List per two seater



2212C
72 lbs

One Piece Three Seater with half arms – Four-point

COM 5.25 yds
1.75 yd COM per single seat and back

MODEL	COM	GR 1	GR 2	GR 3	GR 4	GR 5	GR 6
2213C	1692	1914	1988	2136	2357	2526	2746

Dimensions (inches)

seat H	18.0	seat W	22.0	arm H	26.0
total H	35.0	total W	72.0	depth	26.5

Exceeds BIFMA Seating Durability Test to 500 lbs per three seater
CAL 133, add \$282 List per three seater



2213C
99 lbs



2000 SERIES

One Piece Easy Access Hip Single Seater with arms

Standard Features

- One piece seat and back
- Fully welded 1.5" frame
- Frame in any Spectone color
- Glides
- 24" seat height, no seat pitch (level)
- Footrest which assists entering/exiting chair
- Available only as four-point
- Ships assembled
- Ships 1/carton 19 cu ft

Options

- Antibacterial and antimicrobial fabrics available
- CAL 133

Contact Spec Customer Service to railroad fabrics (specify repeat info and yardage requirement will be provided) and for repeats greater than 5" x 5"



One Piece Easy Access Hip Single Seater with arms

COM 1.75 yds

1.75 yd COM per single seat and back

MODEL	COM	GR 1	GR 2	GR 3	GR 4	GR 5	GR 6
2231C	651	726	750	799	873	930	1002

Dimensions (inches)

seat H	24.0	seat W	22.0	arm H	30.5
total H	38.0	total W	25.0	depth	26.5

Exceeds BIFMA Seating Durability Test to 500 lbs per chair

CAL 133, add \$94 List per chair



2231C
45 lbs



2000 SERIES

Separate Seat and Back Single Seater with arms – Four-point

Standard Features

- Separate seat and back
- Fully welded 1.5" frame
- Frame in any Spectone color
- Glides
- Zippered removable covers
- Use in connected layouts at no upcharge
- Ships assembled as 1, 2 or 3 seaters
- Ships 1/carton 17 cu ft

Options

- Connected and freestanding tables
- Antibacterial and antimicrobial fabrics available
- Different fabric on seat and back at no upcharge
- CAL 133

Contact Spec Customer Service to railroad fabrics (specify repeat info and yardage requirement will be provided) and for repeats greater than 5" x 5"



Separate Seat and Back Single Seater with arms – Four-point

COM 1.75 yds
 1.0 yd COM per single seat
 0.75 yd COM per single back

MODEL	COM	GR 1	GR 2	GR 3	GR 4	GR 5	GR 6
2201CS	731	804	828	879	951	1007	1083

Dimensions (inches)

seat H	18.0	seat W	22.0	arm H	26.0
total H	35.0	total W	25.0	depth	26.5

Exceeds BIFMA Seating Durability Test to 500 lbs per chair
 CAL 133, add \$94 List per chair



2201CS
38 lbs



2000 SERIES

Separate Seat and Back Two and Three Seaters with outside arms – Four-point

Standard Features

- Separate seat and back
- Fully welded 1.5" frame
- Frame in any Spectone color
- Glides
- Zippered removable covers
- Use in connected layouts at no upcharge
- Ships assembled as 1, 2 or 3 seaters
- Ships 1/carton 28 cu ft (2 seater),
1/carton 42 cu ft (3 seater)

Options

- Connected and freestanding tables
- Antibacterial and antimicrobial fabrics available
- Different fabric on seat and back at no upcharge
- CAL 133

Contact Spec Customer Service to railroad fabrics (specify repeat info and yardage requirement will be provided) and for repeats greater than 5" x 5"



Separate Seat and Back Two Seater with outside arms – Four-point

COM 3.5 yds
1.0 yd COM per single seat
0.75 yd COM per single back

MODEL	COM	GR 1	GR 2	GR 3	GR 4	GR 5	GR 6
2202CS	1309	1456	1507	1604	1752	1865	2013

Dimensions (inches)
seat H 18.0 seat W 22.0 arm H 26.0
total H 35.0 total W 47.0 depth 26.5

Exceeds BIFMA Seating Durability Test to 500 lbs per two seater
CAL 133, add \$188 List per two seater



2202CS
68 lbs

Separate Seat and Back Three Seater with outside arms – Four-point

COM 5.25 yds
1.0 yd COM per single seat
0.75 yd COM per single back

MODEL	COM	GR 1	GR 2	GR 3	GR 4	GR 5	GR 6
2203CS	1938	2160	2235	2381	2605	2773	2993

Dimensions (inches)
seat H 18.0 seat W 22.0 arm H 26.0
total H 35.0 total W 69.0 depth 26.5

Exceeds BIFMA Seating Durability Test to 500 lbs per three seater
CAL 133, add \$282 List per three seater



2203CS
98 lbs



2000 SERIES

Separate Seat and Back Two and Three Seaters with half arms – Four-point

Standard Features

- Separate seat and back
- Fully welded 1.5" frame
- Frame in any Spectone color
- Glides
- Zippered removable covers
- Use in connected layouts at no upcharge
- Ships assembled as 1, 2 or 3 seaters
- Ships 1/carton 28 cu ft (2 seater),
1/carton 42 cu ft (3 seater)

Options

- Connected and freestanding tables
- Antibacterial and antimicrobial fabrics available
- Different fabric on seat and back at no upcharge
- CAL 133

Contact Spec Customer Service to railroad fabrics (specify repeat info and yardage requirement will be provided) and for repeats greater than 5" x 5"



Separate Seat and Back Two Seater with half arms – Four-point

COM 3.5 yds
1.0 yd COM per single seat
0.75 yd COM per single back

MODEL	COM	GR 1	GR 2	GR 3	GR 4	GR 5	GR 6
2212CS	1462	1609	1657	1756	1904	2017	2163

Dimensions (inches)
seat H 18.0 seat W 22.0 arm H 26.0
total H 35.0 total W 48.5 depth 26.5

Exceeds BIFMA Seating Durability Test to 500 lbs per two seater
CAL 133, add \$188 List per two seater



2212CS
72 lbs

Separate Seat and Back Three Seater with half arms – Four-point

COM 5.25 yds
1.0 yd COM per single seat
0.75 yd COM per single back

MODEL	COM	GR 1	GR 2	GR 3	GR 4	GR 5	GR 6
2213CS	2193	2413	2487	2635	2854	3023	3246

Dimensions (inches)
seat H 18.0 seat W 22.0 arm H 26.0
total H 35.0 total W 72.0 depth 26.5

Exceeds BIFMA Seating Durability Test to 500 lbs per three seater
CAL 133, add \$282 List per three seater



2213CS
99 lbs



2000 SERIES

Separate Seat and Back Bariatric Single Seater with arms

Standard Features

- Separate seat and back
- Fully welded 1.5" frame
- Frame in any Spectone color
- Glides
- Zippered removable covers
- Use in connected layouts at no upcharge
- Available only as separate seat and back
- Available only as four-point
- Cannot connect bariatric to bariatric seating
- Ships assembled as 1, 2 or 3 seaters
- Ships 1/carton 22 cu ft

Options

- Connected and freestanding tables
- Antibacterial and antimicrobial fabrics available
- Different fabric on seat and back at no upcharge
- CAL 133

Contact Spec Customer Service to railroad fabrics (specify repeat info and yardage requirement will be provided) and for repeats greater than 5" x 5"



Separate Seat and Back Bariatric Single Seater with arms

COM 3.0 yds

1.5 yd COM per single seat

1.5 yd COM per single back

MODEL	COM	GR 1	GR 2	GR 3	GR 4	GR 5	GR 6
2201G	935	1071	1115	1206	1342	1445	1582

Dimensions (inches)

seat H	18.0	seat W	30.0	arm H	26.0
total H	35.0	total W	33.0	depth	26.5

Exceeds BIFMA Seating Durability Test to 750 lbs per chair
 CAL 133, add \$116 List per chair



2201G
48 lbs



2000 SERIES

Separate Seat and Back Easy Access Hip Single Seater with arms

Standard Features

- Separate seat and back
- Fully welded 1.5" frame
- Frame in any Spectone color
- Glides
- Zippered removable covers
- 24" seat height, no seat pitch (level)
- Footrest which assists entering/exiting chair
- Available only as four-point
- Ships assembled
- Ships 1/carton 19 cu ft

Options

- Antibacterial and antimicrobial fabrics available
- Different fabric on seat and back at no upcharge
- CAL 133

Contact Spec Customer Service to railroad fabrics (specify repeat info and yardage requirement will be provided) and for repeats greater than 5" x 5"



Separate Seat and Back Easy Access Hip Single Seater with arms

COM 1.75 yds
 1.0 yd COM per single seat
 0.75 yd COM per single back

MODEL	COM	GR 1	GR 2	GR 3	GR 4	GR 5	GR 6
2231CS	819	892	916	966	1039	1096	1169

Dimensions (inches)

seat H	24.0	seat W	22.0	arm H	30.25
total H	38.0	total W	25.0	depth	26.5

Exceeds BIFMA Seating Durability Test to 500 lbs per chair
 CAL 133, add \$94 List per chair



2231CS
45 lbs



2000 SERIES

Freestanding Lounge Tables
 Corner and Spacer Connecting Tables

Standard Features

- Tops in laminate or veneer
- Select from 15 standard laminates or choose any standard Wilsonart, Nevamar, Formica, Arborite and Pionite matte finish laminates at no upcharge
- Table tops available with PVC Flat edge (PVF) or Self edge (SE)
- 9 standard hardwood edge stains. Stain-to-match available at no upcharge.
- Frame in any Spectone color
- Glides
- Tops utilize Nu Green earth friendly core

Options

- Non-standard laminates, contact Spec for pricing
- Custom size spacer tables for restricted spaces
- Other sizes may be available

Radius Corner Tables are recommended for open areas



Corner and Spacer Connecting Tables

Model	Laminate PVF/SE	Weight	Cu.Ft.
22RC/23RC 32 x 32 <i>Radius Corner Table</i>	575	31	2
22SC/23SC 32 x 32 <i>Square Corner Table</i>	575	32	2
22TC45/23TC45 19 x 23 <i>45 degree Corner Table</i>	441	26	2
22ST/23ST 21 x 24 <i>Spacer or End Table</i>	441	21	2

