



Pricing March 1, 2020
Discount 57.7% from List prices

spec

MAS SIN 33721

2000 SERIES Lounge Seating

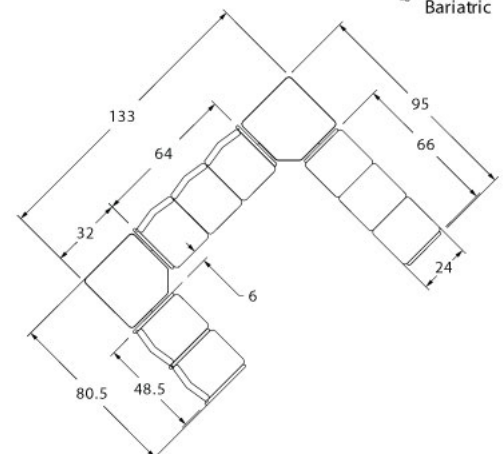
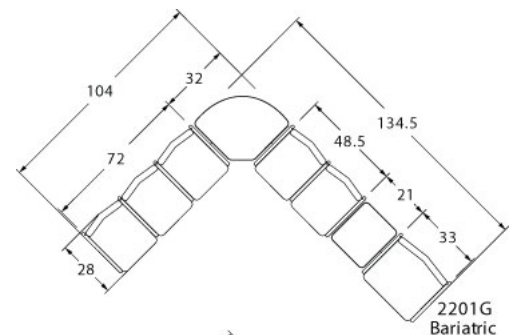
LAYOUTS



Description

- A popular choice for healthcare and institutional applications, 2000 Series combines great looks and comfort, with durability to meet real life demands.
- Available in one, two or three seaters as freestanding or connected.
- Your layout possibilities are unlimited with spacer, radius and corner tables – for both standard and bariatric seating in virtually any combination.
- Standard seat width is 22". Bariatric separate seat and back is a 30" wide seat and is load tested to 750 lbs. Cannot be connected to other bariatric seats.
- Zipper removable seats and backs are standard on separate seat and back designs.
- All models offer a choice of no center arms or half arm.
- Option of one piece or separate seat and back.
- Standard in 1.5" tube.
- Please send a drawing of the configuration you require with your order.
- Optional floor mounting is available.
- For fabrics you wish railroaded or repeats larger than 5" x 5", please contact the factory with repeat information and yardage requirement will be provided.

LAYOUTS AND DIMENSIONS





Pricing March 1, 2020
Discount 57.7% from List prices

spec

MAS SIN 33721

2000 SERIES Lounge Seating



PRODUCT CODE

2201C

Series

22 : 2000 Series

Arm/Other

0 : Outside Arm
1 : Half Arm
3 : Easy Access Hip Chair

Number of Seats

1 : Single Seater
2 : Two Seater
3 : Three Seater

Chair Type

C : One Piece Seat and Back
CS : Separate Seat and Back
G : Bariatric

OPTIONS

One-Piece Seat and Back



Separate Seat and Back



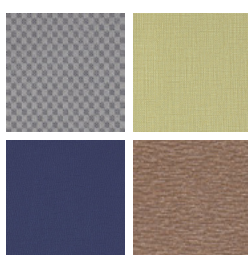
FINISHES

FRAME



Select from one of our 76 standard Spectone colors

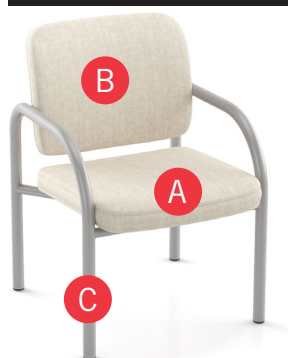
FABRIC



Select fabrics from one of our textile partners

See Spectone Card or specfurniture.com/materials/finishes for a complete list of finish options and colors.

HOW TO ORDER



Specify Model

- A** Specify Fabric - Seat
Manufacturer, Pattern Name, Color
- B** Specify Fabric - Back
Manufacturer, Pattern Name, Color
- C** Specify Frame Finish

Optional: CAL 133, Moisture Barrier, Connecting Tables

Model	Fabric - Seat	Fabric - Back	Frame Finish
2201CS	Momentum, Beeline, Canvas	Momentum, Beeline, Canvas	Silver



Pricing March 1, 2020
Discount 57.7% from List prices



MAS SIN 33721

2000 SERIES Lounge Seating

One Piece Single Seater with arms

Standard Features

- One piece seat and back
- Fully welded 1.5" frame
- Frame in any Spectone color
- Glides
- Use in connected layouts at no upcharge
- Ships assembled
- Ships 1/carton 17 cu ft

Options

- Connecting tables
- Antibacterial and antimicrobial fabrics available
- CAL 133

Contact Spec Customer Service to railroad fabrics
(specify repeat info and yardage requirement will be
provided) and for repeats greater than 5" x 5"



One Piece Single Seater with arms – Four-point

COM 1.75 yds

1.75 yd COM per single seat and back

MODEL	COM	GR 1	GR 2	GR 3	GR 4	GR 5	GR 6
2201C	693	782	812	872	963	1032	1123

Dimensions (inches)

seat H	18.0	seat W	22.0	arm H	26.0
total H	35.0	total W	25.0	depth	26.5

Exceeds BIFMA Seating Durability Test to 500 lbs per chair
CAL 133, add \$108 List per chair



2201C
38 lbs



Pricing March 1, 2020
Discount 57.7% from List prices



MAS SIN 33721

2000 SERIES Lounge Seating

One Piece Two and Three Seaters with outside arms

Standard Features

- One piece seat and back
- Fully welded 1.5" frame
- Frame in any Spectone color
- Glides
- Use in connected layouts at no upcharge
- Ships assembled
- Ships 1/carton 28 cu ft (2 seater),
1/carton 42 cu ft (3 seater)

Options

- Connecting tables
- Antibacterial and antimicrobial fabrics available
- CAL 133

Contact Spec Customer Service to railroad fabrics (specify repeat info and yardage requirement will be provided) and for repeats greater than 5" x 5"



One Piece Two Seater with outside arms – Four-point

COM 3.5 yds

1.75 yd COM per single seat and back

MODEL	COM	GR 1	GR 2	GR 3	GR 4	GR 5	GR 6
2202C	1270	1452	1511	1633	1813	1951	2132

Dimensions (inches)

seat H	18.0	seat W	22.0	arm H	26.0
total H	35.0	total W	47.0	depth	26.5

Exceeds BIFMA Seating Durability Test to 500 lbs per two seater
CAL 133, add \$216 List per two seater



2202C
68 lbs

One Piece Three Seater with outside arms – Four-point

COM 5.25 yds

1.75 yd COM per single seat and back

MODEL	COM	GR 1	GR 2	GR 3	GR 4	GR 5	GR 6
2203C	1869	2140	2230	2411	2682	2890	3161

Dimensions (inches)

seat H	18.0	seat W	22.0	arm H	26.0
total H	35.0	total W	69.0	depth	26.5

Exceeds BIFMA Seating Durability Test to 500 lbs per three seater
CAL 133, add \$324 List per three seater



2203C
98 lbs



Pricing March 1, 2020
Discount 57.7% from List prices

spec

MAS SIN 33721

2000 SERIES Lounge Seating

One Piece Two and Three Seaters with half arms

Standard Features

- One piece seat and back
- Fully welded 1.5" frame
- Frame in any Spectone color
- Glides
- Use in connected layouts at no upcharge
- Ships assembled
- Ships 1/carton 28 cu ft (2 seater),
1/carton 42 cu ft (3 seater)

Options

- Connecting tables
- Antibacterial and antimicrobial fabrics available
- CAL 133

Contact Spec Customer Service to railroad fabrics
(specify repeat info and yardage requirement will
be provided) and for repeats greater than 5" x 5"



One Piece Two Seater with half arms – Four-point

COM 3.5 yds

1.75 yd COM per single seat and back

MODEL	COM	GR 1	GR 2	GR 3	GR 4	GR 5	GR 6
2212C	1383	1566	1626	1745	1926	2064	2243

Dimensions (inches)

seat H	18.0	seat W	22.0	arm H	26.0
total H	35.0	total W	48.5	depth	26.5

Exceeds BIFMA Seating Durability Test to 500 lbs per two seater
CAL 133, add \$216 List per two seater



2212C
70 lbs

One Piece Three Seater with half arms – Four-point

COM 5.25 yds

1.75 yd COM per single seat and back

MODEL	COM	GR 1	GR 2	GR 3	GR 4	GR 5	GR 6
2213C	2073	2346	2437	2617	2890	3096	3366

Dimensions (inches)

seat H	18.0	seat W	22.0	arm H	26.0
total H	35.0	total W	72.0	depth	26.5

Exceeds BIFMA Seating Durability Test to 500 lbs per three seater
CAL 133, add \$324 List per three seater



2213C
99 lbs



Pricing March 1, 2020
Discount 57.7% from List prices



MAS SIN 33721

2000 SERIES Lounge Seating

One Piece Easy Access Hip Single Seater with arms

Standard Features

- One piece seat and back
- Fully welded 1.5" frame
- Frame in any Spectone color
- Glides
- 24" seat height, no seat pitch (level)
- Footrest which assists entering/exiting chair
- Available only as four-point
- Ships assembled
- Ships 1/carton 19 cu ft

Options

- Antibacterial and antimicrobial fabrics available
- CAL 133

*Contact Spec Customer Service to railroad fabrics
(specify repeat info and yardage requirement will
be provided) and for repeats greater than 5" x 5"*



One Piece Easy Access Hip Single Seater with arms

COM 1.75 yds

1.75 yd COM per single seat and back

MODEL	COM	GR 1	GR 2	GR 3	GR 4	GR 5	GR 6
2231C	796	885	915	976	1066	1134	1225

Dimensions (inches)

seat H	24.0	seat W	22.0	arm H	30.5
total H	38.0	total W	25.0	depth	26.5

Exceeds BIFMA Seating Durability Test to 500 lbs per chair

CAL 133, add \$108 List per chair



2231C
45 lbs



Pricing March 1, 2020
Discount 57.7% from List prices



MAS SIN 33721

2000 SERIES Lounge Seating

Separate Seat and Back Single Seater with arms – Four-point

Standard Features

- Separate seat and back
- Fully welded 1.5" frame
- Frame in any Spectone color
- Glides
- Zippered removable covers
- Use in connected layouts at no upcharge
- Ships assembled
- Ships 1/carton 17 cu ft

Options

- Connecting tables
- Antibacterial and antimicrobial fabrics available
- Different fabric on seat and back at no upcharge
- CAL 133

Contact Spec Customer Service to railroad fabrics
(specify repeat info and yardage requirement will
be provided) and for repeats greater than 5" x 5"



Separate Seat and Back Single Seater with arms – Four-point

COM 1.75 yds

1.0 yd COM per single seat

0.75 yd COM per single back

MODEL	COM	GR 1	GR 2	GR 3	GR 4	GR 5	GR 6
2201CS	895	986	1018	1077	1167	1237	1325

Dimensions (inches)

seat H	18.0	seat W	22.0	arm H	26.0
total H	35.0	total W	25.0	depth	26.5

Exceeds BIFMA Seating Durability Test to 500 lbs per chair
CAL 133, add \$108 List per chair



2201CS
38 lbs



Pricing March 1, 2020
Discount 57.7% from List prices

spec

MAS SIN 33721

2000 SERIES Lounge Seating

Separate Seat and Back Two and Three Seaters with outside arms – Four-point

Standard Features

- Separate seat and back
- Fully welded 1.5" frame
- Frame in any Spectone color
- Glides
- Zippered removable covers
- Use in connected layouts at no upcharge
- Ships assembled
- Ships 1/carton 28 cu ft (2 seater),
1/carton 42 cu ft (3 seater)

Options

- Connecting tables
- Antibacterial and antimicrobial fabrics available
- Different fabric on seat and back at no upcharge
- CAL 133

Contact Spec Customer Service to railroad fabrics
(specify repeat info and yardage requirement will
be provided) and for repeats greater than 5" x 5"



Separate Seat and Back Two Seater with outside arms – Four-point

COM 3.5 yds

1.0 yd COM per single seat

0.75 yd COM per single back

MODEL	COM	GR 1	GR 2	GR 3	GR 4	GR 5	GR 6
2202CS	1604	1786	1846	1966	2148	2285	2465

Dimensions (inches)

seat H	18.0	seat W	22.0	arm H	26.0
total H	35.0	total W	47.0	depth	26.5

Exceeds BIFMA Seating Durability Test to 500 lbs per two seater
CAL 133, add \$216 List per two seater



2202CS
68 lbs

Separate Seat and Back Three Seater with outside arms – Four-point

COM 5.25 yds

1.0 yd COM per single seat

0.75 yd COM per single back

MODEL	COM	GR 1	GR 2	GR 3	GR 4	GR 5	GR 6
2203CS	2378	2648	2738	2917	3190	3398	3669

Dimensions (inches)

seat H	18.0	seat W	22.0	arm H	26.0
total H	35.0	total W	69.0	depth	26.5

Exceeds BIFMA Seating Durability Test to 500 lbs per three seater
CAL 133, add \$324 List per three seater



2203CS
98 lbs



Pricing March 1, 2020
Discount 57.7% from List prices

spec

MAS SIN 33721

2000 SERIES Lounge Seating

Separate Seat and Back Two and Three Seaters with half arms – Four-point

Standard Features

- Separate seat and back
- Fully welded 1.5" frame
- Frame in any Spectone color
- Glides
- Zippered removable covers
- Use in connected layouts at no upcharge
- Ships assembled
- Ships 1/carton 28 cu ft (2 seater),
1/carton 42 cu ft (3 seater)

Options

- Connecting tables
- Antibacterial and antimicrobial fabrics available
- Different fabric on seat and back at no upcharge
- CAL 133

Contact Spec Customer Service to railroad fabrics
(specify repeat info and yardage requirement will
be provided) and for repeats greater than 5" x 5"



Separate Seat and Back Two Seater with half arms – Four-point

COM 3.5 yds

1.0 yd COM per single seat

0.75 yd COM per single back

MODEL	COM	GR 1	GR 2	GR 3	GR 4	GR 5	GR 6
2212CS	1792	1972	2031	2152	2334	2470	2653

Dimensions (inches)

seat H	18.0	seat W	22.0	arm H	26.0
total H	35.0	total W	48.5	depth	26.5

Exceeds BIFMA Seating Durability Test to 500 lbs per two seater
CAL 133, add \$216 List per two seater



2212CS
70 lbs

Separate Seat and Back Three Seater with half arms – Four-point

COM 5.25 yds

1.0 yd COM per single seat

0.75 yd COM per single back

MODEL	COM	GR 1	GR 2	GR 3	GR 4	GR 5	GR 6
2213CS	2687	2958	3049	3229	3500	3708	3978

Dimensions (inches)

seat H	18.0	seat W	22.0	arm H	26.0
total H	35.0	total W	72.0	depth	26.5

Exceeds BIFMA Seating Durability Test to 500 lbs per three seater
CAL 133, add \$324 List per three seater



2213CS
99 lbs



Pricing March 1, 2020
Discount 57.7% from List prices



MAS SIN 33721

2000 SERIES Lounge Seating

Separate Seat and Back Bariatric Single Seater with arms

Standard Features

- Separate seat and back
- Fully welded 1.5" frame
- Frame in any Spectone color
- Glides
- Zippered removable covers
- Use in connected layouts at no upcharge
- Available only as separate seat and back
- Available only as four-point
- Cannot connect bariatric to bariatric seating
- Ships assembled
- Ships 1/carton 22 cu ft

Options

- Connecting tables
- Antibacterial and antimicrobial fabrics available
- Different fabric on seat and back at no upcharge
- CAL 133

Contact Spec Customer Service to railroad fabrics
(specify repeat info and yardage requirement will
be provided) and for repeats greater than 5" x 5"



Separate Seat and Back Bariatric Single Seater with arms

COM 3.0 yds

1.5 yd COM per single seat

1.5 yd COM per single back

MODEL	COM	GR 1	GR 2	GR 3	GR 4	GR 5	GR 6
2201G	1147	1314	1368	1478	1645	1771	1936

Dimensions (inches)

seat H	18.0	seat W	30.0	arm H	26.0
total H	35.0	total W	33.0	depth	26.5

Exceeds BIFMA Seating Durability Test to 750 lbs per chair
CAL 133, add \$134 List per chair



2201G
48 lbs



Pricing March 1, 2020
Discount 57.7% from List prices



MAS SIN 33721

2000 SERIES Lounge Seating

Separate Seat and Back Easy Access Hip Single Seater with arms

Standard Features

- Separate seat and back
- Fully welded 1.5" frame
- Frame in any Spectone color
- Glides
- Zippered removable covers
- 24" seat height, no seat pitch (level)
- Footrest which assists entering/exiting chair
- Available only as four-point
- Ships assembled
- Ships 1/carton 19 cu ft

Options

- Antibacterial and antimicrobial fabrics available
- Different fabric on seat and back at no upcharge
- CAL 133

Contact Spec Customer Service to railroad fabrics
(specify repeat info and yardage requirement will
be provided) and for repeats greater than 5" x 5"



Separate Seat and Back Easy Access Hip Single Seater with arms

COM 1.75 yds

1.0 yd COM per single seat

0.75 yd COM per single back

MODEL	COM	GR 1	GR 2	GR 3	GR 4	GR 5	GR 6
2231CS	998	1088	1120	1180	1269	1340	1428

Dimensions (inches)

seat H	24.0	seat W	22.0	arm H	30.25
total H	38.0	total W	25.0	depth	26.5

Exceeds BIFMA Seating Durability Test to 500 lbs per chair

CAL 133, add \$108 List per chair



2231CS
45 lbs



Pricing March 1, 2020
Discount 57.7% from List prices

spec™

MAS SIN 33721

2000 SERIES Lounge Seating

Freestanding Lounge Tables

Corner and Spacer Connecting Tables

Standard Features

- Tops in laminate or veneer
- Select from 15 standard laminates or choose any standard Wilsonart, Nevamar, Formica, Arborite and Pionite matte finish laminates at no upcharge
- Table tops available with PVC Flat edge (PVF) or Self edge (SE)
- 9 standard hardwood edge stains. Stain-to-match available at no upcharge.
- Frame in any Spectone color
- Glides
- Tops utilize NU Green earth friendly core

Options

- Non-standard laminates, contact Spec for pricing
- Custom size spacer tables for restricted spaces
- Other sizes may be available

Radius Corner Tables are recommended for open areas



Corner and Spacer Connecting Tables

Model	Laminate PVF/SE	Weight	Cu.Ft.
22RC/23RC 32 x 32 <i>Radius Corner Table</i>	704	31	2
22SC/23SC 32 x 32 <i>Square Corner Table</i>	704	32	2
22TC45/23TC45 19 x 23 <i>45 degree Corner Table</i>	542	26	2
22ST/23ST 21 x 24 <i>Spacer or End Table</i>	542	21	2

