



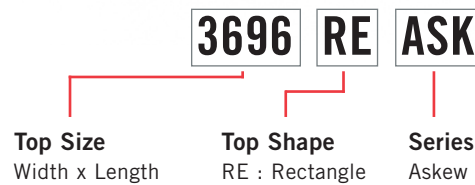
Pricing March 1, 2020  
Discount 57.7% from List prices



OPEN MARKET

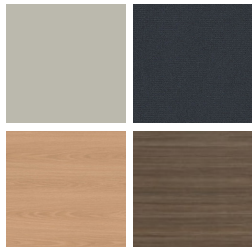


**PRODUCT CODE**



**FINISHES**

**LAMINATE**



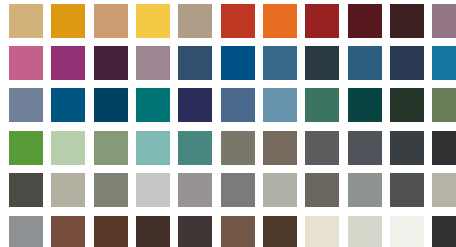
Select from 15 standard laminates or choose any standard Wilsonart, Nevamar, Formica, Arborite and Pionite matte finish laminates at no upcharge

**VENEER**



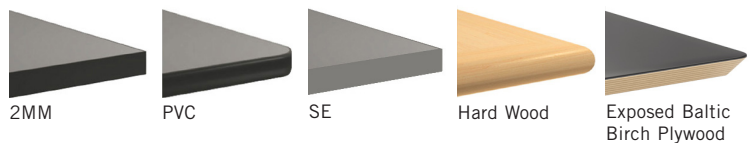
Select from one of our 9 standard wood stains or stain-to-match at no upcharge

**BASE**



Select from one of our 76 standard Spectone colors

**EDGE**



See Spectone Card or [specfurniture.com/materials/finishes](http://specfurniture.com/materials/finishes) for a complete list of finish options and colors.

**STANDARD FEATURES**

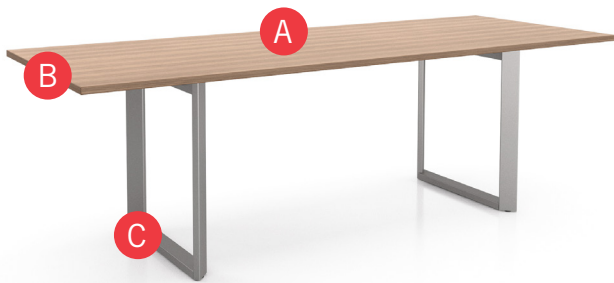
- End bases are 18" inset from the end of the table top, lengthwise.
- End bases skew outward. Center base on tables over 120" in length is symmetrical.
- Select from 15 standard laminates or choose any standard Wilsonart, Nevamar, Formica, Arborite and Pionite matte finish laminates at no upcharge. For other laminate please contact the factory for pricing.
- 9 standard veneer and hardwood edge stains. Stain-to-match available at no upcharge.
- Standard with leveling glides.
- Bases available in any Spectone color.
- Standard 30" table height.
- Standard 1" table top.

**OPTIONS**

- For Power & Data modules, please see Table Accessories Price List.
- Vertical Wire Manager magnetically attaches to any base, add \$ List each
- Radius corners.
- Other base heights may be available, please contact Factory.
- 2" built up edge table top available, contact Factory for pricing.

Toll Free: 1-888-761-7732

**HOW TO ORDER**



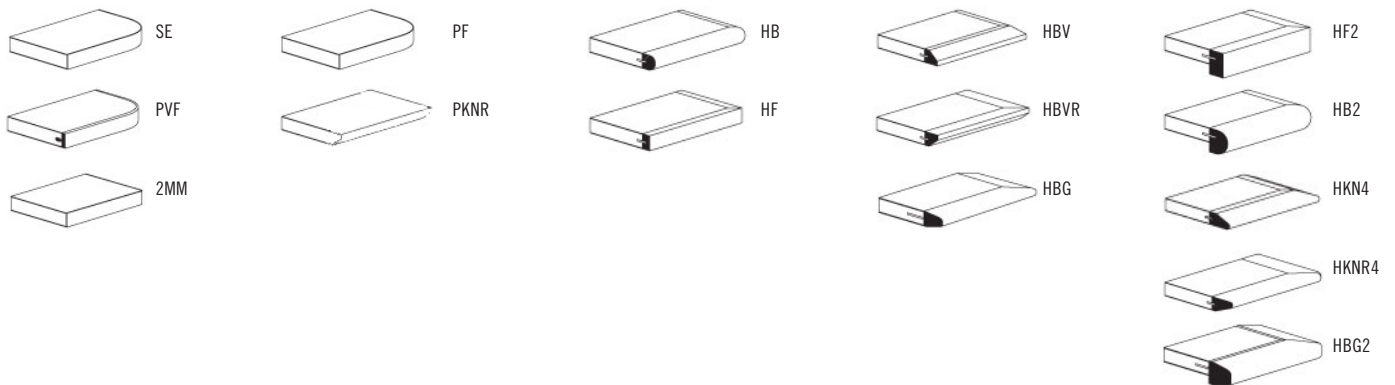
**Specify Top Size (Width x Length) and Shape**

- A** Specify Top Type and Finish  
*For Laminate Top: Manufacturer, Laminate Name & Code*  
*For Veneer Top: Wood Stain*
- B** Specify Edge Type, (for hardwood: Style), and Finish  
*PVC/2mm/Self Edge/Exposed Baltic Birch Plywood/Hardwood*
- C** Specify Base Style and Finish  
Optional: Power and Data Modules, Wire Management Solutions, Custom Solutions

| Top Size and Shape | Top Type and Finish             | Edge Type and Finish                   | Base Style and Finish |
|--------------------|---------------------------------|----------------------------------------|-----------------------|
| 36 x 96, Rectangle | Laminate, Arborite, Brown Sugar | Hardwood, HF, Custom Brown Sugar Stain | ASK, Silver           |



**EDGE PROFILES**



**STANDARD FEATURES**

- End bases are 18" inset from the end of the table top, lengthwise.
- End bases skew outward. Center base on tables over 120" in length is symmetrical.
- Select from 15 standard laminates or choose any standard Wilsonart, Nevamar, Formica, Arborite and Pionite matte finish laminates at no upcharge. For other laminate please contact the factory for pricing.
- 9 standard veneer and hardwood edge stains. Stain-to-match available at no upcharge.
- Standard with leveling glides.
- Bases available in any Spectone color.
- Standard 30" table height.
- Standard 1" table top.

**OPTIONS**

- For Power & Data modules, please see Table Accessories Price List.
- Vertical Wire Manager magnetically attaches to any base, add \$ List each
- Radius corners.
- Other base heights may be available, please contact Factory.
- 2" built up edge table top available, contact Factory for pricing.

# ASKEW TABLES BOARDROOM

| MODEL            | TABLETOPS<br><i>Number of Sections</i> | BASES       |             | TOP SPECIFICATIONS      |                                                  |                    |                            |                        |                            | LBS |
|------------------|----------------------------------------|-------------|-------------|-------------------------|--------------------------------------------------|--------------------|----------------------------|------------------------|----------------------------|-----|
|                  |                                        | <i>Code</i> | <i>Qty.</i> | <i>For Laminate Top</i> |                                                  |                    | <i>For Veneer Top</i>      |                        |                            |     |
|                  |                                        |             |             | SE<br>PVF<br>2MM        | HF<br>HB<br>PKNR <sup>1</sup><br>PF <sup>1</sup> | HBV<br>HBVR<br>HBG | HF2<br>HB2<br>HKN4<br>HBG2 | HF<br>HB<br>HBV<br>HBG | HF2<br>HB2<br>HKN4<br>HBG2 |     |
| <i>Rectangle</i> |                                        |             |             |                         |                                                  |                    |                            |                        |                            |     |
| 36 X 96RE        | 1                                      | ASK         | 2           | 3309                    | 4026                                             | 4206               | 4489                       | 4671                   | 5195                       | 139 |
| 36 X 108RE       | 1                                      | ASK         | 2           | 3442                    | 4116                                             | 4324               | 4632                       | 4863                   | 5456                       | 152 |
| 36 X 120RE       | 2                                      | ASK         | 2           | 3480                    | 4347                                             | 4568               | 4919                       | 5142                   | 5818                       | 165 |
| 36 X 144RE       | 2                                      | ASK         | 3           | 4830                    | 5770                                             | 6011               | 6571                       | 6841                   | 7644                       | 198 |
| 36 X 168RE       | 2                                      | ASK         | 3           | 5296                    | 6518                                             | 6832               | 7559                       | 7910                   | 8954                       | 221 |
| 36 X 192RE       | 2                                      | ASK         | 3           | 5527                    | 6960                                             | 7320               | 7885                       | 8249                   | 9298                       | 245 |
| 36 X 216RE       | 2                                      | ASK         | 3           | 5793                    | 7141                                             | 7557               | 8172                       | 8634                   | 9820                       | 268 |
| 42 X 96RE        | 1                                      | ASK         | 2           | 3603                    | 4513                                             | 4759               | 5008                       | 5376                   | 6088                       | 154 |
| 42 X 108RE       | 1                                      | ASK         | 2           | 3797                    | 4890                                             | 5149               | 5708                       | 5790                   | 6564                       | 168 |
| 42 X 120RE       | 2                                      | ASK         | 2           | 3920                    | 5095                                             | 5374               | 5974                       | 6062                   | 6895                       | 183 |
| 42 X 144RE       | 2                                      | ASK         | 3           | 5408                    | 7093                                             | 7460               | 8031                       | 7896                   | 8897                       | 219 |
| 42 X 168RE       | 2                                      | ASK         | 3           | 5912                    | 7609                                             | 8027               | 8824                       | 8640                   | 9804                       | 246 |
| 42 X 192RE       | 2                                      | ASK         | 3           | 6235                    | 8444                                             | 8952               | 10089                      | 9701                   | 11094                      | 274 |
| 42 X 216RE       | 2                                      | ASK         | 3           | 6853                    | 9040                                             | 9599               | 10809                      | 10441                  | 12010                      | 301 |
| 48 X 96RE        | 1                                      | ASK         | 2           | 3603                    | 4513                                             | 4759               | 5008                       | 5376                   | 6088                       | 168 |
| 48 X 108RE       | 1                                      | ASK         | 2           | 3818                    | 4911                                             | 5170               | 5728                       | 5810                   | 6585                       | 185 |
| 48 X 120RE       | 2                                      | ASK         | 2           | 3941                    | 5116                                             | 5394               | 5995                       | 6083                   | 6916                       | 201 |
| 48 X 144RE       | 2                                      | ASK         | 3           | 5429                    | 7114                                             | 7481               | 8052                       | 7916                   | 8918                       | 241 |
| 48 X 168RE       | 2                                      | ASK         | 3           | 5933                    | 7629                                             | 8048               | 8845                       | 8661                   | 9825                       | 272 |
| 48 X 192RE       | 2                                      | ASK         | 3           | 6256                    | 8465                                             | 8973               | 10110                      | 9722                   | 11114                      | 302 |
| 48 X 216RE       | 2                                      | ASK         | 3           | 6873                    | 9060                                             | 9620               | 10830                      | 10461                  | <b>12031</b>               | 333 |



<sup>1</sup> Exposed Baltic Birch plywood edge (PKNR, PF) can only be specified on square tops up to 47-1/2" x 95-1/2". Clear finish only.



3696 RE ASK



48144 RE ASK



WIRE MANAGER

### STANDARD FEATURES

- End bases are 18" inset from the end of the table top, lengthwise.
- End bases skew outward. Center base on tables over 120" in length is symmetrical.
- Select from 15 standard laminates or choose any standard Wilsonart, Nevamar, Formica, Arborite and Pionite matte finish laminates at no upcharge. For other laminate please contact the factory for pricing.
- 9 standard veneer and hardwood edge stains. Stain-to-match available at no upcharge.
- Standard with leveling glides.
- Bases available in any Spectone color.
- Standard 30" table height.
- Standard 1" table top.

### OPTIONS

- For Power & Data modules, please see Table Accessories Price List.
- Vertical Wire Manager magnetically attaches to any base, add \$156 List each
- Radius corners.
- Other base heights may be available, please contact Factory.
- 2" built up edge table top available, contact Factory for pricing.

### HOW TO ORDER

1. Select Model
2. Select Base
3. Select Edge Style
4. Select Options
5. Select Top Finish
6. Select Edge Finish
7. Select Base Finish

**Example:** 4296RE - ASK - PVF -





Pricing March 1, 2020  
Discount 57.7% from List prices



OPEN MARKET

# ASKEW TABLES BOARDROOM



| MODEL            | TABLETOPS          |      | BASES |                  | TOP SPECIFICATIONS |                    |                                     |                                |                                     |     | LBS |
|------------------|--------------------|------|-------|------------------|--------------------|--------------------|-------------------------------------|--------------------------------|-------------------------------------|-----|-----|
|                  | Number of Sections | Code | Qty.  | For Laminate Top |                    |                    | For Veneer Top                      |                                |                                     |     |     |
|                  |                    |      |       | SE<br>PVF<br>2MM | HF<br>HB           | HBV<br>HBVR<br>HBG | HF2<br>HB2<br>HKN4<br>HKNR4<br>HBG2 | HF<br>HB<br>HBV<br>HBVR<br>HBG | HF2<br>HB2<br>HKN4<br>HKNR4<br>HBG2 |     |     |
| <i>Rectangle</i> |                    |      |       |                  |                    |                    |                                     |                                |                                     |     |     |
| 60 X 96RE        | 1                  | ASK  | 2     | 5283             | 6458               | 6736               | 7337                                | 7425                           | 8258                                | 203 |     |
| 60 X 108RE       | 1                  | ASK  | 2     | 5610             | 7244               | 7601               | 8152                                | 8021                           | 8992                                | 223 |     |
| 60 X 120RE       | 2                  | ASK  | 2     | 5767             | 7524               | 7908               | 8500                                | 8359                           | 9404                                | 243 |     |
| 60 X 144RE       | 2                  | ASK  | 3     | 7978             | 10087              | 10546              | 11257                               | 11089                          | 12342                               | 292 |     |
| 60 X 168RE       | 2                  | ASK  | 3     | 8428             | 10887              | 11421              | 12253                               | 12056                          | 13516                               | 330 |     |
| 60 X 192RE       | 2                  | ASK  | 3     | 9059             | 12007              | 12646              | 13644                               | 13409                          | 15163                               | 369 |     |
| 60 X 216RE       | 2                  | ASK  | 3     | 9528             | 12847              | 13569              | 14689                               | 14424                          | <b>16394</b>                        | 407 |     |



6096 RE ASK



WIRE MANAGER

### STANDARD FEATURES

- End bases are 18" inset from the end of the table top, lengthwise.
- End bases skew outward. Center base on tables over 120" in length is symmetrical.
- Select from 15 standard laminates or choose any standard Wilsonart, Nevamar, Formica, Arborite and Pionite matte finish laminates at no upcharge. For other laminate please contact the factory for pricing.
- 9 standard veneer and hardwood edge stains. Stain-to-match available at no upcharge.
- Standard with leveling glides.
- Bases available in any Spectone color.
- Standard 30" table height.
- Standard 1" table top.

### OPTIONS

- For Power & Data modules, please see Table Accessories Price List.
- Vertical Wire Manager magnetically attaches to any base, add \$156 List each
- Radius corners.
- Other base heights may be available, please contact Factory.
- 2" built up edge table top available, contact Factory for pricing.

### HOW TO ORDER

1. Select Model
2. Select Base
3. Select Edge Style
4. Select Options
5. Select Top Finish
6. Select Edge Finish
7. Select Base Finish

**Example:** 6096RE - ASK - PVF -



Toll Free: 1-888-761-7732