

BEHAVIORAL HEALTH & HEAVY DUTY Specialty Seating



PRODUCT CODE

4201M HD

Product Code

Specification

HD: Heavy Duty*



*The code for our heavy duty seating options featured in the pages below is the same as a regular model of the chair you are specifying. By adding the letters "HD" at the end of the product code, it lets us know the product is intended for a behavioral health environment and the features below will automatically be specified.

FEATURES

Tamper-Proof



Weighted



LOCTITE®-secured Glides



Secured Zippers



Springless Seat Cushion



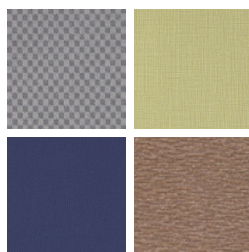
FINISHES

FRAME



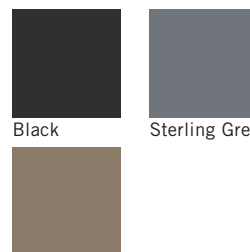
Select from one of our 76 standard Spectone colors

FABRIC



Select fabrics from one of our textile partners

ARMS



Black

Sterling Grey

Taupe



BEHAVIORAL HEALTH & HEAVY DUTY Specialty Seating

CALVIN HD

Standard Features

- Separate seat and back
- Polyurethane arms
- Fully welded
- Added weight, Sled base
- Frame in any Spectone color
- Injection molded plastic glides secured with LOCTITE®
- Tamperproof hardware
- Ships assembled
- Ships 1/carton 15 cu ft, bariatric ships 1/carton 20 cu ft

Options

- Polyurethane arms are available in Black, Sterling Grey and Taupe (RAL 7006)
- Corian arms available in Antarctica, Bisque, Cameo White, Glacier White, or Linen. Custom colors available, contact Spec for pricing
- CAL 133

Contact Spec Customer Service to railroad fabrics (specify repeat info and yardage requirement will be provided) and for repeats greater than 5" x 5"



Calvin HD Single Seater with arms

COM 1.75 yds
 0.75 yd COM per single seat
 1.0 yd COM per single back

MODEL	COM	GR 1	GR 2	GR 3	GR 4	GR 5	GR 6
8101MHD	1290	1382	1413	1477	1570	1639	1732

Dimensions (inches)

	seat H	18.0	seat W	21.0	arm H	25.0
total H	33.75	total W	25.0	depth	26.0	

Meets BIFMA Seating Durability Test to 500 lbs per chair
 CAL 133, add \$114 List per chair
 For Corian arms add suffix C and **\$280**



8101MHD
64 lbs

Calvin HD Bariatric with arms

COM 3.0 yds
 1.5 yd COM per single seat
 1.5 yd COM per single back

MODEL	COM	GR 1	GR 2	GR 3	GR 4	GR 5	GR 6
8101GHD	1581	1740	1793	1902	2061	2180	2339

Dimensions (inches)

	seat H	18.0	seat W	30.0	arm H	25.0
total H	33.75	total W	34.0	depth	26.0	

Meets BIFMA Seating Durability Test to 750 lbs per seat
 CAL 133, add \$138 List per chair
 For Corian arms add suffix C and **\$280**



8101GHD
74 lbs



BEHAVIORAL HEALTH & HEAVY DUTY Specialty Seating

COMPANION HD

Standard Features

- Separate seat and back
- Polyurethane arms
- Fully welded 1.75" frame
- Added weight, Sled base
- Frame in any Spectone color
- Steel glides secured with LOCTITE®
- Tamperproof hardware
- Zippered covers glued shut, pulls removed
- Ships assembled
- Medium Back ships 1/carton 15 cu ft
- Highback ships 1/carton 19 cu ft

Options

- Polyurethane arms are available in Black, Sterling Grey and Taupe (RAL 7006)
- Floor mounting glides, add \$50 List/chair
- CAL 133

Contact Spec Customer Service to railroad fabrics (specify repeat info and yardage requirement will be provided) and for repeats greater than 5" x 5"



Companion HD Medium Back armless – Sled Base

COM 2.0 yds
1.0 yd COM per single seat
1.0 yd COM per single back

MODEL	COM	GR 1	GR 2	GR 3	GR 4	GR 5	GR 6
4101MHD	1141	1242	1275	1344	1444	1520	1623

Dimensions (inches)

seat H	18.0	seat W	21.0				
total H	32.5	total W	25.0	depth	27.0		

Meets BIFMA Seating Durability Test to 500 lbs per chair
CAL 133, add \$102 List per chair



4101MHD
65 lbs

Companion HD Medium Back with arms – Sled Base

COM 2.0 yds
1.0 yd COM per single seat
1.0 yd COM per single back

MODEL	COM	GR 1	GR 2	GR 3	GR 4	GR 5	GR 6
4201MHD	1315	1415	1451	1517	1618	1695	1795

For steel arms add suffix S and \$73

Dimensions (inches)

seat H	18.0	seat W	21.0	arm H	27.0		
total H	32.5	total W	26.0	depth	27.0		

Meets BIFMA Seating Durability Test to 500 lbs per seat
CAL 133, add \$102 List per chair



4201MHD
65 lbs

BEHAVIORAL HEALTH & HEAVY DUTY Specialty Seating

COMPANION HD

Standard Features

- Separate seat and back
- Polyurethane arms
- Fully welded 1.75" frame
- Added weight, Sled base
- Frame in any Spectone color
- Steel glides secured with LOCTITE®
- Tamperproof hardware
- Zippered covers glued shut, pulls removed
- Ships assembled
- Medium Back ships 1/carton 15 cu ft
- Highback ships 1/carton 19 cu ft

Options

- Polyurethane arms are available in Black, Sterling Grey and Taupe (RAL 7006)
- Floor mounting glides, add \$50 List/chair
- CAL 133

Contact Spec Customer Service to railroad fabrics (specify repeat info and yardage requirement will be provided) and for repeats greater than 5" x 5"



Companion HD Highback with arms – Sled Base

COM 2.25 yds
 1.0 yd COM per single seat
 1.25 yd COM per single back

MODEL	COM	GR 1	GR 2	GR 3	GR 4	GR 5	GR 6
4201HHD	1370	1480	1517	1591	1704	1788	1899

For steel arms add suffix S and \$73

Dimensions (inches)

seat H	18.0	seat W	21.0	arm H	27.0
total H	45.0	total W	26.0	depth	27.0

Meets BIFMA Seating Durability Test to 500 lbs per seat
 CAL 133, add \$126 List per chair



4201HHD
71 lbs

Companion HD Bariatric with arms – Sled Base

COM 3.25 yds
 1.5 yd COM per single seat
 1.75 yd COM per single back

MODEL	COM	GR 1	GR 2	GR 3	GR 4	GR 5	GR 6
4201GHD	1604	1757	1809	1909	2059	2175	2328

For steel arms add suffix S and \$73

Dimensions (inches)

seat H	18.0	seat W	30.0	arm H	27.0
total H	32.5	total W	35.0	depth	27.0

Meets BIFMA Seating Durability Test to 750 lbs per seat
 CAL 133, add \$154 List per chair



4201GHD
78 lbs



BEHAVIORAL HEALTH & HEAVY DUTY Specialty Seating

COOPER DWIGHT HD

Standard Features

- Separate seat and back
- Laminate or upholstered side panels on inside and outside of arm in various combinations
- Upholstered side panels can match or contrast seat/back
- Select from 15 standard laminates or choose any standard Wilsonart, Nevamar, Formica, Arborite and Pionite matte finish laminates at no upcharge.
- Fully welded frame with 1.625" steel legs and 1.25" steel tubular sleds
- Frame in any Spectone color
- Steel glides secured with LOCTITE®
- Replaceable seats
- No protruding legs or hardware
- Tamper proof fastenings
- Ships assembled, 1/carton 15 cu ft

Options

- Wood or polyurethane arm caps, in flat (WF or PF) or rounded (WR or PR) profile
- Wood arm caps in Beech, in any of 9 standard stains or stain-to-match at no upcharge
- Round polyurethane arm caps available in Black, Sterling Grey and Taupe (RAL 7006)
- Flat polyurethane arm caps available in Black only
- KYDEX® flat arms available in Black (B) or Taupe RAL 7006 (T) or Sterling Grey (G)
- Floor mounting straps available, call Customer Service
- Additional weight may be available, call Customer Service
- Antibacterial and antimicrobial fabrics available
- Different fabric on seat and back at no upcharge
- CAL 133

Contact Spec Customer Service to railroad fabrics (specify repeat info and yardage requirement will be provided) and for repeats greater than 5" x 5"



Cooper Dwight HD Single Seater with arms

COM 1.75 yds

0.75 yd COM per single seat / 1.0 yd COM per single back

MODEL	COM	GR 1	GR 2	GR 3	GR 4	GR 5	GR 6
6101MHD-LL	1250	1354	1388	1460	1566	1648	1756

Side panel – laminated, outside and inside

CAL 133, add \$114 List per chair



6101MHD-LL
75 lbs

COM 2.5 yds

0.75 yd COM per single seat / 1.0 yd COM per single back / 0.375 yd COM per panel

MODEL	COM	GR 1	GR 2	GR 3	GR 4	GR 5	GR 6
6101MHD-LU	1316	1461	1509	1610	1758	1872	2023

Side panel – laminated, outside, upholstered inside

CAL 133, add \$193 List per chair

COM 2.5 yds

0.75 yd COM per single seat / 1.0 yd COM per single back / 0.375 yd COM per panel

MODEL	COM	GR 1	GR 2	GR 3	GR 4	GR 5	GR 6
6101MHD-UL	1316	1461	1509	1610	1758	1872	2023

Side panel – upholstered outside, laminated inside

CAL 133, add \$193 List per chair

COM 3.25 yds

0.75 yd COM per single seat / 1.0 yd COM per single back / 0.75 yd COM per panel

MODEL	COM	GR 1	GR 2	GR 3	GR 4	GR 5	GR 6
6101MHD-UU	1350	1537	1598	1728	1919	2065	2260

Side panel – upholstered, outside and inside

CAL 133, add \$277 List per chair

Dimensions (inches)

seat H	18.0	seat W	21.0	arm H	25.0
total H	33.75	total W	25.25	depth	25.0

For KYDEX® flat arms add suffix K and \$242

Dynamic load tested to 500 lbs per chair

BEHAVIORAL HEALTH & HEAVY DUTY Specialty Seating

COOPER DWIGHT HD

Standard Features

- Separate seat and back
- Laminate or upholstered side panels on inside and outside of arm in various combinations
- Upholstered side panels can match or contrast seat/back
- Select from 15 standard laminates or choose any standard Wilsonart, Nevamar, Formica, Arborite and Pionite matte finish laminates at no upcharge.
- Fully welded frame with 1.625" steel legs and 1.25" steel tubular sleds
- Frame in any Spectone color
- Steel glides secured with LOCTITE®
- Replaceable seats
- No protruding legs or hardware
- Tamper proof fastenings
- Ships assembled, 1/carton 15 cu ft

Options

- Wood or polyurethane arm caps, in flat (WF or PF) or rounded (WR or PR) profile
- Wood arm caps in Beech, in any of 9 standard stains or stain-to-match at no upcharge
- Round polyurethane arm caps available in Black, Sterling Grey and Taupe (RAL 7006)
- Flat polyurethane arm caps available in Black only
- KYDEX® flat arms available in Black (B) or Taupe RAL 7006 (T) or Sterling Grey (G)
- Floor mounting straps available, call Customer Service
- Additional weight may be available, call Customer Service
- Antibacterial and antimicrobial fabrics available
- Different fabric on seat and back at no upcharge
- CAL 133

Contact Spec Customer Service to railroad fabrics (specify repeat info and yardage requirement will be provided) and for repeats greater than 5" x 5"

Cooper Dwight HD Single Seater with no arms

COM 1.75 yds

0.75 yd COM per single seat / 1.0 yd COM per single back

MODEL	COM	GR 1	GR 2	GR 3	GR 4	GR 5	GR 6
6101MHD-LL-N	1212	1316	1350	1422	1527	1610	1716

Side panel – laminated, outside and inside

CAL 133, add \$114 List per chair

COM 2.5 yds

0.75 yd COM per single seat / 1.0 yd COM per single back / 0.375 yd COM per panel

MODEL	COM	GR 1	GR 2	GR 3	GR 4	GR 5	GR 6
6101MHD-LU-N	1267	1401	1444	1537	1673	1778	1917

Side panel – laminated, outside, upholstered inside

CAL 133, add \$193 List per chair

COM 2.5 yds

0.75 yd COM per single seat / 1.0 yd COM per single back / 0.375 yd COM per panel

MODEL	COM	GR 1	GR 2	GR 3	GR 4	GR 5	GR 6
6101MHD-UL-N	1267	1401	1444	1537	1673	1778	1917

Side panel – upholstered outside, laminated inside

CAL 133, add \$193 List per chair

COM 3.25 yds

0.75 yd COM per single seat / 1.0 yd COM per single back / 0.75 yd COM per panel

MODEL	COM	GR 1	GR 2	GR 3	GR 4	GR 5	GR 6
6101MHD-UU-N	1301	1464	1518	1631	1797	1926	2095

Side panel – upholstered, outside and inside

CAL 133, add \$277 List per chair

Dimensions (inches)

seat H	18.0	seat W	21.0	arm H	20.0
total H	33.75	total W	25.25	depth	25.0

For KYDEX® flat arms add suffix K and \$242

Dynamic load tested to 500 lbs per chair



6101MHD-LL-N
70 lbs



BEHAVIORAL HEALTH & HEAVY DUTY Specialty Seating

DIGNITY

Standard Features

- Separate seat and back
- Self-skinned polyurethane perimeter arms
- Upholstered side panels can match or contrast seat/back
- Laminate or upholstered side panels on inside and outside of arm
- Select from 15 standard laminates or choose any standard Wilsonart, Nevamar, Formica, Arborite and Pionite matte finish laminates at no upcharge.
- No protruding legs or hardware
- Tamper proof fastenings
- Non-removable steel levelling glides
- Ships assembled
- Ships 1/carton 15 cu ft

Contact Spec Customer Service to railroad fabrics (specify repeat info and yardage requirement will be provided) and for repeats greater than 5" x 5"

Options

- Specify frame finish, Black (B), Sterling Grey (G) or Taupe RAL 7006 (T)
- Add up to 20 lbs of additional weight per seat, add \$140 List per seat
- Non-standard laminates, contact Spec for pricing
- Antibacterial and antimicrobial fabrics available
- Floor mounting straps available, call Customer Service
- Connecting and freestanding tables
- CAL 133
- Elimination of separated seat and back available with either solid or perforated seat pan, call Customer Service



Single Seater with arms

COM 1.75 yds

0.75 yd COM per single seat / 1.0 yd COM per single back

MODEL	COM	GR 1	GR 2	GR 3	GR 4	GR 5	GR 6
4501M-LL	1296	1388	1421	1483	1576	1646	1740

Arm panel – laminated, outside and inside

CAL 133, add \$114 List per chair



4501M
107 lbs

COM 2.75 yds

0.75 yd COM per single seat / 1.0 yd COM per single back / .5 yd COM per panel

MODEL	COM	GR 1	GR 2	GR 3	GR 4	GR 5	GR 6
4501M-LU	1394	1539	1588	1686	1832	1942	2088

Arm panel – laminated, outside, upholstered inside

CAL 133, add \$193 List per chair

COM 2.75 yds

0.75 yd COM per single seat / 1.0 yd COM per single back / .5 yd COM per panel

MODEL	COM	GR 1	GR 2	GR 3	GR 4	GR 5	GR 6
4501M-UL	1394	1539	1588	1686	1832	1942	2088

Arm panel – upholstered outside, laminated inside

CAL 133, add \$193 List per chair

COM 3.75 yds

0.75 yd COM per single seat / 1.0 yd COM per single back / 1.0 yd COM per panel

MODEL	COM	GR 1	GR 2	GR 3	GR 4	GR 5	GR 6
4501M-UU	1487	1691	1754	1889	2087	2238	2439

Arm panel – upholstered, outside and inside

CAL 133, add \$277 List per chair

Dimensions (inches)

seat H	18.0	seat W	23.0	arm H	25.25
total H	32.75	total W	29.0	depth	29.75

Exceeds BIFMA Seating Durability Test to 500 lbs per chair



BEHAVIORAL HEALTH & HEAVY DUTY Specialty Seating

DIGNITY

Standard Features

- Separate seat and back
- Self-skinned polyurethane perimeter arms
- Upholstered side panels can match or contrast seat/back
- Laminate or upholstered side panels on inside and outside of arm
- Select from 15 standard laminates or choose any standard Wilsonart, Nevamar, Formica, Arborite and Pionite matte finish laminates at no upcharge.
- No protruding legs or hardware
- Tamper proof fastenings
- Non-removable steel levelling glides
- Ships assembled
- Ships 1/carton 26 cu ft

Contact Spec Customer Service to railroad fabrics (specify repeat info and yardage requirement will be provided) and for repeats greater than 5" x 5"

Options

- Specify frame finish, Black (B), Sterling Grey (G) or Taupe RAL 7006 (T)
- Add up to 20 lbs of additional weight per seat, add \$140 List per seat
- Non-standard laminates, contact Spec for pricing
- Antibacterial and antimicrobial fabrics available
- Floor mounting straps available, call Customer Service
- Connecting and freestanding tables
- CAL 133
- Elimination of separated seat and back available with either solid or perforated seat pan, call Customer Service



Two Seater with outside arms

COM 3.5 yds

0.75 yd COM per single seat / 1.0 yd COM per single back

MODEL	COM	GR 1	GR 2	GR 3	GR 4	GR 5	GR 6
4502M-LL	1877	2065	2127	2252	2437	2576	2765

Arm panel – laminated, outside and inside

CAL 133, add \$228 List per two seater

COM 4.5 yds

0.75 yd COM per single seat / 1.0 yd COM per single back / .5 yd COM per panel

MODEL	COM	GR 1	GR 2	GR 3	GR 4	GR 5	GR 6
4502M-LU	1973	2215	2295	2454	2694	2874	3115

Arm panel – laminated, outside, upholstered inside

CAL 133, add \$307 List per two seater

COM 4.5 yds

0.75 yd COM per single seat / 1.0 yd COM per single back / .5 yd COM per panel

MODEL	COM	GR 1	GR 2	GR 3	GR 4	GR 5	GR 6
4502M-UL	1973	2215	2295	2454	2694	2874	3115

Arm panel – upholstered outside, laminated inside

CAL 133, add \$307 List per two seater

COM 5.5 yds

0.75 yd COM per single seat / 1.0 yd COM per single back / 1.0 yd COM per panel

MODEL	COM	GR 1	GR 2	GR 3	GR 4	GR 5	GR 6
4502M-UU	2071	2367	2461	2658	2949	3170	3466

Arm panel – upholstered, outside and inside

CAL 133, add \$386 List per two seater

Dimensions (inches)

seat H	18.0	seat W	46.0	arm H	25.25
total H	32.75	total W	52.0	depth	29.75

Exceeds BIFMA Seating Durability Test to 750 lbs per two seater



4502M
152 lbs



BEHAVIORAL HEALTH & HEAVY DUTY Specialty Seating

DIGNITY

Standard Features

- Separate seat and back
- Self-skinned polyurethane perimeter arms
- Upholstered side panels can match or contrast seat/back
- Laminate or upholstered side panels on inside and outside of arm
- Select from 15 standard laminates or choose any standard Wilsonart, Nevamar, Formica, Arborite and Pionite matte finish laminates at no upcharge.
- No protruding legs or hardware
- Tamper proof fastenings
- Non-removable steel levelling glides
- Ships assembled
- Ships 1/carton 39 cu ft

Contact Spec Customer Service to railroad fabrics (specify repeat info and yardage requirement will be provided) and for repeats greater than 5" x 5"

Options

- Specify frame finish, Black (B), Sterling Grey (G) or Taupe RAL 7006 (T)
- Add up to 20 lbs of additional weight per seat, add \$140 List per seat
- Non-standard laminates, contact Spec for pricing
- Antibacterial and antimicrobial fabrics available
- Floor mounting straps available, call Customer Service
- Connecting and freestanding tables
- CAL 133
- Elimination of separated seat and back available with either solid or perforated seat pan, call Customer Service



Three Seater with outside arms

COM 5.25 yds

0.75 yd COM per single seat / 1.0 yd COM per single back

MODEL	COM	GR 1	GR 2	GR 3	GR 4	GR 5	GR 6
4503M-LL	2460	2740	2834	3020	3300	3511	3791

Arm panel – laminated, outside and inside

CAL 133, add \$342 List per three seater

COM 6.25 yds

0.75 yd COM per single seat / 1.0 yd COM per single back / .5 yd COM per panel

MODEL	COM	GR 1	GR 2	GR 3	GR 4	GR 5	GR 6
4503M-LU	2556	2892	3002	3225	3557	3805	4141

Arm panel – laminated, outside, upholstered inside

CAL 133, add \$421 List per three seater

COM 6.25 yds

0.75 yd COM per single seat / 1.0 yd COM per single back / .5 yd COM per panel

MODEL	COM	GR 1	GR 2	GR 3	GR 4	GR 5	GR 6
4503M-UL	2556	2892	3002	3225	3557	3805	4141

Arm panel – upholstered outside, laminated inside

CAL 133, add \$421 List per three seater

COM 7.25 yds

0.75 yd COM per single seat / 1.0 yd COM per single back / 1.0 yd COM per panel

MODEL	COM	GR 1	GR 2	GR 3	GR 4	GR 5	GR 6
4503M-UU	2652	3041	3169	3426	3812	4101	4492

Arm panel – upholstered, outside and inside

CAL 133, add \$500 List per three seater

Dimensions (inches)

seat H	18.0	seat W	69.0	arm H	25.25
total H	32.75	total W	75.0	depth	29.75

Exceeds BIFMA Seating Durability Test to 1000 lbs per three seater



4503M
197 lbs



BEHAVIORAL HEALTH & HEAVY DUTY Specialty Seating

DIGNITY

Standard Features

- Separate seat and back
- Self-skinned polyurethane perimeter arms
- Upholstered side panels can match or contrast seat/back
- Laminate or upholstered side panels on inside and outside of arm
- Select from 15 standard laminates or choose any standard Wilsonart, Nevamar, Formica, Arborite and Pionite matte finish laminates at no upcharge.
- No protruding legs or hardware
- Tamper proof fastenings
- Non-removable steel levelling glides
- Ships assembled
- Ships 1/carton 20 cu ft

Contact Spec Customer Service to railroad fabrics (specify repeat info and yardage requirement will be provided) and for repeats greater than 5" x 5"

Options

- Specify frame finish, Black (B), Sterling Grey (G) or Taupe RAL 7006 (T)
- Add up to 20 lbs of additional weight per seat, add \$140 List per seat
- Non-standard laminates, contact Spec for pricing
- Antibacterial and antimicrobial fabrics available
- Floor mounting straps available, call Customer Service
- Connecting and freestanding tables
- CAL 133
- Elimination of separated seat and back available with either solid or perforated seat pan, call Customer Service



Bariatric Single Seater with arms

COM 3.25 yds

1.5 yd COM per single seat / 1.75 yd COM per single back

MODEL	COM	GR 1	GR 2	GR 3	GR 4	GR 5	GR 6
4501G-LL	1607	1783	1840	1955	2128	2259	2434

Arm panel – laminated, outside and inside

CAL 133, add \$154 List per chair



4501G
116 lbs

COM 4.25 yds

1.5 yd COM per single seat / 1.75 yd COM per single back / .5 yd COM per panel

MODEL	COM	GR 1	GR 2	GR 3	GR 4	GR 5	GR 6
4501G-LU	1704	1932	2006	2158	2384	2553	2783

Arm panel – laminated, outside, upholstered inside

CAL 133, add \$233 List per chair

COM 4.25 yds

1.5 yd COM per single seat / 1.75 yd COM per single back / .5 yd COM per panel

MODEL	COM	GR 1	GR 2	GR 3	GR 4	GR 5	GR 6
4501G-UL	1704	1932	2006	2158	2384	2553	2783

Arm panel – upholstered outside, laminated inside

CAL 133, add \$233 List per chair

COM 5.25 yds

1.5 yd COM per single seat / 1.75 yd COM per single back / 1.0 yd COM per panel

MODEL	COM	GR 1	GR 2	GR 3	GR 4	GR 5	GR 6
4501G-UU	1802	2083	2176	2363	2643	2851	3132

Arm panel – upholstered, outside and inside

CAL 133, add \$312 List per chair

Dimensions (inches)

seat H	18.0	seat W	30.25	arm H	25.25
total H	32.75	total W	36.25	depth	29.75

Exceeds BIFMA Seating Durability Test to 750 lbs per chair

BEHAVIORAL HEALTH & HEAVY DUTY Specialty Seating DIGNITY

Standard Features

- Black finish only
- 6" soft wheel casters
- Standard Dolly holds 1 single seat chair
- Ships 1/carton, 17 cu. ft.
- Ships assembled



Dignity - Dolly

Description	Model	Price	Weight
Single Seat Dolly	DIGN-99	505	12lb

Dimensions (inches)

height	39.0
width	23.0
depth	30.0





BEHAVIORAL HEALTH & HEAVY DUTY Specialty Seating

DIGNITY2

Standard Features

- Separate seat and back
- Arm caps available in wood, or polyurethane
- Laminate or upholstered side panels on inside and outside of arm in various combinations
- Upholstered side panels can match or contrast seat/back
- Select from 15 standard laminates or choose any standard Wilsonart, Nevamar, Formica, Arborite and Pionite matte finish laminates at no upcharge.
- Sculpted steel leg in any Spectone finish
- No protruding legs or hardware
- Tamper proof fastenings
- Non-removable steel levelling glides
- Ships assembled
- Ships 1/carton 15 cu ft

Options

- Polyurethane arm caps available in Black (B) or Taupe RAL 7006 (T) or Sterling Grey (G)
- For wood arm caps, select from 9 standard stains, or stain-to-match at no upcharge
- KYDEX® arm caps available in Black (B) or Taupe RAL 7006 (T) or Sterling Grey (G)
- Thermofoil side panels on inside and outside of arm, call Customer Service for pricing and finishes
- Add up to 20 lbs of additional weight per seat, add \$140 List per seat
- Non-standard laminates, contact Spec for pricing
- Antibacterial and antimicrobial fabrics available
- Floor mounting straps available, call Customer Service
- Connecting and freestanding tables
- CAL 133
- Elimination of separated seat and back available with either solid or perforated seat pan, call Customer Service

Contact Spec Customer Service to railroad fabrics (specify repeat info and yardage requirement will be provided) and for repeats greater than 5" x 5"

Single Seater with arms

COM 1.75 yds
0.75 yd COM per single seat / 1.0 yd COM per single back

MODEL	COM	GR 1	GR 2	GR 3	GR 4	GR 5	GR 6
4601M-LL	1296	1388	1421	1483	1576	1646	1740

Side panel – laminated, outside and inside
CAL 133, add \$114 List per chair

COM 2.75 yds
0.75 yd COM per single seat / 1.0 yd COM per single back / .5 yd COM per panel

MODEL	COM	GR 1	GR 2	GR 3	GR 4	GR 5	GR 6
4601M-LU	1394	1539	1588	1686	1832	1942	2088

Side panel – laminated, outside, upholstered inside
CAL 133, add \$193 List per chair

COM 2.75 yds
0.75 yd COM per single seat / 1.0 yd COM per single back / .5 yd COM per panel

MODEL	COM	GR 1	GR 2	GR 3	GR 4	GR 5	GR 6
4601M-UL	1394	1539	1588	1686	1832	1942	2088

Side panel – upholstered outside, laminated inside
CAL 133, add \$193 List per chair

COM 3.75 yds
0.75 yd COM per single seat / 1.0 yd COM per single back / 1.0 yd COM per panel

MODEL	COM	GR 1	GR 2	GR 3	GR 4	GR 5	GR 6
4601M-UU	1487	1691	1754	1889	2087	2238	2439

Side panel – upholstered, outside and inside
CAL 133, add \$277 List per chair

Dimensions (inches)

seat H	18.0	seat W	23.0	arm H	26.0
total H	31.75	total W	28.5	depth	30.0

For KYDEX® arms add suffix K and \$264
Dynamic load tested to 500 lbs per chair



4601M
94 lbs



BEHAVIORAL HEALTH & HEAVY DUTY Specialty Seating

DIGNITY2

Standard Features

- Separate seat and back
- Arm caps available in wood, or polyurethane
- Laminate or upholstered side panels on inside and outside of arm in various combinations
- Upholstered side panels can match or contrast seat/back
- Select from 15 standard laminates or choose any standard Wilsonart, Nevamar, Formica, Arborite and Pionite matte finish laminates at no upcharge.
- Sculpted steel leg in any Spectone finish
- No protruding legs or hardware
- Tamper proof fastenings
- Non-removable steel levelling glides
- Ships assembled
- Ships 1/carton 15 cu ft

Options

- Polyurethane arm caps available in Black (B) or Taupe RAL 7006 (T) or Sterling Grey (G)
- For wood arm caps, select from 9 standard stains, or stain-to-match at no upcharge
- KYDEX® arm caps available in Black (B) or Taupe RAL 7006 (T) or Sterling Grey (G)
- Thermofoil side panels on inside and outside of arm, call Customer Service for pricing and finishes
- Add up to 20 lbs of additional weight per seat, add \$140 List per seat
- Non-standard laminates, contact Spec for pricing
- Antibacterial and antimicrobial fabrics available
- Floor mounting straps available, call Customer Service
- Connecting and freestanding tables
- CAL 133
- Elimination of separated seat and back available with either solid or perforated seat pan, call Customer Service

Contact Spec Customer Service to railroad fabrics (specify repeat info and yardage requirement will be provided) and for repeats greater than 5" x 5"

Two Seater with outside arms

COM 3.5 yds
0.75 yd COM per single seat / 1.0 yd COM per single back

MODEL	COM	GR 1	GR 2	GR 3	GR 4	GR 5	GR 6
4602M-LL	1877	2065	2127	2252	2437	2576	2765

Side panel – laminated, outside and inside
CAL 133, add \$228 List per two seater

COM 4.5 yds
0.75 yd COM per single seat / 1.0 yd COM per single back / .5 yd COM per panel

MODEL	COM	GR 1	GR 2	GR 3	GR 4	GR 5	GR 6
4602M-LU	1973	2215	2295	2454	2694	2874	3115

Side panel – laminated, outside, upholstered inside
CAL 133, add \$307 List per two seater

COM 4.5 yds
0.75 yd COM per single seat / 1.0 yd COM per single back / .5 yd COM per panel

MODEL	COM	GR 1	GR 2	GR 3	GR 4	GR 5	GR 6
4602M-UL	1973	2215	2295	2454	2694	2874	3115

Side panel – upholstered outside, laminated inside
CAL 133, add \$307 List per two seater

COM 5.5 yds
0.75 yd COM per single seat / 1.0 yd COM per single back / 1.0 yd COM per panel

MODEL	COM	GR 1	GR 2	GR 3	GR 4	GR 5	GR 6
4602M-UU	2071	2367	2461	2658	2949	3170	3466

Side panel – upholstered, outside and inside
CAL 133, add \$386 List per two seater

Dimensions (inches)

seat H	18.0	seat W	45.5	arm H	26.0
total H	31.75	total W	51.0	depth	30.0

For KYDEX® arms add suffix K and \$264
Dynamic load tested to 750 lbs per two seater



4602M
148 lbs



BEHAVIORAL HEALTH & HEAVY DUTY Specialty Seating

DIGNITY2

Standard Features

- Separate seat and back
- Arm caps available in wood, or polyurethane
- Laminate or upholstered side panels on inside and outside of arm in various combinations
- Upholstered side panels can match or contrast seat/back
- Select from 15 standard laminates or choose any standard Wilsonart, Nevamar, Formica, Arborite and Pionite matte finish laminates at no upcharge.
- Sculpted steel leg in any Spectone finish
- No protruding legs or hardware
- Tamper proof fastenings
- Non-removable steel levelling glides
- Ships assembled
- Ships 1/carton 15 cu ft

Options

- Polyurethane arm caps available in Black (B) or Taupe RAL 7006 (T) or Sterling Grey (G)
- For wood arm caps, select from 9 standard stains, or stain-to-match at no upcharge
- KYDEX® arm caps available in Black (B) or Taupe RAL 7006 (T) or Sterling Grey (G)
- Thermofoil side panels on inside and outside of arm, call Customer Service for pricing and finishes
- Add up to 20 lbs of additional weight per seat, add \$140 List per seat
- Non-standard laminates, contact Spec for pricing
- Antibacterial and antimicrobial fabrics available
- Floor mounting straps available, call Customer Service
- Connecting and freestanding tables
- CAL 133
- Elimination of separated seat and back available with either solid or perforated seat pan, call Customer Service

Contact Spec Customer Service to railroad fabrics (specify repeat info and yardage requirement will be provided) and for repeats greater than 5" x 5"

Three Seater with outside arms

COM 5.25 yds

0.75 yd COM per single seat / 1.0 yd COM per single back

MODEL	COM	GR 1	GR 2	GR 3	GR 4	GR 5	GR 6
4603M-LL	2460	2740	2834	3020	3300	3511	3791

Side panel – laminated, outside and inside

CAL 133, add \$342 List per three seater

COM 6.25 yds

0.75 yd COM per single seat / 1.0 yd COM per single back / .5 yd COM per panel

MODEL	COM	GR 1	GR 2	GR 3	GR 4	GR 5	GR 6
4603M-LU	2556	2892	3002	3225	3557	3805	4141

Side panel – laminated, outside, upholstered inside

CAL 133, add \$421 List per three seater

COM 6.25 yds

0.75 yd COM per single seat / 1.0 yd COM per single back / .5 yd COM per panel

MODEL	COM	GR 1	GR 2	GR 3	GR 4	GR 5	GR 6
4603M-UL	2556	2892	3002	3225	3557	3805	4141

Side panel – upholstered outside, laminated inside

CAL 133, add \$421 List per three seater

COM 7.25 yds

0.75 yd COM per single seat / 1.0 yd COM per single back / 1.0 yd COM per panel

MODEL	COM	GR 1	GR 2	GR 3	GR 4	GR 5	GR 6
4603M-UU	2652	3041	3169	3426	3812	4101	4492

Side panel – upholstered, outside and inside

CAL 133, add \$500 List per three seater

Dimensions (inches)

seat H	18.0	seat W	68.0	arm H	26.0
total H	31.75	total W	74.0	depth	30.0

For KYDEX® arms add suffix K and \$264

Dynamic load tested to 1000 lbs per three seater



4603M
203 lbs



BEHAVIORAL HEALTH & HEAVY DUTY Specialty Seating

DIGNITY2

Standard Features

- Separate seat and back
- Arm caps available in wood, or polyurethane
- Laminate or upholstered side panels on inside and outside of arm in various combinations
- Upholstered side panels can match or contrast seat/back
- Select from 15 standard laminates or choose any standard Wilsonart, Nevamar, Formica, Arborite and Pionite matte finish laminates at no upcharge.
- Sculpted steel leg in any Spectone finish
- No protruding legs or hardware
- Tamper proof fastenings
- Non-removable steel levelling glides
- Ships assembled
- Ships 1/carton 15 cu ft

Options

- Polyurethane arm caps available in Black (B) or Taupe RAL 7006 (T) or Sterling Grey (G)
- For wood arm caps, select from 9 standard stains, or stain-to-match at no upcharge
- KYDEX® arm caps available in Black (B) or Taupe RAL 7006 (T) or Sterling Grey (G)
- Thermofoil side panels on inside and outside of arm, call Customer Service for pricing and finishes
- Add up to 20 lbs of additional weight per seat, add \$140 List per seat
- Non-standard laminates, contact Spec for pricing
- Antibacterial and antimicrobial fabrics available
- Floor mounting straps available, call Customer Service
- Connecting and freestanding tables
- CAL 133
- Elimination of separated seat and back available with either solid or perforated seat pan, call Customer Service

Contact Spec Customer Service to railroad fabrics (specify repeat info and yardage requirement will be provided) and for repeats greater than 5" x 5"



Bariatric Single Seater with arms

COM 3.25 yds

1.5 yd COM per single seat / 1.75 yd COM per single back

MODEL	COM	GR 1	GR 2	GR 3	GR 4	GR 5	GR 6
4601G-LL	1607	1783	1840	1955	2128	2259	2434

Side panel – laminated, outside and inside

CAL 133, add \$154 List per chair

COM 4.25 yds

1.5 yd COM per single seat / 1.75 yd COM per single back / .5 yd COM per panel

MODEL	COM	GR 1	GR 2	GR 3	GR 4	GR 5	GR 6
4601G-LU	1704	1932	2006	2158	2384	2553	2783

Side panel – laminated, outside, upholstered inside

CAL 133, add \$233 List per chair

COM 4.25 yds

1.5 yd COM per single seat / 1.75 yd COM per single back / .5 yd COM per panel

MODEL	COM	GR 1	GR 2	GR 3	GR 4	GR 5	GR 6
4601G-UL	1704	1932	2006	2158	2384	2553	2783

Side panel – upholstered outside, laminated inside

CAL 133, add \$233 List per chair

COM 5.25 yds

1.5 yd COM per single seat / 1.75 yd COM per single back / 1.0 yd COM per panel

MODEL	COM	GR 1	GR 2	GR 3	GR 4	GR 5	GR 6
4601G-UU	1802	2083	2176	2363	2643	2851	3132

Side panel – upholstered, outside and inside

CAL 133, add \$312 List per chair

Dimensions (inches)

seat H	18.0	seat W	31.0	arm H	26.0
total H	31.75	total W	36.5	depth	30.0

For KYDEX® arms add suffix K and \$264
Dynamic load tested to 750 lbs per chair



4601G
112 lbs



BEHAVIORAL HEALTH & HEAVY DUTY Specialty Seating

DIGNITY2

Standard Features

- Separate seat and back
- Arm caps available in wood, or polyurethane
- Laminate or upholstered side panels on inside and outside of arm in various combinations
- Upholstered side panels can match or contrast seat/back
- Select from 15 standard laminates or choose any standard Wilsonart, Nevamar, Formica, Arborite and Pionite matte finish laminates at no upcharge.
- Sculpted steel leg in any Spectone finish
- No protruding legs or hardware
- Tamper proof fastenings
- Non-removable steel levelling glides
- Ships assembled
- Ships 1/carton 15 cu ft

Options

- Polyurethane arm caps available in Black (B) or Taupe RAL 7006 (T) or Sterling Grey (G)
- For wood arm caps, select from 9 standard stains, or stain-to-match at no upcharge
- KYDEX® arm caps available in Black (B) or Taupe RAL 7006 (T) or Sterling Grey (G)
- Thermofoil side panels on inside and outside of arm, call Customer Service for pricing and finishes
- Add up to 20 lbs of additional weight per seat, add \$140 List per seat
- Non-standard laminates, contact Spec for pricing
- Antibacterial and antimicrobial fabrics available
- Floor mounting straps available, call Customer Service
- Connecting and freestanding tables
- CAL 133
- Elimination of separated seat and back available with either solid or perforated seat pan, call Customer Service

Contact Spec Customer Service to railroad fabrics (specify repeat info and yardage requirement will be provided) and for repeats greater than 5" x 5"

Single Seater with no arms

COM 1.75 yds
0.75 yd COM per single seat / 1.0 yd COM per single back

MODEL	COM	GR 1	GR 2	GR 3	GR 4	GR 5	GR 6
4601M-LL-N	1272	1368	1398	1459	1553	1624	1716

Side panel – laminated, outside and inside
CAL 133, add \$114 List per chair

COM 2.75 yds
0.75 yd COM per single seat / 1.0 yd COM per single back / .5 yd COM per panel

MODEL	COM	GR 1	GR 2	GR 3	GR 4	GR 5	GR 6
4601M-LU-N	1370	1516	1565	1664	1810	1919	2065

Side panel – laminated, outside, upholstered inside
CAL 133, add \$193 List per chair

COM 2.75 yds
0.75 yd COM per single seat / 1.0 yd COM per single back / .5 yd COM per panel

MODEL	COM	GR 1	GR 2	GR 3	GR 4	GR 5	GR 6
4601M-UL-N	1370	1516	1565	1664	1810	1919	2065

Side panel – upholstered outside, laminated inside
CAL 133, add \$193 List per chair

COM 3.75 yds
0.75 yd COM per single seat / 1.0 yd COM per single back / 1.0 yd COM per panel

MODEL	COM	GR 1	GR 2	GR 3	GR 4	GR 5	GR 6
4601M-UU-N	1463	1667	1732	1865	2064	2215	2416

Side panel – upholstered, outside and inside
CAL 133, add \$277 List per chair

Dimensions (inches)

seat H	18.0	seat W	23.0	arm H	17.5
total H	31.75	total W	28.5	depth	30.0

For KYDEX® arms add suffix K and \$264
Dynamic load tested to 500 lbs per chair



4601M-N
90 lbs



BEHAVIORAL HEALTH & HEAVY DUTY Specialty Seating

DIGNITY2

Standard Features

- Separate seat and back
- Arm caps available in wood, or polyurethane
- Laminate or upholstered side panels on inside and outside of arm in various combinations
- Upholstered side panels can match or contrast seat/back
- Select from 15 standard laminates or choose any standard Wilsonart, Nevamar, Formica, Arborite and Pionite matte finish laminates at no upcharge.
- Sculpted steel leg in any Spectone finish
- No protruding legs or hardware
- Tamper proof fastenings
- Non-removable steel levelling glides
- Ships assembled
- Ships 1/carton 15 cu ft

Options

- Polyurethane arm caps available in Black (B) or Taupe RAL 7006 (T) or Sterling Grey (G)
- For wood arm caps, select from 9 standard stains, or stain-to-match at no upcharge
- KYDEX® arm caps available in Black (B) or Taupe RAL 7006 (T) or Sterling Grey (G)
- Thermofoil side panels on inside and outside of arm, call Customer Service for pricing and finishes
- Add up to 20 lbs of additional weight per seat, add \$140 List per seat
- Non-standard laminates, contact Spec for pricing
- Antibacterial and antimicrobial fabrics available
- Floor mounting straps available, call Customer Service
- Connecting and freestanding tables
- CAL 133
- Elimination of separated seat and back available with either solid or perforated seat pan, call Customer Service

Contact Spec Customer Service to railroad fabrics (specify repeat info and yardage requirement will be provided) and for repeats greater than 5" x 5"



Two Seater with no arms

COM 3.5 yds
0.75 yd COM per single seat / 1.0 yd COM per single back

MODEL	COM	GR 1	GR 2	GR 3	GR 4	GR 5	GR 6
4602M-LL-N	1855	2043	2104	2227	2413	2554	2741

Side panel – laminated, outside and inside
CAL 133, add \$228 List per two seater



4602M-N
144 lbs

COM 4.5 yds
0.75 yd COM per single seat / 1.0 yd COM per single back / .5 yd COM per panel

MODEL	COM	GR 1	GR 2	GR 3	GR 4	GR 5	GR 6
4602M-LU-N	1950	2192	2271	2432	2671	2850	3090

Side panel – laminated, outside, upholstered inside
CAL 133, add \$307 List per two seater

COM 4.5 yds
0.75 yd COM per single seat / 1.0 yd COM per single back / .5 yd COM per panel

MODEL	COM	GR 1	GR 2	GR 3	GR 4	GR 5	GR 6
4602M-UL-N	1950	2192	2271	2432	2671	2850	3090

Side panel – upholstered outside, laminated inside
CAL 133, add \$307 List per two seater

COM 5.5 yds
0.75 yd COM per single seat / 1.0 yd COM per single back / 1.0 yd COM per panel

MODEL	COM	GR 1	GR 2	GR 3	GR 4	GR 5	GR 6
4602M-UU-N	2047	2342	2439	2633	2928	3146	3443

Side panel – upholstered, outside and inside
CAL 133, add \$386 List per two seater

Dimensions (inches)

seat H	18.0	seat W	45.0	arm H	17.5
total H	31.75	total W	51.0	depth	30.0

For KYDEX® arms add suffix K and \$264
Dynamic load tested to 750 lbs per two seater



BEHAVIORAL HEALTH & HEAVY DUTY Specialty Seating

DIGNITY2

Standard Features

- Separate seat and back
- Arm caps available in wood, or polyurethane
- Laminate or upholstered side panels on inside and outside of arm in various combinations
- Upholstered side panels can match or contrast seat/back
- Select from 15 standard laminates or choose any standard Wilsonart, Nevamar, Formica, Arborite and Pionite matte finish laminates at no upcharge.
- Sculpted steel leg in any Spectone finish
- No protruding legs or hardware
- Tamper proof fastenings
- Non-removable steel levelling glides
- Ships assembled
- Ships 1/carton 15 cu ft

Options

- Polyurethane arm caps available in Black (B) or Taupe RAL 7006 (T) or Sterling Grey (G)
- For wood arm caps, select from 9 standard stains, or stain-to-match at no upcharge
- KYDEX® arm caps available in Black (B) or Taupe RAL 7006 (T) or Sterling Grey (G)
- Thermofoil side panels on inside and outside of arm, call Customer Service for pricing and finishes
- Add up to 20 lbs of additional weight per seat, add \$140 List per seat
- Non-standard laminates, contact Spec for pricing
- Antibacterial and antimicrobial fabrics available
- Floor mounting straps available, call Customer Service
- Connecting and freestanding tables
- CAL 133
- Elimination of separated seat and back available with either solid or perforated seat pan, call Customer Service

Contact Spec Customer Service to railroad fabrics (specify repeat info and yardage requirement will be provided) and for repeats greater than 5" x 5"

Three Seater with no arms

COM 5.25 yds
0.75 yd COM per single seat / 1.0 yd COM per single back

MODEL	COM	GR 1	GR 2	GR 3	GR 4	GR 5	GR 6
4603M-LL-N	2438	2719	2811	2998	3277	3486	3767

Side panel – laminated, outside and inside
CAL 133, add \$342 List per three seater

COM 6.25 yds
0.75 yd COM per single seat / 1.0 yd COM per single back / .5 yd COM per panel

MODEL	COM	GR 1	GR 2	GR 3	GR 4	GR 5	GR 6
4603M-LU-N	2533	2869	2978	3200	3533	3782	4117

Side panel – laminated, outside, upholstered inside
CAL 133, add \$421 List per three seater

COM 6.25 yds
0.75 yd COM per single seat / 1.0 yd COM per single back / .5 yd COM per panel

MODEL	COM	GR 1	GR 2	GR 3	GR 4	GR 5	GR 6
4603M-UL-N	2533	2869	2978	3200	3533	3782	4117

Side panel – upholstered outside, laminated inside
CAL 133, add \$421 List per three seater

COM 7.25 yds
0.75 yd COM per single seat / 1.0 yd COM per single back / 1.0 yd COM per panel

MODEL	COM	GR 1	GR 2	GR 3	GR 4	GR 5	GR 6
4603M-UU-N	2628	3018	3145	3404	3788	4078	4468

Side panel – upholstered, outside and inside
CAL 133, add \$500 List per three seater

Dimensions (inches)

seat H	18.0	seat W	68.0	arm H	17.5
total H	31.75	total W	74.0	depth	30.0

For KYDEX® arms add suffix K and \$264
Dynamic load tested to 1000 lbs per three seater



4603M-N
199 lbs



BEHAVIORAL HEALTH & HEAVY DUTY Specialty Seating

DIGNITY2

Standard Features

- Separate seat and back
- Arm caps available in wood, or polyurethane
- Laminate or upholstered side panels on inside and outside of arm in various combinations
- Upholstered side panels can match or contrast seat/back
- Select from 15 standard laminates or choose any standard Wilsonart, Nevamar, Formica, Arborite and Pionite matte finish laminates at no upcharge.
- Sculpted steel leg in any Spectone finish
- No protruding legs or hardware
- Tamper proof fastenings
- Non-removable steel levelling glides
- Ships assembled
- Ships 1/carton 15 cu ft

Options

- Polyurethane arm caps available in Black (B) or Taupe RAL 7006 (T) or Sterling Grey (G)
- For wood arm caps, select from 9 standard stains, or stain-to-match at no upcharge
- KYDEX® arm caps available in Black (B) or Taupe RAL 7006 (T) or Sterling Grey (G)
- Thermofoil side panels on inside and outside of arm, call Customer Service for pricing and finishes
- Add up to 20 lbs of additional weight per seat, add \$140 List per seat
- Non-standard laminates, contact Spec for pricing
- Antibacterial and antimicrobial fabrics available
- Floor mounting straps available, call Customer Service
- Connecting and freestanding tables
- CAL 133
- Elimination of separated seat and back available with either solid or perforated seat pan, call Customer Service

Contact Spec Customer Service to railroad fabrics (specify repeat info and yardage requirement will be provided) and for repeats greater than 5" x 5"



Bariatric Single Seater with no arms

COM 3.25 yds

1.5 yd COM per single seat / 1.75 yd COM per single back

MODEL	COM	GR 1	GR 2	GR 3	GR 4	GR 5	GR 6
4601G-LL-N	1585	1759	1816	1931	2105	2235	2410

Side panel – laminated, outside and inside

CAL 133, add \$154 List per chair

COM 4.25 yds

1.5 yd COM per single seat / 1.75 yd COM per single back / .5 yd COM per panel

MODEL	COM	GR 1	GR 2	GR 3	GR 4	GR 5	GR 6
4601G-LU-N	1681	1910	1982	2136	2362	2531	2760

Side panel – laminated, outside, upholstered inside

CAL 133, add \$233 List per chair

COM 4.25 yds

1.5 yd COM per single seat / 1.75 yd COM per single back / .5 yd COM per panel

MODEL	COM	GR 1	GR 2	GR 3	GR 4	GR 5	GR 6
4601G-UL-N	1681	1910	1982	2136	2362	2531	2760

Side panel – upholstered outside, laminated inside

CAL 133, add \$233 List per chair

COM 5.25 yds

1.5 yd COM per single seat / 1.75 yd COM per single back / 1.0 yd COM per panel

MODEL	COM	GR 1	GR 2	GR 3	GR 4	GR 5	GR 6
4601G-UU-N	1778	2059	2153	2338	2619	2829	3111

Side panel – upholstered, outside and inside

CAL 133, add \$312 List per chair

Dimensions (inches)

seat H	18.0	seat W	31.0	arm H	17.5
total H	31.75	total W	36.5	depth	30.0

For KYDEX® arms add suffix K and \$264
Dynamic load tested to 750 lbs per chair



4601G-N
108 lbs



BEHAVIORAL HEALTH & HEAVY DUTY Specialty Seating

DIGNITY2

Standard Features

- Separate seat and back
- Arm caps available in wood, or polyurethane
- Laminate or upholstered side panels on inside and outside of arm in various combinations
- Upholstered side panels can match or contrast seat/back
- Select from 15 standard laminates or choose any standard Wilsonart, Nevamar, Formica, Arborite and Pionite matte finish laminates at no upcharge.
- Sculpted steel leg in any Spectone finish
- No protruding legs or hardware
- Tamper proof fastenings
- Non-removable steel levelling glides
- Ships assembled
- Ships 1/carton 15 cu ft

Options

- Polyurethane arm caps available in Black (B) or Taupe RAL 7006 (T) or Sterling Grey (G)
- For wood arm caps, select from 9 standard stains, or stain-to-match at no upcharge
- KYDEX® end and polyurethane middle arm caps available in Black (B), Taupe RAL 7006 (T), or Sterling Grey (G).
- Thermofoil side panels on inside and outside of arm, call Customer Service for pricing and finishes
- Add up to 20 lbs of additional weight per seat, add \$140 List per seat
- Non-standard laminates, contact Spec for pricing
- Antibacterial and antimicrobial fabrics available
- Floor mounting straps available, call Customer Service
- Connecting and freestanding tables
- CAL 133
- Elimination of separated seat and back available with either solid or perforated seat pan, call Customer Service

Contact Spec Customer Service to railroad fabrics (specify repeat info and yardage requirement will be provided) and for repeats greater than 5" x 5"

Two Seater with half arms

COM 3.5 yds
0.75 yd COM per single seat / 1.0 yd COM per single back

MODEL	COM	GR 1	GR 2	GR 3	GR 4	GR 5	GR 6
4612M-LL	2225	2412	2475	2599	2785	2929	3115

Side panel – laminated, outside and inside
CAL 133, add \$228 List per two seater

COM 5.0 yds
0.75 yd COM per single seat / 1.0 yd COM per single back / .5 yd COM per panel

MODEL	COM	GR 1	GR 2	GR 3	GR 4	GR 5	GR 6
4612M-LU	2320	2589	2674	2854	3120	3322	3590

Side panel – laminated outside, upholstered inside, half arms will be upholstered
CAL 133, add \$544 List per two seater

COM 4.5 yds
0.75 yd COM per single seat / 1.0 yd COM per single back / .5 yd COM per panel

MODEL	COM	GR 1	GR 2	GR 3	GR 4	GR 5	GR 6
4612M-UL	2320	2589	2674	2854	3120	3322	3590

Side panel – upholstered outside, laminated inside, half arms will be laminated
CAL 133, add \$544 List per two seater

COM 6.0 yds
0.75 yd COM per single seat / 1.0 yd COM per single back / 1.0 yd COM per panel

MODEL	COM	GR 1	GR 2	GR 3	GR 4	GR 5	GR 6
4612M-UU	2418	2737	2842	3058	3377	3621	3941

Side panel – upholstered, outside and inside
CAL 133, add \$781 List per two seater

Dimensions (inches)

seat H	18.0	seat W	48.0	arm H	26.0
total H	31.75	total W	54.0	depth	30.0

For KYDEX® arms add suffix K and \$396
Dynamic load tested to 750 lbs per two seater



4612M
153 lbs



BEHAVIORAL HEALTH & HEAVY DUTY Specialty Seating

DIGNITY2

Standard Features

- Separate seat and back
- Arm caps available in wood, or polyurethane
- Laminate or upholstered side panels on inside and outside of arm in various combinations
- Upholstered side panels can match or contrast seat/back
- Select from 15 standard laminates or choose any standard Wilsonart, Nevamar, Formica, Arborite and Pionite matte finish laminates at no upcharge.
- Sculpted steel leg in any Spectone finish
- No protruding legs or hardware
- Tamper proof fastenings
- Non-removable steel levelling glides
- Ships assembled
- Ships 1/carton 15 cu ft

Options

- Polyurethane arm caps available in Black (B) or Taupe RAL 7006 (T) or Sterling Grey (G)
- For wood arm caps, select from 9 standard stains, or stain-to-match at no upcharge
- KYDEX® end and polyurethane middle arm caps available in Black (B), Taupe RAL 7006 (T), or Sterling Grey (G).
- Thermofoil side panels on inside and outside of arm, call Customer Service for pricing and finishes
- Add up to 20 lbs of additional weight per seat, add \$140 List per seat
- Non-standard laminates, contact Spec for pricing
- Antibacterial and antimicrobial fabrics available
- Floor mounting straps available, call Customer Service
- Connecting and freestanding tables
- CAL 133
- Elimination of separated seat and back available with either solid or perforated seat pan, call Customer Service

Contact Spec Customer Service to railroad fabrics (specify repeat info and yardage requirement will be provided) and for repeats greater than 5" x 5"

Three Seater with half arms

COM 5.25 yds

0.75 yd COM per single seat / 1.0 yd COM per single back

MODEL	COM	GR 1	GR 2	GR 3	GR 4	GR 5	GR 6
4613M-LL	3168	3436	3527	3715	3997	4209	4489

Side panel – laminated, outside and inside
CAL 133, add \$342 List per three seater

COM 7.25 yds

0.75 yd COM per single seat / 1.0 yd COM per single back / .5 yd COM per panel

MODEL	COM	GR 1	GR 2	GR 3	GR 4	GR 5	GR 6
4613M-LU	3251	3639	3763	4024	4412	4705	5092

Side panel – laminated outside, upholstered inside, half arms will be upholstered
CAL 133, add \$737 List per three seater

COM 6.25 yds

0.75 yd COM per single seat / 1.0 yd COM per single back / .5 yd COM per panel

MODEL	COM	GR 1	GR 2	GR 3	GR 4	GR 5	GR 6
4613M-UL	3251	3639	3763	4024	4412	4705	5092

Side panel – upholstered outside, laminated inside, half arms will be laminated
CAL 133, add \$737 List per three seater

COM 8.25 yds

0.75 yd COM per single seat / 1.0 yd COM per single back / 1.0 yd COM per panel

MODEL	COM	GR 1	GR 2	GR 3	GR 4	GR 5	GR 6
4613M-UU	3348	3788	3930	4227	4669	5001	5442

Side panel – upholstered, outside and inside
CAL 133, add \$974 List per three seater

Dimensions (inches)

seat H	18.0	seat W	75.0	arm H	26.0
total H	31.75	total W	80.5	depth	30.0

For KYDEX® arms add suffix K and \$528
Dynamic load tested to 1000 lbs per three seater



4613M
209 lbs

BEHAVIORAL HEALTH & HEAVY DUTY Specialty Seating

DIGNITY2

Standard Features

- Tamper proof fastenings

To order full panel side panels, add ZC-LL, or ZC-U to model number, e.g. 4601M-ZC-LL

To order wall-saving side panels, add WS-LL or WS-U to the model number, e.g. 4601M-WS-U

Pricing is for entire chair (2 end side panels).

Contact Spec Customer Service to railroad fabrics (specify repeat info and yardage requirement will be provided) and for repeats greater than 5" x 5"

Options

- Thermofoil side panels on inside and outside of arm, call Customer Service for pricing and finishes
- Floor mounting straps available, call Customer Service



Extended Side Panels

Laminate Panels Inside & Outside

MODEL	LIST
ZC-LL	75

Laminate & Upholstered Combination Panels

COM 0.5 yd per panel

MODEL	COM	GR 1	GR 2	GR 3	GR 4	GR 5	GR 6
ZC-LU	75	84	87	96	105	111	121
ZC-UL	75	84	87	96	105	111	121

Fully Upholstered Panels

COM 1.5 yd per panel

MODEL	COM	GR 1	GR 2	GR 3	GR 4	GR 5	GR 6
ZC-U	75	84	87	96	105	111	121



Side panel extended to floor

Wall-Saving Side Panels

Laminate Panels Inside & Outside

MODEL	LIST
WS-LL	118

Laminate & Upholstered Combination Panels

COM 1.0 yd per panel

MODEL	COM	GR 1	GR 2	GR 3	GR 4	GR 5	GR 6
WS-LU	118	245	276	343	441	517	591
WS-UL	118	245	276	343	441	517	591

Fully Upholstered Panels

COM 2.0 yd per panel

MODEL	COM	GR 1	GR 2	GR 3	GR 4	GR 5	GR 6
WS-U	118	245	276	343	441	517	591



Wall-saving side panels



BEHAVIORAL HEALTH & HEAVY DUTY Specialty Seating DIGNITY2

Standard Features

- Black finish only
- 6" soft wheel casters
- Standard Dolly holds 1 single seat chair
- Ships 1/carton, 17 cu. ft.
- Ships assembled



Dignity2 - Dolly

Description	Model	Price	Weight
Single Seat Dolly	DIGN-99	505	12lb

Dimensions (inches)

height	39.0
width	23.0
depth	30.0

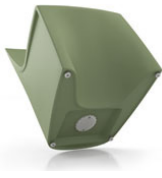




BEHAVIORAL HEALTH & HEAVY DUTY Specialty Seating HARDI

Standard Features

- Single roto-molded design
- CAL 133 compliant
- Select from 6 standard colors, which have been selected from our palette of standard Spectone finishes
- No protruding legs or hardware
- Standard without glides
- Dining ships 1/carton 14 cu ft, Lounge ships 1/carton 16 cu ft
- Removable threaded cap is fastened with tamperproof fasteners. Sand (not included) can be added on site for additional weight and ballast utilizing the plastic bag from packaging. Contact Customer Service for more information



Options

- Four nickel-plated non-removable nylon glides secured with LOCTITE®, add \$20 List
- Ganging is available. Please specify a set of nickel-plated non-removable nylon glides secured with LOCTITE for each chair that you want to gang together (\$20 List per chair), and add Q-1 ganging kits (\$36 List). In other words, to gang 9 chairs together, please order 9 sets of glides and 8 ganging kits.
- Floor mounting is available. Please specify a set of nickel-plated non-removable nylon glides secured with LOCTITE for each chair that you want to mount to the floor (\$20 List per chair), and add the same amount of floor mounting kits (\$36 List). In other words, to floor mount 9 chairs, please order 9 sets of glides and 9 floor mounting kits.



Dining

MODEL	Price
8701	531
8708	610

Dimensions (inches)

seat H	18.0	seat W	20.0	arm H	26.0	total H	33.0
depth	24.0	total W (no arms)	22.0	total W (arms)	24.0		

Meets BIFMA Seating Durability Test to 500 lbs



8701
Without arms
23 lbs



8708
With arms
28 lbs

Lounge

MODEL	Price
8801	573
8808	681

Dimensions (inches)

seat H	17.25	seat W	23.0	arm H	25.0	total H	29.50
depth	27.0	total W (no arms)	26.0	total W (arms)	27.0		

Meets BIFMA Seating Durability Test to 500 lbs



8801
Without arms
25 lbs



8808
With arms
31 lbs

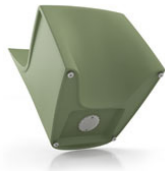


Shipping Jan 1, 2021

BEHAVIORAL HEALTH & HEAVY DUTY Specialty Seating **NEW** HARDI

Standard Features

- Single roto-molded design
- Select from 6 standard colors, which have been selected from our palette of standard Spectone finishes
- No protruding legs or hardware
- Standard without glides
- Dining ships 1/carton 14 cu ft, Lounge ships 1/carton 16 cu ft
- Removable threaded cap is fastened with tamperproof fasteners. Sand (not included) can be added on site for additional weight and ballast utilizing the plastic bag from packaging. Contact Customer Service for more information



Options

- Four nickel-plated non-removable nylon glides secured with LOCTITE®, add \$20 List
- Ganging is available. Please specify a set of nickel-plated non-removable nylon glides secured with LOCTITE for each chair that you want to gang together (\$20 List per chair), and add Q-1 ganging kits (\$36 List). In other words, to gang 9 chairs together, please order 9 sets of glides and 8 ganging kits.
- Floor mounting is available. Please specify a set of nickel-plated non-removable nylon glides secured with LOCTITE for each chair that you want to mount to the floor (\$20 List per chair), and add the same amount of floor mounting kits (\$36 List). In other words, to floor mount 9 chairs, please order 9 sets of glides and 9 floor mounting kits.



Club

MODEL **8809** Price **Coming Soon**

Dimensions (inches)
 seat H 17.25 seat W 23.0 arm H 25.0 total H 29.50
 depth 27.0 total W 27.0

Meets BIFMA Seating Durability Test to 500 lbs



8809
Club
32 lbs



BEHAVIORAL HEALTH & HEAVY DUTY Specialty Seating HARDI

Standard Features

- Single roto-molded design
- CAL 133 compliant
- Select from 6 standard colors, which have been selected from our palette of standard Spectone finishes
- No protruding legs or hardware
- Rocker ships 1/carton 26 cu ft
- Removable threaded cap is fastened with tamperproof fasteners. Sand (not included) can be added on site for additional weight and ballast utilizing the plastic bag from packaging. Contact Customer Service for more information



Rocker

MODEL	Price
8840	1181

Dimensions (inches)

seat H	18.25	seat W	20.0	arm H	25.0	total H	37.5
depth	33.75	total W	28.0				

Meets BIFMA Seating Durability Test to 500 lbs



8840
36 lbs



BEHAVIORAL HEALTH & HEAVY DUTY Specialty Seating HARDI

Standard Features

- Single roto-molded design
- CAL 133 compliant
- Select from 6 standard colors, which have been selected from our palette of standard Spectone finishes
- No protruding legs or hardware
- Standard without glides
- Stool ships 1/carton 4 cu ft
- Removable threaded cap is fastened with tamperproof fasteners. Sand (not included) can be added on site for additional weight and ballast utilizing the plastic bag from packaging. Contact Customer Service for more information

Options

- Nickel-plated non-removable nylon glides secured with LOCTITE®, add \$20 List
- Floor mounting is available. Please specify a set of nickel-plated non-removable nylon glides secured with LOCTITE for each stool that you want to mount to the floor (\$20 List per stool), and add the same amount of floor mounting kits (\$36 List). In other words, to floor mount 9 stool, please order 9 sets of glides and 9 floor mounting kits.



Stool

MODEL	Price
8901	379

Dimensions (inches)

seat H	18.0	seat W	16.0
total H	18.0	total W	17.5

Meets BIFMA Seating Durability Test to 500 lbs



8901
10 lbs



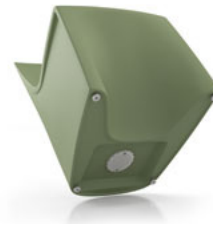
BEHAVIORAL HEALTH & HEAVY DUTY Specialty Seating HARDI

Standard Features

- Single roto-molded design
- Select from 6 standard colors, which have been selected from our palette of standard Spectone finishes
- No protruding legs or hardware
- Standard without glides
- Ships 1/carton 6 cu ft
- Removable threaded cap is fastened with tamperproof fasteners. Sand (not included) can be added on site for additional weight and ballast utilizing the plastic bag from packaging. Contact Customer Service for more information

Options

- Nickel-plated non-removable nylon glides secured with LOCTITE®, add \$20 List
- Floor mounting is available. Please specify a set of nickel-plated non-removable nylon glides secured with LOCTITE for each chair that you want to mount to the floor (\$20 List per chair), and add the same amount of floor mounting kits (\$36 List). In other words, to floor mount 9 chairs, please order 9 sets of glides and 9 floor mounting kits.



Children's Dining

MODEL	Price
8702	495

Dimensions (inches)

seat H	15.0	seat W	18.0	total H	27.0
depth	20.5	total W (no arms)	18.0		

Meets BIFMA Seating Durability Test to 500 lbs



8702
Without arms
15.5 lbs



BEHAVIORAL HEALTH & HEAVY DUTY Specialty Seating

MIDWAY HD

Standard Features

- Separate seat and back
- Polyurethane arms or wood arms
- Fully welded 1.25" frame with glides
- Added weight, Sled base
- Frame in any Spectone color
- Steel glides secured with LOCTITE®
- Tamperproof hardware
- Zippered covers glued shut, pulls removed
- Ships assembled
- Ships 1/carton 17 cu ft

Options

- Polyurethane arms available in Black, Sterling Grey or Taupe (RAL 7006)
- Wood arms in Natural Maple are available in any of 9 standard stains or stain-to-match at no up charge
- Floor mounting glides, add \$50 List/chair
- Antibacterial and antimicrobial fabrics available
- Different fabric on seat and back at no upcharge
- CAL 133

Contact Spec Customer Service to railroad fabrics (specify repeat info and yardage requirement will be provided) and for repeats greater than 5" x 5"



Midway HD Single Seater with arms – Sled Base

COM 1.5 yds
 0.5 yd COM per single seat
 1.0 yd COM per single back

MODEL	COM	GR 1	GR 2	GR 3	GR 4	GR 5	GR 6
3201UHD	1216	1316	1348	1412	1513	1586	1684

Dimensions (inches)

seat H	18.0	seat W	20.5	arm H	26.0
total H	36.0	total W	23.75	depth	26.0

Meets BIFMA Seating Durability Test to 500 lbs per seat
 CAL 133, add \$114 List per seat



3201UHD
48 lbs

Midway HD Highback with arms – Sled Base

COM 1.6 yds
 0.5 yd COM per single seat
 1.1 yds COM per single back

MODEL	COM	GR 1	GR 2	GR 3	GR 4	GR 5	GR 6
3201HHD	1340	1440	1475	1542	1643	1719	1820

Dimensions (inches)

seat H	18.0	seat W	20.5	arm H	26.0
total H	46.0	total W	23.75	depth	26.0

Meets BIFMA Seating Durability Test to 500 lbs per seat
 CAL 133, add \$138 List per chair



3201HHD
50 lbs



BEHAVIORAL HEALTH & HEAVY DUTY Specialty Seating

MIDWAY HD

Standard Features

- Separate seat and back
- Polyurethane arms or wood arms
- Fully welded 1.25" frame with glides
- Added weight, Sled base
- Frame in any Spectone color
- Steel glides secured with LOCTITE®
- Tamperproof hardware
- Zippered covers glued shut, pulls removed
- Ships assembled
- Ships 1/carton 17 cu ft

Options

- Polyurethane arms available in Black, Sterling Grey or Taupe (RAL 7006)
- Wood arms in Natural Maple are available in any of 9 standard stains or stain-to-match at no up charge
- Floor mounting glides, add \$50 List/chair
- Antibacterial and antimicrobial fabrics available
- Different fabric on seat and back at no upcharge
- CAL 133

Contact Spec Customer Service to railroad fabrics (specify repeat info and yardage requirement will be provided) and for repeats greater than 5" x 5"



Midway HD Bariatric with arms – Sled Base

COM 2.55 yds
 0.8 yd COM per single seat
 1.75 yd COM per single back

MODEL	COM	GR 1	GR 2	GR 3	GR 4	GR 5	GR 6
3201GHD	1585	1730	1777	1870	2016	2122	2267

Dimensions (inches)

seat H	18.0	seat W	30.0	arm H	26.0
total H	36.0	total W	32.75	depth	26.0

Meets BIFMA Seating Durability Test to 750 lbs per seat
 CAL 133, add \$189 List per seat



3201GHD
56 lbs



BEHAVIORAL HEALTH & HEAVY DUTY Specialty Seating

SNOWBALL 2 HD

Standard Features

- 0.875" frame
- Added weight, Sled base
- Frame in any Spectone color
- Steel glides secured with LOCTITE®
- Tamperproof hardware
- Does not stack
- Ships 1/carton 11 cu ft
- Staples on the bottom of the seat are covered by a 100% recycled plastic seat pan

Options

- Floor mounting glides, add \$50 List/chair
- CAL 133

Contact Spec Customer Service to railroad fabrics (specify repeat info and yardage requirement will be provided) and for repeats greater than 5" x 5"



Snowball 2 HD Armless – Sled Base

COM 1.0 yd
0.5 yd COM per single seat
0.5 yd COM per single back

MODEL	COM	GR 1	GR 2	GR 3	GR 4	GR 5	GR 6
1891HD	592	644	659	696	747	784	836

Dimensions (inches)

	seat H	18.0	seat W	18.5	depth	21.5
total H	33.0	total W	20.25			

Meets BIFMA Seating Durability Test to 500 lbs per chair
CAL 133, add \$61 List per chair
1" extra seat foam, specify and add \$16 List



1891HD
44 lbs

Snowball 2 HD with Steel Arms – Sled Base

COM 1.0 yd
0.5 yd COM per single seat
0.5 yd COM per single back

MODEL	COM	GR 1	GR 2	GR 3	GR 4	GR 5	GR 6
1881HD	630	683	700	735	786	826	877

Dimensions (inches)

	seat H	18.0	seat W	18.5	depth	21.5
total H	33.0	total W	23.5			

Meets BIFMA Seating Durability Test to 500 lbs per chair
CAL 133, add \$61 List per chair
1" extra seat foam, specify and add \$16 List



1881HD
45 lbs



BEHAVIORAL HEALTH & HEAVY DUTY Specialty Seating TAILOR HD

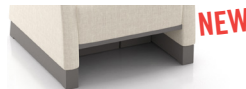
Standard Features

- Separate seat and back
- No pass-through
- Perforations in the metal frame allow for drainage
- Wall-saving frame
- Roto-molded foot in RAL7037
- Tamper proof fastenings
- Ships assembled
- Ships 1 single seat per carton, 24 cu ft
- Ships 1 bariatric seat per carton, 32 cu ft

Contact Spec Customer Service to railroad fabrics (specify repeat info and yardage requirement will be provided) and for repeats greater than 5" x 5"

Options

- Polyurethane arm caps available in Black (B), Taupe RAL 7006 (T) or Sterling Grey (G), add \$118 List per arm
- Nickel-plated non-removable nylon glides secured with LOCTITE®, add \$16 List
- Roto-molded inserts to close the gap under the seat, add **NEW** \$356 List for 9101MHD, and \$556 List for 9101GHD. Shipping September 1, 2020
- Floor mounting straps available, call Customer Service
- Up to 40 lbs of additional weight per seat is available, call Customer Service
- Upholstered arms/seat/back can match or contrast
- Antibacterial and antimicrobial fabrics available
- CAL 133



Optional inserts close the gap under the seat

Tailor HD Single Seat With Arms

COM 4.75 yds
1.25 yds COM per single seat
1.5 yds COM per single back
1.0 yds COM per arm

MODEL	COM	GR 1	GR 2	GR 3	GR 4	GR 5	GR 6
9101MHD	1665	1908	1993	2166	2410	2597	2840

Dimensions (inches)
seat H 18.0 seat W 23.0 arm H 24.5
total H 33.0 total W 29.0 total D 30.0

CAL 133, add \$350 List per unit
Meets BIFMA Seating Durability Test to 750 lbs per single seater



9101MHD
119 lbs

Tailor HD Bariatric With Arms

COM 5.5 yds
1.5 yds COM per single seat
2.0 yds COM per single back
1.0 yds COM per arm

MODEL	COM	GR 1	GR 2	GR 3	GR 4	GR 5	GR 6
9101GHD	1852	2136	2235	2438	2723	2942	3227

Dimensions (inches)
seat H 18.0 seat W 30.0 arm H 24.5
total H 33.0 total W 36.0 total D 30.0

CAL 133, add \$405 List per unit
Meets BIFMA Seating Durability Test to 750 lbs per bariatric chair



9101GHD
133 lbs



BEHAVIORAL HEALTH & HEAVY DUTY Specialty Seating

TAILOR HD

Standard Features

- Separate seat and back
- No pass-through
- Perforations in the metal frame allow for drainage
- Wall-saving frame
- Roto-molded foot in RAL7037
- Tamper proof fastenings
- Ships assembled
- Ships 1 two seat per carton, 43 cu ft
- Ships 1 three seat per carton, 62 cu ft

Options

- Polyurethane arm caps available in Black (B), Taupe RAL 7006 (T) or Sterling Grey (G), add \$118 List per arm
- Nickel-plated non-removable nylon glides secured with LOCTITE®, add \$16 List
- Floor mounting straps available, call Customer Service
- Up to 40 lbs of additional weight per seat is available, call Customer Service
- Upholstered arms/seat/back can match or contrast
- Antibacterial and antimicrobial fabrics available
- CAL 133

Contact Spec Customer Service to railroad fabrics (specify repeat info and yardage requirement will be provided) and for repeats greater than 5" x 5"



Tailor HD Two Seat With Arms

COM 7.5 yds
 2.5 yds COM per two seater one-piece seat
 3.0 yds COM per two seater two-piece back (1.5 yds COM per single back)
 1.0 yds COM per arm

MODEL	COM	GR 1	GR 2	GR 3	GR 4	GR 5	GR 6
9102MHD	2447	2826	2957	3226	3605	3896	4274

Dimensions (inches)

seat H	18.0	seat W	23.0	arm H	24.5
total H	33.0	total W	52.0	total D	30.0

CAL 133, add \$555 List per unit
 Meets BIFMA Seating Durability Test to 450 lbs per two seater



9102MHD
175 lbs

Tailor HD Three Seat With Arms

COM 10.25 yds
 3.75 yds COM per three seater one-piece seat
 4.5 yds COM per three seater three-piece back (1.5 yds COM per single back)
 1.0 yds COM per arm

MODEL	COM	GR 1	GR 2	GR 3	GR 4	GR 5	GR 6
9103MHD	3267	3780	3958	4324	4838	5233	5747

Dimensions (inches)

seat H	18.0	seat W	23.0	arm H	24.5
total H	33.0	total W	75.0	total D	30.0

CAL 133, add \$757 List per unit
 Meets BIFMA Seating Durability Test to 675 lbs per three seater



9103MHD
231 lbs



BEHAVIORAL HEALTH & HEAVY DUTY Specialty Seating

TRAFFIC DINING

Standard Features

- Tabletop standard in Laminate with PVC Flat (PVF), 2MM or Self Edge (SE)
- Select from 15 standard laminates or choose any standard Wilsonart, Nevamar, Formica, Arborite and Pionite matte finish laminates at no upcharge. For other laminate please contact the factory for pricing.
- PVC Flat edge and 2mm Bio edge available in 38 solid colors. 2mm PVC edge available in wood grain to match 9 standard stains.
- Floor Mounting plates
- Tamperproof fasteners
- Welded steel end caps

Options

- 30" Bariatric seats are available. Contact factory for pricing
- Coated steel tabletop available. Contact factory for pricing
- CAL 133

Contact Spec Customer Service to railroad fabrics (specify repeat info and yardage requirement will be provided) and for repeats greater than 5" x 5"



Traffic Dining without arms, without upholstered cushions

N/A COM per single seat

MODEL	PRICE
7100NHD	4328

Dimensions (inches)

seat H	18.0	seat W	22.0	table top	30x48	table H	29.0
total H	33.75	total W	48.0	seat depth	17.0	total depth	74

Meets BIFMA Seating Durability Test to 500 lbs per chair

Traffic Dining without arms, with upholstered cushions

0.75 yd COM per single seat and back

MODEL	COM	GR 1	GR 2	GR 3	GR 4	GR 5	GR 6
7100UHD	4396	4546	4594	4722	4868	4982	5130

Dimensions (inches)

seat H	18.0	seat W	22.0	table top	30x48	table H	29.0
total H	33.75	total W	48.0	seat depth	17.0	total depth	74

Meets BIFMA Seating Durability Test to 500 lbs per chair

CAL 133, add \$245 List per unit





BEHAVIORAL HEALTH & HEAVY DUTY Specialty Seating

1000 SERIES HD

Standard Features

- One piece seat and back
- Fully welded 1.25" frame
- Added weight, Sled base
- Frame in any Spectone color
- Steel glides secured with LOCTITE®
- Tamperproof hardware
- Zippered covers glued shut, pulls removed
- Ships assembled
- Ships 1/carton 15 cu ft

Options

- Floor mounting glides, add \$50 List/chair
- CAL 133

Contact Spec Customer Service to railroad fabrics (specify repeat info and yardage requirement will be provided) and for repeats greater than 5" x 5"



1000 Series HD Armless Medium Back – Sled Base

1.25 yds COM per single seat and back

MODEL	COM	GR 1	GR 2	GR 3	GR 4	GR 5	GR 6
1014HD	1006	1073	1091	1138	1201	1250	1316

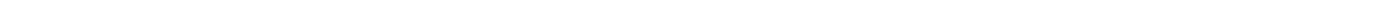
Dimensions (inches)

seat H	18.0	seat W	18.5	depth	22.0
total H	33.0	total W	18.5		

Meets BIFMA Seating Durability Test to 500 lbs per chair
 CAL 133, add \$57 List per chair



1014HD
46 lbs





BEHAVIORAL HEALTH & HEAVY DUTY Specialty Seating 2000 SERIES HD

Standard Features

- Fully welded 1.5" frame
- Added weight, Sled base
- Frame in any Spectone color
- Steel glides secured with LOCTITE®
- Tamperproof hardware
- Zippered covers glued shut, pulls removed
- Ships assembled
- Ships 1/carton 17 cu ft

Options

- Floor mounting glides, add \$50 List/chair
- CAL 133

Contact Spec Customer Service to railroad fabrics (specify repeat info and yardage requirement will be provided) and for repeats greater than 5" x 5"



2000 Series HD One Piece Single Seater with arms – Sled Base

COM 1.75 yds
1.75 yd COM per single seat and back

MODEL	COM	GR 1	GR 2	GR 3	GR 4	GR 5	GR 6
2201CHD	993	1074	1101	1154	1233	1295	1374

Dimensions (inches)

seat H	18.0	seat W	22.0	arm H	26.0
total H	35.0	total W	25.0	depth	26.5

Meets BIFMA Seating Durability Test to 500 lbs per seat
CAL 133, add \$102 List per seat



2201CHD
67 lbs

2000 Series HD Separate Seat and Back with arms – Sled Base

COM 1.75 yds
1.0 yd COM per single seat
0.75 yd COM per single back

MODEL	COM	GR 1	GR 2	GR 3	GR 4	GR 5	GR 6
2201CHDS	1174	1254	1282	1333	1413	1476	1554

Dimensions (inches)

seat H	18.0	seat W	22.0	arm H	26.0
total H	35.0	total W	25.0	depth	26.5

Meets BIFMA Seating Durability Test to 500 lbs per seat
CAL 133, add \$102 List per chair



2201CHDS
67 lbs



BEHAVIORAL HEALTH & HEAVY DUTY Specialty Tables



PRODUCT CODE

2424SQ-TR HD

Product Code

Specification

HD: Heavy Duty*

*The code for our heavy duty tables featured in the pages below is the same as a regular model of the table you are specifying. By adding the letters "HD" at the end of the product code, it lets us know the product is intended for a behavioral health environment and the features below will automatically be specified.



FEATURES

Tamper-Proof



Weighted

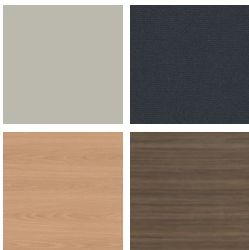


LOCTITE®-secured Glides



FINISHES

LAMINATE



Select from 15 standard laminates or choose any standard Wilsonart, Nevamar, Formica, Arborite and Pionite matte finish laminates at no upcharge

VENEER



Select from one of our 9 standard wood stains or stain-to-match at no upcharge

BASE



Select from one of our 76 standard Spectone colors

EDGE



Check out our website for a complete list of edge profiles.

BEHAVIORAL HEALTH & HEAVY DUTY Specialty Tables

DIGNITY

Standard Features

- Tops in laminate or veneer
- Select from 15 standard laminates or choose any standard Wilsonart, Nevamar, Formica, Arborite and Pionite matte finish laminates at no upcharge.
- Laminate tops with PVC Flat (PVF), Self Edge (SE), or hardwood (HB) edge
- 9 standard veneer and hardwood edge stains. Stain-to-match available at no upcharge.
- Tops utilize NU Green earth friendly core
- 18" height
- Non-removable steel levelling glides

Options

- Specify frame finish, Black (B), Sterling Grey (G) or Taupe RAL 7006 (T)
- Additional weight can be added, contact factory
- Non-standard laminates, contact Spec for pricing
- Floor mounting straps available, call Customer Service

Radius Corner Tables are recommended for open areas



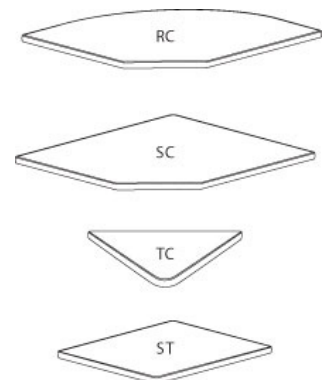
Freestanding Lounge Tables

Model	Laminate PVF/SE Edge	Laminate HB Edge	Veneer HB Edge	Weight	Cu.Ft.
DIGN - 24 x 24 SQ	1114	1289	1321	57	7.2
DIGN - 30 x 30 SQ	1251	1377	1424	74	13.5
DIGN - 36 x 36 SQ	1367	1563	1616	94	18
DIGN - 42 x 42 SQ	1685	1970	2057	116	24.5
DIGN - 48 x 48 SQ	1793	2044	2137	141	32
DIGN - 24 DIA	1088	1404	1438	45	7.2
DIGN - 30 DIA	1220	1534	1576	57	13.5
DIGN - 36 DIA	1348	1803	1882	71	18
DIGN - 42 DIA	1671	2182	2290	87	24.5
DIGN - 48 DIA	1666	2347	2465	104	32



Corner and Spacer Connecting Tables

Model	Laminate PVF/SE	Laminate HB Edge	Veneer HB Edge	Weight	Cu.Ft.
DIGNRC - 28 x 28 <i>Radius Corner Table</i>	622	779	964	31	2
DIGNSC - 28 x 28 <i>Square Corner Table</i>	622	748	893	32	2
DIGNTC - 45 degree <i>Corner Table</i>	622	779	964	26	2
DIGNST - 21 x 24 <i>Spacer Table</i>	477	649	787	27	2



BEHAVIORAL HEALTH & HEAVY DUTY Specialty Tables

DIGNITY2

Standard Features

- Tops in laminate or veneer
- Select from 15 standard laminates or choose any standard Wilsonart, Nevamar, Formica, Arborite and Pionite matte finish laminates at no upcharge.
- Laminate tops with PVC Flat (PVF), Self Edge (SE), or hardwood (HB) edge
- 9 standard veneer and hardwood edge stains. Stain-to-match available at no upcharge.
- Tops utilize NU Green earth friendly core
- 18" height
- Non-removable steel levelling glides

Radius Corner Tables are recommended for open areas

Options

- Additional weight can be added, contact factory
- Non-standard laminates, contact Spec for pricing
- Floor mounting straps available, call Customer Service



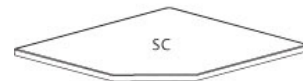
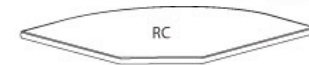
Freestanding Lounge Tables

Model	Laminate PVF/SE Edge	Laminate HB Edge	Veneer HB Edge	Weight	Cu.Ft.
DIGN2 - 24 x 24 SQ	1114	1289	1321	62	7.2
DIGN2 - 30 x 30 SQ	1251	1377	1424	80	13.5
DIGN2 - 36 x 36 SQ	1367	1563	1616	101	18
DIGN2 - 42 x 42 SQ	1685	1970	2057	124	24.5
DIGN2 - 48 x 48 SQ	1793	2044	2137	151	32
DIGN2 - 24 DIA	1088	1404	1438	49	7.2
DIGN2 - 30 DIA	1220	1534	1576	61	13.5
DIGN2 - 36 DIA	1348	1803	1882	76	18
DIGN2 - 42 DIA	1671	2182	2290	93	24.5
DIGN2 - 48 DIA	1722	2347	2465	111	32



Corner and Spacer Connecting Tables

Model	Laminate PVF/SE	Laminate HB Edge	Veneer HB Edge	Weight	Cu.Ft.
DIGN2RC - 28 x 28 <i>Radius Corner Table</i>	622	779	964	31	2
DIGN2SC - 28 x 28 <i>Square Corner Table</i>	622	748	893	32	2
DIGN2TC - 45 degree <i>Corner Table</i>	622	779	964	26	2
DIGN2ST - 21 x 24 <i>Spacer Table</i>	477	649	787	27	2



Dignity2 seating is available connected as 1, 2 and 3 seaters, with or without arms between, with corner or spacer tables. Above pricing includes connector bars.



BEHAVIORAL HEALTH & HEAVY DUTY Specialty Tables

DRUM HD, CUBE HD, OVAL HD

NOTES AND OPTIONS

- Select from 15 standard laminates or choose any standard Wilsonart, Nevamar, Formica, Arborite and Pionite matte finish laminates at no upcharge. For other laminate please contact the factory for pricing.
- 9 standard veneer and hardwood edge stains. Stain-to-match available at no upcharge.
- Other sizes are available. Contact the factory for pricing.
- Solid surface tops are available. Contact the factory for pricing.
- Standard heights: 16", 18", 20", 22".

MODEL	BASES		TOP SPECIFICATIONS		OPTIONS	LBS
	<i>Code</i>	<i>Qty.</i>	<i>Laminate</i>	<i>Veneer</i>	<i>Kickplate</i>	
			SE	SE	KP	
<i>Round</i>						
18D	DRMHD	1	696	735	50	78
24D	DRMHD	1	778	816	50	92
30D	DRMHD	1	968	1012	50	106
36D	DRMHD	1	1092	1136	50	121
42D	DRMHD	1	1206	1285	50	138
<i>Square</i>						
18 x 18SQ	CUBEHD	1	564	775	50	81
24 x 24SQ	CUBEHD	1	597	815	50	100
30 x 30SQ	CUBEHD	1	740	898	50	113
36 x 36SQ	CUBEHD	1	857	1326	50	150
<i>Oval</i>						
30 x 36	OVALHD	1	1382	1623	73	122
30 x 42	OVALHD	1	1559	1838	73	135
30 x 48	OVALHD	1	2181	2292	73	148



DRMHD

CUBEHD

OVALHD





BEHAVIORAL HEALTH & HEAVY DUTY Specialty Tables

TRUMPET HD, DISC HD

NOTES AND OPTIONS

- Select from 15 standard laminates or choose any standard Wilsonart, Nevamar, Formica, Arborite and Pionite matte finish laminates at no upcharge. For other laminate please contact the factory for pricing.
- 9 standard veneer and hardwood edge stains. Stain-to-match available at no upcharge.
- Standard table height: 29". Customs available.
- All bases are standard with floor leveling glides.
- Chrome bases may be available as an upcharge. Please contact the factory.

MODEL <i>Size / Shape</i>	BASES		TOP SPECIFICATIONS						OPTIONS	MOBILITY	LBS	
	Code	#of	<i>For Laminate Top</i>			<i>For Veneer Top</i>						
			SE PVF 2MM	HF HB	HBV HBVR HBG	HF2 HB2 HKN4 HKNR4 HBG2	HF HB HBV HBVR HBG	HF2 HB2 HKN4 HKNR4 HBG2				
 24 DIA	TRHD	1	816	1131	1167	1261	1313	1412			99	
	DISCHD	1	1028	1343	1379	1473	1525	1624			116	
30 DIA	TRHD	1	906	1220	1261	1453	1405	1549			109	
	DISCHD	1	1118	1432	1473	1665	1617	1761			126	
36 DIA	TRHD	1	993	1447	1526	1683	1732	1933			120	
	DISCHD	1	1205	1659	1738	1895	1944	2145			137	
42 DIA	TRHD	1	1245	1755	1862	2096	2120	2397			134	
	DISCHD	1	1457	1967	2074	2308	2332	2609			161	
48 DIA	TRHD	1	1266	1949	2066	2184	2601	2955			150	
	DISCHD	1	1478	2161	2278	2396	2813	3167			177	
 24X24 SQ	TRHD	1	841	1015	1048	1109	1151	1299			99	
	30X30 SQ	TRHD	1	937	1063	1109	1266	1209	1412			106
	DISCHD	1	1149	1275	1321	1478	1421	1624			136	
	36X36 SQ	TRHD	1	1012	1208	1261	1447	1453	1630			120
	DISCHD	1	1224	1420	1473	1659	1665	1842			147	



Weighted Trumpet Base



Weighted Disc Base



Weighted Trumpet Base
Lounge Height



BEHAVIORAL HEALTH & HEAVY DUTY Specialty Tables

TRAFFIC DINING

Standard Features

- Tabletop standard in Laminate with PVC Flat (PVF), 2MM or Self Edge (SE)
- Select from 15 standard laminates or choose any standard Wilsonart, Nevamar, Formica, Arborite and Pionite matte finish laminates at no upcharge. For other laminate please contact the factory for pricing.
- PVC Flat edge and 2mm Bio edge available in 38 solid colors. 2mm PVC edge available in wood grain to match 9 standard stains.
- Floor Mounting plates
- Tamperproof fasteners
- Welded steel end caps

Options

- 30" Bariatric seats are available. Contact factory for pricing
- Coated steel tabletop available. Contact factory for pricing
- CAL 133

Contact Spec Customer Service to railroad fabrics (specify repeat info and yardage requirement will be provided) and for repeats greater than 5" x 5"



Traffic Dining without arms, without upholstered cushions

N/A COM per single seat

MODEL	PRICE
7100NHD	4328

Dimensions (inches)

seat H	18.0	seat W	22.0	table top	30x48	table H	29.0
total H	33.75	total W	48.0	seat depth	17.0	total depth	74

Exceeds BIFMA Seating Durability Test to 500 lbs per chair

Traffic Dining without arms, with upholstered cushions

0.75 yd COM per single seat and back

MODEL	COM	GR 1	GR 2	GR 3	GR 4	GR 5	GR 6
7100UHD	4396	4546	4594	4722	4868	4982	5130

Dimensions (inches)

seat H	18.0	seat W	22.0	table top	30x48	table H	29.0
total H	33.75	total W	48.0	seat depth	17.0	total depth	74

Exceeds BIFMA Seating Durability Test to 500 lbs per chair

CAL 133, add \$245 List per unit

