

## BEHAVIORAL HEALTH & HEAVY DUTY Specialty Seating



### PRODUCT CODE

4201M HD

Product Code

Specification

HD: Heavy Duty\*

\*The code for our heavy duty seating options featured in the pages below is the same as a regular model of the chair you are specifying. By adding the letters "HD" at the end of the product code, it lets us know the product is intended for a behavioral health environment and the features below will automatically be specified.

### FEATURES

#### Tamper-Proof



#### Weighted



#### LOCTITE®-secured Glides



#### Secured Zippers



#### Springless Seat Cushion



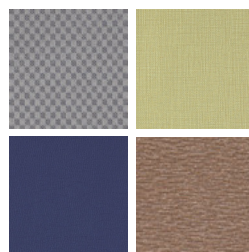
### FINISHES

#### FRAME



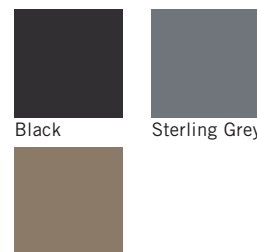
Select from one of our 76 standard Spectone colors

#### FABRIC



Select fabrics from one of our textile partners

#### ARMS



Taupe

## BEHAVIORAL HEALTH & HEAVY DUTY Specialty Seating

### CALVIN HD

#### Standard Features

- Separate seat and back
- Polyurethane arms
- Fully welded
- Added weight, Sled base
- Frame in any Spectone color
- Injection molded plastic glides secured with LOCTITE®
- Tamperproof hardware
- Ships assembled
- Ships 1/carton 15 cu ft, bariatric ships 1/carton 20 cu ft

#### Options

- Polyurethane arms are available in Black, Sterling Grey and Taupe (RAL 7006)
- CAL 133

Contact Spec Customer Service to railroad fabrics (specify repeat info and yardage requirement will be provided) and for repeats greater than 5" x 5"



#### Calvin HD Single Seater with arms

COM 1.75 yds  
0.75 yd COM per single seat  
1.0 yd COM per single back

| MODEL          | COM         | GR 1        | GR 2        | GR 3        | GR 4        | GR 5        | GR 6        |
|----------------|-------------|-------------|-------------|-------------|-------------|-------------|-------------|
| <b>8101MHD</b> | <b>1433</b> | <b>1537</b> | <b>1569</b> | <b>1641</b> | <b>1746</b> | <b>1826</b> | <b>1933</b> |

#### Dimensions (inches)

|         |       |         |      |       |      |
|---------|-------|---------|------|-------|------|
| seat H  | 18.0  | seat W  | 21.0 | arm H | 25.0 |
| total H | 33.75 | total W | 25.0 | depth | 26.0 |

Exceeds BIFMA Seating Durability Test to 500 lbs per chair  
CAL 133, add \$120 List per chair



**8101MHD**  
64 lbs

#### Calvin HD Bariatric with arms

COM 3.0 yds  
1.5 yd COM per single seat  
1.5 yd COM per single back

| MODEL          | COM         | GR 1        | GR 2        | GR 3        | GR 4        | GR 5        | GR 6        |
|----------------|-------------|-------------|-------------|-------------|-------------|-------------|-------------|
| <b>8101GHD</b> | <b>1757</b> | <b>1934</b> | <b>1991</b> | <b>2112</b> | <b>2293</b> | <b>2430</b> | <b>2615</b> |

#### Dimensions (inches)

|         |       |         |      |       |      |
|---------|-------|---------|------|-------|------|
| seat H  | 18.0  | seat W  | 30.0 | arm H | 25.0 |
| total H | 33.75 | total W | 34.0 | depth | 26.0 |

Exceeds BIFMA Seating Durability Test to 750 lbs per seat  
CAL 133, add \$150 List per chair



**8101GHD**  
74 lbs

## BEHAVIORAL HEALTH & HEAVY DUTY Specialty Seating

### COMPANION HD

#### Standard Features

- Separate seat and back
- Polyurethane arms
- Fully welded 1.75" frame
- Added weight, Sled base
- Frame in any Spectone color
- Steel glides secured with LOCTITE®
- Tamperproof hardware
- Zippered covers glued shut, pulls removed
- Ships assembled
- Medium Back ships 1/carton 15 cu ft
- Highback ships 1/carton 19 cu ft

#### Options

- Polyurethane arms are available in Black, Sterling Grey and Taupe (RAL 7006)
- Floor mounting glides, add \$48 List/chair
- CAL 133

Contact Spec™ Customer Service to railroad fabrics (specify repeat info and yardage requirement will be provided) and for repeats greater than 5" x 5"



#### Companion HD Medium Back armless – Sled Base

COM 2.0 yds

1.0 yd COM per single seat

1.0 yd COM per single back

| MODEL          | COM         | GR 1        | GR 2        | GR 3        | GR 4        | GR 5        | GR 6        |
|----------------|-------------|-------------|-------------|-------------|-------------|-------------|-------------|
| <b>4101MHD</b> | <b>1284</b> | <b>1399</b> | <b>1435</b> | <b>1514</b> | <b>1627</b> | <b>1714</b> | <b>1830</b> |

Dimensions (inches)

|         |      |         |      |       |      |  |  |
|---------|------|---------|------|-------|------|--|--|
| seat H  | 18.0 | seat W  | 21.0 |       |      |  |  |
| total H | 32.5 | total W | 25.0 | depth | 27.0 |  |  |

Exceeds BIFMA Seating Durability Test to 500 lbs per chair  
CAL 133, add \$108 List per chair



**4101MHD**  
65 lbs

#### Companion HD Medium Back with arms – Sled Base

COM 2.0 yds

1.0 yd COM per single seat

1.0 yd COM per single back

| MODEL          | COM         | GR 1        | GR 2        | GR 3        | GR 4        | GR 5        | GR 6        |
|----------------|-------------|-------------|-------------|-------------|-------------|-------------|-------------|
| <b>4201MHD</b> | <b>1507</b> | <b>1621</b> | <b>1658</b> | <b>1737</b> | <b>1849</b> | <b>1935</b> | <b>2052</b> |

For steel arms add suffix S and \$70

Dimensions (inches)

|         |      |         |      |       |      |  |  |
|---------|------|---------|------|-------|------|--|--|
| seat H  | 18.0 | seat W  | 21.0 | arm H | 27.0 |  |  |
| total H | 32.5 | total W | 26.0 | depth | 27.0 |  |  |

Exceeds BIFMA Seating Durability Test to 500 lbs per seat  
CAL 133, add \$108 List per chair



**4201MHD**  
65 lbs

## BEHAVIORAL HEALTH & HEAVY DUTY Specialty Seating

### COMPANION HD

#### Standard Features

- Separate seat and back
- Polyurethane arms
- Fully welded 1.75" frame
- Added weight, Sled base
- Frame in any Spectone color
- Steel glides secured with LOCTITE®
- Tamperproof hardware
- Zippered covers glued shut, pulls removed
- Ships assembled
- Medium Back ships 1/carton 15 cu ft
- Highback ships 1/carton 19 cu ft

#### Options

- Polyurethane arms are available in Black, Sterling Grey and Taupe (RAL 7006)
- Floor mounting glides, add \$48 List/chair
- CAL 133

Contact Spec Customer Service to railroad fabrics (specify repeat info and yardage requirement will be provided) and for repeats greater than 5" x 5"



#### Companion HD Highback with arms – Sled Base

COM 2.25 yds

1.0 yd COM per single seat

1.25 yd COM per single back

| MODEL          | COM         | GR 1        | GR 2        | GR 3        | GR 4        | GR 5        | GR 6        |
|----------------|-------------|-------------|-------------|-------------|-------------|-------------|-------------|
| <b>4201HHD</b> | <b>1567</b> | <b>1692</b> | <b>1737</b> | <b>1820</b> | <b>1948</b> | <b>2043</b> | <b>2169</b> |

For steel arms add suffix S and \$70

Dimensions (inches)

|         |      |         |      |       |      |
|---------|------|---------|------|-------|------|
| seat H  | 18.0 | seat W  | 21.0 | arm H | 27.0 |
| total H | 45.0 | total W | 26.0 | depth | 27.0 |

Exceeds BIFMA Seating Durability Test to 500 lbs per seat  
CAL 133, add \$134 List per chair



**4201HHD**  
71 lbs

#### Companion HD Bariatric with arms – Sled Base

COM 3.25 yds

1.5 yd COM per single seat

1.75 yd COM per single back

| MODEL          | COM         | GR 1        | GR 2        | GR 3        | GR 4        | GR 5        | GR 6        |
|----------------|-------------|-------------|-------------|-------------|-------------|-------------|-------------|
| <b>4201GHD</b> | <b>1842</b> | <b>2013</b> | <b>2069</b> | <b>2187</b> | <b>2355</b> | <b>2488</b> | <b>2661</b> |

For steel arms add suffix S and \$70

Dimensions (inches)

|         |      |         |      |       |      |
|---------|------|---------|------|-------|------|
| seat H  | 18.0 | seat W  | 30.0 | arm H | 27.0 |
| total H | 32.5 | total W | 35.0 | depth | 27.0 |

Exceeds BIFMA Seating Durability Test to 750 lbs per seat  
CAL 133, add \$163 List per chair



**4201GHD**  
78 lbs

## BEHAVIORAL HEALTH & HEAVY DUTY Specialty Seating

### COOPER DWIGHT HD

#### Standard Features

- Separate seat and back
- Laminate or upholstered side panels on inside and outside of arm in various combinations
- Upholstered side panels can match or contrast seat/back
- Select from 15 standard laminates or choose any standard Wilsonart, Nevamar, Formica, Arborite and Pionite matte finish laminates at no upcharge.
- Fully welded frame with 1.625" steel legs and 1.25" steel tubular sleds
- Frame in any Spectone color
- Steel glides secured with LOCTITE®
- Replaceable seats
- No protruding legs or hardware
- Tamper proof fastenings
- Ships assembled, 1/carton 15 cu ft

#### Options

- Wood or polyurethane arm caps, in flat (WF or PF) or rounded (WR or PR) profile
- Wood arm caps in Beech, in any of 9 standard stains or stain-to-match at no upcharge
- Round polyurethane arm caps available in Black, Sterling Grey and Taupe (RAL 7006)
- Flat polyurethane arm caps available in Black only
- KYDEX® flat arms available in Black (B) or Taupe RAL 7006 (T) or Sterling Grey (G)
- Floor mounting straps available, call Customer Service
- Additional weight may be available, call Customer Service
- Antibacterial and antimicrobial fabrics available
- Different fabric on seat and back at no upcharge
- CAL 133

Contact Spec™ Customer Service to railroad fabrics (specify repeat info and yardage requirement will be provided) and for repeats greater than 5" x 5"



#### Cooper Dwight HD Single Seater with arms

COM 1.75 yds

0.75 yd COM per single seat / 1.0 yd COM per single back

| MODEL             | COM         | GR 1        | GR 2        | GR 3        | GR 4        | GR 5        | GR 6        |
|-------------------|-------------|-------------|-------------|-------------|-------------|-------------|-------------|
| <b>6101MHD-LL</b> | <b>1376</b> | <b>1478</b> | <b>1512</b> | <b>1583</b> | <b>1688</b> | <b>1770</b> | <b>1876</b> |

Side panel – laminated, outside and inside

CAL 133, add \$120 List per chair

COM 2.5 yds

0.75 yd COM per single seat / 1.0 yd COM per single back / 0.375 yd COM per panel

| MODEL             | COM         | GR 1        | GR 2        | GR 3        | GR 4        | GR 5        | GR 6        |
|-------------------|-------------|-------------|-------------|-------------|-------------|-------------|-------------|
| <b>6101MHD-LU</b> | <b>1448</b> | <b>1592</b> | <b>1639</b> | <b>1739</b> | <b>1886</b> | <b>1999</b> | <b>2148</b> |

Side panel – laminated, outside, upholstered inside

CAL 133, add \$204 List per chair

COM 2.5 yds

0.75 yd COM per single seat / 1.0 yd COM per single back / 0.375 yd COM per panel

| MODEL             | COM         | GR 1        | GR 2        | GR 3        | GR 4        | GR 5        | GR 6        |
|-------------------|-------------|-------------|-------------|-------------|-------------|-------------|-------------|
| <b>6101MHD-UL</b> | <b>1448</b> | <b>1592</b> | <b>1639</b> | <b>1739</b> | <b>1886</b> | <b>1999</b> | <b>2148</b> |

Side panel – upholstered outside, laminated inside

CAL 133, add \$204 List per chair

COM 3.25 yds

0.75 yd COM per single seat / 1.0 yd COM per single back / 0.75 yd COM per panel

| MODEL             | COM         | GR 1        | GR 2        | GR 3        | GR 4        | GR 5        | GR 6        |
|-------------------|-------------|-------------|-------------|-------------|-------------|-------------|-------------|
| <b>6101MHD-UU</b> | <b>1486</b> | <b>1671</b> | <b>1733</b> | <b>1861</b> | <b>2049</b> | <b>2194</b> | <b>2387</b> |

Side panel – upholstered, outside and inside

CAL 133, add \$284 List per chair

Dimensions (inches)

|         |       |         |       |       |      |
|---------|-------|---------|-------|-------|------|
| seat H  | 18.0  | seat W  | 21.0  | arm H | 25.0 |
| total H | 33.75 | total W | 25.25 | depth | 25.0 |

**For KYDEX® flat arms add suffix K and \$274**

Dynamic load tested to 500 lbs per chair



**6101MHD-LL**  
75 lbs

## BEHAVIORAL HEALTH & HEAVY DUTY Specialty Seating

### COOPER DWIGHT HD

#### Standard Features

- Separate seat and back
- Laminate or upholstered side panels on inside and outside of arm in various combinations
- Upholstered side panels can match or contrast seat/back
- Select from 15 standard laminates or choose any standard Wilsonart, Nevamar, Formica, Arborite and Pionite matte finish laminates at no upcharge.
- Fully welded frame with 1.625" steel legs and 1.25" steel tubular sleds
- Frame in any Spectone color
- Steel glides secured with LOCTITE®
- Replaceable seats
- No protruding legs or hardware
- Tamper proof fastenings
- Ships assembled, 1/carton 15 cu ft

#### Options

- Wood or polyurethane arm caps, in flat (WF or PF) or rounded (WR or PR) profile
- Wood arm caps in Beech, in any of 9 standard stains or stain-to-match at no upcharge
- Round polyurethane arm caps available in Black, Sterling Grey and Taupe (RAL 7006)
- Flat polyurethane arm caps available in Black only
- KYDEX® flat arms available in Black (B) or Taupe RAL 7006 (T) or Sterling Grey (G)
- Floor mounting straps available, call Customer Service
- Additional weight may be available, call Customer Service
- Antibacterial and antimicrobial fabrics available
- Different fabric on seat and back at no upcharge
- CAL 133

Contact Spec Customer Service to railroad fabrics (specify repeat info and yardage requirement will be provided) and for repeats greater than 5" x 5"



#### Cooper Dwight HD Single Seater with no arms

COM 1.75 yds

0.75 yd COM per single seat / 1.0 yd COM per single back

| MODEL               | COM         | GR 1        | GR 2        | GR 3        | GR 4        | GR 5        | GR 6        |
|---------------------|-------------|-------------|-------------|-------------|-------------|-------------|-------------|
| <b>6101MHD-LL-N</b> | <b>1332</b> | <b>1435</b> | <b>1470</b> | <b>1540</b> | <b>1645</b> | <b>1726</b> | <b>1832</b> |

Side panel – laminated, outside and inside

CAL 133, add \$120 List per chair

COM 2.5 yds

0.75 yd COM per single seat / 1.0 yd COM per single back / 0.375 yd COM per panel

| MODEL               | COM         | GR 1        | GR 2        | GR 3        | GR 4        | GR 5        | GR 6        |
|---------------------|-------------|-------------|-------------|-------------|-------------|-------------|-------------|
| <b>6101MHD-LU-N</b> | <b>1394</b> | <b>1527</b> | <b>1569</b> | <b>1662</b> | <b>1796</b> | <b>1900</b> | <b>2037</b> |

Side panel – laminated, outside, upholstered inside

CAL 133, add \$204 List per chair

COM 2.5 yds

0.75 yd COM per single seat / 1.0 yd COM per single back / 0.375 yd COM per panel

| MODEL               | COM         | GR 1        | GR 2        | GR 3        | GR 4        | GR 5        | GR 6        |
|---------------------|-------------|-------------|-------------|-------------|-------------|-------------|-------------|
| <b>6101MHD-UL-N</b> | <b>1394</b> | <b>1527</b> | <b>1569</b> | <b>1662</b> | <b>1796</b> | <b>1900</b> | <b>2037</b> |

Side panel – upholstered outside, laminated inside

CAL 133, add \$204 List per chair

COM 3.25 yds

0.75 yd COM per single seat / 1.0 yd COM per single back / 0.75 yd COM per panel

| MODEL               | COM         | GR 1        | GR 2        | GR 3        | GR 4        | GR 5        | GR 6        |
|---------------------|-------------|-------------|-------------|-------------|-------------|-------------|-------------|
| <b>6101MHD-UU-N</b> | <b>1432</b> | <b>1594</b> | <b>1647</b> | <b>1759</b> | <b>1924</b> | <b>2051</b> | <b>2218</b> |

Side panel – upholstered, outside and inside

CAL 133, add \$284 List per chair

Dimensions (inches)

|         |       |         |       |       |      |
|---------|-------|---------|-------|-------|------|
| seat H  | 18.0  | seat W  | 21.0  | arm H | 20.0 |
| total H | 33.75 | total W | 25.25 | depth | 25.0 |

**For KYDEX® flat arms add suffix K and \$274**

Dynamic load tested to 500 lbs per chair



**6101MHD-LL-N**  
70 lbs

# BEHAVIORAL HEALTH & HEAVY DUTY Specialty Seating

## DIGNITY

### Standard Features

- Separate seat and back
- Self-skinned polyurethane perimeter arms
- Upholstered side panels can match or contrast seat/back
- Laminate or upholstered side panels on inside and outside of arm
- Select from 15 standard laminates or choose any standard Wilsonart, Nevamar, Formica, Arborite and Pionite matte finish laminates at no upcharge.
- No protruding legs or hardware
- Tamper proof fastenings
- Non-removable steel levelling glides
- Ships assembled
- Ships 1/carton 15 cu ft

Contact Spec Customer Service to railroad fabrics (specify repeat info and yardage requirement will be provided) and for repeats greater than 5" x 5"

### Options

- Specify frame finish, Black (B), Sterling Grey (G) or Taupe RAL 7006 (T)
- Add up to 20 lbs of additional weight per seat, add \$162 List per seat
- Non-standard laminates, contact Spec for pricing
- Antibacterial and antimicrobial fabrics available
- Floor mounting straps available, call Customer Service
- Connecting and freestanding tables
- CAL 133
- Elimination of separated seat and back available with either solid or perforated seat pan, call Customer Service



### Single Seater with arms

COM 1.75 yds

0.75 yd COM per single seat / 1.0 yd COM per single back

| MODEL           | COM         | GR 1        | GR 2        | GR 3        | GR 4        | GR 5        | GR 6        |
|-----------------|-------------|-------------|-------------|-------------|-------------|-------------|-------------|
| <b>4501M-LL</b> | <b>1474</b> | <b>1567</b> | <b>1597</b> | <b>1658</b> | <b>1749</b> | <b>1819</b> | <b>1909</b> |

Arm panel – laminated, outside and inside

CAL 133, add \$120 List per chair

COM 2.75 yds

0.75 yd COM per single seat / 1.0 yd COM per single back / .5 yd COM per panel

| MODEL           | COM         | GR 1        | GR 2        | GR 3        | GR 4        | GR 5        | GR 6        |
|-----------------|-------------|-------------|-------------|-------------|-------------|-------------|-------------|
| <b>4501M-LU</b> | <b>1591</b> | <b>1736</b> | <b>1783</b> | <b>1879</b> | <b>2023</b> | <b>2129</b> | <b>2274</b> |

Arm panel – laminated, outside, upholstered inside

CAL 133, add \$204 List per chair

COM 2.75 yds

0.75 yd COM per single seat / 1.0 yd COM per single back / .5 yd COM per panel

| MODEL           | COM         | GR 1        | GR 2        | GR 3        | GR 4        | GR 5        | GR 6        |
|-----------------|-------------|-------------|-------------|-------------|-------------|-------------|-------------|
| <b>4501M-UL</b> | <b>1591</b> | <b>1736</b> | <b>1783</b> | <b>1879</b> | <b>2023</b> | <b>2129</b> | <b>2274</b> |

Arm panel – upholstered outside, laminated inside

CAL 133, add \$204 List per chair

COM 3.75 yds

0.75 yd COM per single seat / 1.0 yd COM per single back / 1.0 yd COM per panel

| MODEL           | COM         | GR 1        | GR 2        | GR 3        | GR 4        | GR 5        | GR 6        |
|-----------------|-------------|-------------|-------------|-------------|-------------|-------------|-------------|
| <b>4501M-UU</b> | <b>1707</b> | <b>1904</b> | <b>1968</b> | <b>2100</b> | <b>2293</b> | <b>2442</b> | <b>2637</b> |

Arm panel – upholstered, outside and inside

CAL 133, add \$284 List per chair

Dimensions (inches)

|         |       |         |      |       |       |
|---------|-------|---------|------|-------|-------|
| seat H  | 18.0  | seat W  | 23.0 | arm H | 25.25 |
| total H | 32.75 | total W | 29.0 | depth | 29.75 |

Exceeds BIFMA Seating Durability Test to 500 lbs per chair



**4501M**  
95 lbs



## BEHAVIORAL HEALTH & HEAVY DUTY Specialty Seating

### DIGNITY

#### Standard Features

- Separate seat and back
- Self-skinned polyurethane perimeter arms
- Upholstered side panels can match or contrast seat/back
- Laminate or upholstered side panels on inside and outside of arm
- Select from 15 standard laminates or choose any standard Wilsonart, Nevamar, Formica, Arborite and Pionite matte finish laminates at no upcharge.
- No protruding legs or hardware
- Tamper proof fastenings
- Non-removable steel levelling glides
- Ships assembled
- Ships 1/carton 26 cu ft

Contact Spec Customer Service to railroad fabrics (specify repeat info and yardage requirement will be provided) and for repeats greater than 5" x 5"

#### Options

- Specify frame finish, Black (B), Sterling Grey (G) or Taupe RAL 7006 (T)
- Add up to 20 lbs of additional weight per seat, add \$162 List per seat
- Non-standard laminates, contact Spec for pricing
- Antibacterial and antimicrobial fabrics available
- Floor mounting straps available, call Customer Service
- Connecting and freestanding tables
- CAL 133
- Elimination of separated seat and back available with either solid or perforated seat pan, call Customer Service



#### Two Seater with outside arms

COM 3.5 yds

0.75 yd COM per single seat / 1.0 yd COM per single back

| MODEL           | COM         | GR 1        | GR 2        | GR 3        | GR 4        | GR 5        | GR 6        |
|-----------------|-------------|-------------|-------------|-------------|-------------|-------------|-------------|
| <b>4502M-LL</b> | <b>2166</b> | <b>2349</b> | <b>2409</b> | <b>2531</b> | <b>2714</b> | <b>2851</b> | <b>3035</b> |

Arm panel – laminated, outside and inside

CAL 133, add \$240 List per two seater

COM 4.5 yds

0.75 yd COM per single seat / 1.0 yd COM per single back / .5 yd COM per panel

| MODEL           | COM         | GR 1        | GR 2        | GR 3        | GR 4        | GR 5        | GR 6        |
|-----------------|-------------|-------------|-------------|-------------|-------------|-------------|-------------|
| <b>4502M-LU</b> | <b>2282</b> | <b>2518</b> | <b>2597</b> | <b>2751</b> | <b>2988</b> | <b>3165</b> | <b>3399</b> |

Arm panel – laminated, outside, upholstered inside

CAL 133, add \$324 List per two seater

COM 4.5 yds

0.75 yd COM per single seat / 1.0 yd COM per single back / .5 yd COM per panel

| MODEL           | COM         | GR 1        | GR 2        | GR 3        | GR 4        | GR 5        | GR 6        |
|-----------------|-------------|-------------|-------------|-------------|-------------|-------------|-------------|
| <b>4502M-UL</b> | <b>2282</b> | <b>2518</b> | <b>2597</b> | <b>2751</b> | <b>2988</b> | <b>3165</b> | <b>3399</b> |

Arm panel – upholstered outside, laminated inside

CAL 133, add \$324 List per two seater

COM 5.5 yds

0.75 yd COM per single seat / 1.0 yd COM per single back / 1.0 yd COM per panel

| MODEL           | COM         | GR 1        | GR 2        | GR 3        | GR 4        | GR 5        | GR 6        |
|-----------------|-------------|-------------|-------------|-------------|-------------|-------------|-------------|
| <b>4502M-UU</b> | <b>2397</b> | <b>2686</b> | <b>2781</b> | <b>2972</b> | <b>3258</b> | <b>3475</b> | <b>3766</b> |

Arm panel – upholstered, outside and inside

CAL 133, add \$408 List per two seater

Dimensions (inches)

|         |       |         |      |       |       |
|---------|-------|---------|------|-------|-------|
| seat H  | 18.0  | seat W  | 46.0 | arm H | 25.25 |
| total H | 32.75 | total W | 52.0 | depth | 29.75 |

Exceeds BIFMA Seating Durability Test to 750 lbs per two seater



**4502M**  
150 lbs



## BEHAVIORAL HEALTH & HEAVY DUTY Specialty Seating

### DIGNITY

#### Standard Features

- Separate seat and back
- Self-skinned polyurethane perimeter arms
- Upholstered side panels can match or contrast seat/back
- Laminate or upholstered side panels on inside and outside of arm
- Select from 15 standard laminates or choose any standard Wilsonart, Nevamar, Formica, Arborite and Pionite matte finish laminates at no upcharge.
- No protruding legs or hardware
- Tamper proof fastenings
- Non-removable steel levelling glides
- Ships assembled
- Ships 1/carton 39 cu ft

Contact Spec Customer Service to railroad fabrics (specify repeat info and yardage requirement will be provided) and for repeats greater than 5" x 5"

#### Options

- Specify frame finish, Black (B), Sterling Grey (G) or Taupe RAL 7006 (T)
- Add up to 20 lbs of additional weight per seat, add \$162 List per seat
- Non-standard laminates, contact Spec for pricing
- Antibacterial and antimicrobial fabrics available
- Floor mounting straps available, call Customer Service
- Connecting and freestanding tables
- CAL 133
- Elimination of separated seat and back available with either solid or perforated seat pan, call Customer Service

#### Three Seater with outside arms

COM 5.25 yds

0.75 yd COM per single seat / 1.0 yd COM per single back

| MODEL           | COM         | GR 1        | GR 2        | GR 3        | GR 4        | GR 5        | GR 6        |
|-----------------|-------------|-------------|-------------|-------------|-------------|-------------|-------------|
| <b>4503M-LL</b> | <b>2856</b> | <b>3132</b> | <b>3224</b> | <b>3406</b> | <b>3680</b> | <b>3886</b> | <b>4162</b> |

Arm panel – laminated, outside and inside

CAL 133, add \$360 List per three seater

COM 6.25 yds

0.75 yd COM per single seat / 1.0 yd COM per single back / .5 yd COM per panel

| MODEL           | COM         | GR 1        | GR 2        | GR 3        | GR 4        | GR 5        | GR 6        |
|-----------------|-------------|-------------|-------------|-------------|-------------|-------------|-------------|
| <b>4503M-LU</b> | <b>2971</b> | <b>3300</b> | <b>3408</b> | <b>3628</b> | <b>3953</b> | <b>4197</b> | <b>4526</b> |

Arm panel – laminated, outside, upholstered inside

CAL 133, add \$444 List per three seater

COM 6.25 yds

0.75 yd COM per single seat / 1.0 yd COM per single back / .5 yd COM per panel

| MODEL           | COM         | GR 1        | GR 2        | GR 3        | GR 4        | GR 5        | GR 6        |
|-----------------|-------------|-------------|-------------|-------------|-------------|-------------|-------------|
| <b>4503M-UL</b> | <b>2971</b> | <b>3300</b> | <b>3408</b> | <b>3628</b> | <b>3953</b> | <b>4197</b> | <b>4526</b> |

Arm panel – upholstered outside, laminated inside

CAL 133, add \$444 List per three seater

COM 7.25 yds

0.75 yd COM per single seat / 1.0 yd COM per single back / 1.0 yd COM per panel

| MODEL           | COM         | GR 1        | GR 2        | GR 3        | GR 4        | GR 5        | GR 6        |
|-----------------|-------------|-------------|-------------|-------------|-------------|-------------|-------------|
| <b>4503M-UU</b> | <b>3088</b> | <b>3470</b> | <b>3595</b> | <b>3848</b> | <b>4223</b> | <b>4509</b> | <b>4892</b> |

Arm panel – upholstered, outside and inside

CAL 133, add \$528 List per three seater

Dimensions (inches)

|         |       |         |      |       |       |
|---------|-------|---------|------|-------|-------|
| seat H  | 18.0  | seat W  | 69.0 | arm H | 25.25 |
| total H | 32.75 | total W | 75.0 | depth | 29.75 |

Exceeds BIFMA Seating Durability Test to 1000 lbs per three seater



**4503M**  
205 lbs

## BEHAVIORAL HEALTH & HEAVY DUTY Specialty Seating

### DIGNITY

#### Standard Features

- Separate seat and back
- Self-skinned polyurethane perimeter arms
- Upholstered side panels can match or contrast seat/back
- Laminate or upholstered side panels on inside and outside of arm
- Select from 15 standard laminates or choose any standard Wilsonart, Nevamar, Formica, Arborite and Pionite matte finish laminates at no upcharge.
- No protruding legs or hardware
- Tamper proof fastenings
- Non-removable steel levelling glides
- Ships assembled
- Ships 1/carton 20 cu ft

Contact Spec Customer Service to railroad fabrics (specify repeat info and yardage requirement will be provided) and for repeats greater than 5" x 5"

#### Options

- Specify frame finish, Black (B), Sterling Grey (G) or Taupe RAL 7006 (T)
- Add up to 20 lbs of additional weight per seat, add \$162 List per seat
- Non-standard laminates, contact Spec for pricing
- Antibacterial and antimicrobial fabrics available
- Floor mounting straps available, call Customer Service
- Connecting and freestanding tables
- CAL 133
- Elimination of separated seat and back available with either solid or perforated seat pan, call Customer Service



#### Bariatric Single Seater with arms

COM 3.25 yds

1.5 yd COM per single seat / 1.75 yd COM per single back

| MODEL           | COM         | GR 1        | GR 2        | GR 3        | GR 4        | GR 5        | GR 6        |
|-----------------|-------------|-------------|-------------|-------------|-------------|-------------|-------------|
| <b>4501G-LL</b> | <b>1907</b> | <b>2079</b> | <b>2134</b> | <b>2247</b> | <b>2417</b> | <b>2546</b> | <b>2716</b> |

Arm panel – laminated, outside and inside

CAL 133, add \$154 List per chair

COM 4.25 yds

1.5 yd COM per single seat / 1.75 yd COM per single back / .5 yd COM per panel

| MODEL           | COM         | GR 1        | GR 2        | GR 3        | GR 4        | GR 5        | GR 6        |
|-----------------|-------------|-------------|-------------|-------------|-------------|-------------|-------------|
| <b>4501G-LU</b> | <b>2024</b> | <b>2247</b> | <b>2320</b> | <b>2467</b> | <b>2688</b> | <b>2855</b> | <b>3078</b> |

Arm panel – laminated, outside, upholstered inside

CAL 133, add \$233 List per chair

COM 4.25 yds

1.5 yd COM per single seat / 1.75 yd COM per single back / .5 yd COM per panel

| MODEL           | COM         | GR 1        | GR 2        | GR 3        | GR 4        | GR 5        | GR 6        |
|-----------------|-------------|-------------|-------------|-------------|-------------|-------------|-------------|
| <b>4501G-UL</b> | <b>2024</b> | <b>2247</b> | <b>2320</b> | <b>2467</b> | <b>2688</b> | <b>2855</b> | <b>3078</b> |

Arm panel – upholstered outside, laminated inside

CAL 133, add \$233 List per chair

COM 5.25 yds

1.5 yd COM per single seat / 1.75 yd COM per single back / 1.0 yd COM per panel

| MODEL           | COM         | GR 1        | GR 2        | GR 3        | GR 4        | GR 5        | GR 6        |
|-----------------|-------------|-------------|-------------|-------------|-------------|-------------|-------------|
| <b>4501G-UU</b> | <b>2140</b> | <b>2416</b> | <b>2506</b> | <b>2688</b> | <b>2963</b> | <b>3170</b> | <b>3447</b> |

Arm panel – upholstered, outside and inside

CAL 133, add \$312 List per chair

Dimensions (inches)

|         |       |         |       |       |       |
|---------|-------|---------|-------|-------|-------|
| seat H  | 18.0  | seat W  | 30.25 | arm H | 25.25 |
| total H | 32.75 | total W | 36.25 | depth | 29.75 |

Exceeds BIFMA Seating Durability Test to 750 lbs per chair



**4501G**  
113 lbs

## BEHAVIORAL HEALTH & HEAVY DUTY Specialty Seating

### DIGNITY

#### Standard Features

- Black finish only
- 6" soft wheel casters
- Standard Dolly holds 1 single seat chair
- Ships 1/carton, 17 cu. ft.
- Ships assembled



#### Dignity - Dolly

| Description       | Model          | Price      | Weight      |
|-------------------|----------------|------------|-------------|
| Single Seat Dolly | <b>DIGN-99</b> | <b>557</b> | <b>12lb</b> |

#### Dimensions (inches)

|        |      |
|--------|------|
| height | 39.0 |
| width  | 23.0 |
| depth  | 30.0 |



## BEHAVIORAL HEALTH & HEAVY DUTY Specialty Seating

### DIGNITY2

#### Standard Features

- Separate seat and back
- Arm caps available in wood, or polyurethane
- Laminate or upholstered side panels on inside and outside of arm in various combinations
- Upholstered side panels can match or contrast seat/back
- Select from 15 standard laminates or choose any standard Wilsonart, Nevamar, Formica, Arborite and Pionite matte finish laminates at no upcharge.
- Sculpted steel leg in any Spectone finish
- No protruding legs or hardware
- Tamper proof fastenings
- Non-removable steel levelling glides
- Ships assembled
- Ships 1/carton 15 cu ft

Contact Spec Customer Service to railroad fabrics (specify repeat info and yardage requirement will be provided) and for repeats greater than 5" x 5"

#### Options

- Polyurethane arm caps available in Black (B) or Taupe RAL 7006 (T) or Sterling Grey (G)
- For wood arm caps, select from 9 standard stains, or stain-to-match at no upcharge
- KYDEX® arm caps available in Black (B) or Taupe RAL 7006 (T) or Sterling Grey (G)
- Thermofoil side panels on inside and outside of arm, call Customer Service for pricing and finishes
- Add up to 20 lbs of additional weight per seat, add \$162 List per seat
- Non-standard laminates, contact Spec for pricing
- Antibacterial and antimicrobial fabrics available
- Floor mounting straps available, call Customer Service
- Connecting and freestanding tables
- CAL 133
- Elimination of separated seat and back available with either solid or perforated seat pan, call Customer Service

#### Single Seater with arms

COM 1.75 yds

0.75 yd COM per single seat / 1.0 yd COM per single back

| MODEL           | COM         | GR 1        | GR 2        | GR 3        | GR 4        | GR 5        | GR 6        |
|-----------------|-------------|-------------|-------------|-------------|-------------|-------------|-------------|
| <b>4601M-LL</b> | <b>1474</b> | <b>1567</b> | <b>1597</b> | <b>1658</b> | <b>1749</b> | <b>1819</b> | <b>1909</b> |

Side panel – laminated, outside and inside

CAL 133, add \$120 List per chair

COM 2.75 yds

0.75 yd COM per single seat / 1.0 yd COM per single back / .5 yd COM per panel

| MODEL           | COM         | GR 1        | GR 2        | GR 3        | GR 4        | GR 5        | GR 6        |
|-----------------|-------------|-------------|-------------|-------------|-------------|-------------|-------------|
| <b>4601M-LU</b> | <b>1591</b> | <b>1736</b> | <b>1783</b> | <b>1879</b> | <b>2023</b> | <b>2129</b> | <b>2274</b> |

Side panel – laminated, outside, upholstered inside

CAL 133, add \$204 List per chair

COM 2.75 yds

0.75 yd COM per single seat / 1.0 yd COM per single back / .5 yd COM per panel

| MODEL           | COM         | GR 1        | GR 2        | GR 3        | GR 4        | GR 5        | GR 6        |
|-----------------|-------------|-------------|-------------|-------------|-------------|-------------|-------------|
| <b>4601M-UL</b> | <b>1591</b> | <b>1736</b> | <b>1783</b> | <b>1879</b> | <b>2023</b> | <b>2129</b> | <b>2274</b> |

Side panel – upholstered outside, laminated inside

CAL 133, add \$204 List per chair

COM 3.75 yds

0.75 yd COM per single seat / 1.0 yd COM per single back / 1.0 yd COM per panel

| MODEL           | COM         | GR 1        | GR 2        | GR 3        | GR 4        | GR 5        | GR 6        |
|-----------------|-------------|-------------|-------------|-------------|-------------|-------------|-------------|
| <b>4601M-UU</b> | <b>1707</b> | <b>1904</b> | <b>1968</b> | <b>2100</b> | <b>2293</b> | <b>2442</b> | <b>2637</b> |

Side panel – upholstered, outside and inside

CAL 133, add \$284 List per chair

Dimensions (inches)

|         |       |         |      |       |      |
|---------|-------|---------|------|-------|------|
| seat H  | 18.0  | seat W  | 23.0 | arm H | 26.0 |
| total H | 31.75 | total W | 28.5 | depth | 30.0 |

For KYDEX® arms add suffix K and \$262  
Dynamic load tested to 500 lbs per chair



**4601M**  
95 lbs

## BEHAVIORAL HEALTH & HEAVY DUTY Specialty Seating

### DIGNITY2

#### Standard Features

- Separate seat and back
- Arm caps available in wood, or polyurethane
- Laminate or upholstered side panels on inside and outside of arm in various combinations
- Upholstered side panels can match or contrast seat/back
- Select from 15 standard laminates or choose any standard Wilsonart, Nevamar, Formica, Arborite and Pionite matte finish laminates at no upcharge.
- Sculpted steel leg in any Spectone finish
- No protruding legs or hardware
- Tamper proof fastenings
- Non-removable steel levelling glides
- Ships assembled
- Ships 1/carton 15 cu ft

Contact Spec Customer Service to railroad fabrics (specify repeat info and yardage requirement will be provided) and for repeats greater than 5" x 5"

#### Options

- Polyurethane arm caps available in Black (B) or Taupe RAL 7006 (T) or Sterling Grey (G)
- For wood arm caps, select from 9 standard stains, or stain-to-match at no upcharge
- KYDEX® arm caps available in Black (B) or Taupe RAL 7006 (T) or Sterling Grey (G)
- Thermofoil side panels on inside and outside of arm, call Customer Service for pricing and finishes
- Add up to 20 lbs of additional weight per seat, add \$162 List per seat
- Non-standard laminates, contact Spec for pricing
- Antibacterial and antimicrobial fabrics available
- Floor mounting straps available, call Customer Service
- Connecting and freestanding tables
- CAL 133
- Elimination of separated seat and back available with either solid or perforated seat pan, call Customer Service

#### Two Seater with outside arms

COM 3.5 yds

0.75 yd COM per single seat / 1.0 yd COM per single back

| MODEL           | COM         | GR 1        | GR 2        | GR 3        | GR 4        | GR 5        | GR 6        |
|-----------------|-------------|-------------|-------------|-------------|-------------|-------------|-------------|
| <b>4602M-LL</b> | <b>2166</b> | <b>2349</b> | <b>2409</b> | <b>2531</b> | <b>2714</b> | <b>2851</b> | <b>3035</b> |

Side panel – laminated, outside and inside

CAL 133, add \$240 List per two seater

COM 4.5 yds

0.75 yd COM per single seat / 1.0 yd COM per single back / .5 yd COM per panel

| MODEL           | COM         | GR 1        | GR 2        | GR 3        | GR 4        | GR 5        | GR 6        |
|-----------------|-------------|-------------|-------------|-------------|-------------|-------------|-------------|
| <b>4602M-UL</b> | <b>2282</b> | <b>2518</b> | <b>2597</b> | <b>2751</b> | <b>2988</b> | <b>3165</b> | <b>3399</b> |

Side panel – laminated, outside, upholstered inside

CAL 133, add \$324 List per two seater

COM 4.5 yds

0.75 yd COM per single seat / 1.0 yd COM per single back / .5 yd COM per panel

| MODEL           | COM         | GR 1        | GR 2        | GR 3        | GR 4        | GR 5        | GR 6        |
|-----------------|-------------|-------------|-------------|-------------|-------------|-------------|-------------|
| <b>4602M-UL</b> | <b>2282</b> | <b>2518</b> | <b>2597</b> | <b>2751</b> | <b>2988</b> | <b>3165</b> | <b>3399</b> |

Side panel – upholstered outside, laminated inside

CAL 133, add \$324 List per two seater

COM 5.5 yds

0.75 yd COM per single seat / 1.0 yd COM per single back / 1.0 yd COM per panel

| MODEL           | COM         | GR 1        | GR 2        | GR 3        | GR 4        | GR 5        | GR 6        |
|-----------------|-------------|-------------|-------------|-------------|-------------|-------------|-------------|
| <b>4602M-UU</b> | <b>2397</b> | <b>2686</b> | <b>2781</b> | <b>2972</b> | <b>3258</b> | <b>3475</b> | <b>3766</b> |

Side panel – upholstered, outside and inside

CAL 133, add \$408 List per two seater

Dimensions (inches)

|         |       |         |      |       |      |
|---------|-------|---------|------|-------|------|
| seat H  | 18.0  | seat W  | 45.5 | arm H | 26.0 |
| total H | 31.75 | total W | 51.0 | depth | 30.0 |

For KYDEX® arms add suffix K and \$262

Dynamic load tested to 750 lbs per two seater



**4602M**  
150 lbs

## BEHAVIORAL HEALTH & HEAVY DUTY Specialty Seating

### DIGNITY2

#### Standard Features

- Separate seat and back
- Arm caps available in wood, or polyurethane
- Laminate or upholstered side panels on inside and outside of arm in various combinations
- Upholstered side panels can match or contrast seat/back
- Select from 15 standard laminates or choose any standard Wilsonart, Nevamar, Formica, Arborite and Pionite matte finish laminates at no upcharge.
- Sculpted steel leg in any Spectone finish
- No protruding legs or hardware
- Tamper proof fastenings
- Non-removable steel levelling glides
- Ships assembled
- Ships 1/carton 15 cu ft

Contact Spec Customer Service to railroad fabrics (specify repeat info and yardage requirement will be provided) and for repeats greater than 5" x 5"

#### Options

- Polyurethane arm caps available in Black (B) or Taupe RAL 7006 (T) or Sterling Grey (G)
- For wood arm caps, select from 9 standard stains, or stain-to-match at no upcharge
- KYDEX® arm caps available in Black (B) or Taupe RAL 7006 (T) or Sterling Grey (G)
- Thermofoil side panels on inside and outside of arm, call Customer Service for pricing and finishes
- Add up to 20 lbs of additional weight per seat, add \$162 List per seat
- Non-standard laminates, contact Spec for pricing
- Antibacterial and antimicrobial fabrics available
- Floor mounting straps available, call Customer Service
- Connecting and freestanding tables
- CAL 133
- Elimination of separated seat and back available with either solid or perforated seat pan, call Customer Service

#### Three Seater with outside arms

COM 5.25 yds

0.75 yd COM per single seat / 1.0 yd COM per single back

| MODEL           | COM         | GR 1        | GR 2        | GR 3        | GR 4        | GR 5        | GR 6        |
|-----------------|-------------|-------------|-------------|-------------|-------------|-------------|-------------|
| <b>4603M-LL</b> | <b>2856</b> | <b>3132</b> | <b>3224</b> | <b>3406</b> | <b>3680</b> | <b>3886</b> | <b>4162</b> |

Side panel – laminated, outside and inside

CAL 133, add \$360 List per three seater

COM 6.25 yds

0.75 yd COM per single seat / 1.0 yd COM per single back / .5 yd COM per panel

| MODEL           | COM         | GR 1        | GR 2        | GR 3        | GR 4        | GR 5        | GR 6        |
|-----------------|-------------|-------------|-------------|-------------|-------------|-------------|-------------|
| <b>4603M-LU</b> | <b>2971</b> | <b>3300</b> | <b>3408</b> | <b>3628</b> | <b>3953</b> | <b>4197</b> | <b>4526</b> |

Side panel – laminated, outside, upholstered inside

CAL 133, add \$444 List per three seater

COM 6.25 yds

0.75 yd COM per single seat / 1.0 yd COM per single back / .5 yd COM per panel

| MODEL           | COM         | GR 1        | GR 2        | GR 3        | GR 4        | GR 5        | GR 6        |
|-----------------|-------------|-------------|-------------|-------------|-------------|-------------|-------------|
| <b>4603M-UL</b> | <b>2971</b> | <b>3300</b> | <b>3408</b> | <b>3628</b> | <b>3953</b> | <b>4197</b> | <b>4526</b> |

Side panel – upholstered outside, laminated inside

CAL 133, add \$444 List per three seater

COM 7.25 yds

0.75 yd COM per single seat / 1.0 yd COM per single back / 1.0 yd COM per panel

| MODEL           | COM         | GR 1        | GR 2        | GR 3        | GR 4        | GR 5        | GR 6        |
|-----------------|-------------|-------------|-------------|-------------|-------------|-------------|-------------|
| <b>4603M-UU</b> | <b>3088</b> | <b>3470</b> | <b>3595</b> | <b>3848</b> | <b>4223</b> | <b>4509</b> | <b>4892</b> |

Side panel – upholstered, outside and inside

CAL 133, add \$528 List per three seater

Dimensions (inches)

|         |       |         |      |       |      |
|---------|-------|---------|------|-------|------|
| seat H  | 18.0  | seat W  | 68.0 | arm H | 26.0 |
| total H | 31.75 | total W | 74.0 | depth | 30.0 |

For KYDEX® arms add suffix K and \$262

Dynamic load tested to 1000 lbs per three seater



**4603M**  
205 lbs

## BEHAVIORAL HEALTH & HEAVY DUTY Specialty Seating

### DIGNITY2

#### Standard Features

- Separate seat and back
- Arm caps available in wood, or polyurethane
- Laminate or upholstered side panels on inside and outside of arm in various combinations
- Upholstered side panels can match or contrast seat/back
- Select from 15 standard laminates or choose any standard Wilsonart, Nevamar, Formica, Arborite and Pionite matte finish laminates at no upcharge.
- Sculpted steel leg in any Spectone finish
- No protruding legs or hardware
- Tamper proof fastenings
- Non-removable steel levelling glides
- Ships assembled
- Ships 1/carton 15 cu ft

Contact Spec Customer Service to railroad fabrics (specify repeat info and yardage requirement will be provided) and for repeats greater than 5" x 5"

#### Options

- Polyurethane arm caps available in Black (B) or Taupe RAL 7006 (T) or Sterling Grey (G)
- For wood arm caps, select from 9 standard stains, or stain-to-match at no upcharge
- KYDEX® arm caps available in Black (B) or Taupe RAL 7006 (T) or Sterling Grey (G)
- Thermofoil side panels on inside and outside of arm, call Customer Service for pricing and finishes
- Add up to 20 lbs of additional weight per seat, add \$162 List per seat
- Non-standard laminates, contact Spec for pricing
- Antibacterial and antimicrobial fabrics available
- Floor mounting straps available, call Customer Service
- Connecting and freestanding tables
- CAL 133
- Elimination of separated seat and back available with either solid or perforated seat pan, call Customer Service

#### Bariatric Single Seater with arms

COM 3.25 yds

1.5 yd COM per single seat / 1.75 yd COM per single back

| MODEL           | COM         | GR 1        | GR 2        | GR 3        | GR 4        | GR 5        | GR 6        |
|-----------------|-------------|-------------|-------------|-------------|-------------|-------------|-------------|
| <b>4601G-LL</b> | <b>1907</b> | <b>2079</b> | <b>2134</b> | <b>2247</b> | <b>2417</b> | <b>2546</b> | <b>2716</b> |

Side panel – laminated, outside and inside

CAL 133, add \$154 List per chair

COM 4.25 yds

1.5 yd COM per single seat / 1.75 yd COM per single back / .5 yd COM per panel

| MODEL           | COM         | GR 1        | GR 2        | GR 3        | GR 4        | GR 5        | GR 6        |
|-----------------|-------------|-------------|-------------|-------------|-------------|-------------|-------------|
| <b>4601G-LU</b> | <b>2024</b> | <b>2247</b> | <b>2320</b> | <b>2467</b> | <b>2688</b> | <b>2855</b> | <b>3078</b> |

Side panel – laminated, outside, upholstered inside

CAL 133, add \$233 List per chair

COM 4.25 yds

1.5 yd COM per single seat / 1.75 yd COM per single back / .5 yd COM per panel

| MODEL           | COM         | GR 1        | GR 2        | GR 3        | GR 4        | GR 5        | GR 6        |
|-----------------|-------------|-------------|-------------|-------------|-------------|-------------|-------------|
| <b>4601G-UL</b> | <b>2024</b> | <b>2247</b> | <b>2320</b> | <b>2467</b> | <b>2688</b> | <b>2855</b> | <b>3078</b> |

Side panel – upholstered outside, laminated inside

CAL 133, add \$233 List per chair

COM 5.25 yds

1.5 yd COM per single seat / 1.75 yd COM per single back / 1.0 yd COM per panel

| MODEL           | COM         | GR 1        | GR 2        | GR 3        | GR 4        | GR 5        | GR 6        |
|-----------------|-------------|-------------|-------------|-------------|-------------|-------------|-------------|
| <b>4601G-UU</b> | <b>2140</b> | <b>2416</b> | <b>2506</b> | <b>2688</b> | <b>2963</b> | <b>3170</b> | <b>3447</b> |

Side panel – upholstered, outside and inside

CAL 133, add \$312 List per chair

Dimensions (inches)

|         |       |         |      |       |      |
|---------|-------|---------|------|-------|------|
| seat H  | 18.0  | seat W  | 31.0 | arm H | 26.0 |
| total H | 31.75 | total W | 36.5 | depth | 30.0 |

For KYDEX® arms add suffix K and \$262

Dynamic load tested to 750 lbs per chair



**4601G**  
113 lbs



# BEHAVIORAL HEALTH & HEAVY DUTY Specialty Seating

## DIGNITY2

### Standard Features

- Separate seat and back
- Arm caps available in wood, or polyurethane
- Laminate or upholstered side panels on inside and outside of arm in various combinations
- Upholstered side panels can match or contrast seat/back
- Select from 15 standard laminates or choose any standard Wilsonart, Nevamar, Formica, Arborite and Pionite matte finish laminates at no upcharge.
- Sculpted steel leg in any Spectone finish
- No protruding legs or hardware
- Tamper proof fastenings
- Non-removable steel levelling glides
- Ships assembled
- Ships 1/carton 15 cu ft

Contact Spec Customer Service to railroad fabrics (specify repeat info and yardage requirement will be provided) and for repeats greater than 5" x 5"

### Options

- Polyurethane arm caps available in Black (B) or Taupe RAL 7006 (T) or Sterling Grey (G)
- For wood arm caps, select from 9 standard stains, or stain-to-match at no upcharge
- KYDEX® arm caps available in Black (B) or Taupe RAL 7006 (T) or Sterling Grey (G)
- Thermofoil side panels on inside and outside of arm, call Customer Service for pricing and finishes
- Add up to 20 lbs of additional weight per seat, add \$162 List per seat
- Non-standard laminates, contact Spec for pricing
- Antibacterial and antimicrobial fabrics available
- Floor mounting straps available, call Customer Service
- Connecting and freestanding tables
- CAL 133
- Elimination of separated seat and back available with either solid or perforated seat pan, call Customer Service

### Single Seater with no arms

COM 1.75 yds

0.75 yd COM per single seat / 1.0 yd COM per single back

| MODEL             | COM         | GR 1        | GR 2        | GR 3        | GR 4        | GR 5        | GR 6        |
|-------------------|-------------|-------------|-------------|-------------|-------------|-------------|-------------|
| <b>4601M-LL-N</b> | <b>1453</b> | <b>1544</b> | <b>1575</b> | <b>1636</b> | <b>1727</b> | <b>1796</b> | <b>1889</b> |

Side panel – laminated, outside and inside

CAL 133, add \$120 List per chair

COM 2.75 yds

0.75 yd COM per single seat / 1.0 yd COM per single back / .5 yd COM per panel

| MODEL             | COM         | GR 1        | GR 2        | GR 3        | GR 4        | GR 5        | GR 6        |
|-------------------|-------------|-------------|-------------|-------------|-------------|-------------|-------------|
| <b>4601M-LU-N</b> | <b>1568</b> | <b>1713</b> | <b>1760</b> | <b>1856</b> | <b>2001</b> | <b>2107</b> | <b>2251</b> |

Side panel – laminated, outside, upholstered inside

CAL 133, add \$204 List per chair

COM 2.75 yds

0.75 yd COM per single seat / 1.0 yd COM per single back / .5 yd COM per panel

| MODEL             | COM         | GR 1        | GR 2        | GR 3        | GR 4        | GR 5        | GR 6        |
|-------------------|-------------|-------------|-------------|-------------|-------------|-------------|-------------|
| <b>4601M-UL-N</b> | <b>1568</b> | <b>1713</b> | <b>1760</b> | <b>1856</b> | <b>2001</b> | <b>2107</b> | <b>2251</b> |

Side panel – upholstered outside, laminated inside

CAL 133, add \$204 List per chair

COM 3.75 yds

0.75 yd COM per single seat / 1.0 yd COM per single back / 1.0 yd COM per panel

| MODEL             | COM         | GR 1        | GR 2        | GR 3        | GR 4        | GR 5        | GR 6        |
|-------------------|-------------|-------------|-------------|-------------|-------------|-------------|-------------|
| <b>4601M-UU-N</b> | <b>1684</b> | <b>1882</b> | <b>1947</b> | <b>2077</b> | <b>2272</b> | <b>2419</b> | <b>2616</b> |

Side panel – upholstered, outside and inside

CAL 133, add \$284 List per chair

Dimensions (inches)

|         |       |         |      |       |      |
|---------|-------|---------|------|-------|------|
| seat H  | 18.0  | seat W  | 23.0 | arm H | 17.5 |
| total H | 31.75 | total W | 28.5 | depth | 30.0 |

For KYDEX® arms add suffix K and \$262

Dynamic load tested to 500 lbs per chair



**4601M-N**  
95 lbs

## BEHAVIORAL HEALTH & HEAVY DUTY Specialty Seating

### DIGNITY2

#### Standard Features

- Separate seat and back
- Arm caps available in wood, or polyurethane
- Laminate or upholstered side panels on inside and outside of arm in various combinations
- Upholstered side panels can match or contrast seat/back
- Select from 15 standard laminates or choose any standard Wilsonart, Nevamar, Formica, Arborite and Pionite matte finish laminates at no upcharge.
- Sculpted steel leg in any Spectone finish
- No protruding legs or hardware
- Tamper proof fastenings
- Non-removable steel levelling glides
- Ships assembled
- Ships 1/carton 15 cu ft

Contact Spec Customer Service to railroad fabrics (specify repeat info and yardage requirement will be provided) and for repeats greater than 5" x 5"

#### Options

- Polyurethane arm caps available in Black (B) or Taupe RAL 7006 (T) or Sterling Grey (G)
- For wood arm caps, select from 9 standard stains, or stain-to-match at no upcharge
- KYDEX® arm caps available in Black (B) or Taupe RAL 7006 (T) or Sterling Grey (G)
- Thermofoil side panels on inside and outside of arm, call Customer Service for pricing and finishes
- Add up to 20 lbs of additional weight per seat, add \$162 List per seat
- Non-standard laminates, contact Spec for pricing
- Antibacterial and antimicrobial fabrics available
- Floor mounting straps available, call Customer Service
- Connecting and freestanding tables
- CAL 133
- Elimination of separated seat and back available with either solid or perforated seat pan, call Customer Service

#### Two Seater with no arms

COM 3.5 yds

0.75 yd COM per single seat / 1.0 yd COM per single back

| MODEL             | COM         | GR 1        | GR 2        | GR 3        | GR 4        | GR 5        | GR 6        |
|-------------------|-------------|-------------|-------------|-------------|-------------|-------------|-------------|
| <b>4602M-LL-N</b> | <b>2142</b> | <b>2328</b> | <b>2388</b> | <b>2510</b> | <b>2690</b> | <b>2829</b> | <b>3012</b> |

Side panel – laminated, outside and inside

CAL 133, add \$240 List per two seater

COM 4.5 yds

0.75 yd COM per single seat / 1.0 yd COM per single back / .5 yd COM per panel

| MODEL             | COM         | GR 1        | GR 2        | GR 3        | GR 4        | GR 5        | GR 6        |
|-------------------|-------------|-------------|-------------|-------------|-------------|-------------|-------------|
| <b>4602M-LU-N</b> | <b>2259</b> | <b>2496</b> | <b>2573</b> | <b>2729</b> | <b>2964</b> | <b>3142</b> | <b>3378</b> |

Side panel – laminated, outside, upholstered inside

CAL 133, add \$324 List per two seater

COM 4.5 yds

0.75 yd COM per single seat / 1.0 yd COM per single back / .5 yd COM per panel

| MODEL             | COM         | GR 1        | GR 2        | GR 3        | GR 4        | GR 5        | GR 6        |
|-------------------|-------------|-------------|-------------|-------------|-------------|-------------|-------------|
| <b>4602M-UL-N</b> | <b>2259</b> | <b>2496</b> | <b>2573</b> | <b>2729</b> | <b>2964</b> | <b>3142</b> | <b>3378</b> |

Side panel – upholstered outside, laminated inside

CAL 133, add \$324 List per two seater

COM 5.5 yds

0.75 yd COM per single seat / 1.0 yd COM per single back / 1.0 yd COM per panel

| MODEL             | COM         | GR 1        | GR 2        | GR 3        | GR 4        | GR 5        | GR 6        |
|-------------------|-------------|-------------|-------------|-------------|-------------|-------------|-------------|
| <b>4602M-UU-N</b> | <b>2375</b> | <b>2666</b> | <b>2759</b> | <b>2952</b> | <b>3236</b> | <b>3453</b> | <b>3744</b> |

Side panel – upholstered, outside and inside

CAL 133, add \$408 List per two seater

Dimensions (inches)

|         |       |         |      |       |      |
|---------|-------|---------|------|-------|------|
| seat H  | 18.0  | seat W  | 45.0 | arm H | 17.5 |
| total H | 31.75 | total W | 51.0 | depth | 30.0 |

For KYDEX® arms add suffix K and \$262

Dynamic load tested to 750 lbs per two seater



**4602M-N**  
150 lbs

# BEHAVIORAL HEALTH & HEAVY DUTY Specialty Seating

## DIGNITY2

### Standard Features

- Separate seat and back
- Arm caps available in wood, or polyurethane
- Laminate or upholstered side panels on inside and outside of arm in various combinations
- Upholstered side panels can match or contrast seat/back
- Select from 15 standard laminates or choose any standard Wilsonart, Nevamar, Formica, Arborite and Pionite matte finish laminates at no upcharge.
- Sculpted steel leg in any Spectone finish
- No protruding legs or hardware
- Tamper proof fastenings
- Non-removable steel levelling glides
- Ships assembled
- Ships 1/carton 15 cu ft

Contact Spec Customer Service to railroad fabrics (specify repeat info and yardage requirement will be provided) and for repeats greater than 5" x 5"

### Options

- Polyurethane arm caps available in Black (B) or Taupe RAL 7006 (T) or Sterling Grey (G)
- For wood arm caps, select from 9 standard stains, or stain-to-match at no upcharge
- KYDEX® arm caps available in Black (B) or Taupe RAL 7006 (T) or Sterling Grey (G)
- Thermofoil side panels on inside and outside of arm, call Customer Service for pricing and finishes
- Add up to 20 lbs of additional weight per seat, add \$162 List per seat
- Non-standard laminates, contact Spec for pricing
- Antibacterial and antimicrobial fabrics available
- Floor mounting straps available, call Customer Service
- Connecting and freestanding tables
- CAL 133
- Elimination of separated seat and back available with either solid or perforated seat pan, call Customer Service

### Three Seater with no arms

COM 5.25 yds

0.75 yd COM per single seat / 1.0 yd COM per single back

| MODEL             | COM         | GR 1        | GR 2        | GR 3        | GR 4        | GR 5        | GR 6        |
|-------------------|-------------|-------------|-------------|-------------|-------------|-------------|-------------|
| <b>4603M-LL-N</b> | <b>2834</b> | <b>3111</b> | <b>3202</b> | <b>3385</b> | <b>3658</b> | <b>3864</b> | <b>4139</b> |

Side panel – laminated, outside and inside

CAL 133, add \$360 List per three seater

COM 6.25 yds

0.75 yd COM per single seat / 1.0 yd COM per single back / .5 yd COM per panel

| MODEL             | COM         | GR 1        | GR 2        | GR 3        | GR 4        | GR 5        | GR 6        |
|-------------------|-------------|-------------|-------------|-------------|-------------|-------------|-------------|
| <b>4603M-LU-N</b> | <b>2950</b> | <b>3279</b> | <b>3387</b> | <b>3606</b> | <b>3931</b> | <b>4175</b> | <b>4503</b> |

Side panel – laminated, outside, upholstered inside

CAL 133, add \$444 List per three seater

COM 6.25 yds

0.75 yd COM per single seat / 1.0 yd COM per single back / .5 yd COM per panel

| MODEL             | COM         | GR 1        | GR 2        | GR 3        | GR 4        | GR 5        | GR 6        |
|-------------------|-------------|-------------|-------------|-------------|-------------|-------------|-------------|
| <b>4603M-UL-N</b> | <b>2950</b> | <b>3279</b> | <b>3387</b> | <b>3606</b> | <b>3931</b> | <b>4175</b> | <b>4503</b> |

Side panel – upholstered outside, laminated inside

CAL 133, add \$444 List per three seater

COM 7.25 yds

0.75 yd COM per single seat / 1.0 yd COM per single back / 1.0 yd COM per panel

| MODEL             | COM         | GR 1        | GR 2        | GR 3        | GR 4        | GR 5        | GR 6        |
|-------------------|-------------|-------------|-------------|-------------|-------------|-------------|-------------|
| <b>4603M-UU-N</b> | <b>3066</b> | <b>3449</b> | <b>3571</b> | <b>3826</b> | <b>4202</b> | <b>4488</b> | <b>4868</b> |

Side panel – upholstered, outside and inside

CAL 133, add \$528 List per three seater

Dimensions (inches)

|         |       |         |      |       |      |
|---------|-------|---------|------|-------|------|
| seat H  | 18.0  | seat W  | 68.0 | arm H | 17.5 |
| total H | 31.75 | total W | 74.0 | depth | 30.0 |

For KYDEX® arms add suffix K and \$262

Dynamic load tested to 1000 lbs per three seater



**4603M-N**  
205 lbs

## BEHAVIORAL HEALTH & HEAVY DUTY Specialty Seating

### DIGNITY2

#### Standard Features

- Separate seat and back
- Arm caps available in wood, or polyurethane
- Laminate or upholstered side panels on inside and outside of arm in various combinations
- Upholstered side panels can match or contrast seat/back
- Select from 15 standard laminates or choose any standard Wilsonart, Nevamar, Formica, Arborite and Pionite matte finish laminates at no upcharge.
- Sculpted steel leg in any Spectone finish
- No protruding legs or hardware
- Tamper proof fastenings
- Non-removable steel levelling glides
- Ships assembled
- Ships 1/carton 15 cu ft

Contact Spec Customer Service to railroad fabrics (specify repeat info and yardage requirement will be provided) and for repeats greater than 5" x 5"

#### Options

- Polyurethane arm caps available in Black (B) or Taupe RAL 7006 (T) or Sterling Grey (G)
- For wood arm caps, select from 9 standard stains, or stain-to-match at no upcharge
- KYDEX® arm caps available in Black (B) or Taupe RAL 7006 (T) or Sterling Grey (G)
- Thermofoil side panels on inside and outside of arm, call Customer Service for pricing and finishes
- Add up to 20 lbs of additional weight per seat, add \$162 List per seat
- Non-standard laminates, contact Spec for pricing
- Antibacterial and antimicrobial fabrics available
- Floor mounting straps available, call Customer Service
- Connecting and freestanding tables
- CAL 133
- Elimination of separated seat and back available with either solid or perforated seat pan, call Customer Service

#### Bariatric Single Seater with no arms

COM 3.25 yds

1.5 yd COM per single seat / 1.75 yd COM per single back

| MODEL             | COM         | GR 1        | GR 2        | GR 3        | GR 4        | GR 5        | GR 6        |
|-------------------|-------------|-------------|-------------|-------------|-------------|-------------|-------------|
| <b>4601G-LL-N</b> | <b>1887</b> | <b>2058</b> | <b>2112</b> | <b>2226</b> | <b>2395</b> | <b>2523</b> | <b>2693</b> |

Side panel – laminated, outside and inside

CAL 133, add \$154 List per chair

COM 4.25 yds

1.5 yd COM per single seat / 1.75 yd COM per single back / .5 yd COM per panel

| MODEL             | COM         | GR 1        | GR 2        | GR 3        | GR 4        | GR 5        | GR 6        |
|-------------------|-------------|-------------|-------------|-------------|-------------|-------------|-------------|
| <b>4601G-LU-N</b> | <b>2002</b> | <b>2226</b> | <b>2297</b> | <b>2445</b> | <b>2668</b> | <b>2833</b> | <b>3058</b> |

Side panel – laminated, outside, upholstered inside

CAL 133, add \$233 List per chair

COM 4.25 yds

1.5 yd COM per single seat / 1.75 yd COM per single back / .5 yd COM per panel

| MODEL             | COM         | GR 1        | GR 2        | GR 3        | GR 4        | GR 5        | GR 6        |
|-------------------|-------------|-------------|-------------|-------------|-------------|-------------|-------------|
| <b>4601G-UL-N</b> | <b>2002</b> | <b>2226</b> | <b>2297</b> | <b>2445</b> | <b>2668</b> | <b>2833</b> | <b>3058</b> |

Side panel – upholstered outside, laminated inside

CAL 133, add \$233 List per chair

COM 5.25 yds

1.5 yd COM per single seat / 1.75 yd COM per single back / 1.0 yd COM per panel

| MODEL             | COM         | GR 1        | GR 2        | GR 3        | GR 4        | GR 5        | GR 6        |
|-------------------|-------------|-------------|-------------|-------------|-------------|-------------|-------------|
| <b>4601G-UU-N</b> | <b>2118</b> | <b>2394</b> | <b>2485</b> | <b>2668</b> | <b>2941</b> | <b>3147</b> | <b>3424</b> |

Side panel – upholstered, outside and inside

CAL 133, add \$312 List per chair

Dimensions (inches)

|         |       |         |      |       |      |
|---------|-------|---------|------|-------|------|
| seat H  | 18.0  | seat W  | 31.0 | arm H | 17.5 |
| total H | 31.75 | total W | 36.5 | depth | 30.0 |

For KYDEX® arms add suffix K and \$262  
Dynamic load tested to 750 lbs per chair



**4601G-N**  
113 lbs

# BEHAVIORAL HEALTH & HEAVY DUTY Specialty Seating

## DIGNITY2

### Standard Features

- Separate seat and back
- Arm caps available in wood, or polyurethane
- Laminate or upholstered side panels on inside and outside of arm in various combinations
- Upholstered side panels can match or contrast seat/back
- Select from 15 standard laminates or choose any standard Wilsonart, Nevamar, Formica, Arborite and Pionite matte finish laminates at no upcharge.
- Sculpted steel leg in any Spectone finish
- No protruding legs or hardware
- Tamper proof fastenings
- Non-removable steel levelling glides
- Ships assembled
- Ships 1/carton 15 cu ft

Contact Spec Customer Service to railroad fabrics (specify repeat info and yardage requirement will be provided) and for repeats greater than 5" x 5"

### Options

- Polyurethane arm caps available in Black (B) or Taupe RAL 7006 (T) or Sterling Grey (G)
- For wood arm caps, select from 9 standard stains, or stain-to-match at no upcharge
- KYDEX® end and polyurethane middle arm caps available in Black (B), Taupe RAL 7006 (T), or Sterling Grey (G).
- Thermofoil side panels on inside and outside of arm, call Customer Service for pricing and finishes
- Add up to 20 lbs of additional weight per seat, add \$162 List per seat
- Non-standard laminates, contact Spec for pricing
- Antibacterial and antimicrobial fabrics available
- Floor mounting straps available, call Customer Service
- Connecting and freestanding tables
- CAL 133
- Elimination of separated seat and back available with either solid or perforated seat pan, call Customer Service

### Two Seater with half arms

COM 3.5 yds

0.75 yd COM per single seat / 1.0 yd COM per single back

| MODEL           | COM         | GR 1        | GR 2        | GR 3        | GR 4        | GR 5        | GR 6        |
|-----------------|-------------|-------------|-------------|-------------|-------------|-------------|-------------|
| <b>4612M-LL</b> | <b>2582</b> | <b>2768</b> | <b>2830</b> | <b>2950</b> | <b>3134</b> | <b>3271</b> | <b>3454</b> |

Side panel – laminated, outside and inside

CAL 133, add \$240 List per two seater

COM 5.0 yds

0.75 yd COM per single seat / 1.0 yd COM per single back / .5 yd COM per panel

| MODEL           | COM         | GR 1        | GR 2        | GR 3        | GR 4        | GR 5        | GR 6        |
|-----------------|-------------|-------------|-------------|-------------|-------------|-------------|-------------|
| <b>4612M-LU</b> | <b>2699</b> | <b>2961</b> | <b>3050</b> | <b>3223</b> | <b>3486</b> | <b>3680</b> | <b>3942</b> |

Side panel – laminated outside, upholstered inside, half arms will be upholstered

CAL 133, add \$576 List per two seater

COM 4.5 yds

0.75 yd COM per single seat / 1.0 yd COM per single back / .5 yd COM per panel

| MODEL           | COM         | GR 1        | GR 2        | GR 3        | GR 4        | GR 5        | GR 6        |
|-----------------|-------------|-------------|-------------|-------------|-------------|-------------|-------------|
| <b>4612M-UL</b> | <b>2699</b> | <b>2961</b> | <b>3050</b> | <b>3223</b> | <b>3486</b> | <b>3680</b> | <b>3942</b> |

Side panel – upholstered outside, laminated inside, half arms will be laminated

CAL 133, add \$576 List per two seater

COM 6.0 yds

0.75 yd COM per single seat / 1.0 yd COM per single back / 1.0 yd COM per panel

| MODEL           | COM         | GR 1        | GR 2        | GR 3        | GR 4        | GR 5        | GR 6        |
|-----------------|-------------|-------------|-------------|-------------|-------------|-------------|-------------|
| <b>4612M-UU</b> | <b>2816</b> | <b>3129</b> | <b>3236</b> | <b>3443</b> | <b>3758</b> | <b>3993</b> | <b>4307</b> |

Side panel – upholstered, outside and inside

CAL 133, add \$828 List per two seater

Dimensions (inches)

|         |       |         |      |       |      |
|---------|-------|---------|------|-------|------|
| seat H  | 18.0  | seat W  | 48.0 | arm H | 26.0 |
| total H | 31.75 | total W | 54.0 | depth | 30.0 |

For KYDEX® arms add suffix K and \$393

Dynamic load tested to 750 lbs per two seater



**4612M**  
150 lbs

## BEHAVIORAL HEALTH & HEAVY DUTY Specialty Seating

### DIGNITY2

#### Standard Features

- Separate seat and back
- Arm caps available in wood, or polyurethane
- Laminate or upholstered side panels on inside and outside of arm in various combinations
- Upholstered side panels can match or contrast seat/back
- Select from 15 standard laminates or choose any standard Wilsonart, Nevamar, Formica, Arborite and Pionite matte finish laminates at no upcharge.
- Sculpted steel leg in any Spectone finish
- No protruding legs or hardware
- Tamper proof fastenings
- Non-removable steel levelling glides
- Ships assembled
- Ships 1/carton 15 cu ft

Contact Spec Customer Service to railroad fabrics (specify repeat info and yardage requirement will be provided) and for repeats greater than 5" x 5"

#### Options

- Polyurethane arm caps available in Black (B) or Taupe RAL 7006 (T) or Sterling Grey (G)
- For wood arm caps, select from 9 standard stains, or stain-to-match at no upcharge
- KYDEX® end and polyurethane middle arm caps available in Black (B), Taupe RAL 7006 (T), or Sterling Grey (G).
- Thermofoil side panels on inside and outside of arm, call Customer Service for pricing and finishes
- Add up to 20 lbs of additional weight per seat, add \$162 List per seat
- Non-standard laminates, contact Spec for pricing
- Antibacterial and antimicrobial fabrics available
- Floor mounting straps available, call Customer Service
- Connecting and freestanding tables
- CAL 133
- Elimination of separated seat and back available with either solid or perforated seat pan, call Customer Service

#### Three Seater with half arms

COM 5.25 yds

0.75 yd COM per single seat / 1.0 yd COM per single back

| MODEL           | COM         | GR 1        | GR 2        | GR 3        | GR 4        | GR 5        | GR 6        |
|-----------------|-------------|-------------|-------------|-------------|-------------|-------------|-------------|
| <b>4613M-LL</b> | <b>3692</b> | <b>3968</b> | <b>4061</b> | <b>4243</b> | <b>4518</b> | <b>4722</b> | <b>4997</b> |

Side panel – laminated, outside and inside

CAL 133, add \$360 List per three seater

COM 7.25 yds

0.75 yd COM per single seat / 1.0 yd COM per single back / .5 yd COM per panel

| MODEL           | COM         | GR 1        | GR 2        | GR 3        | GR 4        | GR 5        | GR 6        |
|-----------------|-------------|-------------|-------------|-------------|-------------|-------------|-------------|
| <b>4613M-LU</b> | <b>3808</b> | <b>4188</b> | <b>4317</b> | <b>4569</b> | <b>4948</b> | <b>5230</b> | <b>5611</b> |

Side panel – laminated outside, upholstered inside, half arms will be upholstered

CAL 133, add \$780 List per three seater

COM 6.25 yds

0.75 yd COM per single seat / 1.0 yd COM per single back / .5 yd COM per panel

| MODEL           | COM         | GR 1        | GR 2        | GR 3        | GR 4        | GR 5        | GR 6        |
|-----------------|-------------|-------------|-------------|-------------|-------------|-------------|-------------|
| <b>4613M-UL</b> | <b>3808</b> | <b>4188</b> | <b>4317</b> | <b>4569</b> | <b>4948</b> | <b>5230</b> | <b>5611</b> |

Side panel – upholstered outside, laminated inside, half arms will be laminated

CAL 133, add \$780 List per three seater

COM 8.25 yds

0.75 yd COM per single seat / 1.0 yd COM per single back / 1.0 yd COM per panel

| MODEL           | COM         | GR 1        | GR 2        | GR 3        | GR 4        | GR 5        | GR 6        |
|-----------------|-------------|-------------|-------------|-------------|-------------|-------------|-------------|
| <b>4613M-UU</b> | <b>3924</b> | <b>4357</b> | <b>4503</b> | <b>4789</b> | <b>5221</b> | <b>5541</b> | <b>5974</b> |

Side panel – upholstered, outside and inside

CAL 133, add \$1032 List per three seater

Dimensions (inches)

|         |       |         |      |       |      |
|---------|-------|---------|------|-------|------|
| seat H  | 18.0  | seat W  | 75.0 | arm H | 26.0 |
| total H | 31.75 | total W | 80.5 | depth | 30.0 |

For KYDEX® arms add suffix K and \$524

Dynamic load tested to 1000 lbs per three seater



**4613M**  
205 lbs

# BEHAVIORAL HEALTH & HEAVY DUTY Specialty Seating

## DIGNITY2

### Standard Features

- Tamper proof fastenings

To order full panel side panels, add ZC-LL, or ZC-U to model number, e.g. 4601M-ZC-LL

To order wall-saving side panels, add WS-LL or WS-U to the model number, e.g. 4601M-WS-U

Pricing is for entire chair (2 end side panels).

Contact Spec Customer Service to railroad fabrics (specify repeat info and yardage requirement will be provided) and for repeats greater than 5" x 5"

### Options

- Thermofoil side panels on inside and outside of arm, call Customer Service for pricing and finishes
- Floor mounting straps available, call Customer Service

### Extended Side Panels

#### Laminate Panels Inside & Outside

| MODEL | LIST |
|-------|------|
| ZC-LL | 85   |

#### Laminate & Upholstered Combination Panels

COM 0.5 yd per panel

| MODEL | COM | GR 1 | GR 2 | GR 3 | GR 4 | GR 5 | GR 6 |
|-------|-----|------|------|------|------|------|------|
| ZC-LU | 85  | 96   | 99   | 105  | 114  | 122  | 132  |
| ZC-UL | 85  | 96   | 99   | 105  | 114  | 122  | 132  |

#### Fully Upholstered Panels

COM 1.5 yd per panel

| MODEL | COM | GR 1 | GR 2 | GR 3 | GR 4 | GR 5 | GR 6 |
|-------|-----|------|------|------|------|------|------|
| ZC-U  | 85  | 96   | 99   | 105  | 114  | 122  | 132  |



Side panel extended to floor

### Wall-Saving Side Panels

#### Laminate Panels Inside & Outside

| MODEL | LIST |
|-------|------|
| WS-LL | 138  |

#### Laminate & Upholstered Combination Panels

COM 1.0 yd per panel

| MODEL | COM | GR 1 | GR 2 | GR 3 | GR 4 | GR 5 | GR 6 |
|-------|-----|------|------|------|------|------|------|
| WS-LU | 138 | 269  | 305  | 367  | 476  | 555  | 634  |
| WS-UL | 138 | 269  | 305  | 367  | 476  | 555  | 634  |

#### Fully Upholstered Panels

COM 2.0 yd per panel

| MODEL | COM | GR 1 | GR 2 | GR 3 | GR 4 | GR 5 | GR 6 |
|-------|-----|------|------|------|------|------|------|
| WS-U  | 138 | 269  | 305  | 367  | 476  | 555  | 634  |



Wall-saving side panels



## BEHAVIORAL HEALTH & HEAVY DUTY Specialty Seating DIGNITY2

### Standard Features

- Black finish only
- 6" soft wheel casters
- Standard Dolly holds 1 single seat chair
- Ships 1/carton, 17 cu. ft.
- Ships assembled



### Dignity2 - Dolly

| Description       | Model          | Price      | Weight      |
|-------------------|----------------|------------|-------------|
| Single Seat Dolly | <b>DIGN-99</b> | <b>557</b> | <b>12lb</b> |

#### Dimensions (inches)

|        |      |
|--------|------|
| height | 39.0 |
| width  | 23.0 |
| depth  | 30.0 |

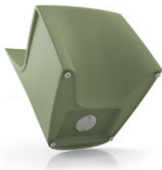


# BEHAVIORAL HEALTH & HEAVY DUTY Specialty Seating

## HARDI

### Standard Features

- Single roto-molded design
- CAL 133 compliant
- Select from 6 standard colors, which have been selected from our palette of standard Spectone finishes
- No protruding legs or hardware
- Standard without glides
- Dining ships 1/carton 14 cu ft, Lounge ships 1/carton 16 cu ft
- Removable threaded cap is fastened with tamperproof fasteners. Sand (not included) can be added on site for additional weight and ballast utilizing the plastic bag from packaging. Contact Customer Service for more information



### Options

- Four nickel-plated non-removable nylon glides secured with LOCTITE®, add \$20 List
- Ganging is available. Please specify a set of nickel-plated non-removable nylon glides secured with LOCTITE for each chair that you want to gang together (\$20 List per chair), and add Q-1 ganging kits (\$36 List). In other words, to gang 9 chairs together, please order 9 sets of glides and 8 ganging kits.
- Floor mounting is available. Please specify a set of nickel-plated non-removable nylon glides secured with LOCTITE for each chair that you want to mount to the floor (\$20 List per chair), and add the same amount of floor mounting kits (\$36 List). In other words, to floor mount 9 chairs, please order 9 sets of glides and 9 floor mounting kits.

### Dining

| MODEL       | Price      |
|-------------|------------|
| <b>8701</b> | <b>584</b> |
| <b>8708</b> | <b>659</b> |

#### Dimensions (inches)

|        |      |                   |      |                |      |         |      |
|--------|------|-------------------|------|----------------|------|---------|------|
| seat H | 18.0 | seat W            | 20.0 | arm H          | 26.0 | total H | 33.0 |
| depth  | 24.0 | total W (no arms) | 22.0 | total W (arms) | 24.0 |         |      |

Exceeds BIFMA Seating Durability Test to 500 lbs



**8701**  
Without arms  
23 lbs



**8708**  
With arms  
28 lbs

### Lounge

| MODEL       | Price      |
|-------------|------------|
| <b>8801</b> | <b>631</b> |
| <b>8808</b> | <b>738</b> |

#### Dimensions (inches)

|        |       |                   |      |                |      |         |       |
|--------|-------|-------------------|------|----------------|------|---------|-------|
| seat H | 17.25 | seat W            | 23.0 | arm H          | 25.0 | total H | 29.50 |
| depth  | 27.0  | total W (no arms) | 26.0 | total W (arms) | 27.0 |         |       |

Exceeds BIFMA Seating Durability Test to 500 lbs



**8801**  
Without arms  
25 lbs



**8808**  
With arms  
31 lbs

## BEHAVIORAL HEALTH & HEAVY DUTY Specialty Seating

### HARDI

#### Standard Features

- Single roto-molded design
- CAL 133 compliant
- Select from 6 standard colors, which have been selected from our palette of standard Spectone finishes
- No protruding legs or hardware
- Rocker ships 1/carton 26 cu ft
- Removable threaded cap is fastened with tamperproof fasteners. Sand (not included) can be added on site for additional weight and ballast utilizing the plastic bag from packaging. Contact Customer Service for more information



#### Rocker

|             |             |
|-------------|-------------|
| MODEL       | Price       |
| <b>8840</b> | <b>1258</b> |

#### Dimensions (inches)

|        |       |         |      |       |      |         |      |
|--------|-------|---------|------|-------|------|---------|------|
| seat H | 18.25 | seat W  | 20.0 | arm H | 25.0 | total H | 37.5 |
| depth  | 33.75 | total W | 28.0 |       |      |         |      |

Exceeds BIFMA Seating Durability Test to 500 lbs



**8840**  
36 lbs

## BEHAVIORAL HEALTH & HEAVY DUTY Specialty Seating

### HARDI

#### Standard Features

- Single roto-molded design
- CAL 133 compliant
- Select from 6 standard colors, which have been selected from our palette of standard Spectone finishes
- No protruding legs or hardware
- Standard without glides
- Stool ships 1/carton 4 cu ft
- Removable threaded cap is fastened with tamperproof fasteners. Sand (not included) can be added on site for additional weight and ballast utilizing the plastic bag from packaging. Contact Customer Service for more information

#### Options

- Nickel-plated non-removable nylon glides secured with LOCTITE®, add \$20 List
- Floor mounting is available. Please specify a set of nickel-plated non-removable nylon glides secured with LOCTITE for each stool that you want to mount to the floor (\$20 List per stool), and add the same amount of floor mounting kits (\$36 List). In other words, to floor mount 9 stools, please order 9 sets of glides and 9 floor mounting kits.



#### Stool

| MODEL       | Price      |
|-------------|------------|
| <b>8901</b> | <b>417</b> |

#### Dimensions (inches)

|         |      |         |      |
|---------|------|---------|------|
| seat H  | 18.0 | seat W  | 16.0 |
| total H | 18.0 | total W | 17.5 |

Exceeds BIFMA Seating Durability Test to 500 lbs



**8901**  
10 lbs

## BEHAVIORAL HEALTH & HEAVY DUTY Specialty Seating

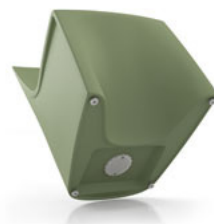
### HARDI

#### Standard Features

- Single roto-molded design
- Select from 6 standard colors, which have been selected from our palette of standard Spectone finishes
- No protruding legs or hardware
- Standard without glides
- Ships 1/carton 6 cu ft
- Removable threaded cap is fastened with tamperproof fasteners. Sand (not included) can be added on site for additional weight and ballast utilizing the plastic bag from packaging. Contact Customer Service for more information

#### Options

- Nickel-plated non-removable nylon glides secured with LOCTITE®, add \$20 List
- Floor mounting is available. Please specify a set of nickel-plated non-removable nylon glides secured with LOCTITE for each chair that you want to mount to the floor (\$20 List per chair), and add the same amount of floor mounting kits (\$36 List). In other words, to floor mount 9 chairs, please order 9 sets of glides and 9 floor mounting kits.



#### Children's Dining

MODEL      Price  
**8702**      **550**

#### Dimensions (inches)

|        |      |                   |      |         |      |
|--------|------|-------------------|------|---------|------|
| seat H | 15.0 | seat W            | 18.0 | total H | 27.0 |
| depth  | 20.5 | total W (no arms) | 18.0 |         |      |

Exceeds BIFMA Seating Durability Test to 500 lbs



**8702**  
**Without arms**  
15.5 lbs

## BEHAVIORAL HEALTH & HEAVY DUTY Specialty Seating

### MIDWAY HD

#### Standard Features

- Separate seat and back
- Polyurethane arms or wood arms
- Fully welded 1.25" frame with glides
- Added weight, Sled base
- Frame in any Spectone color
- Steel glides secured with LOCTITE®
- Tamperproof hardware
- Zippered covers glued shut, pulls removed
- Ships assembled
- Ships 1/carton 17 cu ft

#### Options

- Polyurethane arms available in Black, Sterling Grey or Taupe (RAL 7006)
- Wood arms in Natural Maple are available in any of 9 standard stains or stain-to-match at no up charge
- Floor mounting glides, add \$48 List/chair
- Antibacterial and antimicrobial fabrics available
- Different fabric on seat and back at no upcharge
- CAL 133

Contact Spec™ Customer Service to railroad fabrics (specify repeat info and yardage requirement will be provided) and for repeats greater than 5" x 5"



#### Midway HD Single Seater with arms – Sled Base

COM 1.5 yds

0.5 yd COM per single seat

1.0 yd COM per single back

| MODEL          | COM         | GR 1        | GR 2        | GR 3        | GR 4        | GR 5        | GR 6        |
|----------------|-------------|-------------|-------------|-------------|-------------|-------------|-------------|
| <b>3201UHD</b> | <b>1376</b> | <b>1487</b> | <b>1526</b> | <b>1598</b> | <b>1709</b> | <b>1794</b> | <b>1907</b> |

Dimensions (inches)

|         |      |         |       |       |      |
|---------|------|---------|-------|-------|------|
| seat H  | 18.0 | seat W  | 20.5  | arm H | 26.0 |
| total H | 36.0 | total W | 23.75 | depth | 26.0 |

Exceeds BIFMA Seating Durability Test to 500 lbs per seat  
CAL 133, add \$120 List per seat



**3201UHD**  
48 lbs

#### Midway HD Highback with arms – Sled Base

COM 1.6 yds

0.5 yd COM per single seat

1.1 yds COM per single back

| MODEL          | COM         | GR 1        | GR 2        | GR 3        | GR 4        | GR 5        | GR 6        |
|----------------|-------------|-------------|-------------|-------------|-------------|-------------|-------------|
| <b>3201HHD</b> | <b>1494</b> | <b>1609</b> | <b>1649</b> | <b>1723</b> | <b>1838</b> | <b>1926</b> | <b>2042</b> |

Dimensions (inches)

|         |      |         |       |       |      |
|---------|------|---------|-------|-------|------|
| seat H  | 18.0 | seat W  | 20.5  | arm H | 26.0 |
| total H | 46.0 | total W | 23.75 | depth | 26.0 |

Exceeds BIFMA Seating Durability Test to 500 lbs per seat  
CAL 133, add \$150 List per chair



**3201HHD**  
50 lbs

## BEHAVIORAL HEALTH & HEAVY DUTY Specialty Seating

### MIDWAY HD

#### Standard Features

- Separate seat and back
- Polyurethane arms or wood arms
- Fully welded 1.25" frame with glides
- Added weight, Sled base
- Frame in any Spectone color
- Steel glides secured with LOCTITE®
- Tamperproof hardware
- Zippered covers glued shut, pulls removed
- Ships assembled
- Ships 1/carton 17 cu ft

#### Options

- Polyurethane arms available in Black, Sterling Grey or Taupe (RAL 7006)
- Wood arms in Natural Maple are available in any of 9 standard stains or stain-to-match at no up charge
- Floor mounting glides, add \$48 List/chair
- Antibacterial and antimicrobial fabrics available
- Different fabric on seat and back at no upcharge
- CAL 133

*Contact Spec Customer Service to railroad fabrics (specify repeat info and yardage requirement will be provided) and for repeats greater than 5" x 5"*



#### Midway HD Bariatric with arms – Sled Base

COM 2.55 yds  
0.8 yd COM per single seat  
1.75 yd COM per single back

| MODEL          | COM         | GR 1        | GR 2        | GR 3        | GR 4        | GR 5        | GR 6        |
|----------------|-------------|-------------|-------------|-------------|-------------|-------------|-------------|
| <b>3201GHD</b> | <b>1792</b> | <b>1954</b> | <b>2010</b> | <b>2116</b> | <b>2279</b> | <b>2402</b> | <b>2568</b> |

#### Dimensions (inches)

|         |      |         |       |       |      |
|---------|------|---------|-------|-------|------|
| seat H  | 18.0 | seat W  | 30.0  | arm H | 26.0 |
| total H | 36.0 | total W | 32.75 | depth | 26.0 |

Exceeds BIFMA Seating Durability Test to 750 lbs per seat  
CAL 133, add \$205 List per seat



**3201GHD**  
56 lbs



## BEHAVIORAL HEALTH & HEAVY DUTY Specialty Seating

### SNOWBALL 2 HD

#### Standard Features

- 0.875" frame
- Added weight, Sled base
- Frame in any Spectone color
- Steel glides secured with LOCTITE®
- Tamperproof hardware
- Does not stack
- Ships 1/carton 11 cu ft
- Staples on the bottom of the seat are covered by a 100% recycled plastic seat pan

#### Options

- Floor mounting glides, add \$48 List/chair
- CAL 133

Contact Spec Customer Service to railroad fabrics (specify repeat info and yardage requirement will be provided) and for repeats greater than 5" x 5"



#### Snowball 2 HD Armless – Sled Base

COM 1.0 yd

0.5 yd COM per single seat

0.5 yd COM per single back

| MODEL         | COM        | GR 1       | GR 2       | GR 3       | GR 4       | GR 5       | GR 6       |
|---------------|------------|------------|------------|------------|------------|------------|------------|
| <b>1891HD</b> | <b>659</b> | <b>714</b> | <b>734</b> | <b>772</b> | <b>826</b> | <b>868</b> | <b>925</b> |

Dimensions (inches)

|         |      |         |       |       |      |
|---------|------|---------|-------|-------|------|
| seat H  | 18.0 | seat W  | 18.5  | depth | 21.5 |
| total H | 33.0 | total W | 20.25 |       |      |

Exceeds BIFMA Seating Durability Test to 500 lbs per chair

CAL 133, add \$62 List per chair

1" extra seat foam, specify and add \$15 List



**1891HD**  
44 lbs

#### Snowball 2 HD with Steel Arms – Sled Base

COM 1.0 yd

0.5 yd COM per single seat

0.5 yd COM per single back

| MODEL         | COM        | GR 1       | GR 2       | GR 3       | GR 4       | GR 5       | GR 6       |
|---------------|------------|------------|------------|------------|------------|------------|------------|
| <b>1881HD</b> | <b>705</b> | <b>759</b> | <b>779</b> | <b>816</b> | <b>870</b> | <b>914</b> | <b>969</b> |

Dimensions (inches)

|         |      |         |      |       |      |
|---------|------|---------|------|-------|------|
| seat H  | 18.0 | seat W  | 18.5 | depth | 21.5 |
| total H | 33.0 | total W | 23.5 |       |      |

Exceeds BIFMA Seating Durability Test to 500 lbs per chair

CAL 133, add \$62 List per chair

1" extra seat foam, specify and add \$15 List



**1881HD**  
45 lbs

## BEHAVIORAL HEALTH & HEAVY DUTY Specialty Seating

### TAILOR HD

#### Standard Features

- Separate seat and back
- A single-piece metal pan is welded to the frame, covering the underside of both seat and back, and therefore eliminating pass-through. Perforations in the metal pan allow for drainage
- Wall-saving frame
- Roto-molded foot in RAL 7037
- Exposed frame detail is standard in RAL 7037
- Tamper proof fastenings
- Ships assembled
- Ships 1 single seat per carton, 24 cu ft
- Ships 1 bariatric seat per carton, 32 cu ft

#### Options

- Polyurethane arm caps available in Black (B), Taupe RAL 7006 (T) or Sterling Grey (G), add \$118 List per arm
- Nickel-plated non-removable nylon glides secured with LOCTITE®, add \$20 List
- Floor mounting straps available, call Customer Service
- Up to 40 lbs of additional weight per seat is available, call Customer Service
- Upholstered arms/seat/back can match or contrast
- Antibacterial and antimicrobial fabrics available
- CAL 133

Contact Spec Customer Service to railroad fabrics (specify repeat info and yardage requirement will be provided) and for repeats greater than 5" x 5"



#### Tailor HD Single Seat With Arms

COM 4.75 yds  
1.25 yds COM per single seat  
1.5 yds COM per single back  
1.0 yds COM per arm

| MODEL          | COM         | GR 1        | GR 2        | GR 3        | GR 4        | GR 5        | GR 6        |
|----------------|-------------|-------------|-------------|-------------|-------------|-------------|-------------|
| <b>9101MHD</b> | <b>1828</b> | <b>2100</b> | <b>2189</b> | <b>2376</b> | <b>2653</b> | <b>2864</b> | <b>3145</b> |

Dimensions (inches)

|         |      |         |      |         |      |
|---------|------|---------|------|---------|------|
| seat H  | 18.0 | seat W  | 23.0 | arm H   | 24.5 |
| total H | 33.0 | total W | 29.0 | total D | 30.0 |

CAL 133, add \$361 List per unit  
Exceeds BIFMA Seating Durability Test to 750 lbs per single seater



**9101MHD**  
119 lbs

#### Tailor HD Bariatric With Arms

COM 5.5 yds  
1.5 yds COM per single seat  
2.0 yds COM per single back  
1.0 yds COM per arm

| MODEL          | COM         | GR 1        | GR 2        | GR 3        | GR 4        | GR 5        | GR 6        |
|----------------|-------------|-------------|-------------|-------------|-------------|-------------|-------------|
| <b>9101GHD</b> | <b>2032</b> | <b>2349</b> | <b>2453</b> | <b>2673</b> | <b>2996</b> | <b>3243</b> | <b>3571</b> |

Dimensions (inches)

|         |      |         |      |         |      |
|---------|------|---------|------|---------|------|
| seat H  | 18.0 | seat W  | 30.0 | arm H   | 24.5 |
| total H | 33.0 | total W | 36.0 | total D | 30.0 |

CAL 133, add \$419 List per unit  
Exceeds BIFMA Seating Durability Test to 750 lbs per bariatric chair



**9101GHD**  
133 lbs

## BEHAVIORAL HEALTH & HEAVY DUTY Specialty Seating

### TAILOR HD

#### Standard Features

- Separate seat and back
- A single-piece metal pan is welded to the frame, covering the underside of both seat and back, and therefore eliminating pass-through. Perforations in the metal pan allow for drainage
- Wall-saving frame
- Roto-molded foot in RAL 7037
- Exposed frame detail is standard in RAL 7037
- Tamper proof fastenings
- Ships assembled
- Ships 1 two seat per carton, 43 cu ft
- Ships 1 three seat per carton, 62 cu ft

#### Options

- Polyurethane arm caps available in Black (B), Taupe RAL 7006 (T) or Sterling Grey (G), add \$118 List per arm
- Nickel-plated non-removable nylon glides secured with LOCTITE®, add \$20 List
- Floor mounting straps available, call Customer Service
- Up to 40 lbs of additional weight per seat is available, call Customer Service
- Upholstered arms/seat/back can match or contrast
- Antibacterial and antimicrobial fabrics available
- CAL 133

Contact Spec Customer Service to railroad fabrics (specify repeat info and yardage requirement will be provided) and for repeats greater than 5" x 5"



#### Tailor HD Two Seat With Arms

COM 7.5 yds  
 2.5 yds COM per two seater one-piece seat  
 3.0 yds COM per two seater two-piece back (1.5 yds COM per single back)  
 1.0 yds COM per arm

| MODEL          | COM         | GR 1        | GR 2        | GR 3        | GR 4        | GR 5        | GR 6        |
|----------------|-------------|-------------|-------------|-------------|-------------|-------------|-------------|
| <b>9102MHD</b> | <b>2686</b> | <b>3109</b> | <b>3247</b> | <b>3538</b> | <b>3968</b> | <b>4295</b> | <b>4732</b> |

#### Dimensions (inches)

|         |      |         |      |         |      |
|---------|------|---------|------|---------|------|
| seat H  | 18.0 | seat W  | 23.0 | arm H   | 24.5 |
| total H | 33.0 | total W | 52.0 | total D | 30.0 |

CAL 133, add \$570 List per unit  
 Exceeds BIFMA Seating Durability Test to 450 lbs per two seater



**9102MHD**  
175 lbs

#### Tailor HD Three Seat With Arms

COM 10.25 yds  
 3.75 yds COM per three seater one-piece seat  
 4.5 yds COM per three seater three-piece back (1.5 yds COM per single back)  
 1.0 yds COM per arm

| MODEL          | COM         | GR 1        | GR 2        | GR 3        | GR 4        | GR 5        | GR 6        |
|----------------|-------------|-------------|-------------|-------------|-------------|-------------|-------------|
| <b>9103MHD</b> | <b>3586</b> | <b>4159</b> | <b>4347</b> | <b>4742</b> | <b>5326</b> | <b>5771</b> | <b>6364</b> |

#### Dimensions (inches)

|         |      |         |      |         |      |
|---------|------|---------|------|---------|------|
| seat H  | 18.0 | seat W  | 23.0 | arm H   | 24.5 |
| total H | 33.0 | total W | 75.0 | total D | 30.0 |

CAL 133, add \$779 List per unit  
 Exceeds BIFMA Seating Durability Test to 675 lbs per three seater



**9103MHD**  
231 lbs

## BEHAVIORAL HEALTH & HEAVY DUTY Specialty Seating

### TRAFFIC DINING

#### Standard Features

- Tabletop standard in Laminate with PVC Flat (PVF), 2MM or Self Edge (SE)
- Select from 15 standard laminates or choose any standard Wilsonart, Nevamar, Formica, Arborite and Pionite matte finish laminates at no upcharge. For other laminate please contact the factory for pricing.
- PVC Flat edge and 2mm Bio edge available in 38 solid colors. 2mm PVC edge available in wood grain to match 9 standard stains.
- Floor Mounting plates
- Tamperproof fasteners
- Welded steel end caps

#### Options

- 30" Bariatric seats are available. Contact factory for pricing
- Coated steel tabletop available. Contact factory for pricing
- CAL 133

Contact Spec Customer Service to railroad fabrics (specify repeat info and yardage requirement will be provided) and for repeats greater than 5" x 5"



#### Traffic Dining without arms, without upholstered cushions

N/A COM per single seat

| MODEL          | PRICE       |
|----------------|-------------|
| <b>7100NHD</b> | <b>4920</b> |

#### Dimensions (inches)

|         |       |         |      |            |       |             |      |
|---------|-------|---------|------|------------|-------|-------------|------|
| seat H  | 18.0  | seat W  | 22.0 | table top  | 30x48 | table H     | 29.0 |
| total H | 33.75 | total W | 48.0 | seat depth | 17.0  | total depth | 74   |

Exceeds BIFMA Seating Durability Test to 500 lbs per chair

#### Traffic Dining without arms, with upholstered cushions

0.75 yd COM per single seat and back

| MODEL          | COM         | GR 1        | GR 2        | GR 3        | GR 4        | GR 5        | GR 6        |
|----------------|-------------|-------------|-------------|-------------|-------------|-------------|-------------|
| <b>7100UHD</b> | <b>4999</b> | <b>5167</b> | <b>5223</b> | <b>5365</b> | <b>5535</b> | <b>5665</b> | <b>5832</b> |

#### Dimensions (inches)

|         |       |         |      |            |       |             |      |
|---------|-------|---------|------|------------|-------|-------------|------|
| seat H  | 18.0  | seat W  | 22.0 | table top  | 30x48 | table H     | 29.0 |
| total H | 33.75 | total W | 48.0 | seat depth | 17.0  | total depth | 74   |

Exceeds BIFMA Seating Durability Test to 500 lbs per chair  
CAL 133, add \$240 List per unit



## BEHAVIORAL HEALTH & HEAVY DUTY Specialty Seating

### 1000 SERIES HD

#### Standard Features

- One piece seat and back
- Fully welded 1.25" frame
- Added weight, Sled base
- Frame in any Spectone color
- Steel glides secured with LOCTITE®
- Tamperproof hardware
- Zippered covers glued shut, pulls removed
- Ships assembled
- Ships 1/carton 15 cu ft

#### Options

- Floor mounting glides, add \$48 List/chair
- CAL 133

Contact Spec Customer Service to railroad fabrics (specify repeat info and yardage requirement will be provided) and for repeats greater than 5" x 5"



#### 1000 Series HD Armless Medium Back – Sled Base

1.25 yds COM per single seat and back

| MODEL         | COM         | GR 1        | GR 2        | GR 3        | GR 4        | GR 5        | GR 6        |
|---------------|-------------|-------------|-------------|-------------|-------------|-------------|-------------|
| <b>1014HD</b> | <b>1103</b> | <b>1180</b> | <b>1199</b> | <b>1246</b> | <b>1316</b> | <b>1370</b> | <b>1440</b> |

#### Dimensions (inches)

|         |      |         |      |       |      |
|---------|------|---------|------|-------|------|
| seat H  | 18.0 | seat W  | 18.5 | depth | 22.0 |
| total H | 33.0 | total W | 18.5 |       |      |

Exceeds BIFMA Seating Durability Test to 500 lbs per chair  
CAL 133, add \$80 List per chair



**1014HD**  
46 lbs

## BEHAVIORAL HEALTH & HEAVY DUTY Specialty Seating

### 2000 SERIES HD

#### Standard Features

- Fully welded 1.5" frame
- Added weight, Sled base
- Frame in any Spectone color
- Steel glides secured with LOCTITE®
- Tamperproof hardware
- Zippered covers glued shut, pulls removed
- Ships assembled
- Ships 1/carton 17 cu ft

#### Options

- Floor mounting glides, add \$48 List/chair
- CAL 133

Contact Spec Customer Service to railroad fabrics (specify repeat info and yardage requirement will be provided) and for repeats greater than 5" x 5"



#### 2000 Series HD One Piece Single Seater with arms – Sled Base

COM 1.75 yds

1.75 yd COM per single seat and back

| MODEL          | COM         | GR 1        | GR 2        | GR 3        | GR 4        | GR 5        | GR 6        |
|----------------|-------------|-------------|-------------|-------------|-------------|-------------|-------------|
| <b>2201CHD</b> | <b>1163</b> | <b>1251</b> | <b>1282</b> | <b>1344</b> | <b>1432</b> | <b>1501</b> | <b>1593</b> |

Dimensions (inches)

|         |      |         |      |       |      |
|---------|------|---------|------|-------|------|
| seat H  | 18.0 | seat W  | 22.0 | arm H | 26.0 |
| total H | 35.0 | total W | 25.0 | depth | 26.5 |

Exceeds BIFMA Seating Durability Test to 500 lbs per seat  
CAL 133, add \$108 List per seat



**2201CHD**  
67 lbs

#### 2000 Series HD Separate Seat and Back with arms – Sled Base

COM 1.75 yds

1.0 yd COM per single seat

0.75 yd COM per single back

| MODEL           | COM         | GR 1        | GR 2        | GR 3        | GR 4        | GR 5        | GR 6        |
|-----------------|-------------|-------------|-------------|-------------|-------------|-------------|-------------|
| <b>2201CHDS</b> | <b>1366</b> | <b>1455</b> | <b>1485</b> | <b>1544</b> | <b>1635</b> | <b>1705</b> | <b>1795</b> |

Dimensions (inches)

|         |      |         |      |       |      |
|---------|------|---------|------|-------|------|
| seat H  | 18.0 | seat W  | 22.0 | arm H | 26.0 |
| total H | 35.0 | total W | 25.0 | depth | 26.5 |

Exceeds BIFMA Seating Durability Test to 500 lbs per seat  
CAL 133, add \$108 List per chair



**2201CHDS**  
67 lbs

## BEHAVIORAL HEALTH & HEAVY DUTY Specialty Tables



### PRODUCT CODE

2424SQ-TR HD

Product Code

Specification

HD: Heavy Duty\*

\*The code for our heavy duty tables featured in the pages below is the same as a regular model of the table you are specifying. By adding the letters "HD" at the end of the product code, it lets us know the product is intended for a behavioral health environment and the features below will automatically be specified.

### FEATURES

#### Tamper-Proof



#### Weighted

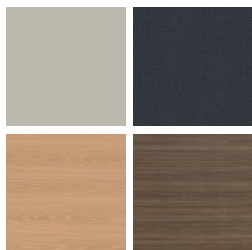


#### LOCTITE®-secured Glides



### FINISHES

#### LAMINATE



Select from 15 standard laminates or choose any standard Wilsonart, Nevamar, Formica, Arborite and Pionite matte finish laminates at no upcharge

#### VENEER



Select from one of our 9 standard wood stains or stain-to-match at no upcharge

#### BASE



Select from one of our 76 standard Spectone colors

#### EDGE



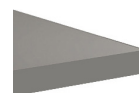
2MM



PVC



Hard Wood



SE

Check out our website for a complete list of edge profiles.



# BEHAVIORAL HEALTH & HEAVY DUTY Specialty Tables

## DIGNITY

### Standard Features

- Tops in laminate or veneer
- Select from 15 standard laminates or choose any standard Wilsonart, Nevamar, Formica, Arborite and Pionite matte finish laminates at no upcharge.
- Laminate tops with PVC Flat (PVF), Self Edge (SE), or hardwood (HB) edge
- 9 standard veneer and hardwood edge stains. Stain-to-match available at no upcharge.
- Tops utilize NU Green earth friendly core
- 18" height
- Non-removable steel levelling glides

### Options

- Specify frame finish, Black (B), Sterling Grey (G) or Taupe RAL 7006 (T)
- Additional weight can be added, contact factory
- Non-standard laminates, contact Spec for pricing
- Floor mounting straps available, call Customer Service

*Radius Corner Tables are recommended for open areas*



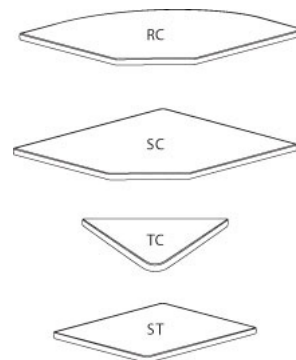
### Freestanding Lounge Tables

| Model             | Laminate<br>PVF/SE Edge | Laminate<br>HB Edge | Veneer<br>HB Edge | Weight | Cu.Ft. |
|-------------------|-------------------------|---------------------|-------------------|--------|--------|
| DIGN - 24 x 24 SQ | 1221                    | 1418                | 1455              | 57     | 7.2    |
| DIGN - 30 x 30 SQ | 1376                    | 1518                | 1569              | 74     | 13.5   |
| DIGN - 36 x 36 SQ | 1503                    | 1725                | 1787              | 94     | 18     |
| DIGN - 42 x 42 SQ | 1826                    | 2149                | 2247              | 116    | 24.5   |
| DIGN - 48 x 48 SQ | 2023                    | 2306                | 2411              | 141    | 32     |
| DIGN - 24 DIA     | 1191                    | 1550                | 1588              | 45     | 7.2    |
| DIGN - 30 DIA     | 1343                    | 1695                | 1744              | 57     | 13.5   |
| DIGN - 36 DIA     | 1483                    | 1998                | 2085              | 71     | 18     |
| DIGN - 42 DIA     | 1815                    | 2388                | 2511              | 87     | 24.5   |
| DIGN - 48 DIA     | 1877                    | 2651                | 2785              | 104    | 32     |



### Corner and Spacer Connecting Tables

| Model  | Laminate<br>PVF/SE | Laminate<br>HB Edge | Veneer<br>HB Edge | Weight | Cu.Ft. |
|--|--------------------|---------------------|-------------------|--------|--------|
| DIGNRC - 28 x 28<br><i>Radius Corner Table</i> | 704                | 882                 | 1091              | 31     | 2      |
| DIGNSC - 28 x 28<br><i>Square Corner Table</i> | 704                | 882                 | 1091              | 32     | 2      |
| DIGNTC - 45 degree<br><i>Corner Table</i>      | 704                | 882                 | 1091              | 26     | 2      |
| DIGNST - 21 x 24<br><i>Spacer Table</i>        | 542                | 738                 | 890               | 27     | 2      |



## BEHAVIORAL HEALTH & HEAVY DUTY Specialty Tables

### DIGNITY2

#### Standard Features

- Tops in laminate or veneer
- Select from 15 standard laminates or choose any standard Wilsonart, Nevamar, Formica, Arborite and Pionite matte finish laminates at no upcharge.
- Laminate tops with PVC Flat (PVF), Self Edge (SE), or hardwood (HB) edge
- 9 standard veneer and hardwood edge stains. Stain-to-match available at no upcharge.
- Tops utilize NU Green earth friendly core
- 18" height
- Non-removable steel levelling glides

#### Options

- Additional weight can be added, contact factory
- Non-standard laminates, contact Spec for pricing
- Floor mounting straps available, call Customer Service

*Radius Corner Tables are recommended for open areas*

#### Freestanding Lounge Tables

| Model              | Laminate<br>PVF/SE Edge | Laminate<br>HB Edge | Veneer<br>HB Edge | Weight | Cu.Ft. |
|--------------------|-------------------------|---------------------|-------------------|--------|--------|
| DIGN2 - 24 x 24 SQ | 1221                    | 1418                | 1455              | 62     | 7.2    |
| DIGN2 - 30 x 30 SQ | 1376                    | 1518                | 1569              | 80     | 13.5   |
| DIGN2 - 36 x 36 SQ | 1503                    | 1725                | 1787              | 101    | 18     |
| DIGN2 - 42 x 42 SQ | 1826                    | 2149                | 2247              | 124    | 24.5   |
| DIGN2 - 48 x 48 SQ | 2023                    | 2306                | 2411              | 151    | 32     |
| DIGN2 - 24 DIA     | 1191                    | 1550                | 1588              | 49     | 7.2    |
| DIGN2 - 30 DIA     | 1343                    | 1695                | 1744              | 61     | 13.5   |
| DIGN2 - 36 DIA     | 1483                    | 1998                | 2085              | 76     | 18     |
| DIGN2 - 42 DIA     | 1815                    | 2388                | 2511              | 93     | 24.5   |
| DIGN2 - 48 DIA     | 1877                    | 2651                | 2785              | 111    | 32     |



#### Corner and Spacer Connecting Tables

| Model   | Laminate<br>PVF/SE | Laminate<br>HB Edge | Veneer<br>HB Edge | Weight | Cu.Ft. |
|---|--------------------|---------------------|-------------------|--------|--------|
| DIGN2RC - 28 x 28<br><i>Radius Corner Table</i> | 704                | 882                 | 1091              | 31     | 2      |
| DIGN2SC - 28 x 28<br><i>Square Corner Table</i> | 704                | 882                 | 1091              | 32     | 2      |
| DIGN2TC - 45 degree<br><i>Corner Table</i>      | 704                | 882                 | 1091              | 26     | 2      |
| DIGN2ST - 21 x 24<br><i>Spacer Table</i>        | 542                | 738                 | 890               | 27     | 2      |



**Dignity2 seating is available connected as 1, 2 and 3 seaters, with or without arms between, with corner or spacer tables. Above pricing includes connector bars.**

# BEHAVIORAL HEALTH & HEAVY DUTY Specialty Tables

## DRUM HD, CUBE HD, OVAL HD

### NOTES AND OPTIONS

- Select from 15 standard laminates or choose any standard Wilsonart, Nevamar, Formica, Arborite and Pionite matte finish laminates at no upcharge. For other laminate please contact the factory for pricing.
- 9 standard veneer and hardwood edge stains. Stain-to-match available at no upcharge.
- Other sizes are available. Contact the factory for pricing.
- Standard heights: 16", 18", 20", 22".

| MODEL         | BASES       |             | TOP SPECIFICATIONS |               | OPTIONS          | LBS |
|---------------|-------------|-------------|--------------------|---------------|------------------|-----|
|               | <i>Code</i> | <i>Qty.</i> | <i>Laminate</i>    | <i>Veneer</i> | <i>Kickplate</i> |     |
|               |             |             | SE                 | SE            | KP               |     |
| <i>Round</i>  |             |             |                    |               |                  |     |
| 18D           | DRMHD       | 1           | 820                | 861           | 51               | 78  |
| 24D           | DRMHD       | 1           | 864                | 909           | 51               | 92  |
| 30D           | DRMHD       | 1           | 1077               | 1125          | 51               | 106 |
| 36D           | DRMHD       | 1           | 1217               | 1266          | 51               | 121 |
| 42D           | DRMHD       | 1           | 1346               | 1432          | 51               | 138 |
| <i>Square</i> |             |             |                    |               |                  |     |
| 18 x 18SQ     | CUBEHD      | 1           | 630                | 861           | 51               | 81  |
| 24 x 24SQ     | CUBEHD      | 1           | 664                | 908           | 51               | 100 |
| 30 x 30SQ     | CUBEHD      | 1           | 825                | 999           | 51               | 113 |
| 36 x 36SQ     | CUBEHD      | 1           | 954                | 1539          | 51               | 150 |
| <i>Oval</i>   |             |             |                    |               |                  |     |
| 30 x 36       | OVALHD      | 1           | 1775               | 1847          | 75               | 122 |
| 30 x 42       | OVALHD      | 1           | 1963               | 2091          | 75               | 135 |
| 30 x 48       | OVALHD      | 1           | 2481               | 2612          | 75               | 148 |



DRMHD



CUBEHD





OVALHD

# BEHAVIORAL HEALTH & HEAVY DUTY Specialty Tables

## TRUMPET HD, DISC HD

### NOTES AND OPTIONS

- Select from 15 standard laminates or choose any standard Wilsonart, Nevamar, Formica, Arborite and Pionite matte finish laminates at no upcharge. For other laminate please contact the factory for pricing.
- 9 standard veneer and hardwood edge stains. Stain-to-match available at no upcharge.
- Standard table height: 29". Customs available.
- All bases are standard with floor leveling glides.
- Chrome bases may be available as an upcharge. Please contact the factory.

| MODEL   | BASES  |     | TOP SPECIFICATIONS |          |                    |                                     |                                |                                     | OPTIONS | MOBILITY | LBS |
|---|--------|-----|--------------------|----------|--------------------|-------------------------------------|--------------------------------|-------------------------------------|---------|----------|-----|
| Size / Shape  | Code   | #of | For Laminate Top   |          |                    | For Veneer Top                      |                                |                                     |         |          |     |
|   |        |     | SE<br>PVF<br>2MM   | HF<br>HB | HBV<br>HBVR<br>HBG | HF2<br>HB2<br>HKN4<br>HKNR4<br>HBG2 | HF<br>HB<br>HBV<br>HBVR<br>HBG | HF2<br>HB2<br>HKN4<br>HKNR4<br>HBG2 |         |          |     |
|    |        |     |                    |          |                    |                                     |                                |                                     |         |          |     |
| 24 DIA  | TRHD   | 1   | 887                | 1247     | 1284               | 1393                                | 1452                           | 1564                                |         |          | 99  |
|   | DISCHD | 1   | 1139               | 1499     | 1536               | 1645                                | 1704                           | 1816                                |         |          | 116 |
| 30 DIA  | TRHD   | 1   | 991                | 1346     | 1393               | 1611                                | 1556                           | 1720                                |         |          | 109 |
|   | DISCHD | 1   | 1243               | 1598     | 1645               | 1863                                | 1808                           | 1972                                |         |          | 126 |
| 36 DIA  | TRHD   | 1   | 1090               | 1603     | 1694               | 1872                                | 1926                           | 2155                                |         |          | 120 |
|   | DISCHD | 1   | 1342               | 1855     | 1946               | 2124                                | 2178                           | 2407                                |         |          | 137 |
| 42 DIA  | TRHD   | 1   | 1375               | 1951     | 2075               | 2340                                | 2366                           | 2679                                |         |          | 134 |
|   | DISCHD | 1   | 1627               | 2203     | 2327               | 2592                                | 2618                           | 2931                                |         |          | 161 |
| 48 DIA  | TRHD   | 1   | 1398               | 2171     | 2306               | 2438                                | 2912                           | 3314                                |         |          | 150 |
|   | DISCHD | 1   | 1650               | 2423     | 2558               | 2690                                | 3164                           | 3566                                |         |          | 177 |
|  |        |     |                    |          |                    |                                     |                                |                                     |         |          |     |
| 24X24 SQ  | TRHD   | 1   | 918                | 1113     | 1150               | 1218                                | 1268                           | 1435                                |         |          | 99  |
| 30X30 SQ  | TRHD   | 1   | 1025               | 1167     | 1218               | 1398                                | 1332                           | 1564                                |         |          | 106 |
|   | DISCHD | 1   | 1277               | 1419     | 1470               | 1650                                | 1584                           | 1816                                |         |          | 136 |
| 36X36 SQ  | TRHD   | 1   | 1108               | 1331     | 1393               | 1603                                | 1611                           | 1811                                |         |          | 120 |
|   | DISCHD | 1   | 1360               | 1583     | 1645               | 1855                                | 1863                           | 2063                                |         |          | 147 |



Weighted Trumpet Base



Weighted Disc Base

Weighted Trumpet Base  
Lounge Height

## BEHAVIORAL HEALTH & HEAVY DUTY Specialty Tables

### TRAFFIC DINING

#### Standard Features

- Tabletop standard in Laminate with PVC Flat (PVF), 2MM or Self Edge (SE)
- Select from 15 standard laminates or choose any standard Wilsonart, Nevamar, Formica, Arborite and Pionite matte finish laminates at no upcharge. For other laminate please contact the factory for pricing.
- PVC Flat edge and 2mm Bio edge available in 38 solid colors. 2mm PVC edge available in wood grain to match 9 standard stains.
- Floor Mounting plates
- Tamperproof fasteners
- Welded steel end caps

#### Options

- 30" Bariatric seats are available. Contact factory for pricing
- Coated steel tabletop available. Contact factory for pricing
- CAL 133

Contact Spec Customer Service to railroad fabrics (specify repeat info and yardage requirement will be provided) and for repeats greater than 5" x 5"



#### Traffic Dining without arms, without upholstered cushions

N/A COM per single seat

| MODEL          | PRICE       |
|----------------|-------------|
| <b>7100NHD</b> | <b>4920</b> |

Dimensions (inches)

|         |       |         |      |            |       |             |      |
|---------|-------|---------|------|------------|-------|-------------|------|
| seat H  | 18.0  | seat W  | 22.0 | table top  | 30x48 | table H     | 29.0 |
| total H | 33.75 | total W | 48.0 | seat depth | 17.0  | total depth | 74   |

Exceeds BIFMA Seating Durability Test to 500 lbs per chair

#### Traffic Dining without arms, with upholstered cushions

0.75 yd COM per single seat and back

| MODEL          | COM         | GR 1        | GR 2        | GR 3        | GR 4        | GR 5        | GR 6        |
|----------------|-------------|-------------|-------------|-------------|-------------|-------------|-------------|
| <b>7100UHD</b> | <b>4999</b> | <b>5167</b> | <b>5223</b> | <b>5365</b> | <b>5535</b> | <b>5665</b> | <b>5832</b> |

Dimensions (inches)

|         |       |         |      |            |       |             |      |
|---------|-------|---------|------|------------|-------|-------------|------|
| seat H  | 18.0  | seat W  | 22.0 | table top  | 30x48 | table H     | 29.0 |
| total H | 33.75 | total W | 48.0 | seat depth | 17.0  | total depth | 74   |

Exceeds BIFMA Seating Durability Test to 500 lbs per chair

CAL 133, add \$240 List per unit

